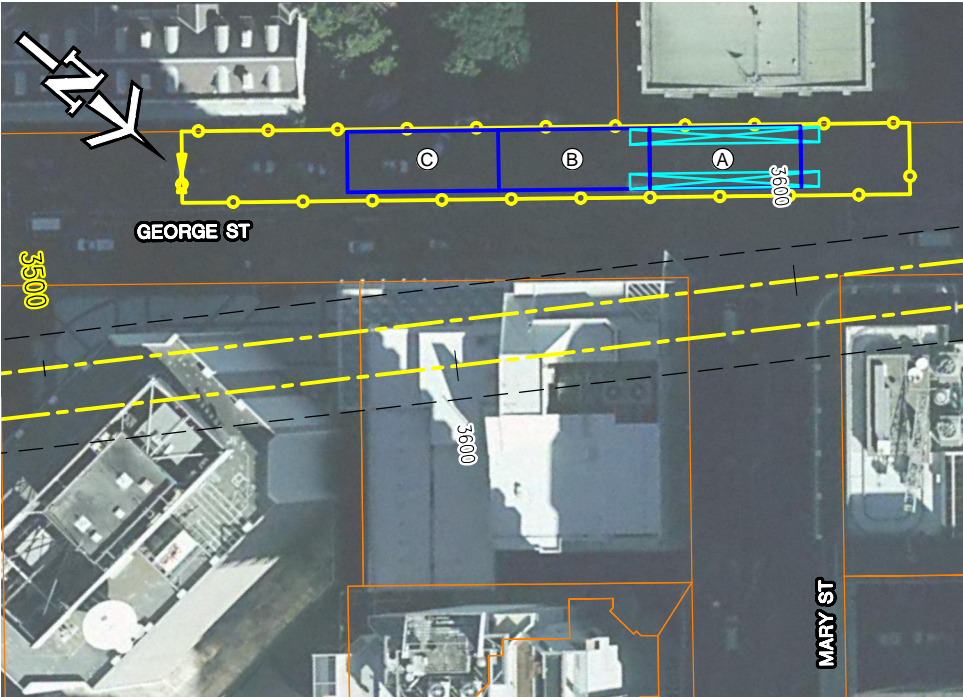
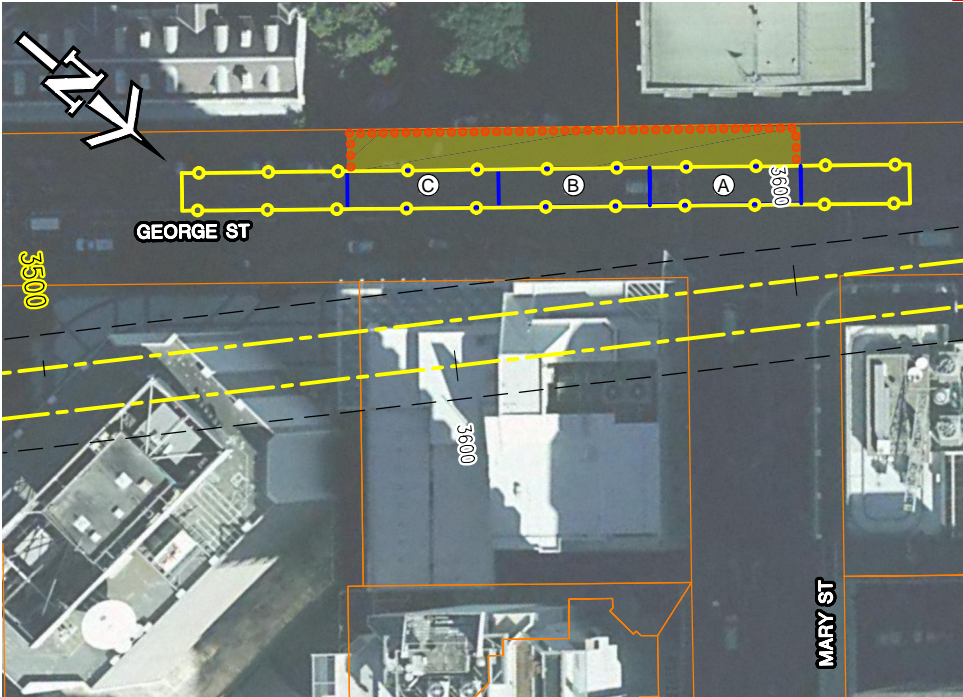


NOT FOR CONSTRUCTION



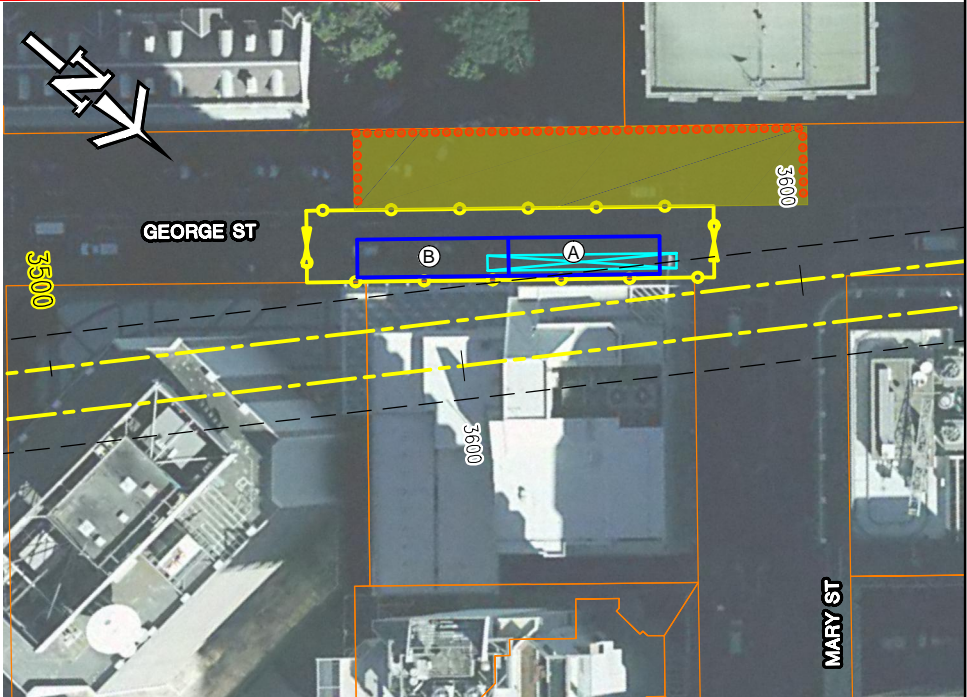
STAGE 1

1. ENCLOSE SITE - WESTERN 2 LANES OF GEORGE ST AND FOOTPATH.
2. EXPOSE SERVICES (IN FOOTPATH AND HV) IN 20m LENGTHS.
3. HANG SERVICES ON 25m LONG TRUSSES SPANNING A
4. SOLDIER PILE, EXCAVATE AND LAG, PERIMETER TO ROCK.
5. CONSTRUCT ROOF SLAB, BACKFILL, REMOVE TRUSSES.
6. REPEAT FOR B AND C.



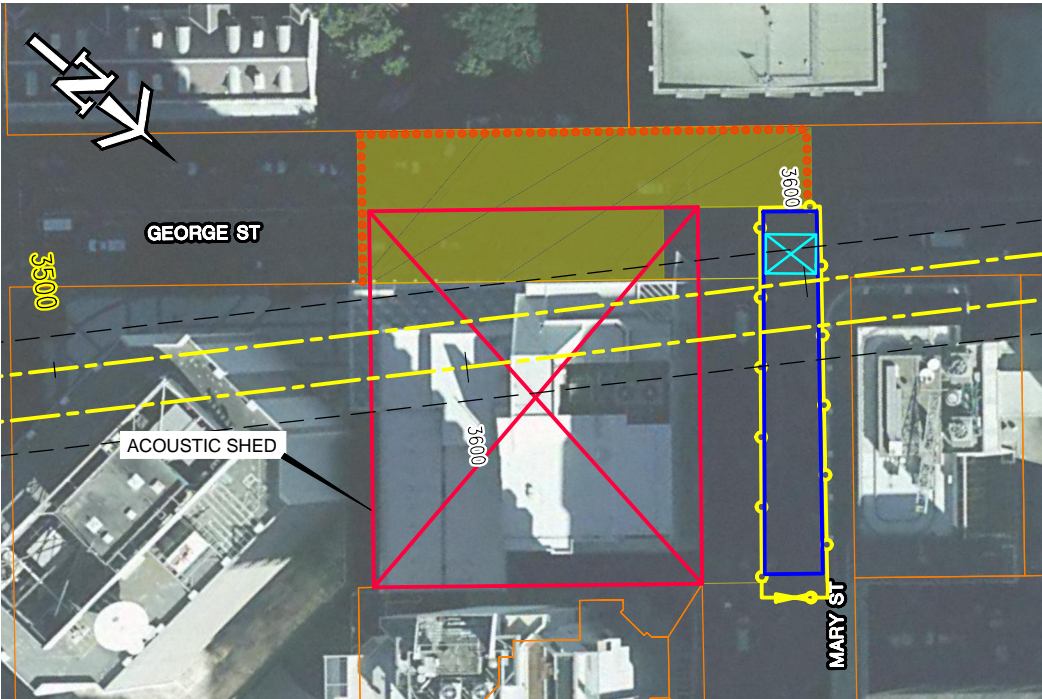
STAGE 2

1. HOARD OFF INSIDE CENTRE TWO LANES.
2. SOLDIER PILE AT ENDS, EXCAVATE AND LAG A
3. CONSTRUCT ROOF SLAB, BACKFILL A
4. REPEAT FOR B AND C



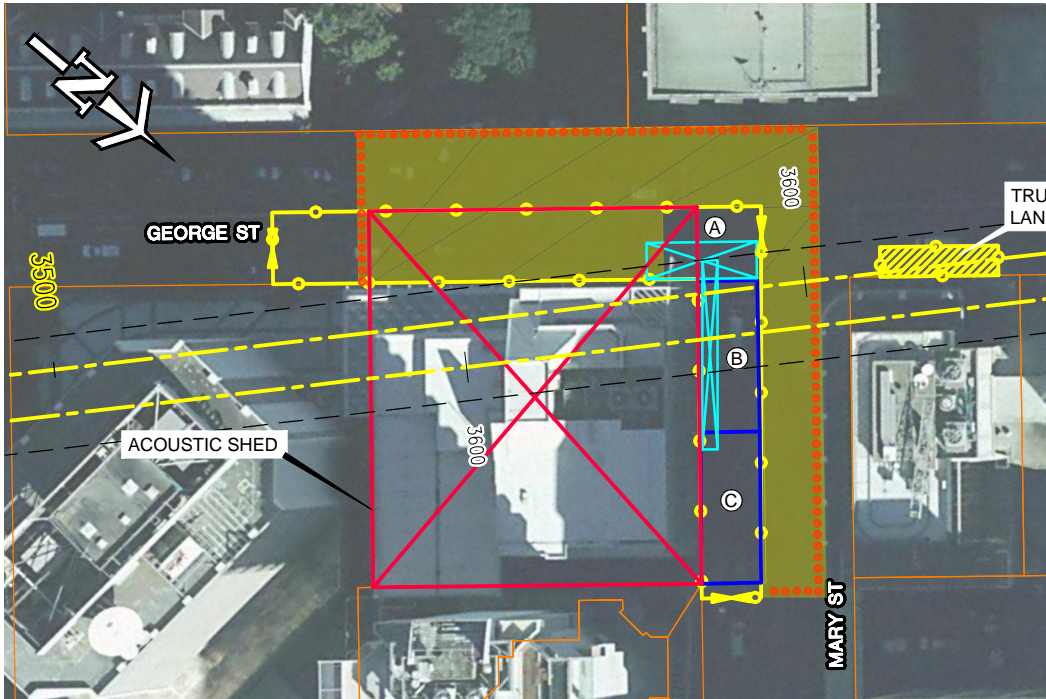
STAGE 3

1. ENCLOSE SITE - EASTERN 2 LANES OF GEORGE ST AND FOOTPATH.
2. DIVERT GAS, EXPOSE SERVICES IN FOOTPATH, HANG ON 25m TRUSS.
3. SOLDIER PILE, EXCAVATE AND LAG AT END A
4. CONSTRUCT ROOF SLAB, BACKFILL, REMOVE TRUSS A
5. REPEAT FOR B.




STAGE 4

1. DIVERT WATER.
2. HOARD OFF 3 LANES OF MARY ST - LEAVE ON LEFT HAND LANE ONLY INTO GEORGE ST.
3. EXPOSE AND SUSPEND SERVICES.
4. SOLDIER PILE, EXCAVATE AND LAG.
5. CONSTRUCT ROOF SLAB, BACKFILL, REMOVE SERVICE SUPPORTS.



STAGE 5 - FINAL 2 YEARS OF CONSTRUCTION

1. DIVERT GAS, HOARD OFF 2 LANES OF MARY ST AND FOOTPATH (+ 2 LANES IN GEORGE ST).
2. EXPOSE AND SUSPEND SERVICES A
3. EXCAVATE AND CONSTRUCT ROOF SLAB, BACKFILL.
4. EXPOSE AND HANG SERVICES ON 25m TRUSS B EXCAVATE, CONSTRUCT AND BACKFILL.
5. REPEAT FOR C.

				Associated Job Nos		Survey Data		<div>Scale B</div> <div>0 10 20 25m</div> <div>1 : 1000 (A3) 1 : 500 (A1)</div>		BRISBANE CITY					CONSTRUCTION SITE LAYOUT AND STAGING GEORGE STREET STATION																																																																																																																																																																																																																																																																																																																																																																																																																																																																																																																																																																																																																																																																																																																																																																																																																																																																																																																																																																																																																																																																																																																																																																																																																																																																																																																																																																																																																																																																																																																																																																																																																																																																																																																																																																																																																																																																																																																																																																																																																																																																																																																																																																																																																																																																																																																																																																																																																																																																																																																																																																																																																																																																																																																																																																																																																																																																																																																																																																																																																																																																																																																																																																																								
						Datum				BaT (BUS AND TRAIN PROJECT)																																																																																																																																																																																																																																																																																																																																																																																																																																																																																																																																																																																																																																																																																																																																																																																																																																																																																																																																																																																																																																																																																																																																																																																																																																																																																																																																																																																																																																																																																																																																																																																																																																																																																																																																																																																																																																																																																																																																																																																																																																																																																																																																																																																																																																																																																																																																																																																																																																																																																																																																																																																																																																																																																																																																																																																																																																																																																																																																																																																																																																																																																																																																																																																													
				Auxiliary Drg Nos		Horiz. Grid				REFERENCE DESIGN										Job No.																																																																																																																																																																																																																																																																																																																																																																																																																																																																																																																																																																																																																																																																																																																																																																																																																																																																																																																																																																																																																																																																																																																																																																																																																																																																																																																																																																																																																																																																																																																																																																																																																																																																																																																																																																																																																																																																																																																																																																																																																																																																																																																																																																																																																																																																																																																																																																																																																																																																																																																																																																																																																																																																																																																																																																																																																																																																																																																																																																																																																																																																																																																																																																																			
2 ISSUED FOR EIS						Height Origin				Reference Points					Drawn					ENGINEERING CERTIFICATION					Contract No.																																																																																																																																																																																																																																																																																																																																																																																																																																																																																																																																																																																																																																																																																																																																																																																																																																																																																																																																																																																																																																																																																																																																																																																																																																																																																																																																																																																																																																																																																																																																																																																																																																																																																																																																																																																																																																																																																																																																																																																																																																																																																																																																																																																																																																																																																																																																																																																																																																																																																																																																																																																																																																																																																																																																																																																																																																																																																																																																																																																																																																																																																																																																																																														
1 REVISED REFERENCE DESIGN										Preceding RP					Dist. to start of job (km)					From start to end of job					From end to Following RP					Following RP					S.W.F					ENG. AREA					NAME					SIGNATURE					NO.					DATE					Drawing No.		130301		2																																																																																																																																																																																																																																																																																																																																																																																																																																																																																																																																																																																																																																																																																																																																																																																																																																																																																																																																																																																																																																																																																																																																																																																																																																																																																																																																																																																																																																																																																																																																																																																																																																																																																																																																																																																																																																																																																																																																																																																																																																																																																																																																																																																																																																																																																																																																																																																																																																																																																																																																																																																																																																																																																																																																																																																																																																																																																																																																																																																																																																																																																																																																		
0 REFERENCE DESIGN																																																																																																																																																																																																																																																																																																																																																																																																																																																																																																																																																																																																																																																																																																																																																																																																																																																																																																																																																																																																																																																																																																																																																																																																																																																																																																																																																																																																																																																																																																																																																																																																																																																																																																																																																																																																																																																																																																																																																																																																																																																																																																																																																																																																																																																																																																																																																																																																																																																																																																																																																																																																																																																																																																																																																																																																																																																																																																																																																																																																																																																																																																																																																																																																							