

# APPENDIX B3:J

## Aerial photographs



**SITE**

Source Photograph:  
 Maroochydore 9544  
 Film: QAP 747 Run: 3  
 Photo: 122 Scale: 1:48 000 (original)

Source: Qld Department of Environment and Resource Management

	CLIENT SCC		PROJECT Sunshine Coast Airport	
	DRAWN SJD	DATE 15/08/2012	TITLE <b>AERIAL PHOTO 1958</b>	
	CHECKED JM	DATE 15/08/2012		
	SCALE Not to Scale		PROJECT No 137632097	APPENDIX No J

Information contained on this drawing is the copyright of Golder Associates Pty Ltd. Unauthorised use or reproduction of this plan either wholly or in part without written permission infringes copyright. © Golder Associates Pty Ltd.

# APPENDIX B3:J



**SITE**

Source Photograph:  
 Nambour-Maroochydore 9544  
 Film: QAP 1749 Run: 2  
 Photo: 3 Scale: 1:48 000 (original)

Source: Qld Department of Environment and Resource Management

	CLIENT		SCC	PROJECT		Sunshine Coast Airport			
	DRAWN	SJD	DATE	15/08/2012	TITLE				
	CHECKED	JM	DATE	15/08/2012	<b>AERIAL PHOTO 1967</b>				
	SCALE	Not to Scale		PROJECT No					137632097

Information contained on this drawing is the copyright of Golder Associates Pty Ltd. Unauthorised use or reproduction of this plan either wholly or in part without written permission infringes copyright. © Golder Associates Pty Ltd.

# APPENDIX B3:J



**SITE**

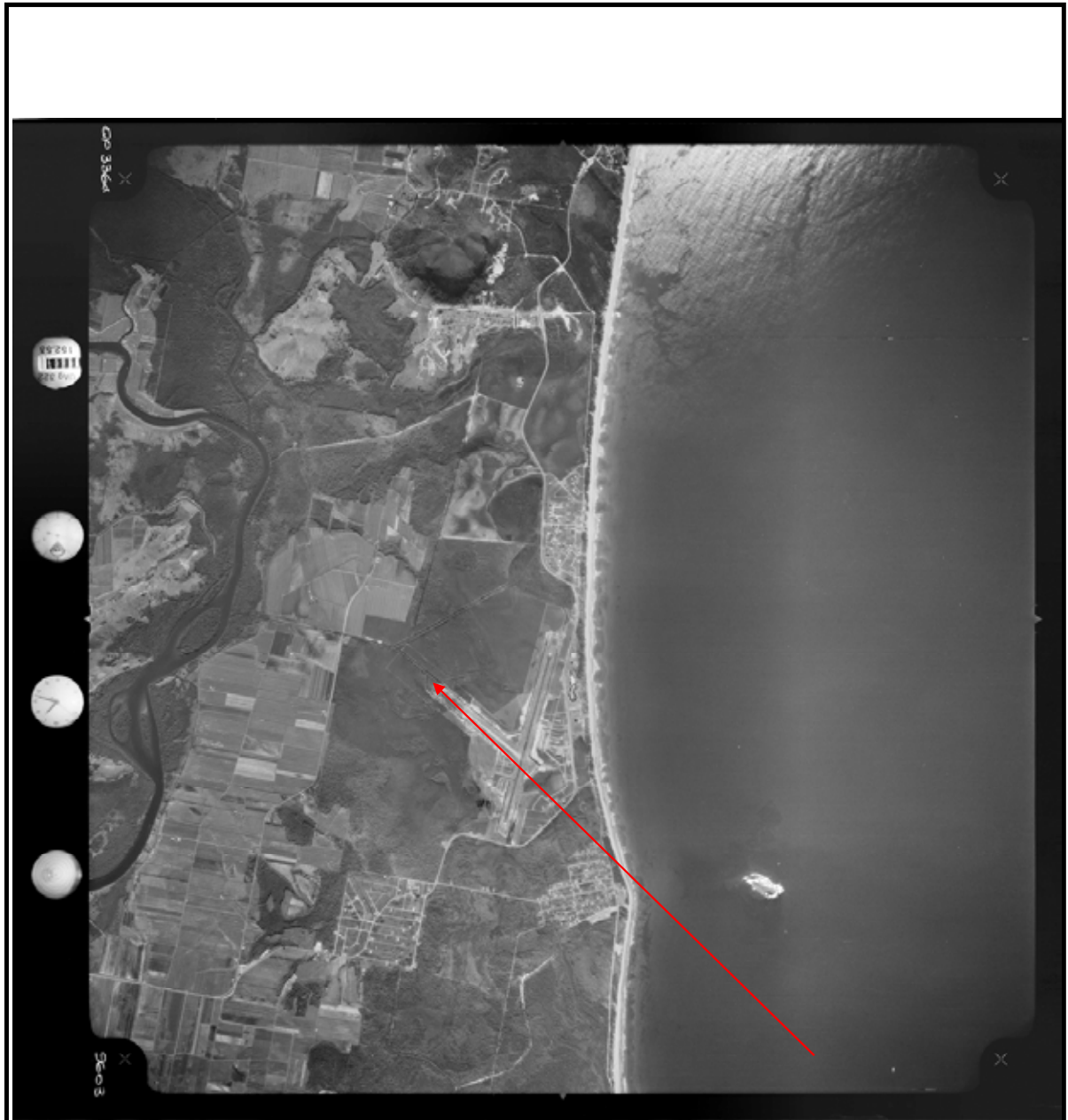
Source Photograph:  
 Caloundra 9544  
 Film: QAP 2464 Run: 4  
 Photo: 123 Scale: 1:24 000 (original)

Source: Qld Department of Environment and Resource Management

	CLIENT		SCC		PROJECT		Sunshine Coast Airport	
	DRAWN		SJD		DATE		15/08/2012	
	CHECKED		JM		DATE		15/08/2012	
	SCALE		Not to Scale		PROJECT No		137632097	
				TITLE		<b>AERIAL PHOTO 1972</b>		
				APPENDIX No		J		
				REV No		0		
						<b>A4</b>		

Information contained on this drawing is the copyright of Golder Associates Pty Ltd. Unauthorised use or reproduction of this plan either wholly or in part without written permission infringes copyright. © Golder Associates Pty Ltd.

# APPENDIX B3:J



**SITE**

Source Photograph:  
 Caloundra 9544  
 Film: QAP 3364 Run: 2  
 Photo: 9603 Scale: 1:37 500 (original)

Source: Qld Department of Environment and Resource Management

	CLIENT		SCC		PROJECT				Sunshine Coast Airport								
	DRAWN		SJD		DATE		15/08/2012		TITLE								
	CHECKED		JM		DATE		15/08/2012		<b>AERIAL PHOTO 1977</b>								
	SCALE		Not to Scale		PROJECT No		137632097		APPENDIX No		J		REV No		0		<b>A4</b>

Information contained on this drawing is the copyright of Golder Associates Pty Ltd. Unauthorised use or reproduction of this plan either wholly or in part without written permission infringes copyright. © Golder Associates Pty Ltd.

# APPENDIX B3:J

Information contained on this drawing is the copyright of Golder Associates Pty Ltd. Unauthorised use or reproduction of this plan either wholly or in part without written permission infringes copyright. © Golder Associates Pty Ltd.



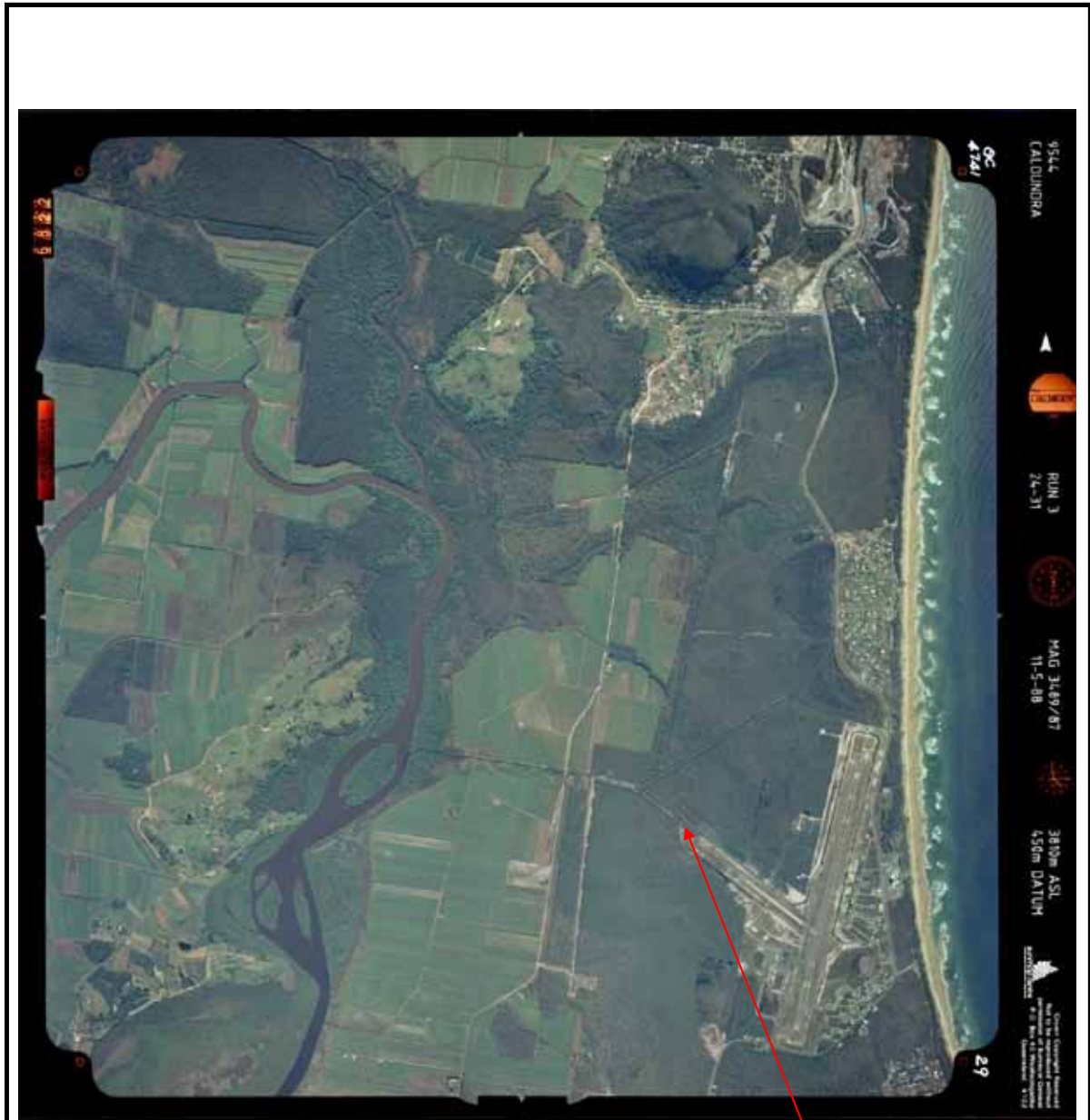
**SITE**

Source Photograph:  
 Caloundra 9544  
 Film: QAP 3856 Run: 3  
 Photo: 6562 Scale: 1:25 000 (original)

Source: Qld Department of Environment and Resource Management

	CLIENT		SCC		PROJECT		Sunshine Coast Airport		
	DRAWN		SJD		DATE		15/08/2012		
	CHECKED		JM		DATE		15/08/2012		
	SCALE		Not to Scale		PROJECT No		137632097		
						TITLE		<b>AERIAL PHOTO 1981</b>	
						APPENDIX No		J	
						REV No		0 <b>A4</b>	

# APPENDIX B3:J



**SITE**

Source Photograph:  
 Caloundra 9544  
 Film: QAP 4741 Run: 3  
 Photo: 29 Scale: 1:25 000 (original)

Source: Qld Department of Environment and Resource Management

Information contained on this drawing is the copyright of Golder Associates Pty Ltd. Unauthorised use or reproduction of this plan either wholly or in part without written permission infringes copyright. © Golder Associates Pty Ltd.

	CLIENT		SCC		PROJECT		Sunshine Coast Airport		
	DRAWN		SJD		DATE		15/08/2012		
	CHECKED		JM		DATE		15/08/2012		
	SCALE		Not to Scale		PROJECT No		137632097		
				TITLE		AERIAL PHOTO 1988			
				APPENDIX No		J		REV No 0 A4	

# APPENDIX B3:J



**SITE**

Source Photograph:  
 Caloundra 9544  
 Film: QAP 4954 Run: 3  
 Photo: 147 Scale: 1:25 000 (original)

Source: Qld Department of Environment and Resource Management

Information contained on this drawing is the copyright of Golder Associates Pty Ltd. Unauthorised use or reproduction of this plan either wholly or in part without written permission infringes copyright. © Golder Associates Pty Ltd.

	CLIENT SCC		PROJECT Sunshine Coast Airport		
	DRAWN SJD	DATE 15/08/2012	TITLE <b>AERIAL PHOTO 1991</b>		
	CHECKED JM	DATE 15/08/2012			
SCALE Not to Scale	PROJECT No 137632097	APPENDIX No J	REV No 0	<b>A4</b>	

# APPENDIX B3:J



**SITE**

Source Photograph:  
 Caloundra 9544  
 Film: QAP 5391 Run: 19  
 Photo: 190 Scale: 1:18 000 (original)

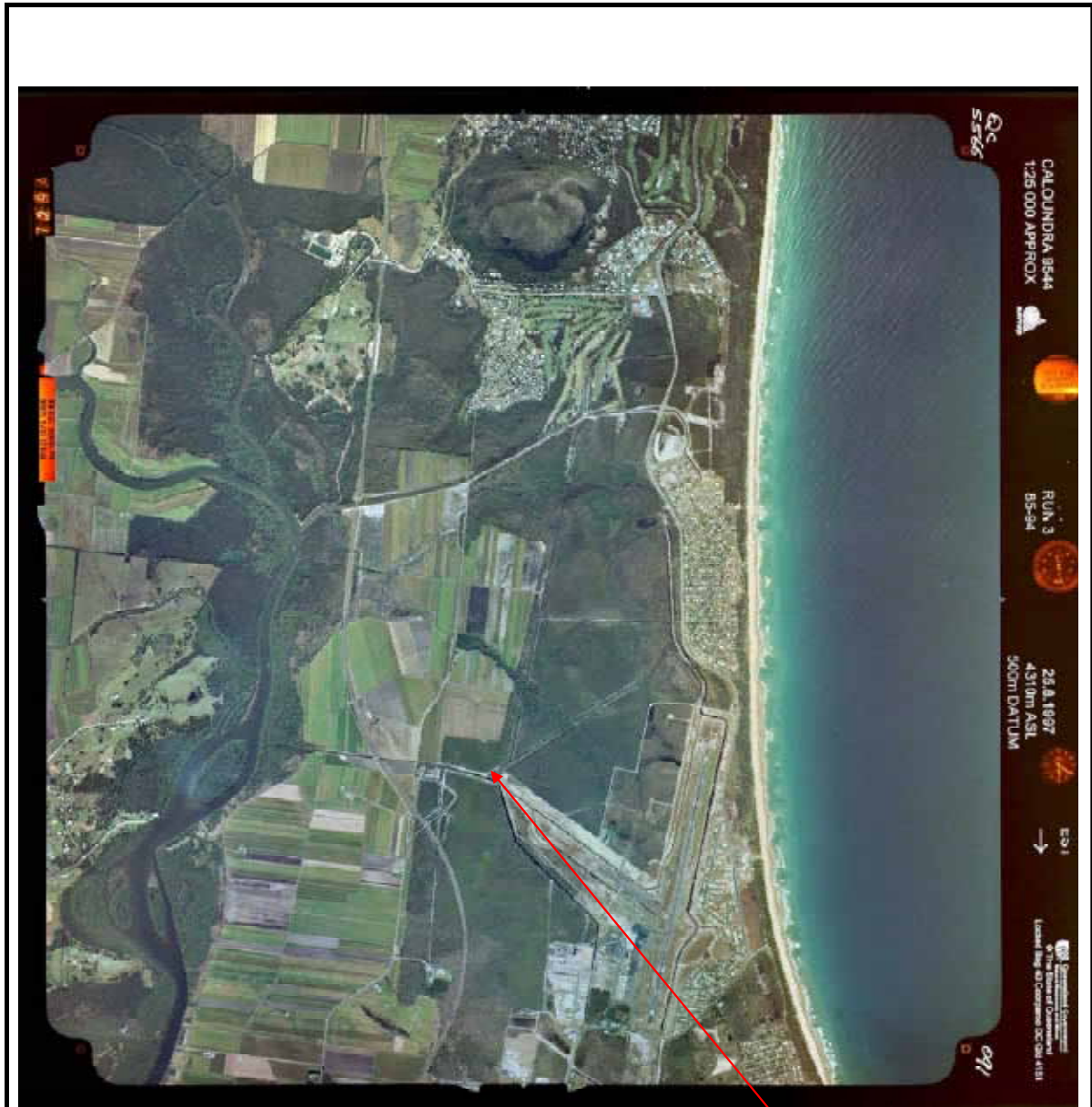
Source: Qld Department of Environment and Resource Management

	CLIENT SCC		PROJECT Sunshine Coast Airport		
	DRAWN SJD	DATE 15/08/2012	TITLE <b>AERIAL PHOTO 1995</b>		
	CHECKED JM	DATE 15/08/2012			
	SCALE Not to Scale		PROJECT No 137632097	APPENDIX No J	REV No 0

Information contained on this drawing is the copyright of Golder Associates Pty Ltd. Unauthorised use or reproduction of this plan either wholly or in part without written permission infringes copyright. © Golder Associates Pty Ltd.



# APPENDIX B3:J



**SITE**

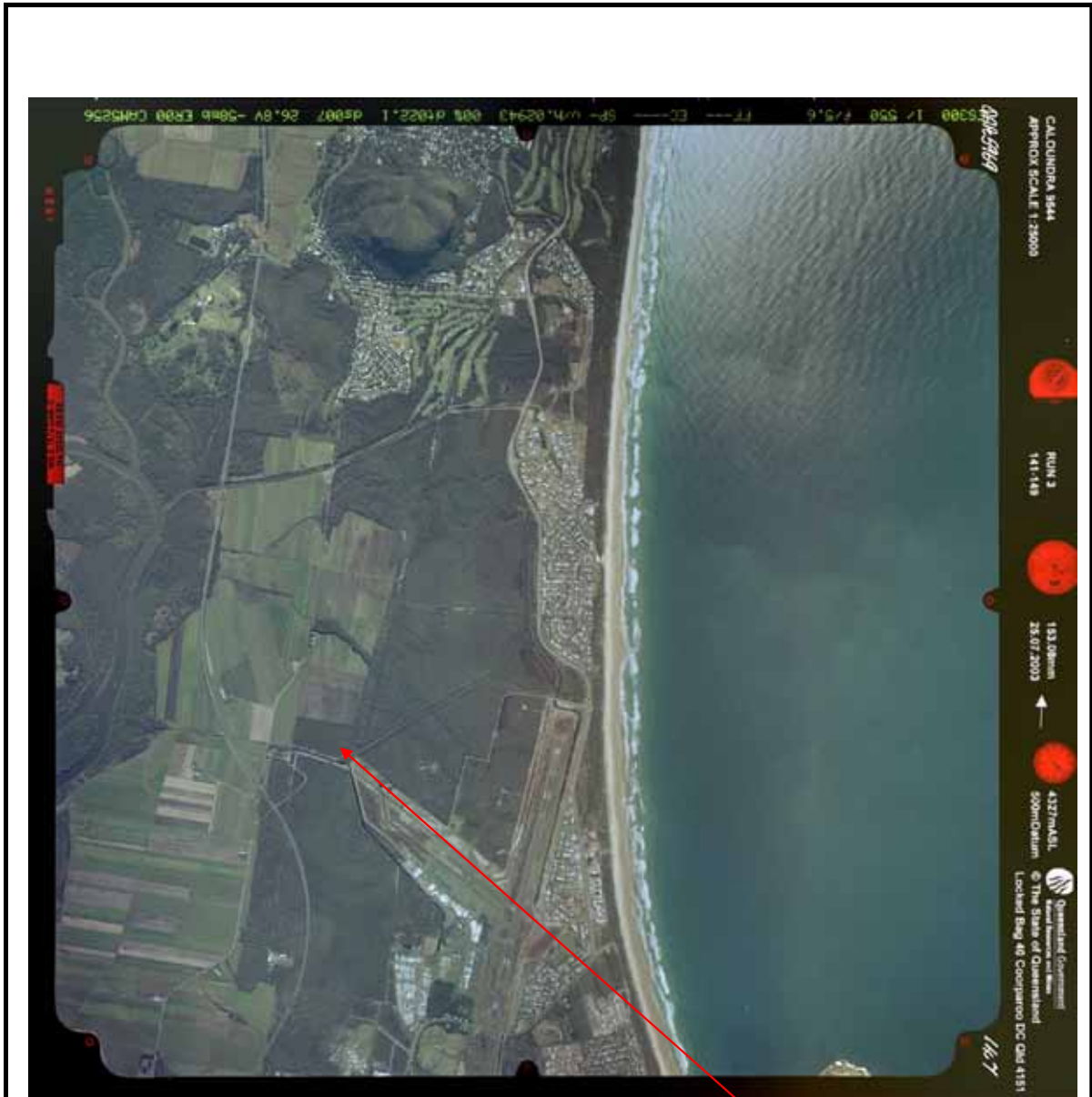
Source Photograph:  
 Caloundra 9544  
 Film: QAP 5566 Run: 3  
 Photo: 091 Scale: 1:25 000 (original)

Source: Qld Department of Environment and Resource Management

Information contained on this drawing is the copyright of Golder Associates Pty Ltd. Unauthorised use or reproduction of this plan either wholly or in part without written permission infringes copyright. © Golder Associates Pty Ltd.

	CLIENT		SCC		PROJECT		Sunshine Coast Airport			
	DRAWN	SJD	DATE	15/08/2012	TITLE				<b>AERIAL PHOTO 1997</b>	
	CHECKED	JM	DATE	15/08/2012						
SCALE	Not to Scale			PROJECT No	137632097	APPENDIX No	J	REV No	0	<b>A4</b>

# APPENDIX B3:J



**SITE**

Source Photograph:  
 Caloundra 9544  
 Film: QAP 5969 Run: 3  
 Photo: 147 Scale: 1:25 000 (original)

Source: Qld Department of Environment and Resource Management

Information contained on this drawing is the copyright of Golder Associates Pty Ltd. Unauthorised use or reproduction of this plan either wholly or in part without written permission infringes copyright. © Golder Associates Pty Ltd.

	CLIENT		SCC	PROJECT		Sunshine Coast Airport				
	DRAWN	SJD	DATE	15/08/2012	TITLE					
	CHECKED	JM	DATE	15/08/2012	<b>AERIAL PHOTO 2003</b>					
	SCALE	Not to Scale			PROJECT No	137632097	APPENDIX No	J	REV No	0

# APPENDIX B3:J



**SITE**

Source Photograph:  
 Caloundra 9544  
 Film: DIG 7001 Run: 32  
 Photo: 643 Scale: 1:30 000 (original)

Source: Qld Department of Environment and Resource Management

Information contained on this drawing is the copyright of Golder Associates Pty Ltd. Unauthorised use or reproduction of this plan either wholly or in part without written permission infringes copyright. © Golder Associates Pty Ltd.

	CLIENT		SCC		PROJECT		Sunshine Coast Airport			
	DRAWN	SJD	DATE	15/08/2012	TITLE <b>AERIAL PHOTO 2008</b>					
	CHECKED	JM	DATE	15/08/2012						
	SCALE		Not to Scale		PROJECT No	137632097	APPENDIX No	J	REV No	0