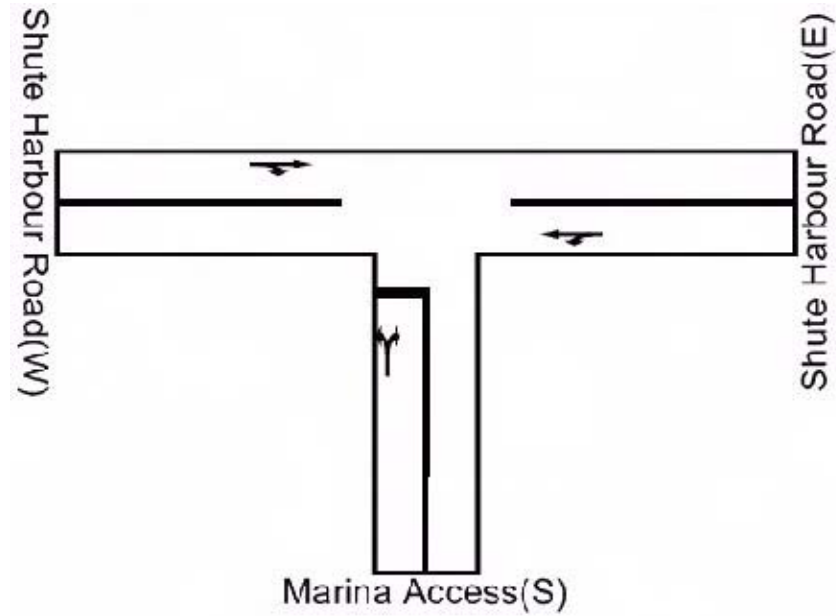
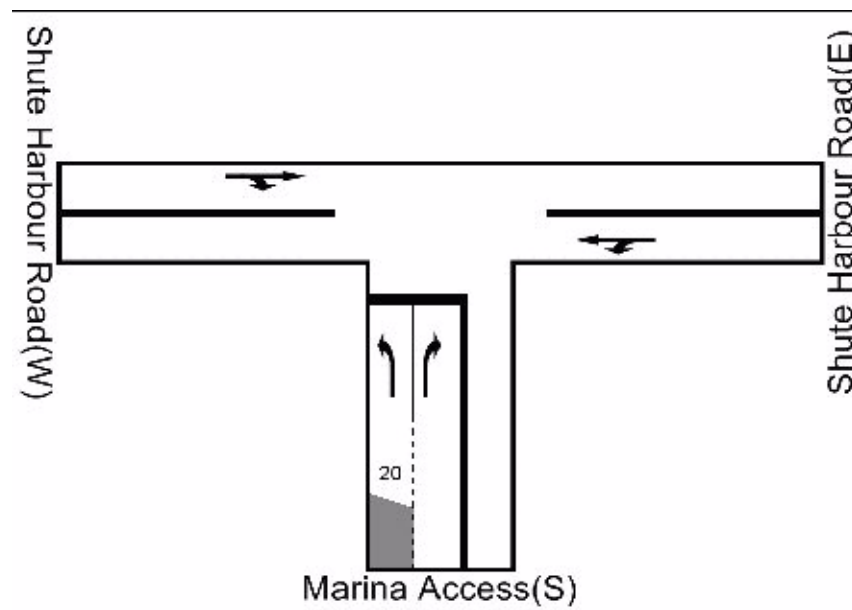


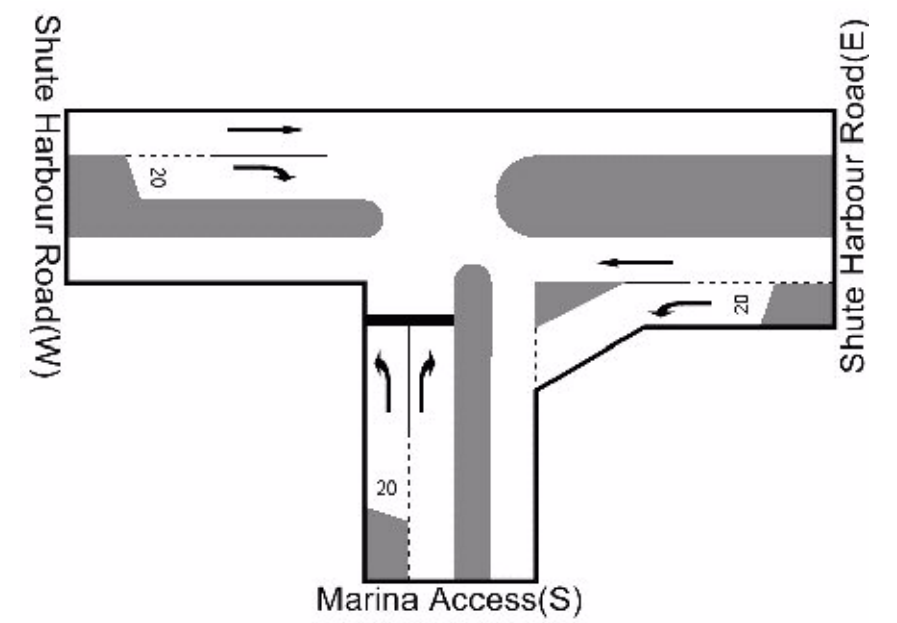
SIMPLIFIED ACCESS INTERSECTION LAYOUT



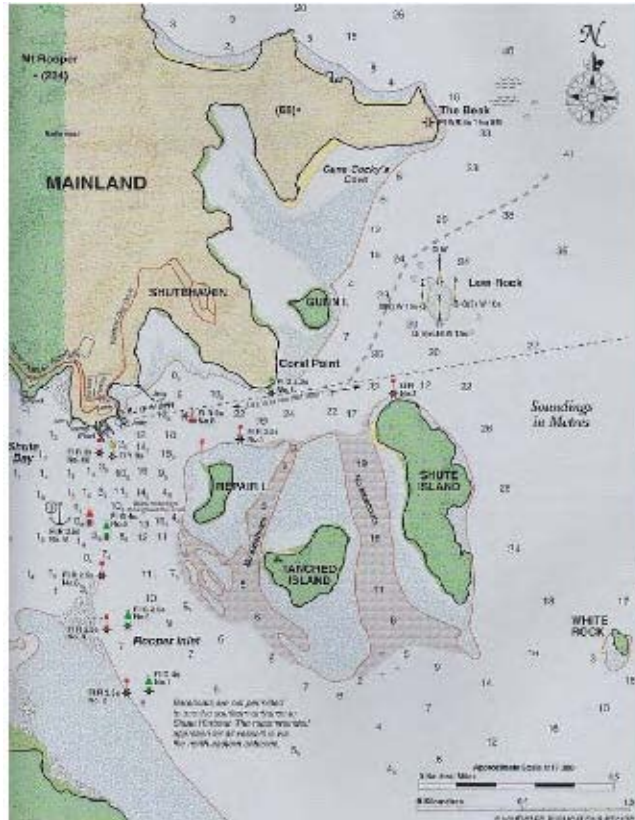
ACCESS INTERSECTION - LEFT STAND UP LANE LAYOUT



ACCESS INTERSECTION - SLIP LANE LAYOUT



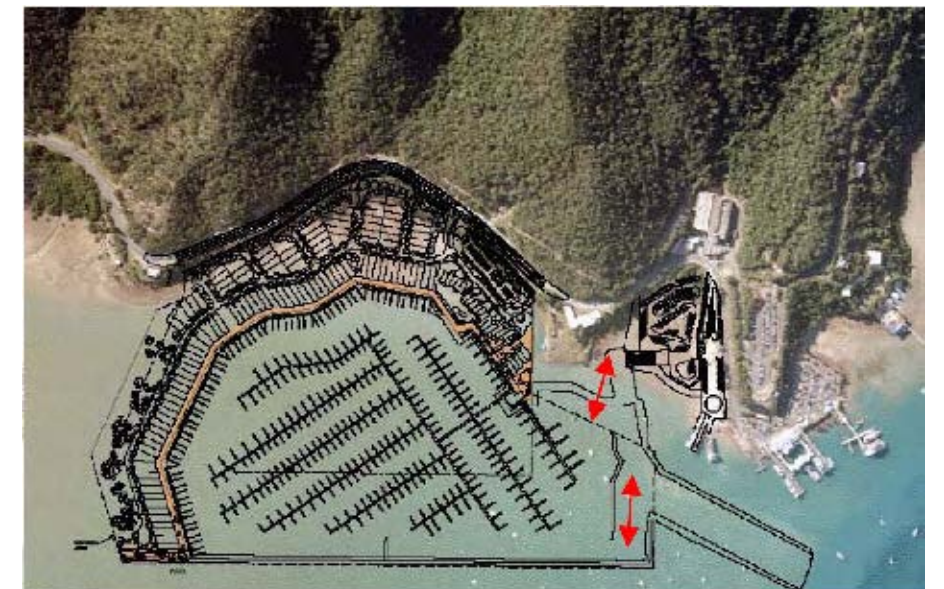
SHUTE HARBOUR MARINE CHARTLET



PROPOSED MARINA DEVELOPMENT



MARINA TRAFFIC MOVEMENT



© Cardno (Qld) Pty Ltd All Rights Reserved 2008.
Copyright in the whole and every part of this drawing belongs to Cardno (Qld) Pty Ltd and may not be used, sold, transferred, copied or reproduced in whole or in part in any manner or form or on any media, to any person other than by agreement with Cardno (Qld) Pty Ltd.

This document is produced by Cardno (Qld) Pty Ltd solely for the benefit of and use by the client in accordance with the terms of the retainer. Cardno (Qld) Pty Ltd does not and shall not assume any responsibility or liability whatsoever to any third party arising out of any use or reliance by third party on the content of this document.

Rev: Orig. Date: 14 October 2008

Shute Harbour Marina Development Pty Ltd
CAD FILE: I:\7800-41\ACAD\Environmental Impact Statement\Figure 12 - Road & Water Based Transport.dwg
XREF's:

Scale NTS (A3)

FIGURE 12

ROAD AND WATER BASED TRANSPORT

Project No.: 7800/41

PRINT DATE: 14 October, 2008 - 11:37am