

## 1

**INTRODUCTION**

QGC Limited prepared an environmental impact statement (EIS) dated 30 August 2009 for the Queensland Curtis LNG (QCLNG) Project. The QCLNG Project is to be developed by QGC, a wholly-owned subsidiary of BG Group plc.

The Project involves expanding QGC's existing coal seam gas (CSG) operations in the Surat Basin of southern Queensland and transporting the gas via an underground pipeline to a processing plant and export facility on Curtis Island, near Gladstone, where the gas will become liquefied natural gas (LNG).

In July 2008 the QCLNG development was designated a state significant project for which an EIS is required under the *State Development and Public Works Organisation Act 1971 (SDPWO Act)*. Terms of Reference (ToR) were issued by the Co-ordinator General (CG), attached as *Appendix 1.1* of the draft QCLNG EIS.

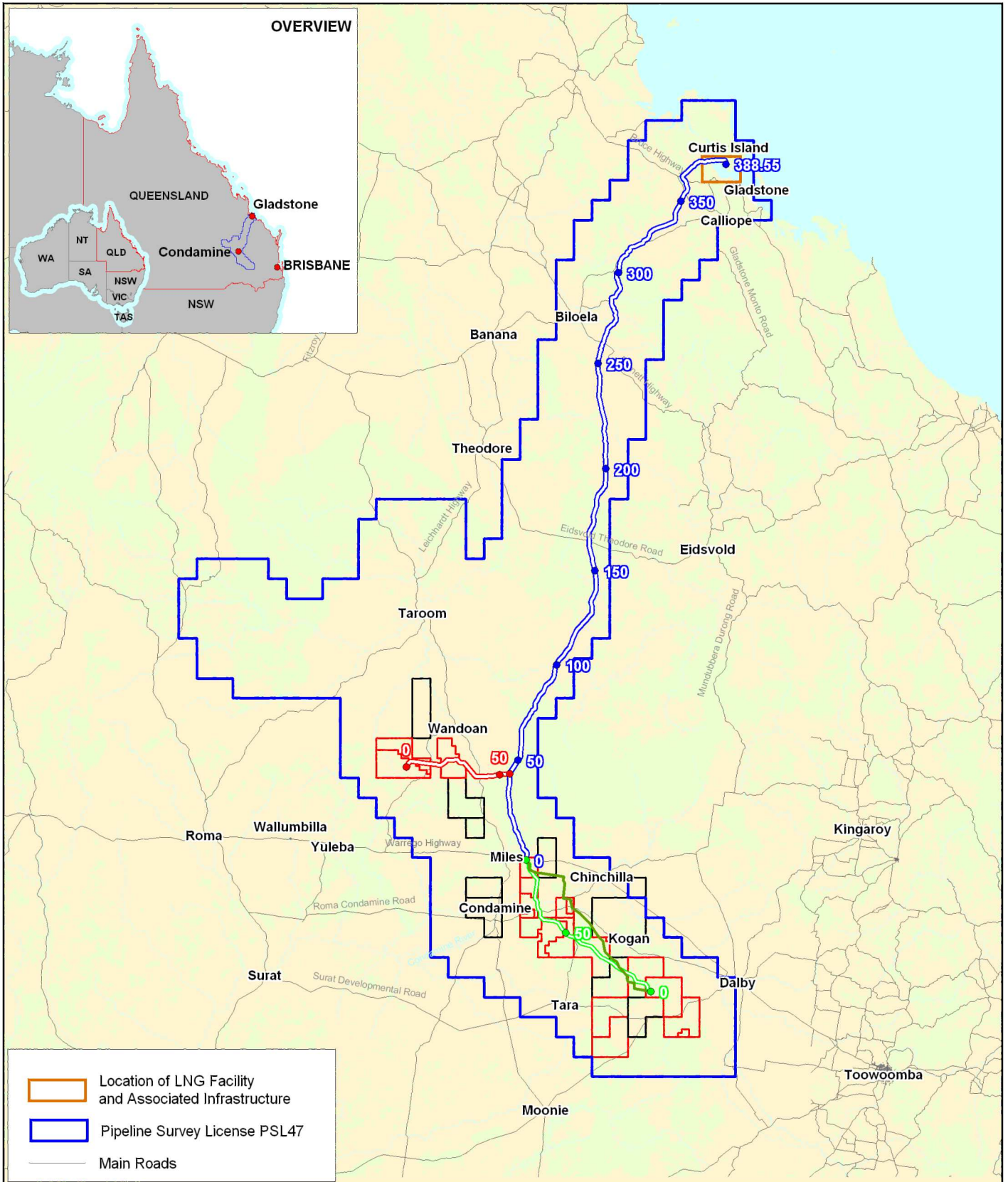
The QCLNG Project will consist of Project infrastructure to be developed by QGC comprising the following major components (Project Components):

- a significant CSG field development and supporting infrastructure in the Surat Basin of southern Queensland (Gas Field Component) including management of Associated Water produced
- a network of underground pipelines, including gas and water collection pipelines in the Gas Field Component and a 340<sup>1</sup> km underground gas transmission pipeline (Export Pipeline) from the Gas Field to a LNG Facility (Pipeline Component)
- a gas liquefaction facility on Curtis Island, adjacent to Gladstone, initially comprising two processing units, or "trains", to be followed by a third train. This component also includes an export jetty and other supporting infrastructure (LNG Component)
- access channels for shipping vessels (Swing Basin and Channel)
- LNG shipping operations to load the LNG and ship cargoes to global export markets (Shipping Operations).

Locations of Project Components are shown in *Figure 1.1.1*. Note that no significant changes to the geographic location of the Project have been made subsequent to submission of the draft EIS.

---

1 Rounded to 340 km



**Legend:**



- Export Pipeline & Kilometre Point
- Upstream Infrastructure Corridor & Kilometre Point
- Woleebee Creek Route & Kilometre Point
- Gas Fields - PL & PLA
- Gas Fields - ATP

**Source Note:** 1:250,000 Topographic vector copyright Geoscience Australia

Projection UTM MGA Zone 56 Datum GDA 94

0 50 75 100 Kilometres

N

 <p>QUEENSLAND CURTIS LNG A BG Group business</p>	Project <b>Queensland Curtis LNG Project</b>		Title <b>QCLNG Project Study Area</b>
	Client <b>QGC - A BG Group business</b>		
 <p>ERM Environmental Resources Management Australia Pty Ltd</p>	Drawn Unidel	sEIS Volume 1 Figure S1.1.1	Disclaimer: Maps and Figures contained in this Report may be based on Third Party Data, may not be to scale and are intended as Guides only. ERM does not warrant the accuracy of any such Maps and Figures.
	Approved CDP	File No E05-P-MA-96244	
	Date 18.01.10	Revision Supplementary	

In August 2009 the draft EIS was submitted to the Department of Infrastructure and Planning (DIP), which is co-ordinating the EIS on behalf of the CG. The EIS was prepared in accordance with Part 4 of the *SDPWO Act* and was on public display for 49 days allowing for public and government agencies to read the document, ask questions and make submissions to the CG on the impacts and commitments identified in the draft EIS.

During the public consultation period, which closed on 19 October 2009, 40 submissions were received from 38 submitters. Of these submitters, 10 were from government agencies (federal, state and local) and 28 from various groups or individuals. *Appendix 2.1* provides a table listing the issues raised by each submission and where QGC's response can be found in this sEIS. It may reference other relevant information contained in the EIS or this sEIS that relates to the issue raised.

This level of stakeholder interest can be attributed to the extensive consultation undertaken by QGC and the quality of the draft EIS in analysing impacts of the Project and putting forward meaningful management and mitigation strategies to minimise these impacts as far as practicable.

On 20 October 2009, the CG requested further information to satisfactorily assess submissions prior to a final evaluation of the EIS. Supplementary information was requested and clarified in consultation with government agencies, community members and Queenslanders as required by section 35 of the *SDPWO Act*. This report addresses those questions, issues and other matters raised in submissions on the EIS.

The CG will review this information and will prepare a report outlining its assessment of this EIS and the Project. Additional information on the EIS process can be found in *Volume 1, Chapter 3* of the draft and supplementary environmental impact statement (sEIS).

At a federal level, this Project was referred to the Department of Environment, Water Heritage and the Arts (DEWHA) of the Commonwealth Government of Australia. The relevant Commonwealth government minister has determined that an EIS for key Project elements would be required under the *Environment Protection and Biodiversity Conservation Act 1999 (EPBC Act)*.

To this end, this sEIS aims to address those issues and concerns raised during the seven-week public consultation process and the submissions received and to fulfil QGC's legislative and corporate governance requirements.

In summary, the sEIS seeks to provide:

- a response to any issues or concerns raised by people or groups regarding the contents of the draft EIS through written submissions
- any additional information that has been developed or collected since the publishing of the draft EIS regarding the Project
- any additional information regarding Project design changes that have occurred since the release of the draft EIS or as a result of submissions.

To aid understanding of this document, the sEIS follows the structure of the draft EIS. This means this volume should be read in conjunction with *Volume 1* of the draft EIS. This volume cross-references material from the draft EIS in addressing issues, concerns and comments raised by key stakeholders and the general public relating to *Volume 1* of the EIS.

It also provides additional information on the sEIS process and its relevance to the assessment of this Project by both the Queensland Government and the Commonwealth Government.

A number of submissions were received and comments made regarding the following chapters of *Volume 1*. These comments related to:

- Project rationale and significance
- relationships with other projects
- alternatives to the Project
- EIS methodology
- Projects considered for cumulative impact assessment
- Project approvals and legislative framework
- standards, codes and guidelines.

The sEIS addresses the submissions. It will, taken with the information contained within the QCLNG draft EIS, allow DIP and DEWHA to assess the Project and provide direction to regulator authorities on reasonable and practical conditions that may be imposed through the licensing and permitting of Project construction and operation.

This sEIS also outlines any additional mitigation strategies that have been developed to ensure that the impacts of the QCLNG Project on the health and safety of our communities and the environment are minimised as far as practicable.