



Gladstone Ports Corporation

Growth, Prosperity, Community.

Appendix F – ASS WB EIS Figures





Based on or contains data provided by the State of Queensland (Department of Natural Resources and Water) 2004. In consideration of the State permitting use of this data you acknowledge and agree that the State gives no warranty in relation to the data (including accuracy, reliability, completeness, currency or suitability) and accepts no liability (including without limitation, liability in negligence) for any loss, damage or costs (including consequential damage) relating to any use of the data. Data must not be used for direct marketing or be used in breach of the privacy laws.

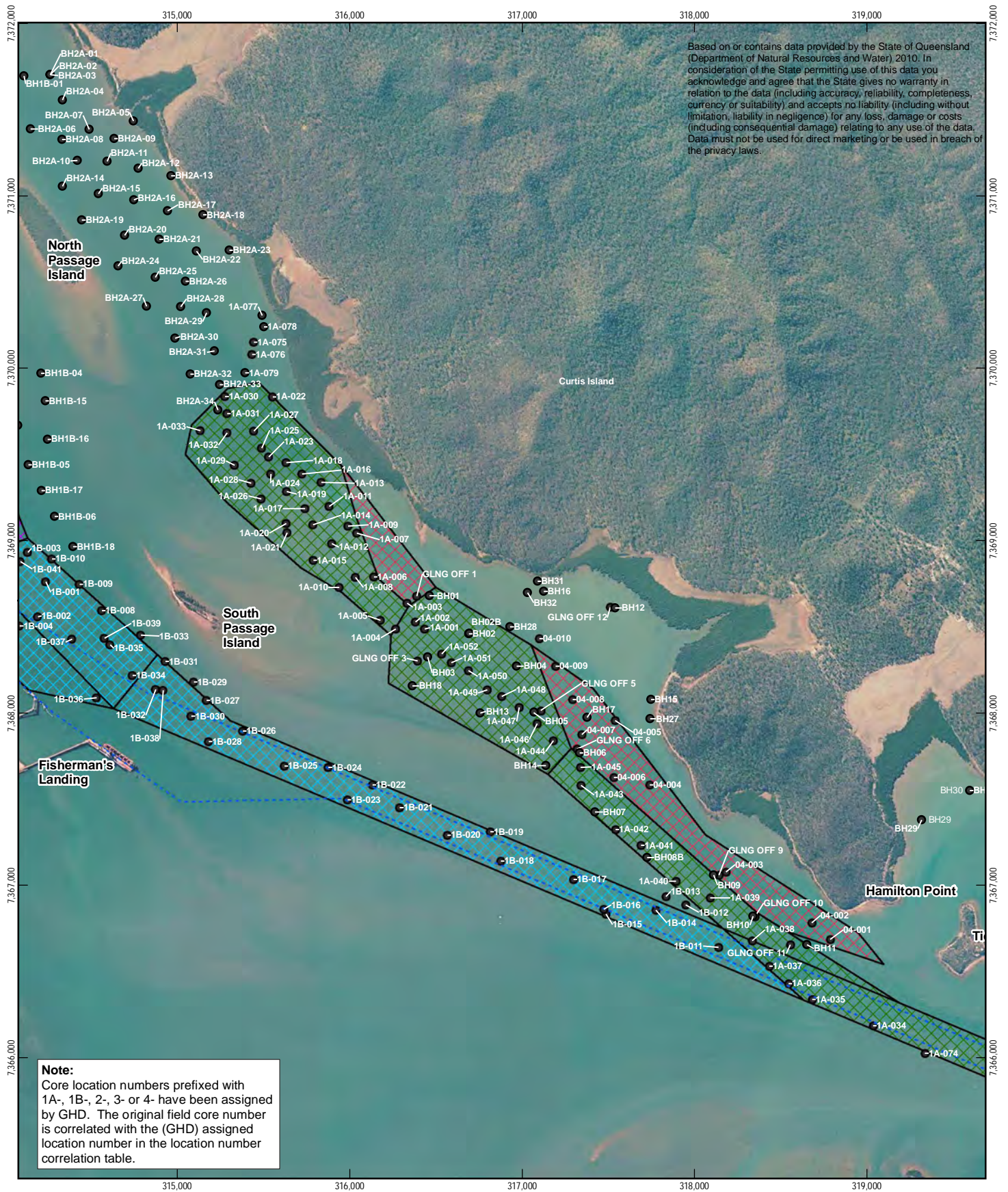
LEGEND

- Core Sample Location
- Existing Channels, Swing Basins and Berths
- Proposed Dredge Stages**
- Stage 1A - North China Bay LNG Precinct
- Stage 1B - Fisherman's Landing LNG
- Stage 2 - Laird Point LNG
- Stage 3 - Fisherman's Landing
- Stage 4 - Hamilton Point

<p>1:30,000 (at A4)</p> <p>0 200 400 600 800 1,000</p> <p>Metres</p> <p>Map Projection: Universal Transverse Mercator Horizontal Datum: Geocentric Datum of Australia 1994 Grid: Map Grid of Australia, Zone 56</p>			<p>Port of Gladstone Western Basin Dredging and Disposal Project</p> <p>Core Location Reference</p>	<p>Job Number 42-15386 Revision B Date 22 Mar 2010</p>
<p>G:\42\15386\GIS\WesternBasinProjects\MXD\WB_446_1_rev_a.mxd</p>			<p>Level 4 201 Charlotte Street Brisbane QLD 4000 Australia T +61 7 3316 3000 F +61 7 3316 3333 E bnemail@ghd.com W www.ghd.com</p>	<p>Sheet 1 of 3</p>

© 2010. This document is and shall remain the property of GHD. The document may only be used for the purpose for which it was produced. Unauthorised use of this document in any way is prohibited. While GHD has taken care to ensure the accuracy of this product, GHD Pty Ltd and Data Custodians make no representations or warranties about its accuracy, completeness or suitability for any particular purpose. GHD Pty Ltd and Data Custodians cannot accept liability of any kind (whether in contract, tort or otherwise) for any expenses, losses, damages and/or costs (including indirect or consequential damage) which are or may be incurred as a result of the product being inaccurate, incomplete or unsuitable in any way and for any reason.

Data Source: Aerial Photo (flown 2007) - © State of Queensland (Department of Environment and Resource Management), 2009.



Based on or contains data provided by the State of Queensland (Department of Natural Resources and Water) 2010. In consideration of the State permitting use of this data you acknowledge and agree that the State gives no warranty in relation to the data (including accuracy, reliability, completeness, currency or suitability) and accepts no liability (including without limitation, liability in negligence) for any loss, damage or costs (including consequential damage) relating to any use of the data. Data must not be used for direct marketing or be used in breach of the privacy laws.

Note:
Core location numbers prefixed with 1A-, 1B-, 2-, 3- or 4- have been assigned by GHD. The original field core number is correlated with the (GHD) assigned location number in the location number correlation table.

LEGEND

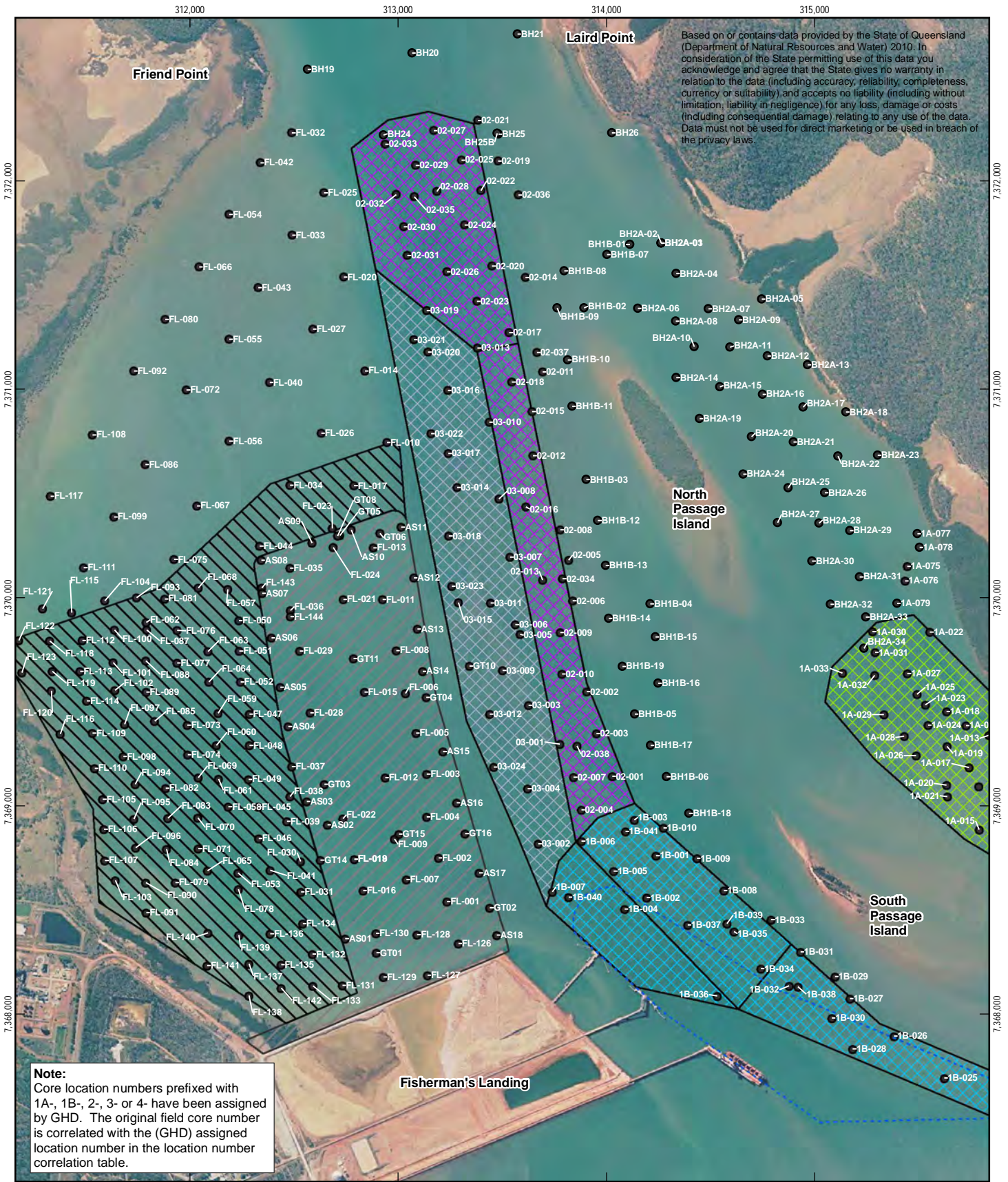
- Core Sample Location
- Existing Channels, Swing Basins and Berths
- Proposed Dredge Stages**
- Stage 1A - North China Bay LNG Precinct
- Stage 1B - Fisherman's Landing LNG
- Stage 2 - Laird Point LNG
- Stage 3 - Fisherman's Landing
- Stage 4 - Hamilton Point



Port of Gladstone
Western Basin Dredging and Disposal Project

Job Number 42-15386
Revision A
Date 17 Mar 2010

Core Location Reference Sheet 2 of 3

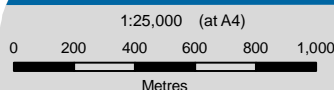


Based on or contains data provided by the State of Queensland (Department of Natural Resources and Water) 2010. In consideration of the State permitting use of this data you acknowledge and agree that the State gives no warranty in relation to the data (including accuracy, reliability, completeness, currency or suitability) and accepts no liability (including without limitation, liability in negligence) for any loss, damage or costs (including consequential damage) relating to any use of the data. Data must not be used for direct marketing or be used in breach of the privacy laws.

Note:
Core location numbers prefixed with 1A-, 1B-, 2-, 3- or 4- have been assigned by GHD. The original field core number is correlated with the (GHD) assigned location number in the location number correlation table.

LEGEND

- Core Sample Location
- ▭ Existing Channels, Swing Basins and Berths
- ▨ Western Basin Reclamation
- ▨ Fisherman's Landing Northern Expansion
- ▨ Proposed Dredge Stages
- ▨ Stage 1A - North China Bay LNG Precinct
- ▨ Stage 1B - Fisherman's Landing LNG
- ▨ Stage 2 - Laird Point LNG
- ▨ Stage 3 - Fisherman's Landing
- ▨ Stage 4 - Hamilton Point

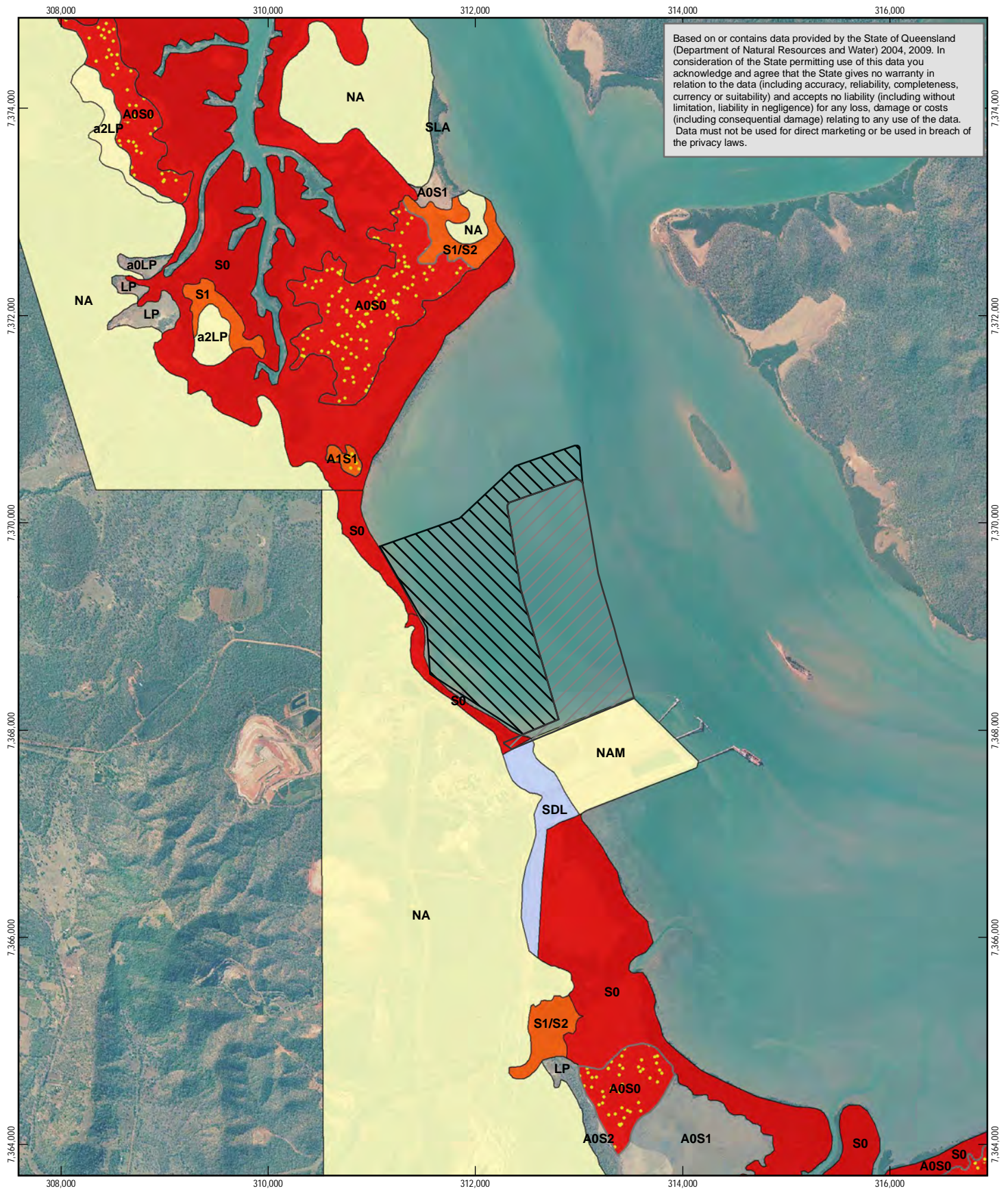


Port of Gladstone
Western Basin Dredging and Disposal Project

Job Number 42-15386
Revision A
Date 17 Mar 2010

Core Location Reference

Sheet 3 of 3



Based on or contains data provided by the State of Queensland (Department of Natural Resources and Water) 2004, 2009. In consideration of the State permitting use of this data you acknowledge and agree that the State gives no warranty in relation to the data (including accuracy, reliability, completeness, currency or suitability) and accepts no liability (including without limitation, liability in negligence) for any loss, damage or costs (including consequential damage) relating to any use of the data. Data must not be used for direct marketing or be used in breach of the privacy laws.

LEGEND

- | | | |
|--|--|--|
| Western Basin Reclamation Area | S0 - PASS (0 - 0.5m) | NA - Land not assessed for sulfidic materials |
| Fisherman's Landing Northern Expansion | S1 - PASS (0.5 - 1m) | NAM - Made land over subtidal flats and sea. |
| Acid Sulphate Soils | S1/S2 - PASS (0.5 - 2m) | a2LP - Low probability of ASS. Strong acid field pH may or may not be result of sulfide oxidation. |
| A0S0 - AASS & PASS (0 - 0.5m) | SDL - Disturbed land likely to contain ASS. Limited field investigation. | |
| A1S1 - AASS & PASS (0.5 - 1m) | | |

1:50,000 (at A4)

Map Projection: Universal Transverse Mercator
 Horizontal Datum: Geocentric Datum of Australia 1994
 Grid: Map Grid of Australia, Zone 56

Port of Gladstone
 Western Basin Dredging and Disposal Project

Acid Sulphate Soil Mapping
 for Tannum Sands and Gladstone

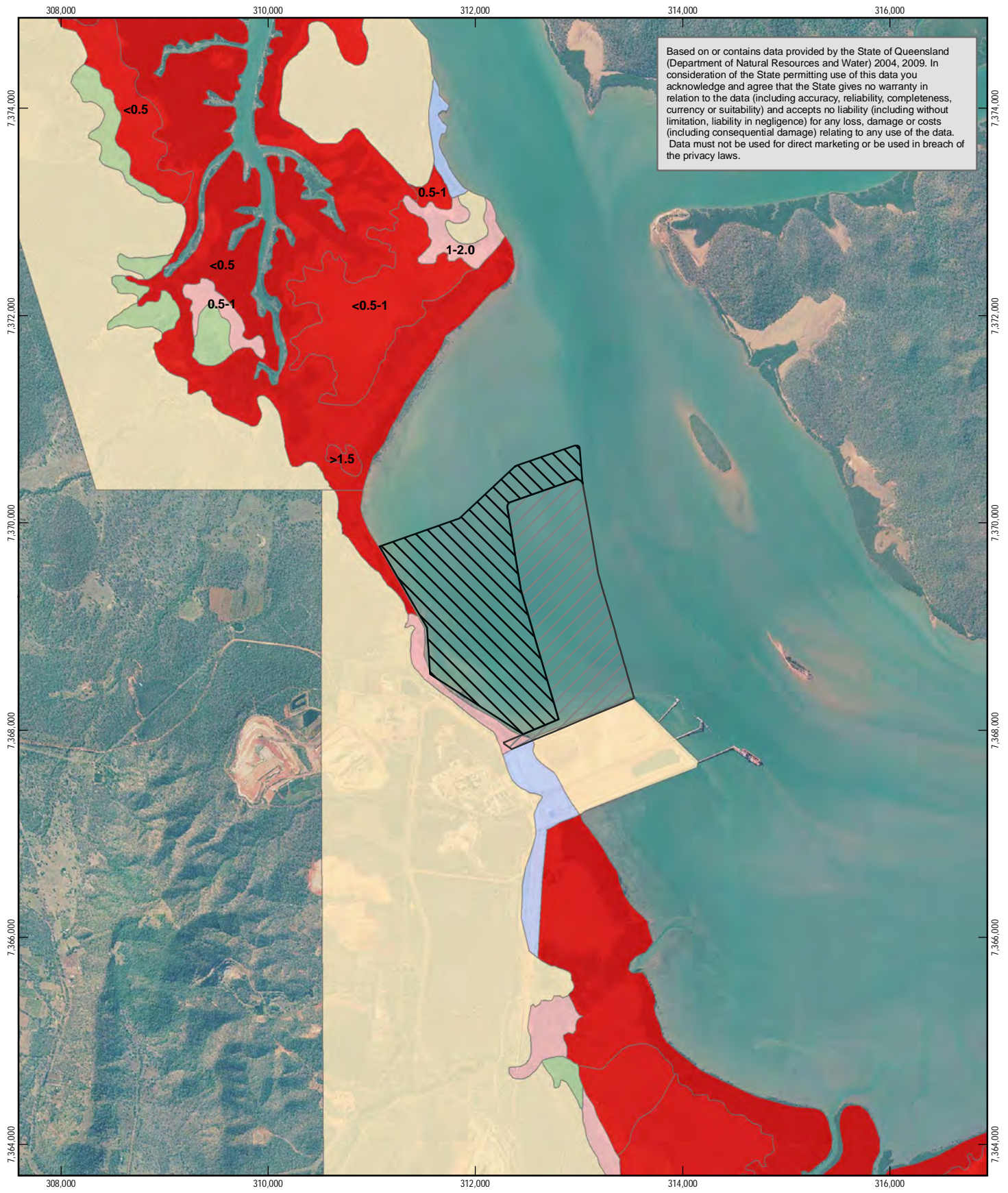
Job Number | 42-15386
 Revision | B
 Date | 01 Jan 2010

Figure 3-1

G:\42\15386\GIS\WesternBasinProjects\MXDs\WB_506_rev_a.mxd Level 4 201 Charlotte Street Brisbane QLD 4000 Australia T +61 7 3316 3000 F +61 7 3316 3333 E bnemail@ghd.com W www.ghd.com

© 2010. This document is and shall remain the property of GHD. The document may only be used for the purpose for which it was produced. Unauthorised use of this document in any way is prohibited. While GHD has taken care to ensure the accuracy of this product, GHD Pty Ltd and Data Custodians make no representations or warranties about its accuracy, completeness or suitability for any particular purpose. GHD Pty Ltd and Data Custodians cannot accept liability of any kind (whether in contract, tort or otherwise) for any expenses, losses, damages and/or costs (including indirect or consequential damage) which are or may be incurred as a result of the product being inaccurate, incomplete or unsuitable in any way and for any reason.

Data Source: Aerial Photo (flown2 007) - © State of Queensland (Department of Environment and Resource Management), 2009; Acid Sulphate Soils - © State of Queensland (Department of Environment and Resource Management), 2004.



Based on or contains data provided by the State of Queensland (Department of Natural Resources and Water) 2004, 2009. In consideration of the State permitting use of this data you acknowledge and agree that the State gives no warranty in relation to the data (including accuracy, reliability, completeness, currency or suitability) and accepts no liability (including without limitation, liability in negligence) for any loss, damage or costs (including consequential damage) relating to any use of the data. Data must not be used for direct marketing or be used in breach of the privacy laws.

LEGEND

- Western Basin Reclamation Area
- Fisherman's Landing Northern Expansion
- Potential for Acid Generation**
- Very Low
- Low
- Moderate
- High
- Not Classified
- Not Assessed

1:50,000 (at A4)

Map Projection: Universal Transverse Mercator
 Horizontal Datum: Geocentric Datum of Australia 1994
 Grid: Map Grid of Australia, Zone 56



Port of Gladstone
 Western Basin Dredging and Disposal Project

Job Number | 42-15386
 Revision | B
 Date | 01 Jan 2010

Acid Sulphate Soil Hazard Mapping for Tannum Sands and Gladstone

Figure 3-2