

LEGEND

- | | | | |
|-----------------------------------|--|------------------|-----------------------------|
| Cadastral | Western basin Reclamation Area | Flow Path | Industrial Discharge Points |
| Depression Storage Area (Assumed) | Mound Contours (10 m Interval) | Adopted Flowpath | HAT |
| Subcatchment Boundaries | Fisherman's Landing Northern Expansion | Flow Direction | LAT (Flood Level Extent) |
| | | | HAT (Flood Level Extent) |

1:10,000 (at A4)
0 50 100 150 200 250
Metres
Map Projection: Universal Transverse Mercator
Horizontal Datum: Geocentric Datum of Australia 1994
Grid: Map Grid of Australia, Zone 56



Port of Gladstone
Western Basin Dredging and Disposal Project

Job Number 42-15386
Revision A
Date 27 Aug 2009

Flood Level Extents for 100 Year ARI Event

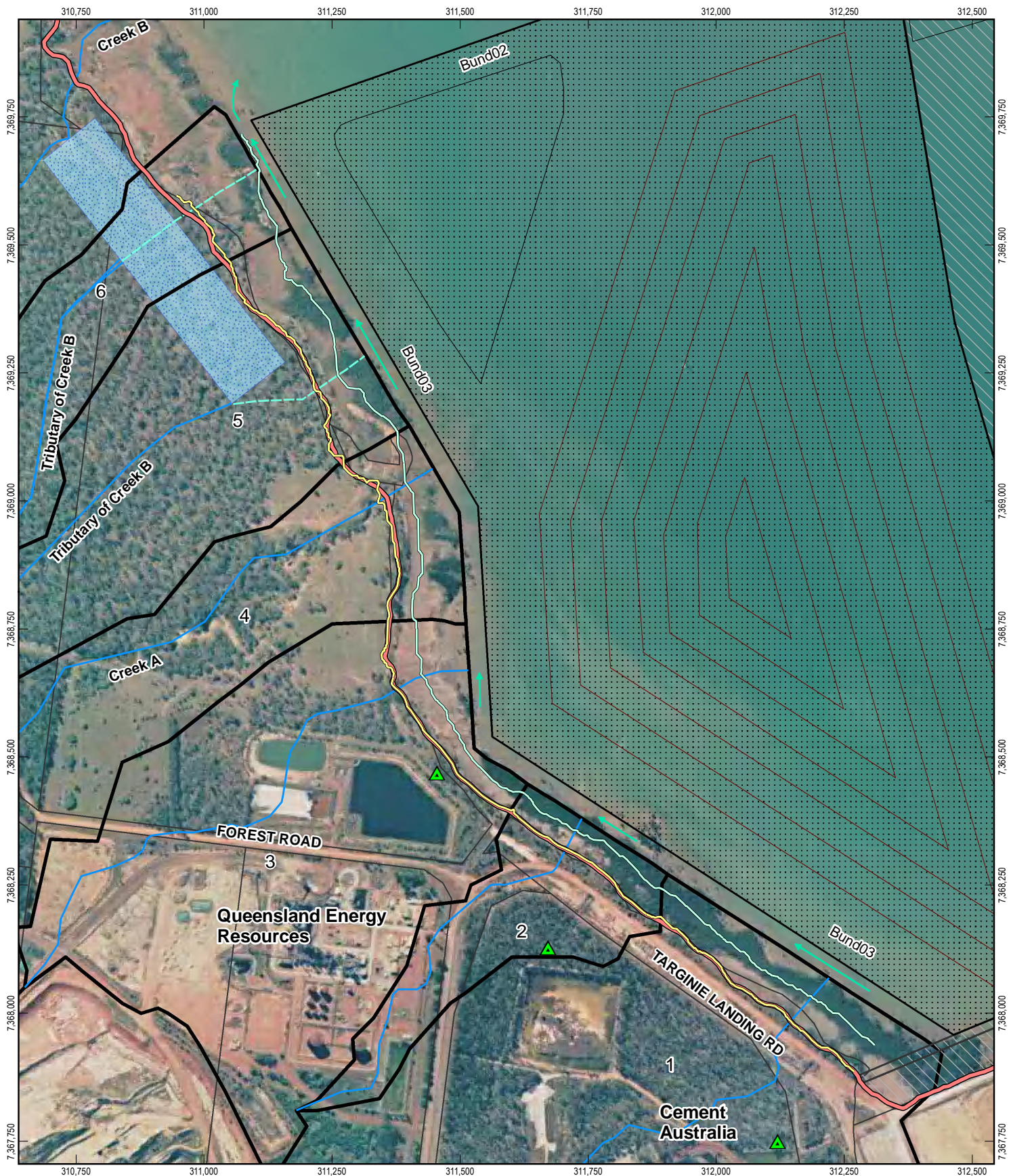
Figure 1a

G:\42\15386\GIS\WesternBasinProjects\MXD\42-15386_442_rev_a.mxd

Level 4 201 Charlotte Street Brisbane QLD 4000 Australia T +61 7 3316 3000 F +61 7 3316 3333 E bnemail@ghd.com W www.ghd.com

© 2009. This document is and shall remain the property of GHD. The document may only be used for the purpose for which it was produced. Unauthorised use of this document in any way is prohibited. While GHD has taken care to ensure the accuracy of this product, GHD Pty Ltd and Data Custodians make no representations or warranties about its accuracy, completeness or suitability for any particular purpose. GHD Pty Ltd and Data Custodians cannot accept liability of any kind (whether in contract, tort or otherwise) for any expenses, losses, damages and/or costs (including indirect or consequential damage) which are or may be incurred as a result of the product being inaccurate, incomplete or unsuitable in any way and for any reason.

This map contains data that is sourced from Data Custodians under Copyright. Please refer to EIS Appendices for Ownership and Copyright details.



LEGEND

- Cadastre
- Depression Storage Area (Assumed)
- Subcatchment Boundaries

- Western basin Reclamation Area
- Mound Contours (10 m Interval)
- Fisherman's Landing Northern Expansion

- Flow Path
- Adopted Flowpath
- Flow Direction

- Industrial Discharge Points
- HAT
- LAT (Flood Level Extent)
- HAT (Flood Level Extent)

1:10,000 (at A4)
 0 50 100 150 200 250
 Metres
 Map Projection: Universal Transverse Mercator
 Horizontal Datum: Geocentric Datum of Australia 1994
 Grid: Map Grid of Australia, Zone 56



Port of Gladstone
 Western Basin Dredging and Disposal Project

Job Number 42-15386
 Revision A
 Date 27 Aug 2009

Flood Level Extents for 2 Year ARI Event

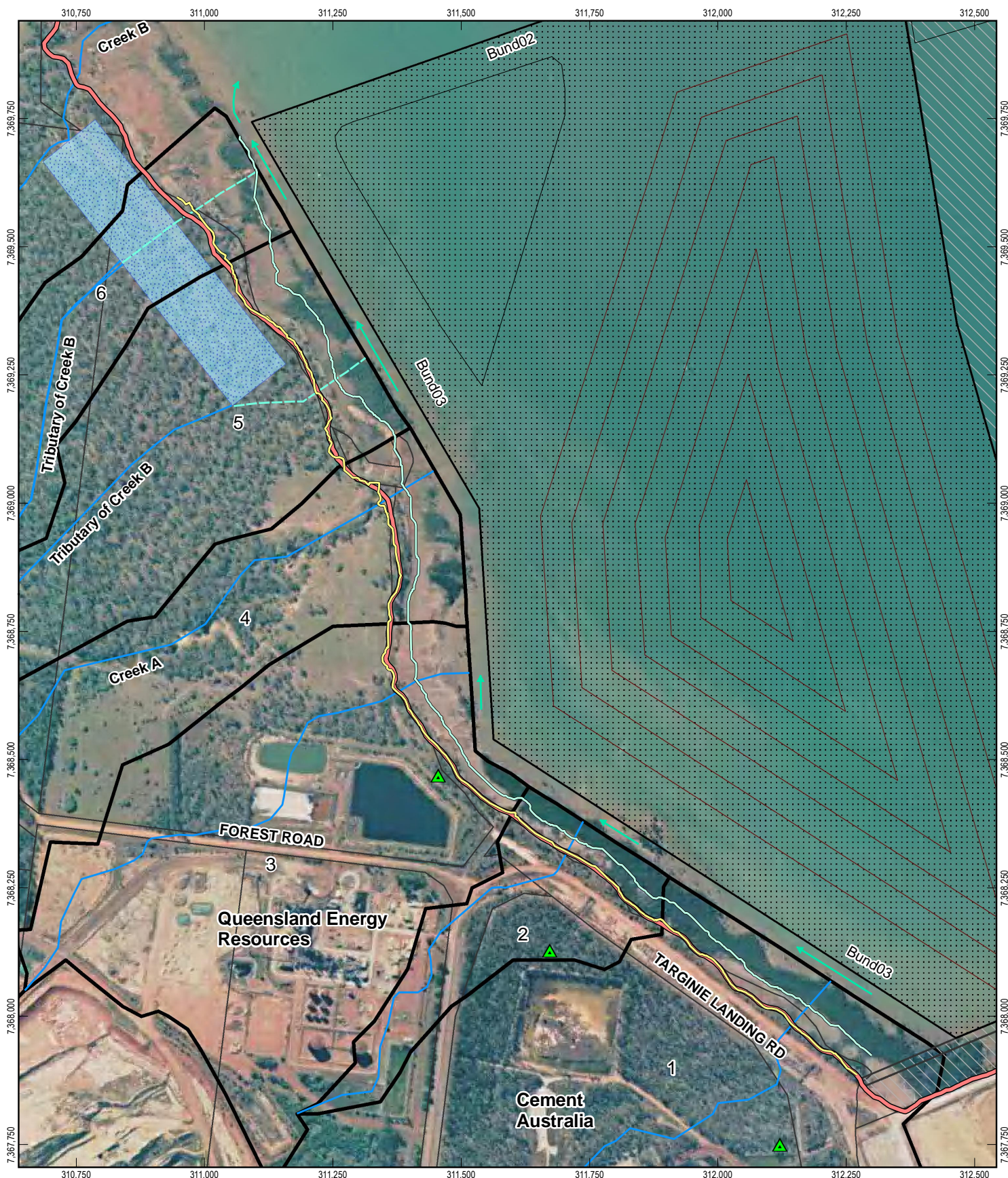
Figure 1b

G:\42\15386\GIS\WesternBasinProjects\MXDs\42-15386_439_rev_a.mxd

Level 4 201 Charlotte Street Brisbane QLD 4000 Australia T +61 7 3316 3000 F +61 7 3316 3333 E bnemail@ghd.com W www.ghd.com

© 2009. This document is and shall remain the property of GHD. The document may only be used for the purpose for which it was produced. Unauthorised use of this document in any way is prohibited. While GHD has taken care to ensure the accuracy of this product, GHD Pty Ltd and Data Custodians make no representations or warranties about its accuracy, completeness or suitability for any particular purpose. GHD Pty Ltd and Data Custodians cannot accept liability of any kind (whether in contract, tort or otherwise) for any expenses, losses, damages and/or costs (including indirect or consequential damage) which are or may be incurred as a result of the product being inaccurate, incomplete or unsuitable in any way and for any reason.

This map contains data that is sourced from Data Custodians under Copyright. Please refer to EIS Appendices for Ownership and Copyright details.



LEGEND

- | | | | |
|-----------------------------------|--|------------------|-----------------------------|
| Cadastral | Western basin Reclamation Area | Flow Path | Industrial Discharge Points |
| Depression Storage Area (Assumed) | Mound Contours (10 m Interval) | Adopted Flowpath | HAT |
| Subcatchment Boundaries | Fisherman's Landing Northern Expansion | Flow Direction | LAT (Flood Level Extent) |
| | | | HAT (Flood Level Extent) |

1:10,000 (at A4)
0 50 100 150 200 250
Metres
Map Projection: Universal Transverse Mercator
Horizontal Datum: Geocentric Datum of Australia 1994
Grid: Map Grid of Australia, Zone 56



Port of Gladstone
Western Basin Dredging and Disposal Project

Job Number 42-15386
Revision A
Date 27 Aug 2009

Flood Level Extents for 10 Year ARI Event

Figure 1c

G:\4215386\GIS\WesternBasinProjects\MXDs\42-15386_440_rev_a.mxd

Level 4 201 Charlotte Street Brisbane QLD 4000 Australia T +61 7 3316 3000 F +61 7 3316 3333 E bnemail@ghd.com W www.ghd.com

© 2009. This document is and shall remain the property of GHD. The document may only be used for the purpose for which it was produced. Unauthorised use of this document in any way is prohibited. While GHD has taken care to ensure the accuracy of this product, GHD Pty Ltd and Data Custodians make no representations or warranties about its accuracy, completeness or suitability for any particular purpose. GHD Pty Ltd and Data Custodians cannot accept liability of any kind (whether in contract, tort or otherwise) for any expenses, losses, damages and/or costs (including indirect or consequential damage) which are or may be incurred as a result of the product being inaccurate, incomplete or unsuitable in any way and for any reason. This map contains data that is sourced from Data Custodians under Copyright. Please refer to EIS Appendices for Ownership and Copyright details.