



CLIENTS | PEOPLE | PERFORMANCE

Gladstone Ports Corporation

Report for Western Basin
Strategic Dredging and Disposal
Stakeholder Consultation
and Community Engagement

July 2009



Contents

Executive Summary	i
1. Introduction	1
1.1 Stakeholder Consultation Report	1
2. Consultation Approach	2
2.1 Consultation Plan	2
2.2 Objectives	2
2.3 Link to SIA	2
2.4 Stakeholder Identification	2
3. Consultation Tools	5
4. Consultation Activities	7
4.1 Future Consultation	9
5. Consultation Outcomes	11
6. Evaluation	15

Table Index

Table 1	Influence and Interest Matrix	3
Table 2	Stakeholder Interest and Influence Matrix	4
Table 3	Consultation meetings and community engagement activities	7
Table 4	Key Issues/Concerns	11
Table 5	Evaluation of Consultation Objectives	15

Appendices

- A Stakeholder List
- B Key Messages and FAQs
- C Project Information Sheet and Community Feedback Form
- D Publication Materials
- E Project Presentation



Acronyms

CG	Coordinator General
DIP	Department of Infrastructure and Planning
EIS	Environmental Impact Statement
GPC	Gladstone Ports Corporation
IAP2	International Association of Public Participation
Plan	Consultation Plan
Project	Western Basin Dredging and Disposal Project
Report	Stakeholder and Community Consultation Report
SIA	Social Impact Assessment
ToR	Terms of Reference



Executive Summary

The Stakeholder and Community Consultation Report (this report) outlines the consultation process implemented for the Western Basin Dredging and Disposal Project (the Project) Environmental Impact Statement (EIS). The consultation program has been designed to meet the Project's Terms of Reference, particularly Part A, Section 6 – Stakeholder consultation; Part B, Section 1.8 – Public consultation process; and Part B, Section 4.1.2 – Community Engagement; as well as facilitate the preparation of the Project's Social Impact Assessment (SIA).

In June 2009 a Consultation Plan was developed outlining the framework for consultation activities in relation to the EIS for the Project. The Plan outlined the consultation procedures and methods, including objectives, key stakeholders, activities and evaluation, required to meet the Terms of Reference (ToR) for the Project. The Plan was approved by Gladstone Ports Corporation (GPC) in June 2009 and used to guide implementation of the consultation process.

In order to identify relevant stakeholders a thorough scan was conducted resulting in a preliminary stakeholder list including state authorities/agencies and representatives; local government authorities; recreational groups (including fishers and other recreational users); business and industry groups (including commercial fishers); local Indigenous groups; environmental organisations; and the broader local community.

A range of tools and activities were implemented to facilitate timely two-way information flow with all stakeholders and gain an understanding of their concerns. These included one-on-one meetings, a Project information sheet, advertising, and a project hotline and email address. Throughout all activities key messages were utilised to communicate the assessment methodology and approval process.

The opportunity to participate in the consultation process was widely communicated, with a web link on the GPC website (live from 30 June 2009), newspaper advertisements (published on 13, 27 and 30 June 2009) and an article in *Ports Talk* magazine (6 June 2009). Stakeholders were also contacted directly by telephone. As a result 13 meetings were held with a total of 80 stakeholders from local government, Indigenous group, environmental groups, recreational groups and the broader community. In addition, four community members attended a locally publicised Community Open Day. Two feedback forms were also received as a result of the consultation process.

Stakeholder and community feedback indicated that there is great interest in the environmental impacts of the Project, particularly regarding nature conservation, which was the top ranking area of concern. Also of concern were social and economic issues which featured heavily in discussions with most stakeholders. No issues were raised in regard to air quality, waste, or noise and vibration.

All feedback was acknowledged and accurately recorded in the Project database. Future consultation activities have been planned to reflect the ToR, Section 1.7.3 – Submissions. Stakeholders will be notified by the Coordinator General office regarding public release of the draft EIS. This will be communicated via a public notice in local, state and national newspapers; an article will also be placed in GPC's *Port Talk* newsletter; and a letter to all stakeholders who have registered their interest in the project through the EIS process will be directly notified.

An evaluation of the consultation process (Section 7) indicated that all objectives outlined in the ToR have been achieved, thus indicating that the ToR requirements for consultation and engagement have been fulfilled.



2. Consultation Approach

2.1 Consultation Plan

A detailed Consultation Plan (the Plan) was developed by GHD for the Project EIS and outlined the consultation procedures and methods, including key stakeholders, activities and evaluation. The Plan was submitted to GPC and approved on 9 June 2009.

2.2 Objectives

Following approval of the Plan, the consultation objectives were updated to better reflect the final ToR which was released in August 2009. The revised objectives guided the implementation of the consultation process in order to fulfil the ToR. They are to:

- » Establish an open and transparent consultation process, designed to meet both community and government agency requirements.
- » Facilitate timely two-way information flow with all stakeholders to seek an understanding of their concerns.
- » Communicate the assessment methodology and approval process to all stakeholders.
- » Work in collaboration with other components of the EIS to consider social and cultural factors, customs and values, and linkages between environmental, economic and social impact issues.
- » Produce a Consultation Report that accurately details the community engagement processes, and stakeholder comments and concerns.

2.3 Link to SIA

The Consultation Team worked closely with the Social Impact Assessment (SIA) Team to enable a collaborative approach and avoid any duplication of efforts. The Consultation and SIA components participated in joint inception meetings to align objectives and activities. Additionally, a SIA representative was present during all consultation activities.

The key issues/concerns raised throughout the consultation program helped to inform the SIA program and have been incorporated into other technical studies as part of the EIS assessment and mitigation process.

2.4 Stakeholder Identification

A preliminary stakeholder list was developed through desk-based research, analysis of existing information materials and by contacting local and state community groups and organisations. It also included the stakeholders listed in Part A, Sections 4 and 6 of the ToR and was expanded through recommendations made by stakeholder participants during implementation of consultation activities.

Due to the project occurring on unallocated state land, the Project does not involve any directly impacted landholders. Stakeholders identified as relevant to the Project include:

- » Federal Government Agencies;
- » State authorities/agencies and representatives;



1. Introduction

1.1 Stakeholder Consultation Report

The Stakeholder and Community Consultation Report (this report) outlines the consultation process implemented for the Western Basin Dredging and Disposal Project. The consultation program has been designed to meet the Project's Terms of Reference, particularly Part A Section 6 – Stakeholder consultation; Part B Section 1.8 – Public consultation process; and Part B section 4.1.2 – Community engagement; as well as facilitate the preparation of the Project's Social Impact Assessment (SIA).

This report outlines the consultation approach that was applied; the tools and activities that were implemented; and summarises the outcomes of the consultation process. The mitigation measures identified in relation to stakeholder concerns are outlined in the Social Chapter of the EIS (Chapter 13).



- » Local government authorities;
- » Recreational groups (including fishers and other recreational users);
- » Business and industry groups (including commercial fishers);
- » Local Indigenous groups;
- » Environmental organisations; and
- » Broader local community.

To assess the potential level of stakeholder involvement in the Project, a matrix of interest and influence was prepared (refer to Table 1). The matrix is based on the following elements:

- » **Interest:** the level of interest of the stakeholder group (high, medium or low); and
- » **Influence:** the level of influence of the stakeholder group (high, medium or low). The level of influence is determined by the stakeholder group's position in the community, political influence or their attitude to project specific issues.

The interest and influence ratings were used to determine the potential involvement for each of the stakeholder groups. Where stakeholders were perceived to have a high level of potential project involvement, it was considered more appropriate to hold face-to-face meetings/briefings. For those stakeholders who were considered to have medium or low potential involvement general information dissemination, such as a Project information sheet and Community Open Day, were considered appropriate.

Table 1 provides a summary of the potential level of interest and influence for each stakeholder group engaged during the consultation process.

Table 1 Influence and Interest Matrix

	Interest		
Influence	High	Medium	Low
High	High potential involvement	Medium potential involvement	Medium potential involvement
Medium	High potential involvement	Medium potential involvement	Low potential involvement
Low	Medium potential involvement	Low potential involvement	No potential involvement



Table 2 outlines the level of interest and influence of each stakeholder group.

Table 2 Stakeholder Interest and Influence Matrix

Stakeholder Group	Potential Involvement
Local government authorities	High
State Government Agencies	High
Federal Government Agencies	High
Environmental organisations	High
Local industry groups	Medium - High
Local business groups	Medium
Recreational groups	High
Local Indigenous groups	Medium-High
Broader local community	Medium
Local community organisations	Medium

A range of communication tools were utilised to communicate and consult with key stakeholders, these are outlined in Section 4. A detailed list of consulted stakeholders can be viewed in Appendix A.



3. Consultation Tools

A range of tools were implemented to enable opportunities for discussion with key stakeholders to explain the project, identify issues and respond to concerns. Taking into account the stakeholders, the EIS timeframe and the consultation objectives, the following tools were developed and utilised as part of the EIS process:

» **Key Messages and Frequently Asked Questions**

Key Messages and Frequently Asked Questions were developed and distributed to project team members to assist in providing a clear, consistent approach to communicating with stakeholders throughout the consultation process.

A copy of the Key Messages and Frequently Asked Questions is provided in Appendix B.

» **Information Sheet and Community Feedback Form**

An information sheet was produced which contained detailed information about the Project and the EIS process. The information sheet included a community feedback form inviting stakeholders to provide comments on the proposed project to help inform the EIS process. The community feedback form included a reply paid postal address.

The information sheet and feedback form were distributed at all consultation events.

A copy of both materials is provided in Appendix C.

» **Project hotline and email**

A 1800 phone number (1800 108 807) and project email address (westernbasin@ghd.com.au) were established as key communication channels. These contact details were promoted on all project communication materials including advertisements, web link and stakeholder letters.

All enquiries/complaints received via these channels were acknowledged within 48 hours, with details entered into the stakeholder database for monitoring and management purposes.

» **Media and publications**

One public notice and one community open day invitation were featured in the *Gladstone Observer* (the invitation was published in two editions) to inform the community about the Project, EIS consultation activities and the project contact details (1800 number, project email address and web link). In addition, one article was featured in GPC's *Port Talk* publication. *Port Talk* is distributed with Saturday's edition of the *Gladstone Observer* which has a circulation of 11,000 people. These materials introduced the project, notified the public of the commencement of the EIS process and provided project contact details. These publication materials can be viewed in Appendix D.

The distribution of these publications ensured that a wide range of stakeholders were informed of consultation activities, and opportunities to provide feedback. This enabled discussion with the wider Gladstone community and likely affected parties.

» **One-on-one and group meetings**

The GHD consultation team coordinated and facilitated one-on-one and small group meetings to introduce the Project, discuss the EIS process and to seek feedback and comments about potential impacts that may be associated with future development of the Project.



Project presentations were developed and presented at a number of the consultation meetings. A copy of the general presentation is included in Appendix E.

» **Community Working Group (CWG)**

GHD coordinated and facilitated one meeting with GPC's CWG to provide members with project information and updates on the EIS process, and to seek feedback and comments about potential impacts that may be associated with future development of the Project. This group comprises 12 representatives from GPC, Gladstone Regional Council, Environment Protection Agency (EPA), QR (Queensland Rail) and the local community.

» **Community Open Day**

A Community Open Day was facilitated by the GHD consultation team to provide the broader community with Project information and enable interested people the opportunity to speak directly with project personnel. The event was staffed by three GPC representatives and four GHD project team members.

Information materials that were made available at the open day included project information sheets (including feedback form) and CD copies of the Project's Initial Advice Statement which were distributed to interested stakeholders.

» **Web link**

Website content was prepared and updated to provide project information, inform stakeholders of upcoming consultation activities and updates on the EIS process, provide contact details and access to the project site map and further project information. (http://www.gpcl.com.au/current_projects.html)

» **Thank you letter**

A thank you letter was prepared and distributed to all stakeholders groups who took part in the consultation activities. The letter thanked stakeholders for their participation and input, and advised on how their input was incorporated into the draft EIS. It also provided information on future opportunities for stakeholder input regarding the project's post EIS development activities.



4. Consultation Activities

Table 3 below summarises the activities, timings and stakeholder participants that were engaged throughout the consultation process for the Project.

These activities provided opportunities for open and transparent dialogue with the Gladstone community and other interested stakeholders, including local authorities and relevant federal and state authorities, in order for stakeholders and the community to learn about the Project, and voice their issues and concerns. A summary of the feedback received is outlined in Section 5.

The activities listed below correspond to those outlined in the Plan and have all been completed.

Table 3 Consultation meetings and community engagement activities

Stakeholder Category	Stakeholder	Activity and Timing
Local government authority	Gladstone Regional Council	Consultation meeting and presentation 7 July 2009
State Agencies/ Authorities & Elected Representatives	Department of Employment, Economic Development and Innovation / Gladstone Regional Development Centre	Consultation meeting 2 July 2009 Notification of draft Terms of Reference for public comment 15 July 2009
	Great Barrier Reef Marine Park Authority (GBRMPA)	Consultation meeting 30 June 2009 Notification of draft Terms of Reference for public comment 15 July 2009
	Department of Infrastructure and Planning, Social Impact Unit	Consultation meeting 3 August 2009
	State Member for Gladstone	Consultation meeting 7 July 2009 Notification of draft Terms of Reference for public comment 15 July 2009



Stakeholder Category	Stakeholder	Activity and Timing
	Department of Communities	Notification of draft Terms of Reference for public comment 15 July 2009
Stakeholder Category	Stakeholder	Activity and Timing
Federal Government Agencies	Department of the Environment, Water, Heritage and the Arts	Consultation meetings 22 and 23 July 2009
Environmental organisations	Fitzroy Basin Association	Consultation meeting 2 July 2009
	Tannum-Boyne Coast Care and Central Queensland University representatives	Consultation meeting 1 July 2009
	Capricorn Conservation Council	Consultation meeting 30 June 2009
	Fitzroy Basin Association	Consultation meeting 2 July 2009 Notification of draft Terms of Reference for public comment 15 July 2009
	Central Queensland University – Centre for Environmental Management	Consultation meeting 1 July 2009
Business and industry groups	Gladstone Area Promotion and Development Limited	Consultation meeting 1 July 2009
	Local commercial fishing representatives	Consultation meeting 2 July 2009
	Queensland Seafood Industry Association	Consultation meeting 29 July 2009
Recreational groups	Gladstone Local Marine Advisory Committee (LMAC) and Gladstone Sportsfishing Club	Consultation meeting 2 July 2009
	Info Fish	Consultation meeting 30 June 2009



Stakeholder Category	Stakeholder	Activity and Timing
Local Indigenous groups	Port Curtis Coal Coast People (PCCC)	Consultation meetings and presentation 15 June 2009 and 14 July 2009 Notification of draft Terms of Reference for public comment 15 July 2009
Broader local community	Community Working Group	Consultation meeting and presentation Scheduled for 14 August 2009
	General community	Community Open Day 1 July 2009
All stakeholders		Newspaper advertisements Published 13, 27 and 30 June 2009
		<i>Port Talk</i> article Published 6 June 2009
		Project web link Live from 30 June 2009
Consulted stakeholders		Follow up letter Sent in early August 2009

4.1 Future Consultation

Future consultation activities have been planned to reflect the ToR, Section 1.7.3 - Submissions which specifies that stakeholders “*should be informed as to how and when public submissions on the EIS will be addressed and taken into account in the environmental assessment and decision-making processes.*”

Following the Coordinator General’s acceptance of the draft EIS, the document will be subject to a public exhibition period for approximately 30 days. As part of the public exhibition period the GHD Consultation team will work in collaboration with GPC to notify stakeholders about the process, timeframes and locations (e.g. GPC office, local library) where people can review the document and provide written submission to the Coordinator General. The Coordinator-General’s office will notify the public about the release of the draft EIS document via a public notice in national, state and local papers. A weblink to the document will also be made available on DIP’s website.

In addition, GPC will include an article in *Port Talk* newsletter, GPC’s weblink and a letter will be distributed to all stakeholders listed on the project’s database. Information will include notification about



the public release of the draft EIS document, how to obtain a copy and provide written submissions to the Coordinator General.

4.1.1 Post EIS public exhibition period

Following completion of the public exhibition period, all stakeholder and community feedback will be reviewed and addressed in the final EIS document. A decision by the Coordinator-General about a future development of the project will be made public via the DIP and GPC websites. It is envisaged that GPC will provide future updates about the progress and status of the Project in its *Port Talk* publication and through representatives of the CWG.



5. Consultation Outcomes

This section provides a summary of the feedback received during the consultation process.

The feedback was received during the consultation activities and via returned feedback forms. Despite wide distribution of the feedback forms, the consultation team only received a total of two feedback forms throughout the EIS process.

The key issues / concerns raised throughout the consultation program have been categorised into broader sub-groupings according to the ToR. These issues and concerns have helped to inform the SIA program and have been incorporated into other technical studies as part of the EIS process.

Table 4 below provides a list of the key issues / concerns raised throughout the consultation program and a cross-reference to the relevant section/s of the ToR.

Table 4 Key Issues/Concerns

Key issues/concerns	Relevant ToR Section
Climate and Climate Change	3.1
Consideration of climate change impacts (more cyclones, tidal surges, higher swells).	3.1
Land (geology, soils, land use and tenure, topography and landscape character, land contamination, transport)	3.2
Potential effect on the Shale Oil lease area.	3.2.3
Potential for leaching/outfall from on-site dredging spoil during dredging period and after the reclamation is established.	3.2.5
Nature Conservation (sensitive environmental area, terrestrial flora and fauna, marine flora and fauna)	3.3
Potential impacts on shorebird and migratory bird breeding/roosting areas.	3.3.3
Changes to tidal flows through the port (i.e. hydrological impacts of the project).	
Direct impact on mangroves along the mainland coastline and potential for secondary impacts on mangroves surrounding the project site due to the project's effect on tidal movements and siltation.	3.3.4
Direct seagrass disturbance and potential for flow-on impacts on seagrass due to the project's effect on tidal movements, turbidity and siltation.	3.3.4
Potential impacts on dugongs due to loss of sea grass habitat. Dugongs in the Gladstone Harbour area are related and connected to the dugongs in the Great Sandy Strait. With the reduction of dugong habitat, there is a good chance that the dugongs will become genetically isolated.	3.3.4
Potential impacts on turtles due to loss of sea grass habitat.	3.3.4
Potential impacts on snub fin and pacific humpback dolphins.	3.3.4
Potential for the project to cause deterioration in the quality of the adjacent marine habitat, which is a recognised recreational fishing location and contains sea grass	3.3.4



Key issues/concerns	Relevant ToR Section
and mangrove fauna.	
Potential for silt build up on the northern and southern sides of the proposed reclamation and in neighbouring creeks. This may cause crab holes to silt up. The crab holes are an important micro-ecosystem as they retain the juvenile prawns and fish at low tide.	3.3.4
Marine animals may get stuck in the section between the proposed reclamation and the mainland coast during periods of low tides.	3.3.4
Concerns kookaburra shells would be found in the spoil. The shell is home to a mollusc which has been identified as endemic to Gladstone Harbour.	3.3.4
Alternative dredging spoil disposal options need to be better considered (e.g. off-shore or land disposal) to reduce impact on sea grass and other marine vegetation.	3.3.4
Concern that environmental offsets cannot be appropriately implemented.	3.3.1
Water Resources (surface water and watercourses, groundwater)	
No issues recorded.	
Coastal Environment (marine water and sediment, coastal processes, matters of national environmental significance)	
3.5	
Increased turbidity due to dredging and flow-on impacts resulting from a decrease in water quality.	3.5.1
Increased turbidity due to dredging and flow-on impacts resulting from a decrease in water quality.	3.5.1
Potential for silt build up on the northern and southern sides of the proposed reclamation.	3.5.1
Potential for dredging to disturb the existing contaminants in the harbour.	3.3.1
Alternative shapes for the bund wall could be considered to prevent impact on tidal flows.	3.5.2
Dredging could be staged/timed (according to tides) to reduce environmental impacts such as turbid plumes.	3.5.1
Air quality, noise and vibration (greenhouse gas emissions and abatement, climate change adaptation)	
No issues recorded.	
Waste (waste generation and management)	
No issues recorded.	
Cultural Heritage (indigenous and non-indigenous)	
3.8	
Concern over how little influence traditional owners may have on decisions regarding the project.	3.8.1.1
There is a gradual decrease in the ability to manage land and waters in a traditional manner due to increased project development timeframes. This has a negative impact by decreasing the ability of traditional owners to meet their cultural responsibilities, which impacts on an individual's cultural identity and self-	3.8.1.1



Key issues/concerns	Relevant ToR Section
esteem and reduces the ability for cultural maintenance.	
It is important for GPC and local Indigenous groups to develop a continuous working relationship and to work together to monitor existing and future project impacts.	3.8.1.1
Social	4.1
Opportunities for employment.	4.1.1
Need to consider cumulative impacts from other projects in the area.	4.1.1
Scepticism regarding the community consultation and EIS process.	4.1.2
There is a need for honesty in the assessment process, especially concerning environmental issues.	4.1.2
Need for open communication.	4.1.2
There is value in the Graham Creek area as you can feel like you are away from the industry – this relates to health and wellbeing. Visual amenity is the key to this.	4.1.1
GPC is acting arrogantly, like they own the port, when the port really belongs to the community.	4.1.2
Loss of recreational fishing sites.	4.1.1
Further restriction on areas that can be fished, due to exclusion zones resulting from the project and the future potential developments it is catering for.	4.1.1
Potential impacts on productive recreational crabbing sites, particularly the mangrove areas surrounding the proposed reclamation site. The mainland coast near the project area provides land and road access to crabbing sites and is one of the few easy access points in close proximity to Gladstone. Areas along the west coast of Curtis Island are also used for recreational crabbing.	4.1.1
Boat access, particularly in relation to transiting out of Auckland Creek and between the Narrows and Graham Creek.	4.1.1
Increase in recreational boat use leading to high demand on boat ramp facilities.	4.1.1
Cumulative impacts as a result of other proposed developments in this area are also of concern.	4.1.1
Economy	5.1
Concern that the State Government will choose the economic benefits over the environmental costs.	5.1.2
Potential impacts on productive commercial sites from dredging activity and changes in tidal flows caused by the reclamation development. This is especially relevant to coastal points north of the existing Fisherman's Landing facility, such as Friend Point. Commercial fishers currently conduct netting "shots" on particular tidal flows from these points.	5.1.2
Potential impact on catches of important commercial species including: Blue Salmon, Thread Fin Salmon, Barramundi and prawns.	5.1.2
Need to consider monetary compensation/buy-out due to impacts from loss of productive areas. The government could consider closing off the whole harbour area to commercial fishing and providing appropriate compensation.	5.1.2



Key issues/concerns	Relevant ToR Section
Potential impacts on productive commercial crabbing sites located along the mainland coast north and south of the existing Fisherman's Landing facility and along the west coast of Curtis Island.	5.1.2
Further restriction on areas that can be fished due to exclusion zones. Commercial fishers are particularly sensitive to this as they are currently impacted by EPA protection zones, and security zones around other wharfs and shipping channels. There is also currently a 400m exclusion zone around existing wharfs, due to the harbour being Zone B Dugong Procreation Area.	5.1.1
Impact of the economic downturn on the project and, more broadly, on the Gladstone community.	5.1.1
The project would improve the sustainability of demand for the GPC workforce.	5.1.2
Types of dredges that will be used and crews to work on the equipment.	5.1.2
The LNG proponents should pay for dredging spoil disposal.	5.1.2
Potential for cumulative impacts from various projects in the area. There is a need to assess the impacts from various projects as a whole and stop the <i>ad hoc</i> development of the harbour.	5.1.1
Hazard and risk	6
Potential increase in the amount of shipping traffic.	6
The use of the haul road during bund construction.	6
Gladstone Port and the proposed reclamation site contain various recognised fish nursery areas.	6
Safety for recreational and commercial boaters due to increased ship movements, potential changes to tidal flows and reduction of the existing protective sand bars.	6
Cumulative Impacts	n/a
The project will facilitate the further development of Curtis Island.	1.4

Table 4 indicates that there is greatest interest in the environmental impacts of the Project, particularly regarding nature conservation, which was the top ranking area of concern. Also of concern were social and economic issues which featured heavily in discussions with most stakeholders. No issues were raised in regard to air quality, waste, or noise and vibration.

6. Evaluation

A critical component of the consultation plan is the monitoring and evaluation of performance. Table 5 outlines the evaluation framework applied to measure how the consultation process met the objectives of the ToR.

Table 5 Evaluation of Consultation Objectives

Objective	Activities	Indicators	Means of Verification
<ul style="list-style-type: none"> » Establish an open and transparent consultation process, designed to meet both community and government agency requirements. 	<ul style="list-style-type: none"> » Consultation Plan prepared in accordance with ToR and IAP2 » All feedback accurately reported » Consultation Report drafted 	<ul style="list-style-type: none"> » Consultation Plan (including framework and approach) » Stakeholder database » Consultation Report 	<ul style="list-style-type: none"> » Consultation objectives reflect ToR » Consultation process adheres to IAP2 framework » Consultation approach and activities are guided by the ToR » Stakeholder database accurately maintained » Stakeholder feedback reflected in the Consultation Report
<ul style="list-style-type: none"> » Facilitate timely two-way information flow with stakeholders to seek an understanding of their concerns. 	<ul style="list-style-type: none"> » Key stakeholders identified during Stakeholder Scan » Two-way communication channels established » Consultation activities designed to enable feedback and discussion » Communication channels are monitored regularly and feedback received is acknowledged in a timely manner 	<ul style="list-style-type: none"> » Stakeholder list » Consultation Plan » One-on-one meetings » Community Working Group meeting » Community Open Day » 1800 number and project email » Feedback forms » Stakeholder database 	<ul style="list-style-type: none"> » All key stakeholder groups were represented at Consultation Activities and provided feedback » One-on-one meetings facilitated » Community Open Day hosted and staffed » Community Working Group meeting was hosted » All queries were acknowledged within 48 hours, closed out and recorded

Objective	Activities	Indicators	Means of Verification
<ul style="list-style-type: none"> » Communicate the assessment methodology and approval process to all stakeholders. 	<ul style="list-style-type: none"> » Key Messages developed » Channels and timeframes for community input are outlined in Project/communication materials » All stakeholders who participated in the consultation process will be advised when the draft EIS is available 	<ul style="list-style-type: none"> » Key Messages » Information Sheet and Frequently Asked Questions » Media and publications » One-on-one meetings » Community Working Group meeting » Community Open Day » Website Content » Thank you letter 	<ul style="list-style-type: none"> » Key messages relevant and communicated in all materials and at all meetings » Information sheets distributed » Consultation process and activities e.g. Community Open Day, were advertised in local media and <i>Ports Talk</i>
<ul style="list-style-type: none"> » Work in collaboration with other components of the EIS to consider social and cultural factors, customs and values, and linkages between environmental, economic and social impact issues. 	<ul style="list-style-type: none"> » Consultation approach designed to allow input from other components of the EIS » Consultation objectives drafted in conjunction with SIA team 	<ul style="list-style-type: none"> » Meetings with other technical study teams involved in the EIS » The Consultation Team worked closely with the Social Impact Assessment (SIA) Team 	<ul style="list-style-type: none"> » The Consultation and SIA components participated in joint inception meetings to align objectives and activities » A Social Impact Assessment representative was present during all consultation activities » Project Manager was involved in the implementation of consultation activities » Key issues/concerns raised throughout the consultation program helped to inform the SIA program and have been incorporated into other technical studies as part of the EIS process » Key issues/concerns raised are cross referenced to other sections of the ToR

Objective	Activities	Indicators	Means of Verification
<ul style="list-style-type: none"> » Produce a Consultation Report that accurately details the community engagement processes, and stakeholder comments and concerns. 	<ul style="list-style-type: none"> » Consultation Report prepared in accordance with ToR » Consultation approach and activities allow for feedback to be recorded and included in a final Consultation Report (this report) 	<ul style="list-style-type: none"> » Consultation Report » Stakeholder Database 	<ul style="list-style-type: none"> » Consultation Report accurately details consultation activities » Consultation Report accurately outlines feedback and comments received by stakeholders during consultation activities



Appendix A
Stakeholder List



Stakeholder Category	Agency/Organisation	Number of representatives
Proponent	Gladstone Ports Corporation (GPC)	5
Local government authority	Gladstone Regional Council	10
State Agencies/ Authorities & Elected Representatives	Department of Infrastructure and Planning	3
	Department of Communities	1
	Great Barrier Reef Marine Park Authority	1
	Member for Gladstone	1
	Department of Employment, Economic Development and Innovation – inclusive of Department of Mines and Energy, Department of Primary Industries and Fisheries, Department of Tourism, Regional Development and Industry	4
	Department of Environment and Natural Resource Management – inclusive of Department of Natural Resources and Water and Environmental Protection Agency	7
Federal Government Agencies	Department of the Environment, Water, Heritage and the Arts	2
Environmental organisations	Fitzroy Basin Association	1
	Tannum-Boyne Coast Care	1
	Central Queensland University – Centre for Environmental Management	3
	Capricorn Conservation Council	3
Business and industry groups	Gladstone Area Promotion and Development Limited	1
	Local commercial fishing representatives	3
	Queensland Seafood Industry Association	1
Recreational groups	Gladstone Local Marine Advisory Committee (LMAC)	4 (one was joint LMAC and GSC)
	Gladstone Sportsfishing Club (GSC)	2
	Info Fish	1
Local Indigenous groups	Port Curtis Coral Coast People (PCCC)	10
Broader local community	Community Working Group	12
	General community	4



Appendix B
Key Messages and FAQs



EIS Key Messages

- » The Gladstone Ports Corporation has commenced an Environmental Impacts Statement (EIS) as part of pre-feasibility studies to support a future development of the Western Basin Dredging and Disposal Project, located within the Port of Gladstone.
- » The purpose of the EIS is to explore the potential environmental, cultural, social and economic impacts that may be associated with the proposed Project.
- » Consultation with the stakeholders and the community is an essential part of the EIS process. Feedback received will be considered, assessed and reported in accordance with the Coordinator General's Terms of Reference for an EIS.
- » GHD has been engaged to conduct the EIS on behalf of the Gladstone Ports Corporation.
- » A final decision on the EIS for the Western Basin Dredging and Disposal Project is expected by the Coordinator General in March 2010.

Project Key Messages

- » The Port of Gladstone is a key part in the transport chain for the Fitzroy region and adjacent parts of Central Queensland.
- » The Western Basin Dredging and Disposal Project seeks to accommodate the long term dredging and dredged material disposal that is required to provide safe and efficient access to the existing and proposed Port facilities in the harbour over the foreseeable future
- » The proposed dredging is required to deepen and widen existing channels and swing basins, and to create new channels, swing basins and berth pockets, as part of the overall development plan for the Port of Gladstone.
- » The project will provide ready access to port infrastructure for import or export of product, and as such the local, state and national economies will ultimately benefit.
- » Further industrial development in the region will support the growth of local industry, boost employment and build a strong and diversified regional economy.



Frequently Asked Questions

Q1. What is the Western Basin Dredging and Disposal Project?

The Port of Gladstone Western Basin Dredging and Disposal Project seeks to accommodate the long term dredging and dredged material disposal that is required to provide safe and efficient access to the existing and proposed Port facilities in the harbour over the foreseeable future.

Two areas of development are required for the long term strategic development of the Port:

- » The Western Basin dredging and reclamation works are required for access to proposed wharf facilities located in the Western Basin area of the port and for the disposal of dredged material; and
- » The outer harbour works are associated with the duplication of channels to account for increased traffic through the port and will be investigated at a later stage.

The development of the Western Basin will incorporate dredging associated with the deepening and widening of existing channels and swing basins, and the creation of new channels, swing basins and berth pockets.

Q2. How much dredging will occur?

The footprint of the dredging works will be refined during the EIS process. Material dredged during the Western Basin development is proposed to be placed into reclamation areas to create a land reserve to be used to service the new port facilities. The proposed Western Basin reclamation is 10 km north of Gladstone City immediately adjacent to the existing Fisherman's Landing reclamation and proposed 153 ha Fisherman's Landing reclamation. The final footprint of the Western Basin reclamation is currently undergoing an options assessment process.

Q3. How will the dredging be conducted?

There are currently a number of proponents undertaking investigations into sites within the Western Basin. Investigations are being undertaken to determine the nature of the material to be dredged and the navigation and berthing requirements of the likely proponents. These investigations will allow both the method of dredging and the final dimensions and footprints of the channels, swing basins and berth pockets to be determined.

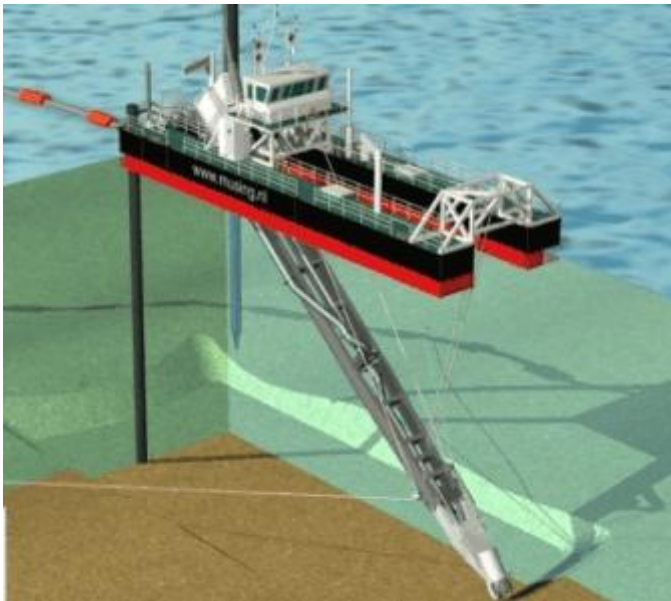
The two main dredging options being considered are cutter suction dredge and trailer hopper suction dredge. The preferred option is one which allows direct pumping of dredge material into the reclamation areas.

Based on the outcomes of initial geotechnical investigations and dredging methodology reviews, it is possible that blasting may be required in small areas where hard material is located. It is also likely that the coarse nature of some of the material and the distance from the eastern most dredging footprint to the proposed reclamation will be too long to allow all the works to be completed by cutter suction dredges which pump the dredged material via pipelines into the reclamation. Therefore, some of the material may need to be removed with a trailer hopper suction dredger, then placed on the seabed closer to the reclamation and rehandled into the reclamation using a cutter suction dredge.

The dredging of the Western Basin will occur in stages and the rate of development will be controlled by the demands of industry locating in the Gladstone region and requiring access to port facilities. It is recognised that not all of the current proponents investigating sites in the Western Basin may proceed with the current proposals. Therefore, flexibility in the final dimensions and exact footprint of the areas to be dredged must be maintained. The Environmental Impact Statement will address all stages of development and the overall footprint of development. Operational works approvals will be sought for each project stage as they are required. If additional detailed investigations are required once dredging methods, dimensions and footprints have been defined, these will be addressed in the operational works approvals phase.

Q4. What does a cutter suction dredge look like? How does it work?

A cutter-suction dredge operates by sucking through a long tube, like some vacuum cleaners but on a big scale. The dredger's suction tube has a cutter head at the suction inlet, to loosen the earth and transport it to the suction mouth. The cutter can also be used for hard surface materials like gravel or rock. The dredged soil is usually sucked up by a wear-resistant centrifugal pump and discharged through a pipe line or to a barge.



Q5. Will this dredging definitely go ahead?

Dredging will proceed as proponents (LNG or others) commit to their individual projects. Some LNG proponents have indicated some dredging works may commence as early as mid 2010. This is subject to proponent commitment and gaining of the relevant statutory (government) approvals.

Q6. If the Project proceeds what are the likely effects on noise and air quality?

Some temporary noise impacts may be experienced by marine fauna during individual dredging campaigns, however this is not expected to be significant. It is anticipated that there will be no noise impacts to local residents and business.



Air Quality – The placement of rock during construction the final surface of the Western Basin reclamation may generate some dust. Mitigation measures for managing this, such as watering roads and stabilising the finished surface will be identified during the EIS phase. A greenhouse gas inventory will also be prepared for the dredging and construction of the reclamation, and the potential for reducing such impacts will be explored.

Dredging and disposal of dredged material can generate turbid plumes that are visible to shipping traffic and to the general public from air, land and water.

Q7. Will the Project make the Port look unattractive?

The construction of the Western Basin reclamation, as an extension to the current Fisherman's Landing reclamation, will substantially alter the visual character of the immediate Fisherman's Landing embayment, but will be consistent with the visual character of the Port as a whole, which contains a number of reclaimed areas.

Q8. What about the effects on the marine flora and fauna?

Dredging and disposal of dredged material may generate of turbid plumes, which can impact on subtidal and intertidal communities through increased sedimentation and reduction of light. While the subtidal and intertidal communities in Port Curtis are tolerant of periodic increases in turbidity associated with freshwater inflows during rainfall and wave and tidal current induced resuspension, additional turbidity and sedimentation resulting from dredging and decant activities has the capacity to present added physiological stressors.

The potential impacts of dredging and onshore disposal of dredged material on marine megafauna such as turtles and dugong and benthic communities will also be explored and mitigation measures identified, if necessary.

Seagrass – the proposed reclamation will involve the removal of the majority of intertidal and subtidal seagrass meadows north of Fisherman's Landing. The EIS will discuss the local and regional significance of this loss to species such as turtles and dugong and to fisheries and will consider potential habitat offsets under relevant Queensland EPA and DPI&F policies.

Q9. How will the Project affect water quality?

The creation of a large reclamation immediately adjacent to or attached to the coastline may have an impact on the depth and flows of groundwater in adjacent areas and also the surface water drainage paths. In turn, this may impact on the fringing mangrove and saltpan communities adjacent to the bud and may also impact on the adjacent terrestrial vegetation through changes to groundwater depths, fluctuations and quality.

The potential impacts of dredging and dredged material disposal are the generation and migration of turbid plumes and the associated sedimentation and light reduction at sensitive habitats such as seagrasses and other intertidal communities. The EIS will summarise the water quality data available in Port Curtis, including data collected during ambient conditions and during recent capital dredging projects at Fisherman's Landing and RG Tanna Coal Terminal.

Deepening and widening of the dredged channels throughout the length to the Port may vary the velocity of tidal currents and alter sedimentation and scour patterns throughout the Port.



Construction of a large reclamation in the Fisherman's Landing area may also reduce the area available for tidal waters to dissipate, leading to some localised changes in water levels. This could have an impact on the distribution of habitats in the Narrows, which is within the

Great Barrier Reef World Heritage Area (but outside Great Barrier Reef Marine Park) and is also within the GBR Coast Marine Park.

Q10. Are there any sensitive habitats in the Port?

The potential for migration of turbid plumes over sensitive habitats and the impacts of onshore dredged material disposal will be investigated in detail in the EIS.

Q11. Will this impact how I can use the Port?

During bund wall construction and dredging some access limitations will be in place in the immediate vicinity of the works. Following completion of the various construction stages the usual port access restrictions around wharves will be in place.

Q12. Will the Project reduce the fish for recreational fishing?

There are a number of known recreational fishing sites within close proximity to the proposed dredge channels, swing basins and dredge disposal area. The extent of the project's impact on recreational fishing sites will be investigated as part of the EIS, which will include direct consultation with local recreational fishing representatives.

Q13. Will the Project increase freight movements in the Port?

Freight movements within the Port will increase. The timing and extent of such increases will be dependent the timing of individual proponents committing to their projects. Shipping movements within the Western Basin could, as a consequence of the LNG industry, commence as early as 2013/14.

Q14. What is the timing of the project?

The dredging of the Western Basin will occur in stages and the rate of development will be controlled by the demands of industry locating in the Gladstone region and requiring access to port facilities.

Timing for the various dredging stages for the Port of Gladstone Western Basin Dredging and Disposal Project are as yet unknown as they are dependent on the approval of projects or requests from new industries for access to berths for import and export of materials. However, some of the LNG proponents currently investigating sites are planning to commence exporting between 2012 and 2014, therefore 2011 is a likely date for dredging for these projects to commence if they proceed within their currently planned timeframes.

Q15. Why do we need the Project?

The Commonwealth and Queensland governments have identified Gladstone as a port with the potential to service future large scale export oriented, resource processing and value adding industries. The close proximity of Gladstone's international port facilities is an essential component of the economic viability of the Gladstone State Development Area (GSDA).



The GDSA is an approximately 28,000 ha declared land bank managed and promoted by the Gladstone Economic and Industry Development Board (GEIDB), a statutory authority under the auspice of the Department of Infrastructure and Planning (DIP) (Figure 1). A Materials Transport Corridor links the GDSA to the Port of Gladstone facilities.

The GDSA aims to attract industries by offering internationally competitive operating costs and has the capacity to accommodate significant future industrial growth. GPC are responsible for the provision of and maintenance of declared depths of shipping channels, swing basins and berth pockets in the Port of Gladstone. The Port of Gladstone Western Basin Dredging and Disposal Project encompasses all the dredging and disposal of dredged material that is currently envisaged in the GPC 50 Year Strategic Plan for the Western Basin (GPC 2008a). The proposed dredging is required to deepen and widen existing channels and swing basins, and to create new channels, swing basins and berth pockets.

Q16. What are the future development plans for the Port?

In July 2008, the Gladstone State Development Area (GSDA) was extended to include an area on the southern end of Curtis Island. The expanded area consists of three areas:

- » The Curtis Island Industry Precinct, which provides for the establishment of liquefied natural gas facilities on the west coast of southern Curtis Island;
- » The Restricted Development Precinct has been applied to the area of Kangaroo Island and is intended to provide for the establishment of essential transportation infrastructure within the GSDA; and
- » The Environmental Management Precinct has been applied to the area east of the range on southern Curtis Island to recognise, protect and maintain areas of high ecological significance (DIP 2008).

In the Curtis Island Industry Precinct, there are currently a number of LNG proponents investigating sites. GPC are also looking to develop up to five berths at Hamilton Point for a range of future imports and exports. DIP is currently consulting with a working group to investigate and provide common user infrastructure to Curtis Island, including a road bridge from Friend Point to Laird Point at the southern end of The Narrows. Dredging and dredged material disposal are required to service the potential LNG and GPC developments on Curtis Island.

The proposed Western Basin reclamation will provide both a dredged material disposal location and will also provide land adjacent to the wharves necessary for efficient loading and unloading of vessels and temporary storage of cargoes and products prior to transport to the GSDA or loading onto ships for export. The proximity of the Materials Transportation Corridor linking the Fisherman's Landing facility to the GSDA and the rail link from Cement Australia to the main North Coast Rail line makes the current Fisherman's Landing and proposed Western Basin development ideal for the transfer of product between the Port and the GSDA and the hinterland of Central Queensland. Wharf 1 to Wharf 5, adjacent to the existing Fisherman's Landing facility, are either in use or committed to proposed industries within the GSDA. The proposed development and subsequent adjacent wharves are required to meet the import/export and storage needs for the variety of industries likely to establish in the GSDA in the long term. The proposed Western Basin reclamation will be designed to provide the best solution to achieve the efficiencies of handling required by industries located within the GSDA.



Q17. What are the benefits of the Project?

The Port of Gladstone Western Basin Dredging and Disposal Project would be staged to meet the requirements of industry. Based on the likely need to expedite the works, GPC proposes to engage a contractor to undertake the expanded bund construction for the Western Basin reclamation. Direct employment is estimated to be 55 person years for the bund construction. Dredging would be staged over a number of years based on the requirements of various proponents. A total of 90 person years is estimated for this phase of the work and it would be performed by contractors. The proposed Port of Gladstone Dredging and Disposal Project will serve to enhance and expand the existing port infrastructure to service planned and as yet unknown industries within Gladstone and the GSDA.

The direct permanent employment resulting from the dredging and Western Basin reclamation will relate to the nature of the product to be handled through the newly created port facilities and as such is not yet quantifiable. Indirect employment will result from the creation of industrial developments remote to the port. These developments would not be viable without ready access to port infrastructure for import or export of product. As such the local, state and national economies will ultimately benefit from the Western Basin Dredging and Disposal Project.

The close proximity of Gladstone's international port facilities is an essential component of the economic viability of the GSDA. The provision of dredged channels, swing basins and berths as identified in the Western Basin Dredging and Disposal Project will provide access to the port facilities, which is a key component of the import and export chain and assists in encouraging industries to develop within the Gladstone region.

Q18. What are the disadvantages of the Project?

GPC envisages that the Western Basin Dredging and Disposal Project will have some detrimental impacts on the existing marine environment and groups, such as recreational and commercial fishers, who use this environment. The EIS process will further investigate all of the project's potential impacts and develop management measures to help avoid or reduce negative impacts where practical.

Q19. What is the Gladstone State Development Area (GSDA)?

The Gladstone State Development Area (GSDA) is a significant industrial land bank located 15 kms to the north west of Gladstone. It was established by the Queensland Government in 1993, following a series of detailed engineering, environmental, social and economic studies in the early 1990s. The purpose of the GSDA is to secure and protect a large area of suitable land with ready access to a deep water port for large scale industrial development over a 30- 50 year timeframe. The GSDA now comprises the Clinton, Yarwun, Aldoga, Targinie and Curtis Island precincts in the Gladstone Regional Council area and totals approximately 28,000 hectares.

Q20. Who is managing the Project?

The EIS for the Western Basin Dredging and Disposal Project is being conducted by GHD on behalf of Gladstone Ports Corporation who is the proponent and responsible for the overall Project Management.



Q21. Who is the Gladstone Ports Corporation?

The Gladstone Ports Corporation is a Government Owned Corporation with shares held equally by the Deputy Premier, Treasurer and Minister for Transport, Trade, Employment and Industrial Relations on behalf of the Queensland Government.

The Corporation manages and operates port facilities and services in the Port of Gladstone and Port Alma, and is unique among Australian port authorities as it not only conducts the functions of a “landlord” port authority, but also owns and operates cargo handling facilities.

Q22. Who is GHD?

GHD is a consulting firm engaged by GPC and the State Government to conduct the EIS, as GPC is required to give due consideration to the likely environmental impacts of the Project under various Commonwealth, State and local legislation, guidelines and policies.

GHD is an international professional services company established in Australia in 1928, and has offices located in a number of countries around the world and regional Australia, including having a local presence in Gladstone.

Q23. What is an Environmental Impact Statement (EIS)?

An Environmental Impact Statement (EIS) is a regulatory requirement set by the Coordinator-General which requires the project Proponent to explore potential environmental, cultural, social and economic impacts likely to be associated with a future development. The EIS process also provides recommendations for possible mitigation measures to manage any adverse impacts identified through the studies undertaken. The information contained in the EIS enables the Coordinator-General to make an informed decision about whether or not the project should proceed to the next stage of development.

The EIS will undertake a social impact assessment, community consultation and an economic impact assessment to quantify the positive and negative impacts of the Project and propose appropriate mitigation measures where required.

Q24. What are the Terms of Reference (TOR) for an EIS?

The Terms of Reference (TOR) for Environmental Impact Statement is set by the Queensland Coordinator-General and provides the guidelines and objectives for obtaining information that must be included in the EIS. This includes information about a proposed project and the Proponent, consultation with local communities and identification of likely impacts, and strategies to appropriately manage these.

Q25. How can I participate in the EIS?

The Gladstone Ports Corporation has appointed consultants GHD to undertake stakeholder consultation activities as part of preparing the EIS. Consultation activities for the local community will include face-to-face meetings with key stakeholders and project information will be made available through information sheets, local newspaper advertisements and on the Gladstone Ports Corporation website.



A 1800 number and email address will be included on all project information, so that interested members of the public can register their interest and provide feedback. Notification about the EIS Public Exhibition Phase will be advertised in *The Observer* and Gladstone Ports Corporation "Port Talk" newsletter.

Q26. What sort of information will GHD be seeking as part of the consultation process?

Consultation as part of the EIS process aims to:

- » Enable key stakeholder involvement and participation in the decision-making process to facilitate outcomes;
- » Provide information to the community and stakeholders about the intent and impacts of the Project, thereby enabling the stakeholders to make more informed decisions about what potential impacts may be associated with a future development;
- » Enable a process whereby the EIS Project Team can receive feedback from the community and stakeholders on issues of interest or concern;
- » Maintain open and transparent communication on all aspects of the project and the environmental impact assessment work;
- » Provide a range of opportunities for stakeholders and the community to identify key issues for consideration in the EIS; and
- » Proactively work with stakeholders and the community to develop recommended strategies that will minimise adverse or negative impacts.

Q27. How can I find out further information about the Project?

Information will be available on the Gladstone Ports Corporation website or the toll free project information line which has been established to answer community and stakeholder enquiries. Email enquiries can also be sent to the GHD Stakeholder Consultation Team.

Project Website: www.gpcl.com.au/current_projects.html

Project Email: westernbasin@ghd.com.au

Project Information Line: 1800 108 807

Q28. So who decides if the Project goes ahead?

Queensland's Coordinator-General (CG) is responsible for assessing the outcomes of the EIS and all public submissions received as part of the EIS process. The CG must be satisfied that any adverse impacts identified in the EIS are minimised and that the benefits to the local community and region are maximised as much as possible. The CG then decides whether or not the project should proceed to the next stage of development.

Q29. If the project receives all necessary approvals, when is development of the project likely to be completed?

Subject to all necessary environmental approvals being received and economic factors being considered, the Project is planned to commence in 2010. Completion of the project will be dependent on the GPC's dredging programme in the local area.



Appendix C

Project Information Sheet and Community Feedback Form



Western Basin Dredging and Disposal Project

The Gladstone Ports Corporation Limited (GPC) has commenced an Environmental Impact Statement (EIS) as part of pre-feasibility studies associated with the future development of the Western Basin, located within the Port of Gladstone.

About the Project

The Western Basin Dredging and Disposal Project seeks to:

- accommodate the long term dredging and dredged material disposal in the Western Basin, and
- provide safe and efficient access to existing and proposed port facilities.

The project will create local employment opportunities, stimulate economic growth and provide ready access to port infrastructure for the import or export of product - vital to the future development of the port.

The development of the Western Basin will incorporate dredging associated with the deepening and widening of existing channels and swing basins, and the creation of new channels, swing basins and berth pockets.

Material dredged during the Western Basin development is proposed to be placed into reclamation areas, creating a land reserve that will service the new port facilities.

The proposed Western Basin reclamation is 10 km north of Gladstone City immediately adjacent to the existing Fisherman's Landing reclamation and proposed 153 ha Fisherman's Landing reclamation (refer to map).

Further information on the project can be found at the Queensland Department of Infrastructure and Planning website: www.dip.qld.gov.au/projects

Timings

- The draft EIS will be subject to a public exhibition period for 20 days in the last quarter of 2009.
- A final decision on the EIS for the Project is expected by the Coordinator General in March 2010.
- Subject to all necessary environmental approvals being received and economic factors being considered, construction of the project could commence in 2010.
- The dredging of the Western Basin will occur in stages and the rate of development will be controlled by the demands of industry locating in the Gladstone region and requiring access to port facilities.

Western Basin Dredging and Disposal Project

Assessment Studies

The EIS will involve a number of technical studies to identify and assess environmental, social and economic impacts of the proposed project, and propose appropriate mitigation or management measures where this is required.

GPC has engaged consultants GHD to conduct EIS assessments for the Western Basin Dredging and Disposal Project.

The information contained in the EIS will enable the Queensland State Government to make an informed decision about whether or not the project should proceed to the next stage of development.

The Government must be satisfied that any adverse impacts identified in the EIS are minimised and that the benefits to the local community and region are maximised as much as possible.

Community Consultation

Public consultation is an important part of the EIS process to gain community input to the EIS studies for the project.

The community is encouraged to participate in the upcoming Community Open Day and provide feedback via the communication channels list below. Feedback received will be considered, assessed and reported in accordance with the Coordinator-General's Terms of Reference for an EIS.

A draft EIS document will also be placed on exhibition, allowing for responses to be lodged by the public. All submissions will be incorporated and responded to in the final EIS.

Details about the project and future consultation activities will be advertised in the *Gladstone Observer* and on the GPC website.

Project Information Line: 1800 108 807

Project Email: westernbasin@ghd.com.au

Project Website: www.gpcl.com.au/current_projects.html





Community Feedback Form

Name: _____

Organisation: _____

Address: _____

Phone/email: _____

What are your key concerns/issues with the proposed project?

General comments/questions:

I would like a representative from the project team to contact me

Please include me on your project information distribution list

Thank you.



Gladstone Ports Corporation
Growth, Prosperity, Community.



The Western Basin Strategic Dredging and Disposal Project

Reply Paid Mail

.....Fold line

Delivery Address:
PO Box 1540
BUDDINA, QLD 4575

No stamp required
if posted in Australia.



GHD
Reply Paid 1540
BUDDINA, QLD 4575

.....Fold line

Wester Basin Strategic Dredging and Disposal Project
Thank you for your feedback



Appendix D
Publication Materials



Gladstone Ports Corporation

Growth, Prosperity, Community.

PUBLIC NOTICE

EIS Open for Public Feedback

The Environmental Impact Statement (EIS) for the Western Basin Strategic Dredging and Disposal Project has commenced.

The project seeks to:

- accommodate the long term dredging and dredged material disposal in the Western Basin
- provide safe and efficient access to the existing and proposed port facilities.

The community is encouraged to provide feedback during the EIS and consultation activities will be held in the coming weeks. These will be advertised in the local media and on the website.

To provide feedback about the EIS or for more information, please contact:

Project Information Line: 1800 108 807 (Toll Free)

Project Email: westernbasin@ghd.com.au

AN INVITATION TO THE GLADSTONE PORTS CORPORATION

COMMUNITY OPEN DAY: Western Basin Strategic Dredging and Disposal Project

The Gladstone Ports Corporation (GPC) has commenced an Environmental Impact Statement (EIS) for the Western Basin Strategic Dredging and Disposal Project.

The project seeks to accommodate the long term dredging and dredged material disposal in the Western Basin and provide safe and efficient access to the existing and proposed port facilities.

GPC is committed to an open two-way communication process and invites you to attend the upcoming Community Open Day:
Wednesday 1 July 2009, 2.00pm – 6.30pm. Gladstone Entertainment Centre (foyer area), 58 Goondoon St. Gladstone

The Community Information Session will provide relevant project information and seek feedback and comments about potential impacts that may be associated with a future development of the project. For more information or to register your desire to be involved, please contact:

Project Information Line: 1800 108 807 Project Email: westernbasin@ghd.com.au

Project Website: www.gpcl.com.au/current_projects.html



Gladstone Ports Corporation
Growth, Prosperity, Community.

Annie's leadership goals a step closer

GPC is once again promoting the development of female leaders through its annual women's leadership program, with Information Systems Analyst Programmer Annie Rich selected to participate in 2009.



Annie has a long history with GPC, having begun seven and a half years ago as a vacation student while she was in the second year of her Information Technology degree. GPC then funded Annie's final year and later also provided the financial support so she could complete a Masters in Information Systems.

Now, Annie is involved in numerous system developments and applications, including the development of GPC's management reporting systems for capital works, quarry haulage and other financial reports. Currently, Annie is working with Queensland Rail on information and control systems to improve efficiencies with train unloading by automating train notifications and cargo tracking.

LEFT: Annie Rich looks forward to developing her leadership skills.

Aspiring towards management roles in the future, Annie will undertake a five day New Manager Program at the University of New South Wales' Australian Graduate School of Management in June.

The program is aimed at building the foundations for a successful career in management by identifying strengths and opportunities for personal growth, enhancing the student's personal impact and increasing assertiveness.

To further enhance the program Annie will also be offered a secondment or project to apply her newly acquired skills when she returns, and will be coached and mentored through the process.

EIS for Western Basin Strategic Dredging and Disposal Project underway

The EIS for the Western Basin Strategic Dredging and Disposal Project has commenced.

The EIS for the Western Basin Strategic Dredging and Disposal Project has commenced.

The Port of Gladstone project seeks to accommodate the long term dredging and dredged material disposal that is required to provide safe and efficient access to the existing and proposed port facilities in the harbour over the foreseeable future.

The Western Basin Strategic Dredging and Disposal Project will create local employment opportunities, stimulate economic

growth and provide ready access to port infrastructure for the import or export of product - vital to the future development of the port.

The EIS will involve a number of technical studies to identify and assess environmental, social and economic impacts of the proposed project, and propose appropriate mitigation or management measures where this is required.

Community consultation will also be conducted to gain input to the EIS studies. Community members are encouraged to provide feedback

during the EIS and consultation activities will be held with key stakeholders in the coming weeks. Project information will be made available through information sheets, local newspaper advertisements and on the website.

To provide feedback about the EIS or for more information, please contact:

Project Email:
westernbasin@ghd.com.au

Project Information Line:
1800 108 807 (Toll Free)

Want to know more about career opportunities at GPC?

Head along to the Gladstone Career & Tertiary Expo on Friday 24 and Saturday 25 July for a chance to speak to GPC employees representing a range of departments at the port. The expo will be held at Gladstone State High School from 9am-4pm on Friday and 10am-2pm on Saturday.



Appendix E
Project Presentation



CLIENTS | PEOPLE | PERFORMANCE



Gladstone Ports Corporation
Growth, Prosperity, Community.

Western Basin Dredging and Disposal Project



Gladstone Ports Corporation
Growth, Prosperity, Community.



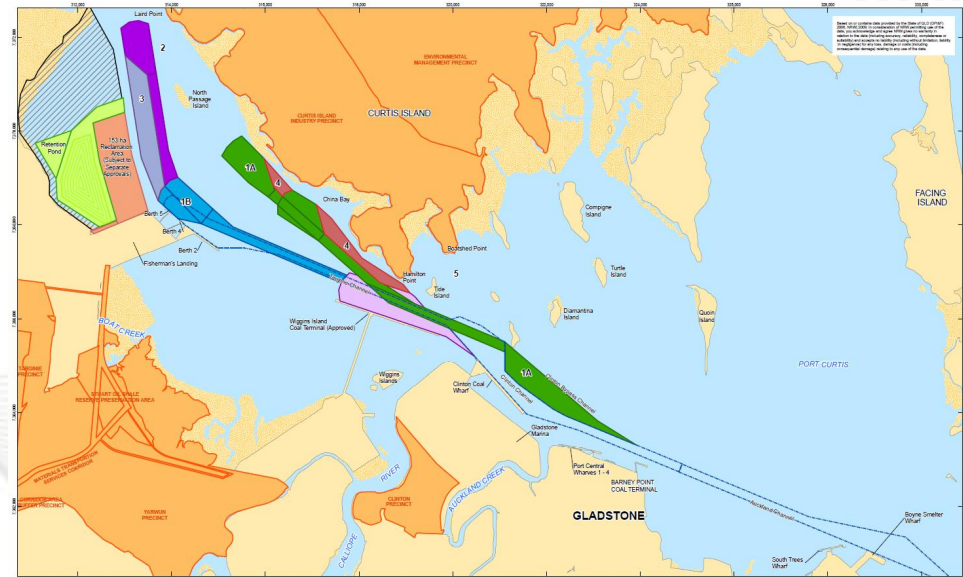
CLIENTS | PEOPLE | PERFORMANCE



Gladstone Ports Corporation
Growth. Prosperity. Community.

Presentation Overview

- Introduction to Project
- Approvals Status
- Environmental Context
- Environmental Studies
- Consultation
- Summary/Discussion





CLIENTS | PEOPLE | PERFORMANCE



Gladstone Ports Corporation
Growth, Prosperity, Community.

Project Context

- Rapid expansion of LNG proponents investigating sites in Gladstone
- Multiple proponents, various approvals processes underway
- Need for coordinated approach and assessment of cumulative impacts of multiple dredging projects, including disposal options





Project Overview

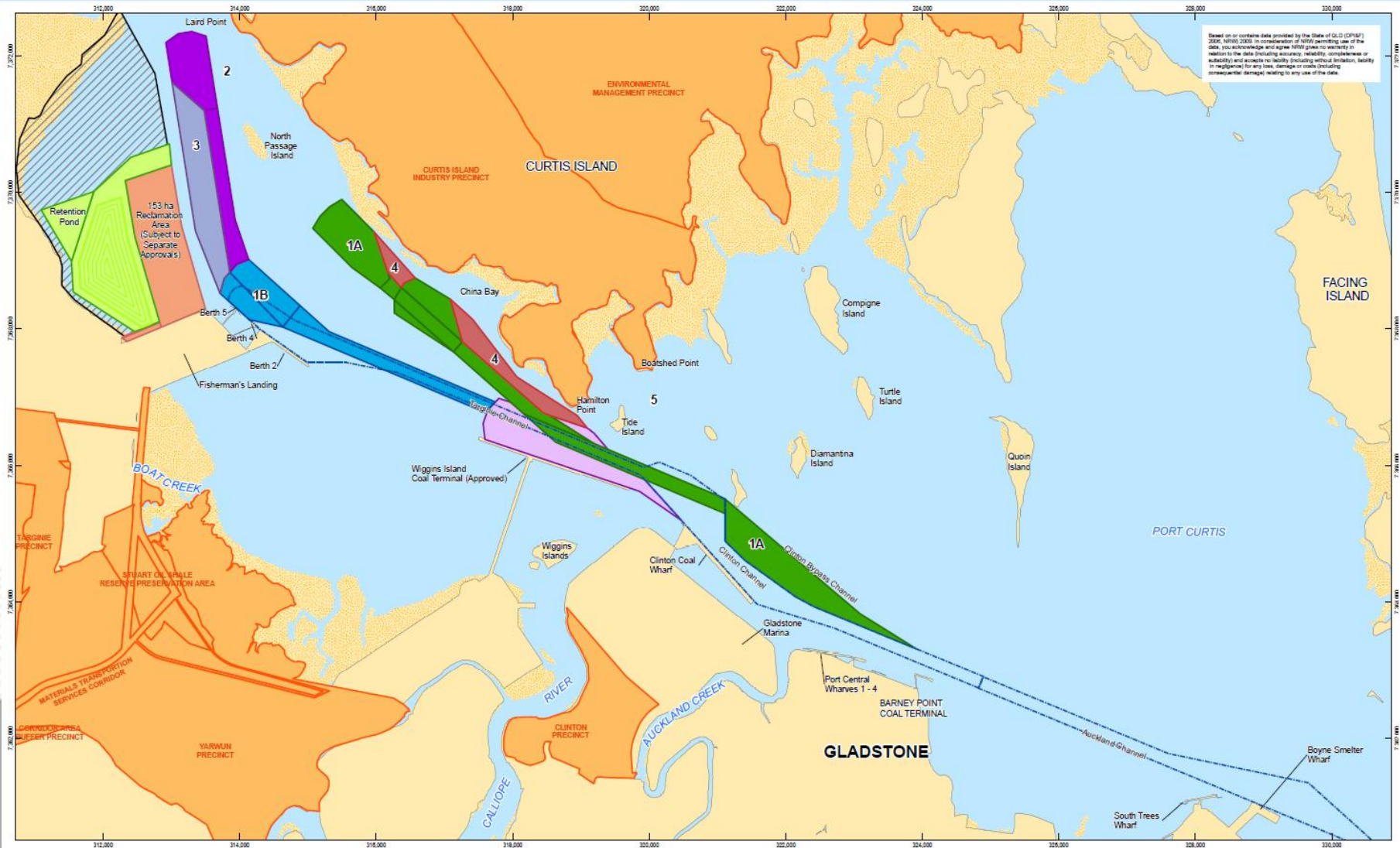
- Encompasses all dredging envisaged for GPC and LNG industry development
- Also addresses disposal into proposed reclamation area
- Dredging proposed in Stages depending on industry requirements:
 - Stage 1A – LNG on Curtis Island
 - Stage 1B – LNG Ltd at Fisherman's Landing reclamation
 - Stage 2 – Laird Point LNG site
 - Stage 3 – Fisherman's Landing Wharves
 - Stage 4 – Hamilton Point – long term port development
- Note: EIS progressing for 153ha reclamation
- This will be required by GPC for maintenance and minor capital material disposal regardless of LNG industry



CLIENTS | PEOPLE | PERFORMANCE



Gladstone Ports Corporation
Growth. Prosperity. Community.





CLIENTS | PEOPLE | PERFORMANCE



Gladstone Ports Corporation
Growth, Prosperity, Community.

Approvals Status

- EPBC referral submitted 20 May, controlled action declared 18 June
- Declared a Significant Project Declaration under SDPWO Act
- Project to be assessed under Bilateral Agreement
- Initial Advice Statement on DIP website
- Draft Terms of Reference being prepared by DIP/GHD – to be advertised for comment from 11 July to 10 August



Environmental Context

- Protected Areas:
 - Inside GBRWHA, outside GBRMP
 - Dugong Protection Area
 - State Marine Park
 - Fish Habitat Area
- Substantial seagrass beds
 - Key beds monitored annually by DPI&F since 2002
 - Variability seen
- Dugong, turtles, dolphins present in harbour
- Water quality impacts during dredging and decant of disposal area
- Sediment quality
 - Historically - no substantial contamination



CLIENTS | PEOPLE | PERFORMANCE



Gladstone Ports Corporation
Growth, Prosperity, Community.

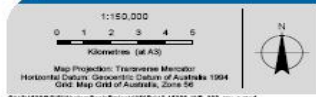
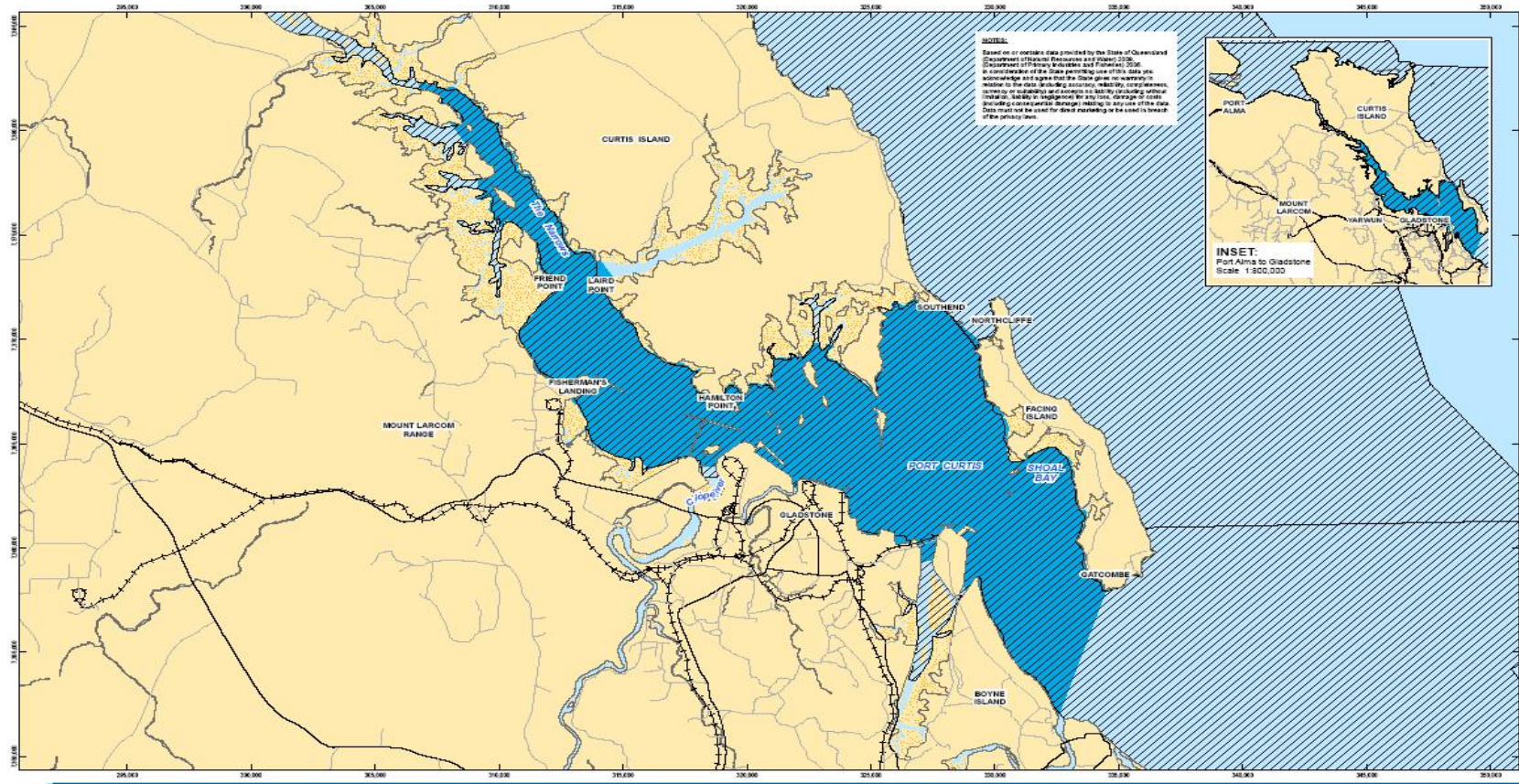
Environmental Studies – Marine Ecology

- Boat based surveys at 90 sites
- Assessment of seagrass, algae, benthic macroinvertebrate communities
- Boat based and aerial surveys for marine megafauna
 - 3 surveys over 6 months





Environmental Studies – Marine Fauna



LEGEND	
	Major Road
	Minor Road
	Railway
	Coastal Wetland
	Aerial based Megafauna Sample Area
	Boat based Megafauna Sample Area



Gladstone Ports Corporation
Western Basin EIS:
Marine Ecology & Megafauna
Aerial and Boat based
Megafauna Sampling

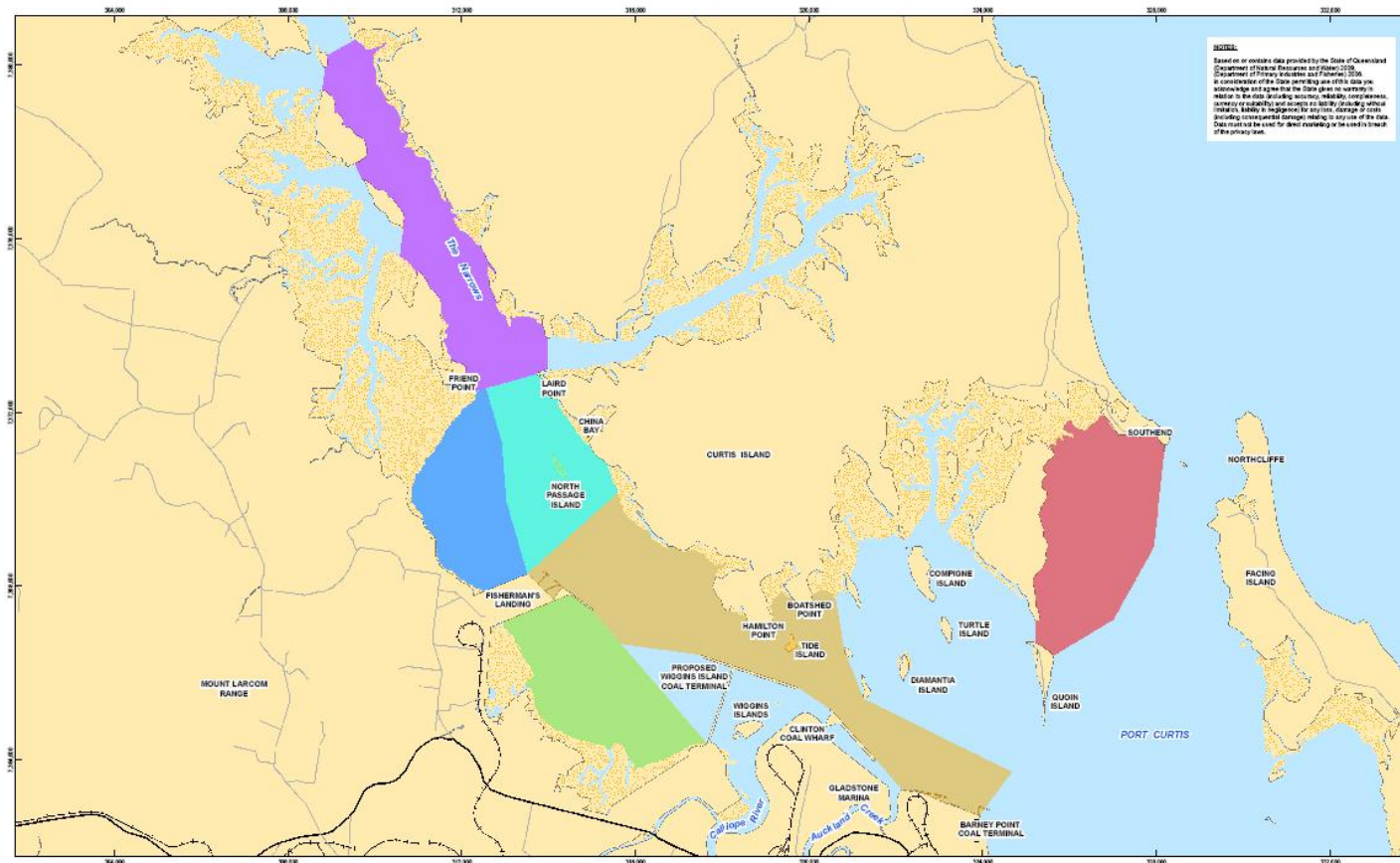
Job Number: 42-15386-4D
Revision: A
Date: 16 MAY 2005

Figure 5

04/15/2005 09:00:00 User: gpc\jmc\04-15386_A05_102_rev_A.mxd
© 2005, TMW, GPC and other users to whom the accuracy of this product is warranted. The Department of Primary Industries and Fisheries (DPI&F) and Queensland Australia (QA) make no representations or warranties about its accuracy, completeness or suitability for any particular purpose. GHD, TMW, DPI&F and QA cannot accept liability of any kind (whether in contract, tort or otherwise) for any damages, losses, expenses or other costs (including indirect or consequential damages) which are or may be incurred as a result of the product being inaccurate, incomplete or unusable in any way or for any reason.
Data Sources: NSW (DCEP - Gladstone - February 2005), DPI&F (Coastal Wetland - December 2005), QA (DMA Topo Data, Roads, Rail, Place Names - 2005), GHD (Storage Area - May 2006). Created by: M20



Environmental Studies – Marine Ecology



NOTES:
 Based on or contains data provided by the State of Queensland Department of Natural Resources and Water (2006), Department of Primary Industries and Fisheries (2006) in consultation with State sampling use of the data and acknowledge that the State does not warrant in relation to the data including accuracy, reliability, completeness, currency or suitability and accepts no liability (including without limitation) arising in negligence for any loss, damage or costs (including consequential damage) relating to any use of the data. Data must not be used for direct marketing or be used in breach of the privacy law.

1:80,000

0 1 2 3 4

Kilometres (of A.S.)

Map Projection: Transverse Mercator
 Horizontal Datum: Geocentric Datum of Australia 1984
 GDA Map Grid of Australia, Zone 56

© 2006. Where GHD has been used to ensure the accuracy of this product, GHD Pty Ltd, The Department of Natural Resources and Water (NRW), The Department of Primary Industries and Fisheries (DPI&F) and Geoscience Australia (GA) make no representations or warranties about its accuracy, completeness or suitability for any particular purpose. GHD, NRW, DPI&F and GA accept no liability for any expenses, losses, damages and/or costs (including without limitation) or consequential damage which may or may not be incurred as a result of the product being inaccurate, incomplete or unreliable in any way and for any reason.
 Data Sources: NRW (ECCS) - February 2009; DPI&F (Coastal Wetlands) - December 2005; GA (DPA Top Data, Trade, Tidal Flow Names) - 2006; GHD (Sample Areas) - May 2009. Created by: NCE

LEGEND

Major Road	Sample Area	Passage Islands
Minor Road	Channel	Reference
Railway	Fisherman's Landing	Western Basin
Coastal Wetland	The Narrows	

Gladstone Ports Corporation
Western Basin EIS:
Marine Ecology & Megafauna

Marine Ecology Sample Areas

2 | 100 Goodwood Street Gladstone QLD 4680 Australia T 61 7 4972 6377 F 61 7 4972 6236 E gpm@glpc.com.au W www.glpc.com.au

Job Number: 42-15386-40
 Revision: A
 Date: 14 MAY 2009

Figure 4



Environmental Studies – Water Quality

- 4 sedentary loggers deployed in April 2009
- Every 10 minutes loggers record:
 - Turbidity
 - Deposition
 - PAR
 - Water pressure
- Loggers downloaded & maintained monthly
- Vessel-based monitoring occurs at monthly maintenance event
 - Physicochemical
 - Water samples for lab analysis (TSS, Chl *a*, Total N, Total P, metals)





CLIENTS | PEOPLE | PERFORMANCE



Gladstone Ports Corporation
Growth. Prosperity. Community.





Environmental Studies – Terrestrial Ecology

- Flora
 - Ground truthing of vegetation mapping
 - Targeted and meandering surveys for flora listed under NCA or EPBC
 - Vegetation condition assessment
- Fauna
 - Terrestrial fauna and freshwater aquatic fauna
 - Systematic sampling to identify presence, distribution and abundance of amphibians, birds, reptiles and mammals
 - Habitat assessment
 - Migratory and wader bird assessment



CLIENTS | PEOPLE | PERFORMANCE



Gladstone Ports Corporation
Growth. Prosperity. Community.

Environmental Studies – Hydrogeology

- Bore census
- Drilling
 - 6 monitoring bores at 4 locations
 - Installation of 3 data loggers
 - Monthly monitoring
- Conceptual hydrogeological model of Western Basin area
- Assessment of geochemistry and water level fluctuations





Other Studies

- Sediment sampling
- Hydrodynamic and water quality modelling
- Hydrology
- Cultural Heritage
- Air and Noise
- Socio-economic Assessment

Workforce/Transport

- Workforce – approximately 30 people – little transport impact on traffic numbers
- Quarry for bund wall material located behind former Ticor site
- Haul route to Fisherman's Landing will be predominantly off road – route options study being undertaken
- Off road haul trucks to build bund; fines scalped to reduce turbidity



Project Scheduling

- Draft EIS scheduled for completion in October
- Baseline surveys almost completed

Consultation

- Ongoing liaison and consultation with agencies
- Ongoing consultation with GPC Environment Working Group
- Meetings with key stakeholders (e.g. fishing groups)
- Gladstone Regional Council briefings
- Consultation with general community
 - Article in Port Talk (GPC newsletter)
 - 1800 number, email and website
- Open Day held last Wednesday
- Consultation with Traditional Owners ongoing



CLIENTS | PEOPLE | PERFORMANCE



Gladstone Ports Corporation
Growth, Prosperity, Community.



Gladstone Ports Corporation
Growth, Prosperity, Community.



CLIENTS | PEOPLE | PERFORMANCE





GHD

201 Charlotte Street Brisbane QLD 4000
GPO Box 668 Brisbane QLD 4001
T: (07) 3316 3000 F: (07) 3316 3333 E: bnemail@ghd.com.au

© GHD 2009

This document is and shall remain the property of GHD. The document may only be used for the purpose for which it was commissioned and in accordance with the Terms of Engagement for the commission. Unauthorised use of this document in any form whatsoever is prohibited.

Document Status

Rev No.	Author	Reviewer		Approved for Issue		
		Name	Signature	Name	Signature	Date
0	L Sewell S Wood K Smith	N Turner		J Lee		1/10/09