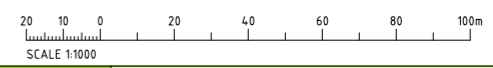
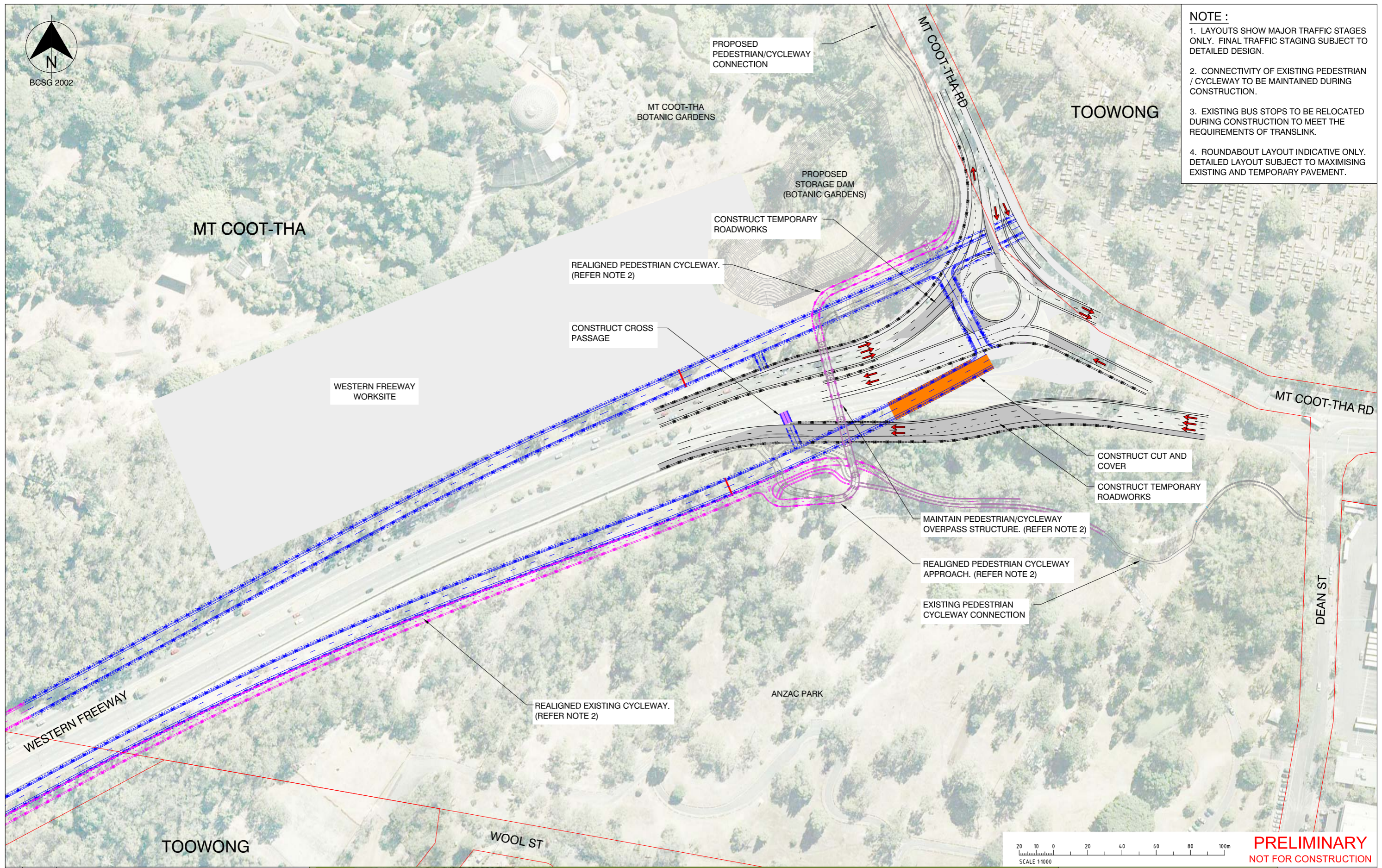




- NOTE :**
1. LAYOUTS SHOW MAJOR TRAFFIC STAGES ONLY. FINAL TRAFFIC STAGING SUBJECT TO DETAILED DESIGN.
 2. CONNECTIVITY OF EXISTING PEDESTRIAN / CYCLEWAY TO BE MAINTAINED DURING CONSTRUCTION.
 3. EXISTING BUS STOPS TO BE RELOCATED DURING CONSTRUCTION TO MEET THE REQUIREMENTS OF TRANSLINK.
 4. ROUNDABOUT LAYOUT INDICATIVE ONLY. DETAILED LAYOUT SUBJECT TO MAXIMISING EXISTING AND TEMPORARY PAVEMENT.



PRELIMINARY
NOT FOR CONSTRUCTION

Rev.	Date	Revision Details
B	May 09	Removal of Toowong and Kelvin Grove Connections
A	Sept 08	EIS Reference Project Design



PROJECT DESIGN
Northern Link
Traffic Management and Staging
Western Freeway Connection
(Stage 3 of 4)

Project No.	24531
Scale	1:2000 at A3 1:1000 at A1
Sketch No.	Rev.
EIS-TM-03	B

