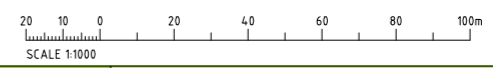
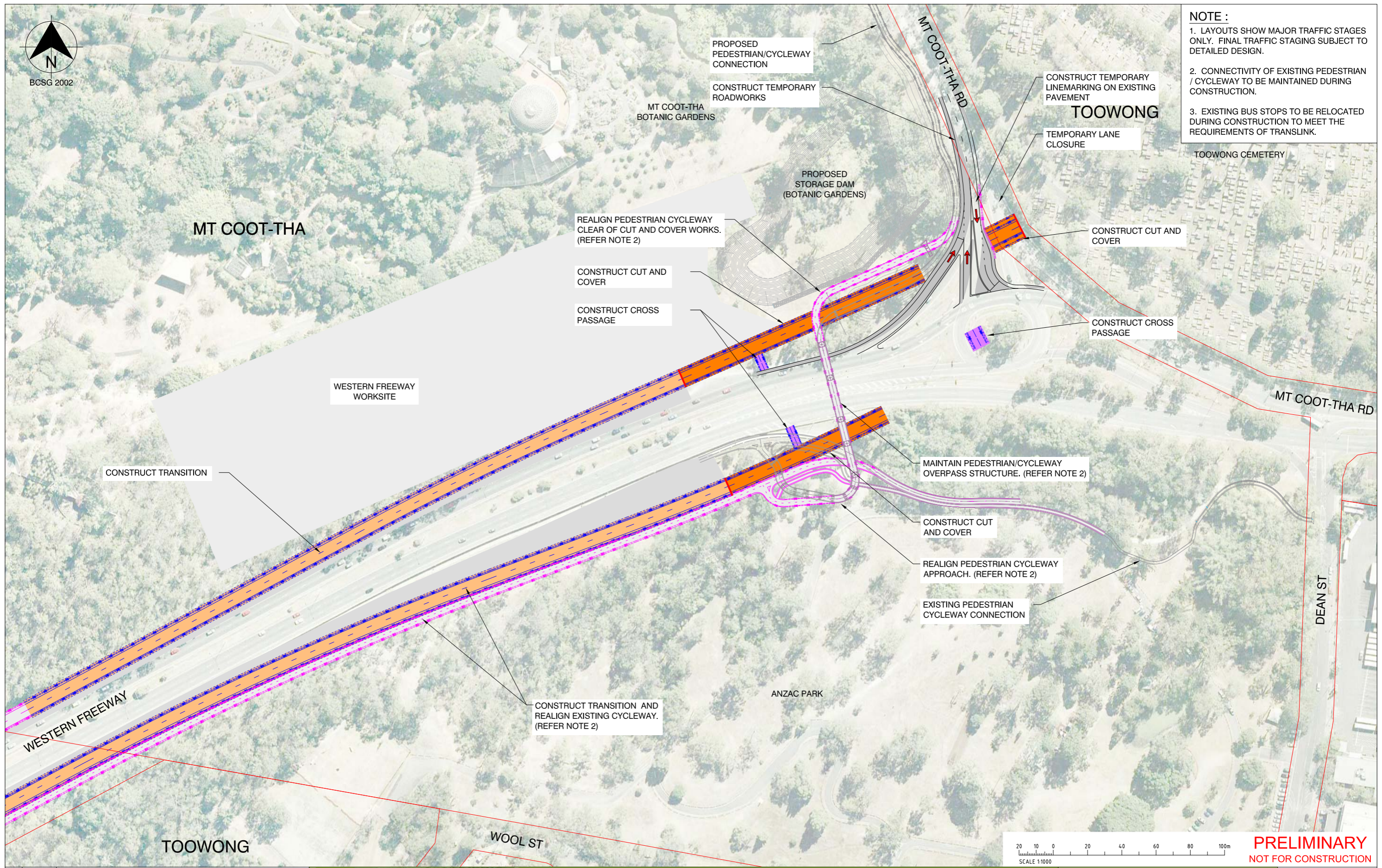




NOTE :

- LAYOUTS SHOW MAJOR TRAFFIC STAGES ONLY. FINAL TRAFFIC STAGING SUBJECT TO DETAILED DESIGN.
- CONNECTIVITY OF EXISTING PEDESTRIAN / CYCLEWAY TO BE MAINTAINED DURING CONSTRUCTION.
- EXISTING BUS STOPS TO BE RELOCATED DURING CONSTRUCTION TO MEET THE REQUIREMENTS OF TRANS LINK.



PRELIMINARY
NOT FOR CONSTRUCTION

Rev.	Date	Revision Details
B	May 09	Removal of Toowong and Kelvin Grove Connections
A	Sept 08	EIS Reference Project Design



northern link

SKM Connell Wagner
JOINT VENTURE



PROJECT DESIGN
Northern Link
Traffic Management and Staging
Western Freeway Connection
(Stage 1 of 4)

Project No.	24531
Scale	1:2000 at A3 1:1000 at A1
Sketch No.	EIS-TM-01
Rev.	B

