

APPENDIX

C

Design Drawings

GOWRIE TO HELIDON ENVIRONMENTAL IMPACT STATEMENT



Contents

The drawings provided in Appendix C: Design Drawings are based on the current Gowrie to Helidon (G2H) Project (the Project) reference design used as the basis for the Environmental Impact Statement (EIS).

The drawing sheets provide additional information coverage of the Project, as described in the EIS.

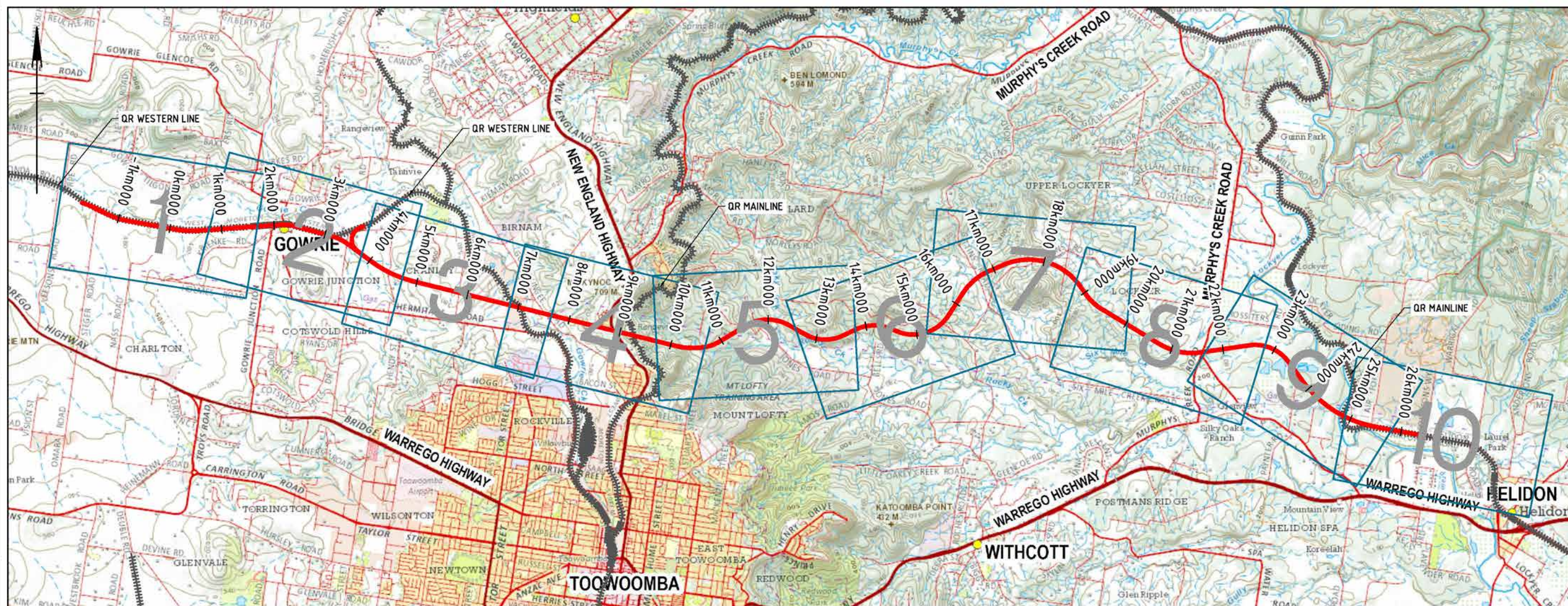
The design drawings included are:

- ▶ Locality plan—1 sheet
- ▶ Legend—1 sheet
- ▶ Drawing Set A Rail civil plan and profile—11 sheets
- ▶ Drawing Set B Environmental design matters drawing index and legend—1 sheet
- ▶ Drawing Set C Environmental design matters—10 sheet
- ▶ Drawing Set D Toowoomba Tunnel Western Portal general arrangement plan—1 sheet
- ▶ Drawing Set E Toowoomba Tunnel Intermediate ventilation shaft general arrangement plan—1 sheet
- ▶ Drawing Set F Toowoomba Tunnel Eastern Portal general arrangement plan—1 sheet
- ▶ Drawing Set G Toowoomba Tunnel Spaceproofing TBM tunnel, typical cross section—1 sheet
- ▶ Drawing Set H Toowoomba Tunnel Spaceproofing mined tunnel, typical cross section—1 sheet
- ▶ Drawing Set I Toowoomba Tunnel utilities and drainage, drainage schematic—1 sheet
- ▶ Drawing Set J Standard fauna exclusions fence details—2 sheets
- ▶ Drawing Set K Standard chain link boundary fence—1 sheet

These drawings support the Project EIS chapters and appendices and are not to be used for: tenure matters, corridor gazettal, boundary adjustments, property acquisition and/or land-based offset delivery considerations. The provided drawings are not for construction.

The Project will be subject to review, revision and refinement during future phases.

ARTC - INLAND RAIL GOWRIE TO HELIDON RAIL CIVIL



© 2018 Australian Rail Track Corporation Ltd.
Drawing standard in accordance with EGP-04-01 & EGP-04-02

Used on / Next higher assembly:

Scale

Filename:
2-0001-320-CAL-10-DR-0001.dwg

Alternate DMS number:

Rev	Date	Revision Description
0	02/06/20	ISSUED FOR FEASIBILITY DESIGN

Designed	Checked	Ind. Rev	Approved	Accepted
R.P.	L.S.	D.S.	L.K.	

Designing Company

Design Project Code

Designed R. DU PLOOY 02/06/20

Checked L. SPINDLER 02/06/20

Ind. Rev. Company AECOM

Ind. Rev. Name D. STEFFENS

Signature D. Steffens 02/06/20

Future Freight

Approved By

L. Klein

Signature

ARTC ACCEPTANCE

Accepted By

Signed

Acceptance Date



0 1 of 1
2-0001-320-CAL-10-DR-0001
Scale:

TITLE
GOWRIE TO HELIDON
RAIL CIVIL - COVER SHEET AND LOCALITY PLAN

SHEET
SIZE
A1

Last Modified - Tuesday, Jun 02, 2020 4:01:05 PM

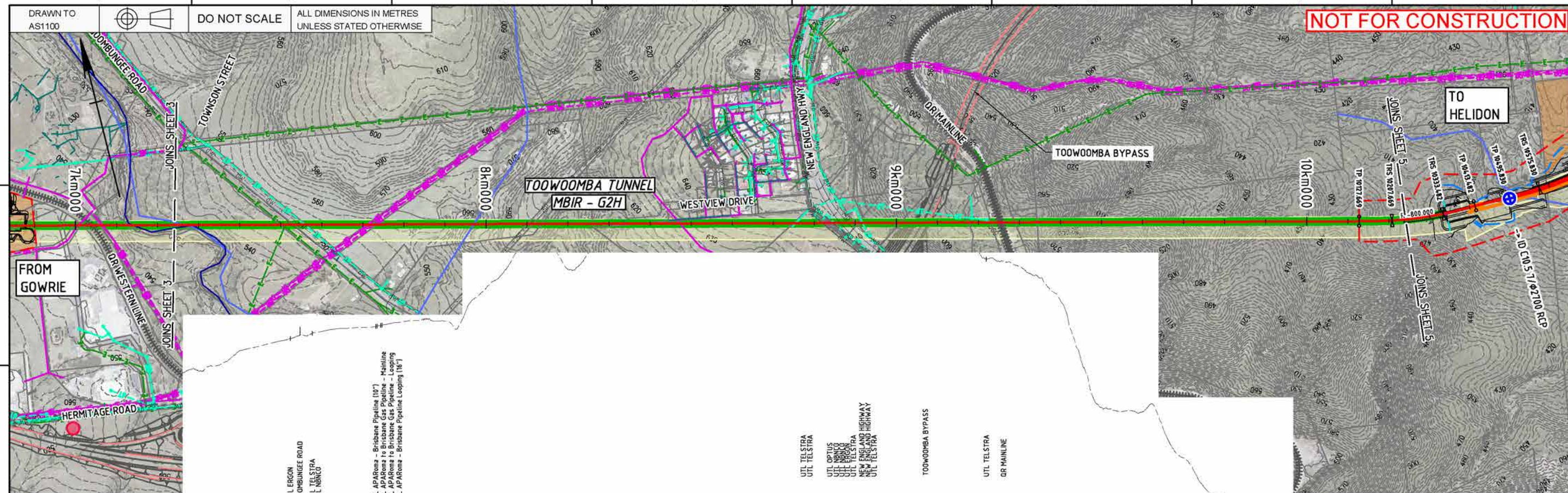
DRAWN TO AS1100		DO NOT SCALE		ALL DIMENSIONS IN METRES UNLESS STATED OTHERWISE		NOT FOR CONSTRUCTION		
CIVIL RAIL - EXISTING								
A		EXISTING RAIL LINE			DESIGN RAIL MAINTENANCE ACCESS ROAD - SURFACE LEVEL			EXISTING DBYD OIL LINE - UNDERGROUND
		EXISTING PROPERTY BOUNDARY			DESIGN RAIL MAINTENANCE ACCESS ROAD - TURN-AROUND			EXISTING DBYD SEWER - UNDERGROUND
		EXISTING CONTOUR MAJOR (10M INTERVAL)			INDICATIVE DESIGN RAIL MAINTENANCE ACCESS POINT			EXISTING DBYD TELSTRA - UNDERGROUND
		EXISTING CONTOUR MINOR (2.5M INTERVAL)			DESIGN EARTHWORKS			EXISTING DBYD WATER - UNDERGROUND
		SURVEY POINT			DESIGN ROAD			EXISTING SURVEYED WATER MAIN - UNDEGROUND
B		SHIRE BOUNDARY			DESIGN RAIL BRIDGE			EXISTING DBYD FUEL - UNDERGROUND
					DESIGN ROAD BRIDGE			EXISTING STORMWATER - UNDERGROUND
					DESIGN RAIL TUNNEL			UTILITIES CLASH POINT
							ENVIRONMENTAL OVERLAYS	
								MINING LEASE
C	CIVIL RAIL - DESIGN							TEMPORARY DISTURBANCE FOOTPRINT
		DESIGN RAIL CONTROL LINE						PERMANENT DISTURBANCE FOOTPRINT
		EXISTING CORRIDOR BOUNDARY						EXISTING WATERCOURSE (10M INTERVAL)
		PROPOSED RAIL CORRIDOR BOUNDARY						DATA SOURCE: DNRM (WATERCOURSE IDENTIFICATION MAP)
		PROPOSED ROAD CORRIDOR BOUNDARY						QUEENSLAND STATE HERITAGE REGISTER
D		EXISTING ROAD CORRIDOR BOUNDARY						QUEENSLAND LOCAL HERITAGE REGISTER
		GOWRIE TO GRANDCHESTER STRATEGIC CORRIDOR						QUEENSLAND CULTURAL HERITAGE INFORMATION MANAGEMENT SYSTEM
		KILOMETRAGE 100M INTERVAL						QUEENSLAND ABORIGINAL HERITAGE SITES
		KILOMETRAGE 1000M INTERVAL						
		KILOMETRAGE ADJUSTMENT						
E		TANGENT POINT						
		TRANSITION POINT						
		CLEARANCE POINT						
		TURNOUT TOE OF SWITCH						
		ADJOINING PROJECT CONTROL LINE						
F		ARTC STUDY BOUNDARY						
		DESIGN CATCH DRAIN / CATCH BANK						
		DESIGN BATTER CHUTES						
		DESIGN RAIL MAINTENANCE ACCESS ROAD - FORMATION LEVEL						



DRAWINGS

Drawing Set A Rail civil plan and profile

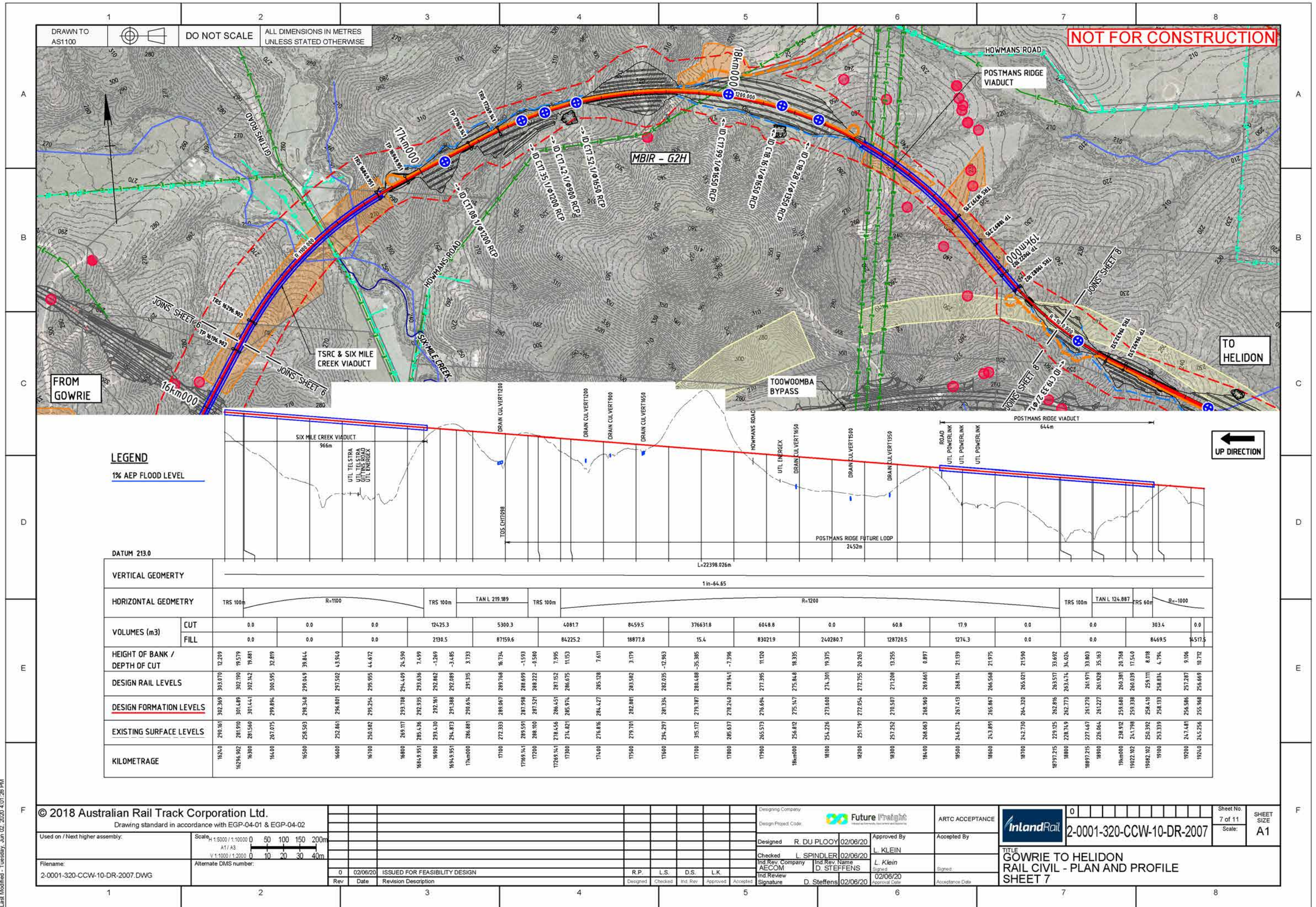
GOWRIE TO HELIDON ENVIRONMENTAL IMPACT STATEMENT

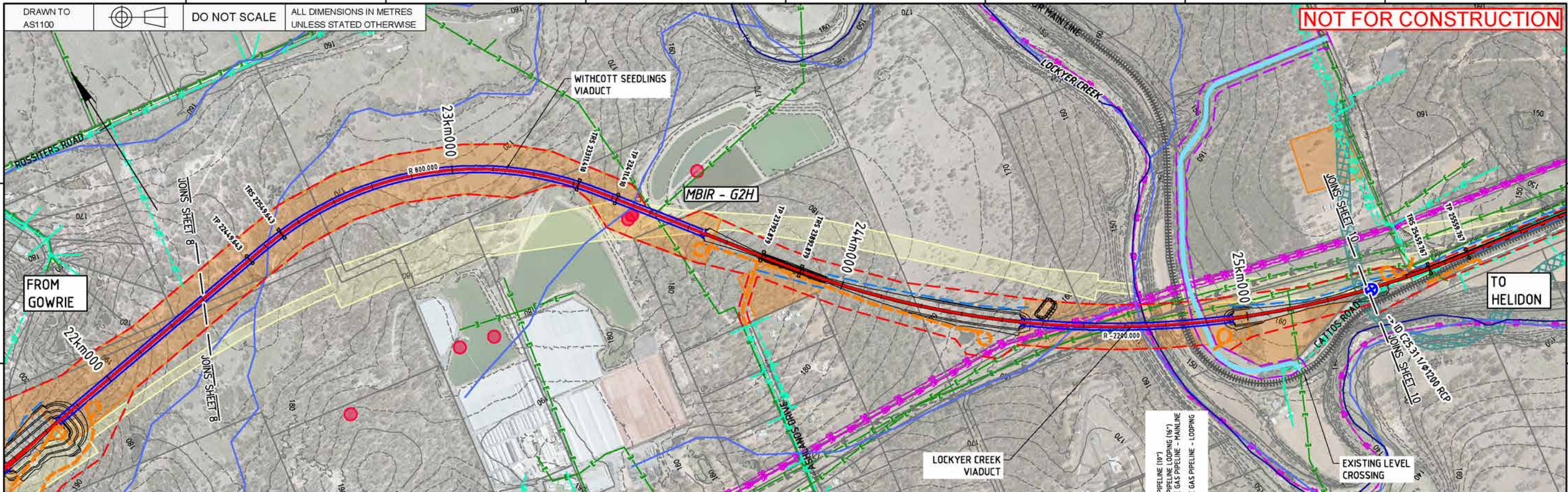


[illegible]

© 2018 Australian Rail Track Corporation Ltd. Drawing standard in accordance with EGP-04-01 & EGP-04-02												Designing Company Future Freight Design Project Code:		ARTC ACCEPTANCE		 <div> <div>0</div> <div>2-0001-320-CCW-10-DR-2004</div> <div>4 of 11</div> </div>		<div> <div>Sheet No.</div> <div>4 of 11</div> </div> <div> <div>SHEET SIZE</div> <div>A1</div> </div>	
Used on / Next higher assembly:	Scale: $H: 1:5000 / 1:10000$ $A1 / A3$ $V: 1:1000 / 1:2000$ 											Designed R. DU PLOOY 02/06/20		Approved By L. KLEIN		Accepted By			
Filename: 2-0001-320-CCW-10-DR-2004.DWG	Alternate DMS number:											Checked L. SPINDLER 02/06/20 Ind. Rev. Company AECOM		Ind. Rev. Name D. STEFFENS Ind. Rev. Date 02/06/20		Signed: 02/06/20		Signed:	
												R.P.		L.S.		D.S.		L.K.	
												0		02/06/20		ISSUED FOR FEASIBILITY DESIGN			
												Rev		Date		Revision Description			
												Designed		Checked		Ind. Rev.		Approved	
												Ind. Review Signature		D. Steffens		02/06/20		Acceptance Date	

Last Modified - Tuesday, Jun 02, 2020 4:01:28 PM





LEGEND

1% AEP FLOOD LEVEL

DATUM 130.0

VERTICAL GEOMETRY

HORIZONTAL GEOMETRY

VOLUMES (m3)	CUT	FILL																
			0.0	0.0	0.0	0.0	0.0	0.0	0.0	7.1	991.6	0.0	0.0	0.0	0.0	0.0	0.0	0.0
HEIGHT OF BANK / DEPTH OF CUT	35.221	35.755	36.165	36.594	36.550	36.181	34.847	31.713	31.262	29.694	25.278	18.141	15.956	16.085	20.540	21.152	16.024	9.557
DESIGN RAIL LEVELS	210.267	209.339	207.025	206.324	206.246	205.478	204.699	202.451	201.606	198.512	196.966	195.419	193.872	193.696	192.325	192.149	190.779	189.232
DESIGN FORMATION LEVELS	209.566	208.638	207.092	206.324	205.545	204.777	203.998	202.451	201.606	198.512	196.966	195.419	193.872	193.696	192.325	192.149	190.779	189.232
EXISTING SURFACE LEVELS	174.345	172.883	170.926	169.819	168.995	168.596	168.151	170.738	169.642	167.893	170.987	176.577	177.215	176.910	171.084	170.296	174.054	178.974
KILOMETRAGE	2224.0	22300	22400	22449.643	22500	22549.643	22600	22700	22800	22900	23000	23100	23200	23300	23311.41	23400	23500	23600

© 2018 Australian Rail Track Corporation Ltd.

Drawing standard in accordance with EGP-04-01 & EGP-04-02

Used on / Next higher assembly:

Scale: 1:5000 / 1:10000
A1 / A3
V.1:10000 / 1:20000

Filename:
2-0001-320-CCW-10-DR-2009.dwg

Alternate DMS number:

0.1 14/01/21 EIS AMENDMENT: DISTURBANCE FOOTPRINT UPDATED
0 02/06/20 ISSUED FOR FEASIBILITY DESIGN

Rev Date Revision Description

R.P. L.S. D.S. L.K.
R.P. L.S. D.S. L.K.

Designed Checked Ind. Rev. Approved Accepted

Designing Company:

Design Project Code:

Designed R. DU PLOOY 02/06/20

Checked L. SPINDLER 02/06/20
Ind. Rev. Company AECOM
Ind. Rev. Name D. STEFFENS
Ind. Review Signature D. Steffens 02/06/20

Approved By L. Klein
Signed
Approved Date 02/06/20

ARTC ACCEPTANCE

Accepted By

Signed

Acceptance Date

InlandRail

2-0001-320-CCW-10-DR-2009

TITLE
GOWRIE TO HELIDON
RAIL CIVIL - PLAN AND PROFILE
SHEET 9

Sheet No.

9 of 11

Scale:

SHEET SIZE

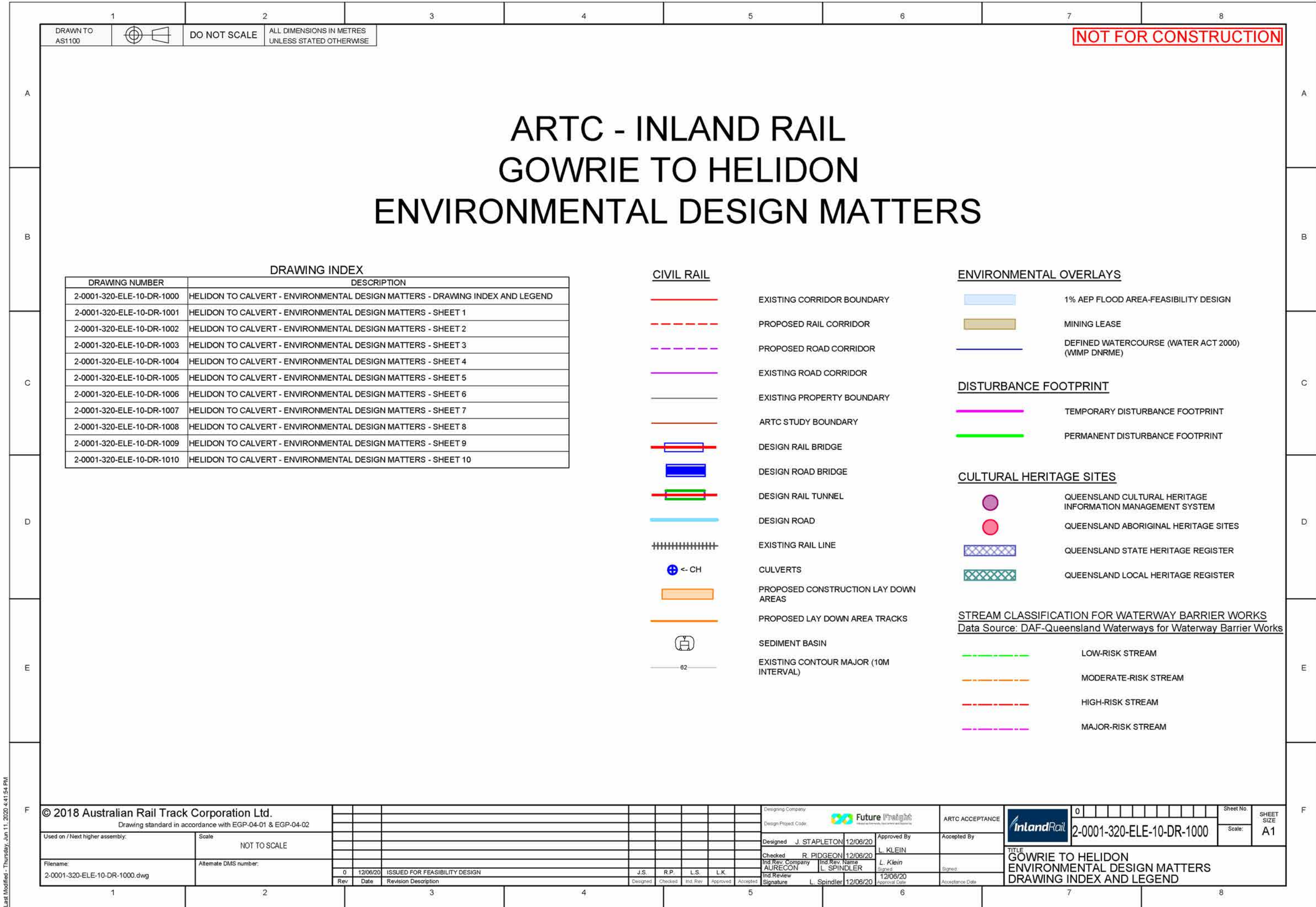
A1

DRAWINGS

Drawing Set B Environmental design matters drawing index and legend

GOWRIE TO HELIDON ENVIRONMENTAL IMPACT STATEMENT





Last Modified - Thursday, Jun 11, 2020 4:41:54 PM

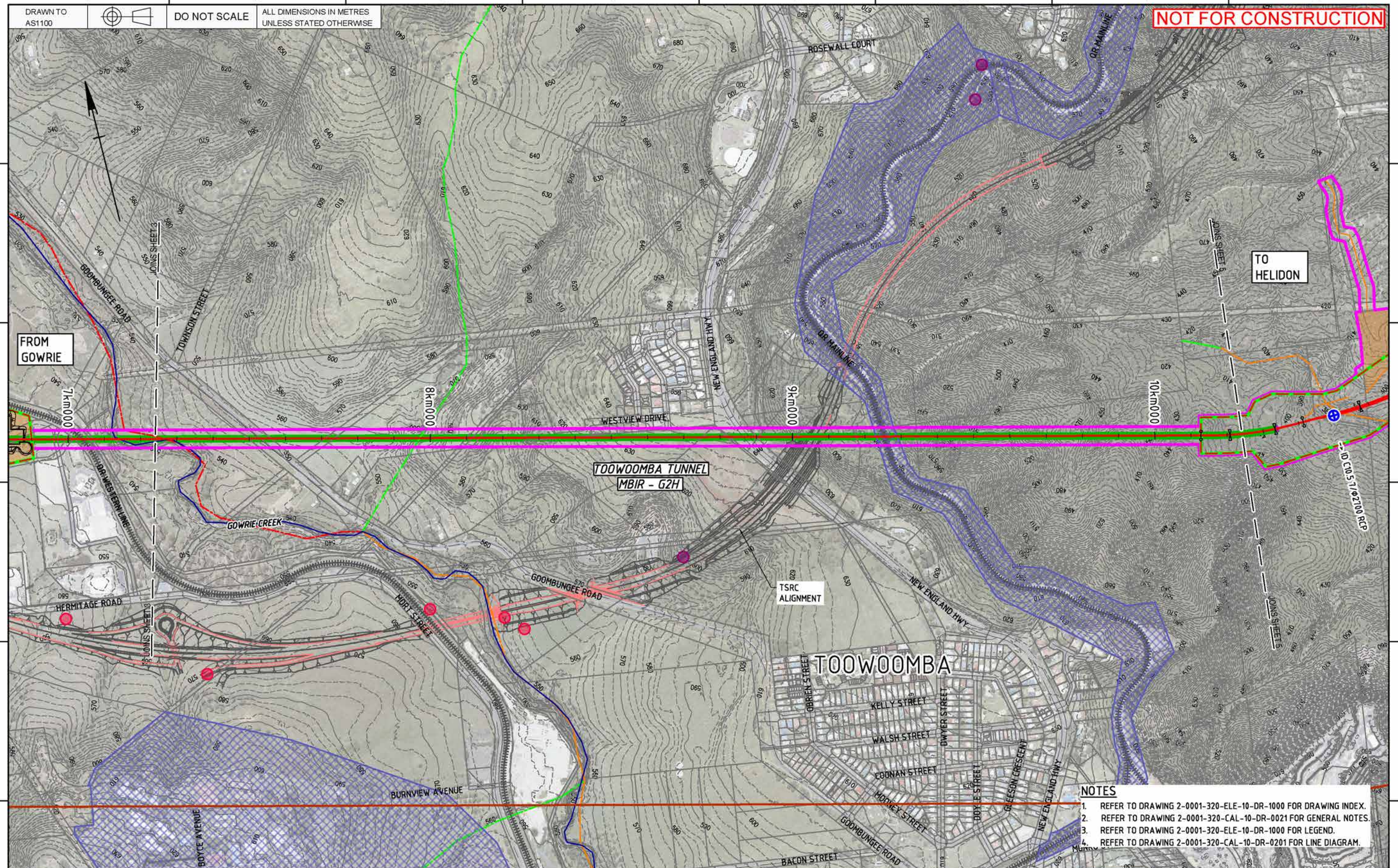
CAD File - C:\Users\Dorcas.Ogunshola\Documents\PDF G2H ENVIRONMENTAL PACK\2-0001-320-ELE-10-DR-1000.dwg

DRAWINGS

Drawing Set C Environmental design matters

GOWRIE TO HELIDON ENVIRONMENTAL IMPACT STATEMENT






© 2018 Australian Rail Track Corporation Ltd.
Drawing standard in accordance with EGP-04-01 & EGP-04-02

Used on / Next higher assembly: _____

Scale 1:5000 / 1:10000 0 50 100 150 200

Filename:	Alternate DMS number:
2-0001-320-ELE-10-DR-1004.DWG	

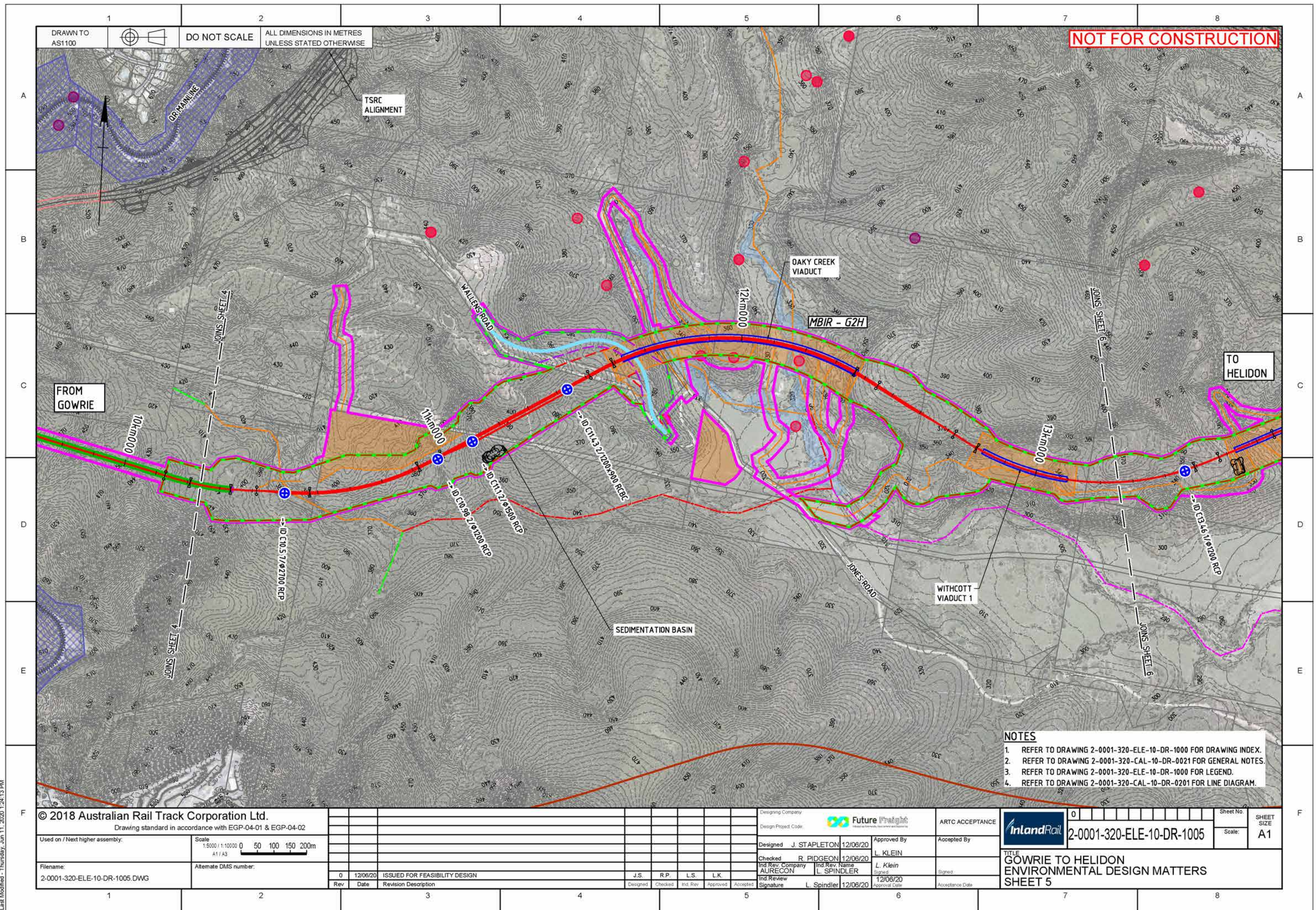
0.1	14/01/21	EIS AMENDMENT: DISTURBANCE FOOTPRINT UPDATED	J.S.	R.P.	L.S.	L.K.				
0	12/06/20	ISSUED FOR FEASIBILITY DESIGN	J.S.	R.P.	L.S.	L.K.				
Rev	Date	Revision Description	Designed	Checked	Ind. Rev	Approved	Accepted			

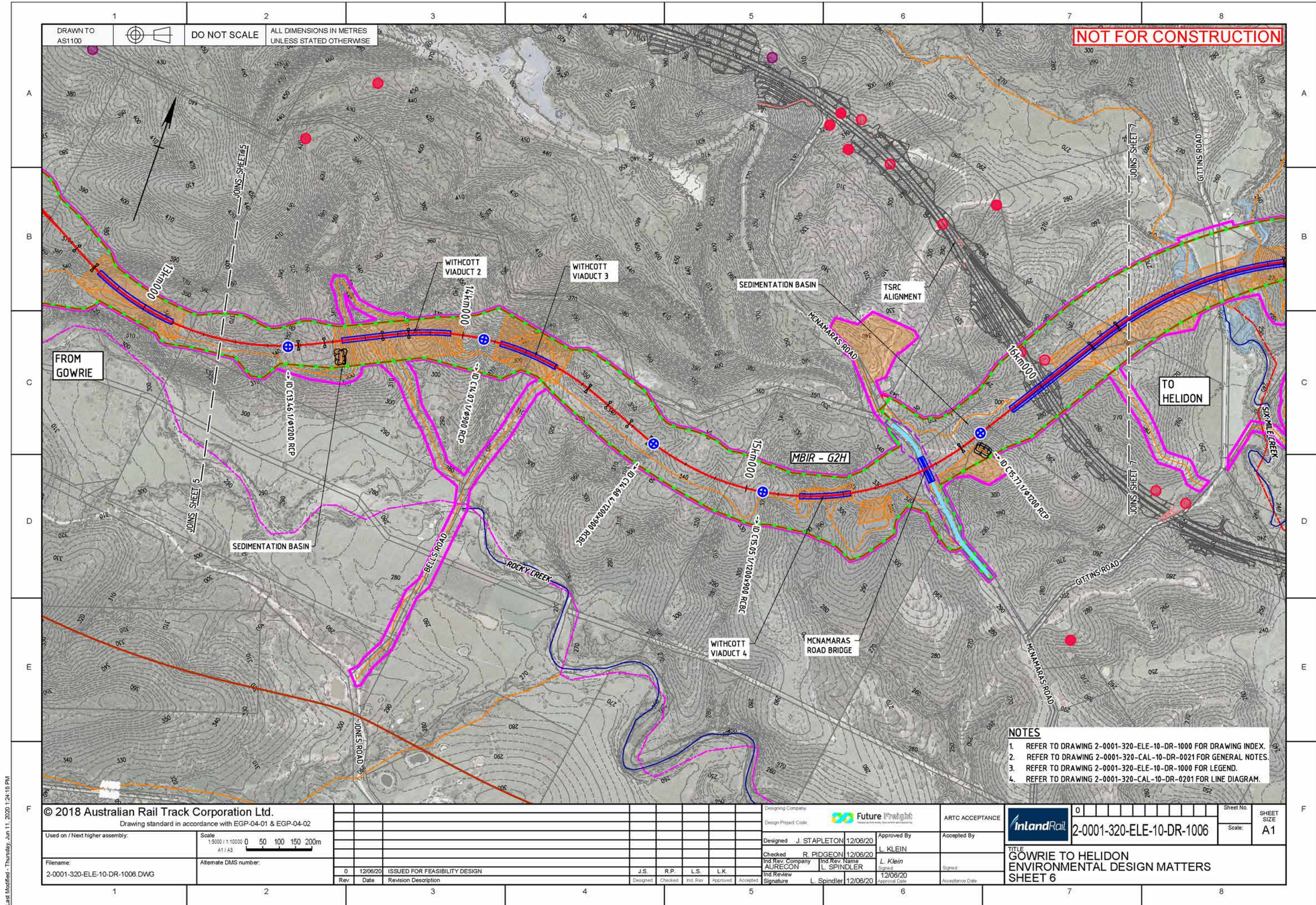
Designing Company		 Future Freight <small>Helping you connect people, places and products</small>	
Design Project Code			
Designed J. STAPLETON		12/06/20	Approved By
Checked R. PIDGEON		12/06/20	L. KLEIN
Inv Rev. Company AURECON	Inv Rev. Name L. SPINDLER		L. Klein Signed
Inv Review Signature	L. Spindler	12/06/20	12/06/20 Approval Date

	ARTC ACCEPTANCE
	Accepted By
	Signed:
	Acceptance Date

	<div></div>	<div></div>	<div></div>	<div></div>	<div></div>	<div></div>	<div></div>	<div></div>	<div></div>	<div></div>	<div></div>	Sheet No.	SHEET SIZE
	2-0001-320-ELE-10-DR-1004										Scale:	A1	
TITLE GOWRIE TO HELIDON ENVIRONMENTAL DESIGN MATTERS SHEET 4													

Last Modified - Thursday, Jun 11, 2020 1:24:13 PM





Last Modified - Thursday, Jun 11, 2020 1:24:15 PM

DRAWN TO AS1100
DO NOT SCALE
ALL DIMENSIONS IN METRES UNLESS STATED OTHERWISE

NOT FOR CONSTRUCTION

FROM GOWRIE

TO HELIDON

- NOTES
- 1. REFER TO DRAWING 2-0001-320-ELE-10-DR-1000 FOR DRAWING INDEX.
 - 2. REFER TO DRAWING 2-0001-320-CAL-10-DR-0021 FOR GENERAL NOTES.
 - 3. REFER TO DRAWING 2-0001-320-ELE-10-DR-1000 FOR LEGEND.
 - 4. REFER TO DRAWING 2-0001-320-CAL-10-DR-0201 FOR LINE DIAGRAM.

© 2018 Australian Rail Track Corporation Ltd.
Drawing standard in accordance with EGP-04-01 & EGP-04-02

Used on / Next higher assembly:

Scale: 1:5000 / 1:10000
A1 / A3

Filename: 2-0001-320-ELE-10-DR-1006.DWG

Alternate DMS number:

Rev	Date	Revision Description	Designed	Checked	Ind. Rev.	Approved	Accepted
0	12/06/20	ISSUED FOR FEASIBILITY DESIGN	J.S.	R.P.	L.S.	L.K.	

Designing Company: Future Freight

Design Project Code:

Designed: J. STAPLETON 12/06/20

Checked: R. PIDGEON 12/06/20

Ind. Rev. Company: AURECON

Ind. Rev. Name: L. SPINDLER

Ind. Review Signature: L. Spindler 12/06/20

Approved By: L. KLEIN

Approved Date: 12/06/20

ARTC ACCEPTANCE

Accepted By:

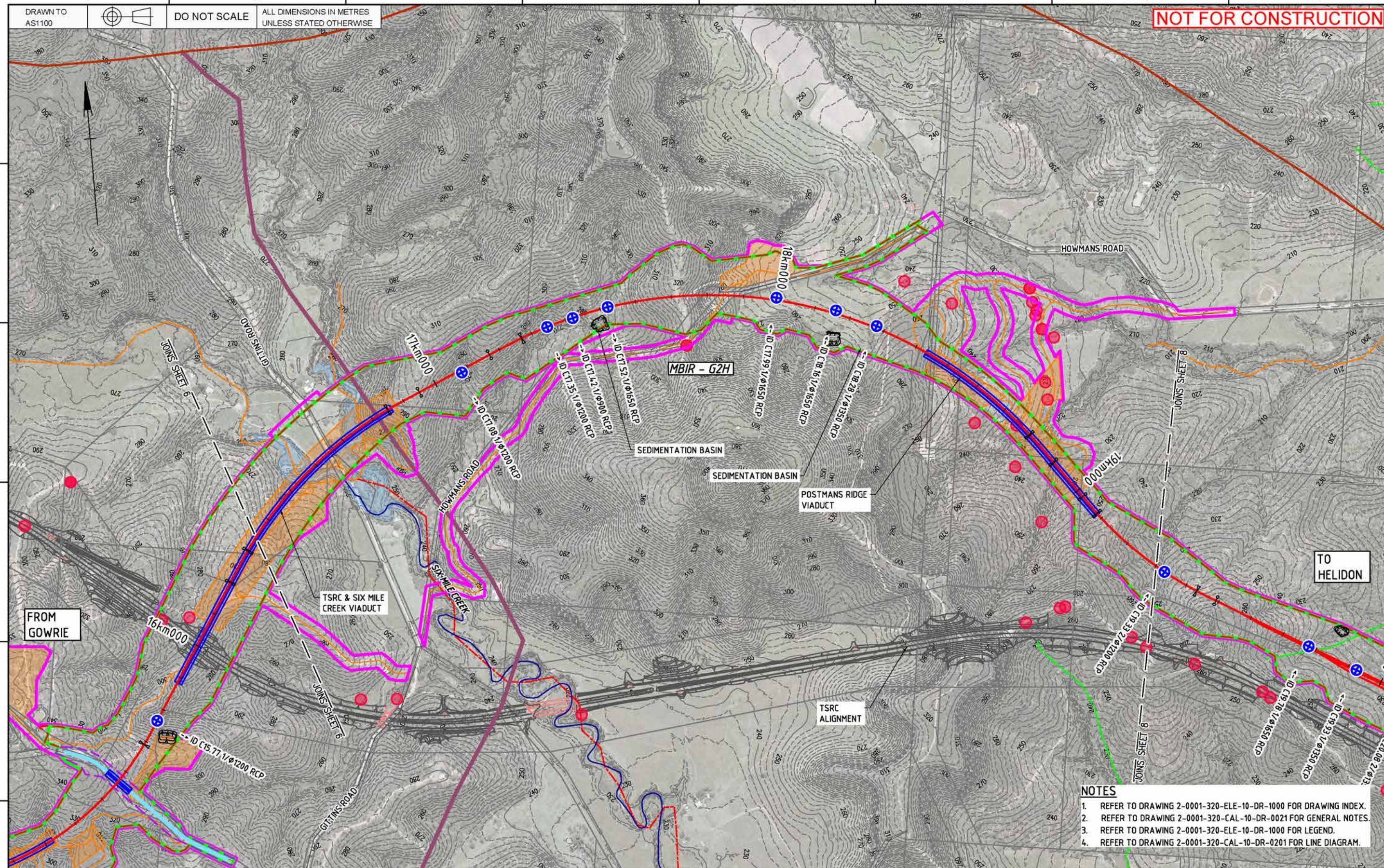
Acceptance Date:

InlandRail

2-0001-320-ELE-10-DR-1006


SHEET SIZE: A1

TITLE: GOWRIE TO HELIDON ENVIRONMENTAL DESIGN MATTERS SHEET 6

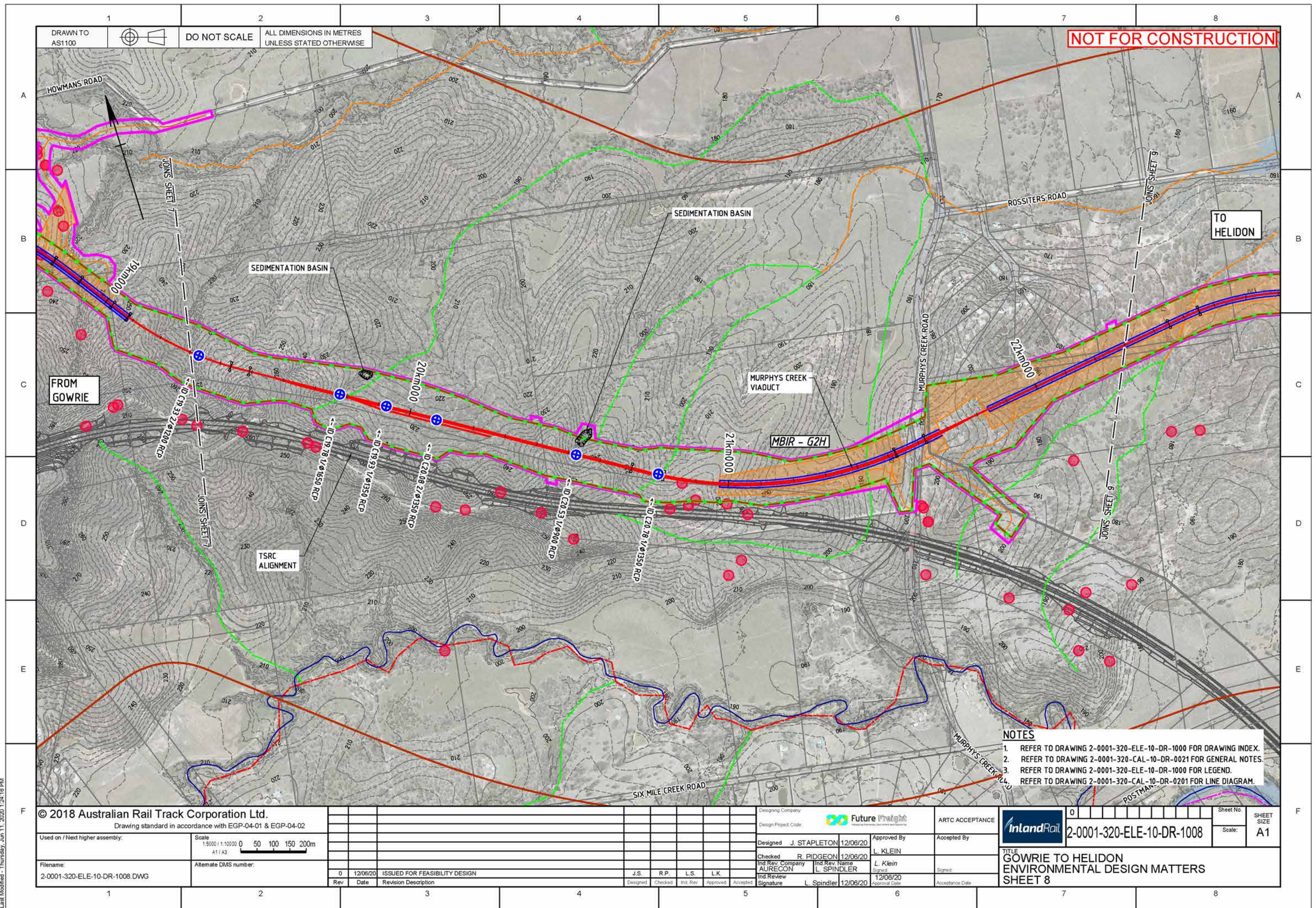


© 2018 Australian Rail Track Corporation Ltd.	
Drawing standard in accordance with EGP-04-01 & EGP-04-02	
Used on / Next higher assembly:	Scale 1:5000 / 1:10000 0 50 100 150 200 A1 / A3
Filename: 2-0001-320-ELE-10-DR-1007.DWG	Alternate DMS number:

0	12/06/20	ISSUED FOR FEASIBILITY DESIGN			J.S.	R.P.	L.S.	L.K.	
Rev	Date	Revision Description			Designed	Checked	Incl. Rev	Approved	Accessed

Designing Company		 Future Freight <small>Support for Chemistry, Biochemical and Biotechnology</small>		ARTC ACCEPTANCE
Design Project Code				
Designed	J. STAPLETON	12/06/20	Approved By	Accepted By
Checked	R. PIDGEON	12/06/20	L. KLEIN <small>Signed</small>	
Ind Rev. Company	AURECON	Ind Rev. Name	L. SPINDLER <small>Signed</small>	
Ind Review	Signature	L. Spindler	12/06/20	Signed
Ind			Acceptance Date	

E		0										Sheet No.	SHEET SIZE A1
		2-0001-320-ELE-10-DR-1007										Scale:	
	TITLE GOWRIE TO HELIDON ENVIRONMENTAL DESIGN MATTERS SHEET 7												

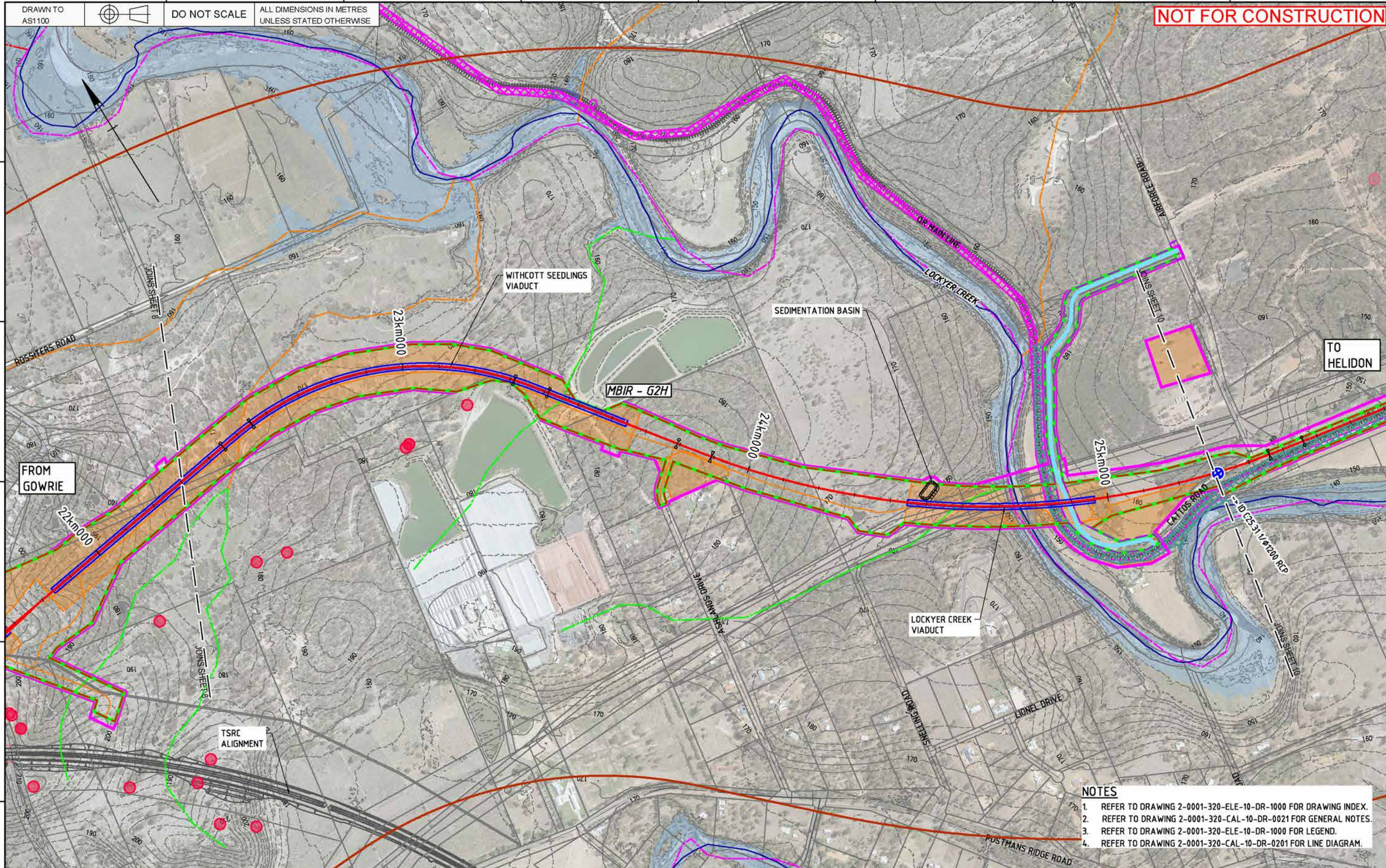


DRAWN TO
AS1100

DO NOT SCALE

ALL DIMENSIONS IN METRES
UNLESS STATED OTHERWISE

NOT FOR CONSTRUCTION



- NOTES
1. REFER TO DRAWING 2-0001-320-ELE-10-DR-1000 FOR DRAWING INDEX.
 2. REFER TO DRAWING 2-0001-320-CAL-10-DR-0021 FOR GENERAL NOTES.
 3. REFER TO DRAWING 2-0001-320-ELE-10-DR-1000 FOR LEGEND.
 4. REFER TO DRAWING 2-0001-320-CAL-10-DR-0201 FOR LINE DIAGRAM.

© 2018 Australian Rail Track Corporation Ltd.
Drawing standard in accordance with EGP-04-01 & EGP-04-02

Used on / Next higher assembly:

Scale
1:5000 / 1:10000
0 50 100 150 200m
A1 / A3

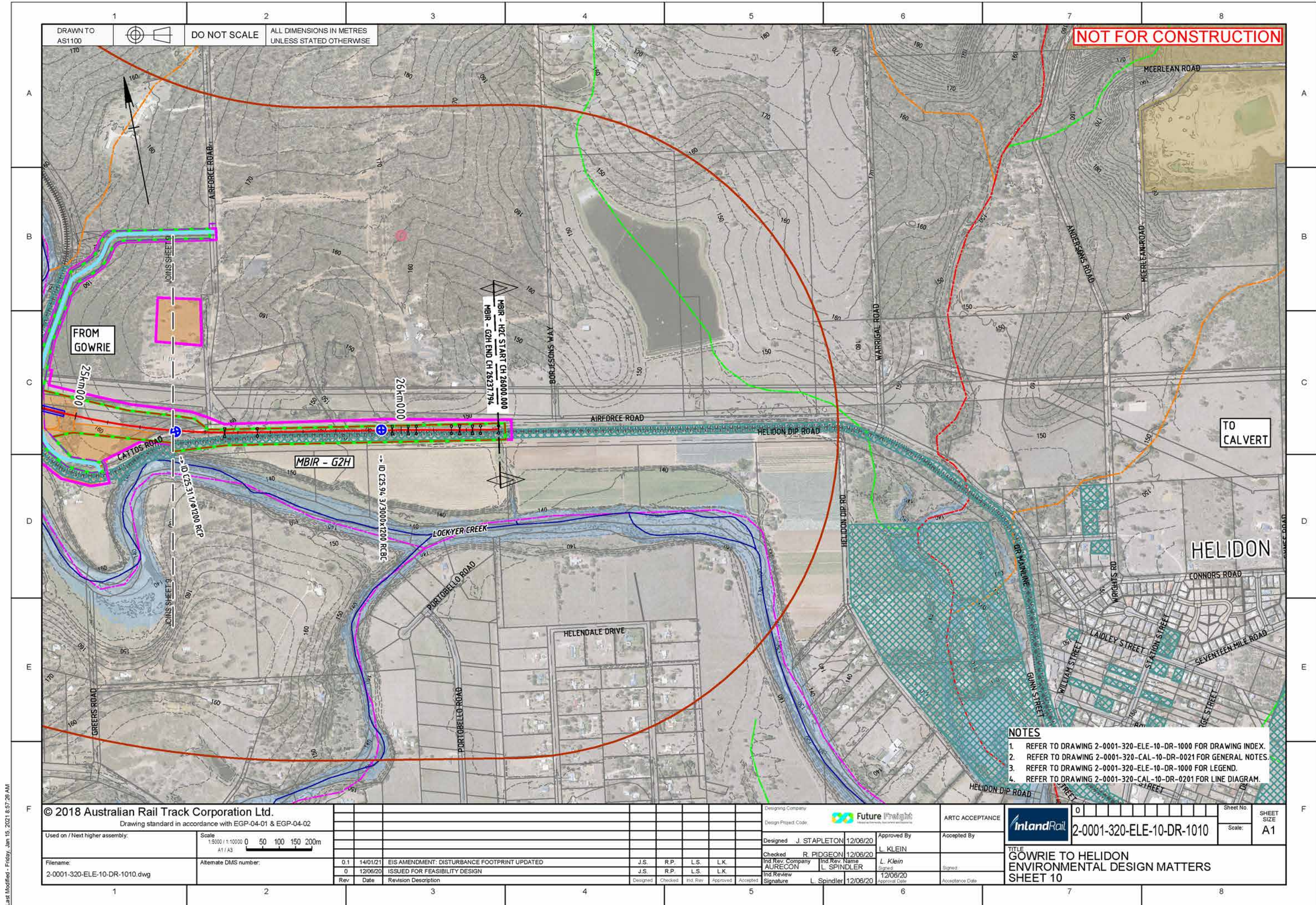
Filename:
2-0001-320-ELE-10-DR-1009.DWG

Alternate DMS number:

Rev	Date	Revision Description	Designed	Checked	Ind. Rev.	Approved	Accepted
0.1	14/01/21	EIS AMENDMENT: DISTURBANCE FOOTPRINT UPDATED	J.S.	R.P.	L.S.	L.K.	
0	12/06/20	ISSUED FOR FEASIBILITY DESIGN	J.S.	R.P.	L.S.	L.K.	

Designing Company	Future Freight	ARTC ACCEPTANCE	
Design Project Code		Accepted By	
Designed	J. STAPLETON 12/06/20	Approved By	L. KLEIN
Checked	R. PIDGEON 12/06/20	Ind. Rev. Name	L. Klein
Ind. Rev. Company	AURECON	Signature	L. Spindler 12/06/20
Ind. Rev. Date	12/06/20	Approval Date	

Sheet No.	0	Sheet Size	A1
Scale			
TITLE GOWRIE TO HELIDON ENVIRONMENTAL DESIGN MATTERS SHEET 9			



Last Modified - Friday, Jan 15, 2021 8:57:28 AM

© 2018 Australian Rail Track Corporation Ltd.

Drawing standard in accordance with EGP-04-01 & EGP-04-02

Used on / Next higher assembly:

Scale
1:50000 / 1:100000
A1 / A3

Filename:
2-0001-320-ELE-10-DR-1010.dwg

Alternate DMS number:

Rev	Date	Revision Description	Designed	Checked	Ind. Rev.	Approved	Accepted
0.1	14/01/21	EIS AMENDMENT: DISTURBANCE FOOTPRINT UPDATED	J.S.	R.P.	L.S.	L.K.	
0	12/06/20	ISSUED FOR FEASIBILITY DESIGN	J.S.	R.P.	L.S.	L.K.	

Designing Company
Design Project Code

Future Freight

ARTC ACCEPTANCE

Designed J. STAPLETON 12/06/20

Checked R. PIDGEON 12/06/20

Ind. Rev. Company AURECON

Ind. Rev. Name L. SPINDLER

Ind. Review Signature L. Spindler 12/06/20

Approved By L. KLEIN

Ind. Rev. Name L. Klein

Ind. Review Date 12/06/20

Accepted By

Signature

Acceptance Date

Sheet No. 0

Scale: A1

SHEET SIZE A1

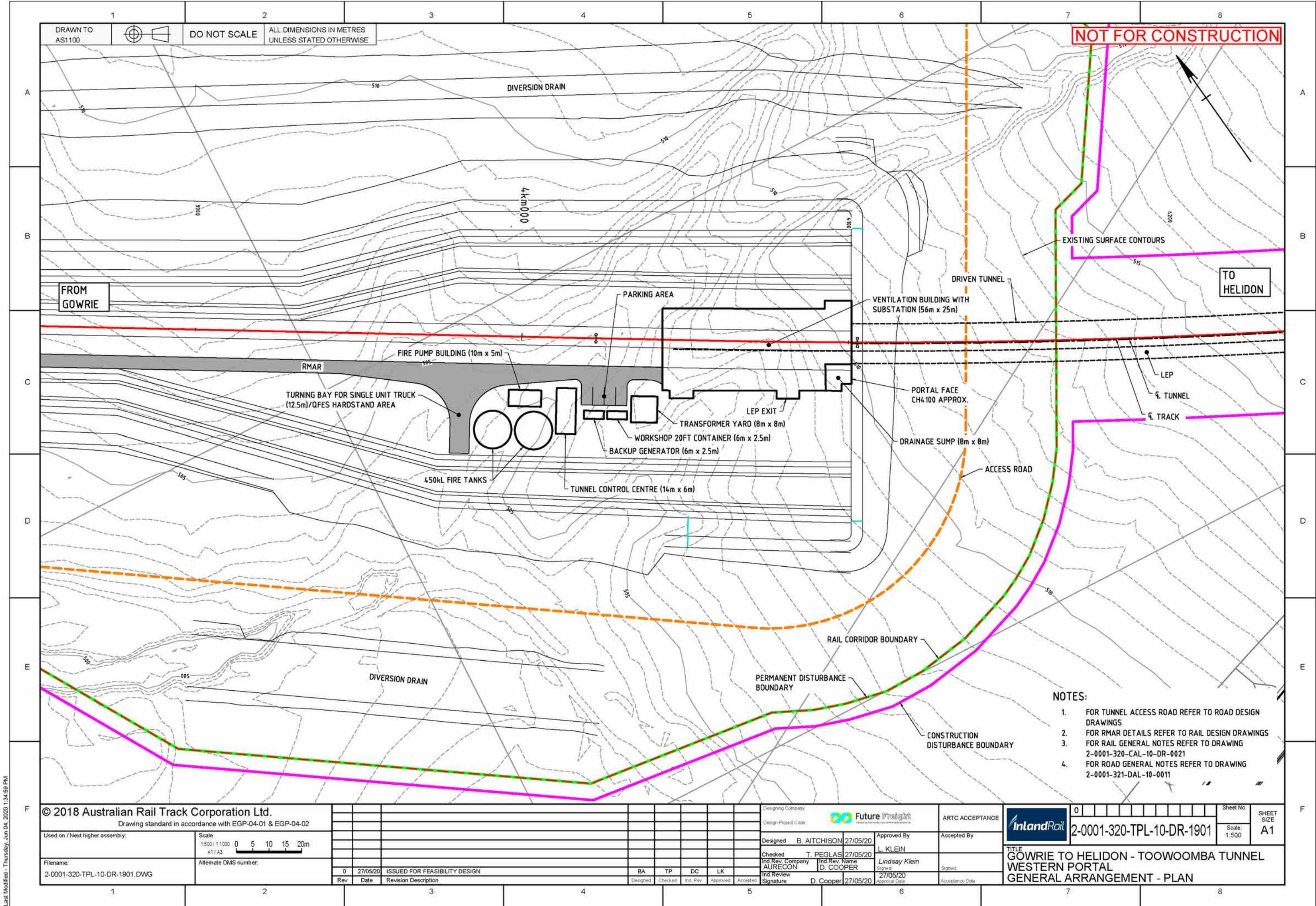
TITLE
GOWRIE TO HELIDON
ENVIRONMENTAL DESIGN MATTERS
SHEET 10

DRAWINGS

Drawing Set D Toowoomba Tunnel Western Portal general arrangement plan

GOWRIE TO HELIDON ENVIRONMENTAL IMPACT STATEMENT





DRAWINGS

Drawing Set E

Toowoomba Tunnel
intermediate ventilation
shaft general arrangement plan

GOWRIE TO HELIDON ENVIRONMENTAL IMPACT STATEMENT



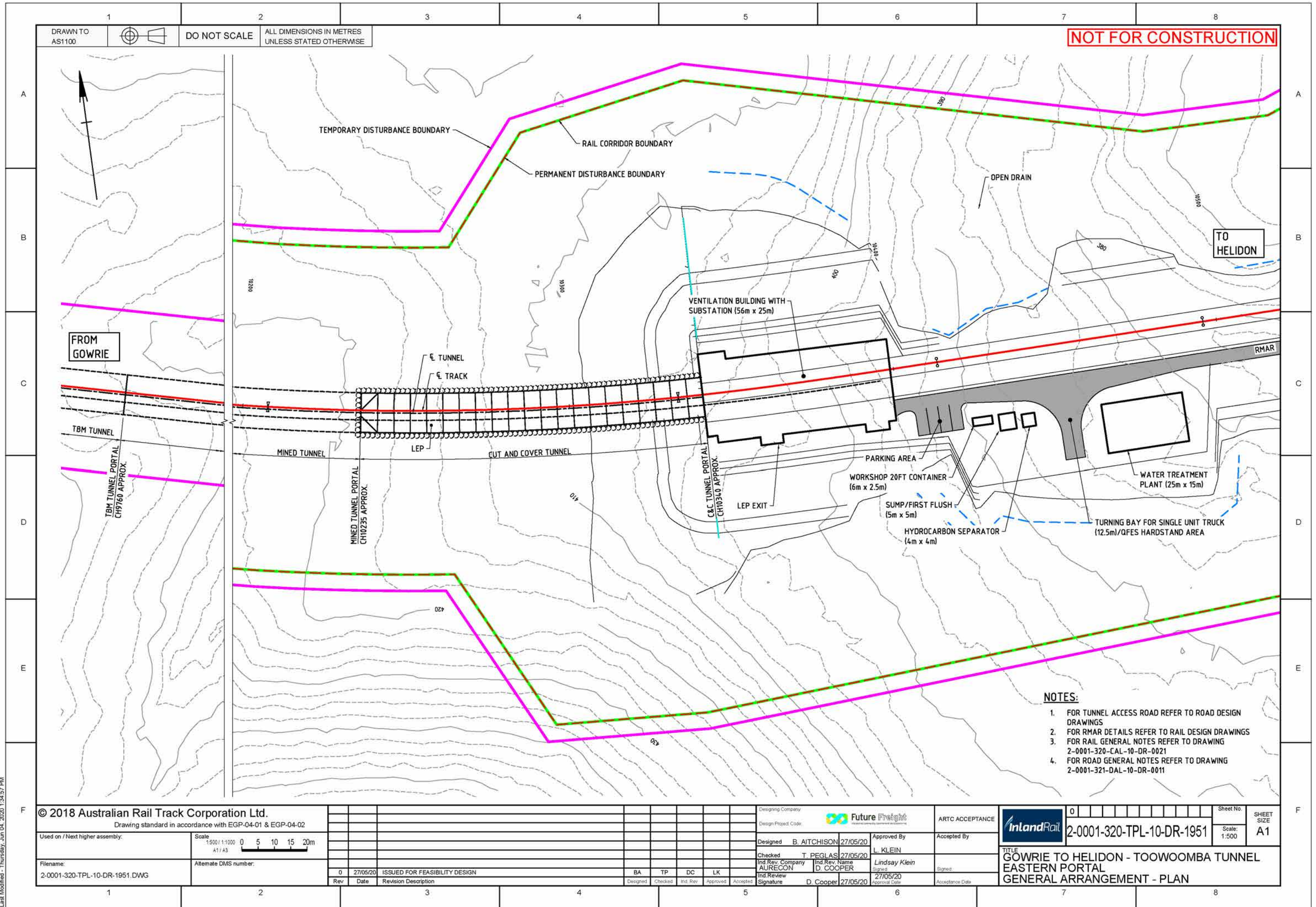
DRAWINGS

Drawing Set F Toowoomba Tunnel Eastern Portal general arrangement plan

GOWRIE TO HELIDON ENVIRONMENTAL IMPACT STATEMENT



Last Modified - Thursday, Jun 04, 2020 1:34:57 PM



DRAWINGS

Drawing Set G Toowoomba Tunnel Spaceproofing TBM tunnel, typical cross section

GOWRIE TO HELIDON ENVIRONMENTAL IMPACT STATEMENT



DRAWN TO
AS1100



DO NOT SCALE

ALL DIMENSIONS IN METRES
UNLESS STATED OTHERWISE

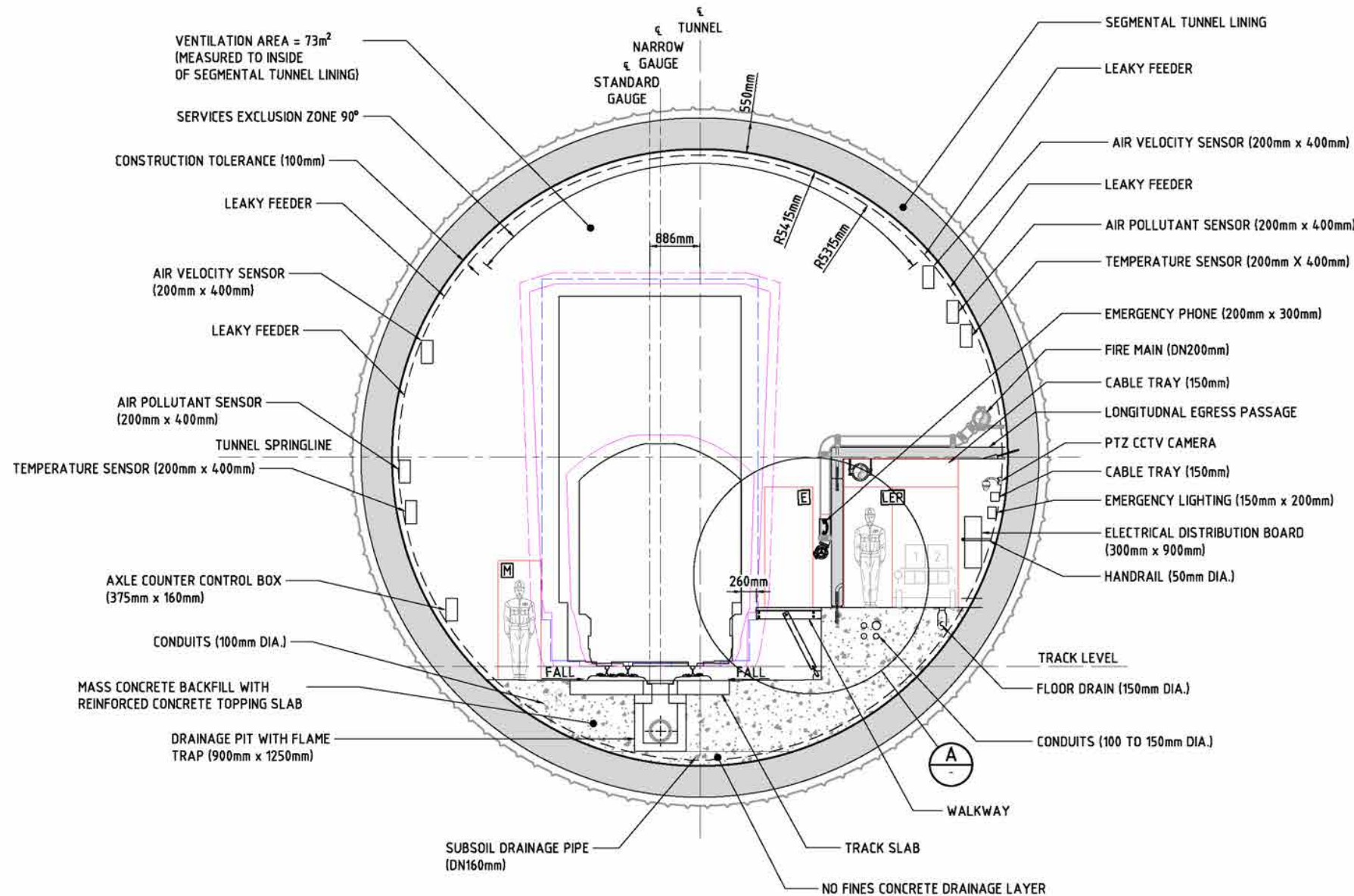
NOT FOR CONSTRUCTION

NOTES:

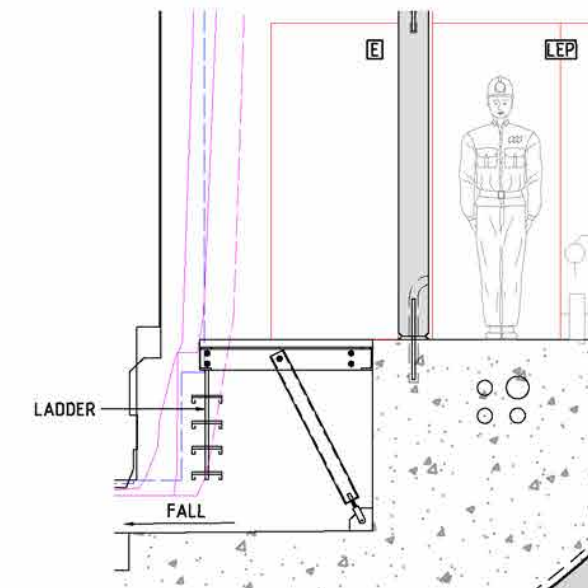
1. CROSS SECTION SHOWN PERPENDICULAR TO THE TRACK ALIGNMENT IN THE DIRECTION OF INCREASING CHAINAGE.
2. FOR TRAIN PROFILE INCLUDING KINEMATIC ENVELOPE, REFER TO FEASIBILITY DESIGN REPORT (2-0001-320-PEN-10-RP-0001).
3. KINEMATIC ENVELOPE SHOWN IS FOR STRAIGHT TRACK.
4. CONDUITS FOR SERVICES REQUIRED BETWEEN EACH SIDE OF THE TUNNEL SHALL BE PROVIDED BENEATH THE TRACK SLAB IN LOCAL TRENCH AS REQUIRED.
5. FOR TRACK SLAB DETAILS REFER TO DRAWING 2-0001-320-CTR-10-DR-506.

LEGEND

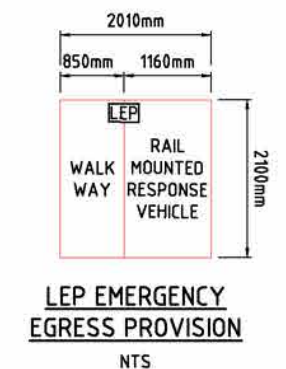
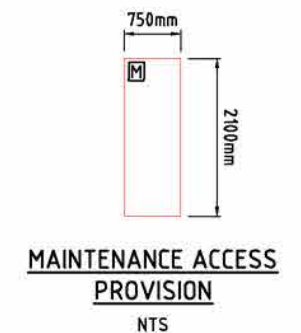
- STATIC ENVELOPE
- KINEMATIC ENVELOPE
- KINEMATIC ENVELOPE PLUS 200mm AIR GAP
- DERAILMENT JACKING CLEARANCE



**TBM TUNNEL
TANGENT TRACK - TYPICAL CROSS SECTION**
SCALE 1:50



**DETAIL A
SCALE 1:25**



1:25 / 1:50 0 500 1000mm 1:50 / 1:100 0 1000 2000mm
A1 / A3 A1 / A3

© 2018 Australian Rail Track Corporation Ltd.

Drawing standard in accordance with EGP-04-01 & EGP-04-02

Used on / Next higher assembly:

Scale
AS SHOWN

Filename:
2-0001-320-TTT-20-DR-1101.DWG

Alternate DMS number:

0 27/05/20 ISSUED FOR FEASIBILITY DESIGN

BA TP DC LK

Designing Company:

Design Project Code:

Future Freight

Designed B. AITCHISON 27/05/20

Checked T. PEGLAS 27/05/20

Ind. Rev. Company AURECON Ind. Rev. Name D. COOPER

Ind. Review Signature D. Cooper 27/05/20

Approved By L. KLEIN

Signed Lindsay Klein

27/05/20

Approval Date

ARTC ACCEPTANCE

Accepted By

Signed

Acceptance Date

InlandRail

2-0001-320-TTT-20-DR-1101

TITLE
GOWRIE TO HELIDON - TOOWOOMBA TUNNEL
SPACEPROOFING
TBM TUNNEL - TYPICAL CROSS SECTION

Sheet No.

Scale: 1:50

SHEET SIZE

A1

DRAWINGS

Drawing Set H Toowoomba Tunnel Spaceproofing mined tunnel, typical cross section

GOWRIE TO HELIDON ENVIRONMENTAL IMPACT STATEMENT





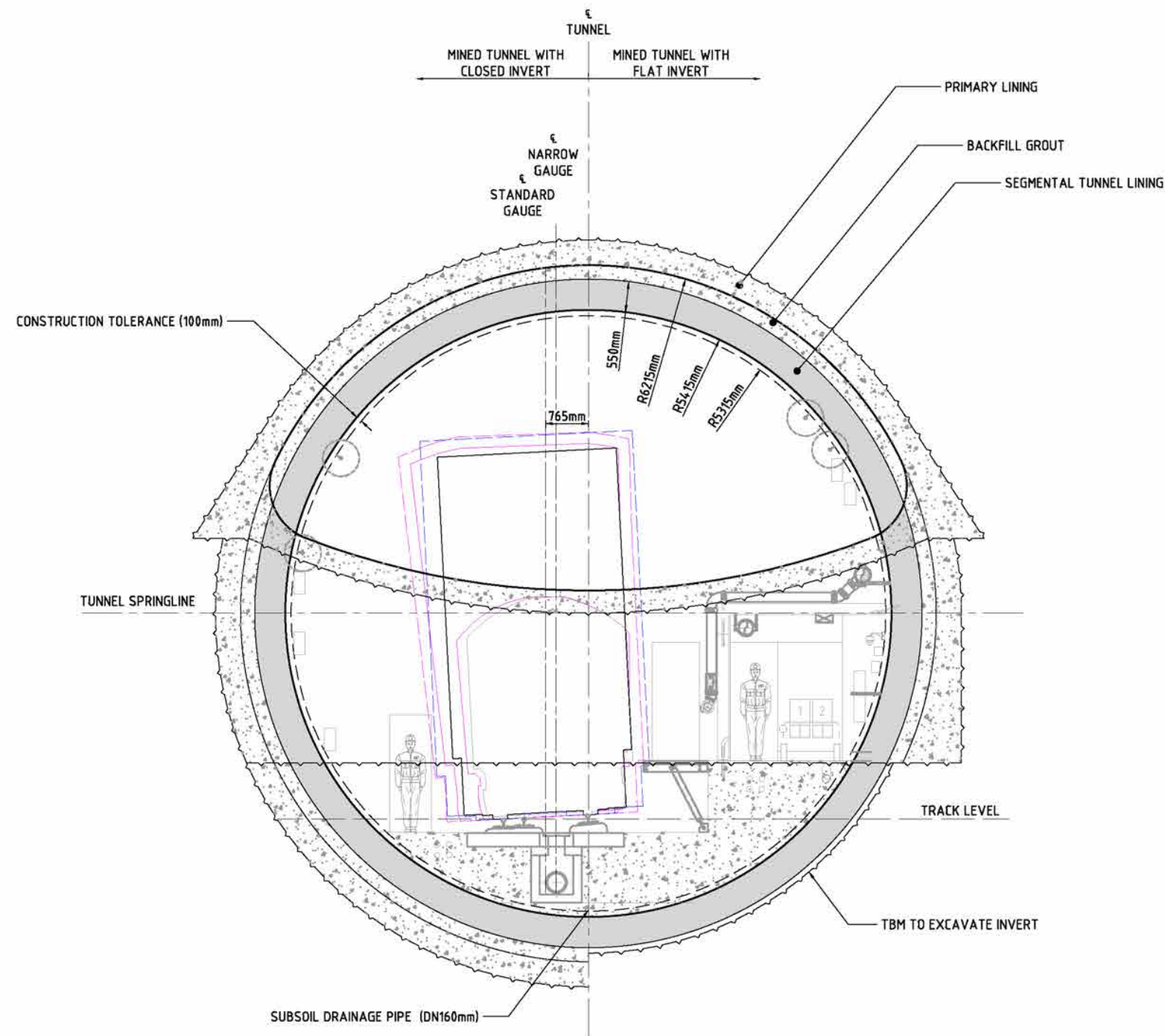
NOT FOR CONSTRUCTION

NOTES:

1. TEMPORARY LINING SHOWN HAS BEEN PROVIDED TO SUIT SPACEPROOFING REQUIREMENTS. TEMPORARY SUPPORT AND TUNNEL SHAPE/FORM SHOWN ON DRAWING 2-0001-320-TTT-20-DR-1201.
2. FOR TBM SPACEPROOFING DETAILS REFER DRAWING 2-0001-320-TTT-20-DR-1101.

LEGEND

-  STATIC ENVELOPE
 KINEMATIC ENVELOPE
 KINEMATIC ENVELOPE PLUS 200mm AIR GAP
 DERAILMENT JACKING CLEARANCE



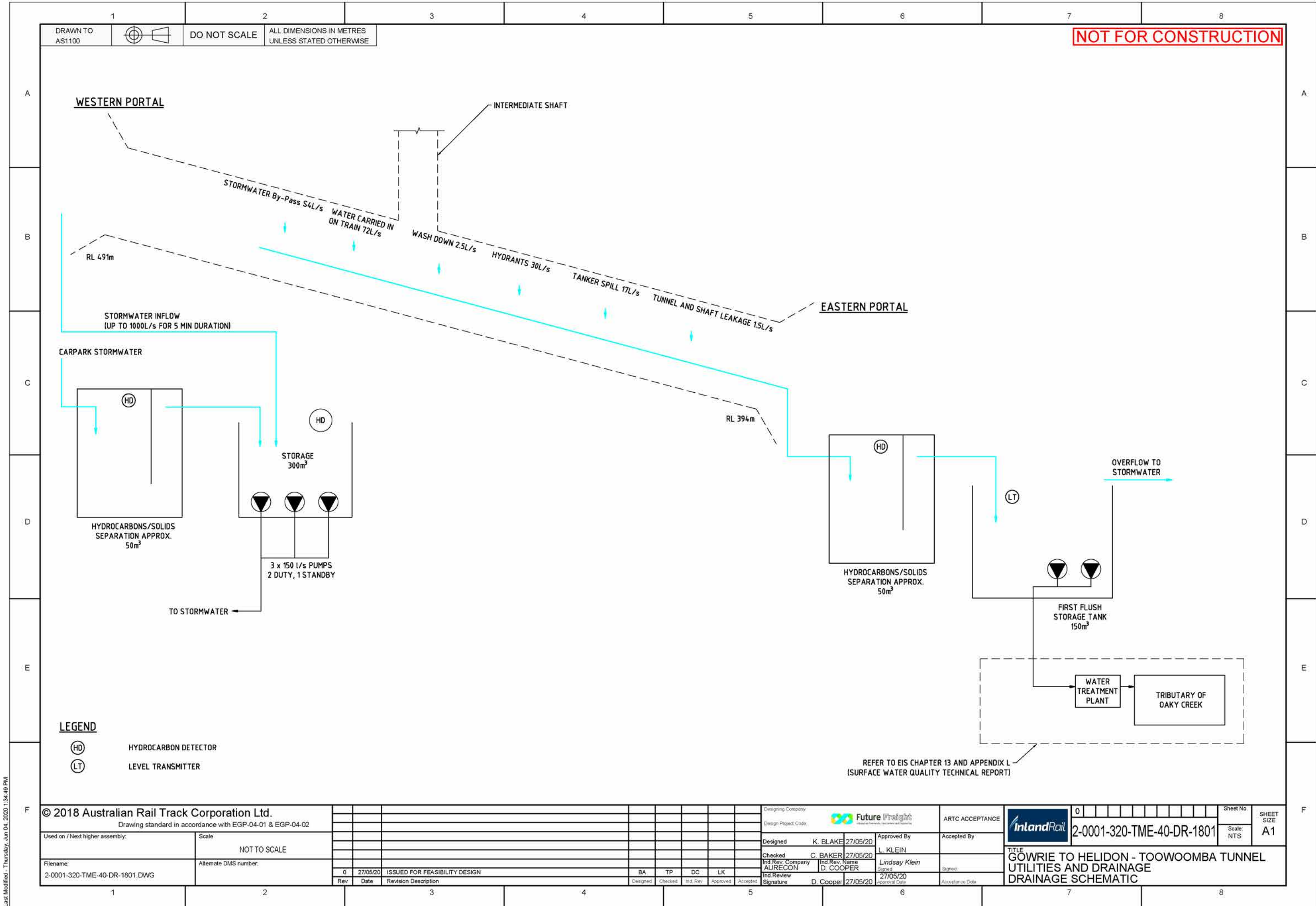
MINED TUNNEL
R800 RADIUS LEFT - TYPICAL CROSS SECTION
SCALE 1:50

DRAWINGS

Drawing Set I Toowoomba Tunnel utilities and drainage, drainage schematic

GOWRIE TO HELIDON ENVIRONMENTAL IMPACT STATEMENT





DRAWINGS

Drawing Set J Standard fauna exclusions fence details

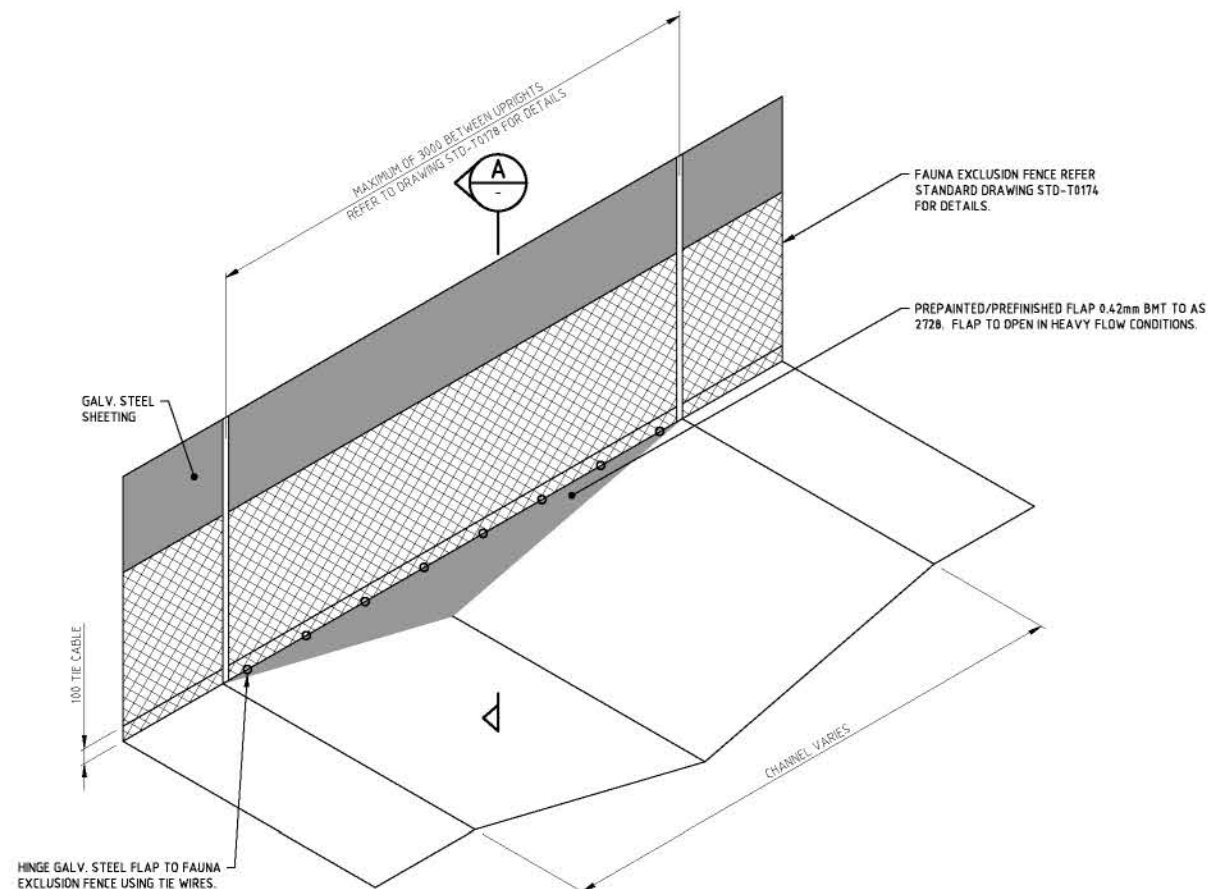
GOWRIE TO HELIDON ENVIRONMENTAL IMPACT STATEMENT



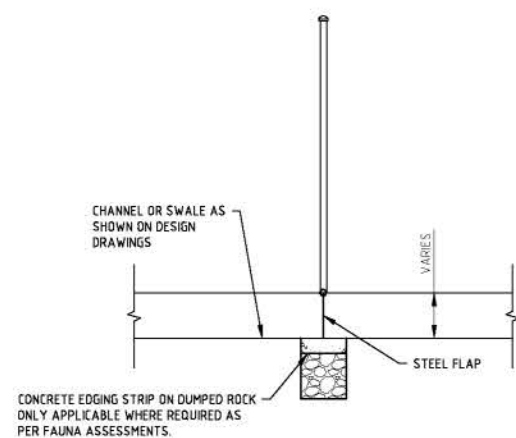
DRAWN TO
AS1100

DO NOT SCALE

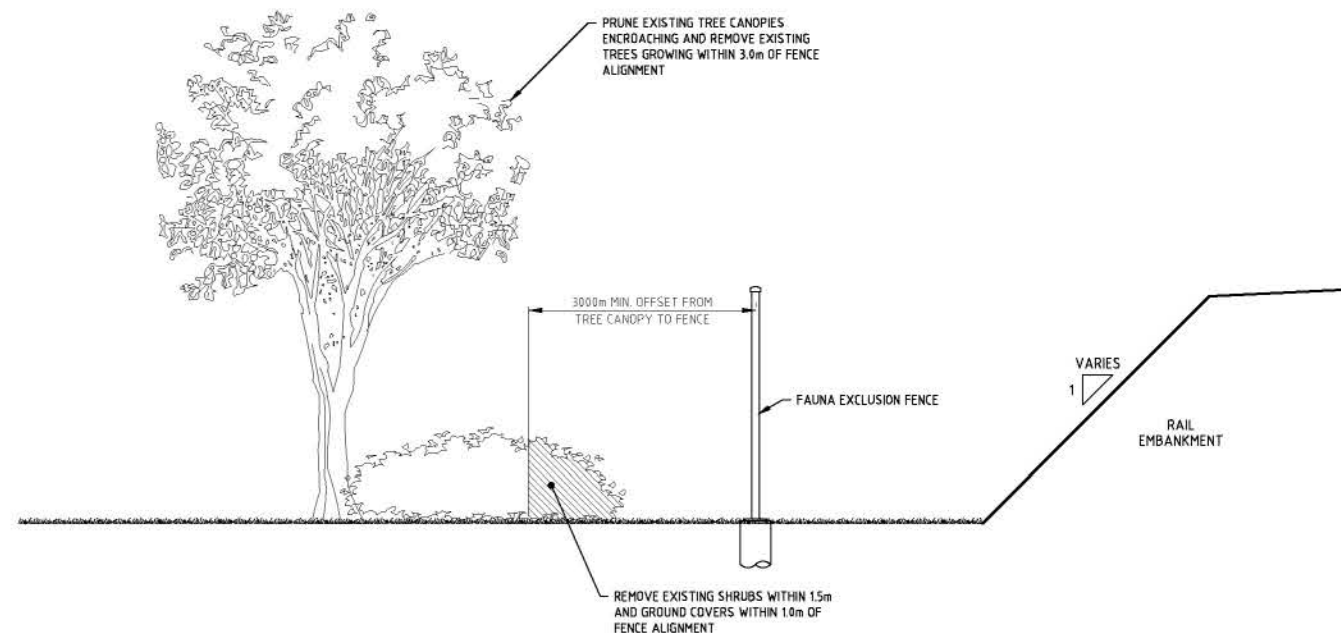
ALL DIMENSIONS IN MM
UNLESS STATED OTHERWISE



**ISOMETRIC VIEW
FAUNA EXCLUSION FENCE OVER CHANNEL**
SCALE 1:25



SECTION A
SCALE 1:25



**VEGETATION SETBACKS ALONG FAUNA EXCLUSION
FENCE LINES - TYPICAL DETAIL**
SCALE 1:50

NOTES

- FOR ALL CHAIN LINK FENCE NOTES REFER TO STANDARD DRAWING STD-T0193.
- THIS DRAWING SHALL BE READ IN CONJUNCTION WITH STANDARD DRAWING STD-T0174.

© 2017 Australian Rail Track Corporation Ltd.

Drawing standard in accordance with EGP-04-01 & EGP-04-02

Used on / Next higher assembly:

Scale
A1 / A3
1:25 / 1:50
0 500 1000mm

Filename:

Alternate DMS number:

Rev	Date	Revision Description	Designed	Checked	Ind. Rev.	Approved	Accepted
0	05/06/17	ISSUE FOR ARTC ACCEPTANCE	BD	RB	JR	CD	DO

Designing Company
SMEC

Design Project Code:
30001593

Designed
B. DUNNE
21/03/17

Checked
R. BRAZIER
21/03/17

Ind. Rev. Company
SMEC

Ind. Rev. Name
J. ROBINSON

Ind. Review
Signature

Approved By
C. DAS GUPTA
21/03/17

Signature
C. DAS GUPTA

Approval Date
05/06/17

ARTC ACCEPTANCE

Accepted By
D. OGUCHA

Signature
D. OGUCHA

Acceptance Date
06/07/17

ARTC
STD-T0173

TITLE
STANDARD FAUNA EXCLUSION FENCE
DETAILS SHEET 1

Sheet No.
0

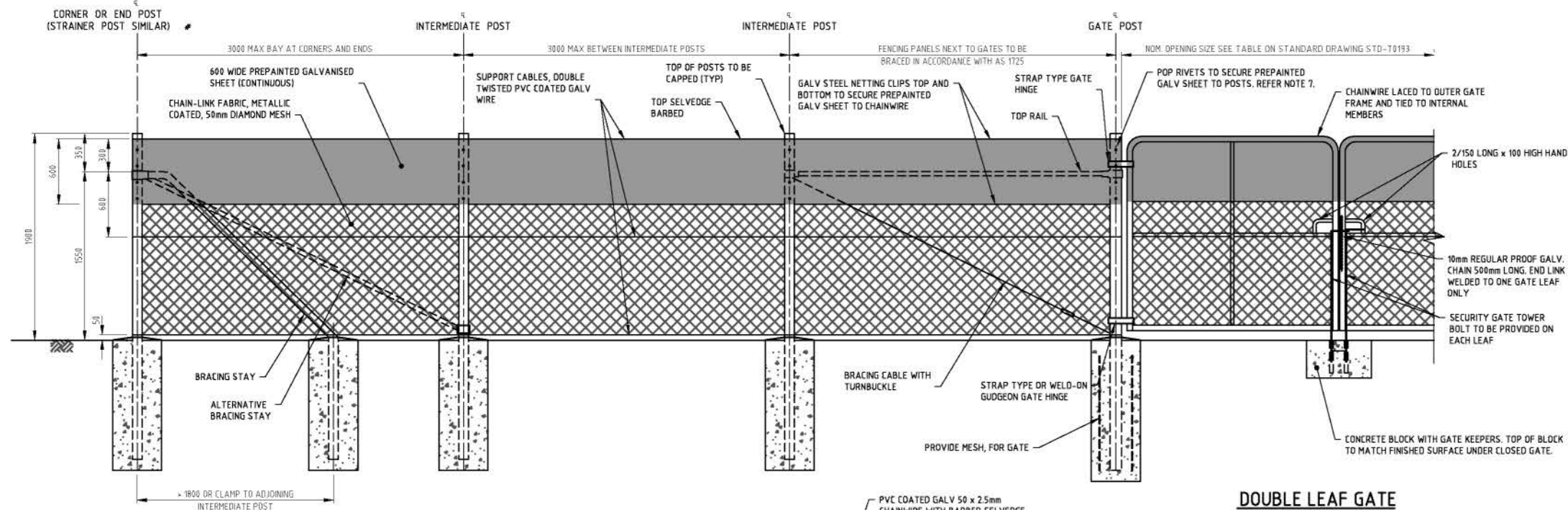
Scale:

SHEET
SIZE
A1

DRAWN TO
AS1100

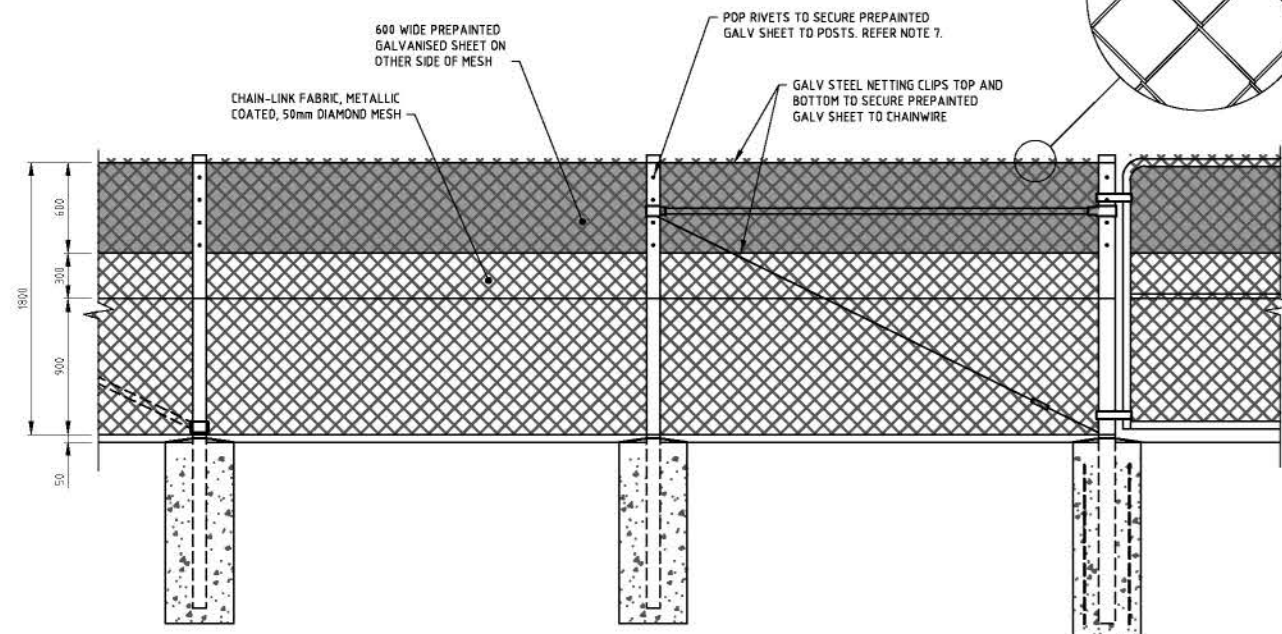
DO NOT SCALE

ALL DIMENSIONS IN MM
UNLESS STATED OTHERWISE



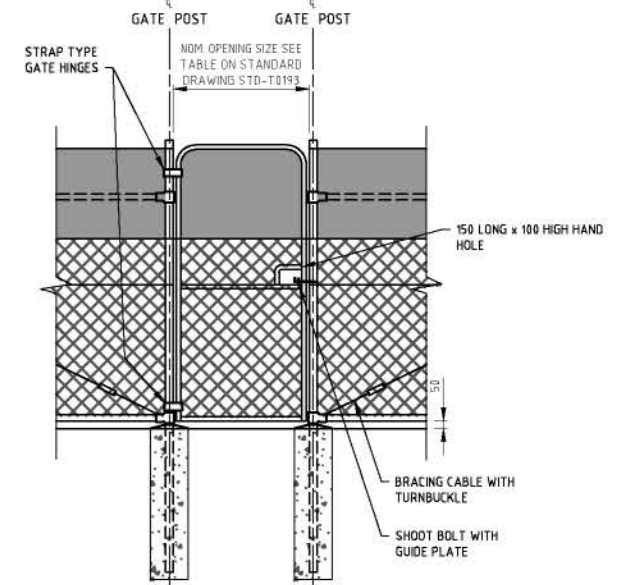
FAUNA EXCLUSION FENCE AND GATE
TYPICAL ELEVATION
VIEW FROM OUTSIDE RAIL CORRIDOR
SCALE 1:25

NOTE:
STRAINER POST ASSEMBLIES SHALL CONSIST OF DIAGONAL BRACING STAYS EACH SIDE OF POST AS SHOWN ON CORNER POST DETAIL. STRAINER POSTS SHALL BE INSTALLED AT 150m MAXIMUM INTERVALS ON STRAIGHT LENGTHS AND AT ANY SIGNIFICANT CHANGES IN DIRECTION IN ACCORDANCE WITH AS 1725.



FAUNA EXCLUSION FENCE AND GATE
TYPICAL ELEVATION
VIEW FROM INSIDE RAIL CORRIDOR
SCALE 1:25

DOUBLE LEAF GATE
SCALE 1:25



SINGLE LEAF GATE
SCALE 1:25

NOTES

- FOR ALL CHAIN LINK FENCE NOTES REFER TO STANDARD DRAWING STD-T0193.
- THIS DRAWING SHALL BE READ IN CONJUNCTION WITH STANDARD DRAWING STD-T0173.
- CIRCULAR HOLLOW SECTIONS (CHS) TO BE GRADE C350 TO AS 1163.
- GALVANISED CHAINWIRE SHALL CONFORM TO AS 2423 WITH A MESH SIZE OF 50mm AND 2.5mm DIAMETER WIRE AND COATED WITH GREEN PVC.
- SELVEDGES: BARBED SELVEDGES SHALL BE USED AT TOP EXCEPT ON GATES WHERE KNUCKLED SELVEDGES ARE USED TOP AND BOTTOM.
- PREFINISHED/PREPARED GALVANISED STEEL SHEET SHALL BE 0.42mm BMT TO AS 2728 COLOURED ON BOTH SIDES. THE COLOUR SHALL BE SUBJECT TO FINAL APPROVAL BY AN AUTHORISED ENVIRONMENTAL REPRESENTATIVE.
- CHAINWIRE AND PREPARED GALVANISED SHEET SHALL BE LOCATED ON THE OPPOSITE SIDE OF THE POSTS TO THE RAILWAY TO PREVENT FAUNA CLIMBING THE CHS POSTS AND STAYS.
- CORNER POSTS TO BE ADOPTED WHERE THE CHANGE IN ANGLE IN HORIZONTAL ALIGNMENT EXCEEDS 20 DEGREES.
- BOLTS NUTS AND WASHERS TO BE HOT DIP GALVANISED TO AS 1214.
- WELDING SHALL BE TO AS/NZS 1554.1.
- CONNECTION TO CULVERT HEADWALLS SHALL BE DESIGNED AND CERTIFIED BY AN AUTHORISED ENGINEER.
- DEPTH AND DIAMETER OF POST FOUNDATIONS SHALL BE DETERMINED AND CERTIFIED BY AN AUTHORISED ENGINEER.
- ARRANGEMENTS SHOWN ARE TYPICAL ONLY. AN AUTHORISED ENVIRONMENTAL REPRESENTATIVE SHALL NOMINATE FENCE TYPE BASED ON ASSESSMENTS.
- DIMENSIONS AND INCLUSIONS TO BE NOMINATED BY AN AUTHORISED ENVIRONMENTAL REPRESENTATIVE IN ACCORDANCE WITH THE RELEVANT JURISDICTION'S GUIDELINES.

© 2017 Australian Rail Track Corporation Ltd.

Drawing standard in accordance with EGP-04-01 & EGP-04-02

Used on / Next higher assembly:

Scale
A1 / A3
1:25 / 1:50
0 500 1000mm

Filename:

Alternate DMS number:

Rev	Date	Revision Description
0	05/06/17	ISSUE FOR ARTC ACCEPTANCE

BD	RB	JR	CD	DO
Designed	Checked	Ind Rev	Approved	Accepted

Designing Company:

Design Project Code:

Designed

Checked

Ind Rev Company

Ind Review Signature

B. DUNNE

R. BRAZIER

J. ROBINSON

J. ROBINSON

J. ROBINSON

21/03/17

21/03/17

21/03/17

05/06/17

05/06/17

SMC

SMC

SMC

SMC

SMC

ARTC ACCEPTANCE

Approved By

C. DAS GUPTA

C. DAS GUPTA

C. DAS GUPTA

ARTC

STD-T0174

STD-T0174

STD-T0174

STD-T0174

0

STD-T0174

STD-T0174

STD-T0174

STD-T0174

Sheet No.

Scale:

A1

A1

A1

STANDARD FAUNA EXCLUSION FENCE
DETAILS SHEET 2

DRAWINGS

Drawing Set K Standard chain link boundary fence

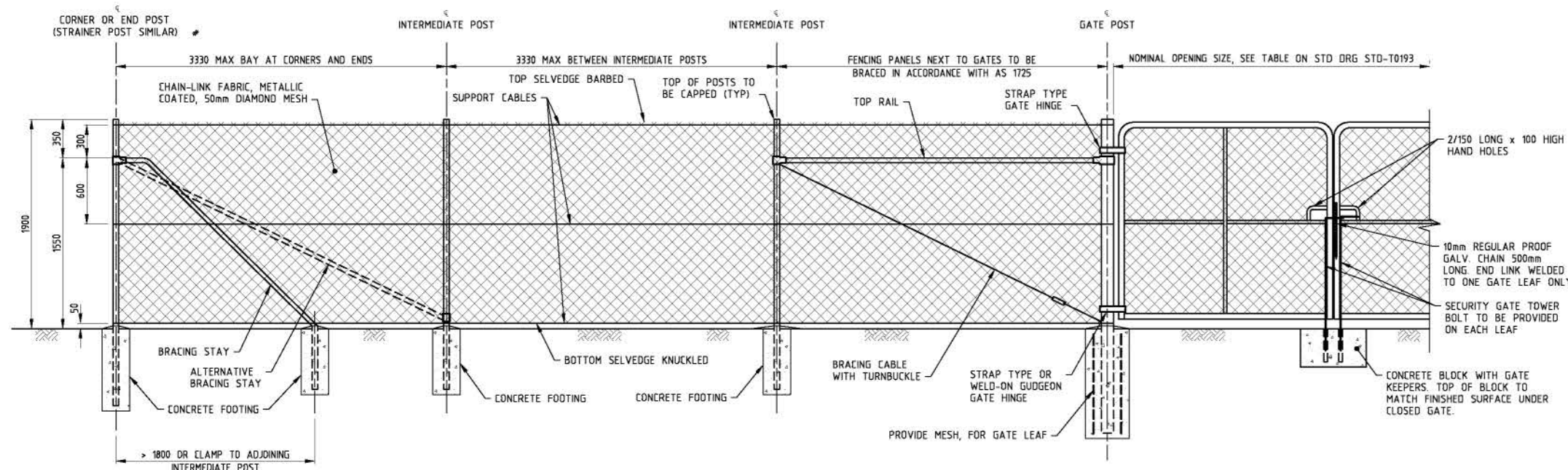
GOWRIE TO HELIDON ENVIRONMENTAL IMPACT STATEMENT



DRAWN TO
AS1100

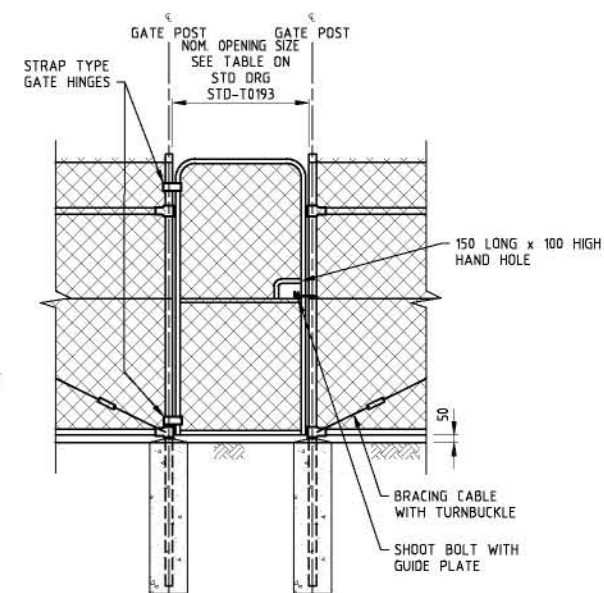
DO NOT SCALE

ALL DIMENSIONS IN MM
UNLESS STATED OTHERWISE

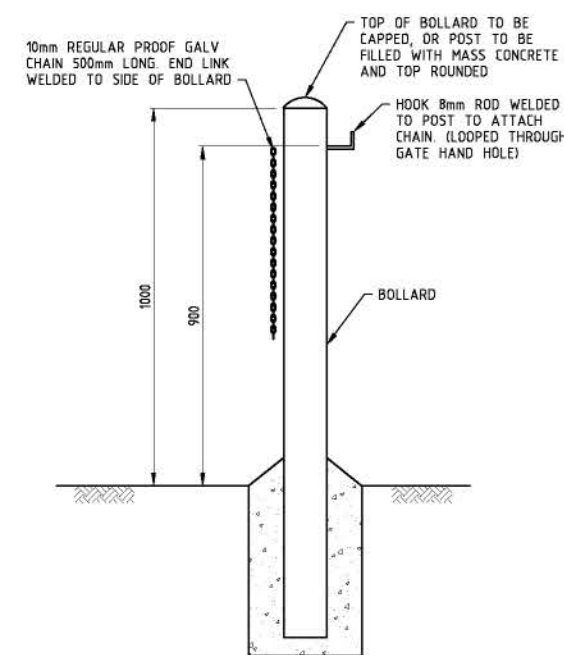


TYPICAL ELEVATION
SCALE 1:25

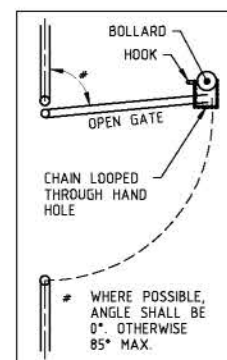
DOUBLE LEAF GATE
SCALE 1:25



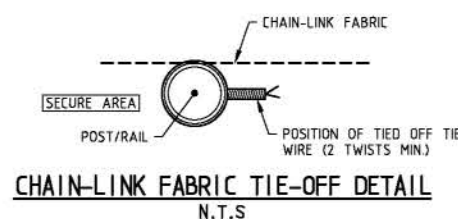
SINGLE LEAF GATE
SCALE 1:25



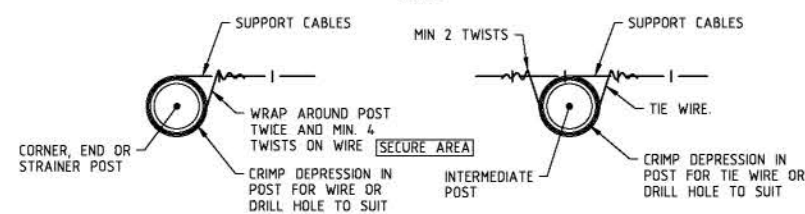
BOLLARD DETAIL
SCALE 1:10



**BOLLARD LOCATION
RELATIVE TO GATE**
N.T.S

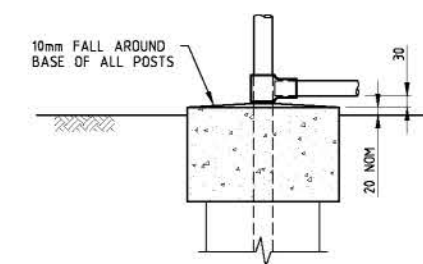


CHAIN-LINK FABRIC TIE-OFF DETAIL
N.T.S

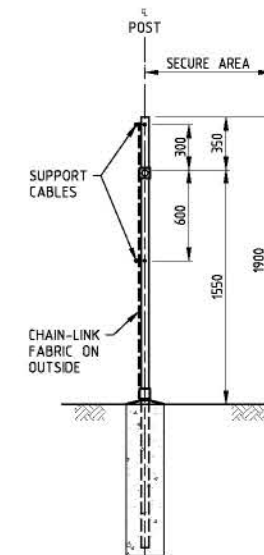


**TIE-OFF DETAIL AT CORNER
END OR STRAINER POSTS**
N.T.S

**TIE-OFF DETAIL AT
INTERMEDIATE POSTS**
N.T.S



MOWING STRIP
SCALE 1:10



TYPICAL SECTION
SCALE 1:25

NOTES:

- FOR ALL OTHER NOTES AND TABLES REFER TO STANDARD DRAWING STD-T0193.
- THIS DRAWING IS TO BE READ IN CONJUNCTION WITH STANDARD DRAWINGS STD-T0195 AND STD-T0196.

© 2017 Australian Rail Track Corporation Ltd.

Drawing standard in accordance with EGP-04-01 & EGP-04-02

Used on / Next higher assembly:

Scale:

A1 / A3
1:25 / 1:50

Filename:

Alternate DMS number:

Rev	Date	Revision Description
0	05/06/17	ISSUE FOR ARTC ACCEPTANCE

BD	SB	AD	CD	DO
Designed	Checked	Ind. Rev.	Approved	Accepted

Designing Company:



SMEC
LEVEL 1, 114 WELLSBOROUGH STREET
SOUTH BRISBANE QLD 4101
PHONE 07 3029 8600 FAX 07 3029 8650

Design Project Code: 3000193
Designed: B. DUNNE 17/03/17
Checked: S. BOWMAN 17/03/17
Ind. Rev. Company: A. DUNN
Ind. Rev. Name: A. DUNN
Ind. Review Signature: A. DUNN 05/06/17

Approved By: C. DAS GUPTA
C. DAS GUPTA
05/06/17
Approval Date: 06/07/17

ARTC ACCEPTANCE

Accepted By: D. OGUCHA
D. OGUCHA
Signed
Acceptance Date

ARTC

STD-T0194

TITLE
STANDARD CHAIN LINK
BOUNDARY FENCE

Sheet No.

Scale:

SHEET
SIZE
A1