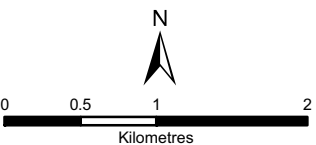
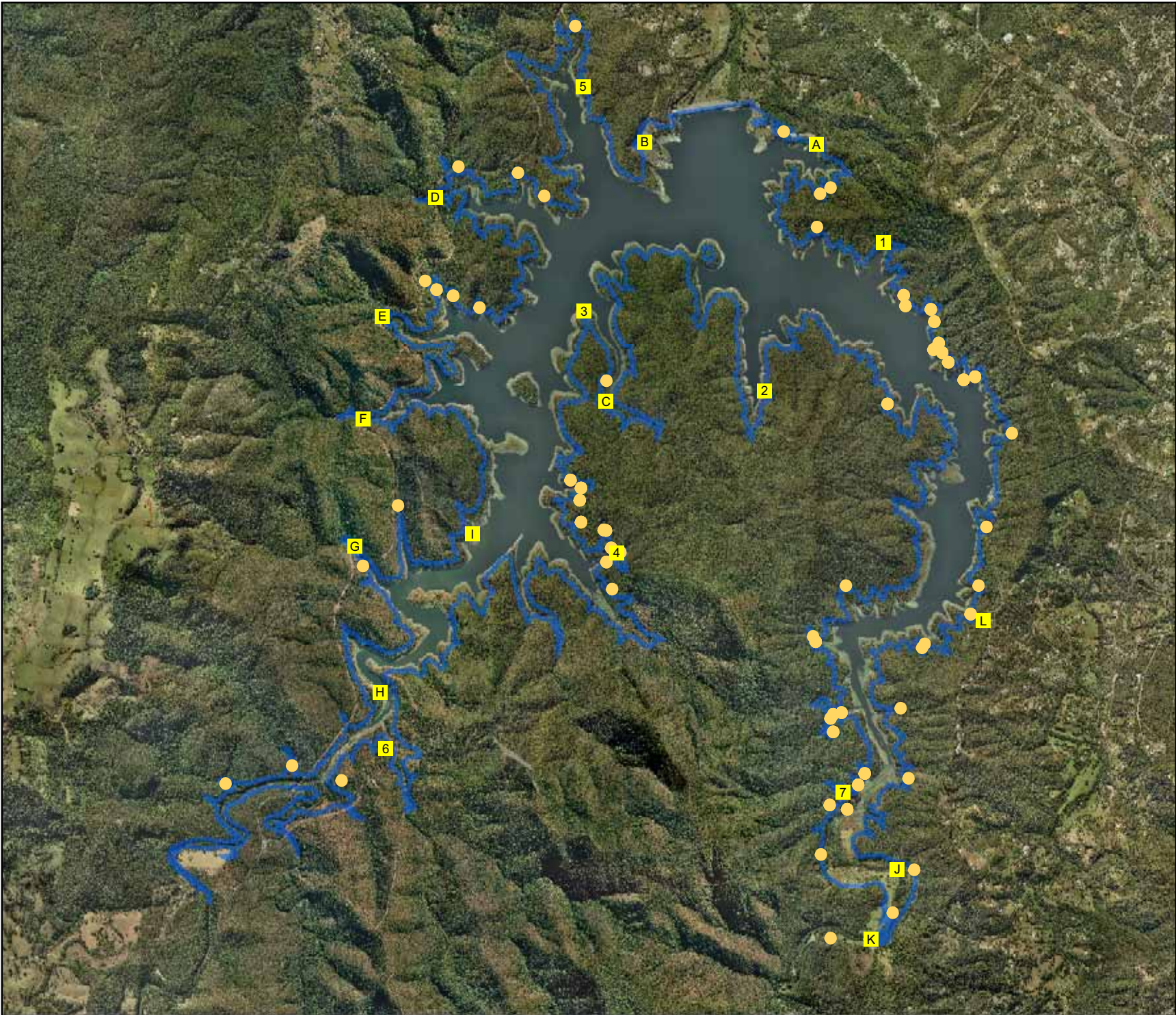


Appendix D Amended EIS Figures



Scale - 1:50,000
Projection: MGA Zone 56

Legend



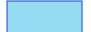

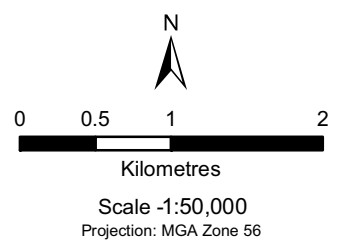
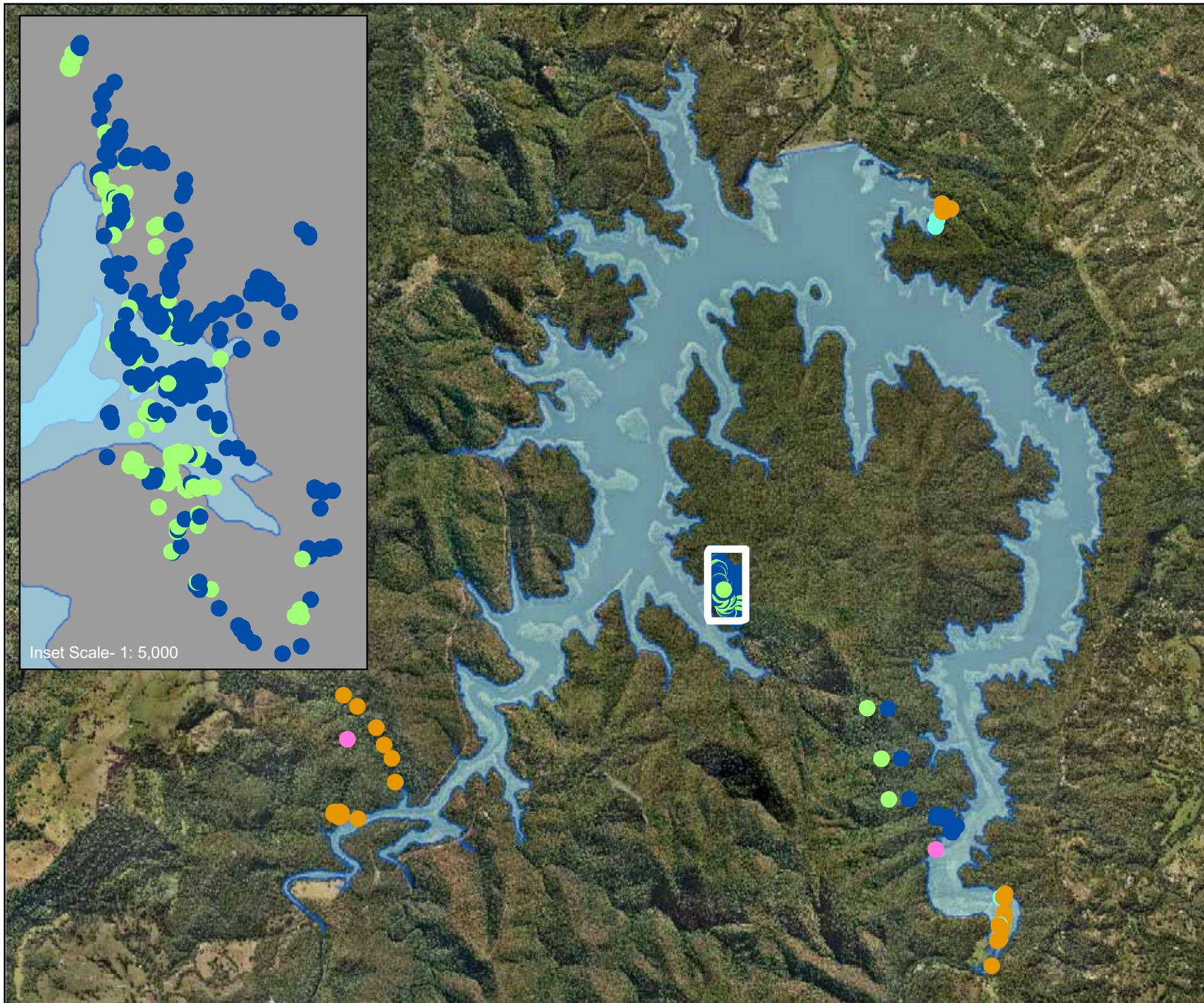
-  Fauna Survey Sites
-  Vegetation Survey Sites
-  Current FSL (82.2 m)
-  Proposed FSL (94.5m)

Figure 9C-1
Location of Flora &
Fauna Survey Sites
Hinze Dam Stage 3 EIS



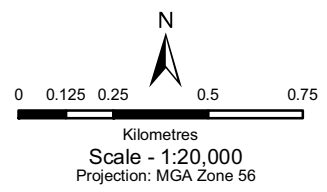
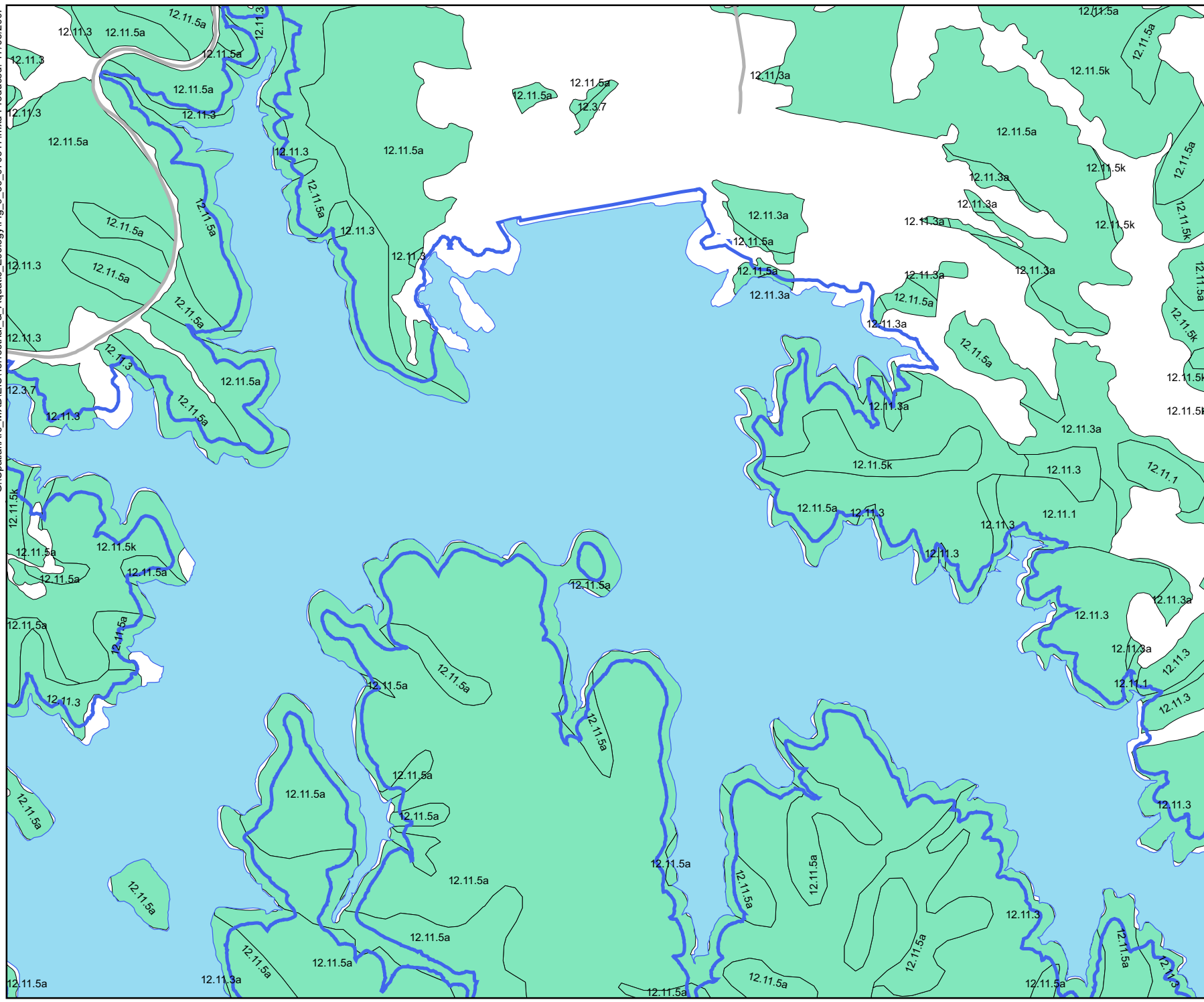
Legend

Species

- Randia moorei
- Owenia cepiodora
- Macadamia tetraphylla
- Macadamia integrifolia
- Plectranthus nitidus

Figure 9-6
Location of EPBC
Listed Flora
Hinze Dam Stage 3 EIS

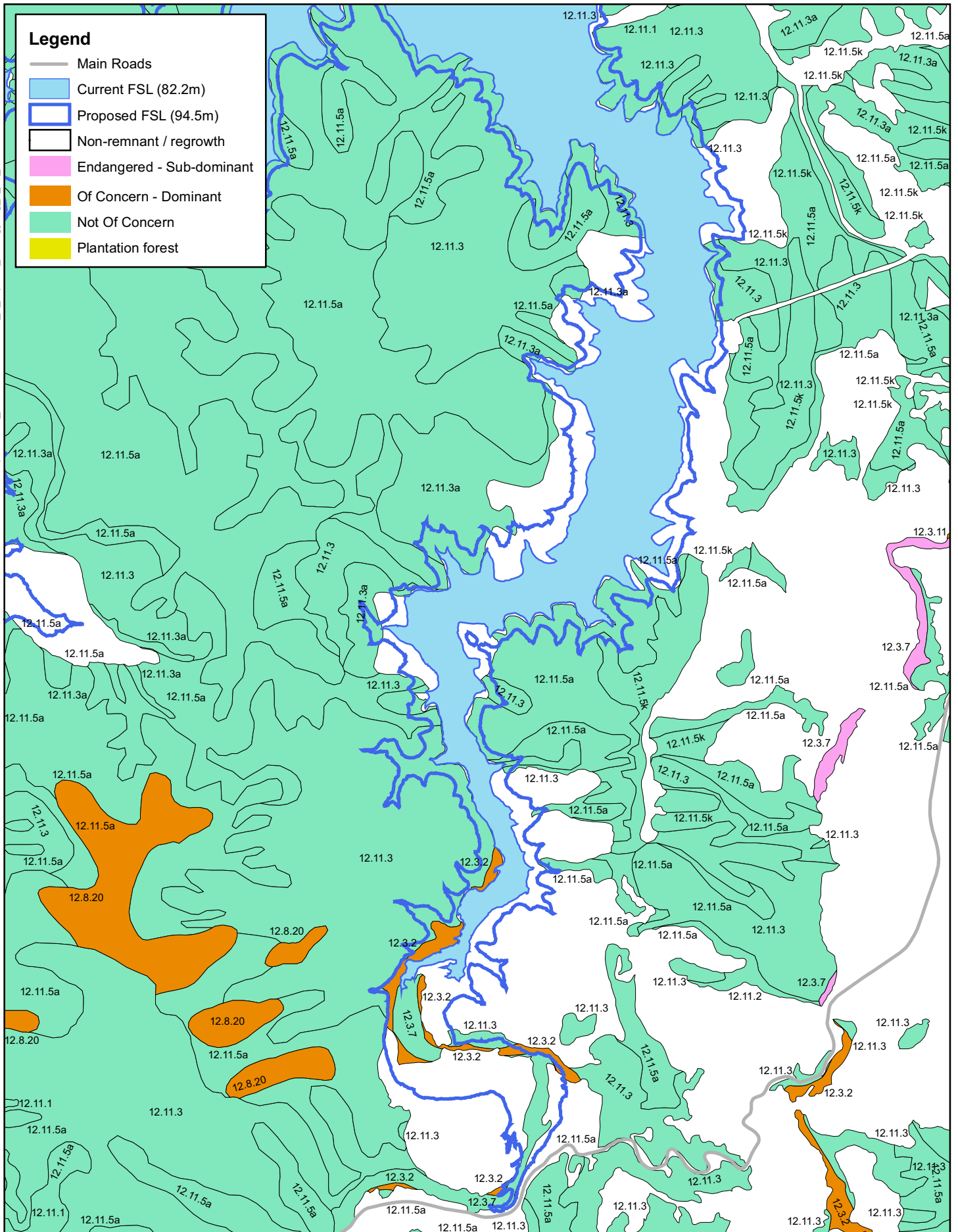
G:\Spatial\Arc_MXD\EIS\Terrestrial_ & Aquatic Ecology\Fig_9_3c_070517.mxd Produced: 17/05/2007



- Legend**
- Main Roads
 - Current FSL (82.2m)
 - Proposed FSL (94.5m)
 - Non-remnant / regrowth
 - Not Of Concern

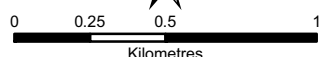
Figure 9-3c
Regional Ecosystems
North Section
Hinze Dam Stage 3 EIS

This figure must be read in conjunction with the data disclosure in Appendix H of this document



Legend

- Main Roads
- Current FSL (82.2m)
- Proposed FSL (94.5m)
- Non-remnant / regrowth
- Endangered - Sub-dominant
- Of Concern - Dominant
- Not Of Concern
- Plantation forest



Scale - 1:25,000
Projection: MGA Zone 56

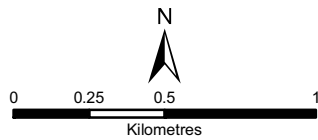
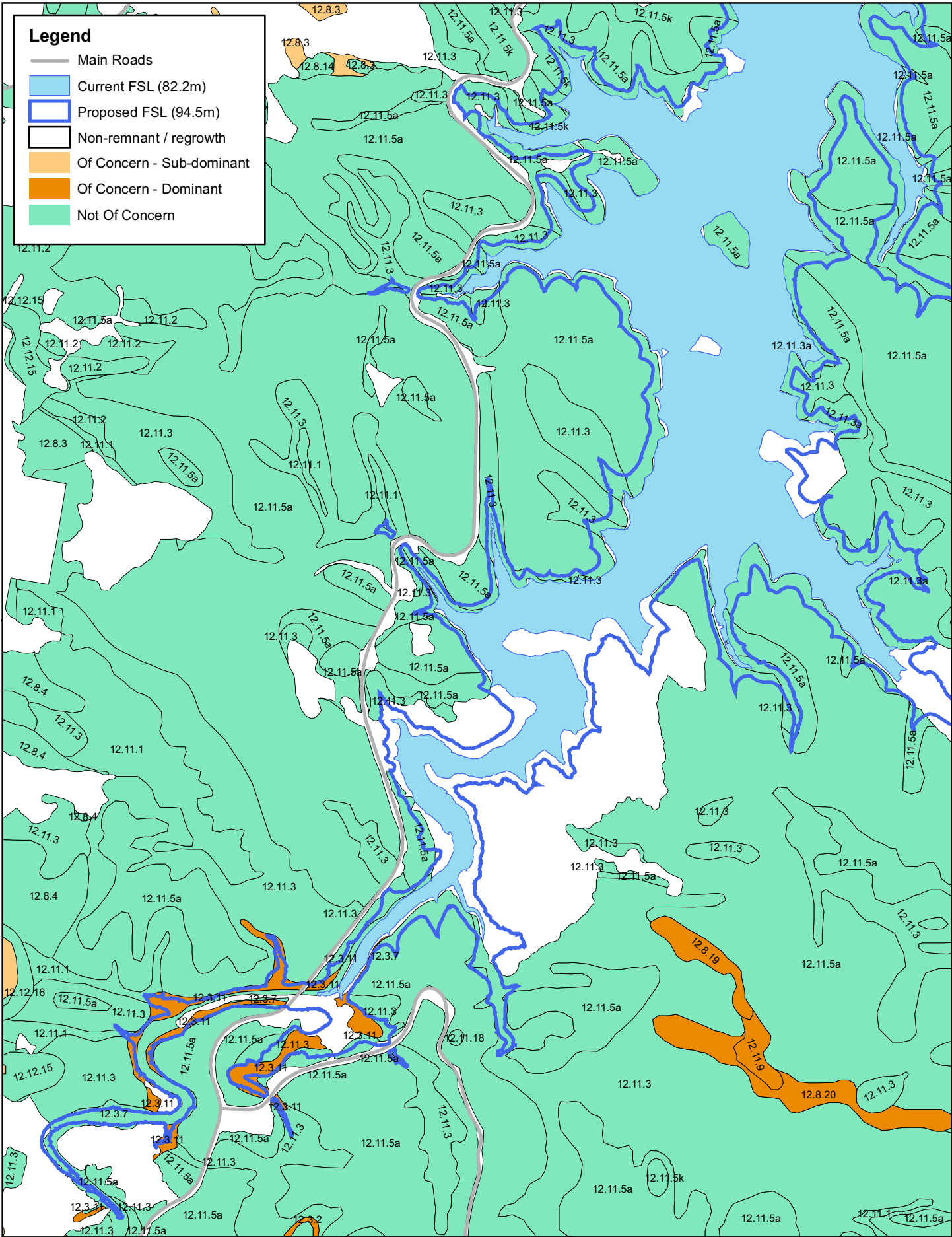
Figure 9-3b

Regional Ecosystems
East Arm

Hinze Dam Stage 3 EIS

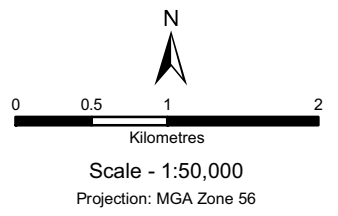
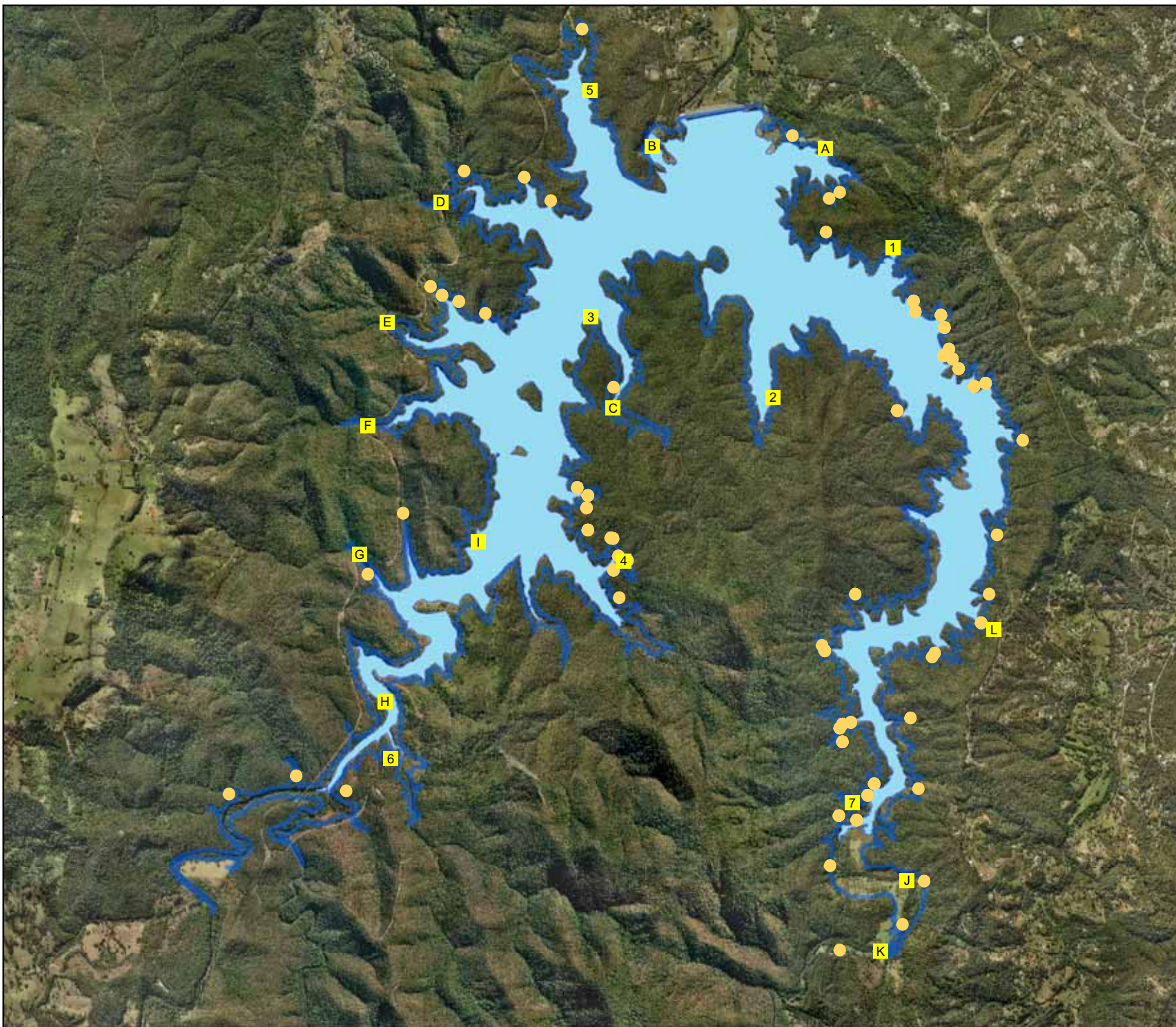


This figure must be read in conjunction with the data disclosure in Appendix H of this document



Scale - 1:25,000
Projection: MGA Zone 56

Figure 9-3a
Regional Ecosystems
West Arm
Hinze Dam Stage 3 EIS



Legend





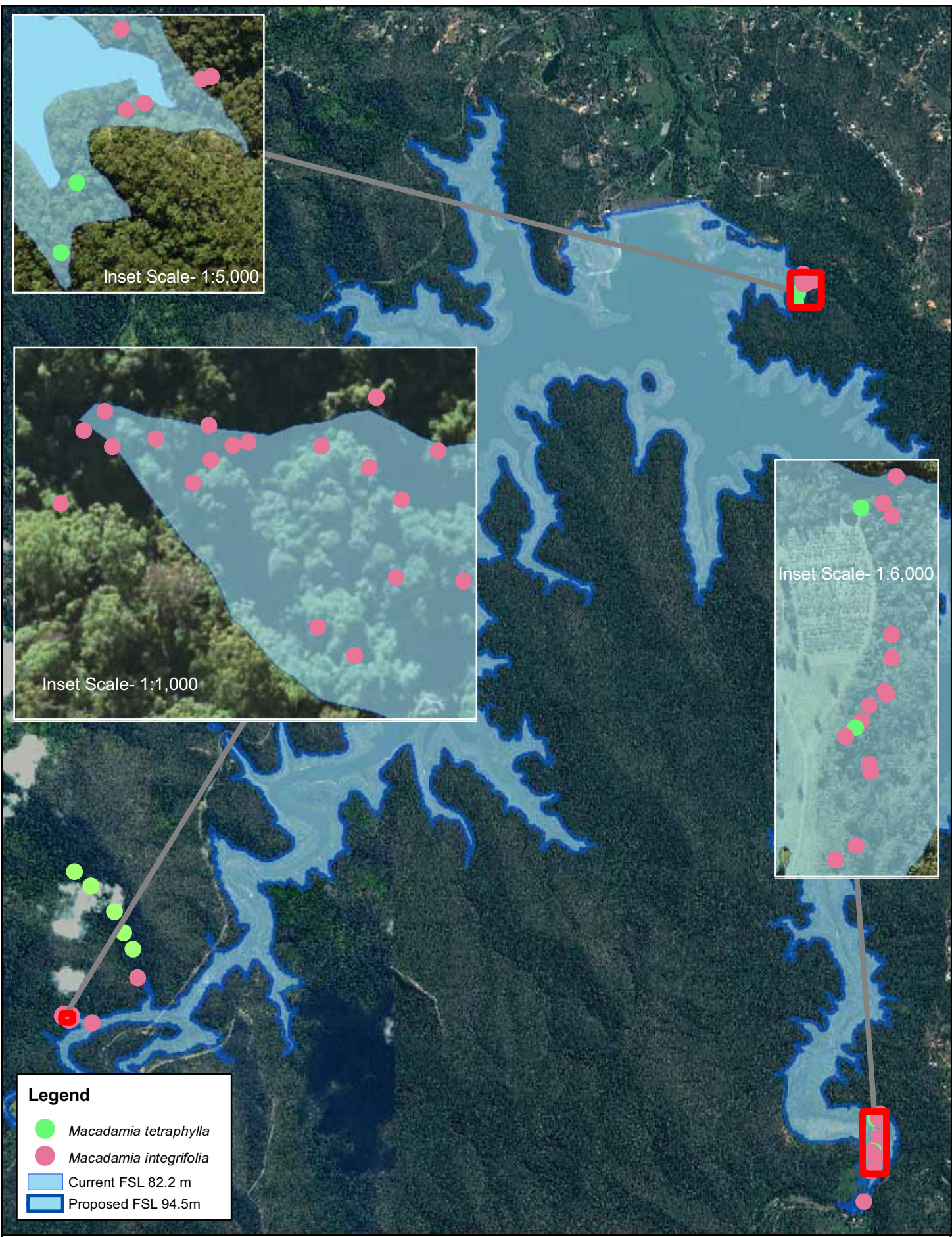
-  Fauna Survey Sites
-  Vegetation Survey Sites
-  Current FSL (82.2 m)
-  Proposed FSL (94.5m)

Figure 9-1
Location of Flora &
Fauna Survey Sites
Hinze Dam Stage 3 EIS



Legend

- Macadamia tetraphylla*
- Macadamia integrifolia*
- Current FSL 82.2 m
- Proposed FSL 94.5m



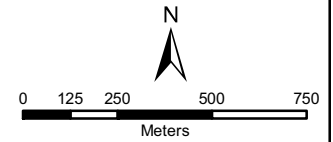
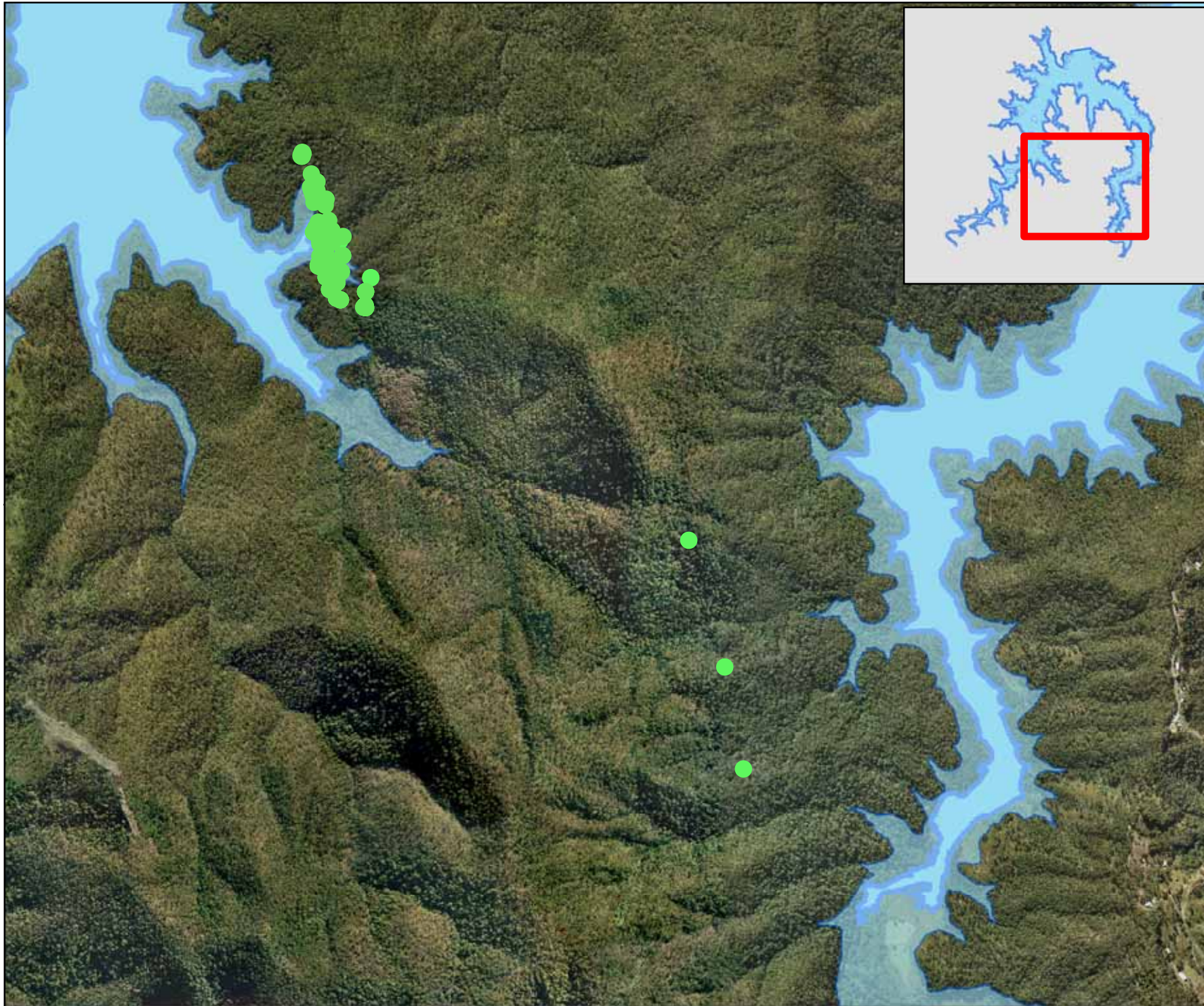
N

0 0.25 0.5 1 1.5

Kilometres

Scale -1:40,000
Projection: MGA Zone 56

Figure 4-6
Impact of FSL on
Macadamia sp.
Hinze Dam Stage 3 EIS



Scale - 1:3,500
Projection: MGA Zone 56

Legend

Species

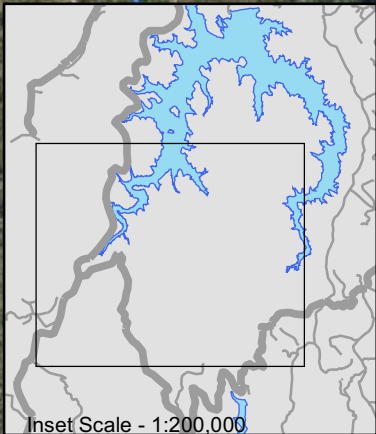
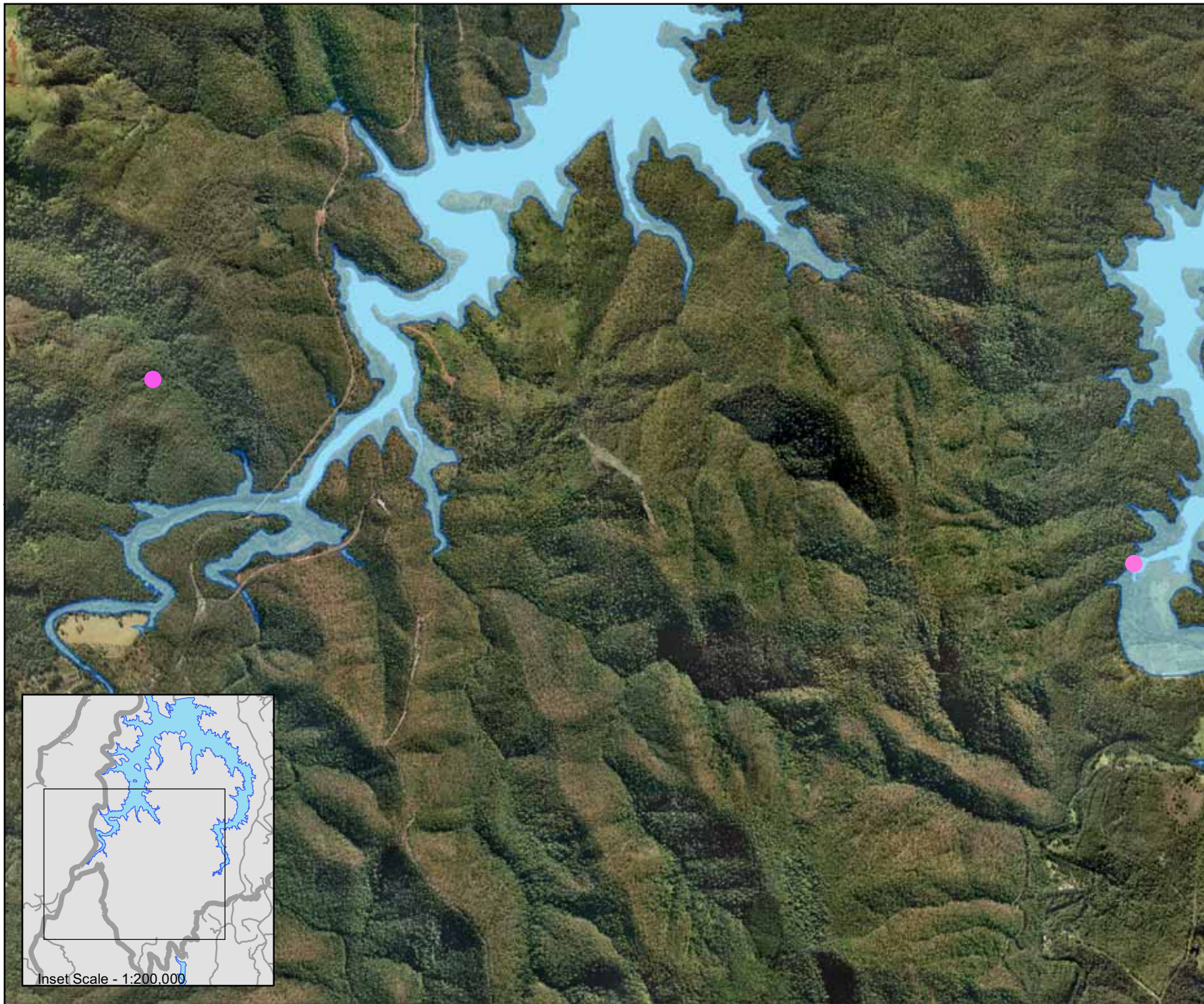
● *Owenia cepiodora*

■ Current FSL 82.2 m

■ Proposed FSL 94.5m

Figure 4-5
Impact of FSL on
Owenia cepiodora

Hinze Dam Stage 3 EIS



0 500
Metres

Scale - 1:2,000
Projection: MGA Zone 56

Legend


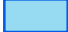

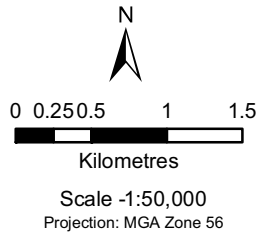
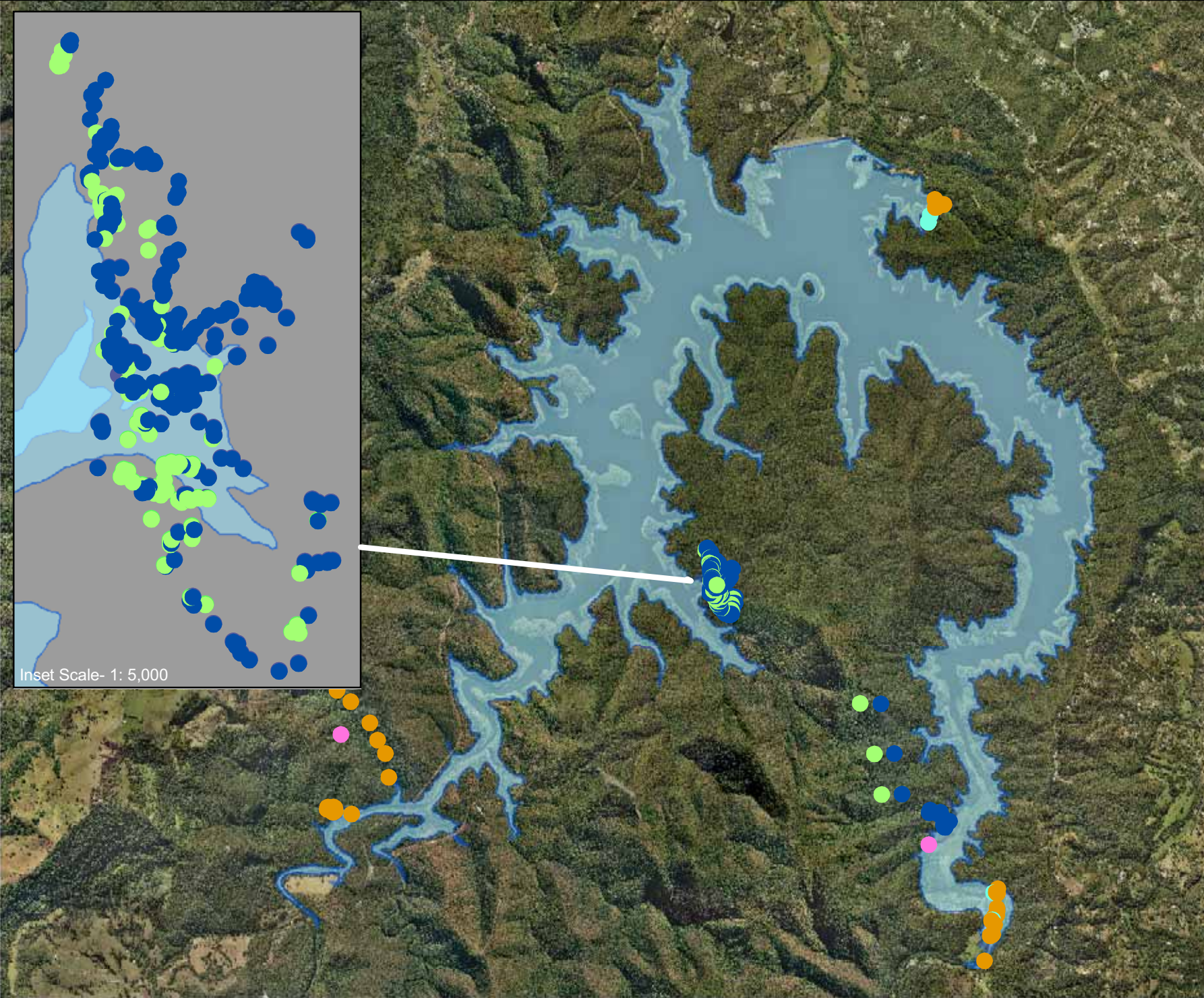
-  Plectranthus nitidus
-  Proposed FSL 94.5m
-  Current FSL 82.2 m

Figure 4-4
Impact of FSL on
Plectranthus nitidus
Hinze Dam Stage 3 EIS



Legend

Species

- *Randia moorei*
- *Owenia cepiodora*
- *Macadamia tetraphylla*
- *Macadamia integrifolia*
- *Plectranthus nitidus*

Inset Scale- 1: 5,000

Figure 9C-2
Location of EPBC
Listed Flora
Hinze Dam Stage 3 EIS