





Report

GLNG EIS Supplement

Gas Transmission Pipeline, Contaminated Land

NOVEMBER 2009

Prepared for
Santos
32 Turbot Street
Brisbane, Qld, 4000
42626443.53000

URS

Project Manager:

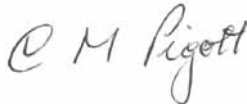


Chris Morrison
Associate Environmental
Geologist

URS Australia Pty Ltd

**Level 16, 240 Queen Street
Brisbane, QLD 4000
GPO Box 302, QLD 4001
Australia
T: 61 7 3243 2111
F: 61 7 3243 2199**

Project Director:



Chris Piggot
Senior Principal

Author:



Janelle Kuter
Environmental
Geophysicist

Reviewer:



Andrea Rutley
Principal Geophysicist

Date:

November

Reference:

42626443.53000/1/C

Status:

FINAL

© Document copyright of URS Australia Pty Limited.

The contents of this report are and remain the intellectual property of the addressee of this report and are not to be provided or disclosed to or used by third parties without the addressee's consent.

URS Australia and the addressee of this report accept no liability to third parties of any kind for any unauthorised use of the contents of this report and reserve their right to seek compensation for any such unauthorised use.

Document delivery

URS Australia provides this document in either printed format, electronic format or both. URS considers the printed version to be binding. The electronic format is provided for the client's convenience and URS requests that the client ensures the integrity of this electronic information is maintained. Storage of this electronic information should at a minimum comply with the requirements of the Commonwealth Electronic Transactions Act (ETA) 2000.

Where an electronic only version is provided to the client, a signed hard copy of this document is held on file by URS and a copy will be provided if requested.

Table of Contents

Executive Summary	v
1 Introduction	1
1.1 Purpose.....	1
1.2 Scope of Work.....	1
1.3 Legislative Framework	1
2 Methodology	2
2.1 Methodology.....	2
3 GLNG Gas Transmission Pipeline Site Information.....	4
3.1 Site Background	4
3.2 Title Information.....	4
3.3 Zoning Information	5
3.4 Current Land Use.....	5
4 Environmental Setting	6
4.1 Topography	6
4.2 Regional Geology	6
4.3 Surface Hydrology	6
4.4 Hydrogeology.....	6
5 Site History	7
5.1 DERM Priority Registers	7
5.2 Aerial Photography.....	7
5.3 Certificates of Title.....	10
6 Areas of Potential Concern	13
6.1 AOPC 1 Lot 2 on RP605812 (Callide Range Alternative Route).....	14
6.2 AOPC 2 Lot 5 on RP843128 (GLNG Gas Transmission Pipeline September 2009)	16
6.3 AOPC 3 Lot 4 on CTN406 CPIC (CICSDA Section)	18
6.4 AOPC 4 Lot 41 on DS290 (GLNG Gas Transmission Pipeline September 2009– CPIC (GSDA Section)).....	20
6.5 AOPC 5 Lot 401 on DT4026 (GLNG Gas Transmission Pipeline September 2009 – CPIC (GSDA Section)).....	22
References	24

7	Limitations	25
7.1	Phase 1 Report Limitation Statements	25
7.1.1	Conclusion and Recommendations.....	25
7.1.2	Mitigation	25
7.1.3	Limitations	26

Tables

Table 3-1	Areas of Potential Concern Identified from Tier 1 Review	4
Table 3-2	Overview of AOPC Land Title Information.....	4
Table 5-1	DERM Priority Register Search Results	7
Table 5-2	Historical Aerial Photography Review AOPC 1 Lot 2 on RP605812	7
Table 5-3	Historical Aerial Photography Review AOPC 2 Lot 5 on RP843128	8
Table 5-4	Historical Aerial Photography Review AOPC 3 Lot 4 on CTN406.....	8
Table 5-5	Historical Aerial Photography Review AOPC 4 Lot 41 on DS290	9
Table 5-6	Historical Aerial Photography Review AOPC 5 Lot 401 on DT4026	9
Table 5-7	Certificates of Title AOPC 1 Lot 2 RP605812.....	10
Table 5-8	Certificates of Title AOPC 2 Lot 5 on RP843128.....	10
Table 5-9	Certificates of Title AOPC 3 Lot 4 on CTN 406	10
Table 5-10	Certificates of Title AOPC 4 Lot 41 on DS290.....	11
Table 5-11	Certificates of Title AOPC 5 Lot 401 on DT4026.....	11

Plates

Plate 6-1	Aerial showing AOPC 1 Lot 2 on RP605812 and supplementary EIS route alternatives–	14
Plate 6-2	Aerial showing AOPC 2 Lot 5 on RP843128 and GLNG Gas Transmission Pipeline September 2009	16
Plate 6-3	Aerial showing AOPC 3 Lot 4 on CTN406 within the CPIC (CICSDA Section).....	18
Plate 6-4	Aerial showing AOPC 4 Lot 41 on DS290 and GLNG Gas Transmission Pipeline September 2009 – CPIC (GSDA Section)	20
Plate 6-5	Aerial showing AOPC 5 Lot 401 on DT4026 and GLNG Gas Transmission Pipeline September 2009 – CPIC (GSDA Section)	22

Figures

- Figure 1 Proposed Realigned Gas Transmission Pipeline
- Figure 2 Site AOPC 1 Area of Pot Concern
- Figure 3 Site AOPC 2 Area of Pot Concern
- Figure 4 Site AOPC 3 Area of Pot Concern
- Figure 5 Site AOPC 4 Area of Pot Concern
- Figure 6 Site AOPC 5 Area of Pot Concern

Appendices

- Appendix A Environmental Management Register and Contaminated Land Register - Search Results
- Appendix B Certificate of Title - Search Results

Abbreviations

Abbreviation	Description
AOPC	Areas of Potential Concern
AST	Above Ground Storage Tank
CICSDA	Callide Infrastructure Corridor State Development Area
CLR	Contaminated Land Register
COPC	Chemical of Potential Concern
DERM	Department of Environment and Resource Management
DoE	Department of Environment
EIS	Environment Impact Statement
EMR	Environmental Management Register
GLNG	Gladstone Liquefied Natural Gas
GSDA	Gladstone State Development Area
LNG	Liquefied Natural Gas
PSI	Preliminary Site Investigation
TDI	Total Dissolved Ions
URS	URS Australia Pty Ltd

Executive Summary

Introduction and Background

URS Australia Pty Ltd (URS) was commissioned by Santos to undertake a supplementary Preliminary Site Investigation (PSI) along alternative route options for the gas transmission pipeline (GTP) identified by Santos and the Queensland government since completion of the EIS.

The EIS GTP pipeline route was proposed by Santos in March 2009 between the CSG fields and the LNG facility on Curtis Island, including the northern pipeline deviation (GSDA), and was assessed as part of the EIS. Supplementary EIS Route Alternatives (GLNG GTP (September 2009)).

The GLNG GTP (September 2009) is the route alternatives identified by Santos since March 2009 (as a single alignment) as the result of further engineering, geotechnical, environmental and other investigations. Santos is continuing to consider the EIS GTP (March 2009), the CPIC (CICSDA Section) Route, the CPIC (GSDA Section) Route, and the Callide Range Alternative Route (see Figure 1). The final GTP route corridor will be determined once the final engineering design for the pipeline has been developed and is subject to Santos and/or the government obtaining the necessary underlying land interest and negotiation of access terms and conditions with respect to the CPIC Route.

The objective of the PSI was to examine the areas of supplementary route alternatives for the GTP corridor that lie outside of the EIS GTP (March 2009) Route for pre-existing land contamination as well as project related contamination impacts during the construction and operational phases of the project.

The PSI scope of work for each alternative route option included a desktop review of land history to identify areas of potential concern. Searches/tasks undertaken included a review of:

- Aerial photographs;
- Current and historical titles; and
- Department of Environment and Resource Management (DERM) Environmental Management Register (EMR) and Contaminated Land Register (CLR).

Five areas of potential concern (AOPC) were identified with regard to the revised GLNG Project:

- AOPC 1 - Above ground storage tanks (possible fuel or chemical storage), historical use as stockyard area;
- AOPC 2 – Stockyard (potential pesticide use/storage), and potential waste dump;
- AOPC 3 – Stockyard (potential pesticide use/storage);
- AOPC 4 – Stockyard (potential pesticide use/storage) and close proximity to farmyard infrastructure; and
- AOPC 5 – Stockyard (potential pesticide use/storage).

EMR, CLR, Certificate of Title searches as well as historical aerial photo studies have been carried out for these five sites. None of the AOPCs were listed on the EMR or CLR.

The stockyard sites potentially present the highest risk, in particular AOPC 4, where the alternative routes are in close proximity to the existing stockyards and farmyard infrastructure. In general, stockyard sites have the potential to contain a stock dip or a spray race, where pesticide use may have taken place. In summary, these reviews have identified some areas with potential for impact which will require further assessment as part of the pipeline EMP.

Executive Summary

Mitigation

The current GLNG GTP (September 2009) alignment does not pass directly through any identified AOPC. In those areas where the pipeline will be proximal to AOPC, a qualified environmental scientist will be on site (as per the Pipeline Environmental Management Plan), to identify any evidence of land contamination associated with the AOPC and undertake appropriate mitigation measures.

Introduction

1.1 Purpose

URS Australia Pty Ltd (URS) was commissioned by Santos to undertake a supplementary Preliminary Site Investigation (PSI) along alternative route options for the gas transmission pipeline (GTP) identified by Santos and the Queensland government since completion of the EIS, illustrated in Figure 1.

The EIS GTP route was proposed by Santos in March 2009 between the CSG fields and the LNG facility on Curtis Island, including the northern pipeline deviation (GSDA), and was assessed as part of the EIS. Supplementary EIS Route Alternatives (GLNG GTP (September 2009)) were identified by Santos since March 2009 as the result of further engineering, geotechnical, environmental and other investigations. The final GTP route corridor will be determined once the final engineering design for the pipeline has been developed and is subject to Santos and/or the government obtaining the necessary underlying land interest and negotiation of access terms and conditions with respect to the CPIC Route.

The PSI investigated the likelihood for potentially contaminated land to be present within each of the route options, and if so, whether it has the potential to adversely affect the project during construction or operational phases.

1.2 Scope of Work

The scope of work undertaken by URS as part of the PSI consisted of a desktop review and included the following:

- The review of historical data, including a review of aerial photographs and current and historical title searches;
- A review of geological, hydrogeological, and topographical maps to examine physical setting and proximity to sensitive receptors; and
- Searches of the Department of Environment and Resource Management (DERM) Environmental Management Register (EMR) and the Contaminated Land Register (CLR).

1.3 Legislative Framework

The assessment and management of contaminated or potentially contaminated land is governed by the *Environmental Protection Act 1994* (EP Act) administered by the Department of Environment and Resource Management (DERM) formerly, the Queensland Environment Protection Agency (EPA). Assessment is also guided by Department of Environment (DoE) *Draft Guidelines for the Assessment & Management of Contaminated Land in Queensland* dated May 1998 (DERM, formerly DoE, 1998) which outlines assessment criteria (environmental investigation levels) and the Tiered assessment approach (Section 2.1).

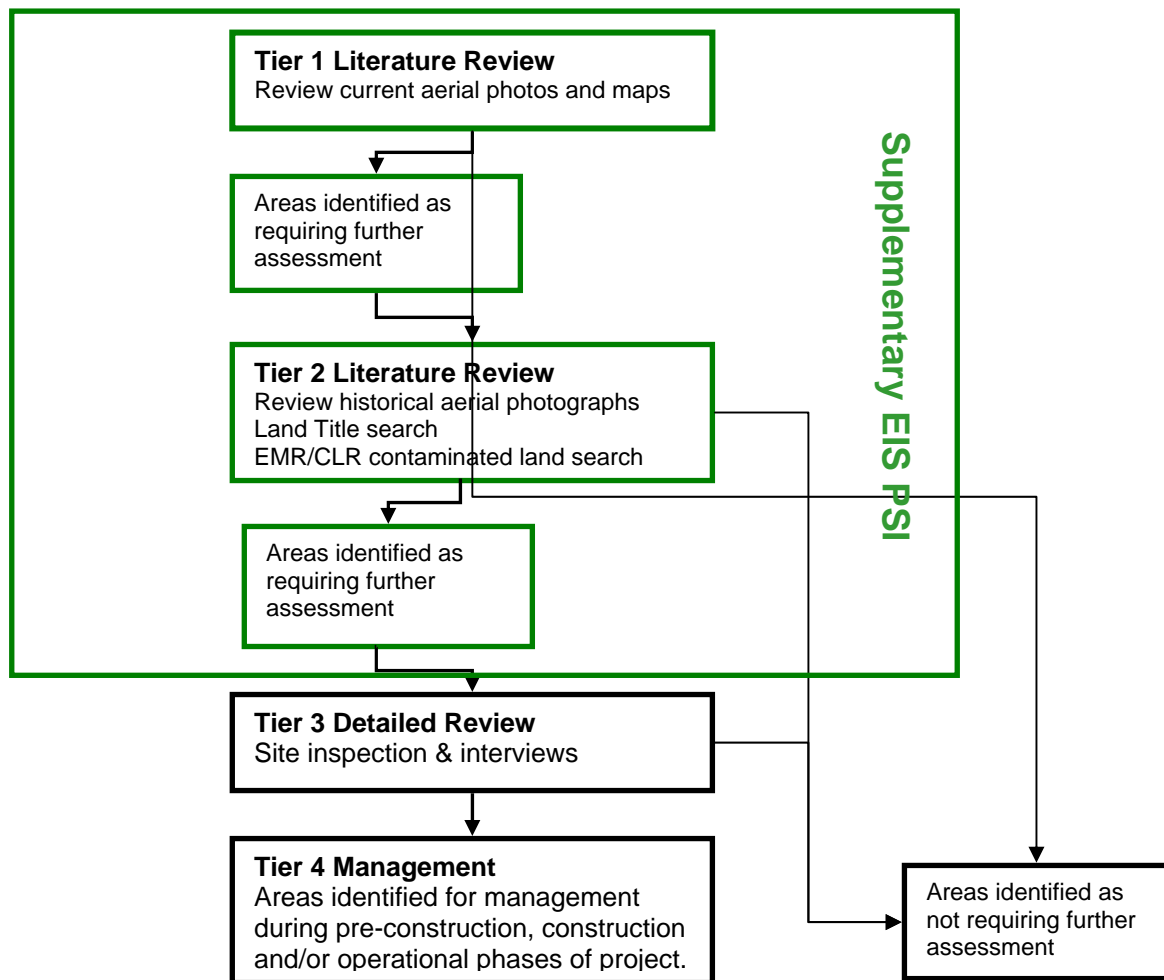
The EP Act includes a list of all 'Notifiable Activities' in Schedule 2 which have a high potential for contamination impacts which include, but are not limited to, cattle dips, aerial spraying, landfills, chemical manufacturing or formulation, chemical storage, or mineral processing. Associated with this list is the DERM registers of contaminated sites in Queensland, the Environmental Management Register (EMR), and the Contaminated Land Register (CLR). The EP Act also sets the obligation for owners and occupiers of land to inform DERM of any parcel/s of land that have been used for Notifiable Activity/s or contaminated by a hazardous substance.

Methodology

2.1 Methodology

The PSI was undertaken in accordance with contaminated site assessment and management guidance (DoE, 1998; NEPC, 1999) and the Department of Environment and Resource Management’s *Draft Guidelines for the Assessment and Management of Contaminated Land in Queensland*” (1998).

The PSI followed an iterative (4 Tier) approach due to the large project area. The approach is illustrated in the following flowchart.



Tier 1 and 2 reviews included literature-based appraisals of available information that might lead to the identification of potentially contaminated land at the project area including storage and/or spills of chemicals, fuels, associated water, and wastes.

The Tier 1 review included an appraisal of Santos supplied aerial photographs taken in 2008 of the GLNG GTP (September 2009) Route. The GLNG GTP (September 2009) alignment and alternatives within the aerial photograph were reviewed at a scale sufficient to enable features in the landscape considered areas of potential concern (AOPC) to be identified. Such areas have the potential to be

2 Methodology

contaminated on the basis of infrastructure (e.g. chemical storage tanks, stock dip sites, industrial facilities) and/or potentially contaminating activities that may have occurred.

Following a Tier 1 literature review, a Tier 2 literature review was conducted on AOPC identified within the GLNG GTP (September 2009). The resulting AOPC identified were investigated through the review of historical aerial photographs of the location, the contaminated land registers (EMR and CLR), and land titles (current and historical). If required, AOPC identified could be further investigated at a Tier 3 level.

A Tier 3 review of AOPC would include a field-based appraisal of available information on site operations, infrastructure and environmental conditions.

This level of review would require, where practical, sampling and analysis of potentially contaminated material, and allow development of a conceptual risk site model to characterise potential contamination sources.

Due to the large geographical area of the gas transmission pipeline corridor, the complete tiered approach to the full length of the pipeline was not practicable. A Tier 3 review may need to be conducted at site specific locations to highlight AOPC during the pre-construction phase once the final gas transmission pipeline route is determined.

GLNG Gas Transmission Pipeline Site Information

Given the multiple land parcels traversed, the GLNG GTP (September 2009) Route and the Callide Range Alternative Route were investigated using the same tiered approach as for the EIS. Current aerial photographs were reviewed for the GLNG GTP (September 2009) and supplementary EIS alternative routes where they deviated from the EIS GTP (March 2009) route and areas of potential concern (AOPC) were identified. A Tier 2 review was then conducted for each of the identified AOPC land parcels. No field investigations were undertaken.

3.1 Site Background

The proposed 435 km gas transmission pipeline originates from the Fairview Gas Fields, travels north through Arcadia Valley and enters the Gladstone area, terminating at the LNG facility on Curtis Island.

The Tier 1 review of Santos supplied aerial photography (EQ_Frvw_Gldstn_Aerial_2008) identified five AOPC along the gas transmission pipeline route with the potential to be contaminated on the basis of infrastructure.

A Tier 2 literature review was conducted on the five AOPC. These AOPC were further investigated through the conduct of a review of historical aerial photographs of the location, government registers (EMR and CLR), and land titles (current and historical). The AOPC along the gas transmission pipeline are summarised in Table 3.1.

Table 3-1 Areas of Potential Concern Identified from Tier 1 Review

AOPC	Long	Lat	Description	Lot & Plan
1	150.650	-24.1651	Above Ground Storage Tanks within study area. Buildings and stockyard located outside study area.	Lot 2 RP605812
2	150.693	-24.1924	Stockyard.	Lot 5 RP843128
3	150.788	-24.1065	Stockyard.	Lot 4 CTN406
4	151.108	-23.7705	Stockyard and farmyard infrastructure.	Lot 41 DS290
5	151.135	-23.7681	Stockyard.	Lot 401 DT4026

3.2 Title Information

Due to the large distance and multiple lot and plans that the pipeline corridor passes through, each individual lot and plan title was not recorded for this report. Further details were obtained for the five AOPC land parcels identified during the Tier 1 review. Additional title information can be found in Section 5.3 of this report. A summary of the land parcels is provided below in Table 3.2:

Table 3-2 Overview of AOPC Land Title Information

AOPC	Land Title Information	Owner/Registered Proprietor
1	Lot 2 on RP605812	Brian and Jayne Kerim; County: Raglan; Parish: Dumgree; Local Government: Banana
2	Lot 5 on RP843128	Walter and Deborah Ferry; County: Raglan; Parish: Dumgree; Local Government: Banana
3	Lot 4 on CTN406	Dennis Quinn; County: Clinton; Parish: Gayfield; Local Government: Gladstone
4	Lot 41 on DS290	Queensland Energy Resources Ltd; County: Deas Thompson; Parish: Targinie; Local Government: Gladstone

3 GLNG Gas Transmission Pipeline Site Information

AOPC	Land Title Information	Owner/Registered Proprietor
5	Lot 401 on DT4026	Craig and Brian Wells; County: Deas Thompson; Parish: Targinie; Local Government: Gladstone

3.3 Zoning Information

The pipeline traverses numerous councils, shires and parishes along the length of its 435 km route. Whilst detailed zoning has not been recorded it is noted that the pipeline crosses residential, industrial, commercial and rural zones.

3.4 Current Land Use

The GLNG GTP (September 2009) passes through rural grazing, pasture, residential and farmland land uses and as the corridor nears Gladstone, commercial, industrial and higher density residential areas. The pipeline corridor also passes across "The Narrows" before terminating on Curtis Island which comprises mostly of rural land uses.

Environmental Setting

4.1 Topography

The gas transmission pipeline passes through varied terrain from its commencement at the plateau of the Great Dividing Range northeast of Injune. The topography varies as it passes through floodplains, valleys and ranges as it approaches the estuarine tidal marine flats of the coastline. The pipeline corridor then passes through the marine environment of the Narrows to Curtis Island where the topography varies from tidal flats to hilly and undulating plains.

More detailed description of the topography of the GLNG GTP (September 2009) alignment is provided in Attachment E1.

4.2 Regional Geology

The geology of the GTP corridor comprises many different geological units and formations across the New England Fold Belt of Eastern Australia and is detailed in Attachment E1.

4.3 Surface Hydrology

The surface water courses proximate to the pipeline corridor include lakes, rivers, creeks, reservoirs, springs, waterholes, canals, dams, swamps and marshes before crossing 'The Narrows' onto Curtis Island. The major rivers within the pipeline corridor include Calliope River, Dawson River, and Brown River. Other tributaries within the study area include Bell, Kroombit, Castel, Banana, Kianga, Callide, Mimosa, Conciliation, Zamia, Clematis, Spring and Baffle Creeks. Detailed information on the surface hydrology associated with the revised alignment of the pipeline is described in detail in Attachment E4.

4.4 Hydrogeology

The shallow aquifers along the pipeline alignment comprise mostly of alluvium consisting of silt, sand, clay and gravel. Groundwater is recognised as being used for domestic and stock watering purposes. Some small scale irrigation may also occur from the shallow alluvial aquifers.

More detailed information on the Hydrogeology can be found in EIS Section 7.6 and EIS Appendix P.

Site History

5.1 DERM Priority Registers

A search of the DERM registers was conducted for AOPCs identified along the gas transmission pipeline corridor. None of the parcels were identified on either the EMR or the CLR (see Table 5-1) Copies of the search results are in Appendix A.

Table 5-1 DERM Priority Register Search Results

AOPC	Lot and Plan	EMR	CLR
1	Lot 2 on RP605812	Not Listed	Not Listed
2	Lot 5 on RP843128	Not Listed	Not Listed
3	Lot 4 on CTN406	Not Listed	Not Listed
4	Lot 41 on DS290	Not Listed	Not Listed
5	Lot 401 on DT4026	Not Listed	Not Listed

5.2 Aerial Photography

A review of historical aerial photographs for each land parcel identified as an AOPC was undertaken to assess land use changes. Results of the review are summarised in Table 5-2 to Table 5-6 for each land parcel identified.

Table 5-2 Historical Aerial Photography Review AOPC 1 Lot 2 on RP605812

Date	Area-Photo No	Scale	Run No.	Site Description	Surrounding Area
27/05/1965	Rannes QAP1448-21	1:25,000 ft	3	Two buildings present towards south of site. Stockyards present in location of present day potential ASTs	Heavily vegetated north of site, and cleared to the south. Watercourse present to east and south of site,
20/06/1984	Biloela QAP4364-19	1:25,000	5	Roadway passing property more visible. Two additional tanks present close to buildings. Stockyard still present.	No significant change from previous aerial.
01/06/1999	Biloela West QAP5750-114	1:25,000	5	Additional building present to south close to large tree. Stockyard no longer present, potential ASTs are now evident in this location.	Roadways more visible/pronounced.
08/07/2004	Biloela QAP6046-169	1:25,000	4	Central building no longer present. Potential ASTs evident close to present day location.	No significant change from previous aerial.

5 Site History

Table 5-3 Historical Aerial Photography Review AOPC 2 Lot 5 on RP843128

Date	Area-Photo No	Scale	Run No.	Site Description	Surrounding Area
27/05/1965	Rannes QAP1448-21	1:25,000 ft	3	Site is partially cleared of vegetation. No infrastructure present. Track runs east to west across north of site.	Partially cleared to north and south of site, dense vegetation to north. Potential drainage channels to west of site.
23/06/1984	Biloela QAP4635-239	1:25,000	6	Site remains cleared, additional earthworks has occurred west of road. This cleared area is a potential storage facility.	No significant change from previous aerial.
01/06/1999	Biloela West QAP5750-83	1:25,000	6	Main building visible, with two out buildings to the east. Additional shed/building present to south of main building. Potential waste dump in this area and potential storage area to east, near roadway. Tracks more evident on site.	No significant change from previous aerial.
08/07/2004	Biloela QAP6046-169	1:25,000	4	Out buildings close to main building, and storage area close to road no longer present. Stockyard present.	No significant change from previous aerial.

Table 5-4 Historical Aerial Photography Review AOPC 3 Lot 4 on CTN406

Date	Area-Photo No	Scale	Run No.	Site Description	Surrounding Area
28/07/1959	Dumgree QAP932-54	1:12,000 ft	4	Site is cleared either side of heavily vegetated ephemeral watercourse, with visible tracks east and south of site.	The area surrounding the site is moderately vegetated near the ephemeral watercourse and sparsely vegetated elsewhere. Tracks are visible. North west of site appears to be a flood plain
27/05/1965	Dumgree QAP1448 – 65	1:25,000	2	Site remains cleared either side of ephemeral watercourse. Shed and stockyard present.	No significant change from previous aerial.
02/09/1996	Biloela QAP5452-75	1:25,000	4	Some vegetation regrowth visible west of ephemeral watercourse. Additional tracks and turning areas present.	Watercourses visible to north east of site. Tracks more developed.
08/07/2004	Biloela QAP6064-134	1:40,000	2	Tracks into site less evident, stockyard still present, potentially unused.	No significant change from previous aerial.

5 Site History

Table 5-5 Historical Aerial Photography Review AOPC 4 Lot 41 on DS290

Date	Area-Photo No	Scale	Run No.	Site Description	Surrounding Area
26/07/1959	Gladstone QAP925-34	1:12,000 ft	1	Buildings present with cleared land to the north east and south of buildings. Additional shed/building present near present day stockyard.	Cleared land to north of buildings, close to tributary to Calliope anabranch. Additional cleared land to south east of site.
21/07/1970	Gladstone QAP2093-38	1:47,900	1	Stockyard area present close to shed/building south of tributary.	Easement/clearing from site to north west. Clearing on west of roadway.
11/07/1979	Gladstone QAP3064-8562	1:25,000	8	Stockyard shed increased in size. Stockyard more defined. Less vegetation than previous aerial.	Less vegetation and more buildings and tracks present.
28/09/1989	Gladstone QAP4831-87	1:25,000	8	No significant change from previous aerial.	Land east of highway utilised for orchards, additional buildings and tracks present.
02/05/1999	Gladstone QAP5719-188	1:25,000	8	No significant change from previous aerial.	No significant change from previous aerial.

Table 5-6 Historical Aerial Photography Review AOPC 5 Lot 401 on DT4026

Date	Area-Photo No	Scale	Run No.	Site Description	Surrounding Area
26/07/1959	Gladstone QAP925-34	1:12,000ft	1	Small clearing present at site.	Small patches of clear land visible throughout moderately vegetated surrounds. Ephemeral watercourse and small dam to north of site.
21/07/1970	Gladstone QAP2093-38	1:47,900	1	Clearing at site extended in all directions.	Additional clearings visible.
11/07/1979	Gladstone QAP3064-8562	1:25,000	8	Stockyard present at site, some vegetation regrowth visible.	Vegetation regrowth visible in the surrounding areas.
28/09/1989	Gladstone QAP4831-87	1:25,000	8	Additional regrowth visible in aerial photo, stockyard area less defined.	Vegetation regrowth continued in surrounding areas.
02/05/1999	Gladstone QAP5719-188	1:25,000	8	Less vegetation on site. Stockyard visible, with cleared area surrounding it.	Clearing of vegetation in areas surrounding site has occurred.

5 Site History

5.3 Certificates of Title

A search of current and historical titles of the site was undertaken for each land parcel identified as an AOPC using DERM databases. A summary of titles for each land parcel are found in Table 5-7 to Table 5-11. Copies of each certificate of title can be found in Appendix B.

Table 5-7 Certificates of Title AOPC 1 Lot 2 RP605812

Certificate of Title	Land Description	Proprietor	Date of Ownership
Current Title 30233056	Lot 2 on RP605812	Brian and Jayne Kerim	14/01/1998
Historical Title 30233056	Lot 2 on RP605812	Ian and Suzanne Grant	12/03/1992
Historical Title 30233056	Lot 2 on RP605812	Clifford Price and Robyn Price	22/11/1988
Historical Title 30233056	Lot 2 on RP605812	Kenneth O'Neill and Peter Roche	22/11/1988
Historical Title 30233056	Lot 2 on RP605812	Hans Jensen	09/01/1986
Historical Title 30233056	Subdivision 2 of Portion 329	Hans Jensen	04/08/1982
Historical Title 30233056	Subdivision 2 of Portion 329	Allan Campbell	27/11/1978
Historical Title 30233056	Subdivision 2 of Portion 329	Catherine and Allan Campbell	27/11/1978
Historical Title 30233056	Subdivision 2 of Portion 329	Leslie Campbell	06/06/1951

Table 5-8 Certificates of Title AOPC 2 Lot 5 on RP843128

Certificate of Title	Land Description	Proprietor	Date of Ownership
Current Title 30652084	Lot 5 on RP843128	Walter and Deborah Ferry	22/09/1994
Historical Title 30647024	Lots 1-4 on RP843125, Lots 7-9 on RP843126, Lots 10 on RP843127, Lots 5-6 on RP843128	Edward and Janice Turner	19/10/1993
Historical Title 30647024	Lot 21 on RN1461	Edward and Janice Turner	28/09/1993
Historical Title 30647024	Deed of Grant	Ian, Doreen and Russell Wells	19/08/1993

Table 5-9 Certificates of Title AOPC 3 Lot 4 on CTN 406

Certificate of Title	Land Description	Proprietor	Date of Ownership
Current Title 30637114	Lot 4 on CTN406	Dennis Quinn	03/01/1997
Historical Title 30378078	Lot 4 on CTN406	Ian Galletly	24/12/1992

5 Site History

Certificate of Title	Land Description	Proprietor	Date of Ownership
Historical Title 30378078	Lot 4 on CTN406	Neil, Lorena and Ian Galletly	06/06/1986
Historical Title 30378078	Portion 4 on CTN406	Neil, Lorena and Ian Galletly	15/11/1974
Historical Title 30378078	Portion 4 on CTN406	Neil and Lorena Galletly	28/02/1972
Historical Title 30378079	Lot 4 on CTN406	Ian Galletly	24/12/1992
Historical Title 30378079	Lot 4 on CTN406	James Galletly	06/06/1986
Historical Title 30378079	Portion 4 on CTN406	James Galletly	28/02/1972
Historical Title 30317200	Portion 4 on CTN406	Neil, Lorna, James Galletly	08/02/1972
Historical Title 30317200	Portion 4 on CTN406	Rachel Stirrat	22/06/1967

Table 5-10 Certificates of Title AOPC 4 Lot 41 on DS290

Certificate of Title	Land Description	Proprietor	Date of Ownership
Current Title 30496212	Lot 40 on DS289 Lot 41 on DS290 Lot 42 on DS290	Queensland Energy Resources Ltd	15/04/2008
Historical Title 30496212	Lot 40 on DS289 Lot 41 on DS290 Lot 42 on DS290	Donald Davey	28/02/1986
Historical Title 30496212	Deed of Grant	Donald Davey	03/06/1982

Table 5-11 Certificates of Title AOPC 5 Lot 401 on DT4026

Certificate of Title	Land Description	Proprietor	Date of Ownership
Current Title 30040098	Lot 401 on DT4026	Craig and Brian Butler	06/12/2007
Historical Title 30040098	Lot 401 on DT4026	Frank Butler	25/07/1986
Historical Title 30040098	Deed of Grant	Frank Butler	23/01/1985
Historical Title 30040098	Portion 401	Frank Butler	04/07/1972
Historical Title 30040098	Portion 401	Richard and Frank Butler	18/12/1964
Historical Title 30040098	Portion 401	Frank Butler	11/05/1927
Historical Title 30040098	Portion 401	Arthur, William and Frank Butler	09/01/1918

5 Site History

Certificate of Title	Land Description	Proprietor	Date of Ownership
Historical Title 30040098	Portion 401	William Butler	19/09/1910
Historical Title 30040098	Portion 401	Robert and John Archer	27/02/1900
Historical Title 30040098	Portion 401	Mary and Frederick Morgan	30/09/1898
Historical Title 30040098	Portion 401	Thomas, Edwin and Frederick Morgan	18/05/1898
Historical Title 30040098	Land Purchase	Frederick Morgan	10/09/1878

Areas of Potential Concern

Areas of potential concern (AOPC) were identified from an aerial photograph (EQ_Frvw_Gldstn_Aerial_2008) supplied by Santos. AOPC are features in the landscape with the potential to be contaminated on the basis of infrastructure (e.g. chemical storage tanks, stock dip sites, industrial facilities). For this study, the alternative route study areas were reviewed from south to north.

The scope of work did not involve site inspection; however, details on geology, hydrogeology, potential contaminants and sensitive receivers are discussed relevant to each site.

Figures 2 to 6 show the broad setting of each AOPC, whilst Plates 6-1 to 6-5 illustrate the AOPC and were obtained from the 2008 aerial photographs.

6 Areas of Potential Concern

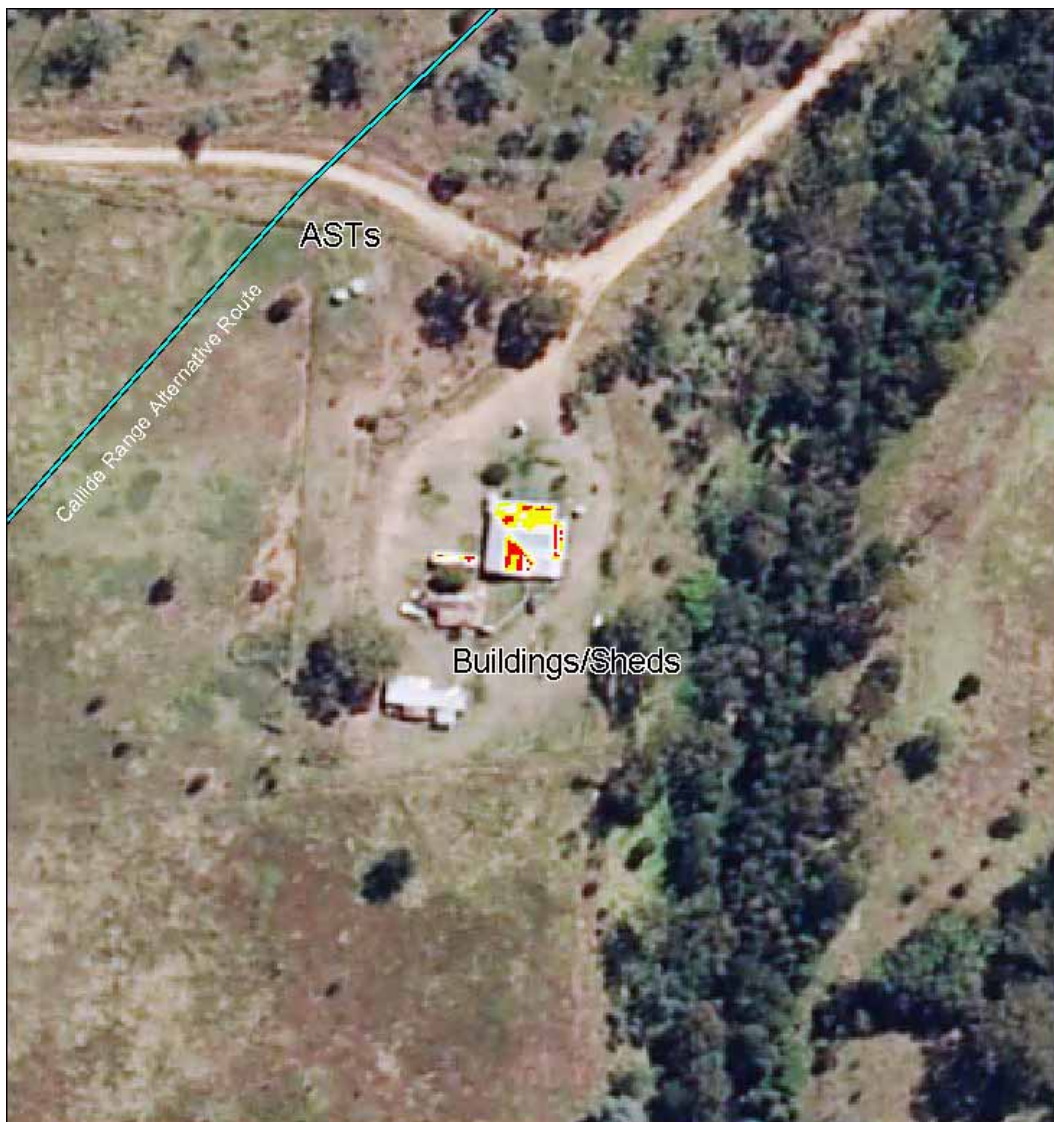
6.1 AOPC 1 Lot 2 on RP605812 (Callide Range Alternative Route)

The site was identified as an AOPC due to the location of two above ground storage tanks (ASTs) in proximity to the pipeline corridor. Historical aerials (from 1965 through to 2004) indicate that between 1965 and 1984 a stockyard existed in this location. Between 1984 and 1999, the stockyard area was replaced by tank storage.

Farmyard infrastructure is located in close proximity to the supplementary EIS route alternative (Callide Range Alternative Route) as illustrated in Plate 6-1.

Figure 2 illustrates the location of the AOPC within the study area.

Plate 6-1 Aerial showing AOPC 1 Lot 2 on RP605812 and supplementary EIS route alternatives–



6 Areas of Potential Concern

Geology and Hydrogeology

The geology comprises the Permian Youlambie Conglomerate consisting of conglomerate, lithic and feldspathic arenite, siltstone, conglomeratic mudstone, mudstone, acid lava and tuff. This is underlain by Early Carboniferous Three Moon Conglomerate, consisting of acid and intermediate lava, tuff, agglomerate, conglomerate lithic arenite, siltstone and mudstone (Qld Govt – Monto Geological Sheet SG/56-10 1:250,000 map).

Based on groundwater maps, the hydrogeology of the underlying aquifer is classified as Sedimentary Strata (e.g. sandstone, shale, and conglomerate) with an approximate bore yield of <5 L/sec and a salinity of <500 mg/L Total Dissolved Ions (TDI). This salinity level suits most groundwater usage (Groundwater Resources of Queensland – Department of Mines Series 4, 1:2,500,000, 1987).

Chemicals of Potential Concern

Chemicals of potential concern (COPC) associated with the site could include:

- Arsenic;
- Hydrocarbons; and
- Pesticides.

Potential Sensitive Receptors

Potential sensitive receptors of COPC identified at this site could include:

- On site workers involved in pipeline construction;
- Local ecosystems;
- Soil; and
- Groundwater.

6 Areas of Potential Concern

6.2 AOPC 2 Lot 5 on RP843128 (GLNG Gas Transmission Pipeline September 2009)

The site was identified as an AOPC due to the pipeline study area encompassing a stockyard area, with the potential for soil/groundwater contamination from pesticide use associated with stock dip or spray race use. Historical aerials suggest that the stockyard came into use between 1999 and 2004.

West of the pipeline alignment is a potential waste dump, illustrated in Plate 6-2. This waste dump area was not present in the historical 2004 aerial.

Figure 3 illustrates the location of the AOPC within the pipeline study area.

Plate 6-2 Aerial showing AOPC 2 Lot 5 on RP843128 and GLNG Gas Transmission Pipeline September 2009



6 Areas of Potential Concern

Geology and Hydrogeology

The geology is the early Carboniferous Three Moon Conglomerate, consisting of acid and intermediate lava, tuff, agglomerate, conglomerate lithic arenite, siltstone and mudstone. Mapped faults are identified in the area surrounding the AOPC. Additionally, there are intrusions of Tertiary basalt, and the area is underlain by Permian to Triassic Galaway Plain Tonalite. (Qld Govt – Monto Geological Sheet SG/56-10 1:250,000 map).

The mapped hydrogeology of the underlying aquifer is classified as Sedimentary Strata (e.g. sandstone, shale, and conglomerate) with an approximate bore yield of <5 L/sec and a salinity of <500 mg/L TDI. This salinity level suits most groundwater usage (Groundwater Resources of Queensland – Department of Mines Series 4, 1:2,500,000, 1987).

Chemicals of Potential Concern

Chemicals of potential concern (COPC) associated with the site could include:

- Heavy metals;
- Hydrocarbons;
- Pesticides; and
- Waste oils;

Potential Sensitive Receptors

Potential sensitive receptors of COPC identified at this site could include:

- On site workers involved in pipeline construction;
- Local ecosystems;
- Soil; and
- Groundwater.

6 Areas of Potential Concern

6.3 AOPC 3 Lot 4 on CTN406 CPIC (CICSDA Section)

The site was identified as an AOPC due to the CICSDA encompassing a shed and an abandoned stockyard area (Plate 6-3). Historical aerials (1965 to 2004) suggest the stockyard was in use between 1965 and 1999, and by 2004 the access tracks, as well as the stockyard were less defined.

The potential exists for soil or groundwater contamination from pesticide use associated with stock dip or spray race use and/or potential storage of chemicals.

Plate 6-3 Aerial showing AOPC 3 Lot 4 on CTN406 within the CPIC (CICSDA Section)



Geology and Hydrogeology

The geology in the area is dominated by the Galoway Plain Tonalite, a grey tonalite (Qld Govt – Monto Geological Sheet SG/56-10 1:250,000 map).

6 Areas of Potential Concern

The hydrogeology of the underlying aquifer is mapped as acid to intermediate intrusive strata (e.g. granite, tonalite) with an approximate bore yield of <5 L/sec and a salinity of <500 mg/L TDI. This salinity level suits most purposes (Groundwater Resources of Queensland – Department of Mines Series 4, 1:2,500,000, 1987).

Chemicals of Potential Concern

Chemicals of potential concern (COPC) associated with the sites could include:

- Arsenic;
- Pesticides; and
- Hydrocarbons.

Potential Sensitive Receptors

Potential sensitive receptors of COPC identified at the site could include:

- On site workers involved in the pipeline construction;
- Local ecosystems;
- Soil; and
- Groundwater.

6 Areas of Potential Concern

6.4 AOPC 4 Lot 41 on DS290 (GLNG Gas Transmission Pipeline September 2009– CPIC (GSDA Section))

The site was identified as an AOPC as the pipeline study area passes adjacent to existing farmyard infrastructure and a stockyard (Plate 6-4).

Historical aerials indicate the buildings have been in place since 1959, and the stockyard is clearly visible from 1970 onwards.

There exists the potential for soil/groundwater contamination from the use of pesticides in a stock dip or spray race, storage of chemicals/fuel. Figure 5 illustrates the location of the AOPC to the pipeline.

Plate 6-4 Aerial showing AOPC 4 Lot 41 on DS290 and GLNG Gas Transmission Pipeline September 2009 – CPIC (GSDA Section)



6 Areas of Potential Concern

Geology and Hydrogeology

The geology in this area consists of Quaternary Alluvium (undifferentiated creek and floor plain alluvium – silt, sand and gravel). This unit is underlain by the Targinie Granite, a monzogranite/granite (Qld Govt – Gladstone Geological Sheet 9150, 1:100,000 map).

The hydrogeology of the underlying aquifer is mapped as basic volcanic strata (e.g. basalt) with an approximate bore yield of <5 L/sec and a salinity of <500 mg/L TDI. This salinity level suits most purposes (Groundwater Resources of Queensland – Department of Mines Series 4, 1:2,500,000, 1987).

Chemicals of Potential Concern

Chemicals of potential concern (COPC) associated with the site could include:

- Heavy metals;
- Hydrocarbons;
- Pesticides; and
- Waste Oils.

Potential Sensitive Receptors

Potential sensitive receptors of COPC identified at the site could include:

- On site workers involved in the pipeline construction;
- Local ecosystems;
- Soil; and
- Groundwater.

6 Areas of Potential Concern

6.5 AOPC 5 Lot 401 on DT4026 (GLNG Gas Transmission Pipeline September 2009 – CPIC (GSDA Section))

The site was identified as an AOPC due to the pipeline study corridor containing a stockyard area (Plate 6-5). Historical aerials (1959 – 1999) indicate that the stockyard came into use between 1970 and 1979. It became less clearly visible between 1989 and 1999 and by 2008 appears disused.

The potential for soil and groundwater contamination exists from pesticide use associated with a stock dip or spray race. Figure 6 illustrates the land parcel and its location within the study area.

Plate 6-5 Aerial showing AOPC 5 Lot 401 on DT4026 and GLNG Gas Transmission Pipeline September 2009 – CPIC (GSDA Section)



Geology and Hydrogeology

The geology consists of Quaternary Alluvium (undifferentiated creek and floor plain alluvium – silt, sand and gravel). The alluvium is underlain by the Wandilla Formation consisting of mudstone, lithic

6 Areas of Potential Concern

sandstone, siltstone, jasper, chert, slate; local schist. (Qld Govt – Gladstone Geological Sheet 9150, 1:100,000 map).

The hydrogeology of the underlying aquifer is metamorphic strata (e.g. schist, slate) with an approximate bore yield of <5 L/sec and a salinity of <500 mg/L TDI. This salinity level suits most purposes (Groundwater Resources of Queensland – Department of Mines Series 4, 1:2,500,000, 1987).

Chemicals of Potential Concern

Chemicals of potential concern (COPC) associated with the sites past use could include:

- Arsenic; and
- Pesticides.

Potential Sensitive Receptors

Potential sensitive receptors of COPC identified at the site could include:

- On site workers involved in the pipeline construction;
- Local ecosystems;
- Soil; and
- Groundwater.

References

DoE (Queensland Department of Environment), 1998. *Draft guidelines for the Assessment and Management of Contaminated Land in Queensland*. Queensland Government, May 1998, 78pp. [Http://www.epa.qld.gov.au/publications/p00090aa.pdf/Draft_guidelines_for_the_assessment_management_of_contaminated_land_in_Queensland.pdf](http://www.epa.qld.gov.au/publications/p00090aa.pdf/Draft_guidelines_for_the_assessment_management_of_contaminated_land_in_Queensland.pdf).

Groundwater Resources of Queensland – Department of Mines Series 4, 1:2,500,000, 1987 map.

NEPC (1999). *National Environment Protection (assessment of Site Contamination) Measure 1999*, National Environment Protection Council, Canberra -

http://www.ephc.gov.au/nepms/cs/con_sites.html.

Queensland Environmental Protection Act, 1994. Queensland Government.

<http://www.legislation.qld.gov.au/LEGISLTN/CURRENT/E/EnvProtA94.pdf>.

Queensland Government - Gladstone Sheet 9150, 1:100,000 Series map.

Queensland Government - Monto, QLD Geological Series Sheet SG 56-1 1:250,000, 1962 map.

Limitations

7.1 Phase 1 Report Limitation Statements

7.1.1 Conclusion and Recommendations

A Tier 1 review comprising of studies of current aerial photos, has been carried out for the revised alignment of the gas transmission pipeline for the GLNG Project. Five areas of potential concern (AOPC) have been identified as requiring a Tier 2 review.

The five sites include:

1. AOPC 1 – Above ground storage tanks, possible fuel or chemical storage, previous stockyard;
2. AOPC 2 – Stockyard, possible pesticide use/storage and possible waste dump;
3. AOPC 3 – Stockyard, possible pesticide use/storage;
4. AOPC 4 – Stockyard, possible pesticide use/storage and close proximity to farmyard infrastructure; and
5. AOPC 5 – Stockyard, possible pesticide use/storage.

EMR, CLR, Certificate of Title searches as well as historical aerial photo studies have been carried out for these five sites. None of the AOPCs were listed on the EMR or CLR.

The Tier 1 and Tier 2 reviews identified some potential for impact which will require further assessment as part of the pipeline EMP. The stockyard sites potentially present the highest risk, in particular AOPC 4, where the revised pipeline alignment is in close proximity to the existing stockyards and farmyard infrastructure. In general, stockyard sites have the potential to contain a stock dip or a spray race, where pesticide use/storage may have taken place.

It can be noted that where the pipeline passes close to housing/farming infrastructure, septic systems may potentially be in place. The locations of these may need to be further investigated before development of the pipeline corridor proceeds. Where these sites occurred within the study area, they have been highlighted. It should also be noted that it was not possible to identify the purpose of infrastructure within the AOPC. There exists the possibility that the infrastructure identified may have been built with asbestos containing materials. Further investigations of the building materials of the buildings/sheds identified may be required if they are to be disturbed during the construction phase of the pipeline.

Site visits were not included in the scope of works, so further investigations will be required to be undertaken prior to development once the pipeline alignment is finalised. Where contamination is identified, the pipeline route should avoid impacting the site, or where necessary, undertake the appropriate remediation measures which may include, but not limited to, the sampling, analysis, excavation and removal of impacted soil.

7.1.2 Mitigation

The scope of work for this PSI did not include a detailed site investigation or sampling. As a result, only general mitigation measures can be detailed. A comprehensive listing of mitigation measures are outlined within EIS Section 7.3.2.5.

The potential impacts from the AOPCs identified within this study include the excavation of potential contaminants during gas transmission pipeline construction or decommissioning activities and either mobilisation of such contaminants off-site or exposure of contaminants to workers and the health risks associated with this.

8 Limitations

Potential mitigation measures for these AOPC include total avoidance; conduct site assessment management works at these sites in order to minimise project related impacts; or remediate the AOPC before pipeline construction/development activities occurring.

As part of the pipeline development EMP more detailed (Tier 3) assessments will be carried out at each AOPC to assess which mitigation measure is most appropriate for each site. In addition, site protocols will be developed by the pipeline construction contractor/proponent to manage any areas of potential contamination that may be exposed during development/construction.

7.1.3 Limitations

URS Australia Pty Ltd (URS) has prepared this report in accordance with the usual care and thoroughness of the consulting profession. It is based on generally accepted practices and standards at the time it was prepared. No other warranty, expressed or implied, is made as to the professional advice included in this report. It is prepared in accordance with the scope of work and for the purpose outlined in the Proposal dated 15th July 2009.

The methodology adopted and sources of information used by URS are outlined in this report. URS has made no independent verification of this information beyond the agreed scope of works and URS assumes no responsibility for any inaccuracies or omissions. No indications were found during our investigations that information contained in this report as provided to URS was false.

This report was prepared between September and October 2009 and is based on the conditions encountered and information reviewed at the time of preparation. URS disclaims responsibility for any changes that may have occurred after this time.

This report should be read in full. No responsibility is accepted for use of any part of this report in any other context or for any other purpose. This report does not purport to give legal advice. Legal advice can only be given by qualified legal practitioners.

This conclusion and all information in this Report is given strictly in accordance with and subject to the following limitations and recommendations:

- a) The Phase One Environmental Site Assessment undertaken to form this conclusion is limited to the scope of work agreed between URS and Santos as outlined in Section 1.2 "Scope of Works" of this Report.
- b) The investigations carried out for the purposes of the Report have been undertaken, and the Report has been prepared, in accordance with normal prudent practice and by reference to applicable environmental regulatory authority and industry standards, guidelines and assessment criteria in existence at the date of this Report.
- c) This Report should be read in full and no excerpts are to be taken as representative of the findings. No responsibility is accepted by URS for use of any part of this Report in any other context.
- d) This Report was prepared between [5 October 2009] and [20 October 2009] and is based on the conditions encountered on the site and information reviewed during the time of preparation. URS accepts no responsibility for any changes in site conditions or in the information reviewed that have occurred after this period of time.
- e) Where this Report indicates that information has been provided to URS by third parties, URS has made no independent verification of this information except as expressly stated in the Report.
- f) Given the limited Scope of Works, URS has only assessed the potential for contamination resulting from past and current known uses of the site.

8 Limitations

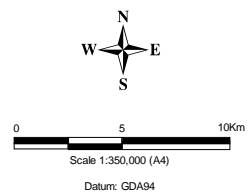
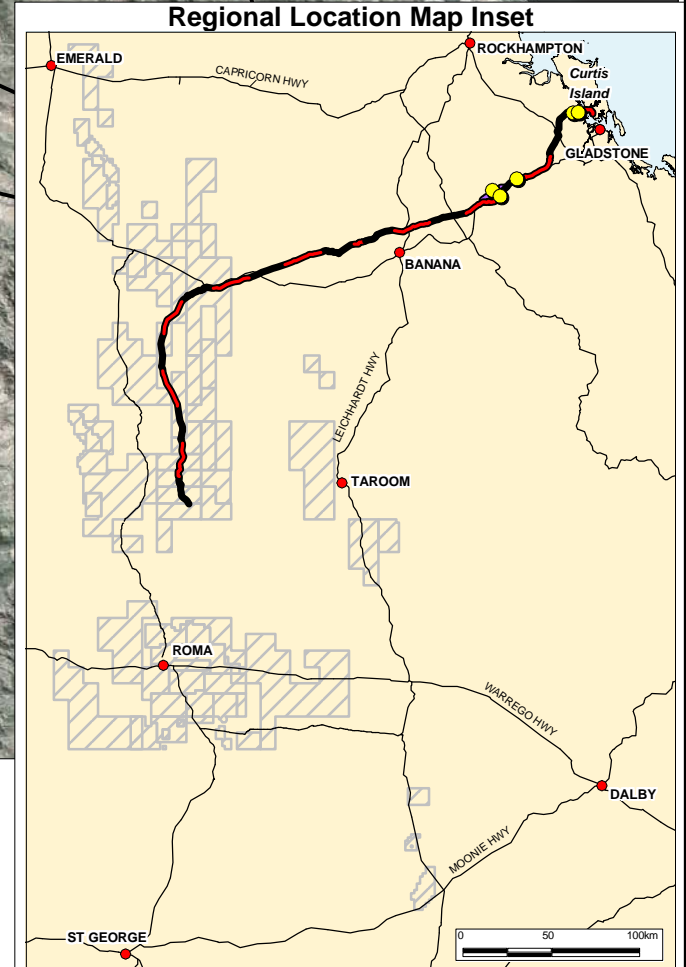
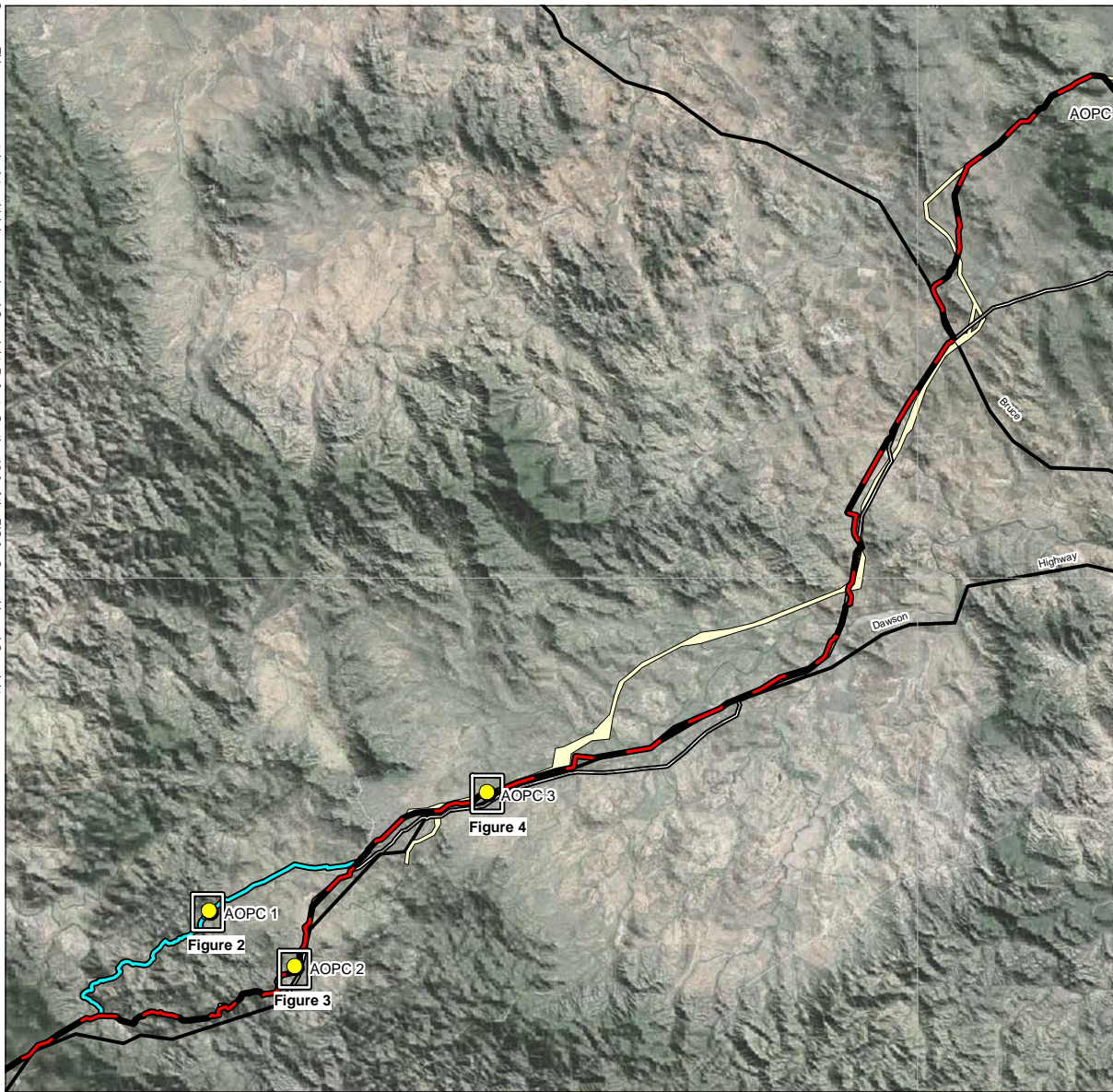
- g) Inspections undertaken in respect of this Report are limited to visual inspections only and are constrained by the particular site conditions, such as the location of buildings, services and vegetation.
- h) No sampling or laboratory analysis has been undertaken by URS as part of this investigation. URS does not guarantee that contamination does not exist at the site.
- i) Except as otherwise specifically stated in this Report, URS makes no warranty or representation as to the presence or otherwise of asbestos and/or asbestos containing materials ("ACM") on the site. If fill has been imported on to the site at any time, or if any buildings constructed prior to 1970 have been demolished on the site or materials from such buildings disposed of on the site, the site may contain asbestos or ACM.
- j) No investigations have been undertaken into any off-site conditions, or whether any adjoining sites may have been impacted by contamination or other conditions originating from this site.
- k) The conclusion set out above is based solely on the information and findings contained in this Report.
- l) Except as specifically stated above, URS makes no warranty, statement or representation of any kind concerning the suitability of the site for any purpose or the permissibility of any use, development or re-development of the site.
- m) Use, development or re-development of the site for any purpose may require planning and other approvals and, in some cases, environmental regulatory authority and accredited site auditor approvals. URS offers no opinion as to whether the current use has any or all approvals required, is operating in accordance with any approvals, the likelihood of obtaining any approvals, or the conditions and obligations which such approvals may impose, which may include the requirement for additional environmental works.
- n) URS makes no determination or recommendation regarding a decision to provide or not to provide financing with respect to the site.
- o) The ongoing use of the site and/or use of the site for any different purpose may require the owner/user to manage and/or remediate site conditions, such as contamination and other conditions, including but not limited to conditions referred to in this Report.

Figures



Client

Source: This map may contain data which is sourced and Copyright. Refer to Section 18.2 of the EIS for Ownership and Copyright.



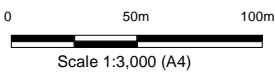
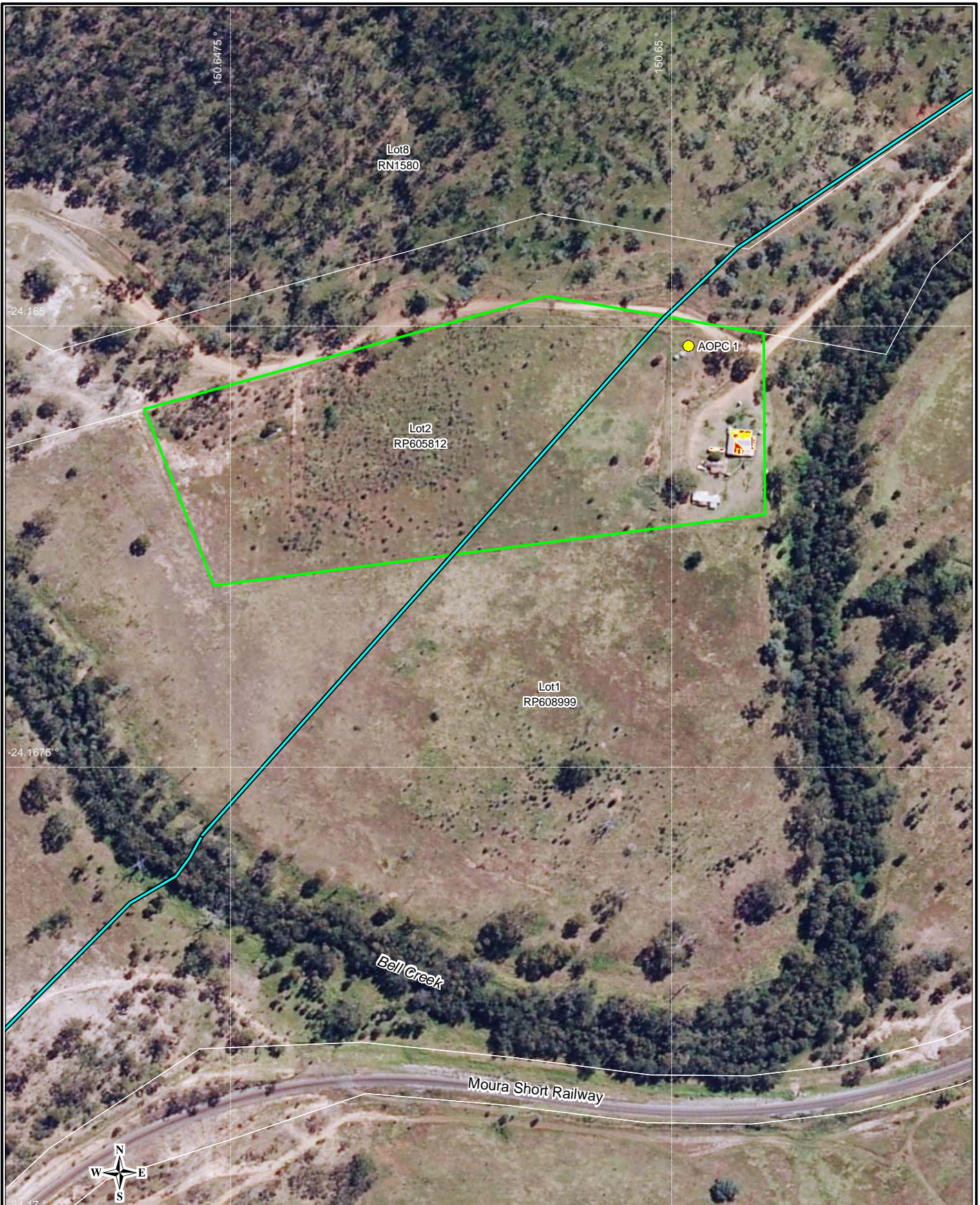
- Area of Potential Concern
- GLNG Gas Transmission Pipeline (September 2009)
- Major Highway
- Callide Range Alternative Route (September 2009)
- CSG Fields
- Common Pipeline Infrastructure Corridor (September 2009)
- EIS Gas Transmission Pipeline (March 2009)

Project
GLADSTONE LNG PROJECT
ENVIRONMENTAL IMPACT STATEMENT
SUPPLEMENT
- CONTAMINATED LAND REPORT

Drawn: VH
 Approved: JB
 Date: 09-11-2009
 Job No: 4262 6440 /6220
 File No: 42626440-g-2105b.wor

Title
GLNG
GAS TRANSMISSION PIPELINE
ALIGNMENT



Figure: 1
 Rev:C
 A4

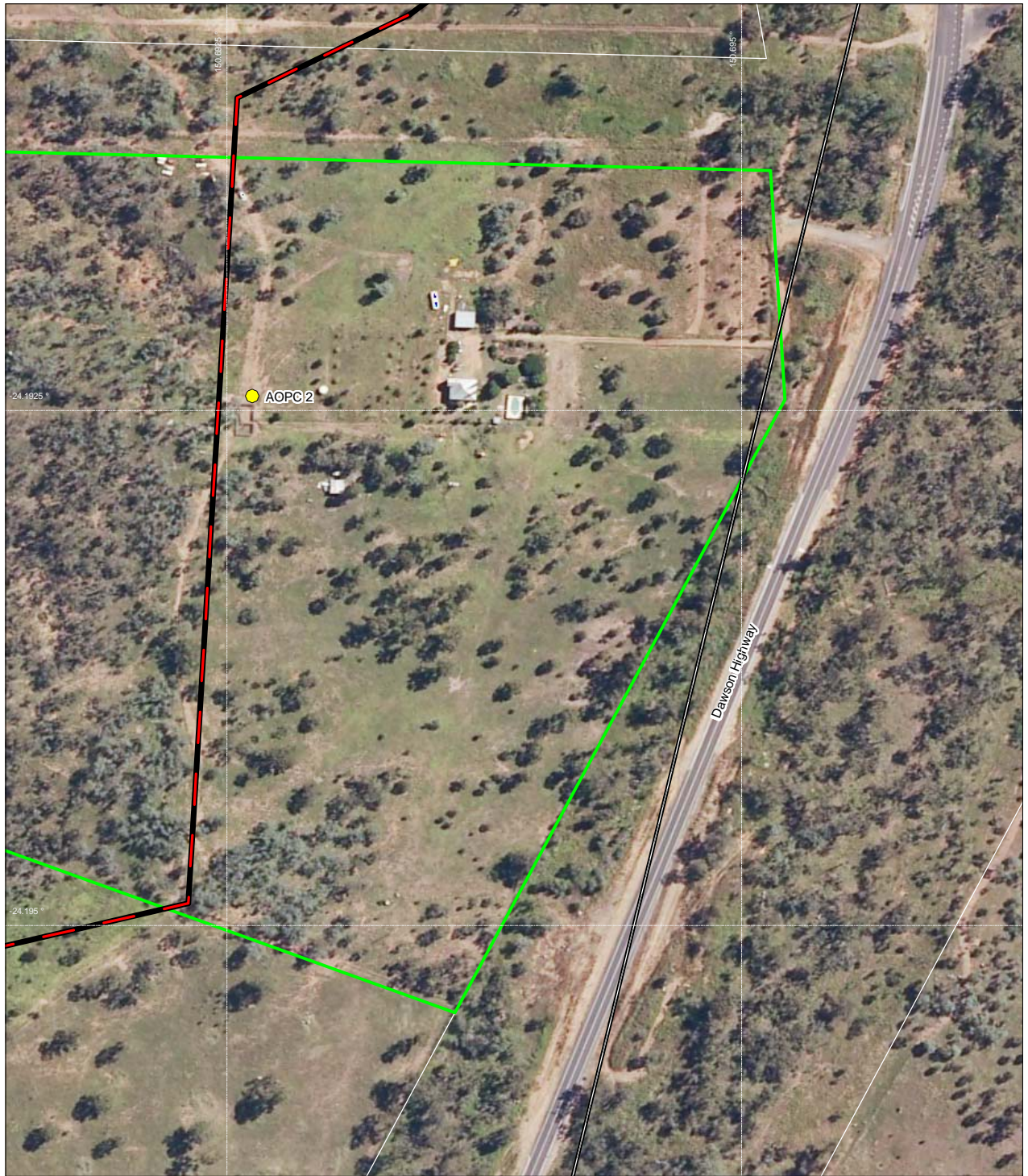


- Area of Potential Concern
- Lot 2 on RP605812 Boundary
- Callide Range Alternative Route (September 2009)
- Major Road

Source: This map may contain data which is sourced and Copyright. Refer to Section 18.2 of the EIS for Ownership and Copyright.

This drawing is subject to COPYRIGHT. It remains the property of URS Australia Pty Ltd.

 	Project GLADSTONE LNG PROJECT ENVIRONMENTAL IMPACT STATEMENT SUPPLEMENT - CONTAMINATED LAND REPORT	Title AOPC 1 AREA OF POTENTIAL CONCERN	
	Drawn: VH	Approved: JB	Date: 19-10-2009
Job No: 4262 6220		File No: 42626220-g-2106.wor	
			Rev:A A4





0 25 50 M

Scale 1:3,000 (A4)

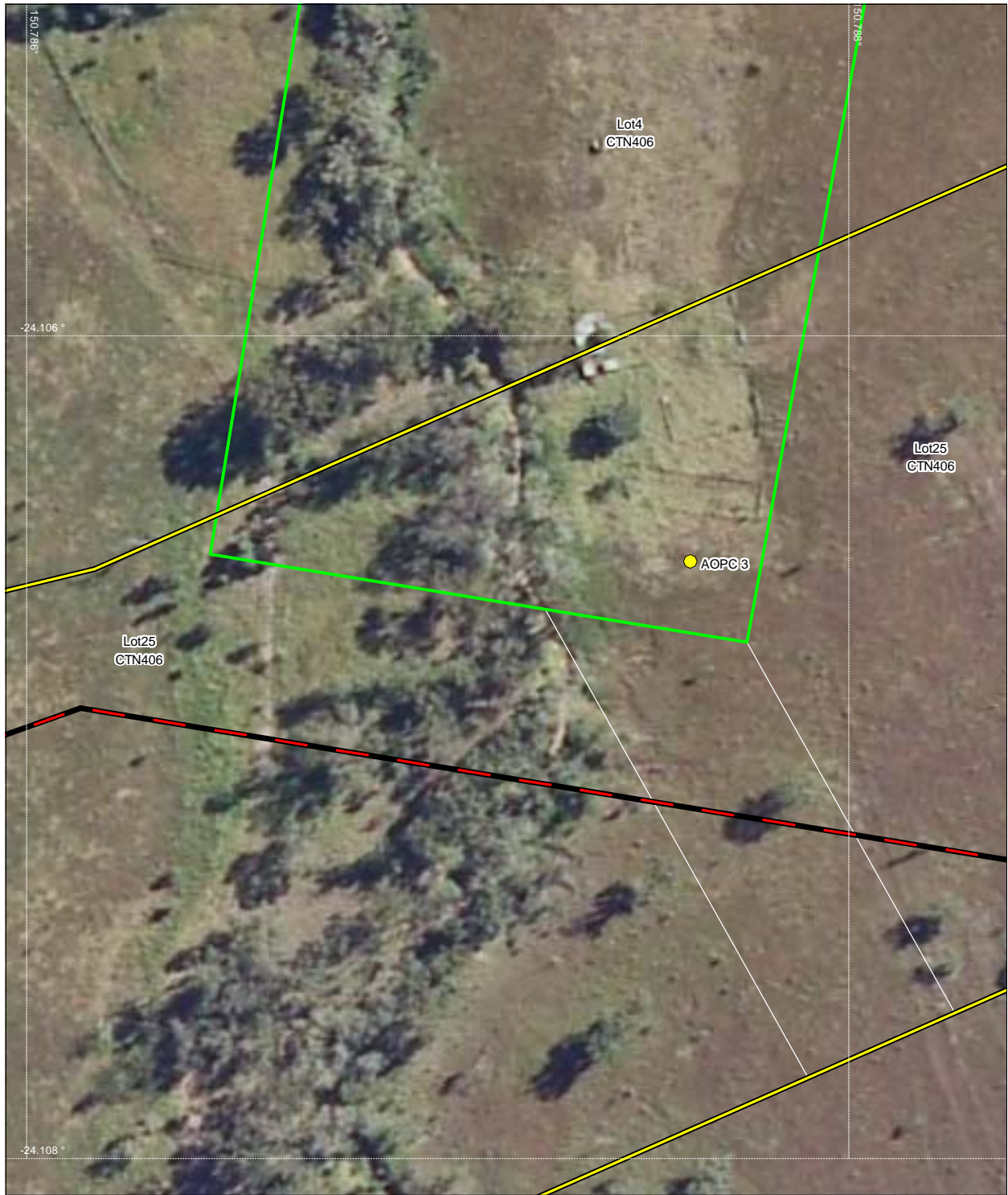
Datum: GDA94

- Area of Potential Concern
- Lot 4 on CTN406 Boundary
- GLNG Gas Transmission Pipeline (September 2009)
- EIS Gas Transmission Pipeline (March 2009)

Source: This map may contain data which is sourced and Copyright. Refer to Section 18.2 of the EIS for Ownership and Copyright.

 	Project GLADSTONE LNG PROJECT ENVIRONMENTAL IMPACT STATEMENT SUPPLEMENT - CONTAMINATED LAND REPORT		Title AOPC 2 AREA OF POTENTIAL CONCERN	
	Drawn: VH	Approved: JB	Date: 19-10-2009	Figure: 3
Job No: 4262 6220		File No: 42626220-g-2107.wor		



This drawing is subject to COPYRIGHT. It remains the property of URS Australia Pty Ltd.



0 25 50 M
 Scale 1:1,500 (A4)
 Datum : GDA94

- Area of Potential Concern
- Lot 4 on CTN406 Boundary
- GLNG Gas Transmission Pipeline (September 2009)
- Common Pipeline Infrastructure Corridor (CICSDA Section) (September 2009)

Source: This map may contain data which is sourced and Copyright. Refer to Section 18.2 of the EIS for Ownership and Copyright.

 	Project GLADSTONE LNG PROJECT ENVIRONMENTAL IMPACT STATEMENT SUPPLEMENT - CONTAMINATED LAND REPORT		Title AOPC 3 AREA OF POTENTIAL CONCERN	
	Drawn: VH Job No: 4262 6440 /6220	Approved: JB File No: 42626440-g-2108.wor	Date: 09-11-2009	Figure: 4



This drawing is subject to COPYRIGHT. It remains the property of URS Australia Pty Ltd.



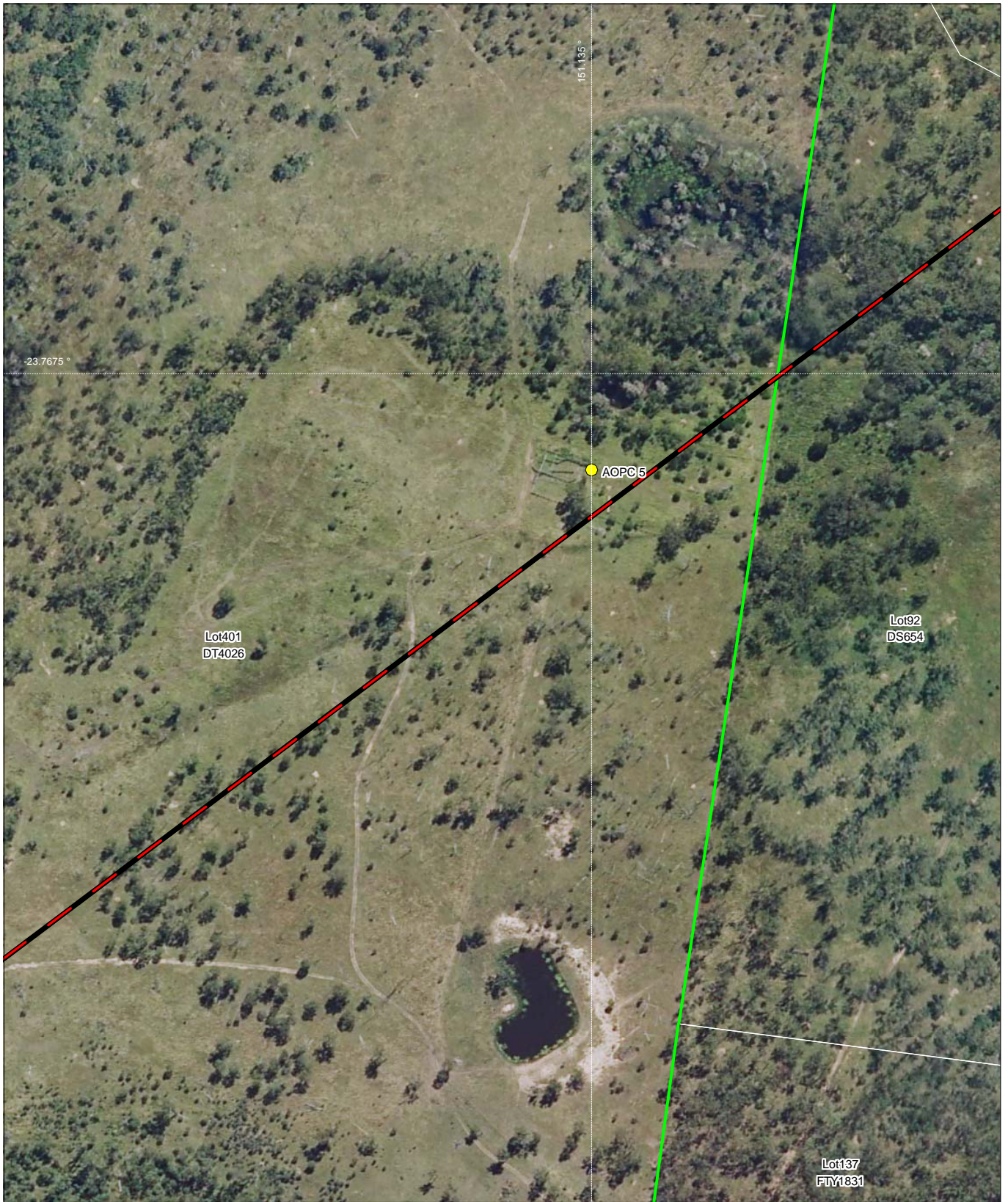
0 50m 100m
 Scale 1:3,500 (A4)
 Datum: GDA94

- Area of Potential Concern
- Lot 41 on DS290 Boundary
- GLNG Gas Transmission Pipeline (September 2009)

Source: This map may contain data which is sourced and Copyright. Refer to Section 18.2 of the EIS for Ownership and Copyright.

 	Project GLADSTONE LNG PROJECT ENVIRONMENTAL IMPACT STATEMENT SUPPLEMENT - CONTAMINATED LAND REPORT		Title AOPC 4 AREA OF POTENTIAL CONCERN	
	Drawn: VH	Approved: JB	Date: 09-11-2009	Figure: 5
Job No: 4262 6440 /6220 File No: 42626440-g-2109.wor				



This drawing is subject to COPYRIGHT. It remains the property of URS Australia Pty Ltd.



0 50m 100m
 Scale 1:3,500 (A4)
 Datum: GDA94

- Area of Potential Concern
- Lot 401 on DT4026 Boundary
- GLNG Gas Transmission Pipeline (September 2009)

Source: This map may contain data which is sourced and Copyright. Refer to Section 18.2 of the EIS for Ownership and Copyright.

 	Project GLADSTONE LNG PROJECT ENVIRONMENTAL IMPACT STATEMENT SUPPLEMENT - CONTAMINATED LAND REPORT		Title AOPC 5 AREA OF POTENTIAL CONCERN	
	Drawn: VH Job No: 4262 6440 /6220	Approved: JB File No: 42626440-g-2110.wor	Date: 19-10-2009	Figure: 6

This drawing is subject to COPYRIGHT. It remains the property of URS Australia Pty Ltd.

Appendix A Environmental Management Register and Contaminated Land Register - Search Results

QLD ENVIRONMENTAL PROTECTION AGENCY**ENVIRONMENTAL MANAGEMENT REGISTER (EMR)
CONTAMINATED LAND REGISTER (CLR)**

Transaction ID: 1171486 EMR Site Id: 09 October 2009
This response relates to a search request received for the site:
Lot: 2 Plan: RP605812

EMR RESULT

The above site is NOT included on the Environmental Management Register.

CLR RESULT

The above site is NOT included on the Contaminated Land Register.

ADDITIONAL ADVICE

**EMR/CLR Searches may be conducted online through the State Government
Website www.smartservice.qld.gov.au or Citec Confirm www.confirm.com.au.**

If you have any queries in relation to this search please phone (07) 3227 7370.

Lindi Bowen
Registrar, Contaminated Land Unit

QLD ENVIRONMENTAL PROTECTION AGENCY**ENVIRONMENTAL MANAGEMENT REGISTER (EMR)
CONTAMINATED LAND REGISTER (CLR)**

Transaction ID: 1169930 EMR Site Id: 05 October 2009
This response relates to a search request received for the site:
Lot: 5 Plan: RP843128

EMR RESULT

The above site is NOT included on the Environmental Management Register.

CLR RESULT

The above site is NOT included on the Contaminated Land Register.

ADDITIONAL ADVICE

EMR/CLR Searches may be conducted online through the State Government Website www.smartservice.qld.gov.au or Citec Confirm www.confirm.com.au.

If you have any queries in relation to this search please phone (07) 3227 7370.

Lindi Bowen
Registrar, Contaminated Land Unit

QLD ENVIRONMENTAL PROTECTION AGENCY**ENVIRONMENTAL MANAGEMENT REGISTER (EMR)
CONTAMINATED LAND REGISTER (CLR)**

Transaction ID: 1169936 EMR Site Id: 05 October 2009
This response relates to a search request received for the site:
Lot: 4 Plan: CTN406

EMR RESULT

The above site is NOT included on the Environmental Management Register.

CLR RESULT

The above site is NOT included on the Contaminated Land Register.

ADDITIONAL ADVICE

EMR/CLR Searches may be conducted online through the State Government Website www.smartservice.qld.gov.au or Citec Confirm www.confirm.com.au.

If you have any queries in relation to this search please phone (07) 3227 7370.

Lindi Bowen
Registrar, Contaminated Land Unit

QLD ENVIRONMENTAL PROTECTION AGENCY**ENVIRONMENTAL MANAGEMENT REGISTER (EMR)
CONTAMINATED LAND REGISTER (CLR)**

Transaction ID: 1169950 EMR Site Id: 05 October 2009
This response relates to a search request received for the site:
Lot: 41 Plan: DS290

EMR RESULT

The above site is NOT included on the Environmental Management Register.

CLR RESULT

The above site is NOT included on the Contaminated Land Register.

ADDITIONAL ADVICE

EMR/CLR Searches may be conducted online through the State Government Website www.smartservice.qld.gov.au or Citec Confirm www.confirm.com.au.

If you have any queries in relation to this search please phone (07) 3227 7370.

Lindi Bowen
Registrar, Contaminated Land Unit

QLD ENVIRONMENTAL PROTECTION AGENCY
ENVIRONMENTAL MANAGEMENT REGISTER (EMR)
CONTAMINATED LAND REGISTER (CLR)

Transaction ID: 1169951 EMR Site Id: 05 October 2009
This response relates to a search request received for the site:
Lot: 401 Plan: DT4026

EMR RESULT

The above site is NOT included on the Environmental Management Register.

CLR RESULT

The above site is NOT included on the Contaminated Land Register.

ADDITIONAL ADVICE

EMR/CLR Searches may be conducted online through the State Government Website www.smartservice.qld.gov.au or Citec Confirm www.confirm.com.au.

If you have any queries in relation to this search please phone (07) 3227 7370.

Lindi Bowen
Registrar, Contaminated Land Unit

Appendix B Certificate of Title - Search Results

CURRENT TITLE SEARCH

ENVIRONMENT AND RESOURCE MANAGEMENT, QUEENSLAND

Request No: 7701830

Search Date: 09/10/2009 11:43

Title Reference: 30233056

Date Created: 27/06/1951

Previous Title: 30047253

REGISTERED OWNER

Dealing No: 702449857 14/01/1998

BRIAN GRAHAM KERIM

JAYNE ELIZABETH KERIM

JOINT TENANTS

ESTATE AND LAND

Estate in Fee Simple

LOT 2

REGISTERED PLAN 605812

County of RAGLAN

Parish of DUMGREE

Local Government: BANANA

EASEMENTS, ENCUMBRANCES AND INTERESTS

1. Rights and interests reserved to the Crown by
Deed of Grant No. 10704222 (POR 329)
2. MORTGAGE No 702449861 14/01/1998 at 12:49
AUSTRALIA AND NEW ZEALAND BANKING GROUP LIMITED A.C.N. 005
357 522
3. CAVEAT No 711395573 04/02/2008 at 15:16
BEVERLEY ESTHER HACKETT

ADMINISTRATIVE ADVICES - NIL

UNREGISTERED DEALINGS - NIL

CERTIFICATE OF TITLE ISSUED - No

Caution - Charges do not necessarily appear in order of priority

** End of Current Title Search **

COPYRIGHT THE STATE OF QUEENSLAND (ENVIRONMENT AND RESOURCE MANAGEMENT) [2009]

Requested By: D APPLICATIONS CITEC CONFIRM

HISTORICAL TITLE SEARCH

ENVIRONMENT AND RESOURCE MANAGEMENT, QUEENSLAND

Request No: 7701881

Search Date: 09/10/2009 11:46

Title Reference: 30047253

This Title Has Been Fully Cancelled.

Refer to Image for Additional Information

ADMINISTRATIVE ADVICES - NIL

UNREGISTERED DEALINGS - NIL

CERTIFICATE OF TITLE ISSUED - No

** End of Historical Title Search **

COPYRIGHT THE STATE OF QUEENSLAND (ENVIRONMENT AND RESOURCE MANAGEMENT) [2009]

Requested By: D APPLICATIONS CITEC CONFIRM

CURRENT TITLE SEARCH

ENVIRONMENT AND RESOURCE MANAGEMENT, QUEENSLAND

Request No: 7661591

Search Date: 05/10/2009 12:45

Title Reference: 30652084

Date Created: 04/11/1993

Previous Title: 30647024

REGISTERED OWNER

Dealing No: 700241717 22/09/1994

WALTER GORDON JOHN FERRY

DEBORAH ELAINE FERRY JOINT TENANTS

ESTATE AND LAND

Estate in Fee Simple

LOT 5 REGISTERED PLAN 843128
County of RAGLAN Parish of DUMGREE
Local Government: BANANA

EASEMENTS, ENCUMBRANCES AND INTERESTS

1. Rights and interests reserved to the Crown by
Deed of Grant No. 30647024 (Lot 21 on CP RN1464)
2. EASEMENT No 700145832 04/08/1994 at 10:30
benefiting the land over
THE WHOLE OF LOT 10 ON RP843127
3. MORTGAGE No 701780865 29/01/1997 at 14:30
to
COMMONWEALTH BANK OF AUSTRALIA A.C.N. 123 123 124

ADMINISTRATIVE ADVICES - NIL

UNREGISTERED DEALINGS - NIL

CERTIFICATE OF TITLE ISSUED - No

Caution - Charges do not necessarily appear in order of priority

** End of Current Title Search **

COPYRIGHT THE STATE OF QUEENSLAND (ENVIRONMENT AND RESOURCE MANAGEMENT) [2009]

Requested By: D APPLICATIONS CITEC CONFIRM

HISTORICAL TITLE SEARCH

ENVIRONMENT AND RESOURCE MANAGEMENT, QUEENSLAND

Request No: 7662852

Search Date: 05/10/2009 14:15

Title Reference: 30647024

This Title Has Been Fully Cancelled.

Refer to Image for Additional Information

ADMINISTRATIVE ADVICES - NIL

UNREGISTERED DEALINGS - NIL

CERTIFICATE OF TITLE ISSUED - No

** End of Historical Title Search **

COPYRIGHT THE STATE OF QUEENSLAND (ENVIRONMENT AND RESOURCE MANAGEMENT) [2009]

Requested By: D APPLICATIONS CITEC CONFIRM

[Form 1.1]



Vol. C 647 Fol. 24

QUEENSLAND DEED OF GRANT OF LAND

Land Act 1962

VOL: C 647 FOLIO: 024



30647024

Elizabeth the Second, by the Grace of God, Queen of Australia,
and Her other Realms and Territories, Head of the Commonwealth -

TO ALL TO WHOM THESE PRESENTS SHALL COME, GREETING:

We, with the advice of the Executive Council under the Land Act 1962, grant in fee simple all that parcel of land described in Schedule 1 to the person described in Schedule 2,

SUBJECT TO the reservations and conditions specified, and such other reservations and conditions as may be contained in and declared by the laws of the State.

Specified Reservations -

- (a) All minerals (as defined by the Mineral Resources Act 1989) on and below the surface of the land; and
- (b) The right of access for the purpose of searching for and working any mines (as defined by the Mineral Resources Act 1989) in any part of the land; and
- (c) All petroleum (as defined by the Petroleum Act 1923) on and below the surface of the land; and
- (d) All rights of access for the purpose of searching for and for the operations of obtaining petroleum in any part of the land, and all rights of way for access and for pipe-lines and other purposes requisite for obtaining and conveying petroleum in the event of petroleum being obtained in any part of the said land.

Specified Conditions -

IN TESTIMONY WHEREOF, We have caused this Our grant to be sealed with the Seal of the State of Queensland.

WITNESS Our Trusty and Well-beloved Her Excellency Leneen Forde, Companion of the Order of Australia, Governor in and over the State of Queensland and its Dependencies, in the Commonwealth of Australia, at Government House, Brisbane, in Queensland aforesaid, this 12th day of August, in the 42nd Year of Our Reign and in the year of Our Lord 1993.

SCHEDULE 1 - DESCRIPTION OF LAND

Lot/Plan 21 / RN1464	County RAGLAN	Parish DUMGREE
-------------------------	------------------	-------------------

Area 745.1174 Ha. (Refer to plan for exclusion/s)

NOTE: For details of description, dimensions and marking of boundaries refer to survey plan mentioned above.

SCHEDULE 2 - GRANTEE



LAN ROY WELLS, DOREEN ELSIE WELLS and RUSSELL JOHN WELLS as tenants in common in equal shares

Department of Lands Reference: GHFL 35/9062






LV Volume/Folio: C 7628 / 222

ENTERED in Register, Vol. **C 647**, Folio








24 this 19th day of August, 1993

Registrar of Titles

SECOND SCHEDULE (continued)

REGISTERED PROPRIETOR	INSTRUMENT			RECORDED
	NATURE	NUMBER	PRODUCED	
Edward George Turner and Janice Fay Turner as joint tenants By Plan Cat No. 843125 part of the within land is subdivided into Lots 1-4 Cancelled vide Vol 652 Fol 76-79	Tfr Plan	C685800R C687605L	28Sep1993 19OCT1993	-4 OCT 1993 - 1 NOV 1993 <i>Leada</i>  <i>Leada</i> 
By Plan Cat No. 843126 part of the within land is subdivided into Lots 7 - 9 Cancelled vide Vol 652 Fol 80-82	Plan	C687608Y	19OCT1993	- 1 NOV 1993 <i>Leada</i> 
By Plan Cat No. 843127 part of the within land is subdivided into Lot 10 Cancelled vide Vol 652 Fol 83	Plan	C687611N	19OCT1993	- 1 NOV 1993 <i>Leada</i> 
By Plan Cat No. 843128 the balance of the within land is subdivided into Lots 5 and 6 Cancelled vide Vol 652 Fol 84-85	Plan	C687613T	19OCT1993	- 1 NOV 1993 <i>Leada</i> 

THIRD SCHEDULE (Easements, Encumbrances and Interests)

INSTRUMENT			PARTICULARS	RECORDED	CANCELLATION INSTRUMENT			
NATURE	NUMBER	PRODUCED			NUMBER	PRODUCED	RECORDED	
Mtge (No. 200992)	C682300R	to Commonwealth Development Bank of Australia under Section 285 of The Land Act of 1962	24 AUG 1993	<i>Mtge</i> 	C685797W	28Sep1993	-4 OCT 1993	<i>Leada</i> 
Mtge (No. 214136)	C682301V	to Queensland Industry Development Corporation under Section 285 of the Land Act of 1962	24 AUG 1993	<i>Mtge</i> 	C685799C	28Sep1993	-4 OCT 1993	<i>Leada</i> 
Mtge (No. 216847)	C682302X	to Queensland Industry Development Corporation under Section 285 of The Land Act of 1962	24 AUG 1993	<i>Mtge</i> 	C685798Y	28Sep1993	-4 OCT 1993	<i>Leada</i> 
Mtge	C685801V	28Sep1993 Queensland Industry Development Corporation	-4 OCT 1993	<i>Leada</i> 				

NOTE: ENTRIES RULED THROUGH AND AUTHENTICATED BY THE SEAL OF THE REGISTRAR OF TITLES ARE CANCELLED

* Dealings with this Lease will be Recorded on the Original Lease only instead of on this Deed of Grant

CURRENT TITLE SEARCH

ENVIRONMENT AND RESOURCE MANAGEMENT, QUEENSLAND

Request No: 7663334

Search Date: 05/10/2009 14:42

Title Reference: 30637114

Date Created: 11/02/1993

Previous Title: 30378078

30378079

REGISTERED OWNER

Dealing No: 701737894 03/01/1997

DENNIS EDWARD QUINN

ESTATE AND LAND

Estate in Fee Simple

LOT 4 CROWN PLAN CTN406
County of CLINTON Parish of GAYFIELD
Local Government: GLADSTONE

EASEMENTS, ENCUMBRANCES AND INTERESTS

1. Rights and interests reserved to the Crown by
Deed of Grant No. 30317200 (POR 4)
2. MORTGAGE No 701737899 03/01/1997 at 11:20
to
AUSTRALIA AND NEW ZEALAND BANKING GROUP LIMITED A.C.N. 005
357 522

ADMINISTRATIVE ADVICES - NIL

UNREGISTERED DEALINGS - NIL

CERTIFICATE OF TITLE ISSUED - No

Caution - Charges do not necessarily appear in order of priority

** End of Current Title Search **

COPYRIGHT THE STATE OF QUEENSLAND (ENVIRONMENT AND RESOURCE MANAGEMENT) [2009]

Requested By: D APPLICATIONS CITEC CONFIRM

(C) UNDIVIDED MOIETY

QUEENSLAND

[CERTIFICATE OF TITLE

VOL: C 378 FOLIO: 078



Dealing No. C285331

Reference to previous

Volume Folio

C317 200

Register Book

Vol. C 378 Folio 78



NEIL GALLETLY

and

LORNA MAY ISABEL GALLETLY

his wife

are

as joint tenants inter se

now seized of an Estate in Fee-simple, as tenant in common in one undivided

half part or share, subject nevertheless to such encumbrances, liens, and interests as are by

memorandum notified hereon, in All that piece of Land situated in the County of Clinton

Parish of Gayfield City of

Containing ten acres

more or less, as shown on the Plan hereon, and therein edged red, Being Portion 4

Saving Always to the Crown all the rights and interests reserved to it by Deed of Grant No. Vol. C317 Folio 200

In Witness whereof, I have hereunto signed my name and affixed my seal, this twentyeighth day of February One thousand nine hundred and seventytwo

Signed, Sealed, and Delivered in presence of

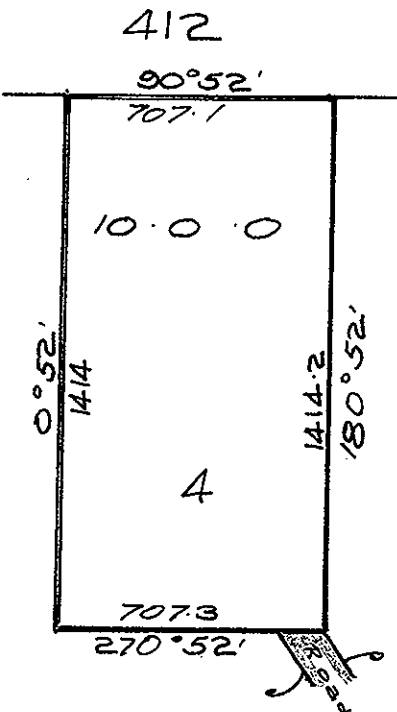
[Signature]



[Signature]

DEPUTY REGISTRAR OF TITLES
Central District Registry

Scale, 5 chains per inch



THE DESCRIPTION OF THE WITHIN LAND IS CONVERTED TO LOT 4

ON REGISTERED PLAN No. CTN 406

- 6 JUN 1986
DEP. REGISTRAR OF TITLES (CENTRAL DISTRICT)

TRANSFER of the whole of the land to Ian Neil Galletly

No. C 662524D PRODUCED 24 Dec 1997
RECORDED

Vol. C637 Fol. 114 -1 FEB 1993
DEP. REGISTRAR OF TITLES (Central District)

No. C 285332 Bill of Mortgage to Commonwealth Trading Bank of Australia
Produced 28 Feb 1972 at 2.15 p.m.
Registered 28 Feb 1972 at 1.57 p.m.
DEP. REGISTRAR OF TITLES (CENTRAL DISTRICT)

Ian Neil Galletly
at minor born 15 Jan 1955
now seized of an Estate in fee-simple in the within land.
Transfer No. C 308810 Produced 15 Nov 1974 at 12.4 p.m.
Registered 7 MAR 1974
DEP. REGISTRAR OF TITLES (CENTRAL DISTRICT)

No. C 308826 Bill of Mortgage to Commonwealth Trading Bank of Australia
Produced 15 Nov 1974 at 2.15 p.m.
Registered 15 Nov 1974 at 2.15 p.m.
DEP. REGISTRAR OF TITLES (CENTRAL DISTRICT)

Rel
C308809
The
C308810
28 Feb 1972

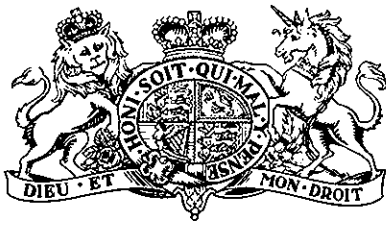
(C)

UNDIVIDED MORTGAGE

Dealing No. C 285331
Reference to previous
Volume Folio

C317 200

QUEENSLAND



[CERTIFICATE OF TITLE]

Register Book

VOL: C 378 FOLIO: 079



30378079

Vol. C 378 Folio 79

JAMES HARRIS GILBERTLY

is

now seised of an Estate in Fee-simple, as tenant in common in one undivided half part or share, subject nevertheless to such encumbrances, liens, and interests as are by

memorandum notified hereon, in All that piece of Land situated in the County of Clinton

Parish of Gayfield City of _____

Containing ten acres

more or less, as shown on the Plan hereon, and therein edged red, Being Portion 4

Saving Always to the Crown all the rights and interests reserved to it by Deed of Grant No. Vol. C317 Folio 200

In Witness whereof, I have hereunto signed my name and affixed my seal, this twentyeighth day of February One thousand nine hundred and seventytwo

Signed, Sealed, and Delivered in presence of

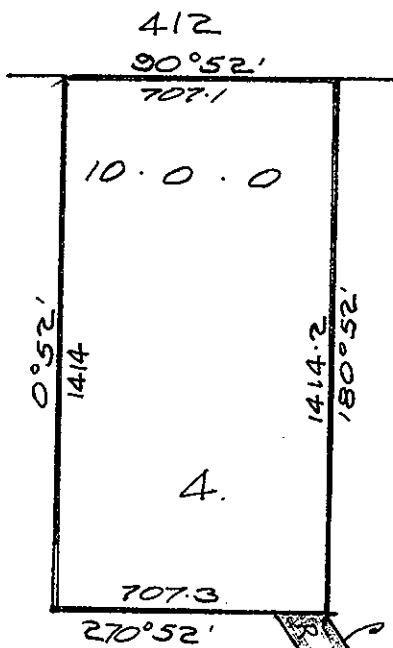
[Signature]

[Signature]



DEPUTY REGISTRAR OF TITLES
Central District Registry

Scale, 5 chains per inch



TRANSFER of the whole of the land to Ian Neil Galletly
No. C 662524D PRODUCED 24 Dec 1992
RECORDED
Vol. C 378
Fol. 79 -1 FEB 1993
DEP. REGISTRAR OF TITLES (Central District)

No. C 285332 Bill of Mortgage
to Commonwealth Trading Bank of Australia
Produced 3 Feb 1993
Registered 28 Feb 1993
DEP. REGISTRAR OF TITLES (CENTRAL DISTRICT)

No. C 308826 Bill of Mortgage
to Commonwealth Trading Bank of Australia
Produced 15 Nov 1992
Registered 15 Nov 1992
DEP. REGISTRAR OF TITLES (CENTRAL DISTRICT)

THE DESCRIPTION OF THE WITHIN LAND IS CONVERTED TO LOT 4
ON REGISTERED PLAN No. CTN406
- 6 JUN 1986
DEP. REGISTRAR OF TITLES (CENTRAL DISTRICT)

Rel
C308809
TR
C308810
mid
308826

[Form 1]



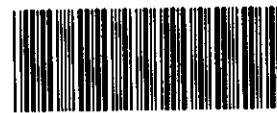
QUEENSLAND

Deed of Grant of Land

"The Land Acts, 1962 to 1967"

Acquired by PURCHASE

VOL: C 317 FOLIO: 200



30317200

Elizabeth the Second, by the Grace of God, of the United Kingdom, Australia, and her other Realms and Territories, Queen, Head of the Commonwealth, Defender of the Faith:—

To all to whom these Presents shall come, Greeting:

Whereas in conformity with the Laws and Regulations in force for the alienation of Crown Land in Our State of Queensland, RACHEL STIRRAT, spinster

has become entitled to a Deed of Grant in Fee-simple of the Land hereinafter described: NOW KNOW YE, in consideration of the premises and of the sum of FORTY-FIVE DOLLARS for Us, and on Our behalf, paid into the Office in Brisbane of the Department of Lands, or at any District Land Office of our said State, and in further consideration of the Quit-Rent hereinafter reserved, WE, with the advice of The Executive Council of Our said State, have granted, and for Us, Our Heirs and Successors, do hereby Grant unto the said RACHEL STIRRAT her Administrators and Assigns, subject to the Reservations hereinafter mentioned,

All That Parcel of Land in Our State, containing by admeasurement TEN ACRES being the same more or less, situated in the County of CLINTON Parish of GAYFIELD: PORTION FOUR. Being the land comprised in former Perpetual Country Lease No. 1391 (N.C.L.)

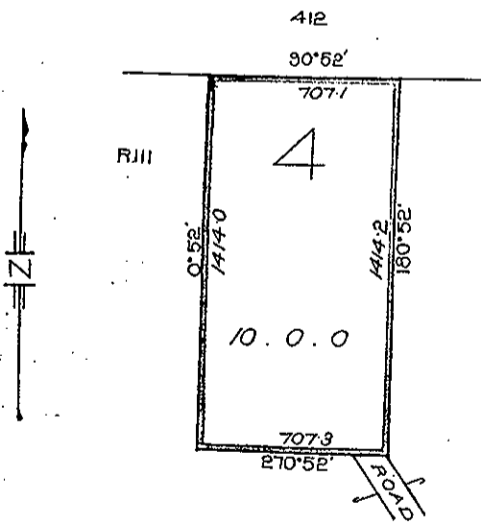
as delineated on plan of Survey catalogue No. Ctn. 406 deposited in the Survey Office and as shown edged red on diagram hereon To Hold unto the said RACHEL STIRRAT her Administrators with all the Rights and Appurtenances whatsoever thereto belonging,

and Assigns for ever, Yielding and Paying therefor Yearly unto Us, Our Heirs and Successors, the Quit-Rent of One Peppercorn for ever, if demanded: But Subject Nevertheless to the several Conditions and Reservations contained in and declared by "The Land Acts, 1962 to 1967", "The Mining on Private Land Acts, 1909 to 1965", and "The Petroleum Acts, 1923 to 1962": AND WE do hereby reserve unto Us, Our Heirs and Successors, all Gold and Minerals (the term "Minerals" to have the same meaning as in "The Mining on Private Land Acts, 1909 to 1965"), on and below the surface of the said Land, and all Mines of Gold and Minerals, on and below the surface of the said Land: AND WE do hereby also reserve unto Us, Our Heirs and Successors, and to such persons as shall from time to time be duly authorised by Us in that behalf, the free right and privilege of access, including ingress, egress, and regress, into, upon, over, and out of the said Land, for the purpose of searching for or working Gold and Minerals, or any of them, or Mines of Gold and Minerals, or any of them, in any part of the said Land: AND WE do hereby also reserve unto Us, Our Heirs and Successors, all Petroleum (the term "Petroleum" to have the same meaning as in "The Petroleum Acts, 1923 to 1962"), on or below the surface of the said Land: AND also all rights of access for the purpose of searching for, and for the operations of obtaining Petroleum, in any part of the said Land: AND also all rights of way for access and for pipe lines and other purposes requisite for obtaining and conveying Petroleum in the event of Petroleum being obtained in any part of the said Land: AND WE do also further reserve unto Us, Our Heirs and Successors, All Helium found in association with Petroleum in any part of the said Land: IN Testimony Whereof We have caused this Our Grant to be Sealed with the Seal of Our said State.

WITNESS Our Trusty and Well-beloved His Excellency the Honourable SIR ALAN JAMES MANSFIELD, Knight Commander of Our Most Distinguished Order of Saint Michael and Saint George, Governor in and over Our State of Queensland and its Dependencies in the Commonwealth of Australia, at Government House, Brisbane, in Queensland aforesaid, this twenty-second day of June in the sixteenth year of Our Reign, and in the year of Our Lord One thousand-nine hundred and sixty-seven.

ENTERED as Country Land in the Register Book, Vol. 343, Folio 251, in the Survey Office, Brisbane, this twenty-eighth day of June, 1967.

Acting SURVEYOR-GENERAL.




Scale 5 Chains to an Inch. Plan Cat. No. Ctn. 406.

ENTERED in the Register Book, Vol. 317 Folio 200, this, fourth day of July 1967

No. C 285331 Transfer of the whole of the land to
Neil Galletly, Lorna May Seabel Galletly
and James Stewart Galletly Produced
8 Feb 1972 at 12:15 pm, Registered 16 Feb 1972

Cancelled vide 1
Vol. 378
Fol. 78/79

A. Byrne
DEP. REGISTRAR OF TITLES
CENTRAL DISTRICT



[Signature]
DEPUTY REGISTRAR OF TITLES
CENTRAL DISTRICT

[Signature]
(100)
(100)
alay 92 72

CURRENT TITLE SEARCH

ENVIRONMENT AND RESOURCE MANAGEMENT, QUEENSLAND

Request No: 7663683

Search Date: 05/10/2009 15:02

Title Reference: 30496212

Date Created: 24/06/1982

REGISTERED OWNER

Dealing No: 711578278 15/04/2008

QUEENSLAND ENERGY RESOURCES LIMITED A.C.N. 107 882 057

ESTATE AND LAND

Estate in Fee Simple

LOT 40	CROWN PLAN DS289	
	County of DEAS THOMPSON	Parish of TARGINIE
	Local Government: GLADSTONE	
LOT 41	CROWN PLAN DS290	
	County of DEAS THOMPSON	Parish of TARGINIE
	Local Government: GLADSTONE	
LOT 42	CROWN PLAN DS290	
	County of DEAS THOMPSON	Parish of TARGINIE
	Local Government: GLADSTONE	

For exclusions / reservations for public purposes refer to Plan CP DS289

EASEMENTS, ENCUMBRANCES AND INTERESTS

1. Rights and interests reserved to the Crown by
Deed of Grant No. 30496212 (POR 40)
(POR 41)
(POR 42)

ADMINISTRATIVE ADVICES - NIL

UNREGISTERED DEALINGS - NIL

CERTIFICATE OF TITLE ISSUED - No

** End of Current Title Search **

COPYRIGHT THE STATE OF QUEENSLAND (ENVIRONMENT AND RESOURCE MANAGEMENT) [2009]
Requested By: D APPLICATIONS CITEC CONFIRM

HISTORICAL TITLE SEARCH

ENVIRONMENT AND RESOURCE MANAGEMENT, QUEENSLAND

Request No: 7700889

Search Date: 09/10/2009 10:57

Title Reference: 30496212

Date Created: 24/06/1982

REGISTERED OWNER

Dealing No: 711578278 15/04/2008

QUEENSLAND ENERGY RESOURCES LIMITED A.C.N. 107 882 057

TRANSFER No 711578278

QUEENSLAND ENERGY RESOURCES LIMITED A.C.N. 107 882 057

Lodged at 12:54 on 15/04/2008

ESTATE AND LAND

Estate in Fee Simple

LOT 40 CROWN PLAN DS289
County of DEAS THOMPSON Parish of TARGINIE
Local Government: GLADSTONE

LOT 41 CROWN PLAN DS290
County of DEAS THOMPSON Parish of TARGINIE
Local Government: GLADSTONE

LOT 42 CROWN PLAN DS290
County of DEAS THOMPSON Parish of TARGINIE
Local Government: GLADSTONE

For exclusions / reservations for public purposes refer to Plan CP DS289

EASEMENTS, ENCUMBRANCES AND INTERESTS

1. RELEASE No 711578238
MORTGAGE: 602661295 (C438414)
Lodged at 12:49 on 15/04/2008
2. WITHDRAWAL No 701537873
of
CAVEAT: 701379021
Lodged at 10:36 on 09/09/1996
3. CORRECTION No 701431288
CORRECTING THE ENDORSEMENT FOR DEALING 701379021 TO INCLUDE:
LOT 42 ON DS290
Lodged at 09:41 on 10/07/1996
4. CAVEAT No 701379021 CANCELLED BY 701537873
by
MICHAEL SHANE MCNAMARA
so far as relates to Lot 42 on DS290
Lodged at 15:12 on 25/06/1996

HISTORICAL TITLE SEARCH

ENVIRONMENT AND RESOURCE MANAGEMENT, QUEENSLAND

Request No: 7700889

Search Date: 09/10/2009 10:57

Title Reference: 30496212

Date Created: 24/06/1982

EASEMENTS, ENCUMBRANCES AND INTERESTS

5. CORRECTION No 701368943
CORRECTING THE LAND DESCRIPTION BY DELETING THE EXCLUSIONS
INDICATOR
Lodged at 14:31 on 19/06/1996
6. MORTGAGE No 602661295 (C438414) CANCELLED BY 711578238
TO COMMONWEALTH TRADING BANK OF AUSTRALIA
UNDER SECTION 285 OF THE LAND ACT 1962-1977
Lodged at 00:00 on 05/07/1982
7. CAVEAT No 701609682 FULLY WITHDRAWN ON 21/11/1996
Lodged at 10:18 on 18/10/1996
8. Rights and interests reserved to the Crown by
Deed of Grant No. 30496212 (POR 40)
(POR 41)
(POR 42)

ADMINISTRATIVE ADVICES - NIL

UNREGISTERED DEALINGS - NIL

CERTIFICATE OF TITLE ISSUED - No

Caution - Charges do not necessarily appear in order of priority

** End of Historical Title Search **

COPYRIGHT THE STATE OF QUEENSLAND (ENVIRONMENT AND RESOURCE MANAGEMENT) [2009]
Requested By: D APPLICATIONS CITEC CONFIRM



QUEENSLAND Deed of Grant of Land

Land Act 1962-1982

VOL: C 496 FOLIO: 212



30496212

Elizabeth the Second, by the Grace of God, Queen of Australia, and Her other Realms and Territories, Head of the Commonwealth:—

To all to whom these Presents shall come, Greeting:

We, with the advice of the Executive Council of Our State of Queensland, and in pursuance of the provisions of the Land Act 1962-1982

do hereby Grant in fee simple unto

DONALD WILLIAM DAVEY

All that Parcel of Land in Our said State,

containing by admeasurement **451.234 HECTARES,** exclusive of
3.642 hectares for an esplanade 30.175 metres wide in portion 40

be the same more or less, situated in the County of **DEAS THOMPSON** Parish of **TARGINIE**
PORTIONS FORTY, FORTY-ONE AND FORTY-TWO

as delineated on plan of Survey Catalogue No **Ds.289 & Ds.290** deposited in the Office of the Department of Mapping and Surveying and reproduced in whole or in part hereunder, SUBJECT TO the Reservations and Conditions hereinafter specified, and such other Reservations and Conditions as may be contained in and declared by the Laws of Our said State.

Specified Reservations:—

- (a) All minerals (as defined by the Mining Act 1968-1980) on and below the surface of the land; and
(b) The right of access for the purpose of searching for and working any mines (as defined by the Mining Act 1968-1980) in any part of the land.
- (a) All petroleum (as defined by the Petroleum Act 1923-1981) on or below the surface of the land; and
(b) All rights of access for the purpose of searching for and for the operations of obtaining petroleum in any part of the land, and all rights of way for access and for pipe-lines and other purposes requisite for obtaining and conveying petroleum in the event of petroleum being obtained in any part of the said land.

Specified Conditions:—

IN TESTIMONY WHEREOF, We have caused this Our Grant to be Sealed with the Seal of Our said State.

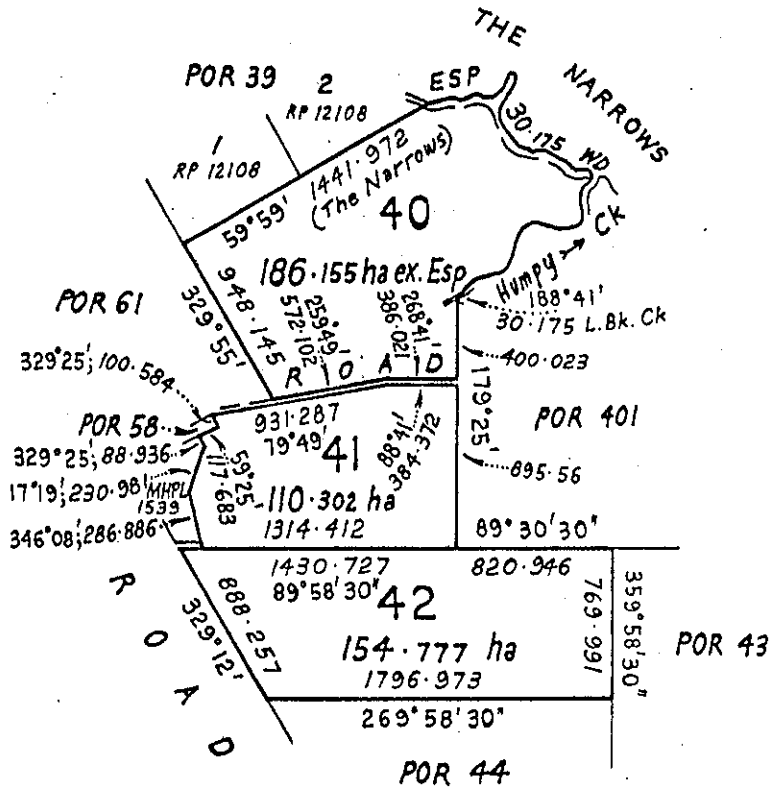
WITNESS Our Trusty and Well-beloved His Excellency Commodore Sir JAMES MAXWELL RAMSAY, Knight Commander of the Most Distinguished Order of Saint Michael and Saint George, Commander of the Most Excellent Order of the British Empire, upon whom has been conferred the Decoration of the Distinguished Service Cross, and Commodore in the Royal Australian Navy (Retired), Governor in and over the State of Queensland and its Dependencies in the Commonwealth of Australia at Government House, Brisbane, in Queensland at present this **Third** day of **June** in the thirty-**first** year of Our Reign and in the year of Our Lord One Thousand nine hundred and eighty-**two**.

ENTERED as **Country** Land in the Register Book, Vol. **472** Folio **152** in the Department of Mapping and Surveying, Queensland
this **Ninth** day of **June** **1982**.

Lands Department File Reference:—

PLS.2192 Gladstone

Surveyor General




TOTAL DEED AREA
451.234 ha ex Esp in
Por 40

ENTERED in the Register Book, Vol. **496** Folio **212** this **24th** day of **June** 19 **82**
9150-31 & 34

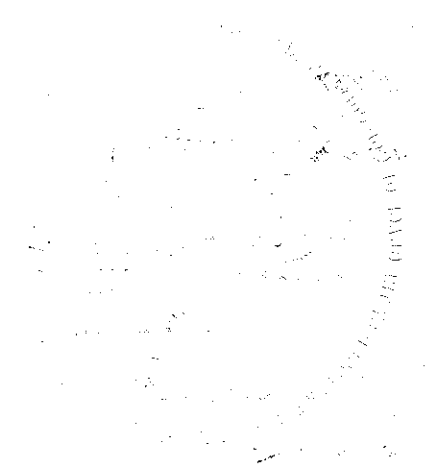

REG.
Rob
Registrar of Titles
CENTRAL DISTRICT

mortgage certificate

MORTGAGE No. 159641 under Sec. 285 of the Land Act
1962-1977
to Commonwealth Trading Bank of
Australia Vide
No. C438414
ENTERED. **5 JUL 1982**
K. J. O'Connell
DEP. REGISTRAR OF TITLES
(Central District)



THE DESCRIPTION OF THE WITHIN LAND IS CONVERTED
TO LOT(S) 40 on Plan No. DS289
and lots 41 and 42
ON REGISTERED PLAN No. DS290
28 FEB 1986 *A. J. O'Connell*
DEP. REGISTRAR OF TITLES
(CENTRAL DISTRICT)



CURRENT TITLE SEARCH

ENVIRONMENT AND RESOURCE MANAGEMENT, QUEENSLAND

Request No: 7663719

Search Date: 05/10/2009 15:04

Title Reference: 30040098

Date Created: 06/01/1886

REGISTERED OWNER

Dealing No: 711248125 06/12/2007

CRAIG WELLS BUTLER

BRIAN WELLS BUTLER

PERSONAL REPRESENTATIVE

UNDER INSTRUMENT 711248125

ESTATE AND LAND

Estate in Fee Simple

LOT 401

CROWN PLAN DT4026

County of DEAS THOMPSON

Parish of TARGINIE

Local Government: GLADSTONE

For exclusions / reservations for public purposes refer to Plan CP DT4026

EASEMENTS, ENCUMBRANCES AND INTERESTS

1. Rights and interests reserved to the Crown by
Deed of Grant No. 10583046 (POR 401)
2. SUBSTITUTE TITLE No 601261812 (C491018) 23/01/1985
A PROVISIONAL DEED OF GRANT
WAS ISSUED ON 27 MAR 1985

ADMINISTRATIVE ADVICES - NIL

UNREGISTERED DEALINGS - NIL

CERTIFICATE OF TITLE ISSUED - No

Caution - Charges do not necessarily appear in order of priority

** End of Current Title Search **

COPYRIGHT THE STATE OF QUEENSLAND (ENVIRONMENT AND RESOURCE MANAGEMENT) [2009]

Requested By: D APPLICATIONS CITEC CONFIRM

HISTORICAL TITLE SEARCH

ENVIRONMENT AND RESOURCE MANAGEMENT, QUEENSLAND

Request No: 7701136

Search Date: 09/10/2009 11:09

Title Reference: 30040098

Date Created: 06/01/1886

REGISTERED OWNER

Dealing No: 711248125 06/12/2007

CRAIG WELLS BUTLER

BRIAN WELLS BUTLER PERSONAL REPRESENTATIVE

UNDER INSTRUMENT 711248125

TRANSMISSION BY DEATH No 711248125

CRAIG WELLS BUTLER

BRIAN WELLS BUTLER PERSONAL REPRESENTATIVE

UNDER INSTRUMENT 711248125

Lodged at 13:24 on 06/12/2007

ESTATE AND LAND

Estate in Fee Simple

LOT 401

CROWN PLAN DT4026

County of DEAS THOMPSON Parish of TARGINIE

Local Government: GLADSTONE

For exclusions / reservations for public purposes refer to Plan CP DT4026

EASEMENTS, ENCUMBRANCES AND INTERESTS

1. SUBSTITUTE TITLE No 601261812 (C491018)

A PROVISIONAL DEED OF GRANT

WAS ISSUED ON 27 MAR 1985

Lodged at 00:00 on 23/01/1985

2. Rights and interests reserved to the Crown by

Deed of Grant No. 10583046 (POR 401)

ADMINISTRATIVE ADVICES

Dealing	Type	Lodgement Date	Status
706750423	APPT ADMIN	30/06/2003 11:26	NOT CURRENT
	GUARDIANSHIP AND ADMINISTRATION ACT 2000		

UNREGISTERED DEALINGS - NIL

CERTIFICATE OF TITLE ISSUED - No

Caution - Charges do not necessarily appear in order of priority

** End of Historical Title Search **

COPYRIGHT THE STATE OF QUEENSLAND (ENVIRONMENT AND RESOURCE MANAGEMENT) [2009]

Requested By: D APPLICATIONS CITEC CONFIRM



No. 61780
County Deas Thompson
Parish Targuinia
Date of Purchase } 10th September 1878
Area 640 acres

QUEENSLAND.

A. LAND PURCHASE.

140/98

VICTORIA, by the Grace of God, of the United Kingdom of Great Britain and Ireland, Queen, Defender of the Faith, and so forth:—

TO ALL to whom these Presents shall come, Greeting.

WHEREAS, in conformity with the Regulations now in force for the Alienation of Crown Lands in Our Territory of Queensland, Frederick Augustus Morgan of _____ has become the Purchaser _____ of the Land hereinafter described, for the Sum of One hundred and sixty pounds Sterling: Now Know Ye, That for and in consideration of the said Sum, for and on Our behalf well and truly paid into the Colonial Treasury of Our said Territory before these Presents are issued, And in further consideration of the Quit-Rent hereinafter reserved, We, with the advice of the Executive Council of Queensland have Granted, and for Us, Our Heirs and Successors, do hereby Grant unto the said Frederick Augustus Morgan his Heirs and Assigns, subject to the several and respective Reservations hereinafter mentioned, All that _____

_____ Piece or Parcel of Land in our said Colony containing by Admeasurement Six hundred and forty acres be the same more or less, situated in the County of Deas Thompson and Parish of Targuinia Section 401 Gladstone district Portion Four hundred and one Commencing on the right bank of Humpy Creek at a point ten links north from a post bearing 325° and distant sixty six links from a Bloodwood Tree marked H01 and bounded thence on the west by a line bearing South Sixty five Chains and forty three links on the South by a line bearing East eighty Chains on the East by a line bearing North Seventy four Chains and eighty links to the Narrows and passing through a post seven links from High water mark on the North by the said High water mark Northwesterly to the Confluence of Humpy Creek and thence by that creek upwards to the point of commencement. Inclusive of Sixteen acres reserved for roads purposes. Being the land selected under the 14th section of the Crown Lands Alienation Act of 1868.

with all the Rights and Appurtenances whatsoever thereto belonging. To Hold unto the said Frederick Augustus Morgan his Heirs and Assigns

for ever, Yielding and Paying therefor Yearly unto Us, Our Heirs and Successors, the Quit-Rent of One Peppercorn for ever, if demanded: Provided Nevertheless, and We do hereby Reserve unto Us, Our Heirs and Successors, all such parts and so much of the said Land as may hereafter be required for making Public Ways, Canals, or Railroads, in, over, and through the same, to be set out by Our Governor for the time being of Our said Colony, or some person by him authorised in that respect; And also all Sand, Clay, Stone, Gravel, and Indigenous Timber, and all other Materials, the natural produce of the said Land, which may be required at any time or times hereafter for the construction and repair of any Public Ways, Bridges, Canals, and Railroads, or any Fences, Embankments, Dams, Sewers, or Drains, necessary for the same, together with the right of taking and removing all such Materials; And we do hereby further Reserve unto Us, Our Heirs and Successors, the right of full and free ingress, egress, and regress, into, out of, and upon the said Land, for the several purposes aforesaid: In Testimony Whereof We have caused this Our Grant to be Sealed with the Seal of Our said Colony.

WITNESS Our Trusty and Well-beloved Sir Anthony Musgrave, Knight, Grand Cross of the most Distinguished Order of St. Michael and St. George, Companion and Commander-in-Chief of the Colony of QUEENSLAND and its Dependencies, at Government House, Brisbane in QUEENSLAND aforesaid, this fourteenth day of December in the forty ninth year of Our Reign, and in the year of our Lord One thousand eight hundred and eighty five (Signed) Anthony Musgrave

ENTERED in the Register Book day of January 1886

Vol. 583, Folio 40, this fourth

(Signed) J. Bourne REGISTRAR of Titles

Annexed to Deed of Grant N° 61780 Vol. 40 Fol. 98 this 25 day of July 1972 for the purpose of recording memorials

A. Bayne



DEP. REGISTRAR OF TITLES
(CENTRAL DISTRICT)

Frank William Wells Butler
is
now seized of an Estate in fee-simple in the within land.
Transfer No. C289598 Produced 4 July 1972 at 12:20pm.
Registered 25 July 1972
Subject to Bills of Mortgage
N°s. C26824 and C228591

A. Bayne

DEP. REGISTRAR OF TITLES
(CENTRAL DISTRICT)

No. C491018 PRODUCED 23 Jan 1985
A. PROVISIONAL Deed of Grant
was issued on 27 MAR 1985

A. Bayne

ACTING DEPUTY REGISTRAR OF TITLES
(CENTRAL DISTRICT)

THE DESCRIPTION OF THE WITHIN LAND IS CONVERTED
TO LOT 401
ON REGISTERED PLAN No. DT4026
25 JUL 1986

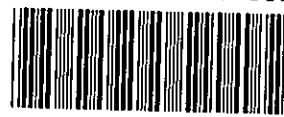
A. Bayne

DEP. REGISTRAR OF TITLES
(CENTRAL DISTRICT)

Rel C 292242
Rel C 292243
Reg Prov
C491018

Certificate of Title.

VOL: C 233 FOLIO: 056



30233056

(C)

QUEENSLAND



No. C. 35553

Reference to Previous

Volume	Folio
47	238a

Register Book, Vol. 233 Folio 56

LESLIE JOHN CAMPBELL

of _____ pursuant to Memorandum
of Conveyance No. C. 134022 produced the thirteenth day of November 1947
registered the sixth day of June 1951, is now seized _____ of an Estate
in Fee-simple, subject nevertheless to such encumbrances, liens, and interests as are by memorandum notified hereon, in **All**
that piece of Land situated in the County of Raglan Parish of Dumgree
containing Eleven acres one rood nine perches

_____ more or less, as shown on the Plan hereon, and therein edged red,
Being Subdivision 2 of portion 329

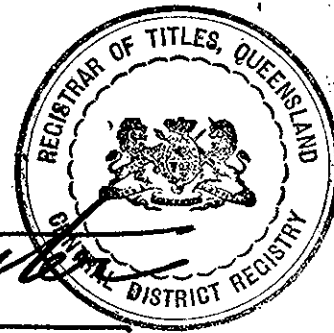
on Plan Cat. No. 5812 deposited in the Office of the Deputy Registrar of Titles, Rockhampton,
which said piece of Land is part of the Portion marked 329 delineated in the Public Map
of the said Parish deposited in the Office of the Surveyor-General, originally granted by Deed of Grant
No. 70462

Saving Always to the Crown all the rights and interests reserved to it by the said Deed of Grant.

[Signature] In Witness whereof, I have hereunto signed my name and affixed my seal, this twentyseventh
day of June One thousand nine hundred and fiftyone

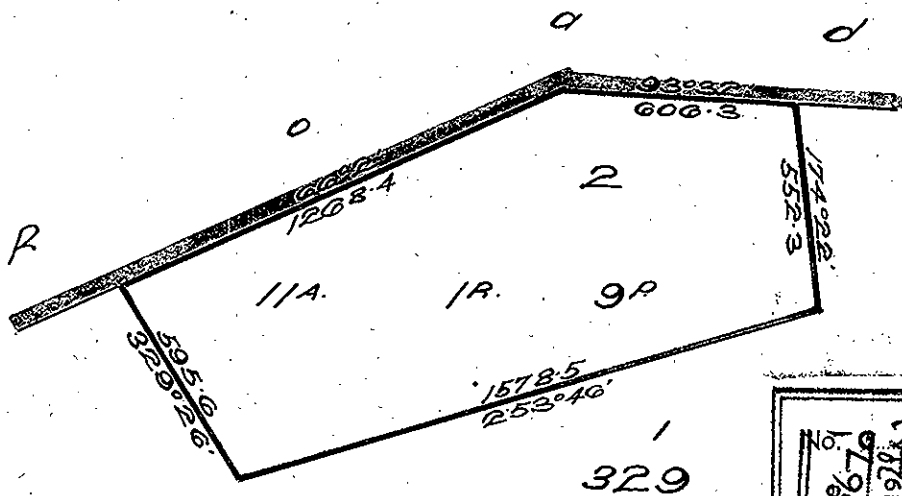
Signed, Sealed, and Delivered, the 27th.
day of June 1951, in presence of

[Signature]



[Signature]
DEPUTY REGISTRAR OF TITLES,
Central District Registry.

Parish of Dumgree



Scale, 5 chains per inch.

No. 232743 Bill of Mortgage.....
to Commonwealth Trading Bank of Australia
19.56 at 1.40 p.m.
19.66
[Signature]
DEP. REGISTRAR OF TITLES
(CENTRAL DISTRICT)

RELEASED
No. C. 35553
Prod. 11.23
at 11.23
Regd. 14 SEP 1951

REGISTRAR OF TITLES
QUEENSLAND

OVER

TRANSMISSION BY DEATH. The registered proprietor having died on 15 Jan 1975 the within land is transmitted to Catherine Patricia Campbell and Alan Bruce John Campbell as devisees in trust under Will dated 18 Jan 1971 No. C. 374077 PRODUCED 27 Nov 1978 at 11.46 a.m. ENTERED 23 JAN 1979 Subject to Bill of Mortgage No C257143. *Janey*

ACTING DEP. REGISTRAR OF TITLES (Central District)

*17/37 37077
17/37 37078*

BILL OF MORTGAGE to Commonwealth Savings Bank of Australia No. C. 638651T PRODUCED 12 MAR 1992 REGD. 16 MAR 1992 *J.P. Redwood* DEP. REGISTRAR OF TITLES (Central District)

Alan Sachse John Campbell is now seized of an Estate in fee-simple in the within land TRANSFER No. C. 374078 PRODUCED 27 MAR 1978 at 11.46 a.m. REGD. 29 MAR 1979 Subject to Bill of Mortgage No C257143. *Janey*

ACTING DEP. REGISTRAR OF TITLES (Central District)

Mortgage C374078

BILL OF MORTGAGE to Rural Reconstruction Board No. C. 385967 PRODUCED 24 AUG 1979 at 11.46 a.m. REGD. 24 AUG 1979 Subject to Bill of Mortgage No C257143. *Boch*

DEP. REGISTRAR OF TITLES (Central District)

*Rel C385967
Mortgage C385968*

BILL OF MORTGAGE to Australia and New Zealand Banking Group Limited No. C. 385968 PRODUCED 11 Sep 1979 at 11.46 a.m. REGD. 14 SEP 1979 Subject to Bill of Mortgage No C257143. *Boch*

DEP. REGISTRAR OF TITLES (Central District)

*Rel C440444
rel C440445
th C440446*

dead Name Jensen is now seized of an Estate in fee-simple in the within land TRANSFER No. C. 440446 PRODUCED 4 Aug 1982 at 11.46 a.m. REGD. 25 AUG 1982 *Boch*

DEP. REGISTRAR OF TITLES (Central District)

THE DESCRIPTION OF THE WITHIN LAND IS CONVERTED TO LOT 2 ON REGISTERED PLAN No. 6058/2 9 JAN 1986 *J.P. Redwood* DEPUTY REGISTRAR OF TITLES (CENTRAL DISTRICT)

Kenneth O'Neill and Peter John Roche as personal representatives are now registered proprietors in fee simple. TRANSMISSION BY DEATH NO. C562504L PRODUCED 22 NOV 1988 REGISTERED 22 DEC 1988 *Depler* DEPUTY REGISTRAR OF TITLES (CENTRAL DISTRICT)

Clifford Ronald Price and Robin Anne Price as joint tenants are now registered proprietors in fee simple. TRANSFER NO. C562505T PRODUCED 22 NOV 1988 REGISTERED 22 DEC 1988 *Depler* DEPUTY REGISTRAR OF TITLES (CENTRAL DISTRICT)

Jan John Grant and Susan Marie Grant as joint tenants are now registered proprietors in fee simple. TRANSFER No. C638650L PRODUCED 12 MAR 1992 RECORDED 16 MAR 1992 *J.P. Redwood* DEPUTY REGISTRAR OF TITLES (CENTRAL DISTRICT)



URS Australia Pty Ltd
Level 16, 240 Queen Street
Brisbane, QLD 4000
GPO Box 302, QLD 4001
Australia

T: 61 7 3243 2111
F: 61 7 3243 2199

www.ap.urscorp.com