

**NOTES Dajarra Road to Dugal River Mine 220kV – Single Circuit Pole**  
 It is proposed to use pole structures for the single circuit 220kV line installed with 1xSulphur AAAC phase conductors and Twin OPGW-A.

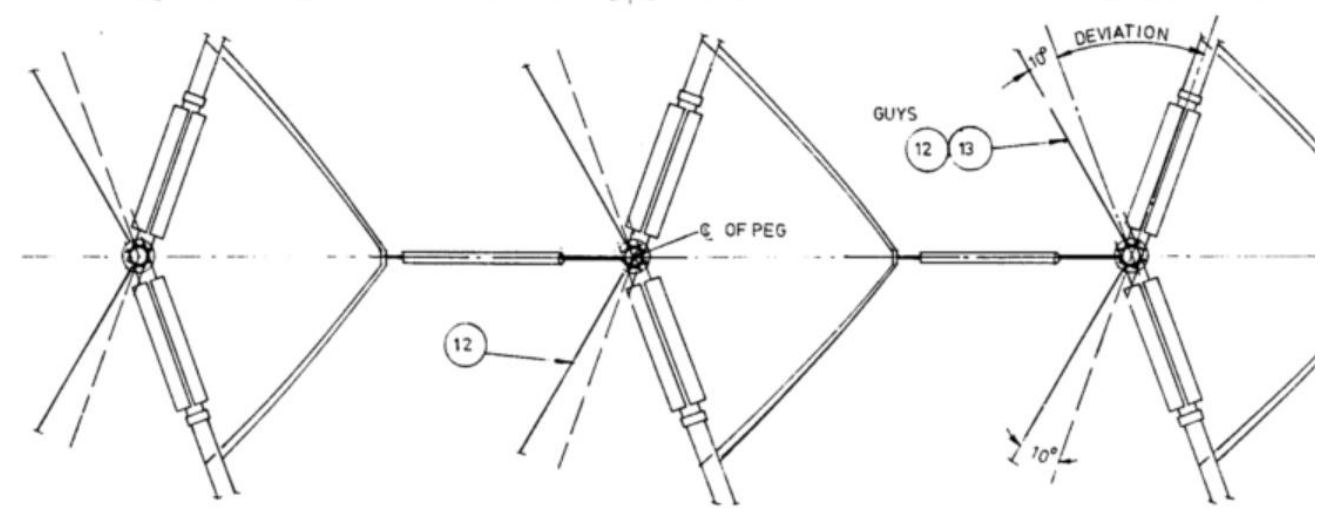
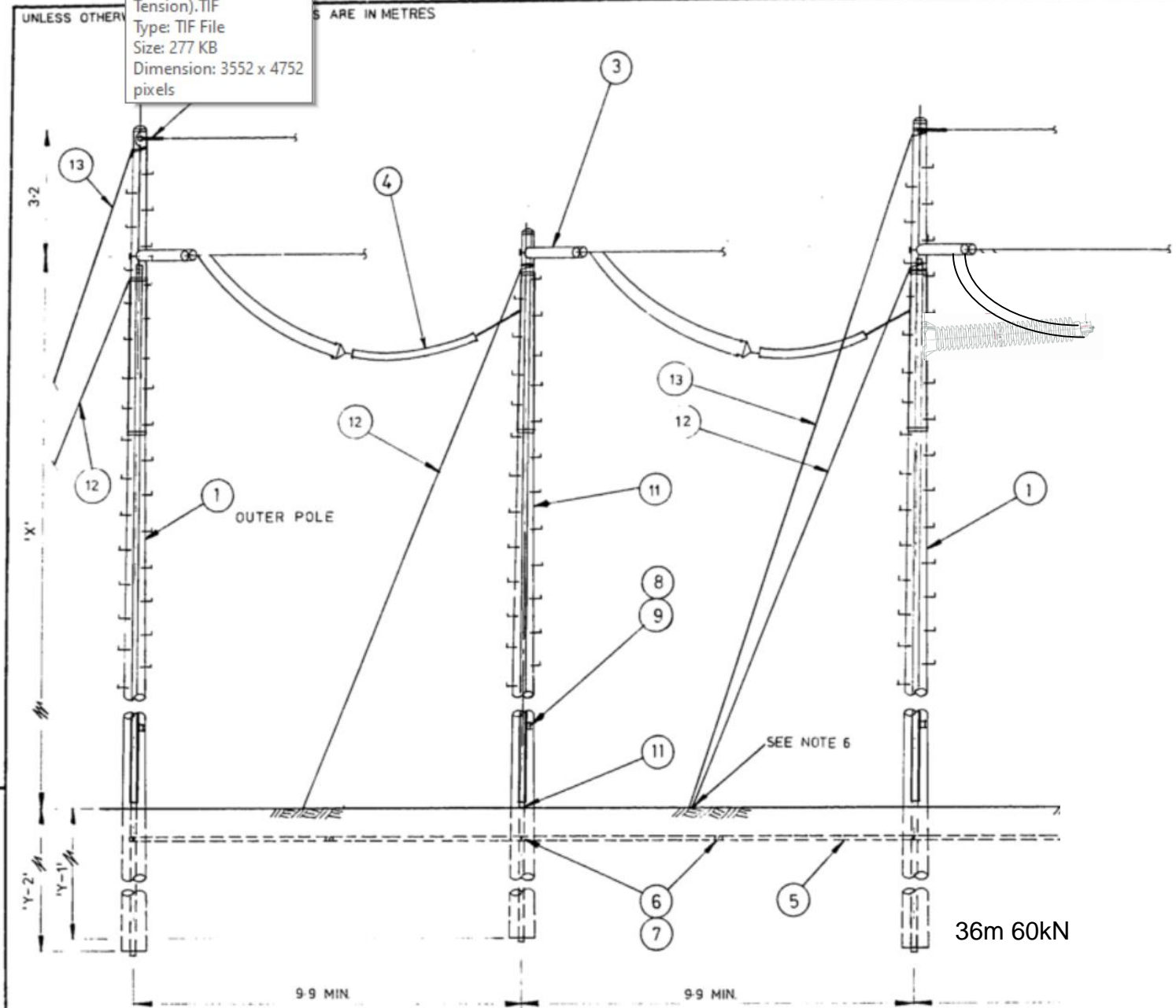
Outlines of the Pole Structures (Tension and Suspension are attached).

- To complete this connection the following will be required:
- A) 5 x Tension Single Pole Structures
  - B) 6 x Suspension Pole Structures
  - C) 2 x 3 Concrete Pole Structures (under pass) with 12 guys

Line Route length: 4km

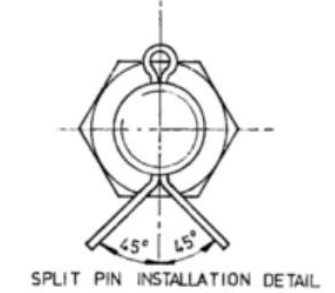
AMENDMENTS			SKETCHED BY		STATUS	United Group Limited			
			REVIEWED BY			<b>CuString 2.0 Project</b>			
			APPROVED BY		<b>VISIO Sketch</b>	Dugal River Mine Connection			
			DATE	15 April 2021		<b>A3</b>	PREFIX	NUMBER	SHEET

1L-144730\_00 (2117 - Tension).TIF  
 Type: TIF File  
 Size: 277 KB  
 Dimension: 3552 x 4752 pixels



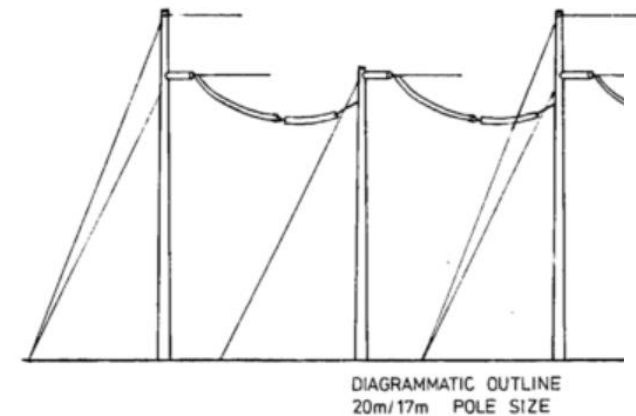
- 6. BOTH HEAVY GUY & STANDARD GUY TO HAVE A COMMON CONCRETE FOUNDATION EXCAVATE & SET UP A HEAVY GUY G-M5 DRG. 141219 A2 & ONE STANDARD GUY G-M2 DRG. 141216 A2 SIDE BY SIDE SUCH THAT WHEN THE CONCRETE IS PLACED BOTH WILL BE JOINED AS ONE UNIT.
- 7. ALL ITEMS PROVIDING FOR THE USE OF A SPLIT PIN MUST BE FITTED WITH A STRAIGHT STAINLESS STEEL SPLIT PIN & INSTALLED IN ACCORDANCE WITH DETAIL SHOWN

- NOTES:**
- 1. POLE FOUNDATIONS ARE TO BE IN ACCORDANCE WITH DRG. 141181 A3 UNLESS OTHERWISE SPECIFIED IN LINE SCHEDULE.
  - 2. STRUCTURE IS TO BE ERECTED SO THAT THE TOPS OF POLES ARE LEVEL.
  - 3. ALL BOLTS THROUGH TIMBER ARE TO BE COATED WITH BITUMINOUS PAINT.
  - 4. GALVANISED EARTHING STRIP IS TO BE BURIED IN ACCORDANCE WITH NOTE 3 ON DRG. NO. 141226 A3
  - 5. THE FOLLOWING INFORMATION IS TO BE OBTAINED FROM THE LINE SCHEDULE:
    - a/ ORIENTATION OF STRUCTURE.
    - b/ POLE LENGTHS.
    - c/ STRUCTURE SUB TYPE.
    - d/ SPECIAL FOUNDATION REQUIREMENTS.
    - e/ CONDUCTOR & O.H.E.W. DETAILS.



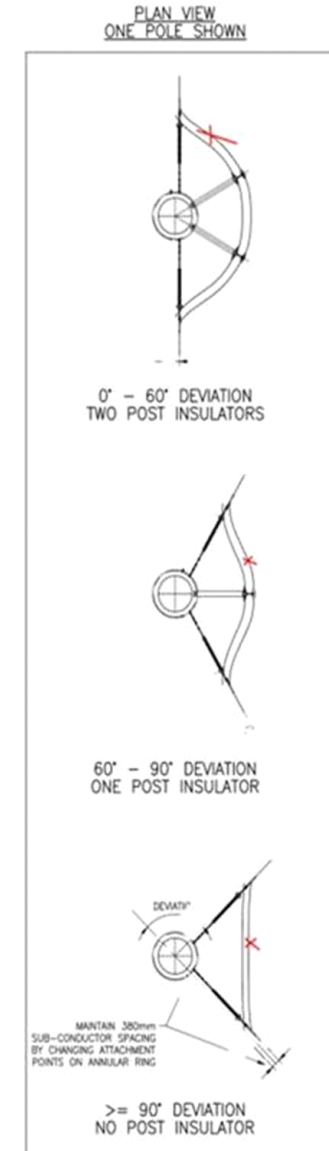
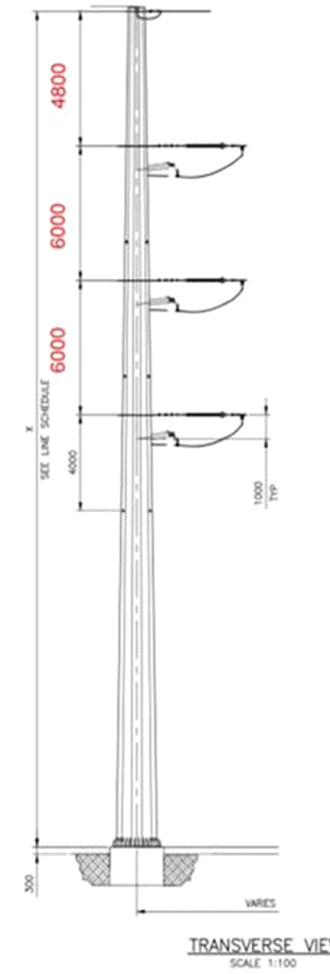
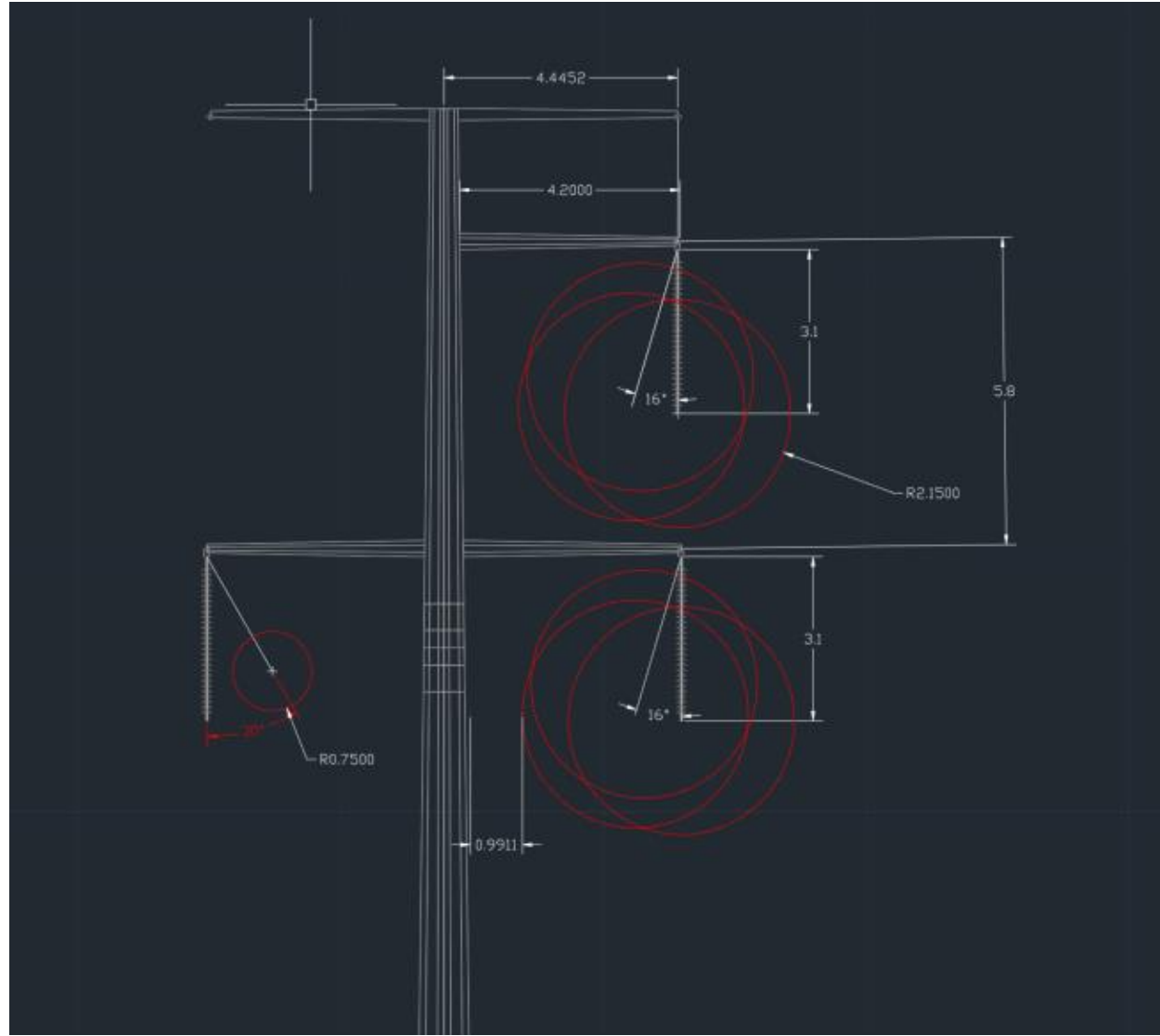
**TABLE 1**

POLE SIZE (m)		DIMENSIONS (m)		
LONG	SHORT	'X'	'Y-2'	'Y-1'
20.0	17.0	14.2	2.6	2.3
21.5	18.5	15.65	2.65	2.35



REQD	S/L No.	ITEM	DRG. No.	DESCRIPTION	MAT'L.
	13	141210 A2		GUY ARRGT TYPE G-M2	
	12	141211 A2		GUY ARRGT TYPE G-M5	
	11	144761 A2		POLE ASSEMBLY ARRGT	
	10	141194 A2		O.H.E.W. ARRGT. EWT-M1	
AS REQD		LM 54 184	9	NAIL 40mm x 2.8 mm CLOUT HEAD	S. GALV.
AS REQD		LM 59 500	8	144223 A3	AL. ALLOY
	7	WA 80 013	7		SP ST. GALV.
	6	NA01 262	6	M12 X 30 HEX. HD. BOLT & NUT	S. GALV.
	5	LM 37 061	5	140950 A3	S. GALV.
	4		4	167287 A2	
	3		3	140049 A2	
	2		2	144758 A2	
	1		1	144760 A2	

AMENDMENTS			SKETCHED BY		STATUS	United Group Limited				
			REVIEWED BY			<b>CuString 2.0 Project</b>				
			APPROVED BY		<b>VISIO</b> <b>Sketch</b>	Dajarra to Dugal River Mine				
			REFERENCE DRAWINGS	DATE		15 April 2021	220kV Tension Pole Structure			
						<b>A3</b>	PREFIX	NUMBER	SHEET	AMDT



AMENDMENTS				SKETCHED BY		STATUS	United Group Limited				
				REVIEWED BY			<b>CuString 2.0 Project</b> Dajarra to Dugal River Mine 220kV Suspension & Tension Steel Pole Structures				
				APPROVED BY		<b>VISIO</b> <b>Sketch</b>	<b>A3</b>				
				REFERENCE DRAWINGS	DATE			15 April 2021	PREFIX	NUMBER	SHEET