

# COPPERSTRING EIS

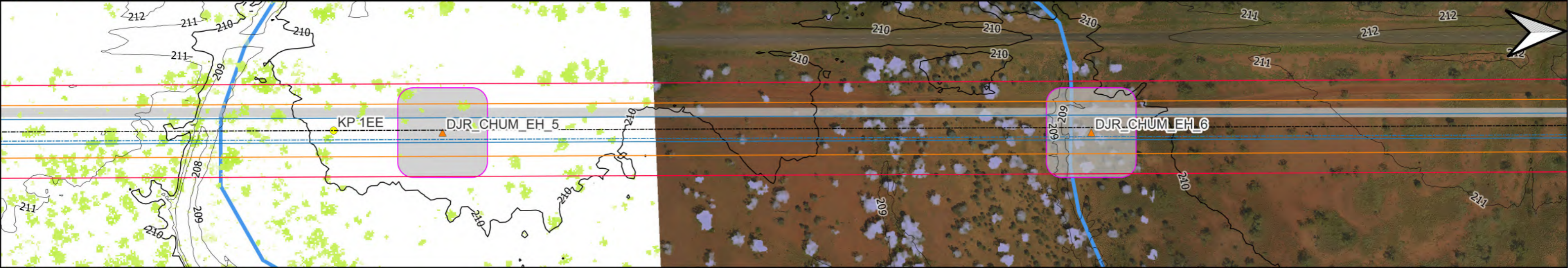
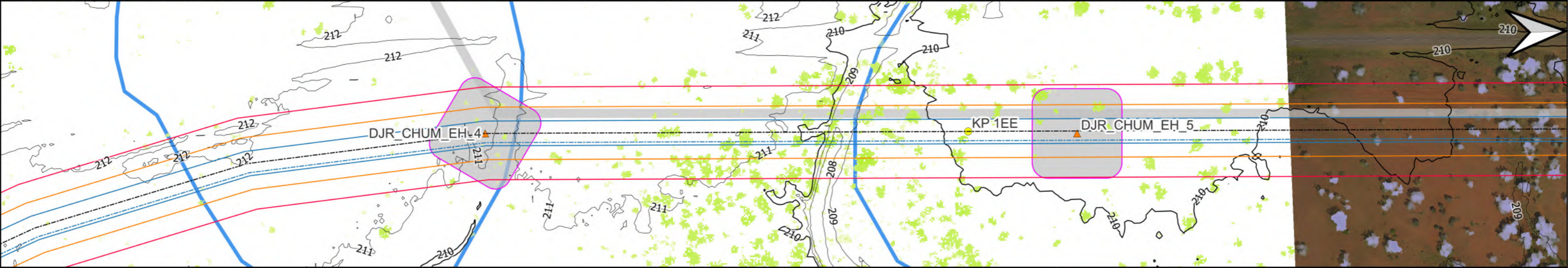
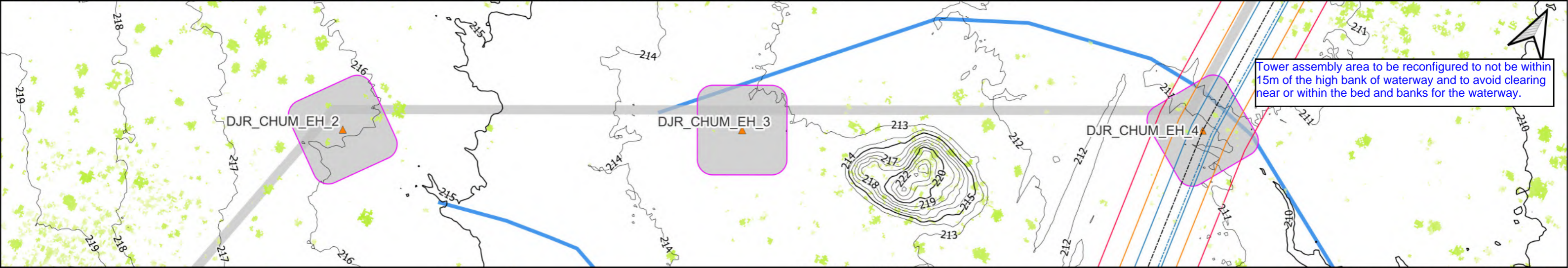
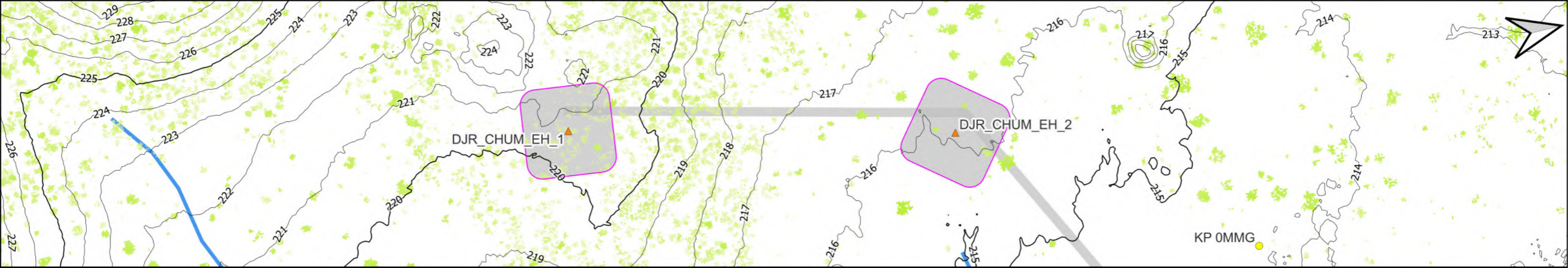
## Attachment F - Vegetation Clearing Works plans

### Dajarra Road to Chumvale

Legend		
▲ Tower Locations	— Contours (5 m)	■ Access Track Footprint
● Alignment KP	□ Easement	■ Dense Vegetation
● Conductor Blowout	□ Potential Conductor Blowout Zone	□ Conductor Blowout
● Conductor Blowout	□ Approximate Crossarm Width	□ Conductor Blowout
--- Alignment Centerline		□ Brake and Winch
— Watercourse		■ Tower Pad
— Contours (1 m)		

Note:

The projects construction activities and design footprints, which are the basis of the impact assessment, are still as the concept stage. The final configuration of components including conductor size, tower structure type, the height and size of towers will not be confirmed until the detailed design has been completed. This concept design was developed by the ECI JV to inform the project capex / opex estimates for FID. Accordingly, some key engineering optimisations and innovations are still being reviewed (including conductor size, tower type and foundations) which will alter the final placement and height of towers. The optimisation of these design elements will continue and change the final number, size and height of towers, however the quantification of impacts at the SEIS stage of this design is considered suitable to reliably predict expected impacts to conservation significant species and potential habitat. An output from the SEIS impact assessment process has been to develop these Vegetation Clearing Works plans which annotate specific design recommendations on the concept design. These recommendations are consistent with the Field Development Plan provided in Volume 3 Appendix R Field Development Plan.



Average canopy height of 8m within this section of vegetation utilised in the calculation of conductor clearance.

