



 **COPPERSTRING 2.0**

The CopperString 2.0 logo features a stylized, red 'S' shape that resembles a string or wire, positioned to the left of the text 'COPPERSTRING 2.0'.

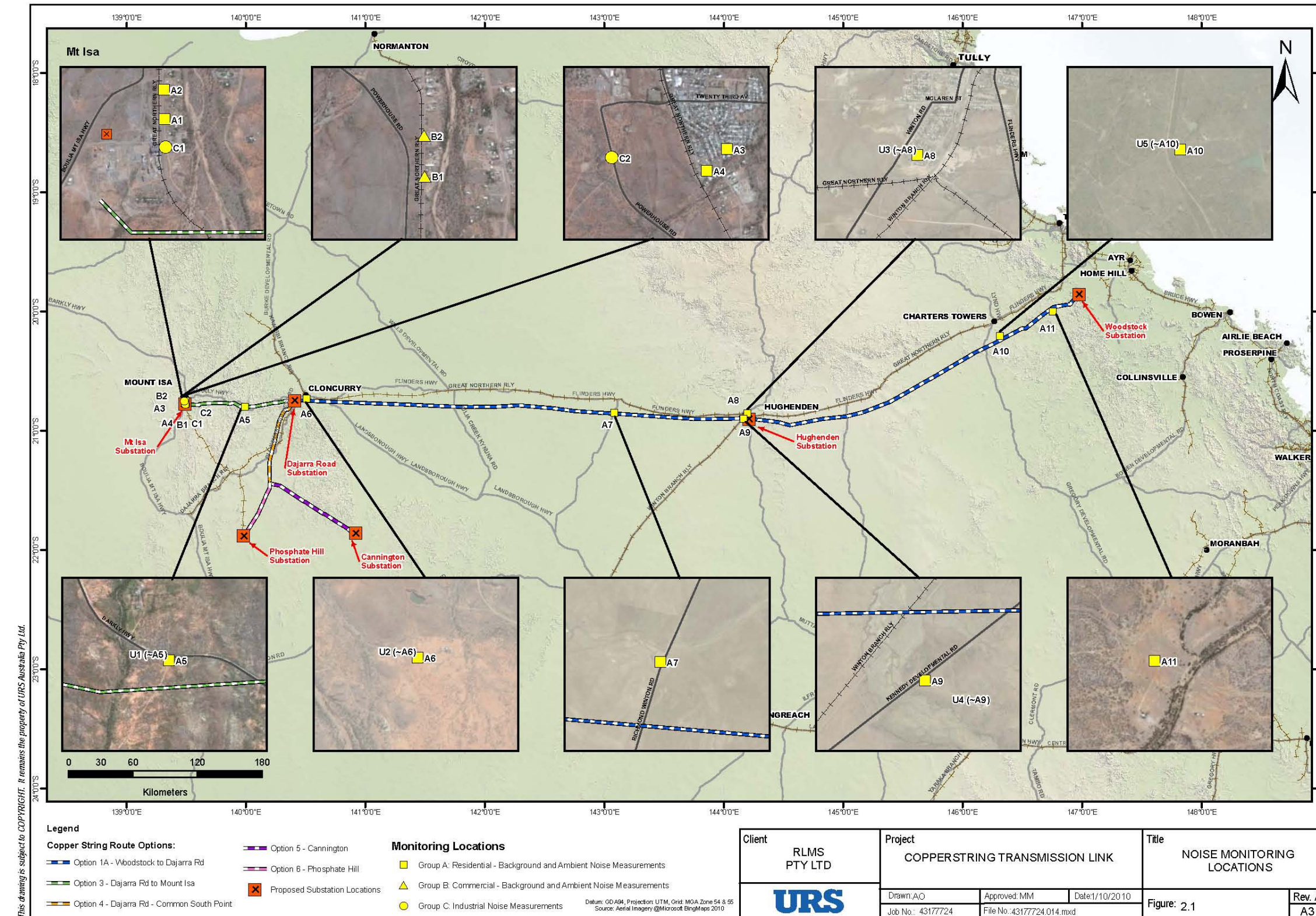
CopperString 2.0

Noise technical report data CopperString 1.0

Volume 3 Appendix W

2 Project Site and Description

Figure 2-1 Copper String Project Location Plan, Indicating Noise Monitoring Locations



This drawing is subject to COPYRIGHT. It remains the property of URS Australia Pty Ltd.

Weild every care is taken by URS to ensure the accuracy of the services or utilities data and site boundaries, URS makes no representation or warranties about its accuracy, reliability, completeness, suitability for any particular purpose and disclaims all responsibility and liability (including without limitation, liability in negligence) for all expenses, losses, damages (including indirect or consequential damage) and the costs which may be incurred as a result of data being inaccurate in any way for any reason.

Appendix A Unattended Monitoring Results

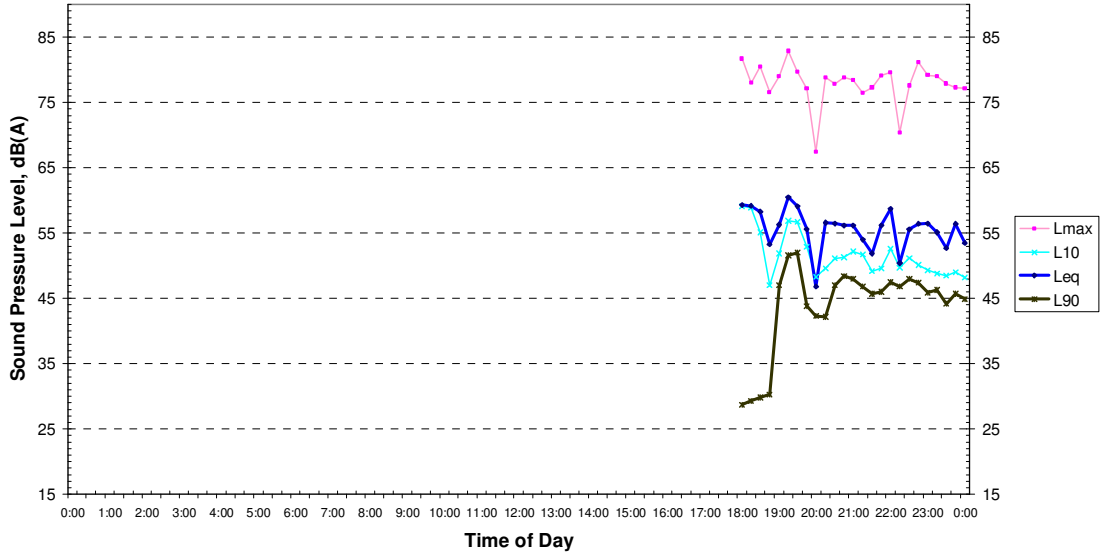
Appendix A

A.1 Barkly Highway

NOISE MONITORING RESULTS: Barkly Highway, QLD												
Date	Assessment Background Level (L90), dB(A)			Ambient Noise Levels (Leq), dB(A)			L1, dB(A)			L10, dB(A)		
	D	E	N	D	E	N	D	E	N	D	E	N
Tuesday 31 Aug 2010	-	30	24	-	57	55	-	70	52	-	54	52
Wednesday 1 Sep 2010	33	-	-	59	-	-	73	-	-	61	-	-
Median Value	33	30	24				73	70	52	61	54	52
Logarithmic Average				59	57	55						
Notes:												
5. Time of the day: Daytime 7am – 6pm Evening 6pm – 10pm Night 10pm – 7am												
6. Results of the first and last monitoring hours may be not from full monitoring periods												
7. Where RBL is found to be less than 25 dB(A), then it is set to 25 dB(A)												
8. Unreliable data affected by meteorological factors or extraneous noise sources were excluded from results												
Policy and Guideline: QLD Environmental Protection (Noise) Policy 2008 – EccoAccess Guidelines												

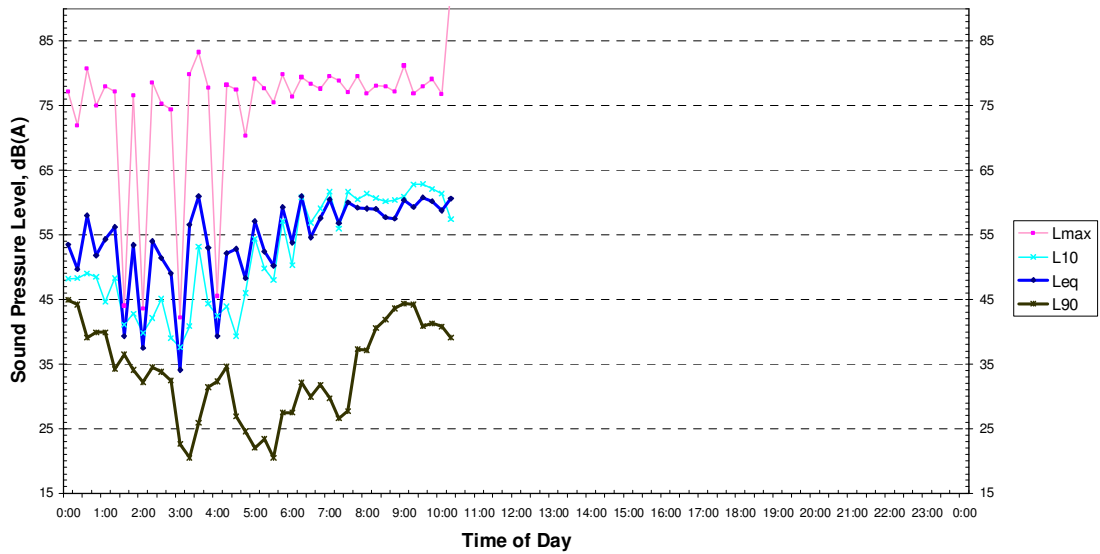
Appendix A

Daily Noise Monitoring Results
Location : Barkly Hwy, Cloncurry, QLD
Tuesday 31 August 2010



Note:
 Shaded periods indicate periods affected by adverse weather conditions or extraneous
 Measured data during these periods were excluded from calculation of noise levels averaged for the period.

Daily Noise Monitoring Results
Location : Barkly Hwy, Cloncurry, QLD
Wednesday 1 September 2010



Note:
 Shaded periods indicate periods affected by adverse weather conditions or extraneous
 Measured data during these periods were excluded from calculation of noise levels averaged for the period.

Appendix A

A.2 Cloncurry

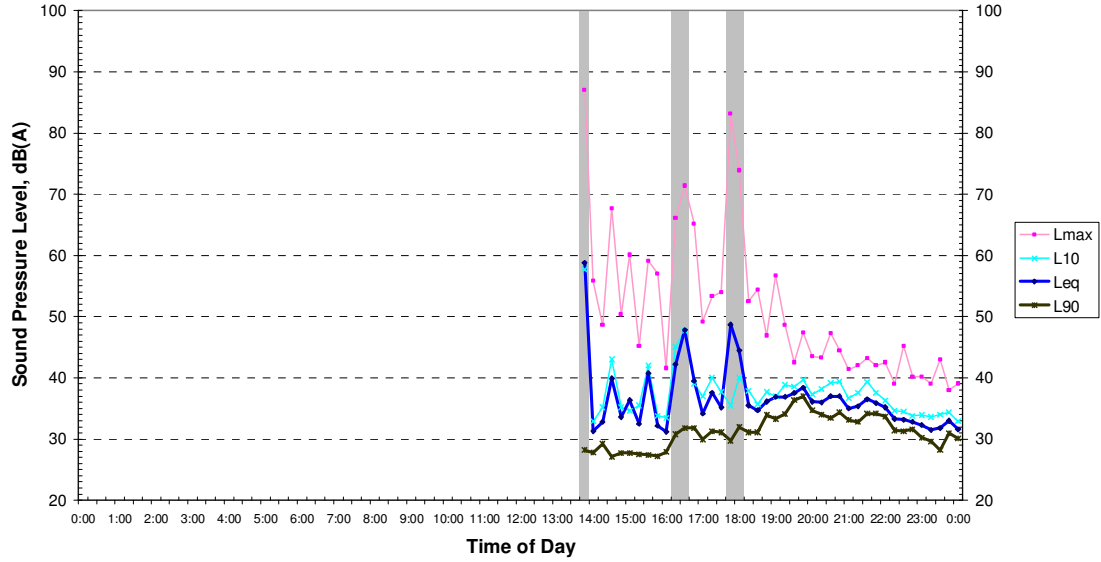
NOISE MONITORING RESULTS: Roxmere Road, Cloncurry, QLD												
Date	Assessment Background Level (L90), dB(A)			Ambient Noise Levels (Leq), dB(A)			L1, dB(A)			L10, dB(A)		
	D	E	N	D	E	N	D	E	N	D	E	N
Tuesday 31 Aug 2010	28	32	29	36	36	38	65	46	40	51	38	40
Wednesday 1 Sep 2010	37	-	-	41	-	-	60	-	-	46	-	-
Median Value	32	32	29				63	46	40	48	38	40
Logarithmic Average				39	36	38				49		
Notes:												
9. Time of the day: Daytime 7am – 6pm Evening 6pm – 10pm Night 10pm – 7am												
10. Results of the first and last monitoring hours may be not from full monitoring periods												
11. Where RBL is found to be less than 25 dB(A), then it is set to 25 dB(A)												
12. Unreliable data affected by meteorological factors or extraneous noise sources were excluded from results												
Policy and Guideline: QLD Environmental Protection (Noise) Policy 2008 – EccoAccess Guidelines												

Appendix A

Daily Noise Monitoring Results

Location : Roxmere Road, Cloncurry, QLD

Tuesday 31 August 2010



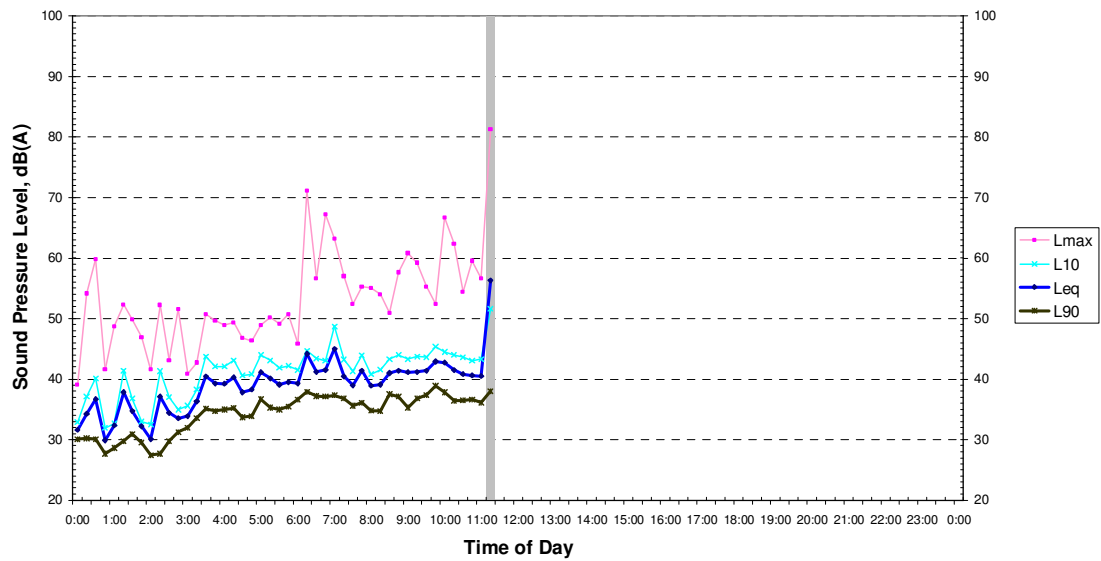
Note:

Shaded periods indicate periods affected by adverse weather conditions or extraneous noise. Measured data during these periods were excluded from calculation of noise levels averaged for the period.

Daily Noise Monitoring Results

Location : Roxmere Road, Cloncurry, QLD

Wednesday 1 September 2010



Note:

Shaded periods indicate periods affected by adverse weather conditions or extraneous noise. Measured data during these periods were excluded from calculation of noise levels averaged for the period.

Appendix A

A.3 Beaconsfield Street, Hughenden

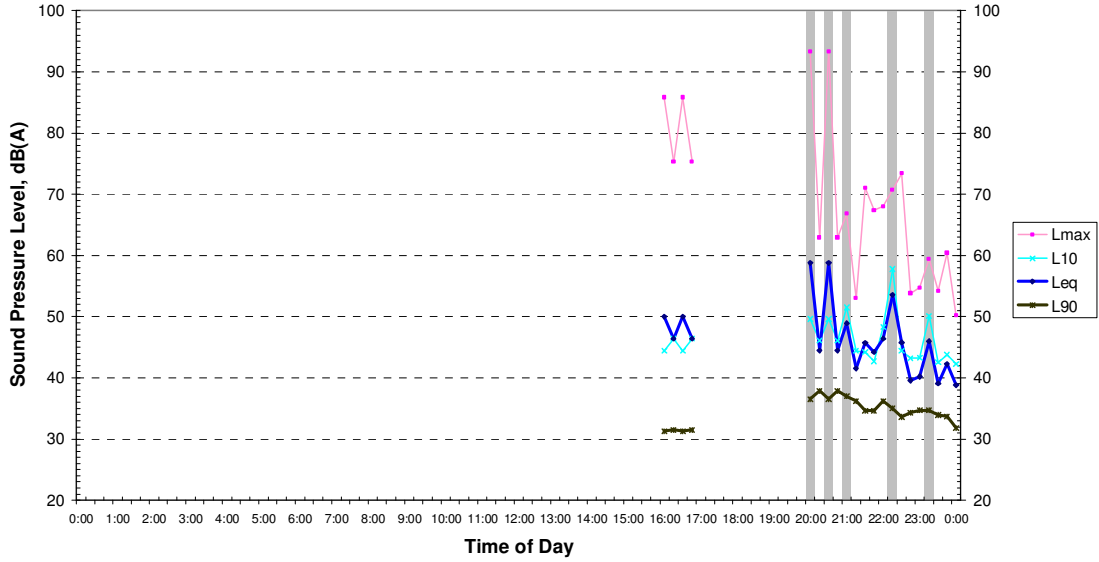
NOISE MONITORING RESULTS: 38 Beaconsfield Street, Hughenden, QLD												
Date	Assessment Background Level (L90), dB(A)			Ambient Noise Levels (Leq), dB(A)			L1, dB(A)			L10, dB(A)		
	D	E	N	D	E	N	D	E	N	D	E	N
Thursday 2 Sept 2010	31	35	32	49	45	43	57	57	48	45	46	48
Median Value	31	35	32				57	57	48	45	46	48
Logarithmic Average				49	45	43						
Notes: 13. Time of the day: Daytime 7am – 6pm Evening 6pm – 10pm Night 10pm – 7am 14. Results of the first and last monitoring hours may be not from full monitoring periods 15. Where RBL is found to be less than 25 dB(A), then it is set to 25 dB(A) 16. Unreliable data affected by meteorological factors or extraneous noise sources were excluded from results												
Policy and Guideline: QLD Environmental Protection (Noise) Policy 2008 – EccoAccess Guidelines												

Appendix A

Daily Noise Monitoring Results

Location : 38 Beaconsfield Street, Hughenden, QLD

Thursday 2 September 2010



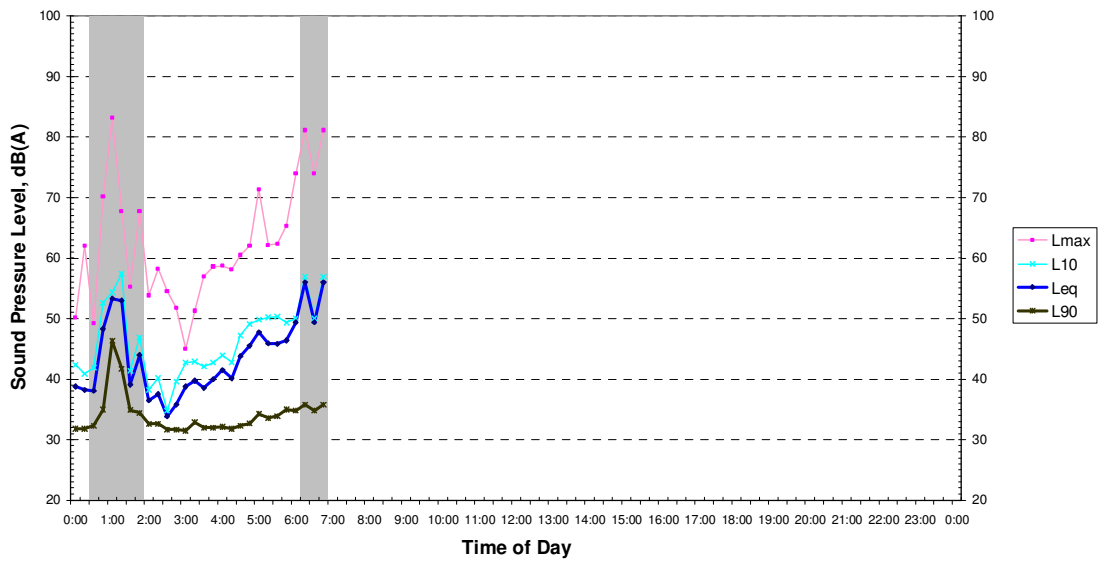
Note:

Shaded periods indicate periods affected by adverse weather conditions or extraneous noise. Measured data during these periods were excluded from calculation of noise levels averaged for the period.

Daily Noise Monitoring Results

Location : 38 Beaconsfield Street, Hughenden, QLD

Friday 3 September 2010



Note:

Shaded periods indicate periods affected by adverse weather conditions or extraneous noise. Measured data during these periods were excluded from calculation of noise levels averaged for the period.

Appendix A

A.4 Kennedy Developmental Road, Hughenden

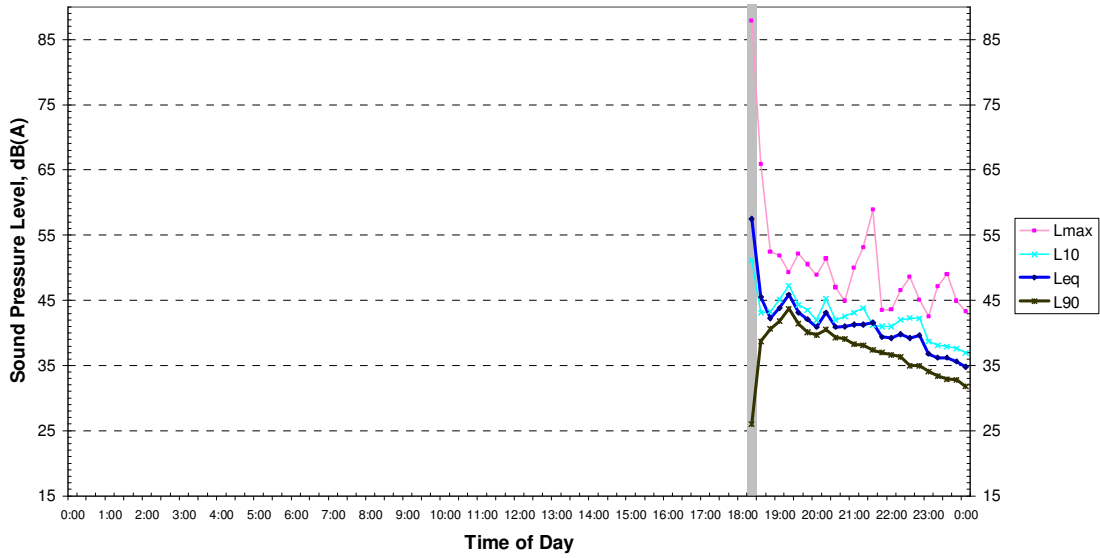
NOISE MONITORING RESULTS: Roxmere Road, Cloncurry, QLD												
Date	Assessment Background Level (L90), dB(A)			Ambient Noise Levels (Leq), dB(A)			L1, dB(A)			L10, dB(A)		
	D	E	N	D	E	N	D	E	N	D	E	N
Wednesday 1 Sep 2010	-	38	26	-	43	37	-	58	40	-	45	40
Thursday 2 Sep 2010	19	43	24	44	48	39	49	51	44	44	50	44
Median Value	19	41	25				49	54	42	44	47	42
Logarithmic Average				44	46	38		56	43		48	43
Notes:												
17. Time of the day: Daytime 7am – 6pm Evening 6pm – 10pm Night 10pm – 7am												
18. Results of the first and last monitoring hours may be not from full monitoring periods												
19. Where RBL is found to be less than 25 dB(A), then it is set to 25 dB(A)												
20. Unreliable data affected by meteorological factors or extraneous noise sources were excluded from results												
Policy and Guideline: QLD Environmental Protection (Noise) Policy 2008 – EccoAccess Guidelines												

Appendix A

Daily Noise Monitoring Results

Location : CS0052 Kennedy Developmental Road, Hughenden, QLD

Wednesday 1 September 2010



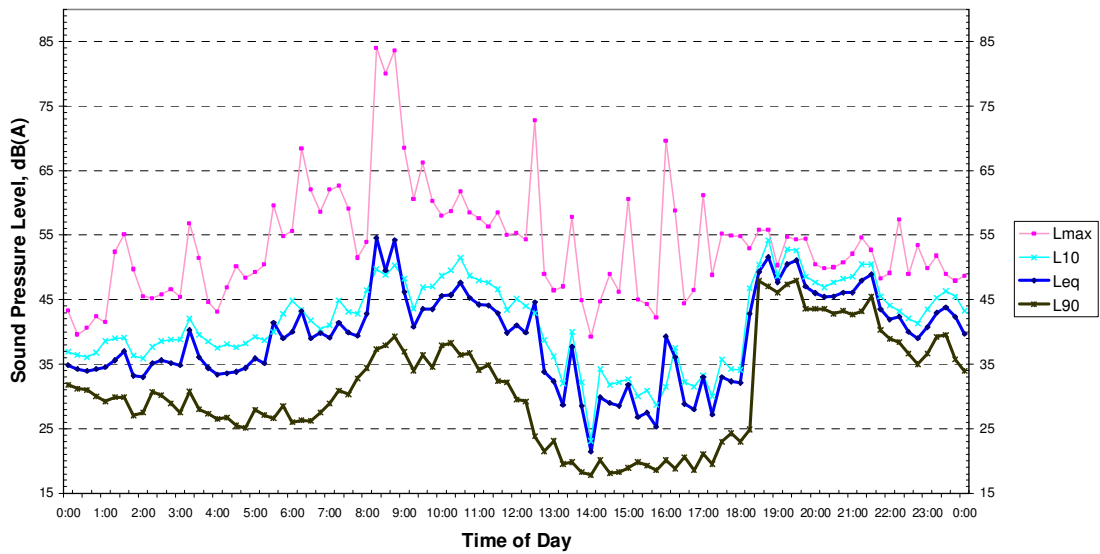
Note:

Shaded periods indicate periods affected by adverse weather conditions or extraneous Measured data during these periods were excluded from calculation of noise levels averaged for the period.

Daily Noise Monitoring Results

Location : CS0052 Kennedy Developmental Road, Hughenden, QLD

Thursday 2 September 2010



Note:

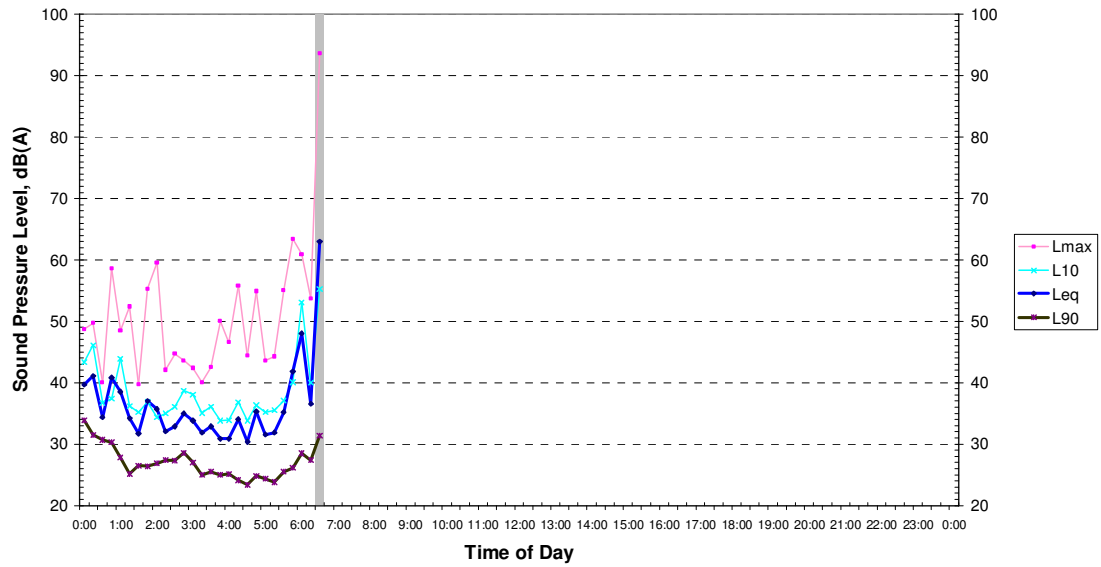
Shaded periods indicate periods affected by adverse weather conditions or extraneous Measured data during these periods were excluded from calculation of noise levels averaged for the period.

Appendix A

Daily Noise Monitoring Results

Location : CS0052 Kennedy Developmental Road, Hughenden, QLD

Friday 3 September 2010



Note:

Shaded periods indicate periods affected by adverse weather conditions or extraneous noise.
Measured data during these periods were excluded from calculation of noise levels averaged for the period.

Appendix A

A.5 Mountain View Road, Charters Towers

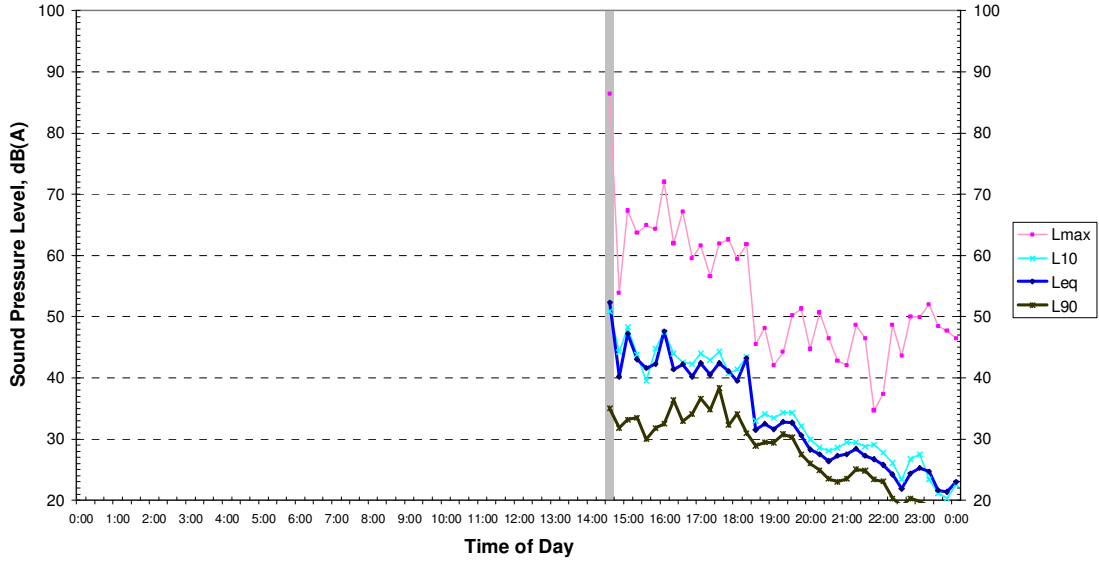
NOISE MONITORING RESULTS: Mountain View Road, Charters Towers, QLD												
Date	Assessment Background Level (L90), dB(A)			Ambient Noise Levels (Leq), dB(A)			L1, dB(A)			L10, dB(A)		
	D	E	N	D	E	N	D	E	N	D	E	N
Friday 3 Sep 2010	34	24	19	43	33	30	56	46	37	46	35	37
Saturday 4 Sep 2010	25	-	-	45	-	-	58	-	-	47	-	-
Median Value	29	24	19				57	46	37	47	35	37
Logarithmic Average				44	33	30						
Notes: 21. Time of the day: Daytime 7am – 6pm Evening 6pm – 10pm Night 10pm – 7am 22. Results of the first and last monitoring hours may be not from full monitoring periods 23. Where RBL is found to be less than 25 dB(A), then it is set to 25 dB(A) 24. Unreliable data affected by meteorological factors or extraneous noise sources were excluded from results												
Policy and Guideline: QLD Environmental Protection (Noise) Policy 2008 – EccoAccess Guidelines												

Appendix A

Daily Noise Monitoring Results

Location : Mountain View Road, Charters Towers, QLD

Friday 3 September 2010



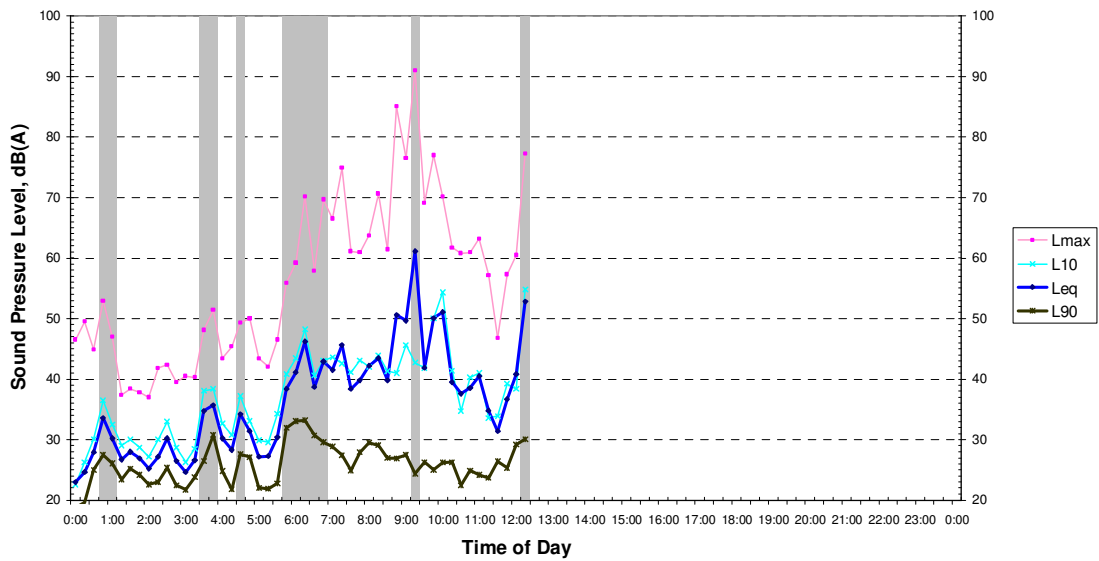
Note:

Shaded periods indicate periods affected by adverse weather conditions or extraneous noise. Measured data during these periods were excluded from calculation of noise levels averaged for the period.

Daily Noise Monitoring Results

Location : Mountain View Road, Charters Towers, QLD

Saturday 4 September 2010



Note:

Shaded periods indicate periods affected by adverse weather conditions or extraneous noise. Measured data during these periods were excluded from calculation of noise levels averaged for the period.

Appendix B Attended Monitoring Results

Type of Measur.	Zone	Location	Background Noise Levels L90, dB(A)			Ambient Noise Levels Leq, dB(A)			L10, dB(A)			L1, dB(A)		
			D	E	N	D	E	N	D	E	N	D	E	N
Residential – Background and Ambient Noise Measurements	Mt Isa	A1: 132-138 Mica Creek Rd, Mica Creek – Mt Isa	56	56	-	60	58	-	58	58	-	68	61	-
		A2: 118-120 Mica Creek Rd, Mica Creek – Mt Isa	45	-	31	49	-	33	50	-	34	57	-	36
		A3: 4 Topaz Street, Happy Valley – Mt Isa	44	45	39	50	49	41	52	50	41	59	55	44
		A4: 7 Southdown Avenue, Happy Valley – Mt Isa	42	38	39	53	45	47	51	48	48	61	52	57
	Barkly Hwy	A5: CS0125 – Barkly Hwy. 60 km east of Mt Isa	28	30	-	34	58	-	35	58	-	40	71	-
	Cloncurry	A6: Roxmere Rd, Cloncurry	29	-	-	35	-	-	37	-	-	43	-	-
	Richmond	A7: CS0074 – Windsor Rd, Richmond	17	-	-	30	-	-	30	-	-	39	-	-
	Hughenden	A8: 38 Beaconsfield St, Hughenden	31	38	34	45	44	45	46	45	42	56	52	52
		A9: CS0052 - Kennedy Developmental Road, Hughenden	18	-	-	25	-	-	29	-	-	35	-	-
	Charters Towers	A10: Mountain View Road, Charters Towers	33	-	-	41	-	-	45	-	-	49	-	-
		A11: CS0009 - Burdekin Falls Dam Road, Charters Towers	27	-	-	36	-	-	38	-	-	47	-	-
Commercial – Background and Ambient Noise Measurements	Mt Isa	B1: 82-84 Mica Creek Road. 1200 m from Mica Creek Power Station	-	35	-	-	38	-	-	40	-	-	44	-
		B2: Mica Creek Road. 1600 m from Mica Creek Power Station	-	37	-	-	40	-	-	47	-	-	54	-
Industrial Noise Measurements	Mt Isa	C1: 50 m away from Mica Creek Power Station	64	-	-	65	-	-	67	-	-	68	-	-
		C2: 100 m away from noise source on Powerhouse Road	61	-	-	63	-	-	65	-	-	66	-	-
Notes:														
<ul style="list-style-type: none"> Monitoring locations are shown in Figure 1. These are actual measured noise levels. Noise levels shown in the report include relevant corrections and assumptions. 														