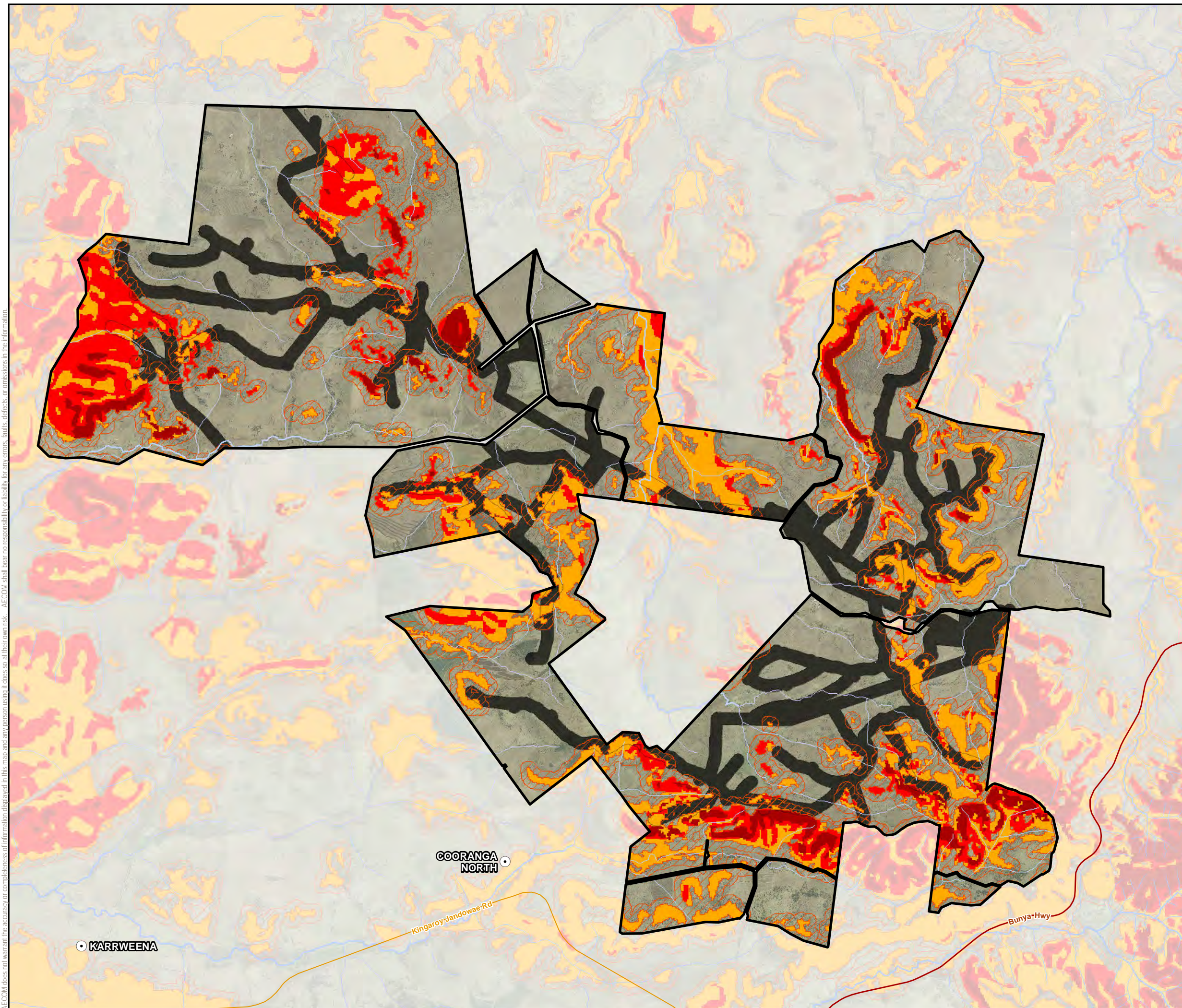





AECOM does not warrant the accuracy or completeness of information displayed in this map and any person using it does so at their own risk. AECOM shall bear no responsibility or liability for any errors, faults, defects, or omissions in the information.







DATUM GDA 1994, PROJECTION MGA ZONE 56

0 1 2
Kilometres

1:60,000 (when printed at A3)

Legend


- Project Site
- Study Area
- Locality
- Highway; Freeway
- Main Road

Vegetation Management Watercourse

- Stream order 1 and 2
- Stream order 3 to 8

Bushfire Prone Areas

- Very High Potential Bushfire Intensity
- High Potential Bushfire Intensity
- Medium Potential Bushfire Intensity
- Potential Impact Buffer



Overview

0 100 200
Kilometres

Mackay
Rockhampton
Gladstone
Bundaberg
Gympie
Brisbane

Map Extents

COOPERS GAP WIND FARM
ENVIRONMENTAL IMPACT STATEMENT

BUSHFIRE

PROJECT #: 60489152
CREATED BY: BM
LAST MODIFIED: BM: 5/09/2016
VERSION: 1

Figure 9.1