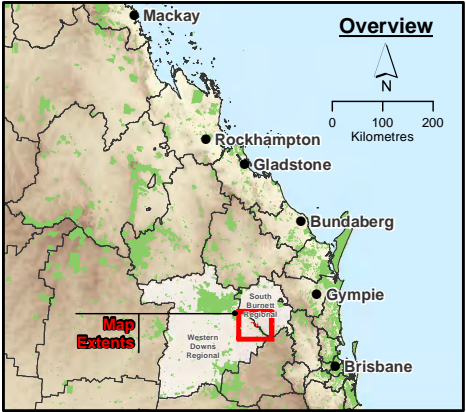


Legend

- Project Site
- Study Area
- LVIA Project Study Area
- Turbine
- Locality
- Watercourse (stream order 3 to 8)
- Highway; Freeway; Main Road
- Landscape Character Type**
 - Type A, Undulating Foothill Plains and Valleys
 - Type B, Rolling Hills and Ridges with Open Forest
 - Type C, Lowland Native Forest
 - Type D, Forested Volcanic Uplands
 - Type E, Settled Red Soil Plains



- Data Sources:*
1. Project Site, Turbine Layout © 2016 AECOM Australia Pty Ltd.
 2. Suralt Basin 40 cm Imagery © SISF 2013
 3. Service Road, Transmission Lines © AGL 2014
 4. Locality, Roads © StreetPro 2011
 5. Cadastral Data (DCDB) © State of Queensland (Department of Natural Resources and Mines) 2016
 6. Contours 10m © Department of Natural Resources and Mines, 2013.
 7. Hillshade, based on the 25m DEM covering the SEQ, DNRM 2005
 8. Local Government Area (LGA) boundaries © Australia Bureau of Statistics (ABS), 2011.
 9. Vegetation Management Watercourse and Drainage feature map (1:100 000 and 1:250 000) - version 1.4 dataset © State of Queensland (Department of Natural Resources and Mines) 2016
 10. Background Image, Captured on 2/10/2011, Bing Maps.
 11. Landscape Character Types, 2011

Disclaimer:
StreetPro © 2011 Pitney Bowes Software Pty Ltd. All rights reserved.
© State of Queensland (Department of Natural Resources and Mines) 2014. Data from Commonwealth of Australia (Geoscience Australia) 2009 used in creating this dataset provided under Creative Commons Australia - Attribution license. Updated data available at <http://dds.information.qld.gov.au/dds/>
© The State of Queensland (Department of Environment and Resource Management) 2011. While every care is taken to ensure the accuracy of the Information Product, the Department of Environment and Resource Management makes no representations or warranties about its accuracy, reliability, completeness or suitability for any particular purpose and disclaims all responsibility and all liability (including without limitation, liability in negligence) for all expenses, losses, damages (including indirect or consequential damage) and costs which you might incur as a result of the product being inaccurate or incomplete in any way and for any reason.

**COOPERS GAP WIND FARM
ENVIRONMENTAL IMPACT STATEMENT**

LANDSCAPE CHARACTER TYPES

| | | |
|----------------|---------------|-----------------------|
| PROJECT #: | 60489152 | Figure 5.3 |
| CREATED BY: | BM | |
| LAST MODIFIED: | BM: 5/09/2016 | |
| VERSION: | 1 | |