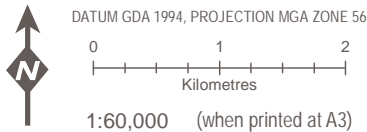
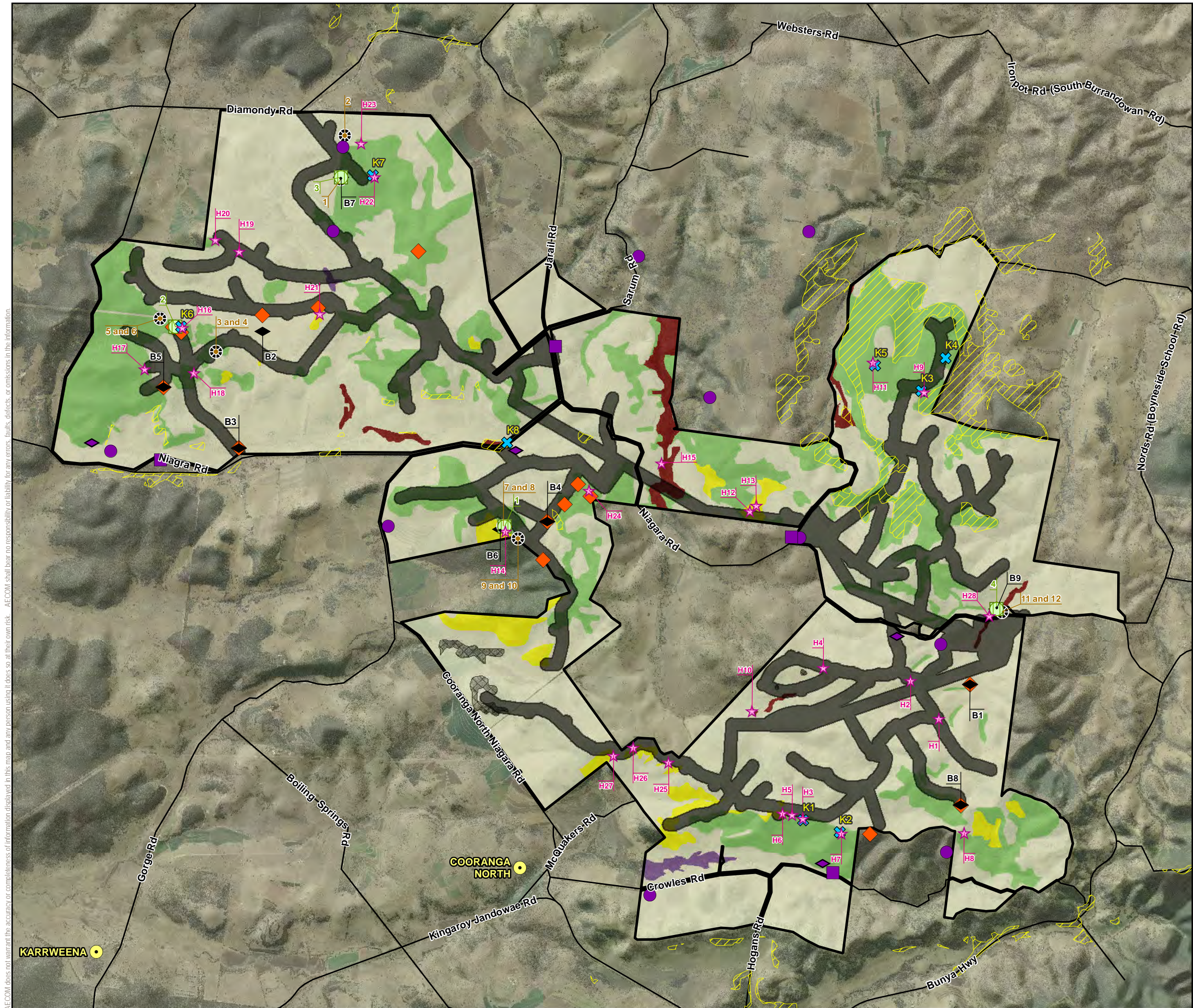


AECOM does not warrant the accuracy or completeness of information displayed in this map and any person using it does so at their own risk. AECOM shall bear no responsibility or liability for any errors, faults, defects, or omissions in the information.



Legend

- Project Site
- Study Area
- Locality
- Road
- Habitat Assessment (2013)
- Detailed Trap Sites (2012)
- Remote Camera / Hair Tube Sites (2012)
- Koala SAT sites (2013)
- Bird utilisation survey (2010)
- Bat detection (2010)
- Bat detection (2008)
- Bird utilisation survey (2008)
- Call playback for nocturnal birds and amphibians (2008)
- Essential Regrowth Habitat (Koala)
- Broad Habitat Types**
 - Eucalypt Woodland or Open Forest
 - Fringing Riparian Woodlands
 - Non-eucalypt Open Forest
 - Vine Thickets
 - Non-remnant (Open Grassland Pasture)
 - Unknown / Unverified Habitat



2009 Sources:
1. Project Site, Turbine Layout © 2016 AECOM Australia Pty Ltd.
2. Sural Basin 40 cm Imagery © SSP, 2013
3. Service Road, Transmission Lines © AGL, 2014
4. Locality Roads © StreetPro 2011
5. Cadastral Data (DCDB) © State of Queensland (Department of Natural Resources and Mines) 2016
6. Contours 10m © Department of Natural Resources and Mines, 2013
7. Hillshade, based on the 25m DEM covering the SEQ, DNRM 2005
8. Local Government Area (LGA) boundaries © Australia Bureau of Statistics (ABS), 2011
9. Vegetation Management Watercourse and Drainage feature map (1:100 000 and 1:250 000) - version 1.4 dataset © State of Queensland (Department of Natural Resources and Mines) 2016
10. Background Image, Captured on 27/04/2011, Bing Maps
11. Drainage Basins © State of Queensland (Department of Natural Resources and Mines) 2016
12. Protected Areas © State of Queensland (Department of National Parks, Sport and Racing) 2016-02-11
13. Regional Ecosystem mapping version 8.0 © The State of Queensland (Department of Natural Resources and Mines) 2015
14. Essential Regrowth Habitat Koala © DNRM, 2013
15. Queensland Statewide Corridor Buffers, Version 1.2 © State of Queensland (Department of Environment and Heritage Protection), 2015
Disclaimer:
StreetPro © 2011 Pitney Bowes Software Pty Ltd. All rights reserved.
© State of Queensland (Department of Natural Resources and Mines) 2014-2016. Data from Commonwealth of Australia (Geoscience Australia) 2009 used in creating this dataset provided under Creative Commons Australia - Attribution license. Updated data available at: <http://data.information.qld.gov.au/data/>
© The State of Queensland (Department of Environment and Resource Management) 2011. While every care is taken to ensure the accuracy of the Information Product, the Department of Environment and Resource Management makes no representations or warranties about its accuracy, reliability, completeness or suitability for any particular purpose and disclaims all responsibility and all liability (including without limitation, liability in negligence) for all expenses, losses, damages (including indirect or consequential damage) and costs which you might incur as a result of the

**COOPERS GAP WIND FARM
ENVIRONMENTAL IMPACT STATEMENT**

**FAUNA HABITAT, SURVEY LOCATIONS
AND BROAD HABITAT TYPES**

PROJECT #:	60489152	Figure 12.5
CREATED BY:	BM	
LAST MODIFIED:	BM: 5/09/2016	
VERSION:	1	