



PROJECT CHINA STONE

Consultation

3

CONTENTS

3	Consultation	3-1
3.1	Introduction	3-1
3.2	Consultation Objectives	3-1
3.3	Consultation Process Overview	3-1
3.3.1	Stakeholder Identification	3-1
3.3.2	Issue Scoping Consultation	3-1
3.3.3	Socio-Economic Impact Assessment Consultation	3-2
3.3.4	Issue Response Consultation	3-2
3.3.5	EIS Feedback Consultation	3-2
3.4	Stakeholder Identification	3-2
3.4.1	Project Stakeholders	3-2
3.4.2	Interested and Affected Persons	3-5
3.5	Issue Scoping and SIA Consultation	3-5
3.5.1	Project China Stone Community Information Sheet 1	3-5
3.5.2	Issue Scoping Meetings	3-5
3.5.3	Socio-Economic Impact Assessment Meetings	3-6
3.5.4	Technical Meetings	3-7
3.6	Issue Response Consultation	3-8
3.6.1	Project China Stone Community Information Sheet 2	3-8
3.6.2	Labour Market Study	3-8
3.6.3	Business Capability Survey	3-8
3.6.4	Project China Stone Community Information Sheet 3	3-8
3.7	Findings of Consultation Program	3-8
3.7.1	Issues Raised by State Government	3-9
3.7.2	Issues Raised by Local Government	3-11
3.7.3	Issues Raised by Other Stakeholders	3-13
3.7.4	Comments and Questions	3-16
3.8	Future Consultation	3-17
3.8.1	EIS Feedback Consultation	3-17
3.8.2	Future Consultation	3-17

Tables

Table 3-1	Project Stakeholders
Table 3-2	Summary of Issues Raised by State Government Agencies
Table 3-3	Summary of Issues Raised by Local Government
Table 3-4	Summary of Issues Raised by Other Stakeholders

Attachments

Attachment 3-1	Community Information Sheet 1
Attachment 3-2	Community Information Sheet 2
Attachment 3-3	Community Information Sheet 3

3 CONSULTATION

3.1 INTRODUCTION

A comprehensive stakeholder consultation program was undertaken by Hansen Bailey as an integral part of the Environmental Impact Statement (EIS) process for Project China Stone (the project). The consultation program included consultation with neighbouring landowners, local, state and Australian Government, industry bodies, community groups and other interested parties. This section describes the EIS stakeholder consultation program, including its objectives, the activities undertaken, the stakeholders consulted, their issues and the way in which these issues have been addressed in the EIS. Socio-economic Impact Assessment (SIA) consultation is also described in this section.

The findings of the consultation process informed the SIA and in particular the identification of social impacts (discussed further in Section 18 – Socio-Economic Impact Assessment).

3.2 CONSULTATION OBJECTIVES

The aim of EIS consultation was to identify stakeholders' issues in relation to the project and ensure that these issues were addressed as part of the EIS process. The consultation process was therefore designed as an issues-driven program, with the following objectives:

- Identify project stakeholders;
- Inform stakeholders of the project;
- Identify and understand all stakeholder issues in relation to the project; and
- Develop and implement response strategies to address stakeholder issues.

The EIS consultation program was undertaken in four phases, which are detailed below. A fifth phase of consultation will occur during the public exhibition of the project EIS.

3.3 CONSULTATION PROCESS OVERVIEW

The following section provides an overview of the five main phases of the consultation process. Each phase is then discussed in detail in Sections 3.4 to 3.8. The consultation process considered, where relevant, social and cultural factors, customs and values and linkages between environmental, economic and social impacts issues.

3.3.1 Stakeholder Identification

The objective of the first phase of consultation was to identify all relevant stakeholders in order to ensure their early involvement in the process.

3.3.2 Issue Scoping Consultation

This phase occurred during the exhibition of the draft Terms of Reference (TOR) and involved consultation with project stakeholders for the purposes of identifying project issues.

The objective of the second phase of consultation was to:

- Provide introductory information on the project to stakeholders and to explain the associated EIS and consultation processes;
- Initiate and maintain open communication with stakeholders; and
- Identify stakeholder issues and concerns in relation to the project.

3.3.3 Socio-Economic Impact Assessment Consultation

SIA consultation was conducted in parallel with issue scoping consultation and involved similar stakeholders. The objectives of this third phase of consultation were to:

- Understand the baseline profile of the Charters Towers and Clermont communities and the broader Charters Towers and Isaac Local Government Areas (LGAs);
- Validate and elaborate statistical data;
- Identify emerging issues in the community;
- Assess the likely social impacts of the project;
- Guide effective and appropriate decision making on how to manage social impacts; and
- Provide an opportunity for the broader community to have inputs into the assessment process.

3.3.4 Issue Response Consultation

Issue response consultation was undertaken following the release of the final TOR for the project. The objectives of the fourth phase of consultation were to:

- Proactively respond to all relevant issues raised; and
- Work with stakeholders to develop appropriate solutions and strategies to manage impacts associated with the project.

3.3.5 EIS Feedback Consultation

EIS feedback consultation occurs in parallel to the public exhibition of the project EIS. The objective of this phase of consultation is to assist stakeholders in understanding the results of specialist studies.

3.4 STAKEHOLDER IDENTIFICATION

3.4.1 Project Stakeholders

A comprehensive list of stakeholders for the project EIS was developed through:

- Background research on the local and regional area;
- Networking with different individuals and organisations; and
- The results of consultation conducted for the project.

The stakeholders were identified and grouped as indicated in Table 3-1.

Table 3-1 Project Stakeholders

KEY STAKEHOLDER GROUPS	KEY STAKEHOLDERS
Landowners within and adjacent to the project site	Brian Allan Corbett & Lorraine Ellen Corbett
	Coovin Pastoral Company Pty Ltd (as Trustee)
	Adani Mining Pty Ltd (Adani)
Landowners adjacent and in proximity to the project site	Pathmont Pty Ltd
	Kevin Herrod
Petroleum and coal tenement holders	Waratah Coal Pty Ltd
	Spinifex Rural Management Pty Ltd
	Adani
	Comet Ridge Ltd
	Queensland Energy Resources Ltd
	Vale Coal Exploration Pty Ltd
	Matilda Coal Pty Ltd
Federal Government	Department of the Environment (DotE)
State Government*	Office of the Coordinator-General
	Department of Environment and Heritage Protection (EHP) – Brisbane, Emerald and Mackay
	Department of National Parks, Recreation, Sport and Racing
	Department of Aboriginal and Torres Strait Islander and Multicultural Affairs (DATSIMA)
	Department of Natural Resources and Mines (DNRM)
	Department of State Development, Infrastructure and Planning (DSDIP)
	Queensland Treasury and Trade
	Department of Education, Training and Employment (DETE)
	Department of Agriculture and Fisheries
	Queensland Fire and Rescue Service (QFRS)
	Queensland Ambulance Service (QAS)
	Department of Community Safety
	Department of Communities, Child Safety and Disability Services (DCCSDS)
	Department of Housing and Public Works (DHPW)
	Queensland Police Service (QPS) – Mackay, Charters Towers, Clermont
	Queensland Health (QH) – Townsville
	Department of Transport and Main Roads (TMR)
	Aurizon Network

KEY STAKEHOLDER GROUPS	KEY STAKEHOLDERS
Local Government	Charters Towers Regional Council (CTRC)
	Isaac Regional Council (IRC)
	Townsville City Council (TCC)
Community and Environmental Groups	NQ Dry Tropics
	Capricorn Conservation Council
Industry Groups	Regional Development Australia Mackay Whitsunday
	Regional Development Australia Townsville and North West Queensland
	Mackay Whitsunday Regional Economic Development Corporation
	Mackay/Whitsunday Road Accident Action Group
	Charters Towers Chamber of Commerce and Mines
	Clermont Community and Business Group
Facility and Service Providers	Charters Towers Rotary Club
	Myuma Group
	Jenagar Training
	Tec-NQ
	Barrier Reef Institute of TAFE
	Dalrymple Trade Training Centre
	Charters Towers Lions Club
	Charters Towers schools
	Jupiter Mossman Community Co-Operative
	Charters Towers Community Mental Health Service
	Charters Towers Neighbourhood Centre
	Charters Towers Hospital and Health Service
	Dalrymple Rural Family Support Service
	Clermont Community Housing and Other Services
	Local religious organisations
Local Communities	Residents of Charters Towers and Clermont
	Small businesses in Charters Towers and Clermont
Endorsed Aboriginal Parties	Wangan and Jangalingou People QC04/6

**Since the initial consultation was undertaken for the project, various Queensland Government departments have undergone machinery of government changes. The government departments listed in this table therefore reflect those organisations that were in existence at the time of consultation.*

Details on consultation and key activities undertaken with each stakeholder group are described in the following sections.

3.4.2 Interested and Affected Persons

The interested and affected persons for the project were notified of the availability of the draft TOR. Affected persons consist of:

- Landowners within the project site;
- Landowners within and adjoining the project site;
- Tenement holders within the project site;
- Easement holders within the project site;
- State and local government authorities; and
- Native title claimants.

The interested and affected persons for the project were contacted as part of the project EIS consultation program and will be provided with notification of the availability of the EIS.

3.5 ISSUE SCOPING AND SIA CONSULTATION

Initial issue scoping and SIA consultation commenced in November 2012 and involved one-on-one, face-to-face interviews and/or telephone interviews with stakeholders over three months.

The purpose of these interviews was to provide stakeholders with background information about the project and the EIS process, and to identify any issues and concerns associated with the project. Consultation for the SIA was undertaken to validate the baseline profile of the study area, and assist in the identification and assessment of socio-economic impacts.

The key activities and communication tools used during the issue scoping and SIA phases of consultation are discussed in the following sections.

3.5.1 Project China Stone Community Information Sheet 1

A project community information sheet (CIS1) was developed in November 2012 and was provided to stakeholders during the first round of consultation either at issue scoping meetings or via post or email. CIS1 provided a brief introduction to the proponent, an overview of the project and the associated approval process, as well as the EIS and community consultation process (Attachment 3-1).

3.5.2 Issue Scoping Meetings

Issue scoping meetings were held in Brisbane, Townsville, Charters Towers, Clermont and Mackay. A total of 20 issue scoping meetings were conducted as either one-on-one meetings, group meetings, presentations or telephone calls with representatives of local and state government agencies and other interested parties.

The purpose of the issue scoping meetings was to provide an overview of the project and the associated approvals process as well as the EIS and community consultation process. Stakeholders were also provided with an opportunity to identify and discuss any issues of special interest. Government and non-government agencies responsible for provision of social infrastructure and services at a local and regional level were offered an opportunity to discuss the scope of service provision and existing challenges.

A copy of CIS1 was provided at the meetings or posted or emailed prior to telephone interviews.

State Government Stakeholders

Issue scoping consultation was conducted with relevant state government agencies, including:

- DATSIMA;
- DCCSDS;
- DHPW;
- DSDIP;
- QH;
- QPS;
- QAS; and
- QFRS.

In addition to these stakeholders, meetings were also held with other organisations including Skills Queensland (DETE) and NQ Dry Tropics.

Local Government Stakeholders

Issue scoping meetings were conducted with representatives from the following local government authorities:

- CTRC;
- IRC; and
- TCC.

A tailored presentation of the project was provided to the CTRC and IRC in separate full council meetings prior to the commencement of EIS issue scoping consultation.

Other Stakeholders

Issue scoping meetings were held with a number of other stakeholders, including:

- Landholders within and surrounding the project site;
- Regional environmental and industry groups; and
- Regional economic organisations.

3.5.3 Socio-Economic Impact Assessment Meetings

SIA meetings were held in Brisbane, Townsville, Charters Towers, Clermont and Mackay. A total of 27 SIA meetings were conducted as either one-on-one meetings, group meetings, presentations or telephone calls with representatives of local and state government agencies, industry groups, facility and service providers, community groups, landowners within or adjoining the project site and other interested parties.

The purpose of the SIA meetings was to validate and elaborate the socio-economic baseline of the local and regional study area for the SIA and inform the identification and assessment of potential project socio-economic impacts. SIA interviews explored a number of themes including:

- Positive aspects of life in Charters Towers and Clermont;
- Challenges to living in Charters Towers and Clermont;
- Social networking opportunities;
- Regional development and business capability; and
- Community values and aspirations.

Participants in SIA interviews were identified through existing Hansen Bailey contacts within the community and through snowballing techniques.

Local Government

Individual and small group meetings were held with selected representatives of the IRC, CTRC and TCC to gain a focused understanding of local social and economic interests. CTRC representatives who participated in individual SIA meetings included:

- Economic Development Officer;
- Community Development Officer; and
- Town Planner.

Selected Clermont-based representatives of the IRC were also interviewed, including:

- Project Officer;
- Social Planner; and
- Councillor for Clermont.

TCC representatives who participated in issue scoping meetings included:

- Executive Manager of Economic Development and Strategic Projects; and
- Senior Strategic Planning Officer.

Other Stakeholders

A total of 19 group and individual SIA interviews were conducted with the following stakeholders in Townsville, Charters Towers and Clermont:

- Education providers;
- Service providers;
- Community groups;
- Local community members; and
- Industry groups.

In addition to these meetings, a presentation was conducted with the Charters Towers Chamber of Commerce and Mines, which was attended by approximately 50 Charters Towers business representatives and community members.

A standard interview guide was used for each interview. The findings of the interviews informed the SIA and in particular the identification of project impacts.

The key issues identified during the issue scoping and SIA consultation phases are detailed in Section 3.7. Detailed analysis of key social issues is provided in Section 18 – Socio-Economic Impact Assessment and the *Socio-Economic Impact Assessment Report* (Appendix N).

3.5.4 Technical Meetings

Technical consultation with State Government departments was conducted throughout the preparation of the project EIS, to inform the design of the project and development of EIS technical studies. The primary State Government departments consulted on technical and design matters included:

- Office of the Coordinator-General;

- DNRM;
- EHP;
- DSDIP;
- Department of Science, Information Technology, Innovation and the Arts (DSITIA); and
- DHPW.

3.6 ISSUE RESPONSE CONSULTATION

3.6.1 Project China Stone Community Information Sheet 2

A second community information sheet (CIS2) (Attachment 3-2) was prepared and distributed in June 2013 to all project EIS stakeholders. CIS2 provided stakeholders with a summary of the key issues identified during the issue scoping and SIA consultation process, provided proponent responses to these issues and answered a number of frequently asked questions. CIS2 was distributed to all stakeholders via email and mail. Copies were also made available at key locations in Charters Towers and Clermont.

3.6.2 Labour Market Study

In response to consultation with state government representatives, a labour market study was undertaken to inform the project labour sourcing assumptions. This study involved consultation with regional Fly-In Fly-Out (FIFO) Coordinators in Queensland, and additional consultation with representatives of training organisations. The findings of the Labour Market Study are provided in the *Socio-Economic Impact Assessment Report* (Appendix N).

3.6.3 Business Capability Survey

Issue scoping and SIA consultation revealed a desire from stakeholders in Clermont and Charters Towers to capitalise on procurement and supply chain opportunities presented by the project. In response to this, a business capability survey was undertaken in Charters Towers and Clermont to identify potential barriers to the realisation of local procurement benefits for these townships and develop measures to address these barriers. The survey was distributed and conducted via a variety of methods including advertisement in CIS2, face-to-face consultation, targeted phone calls, email and post. A total of 85 businesses participated in the survey, the results of which are provided in the *Socio-Economic Impact Assessment Report* (Appendix N).

A copy of CIS2 was provided with the survey, and the survey itself allowed opportunity for stakeholders to provide qualitative as well as quantitative feedback on local business conditions, and as such the qualitative responses provided through the business survey have been included in the SIA consultation findings.

3.6.4 Project China Stone Community Information Sheet 3

A third community information sheet (CIS3) (Attachment 3-3) was issued to key project EIS stakeholders in September 2014. The purpose of this information sheet was to provide an update on the preparation of the EIS and inform stakeholders of the next steps in the approvals process. CIS3 was distributed to key stakeholders via email and mail. Copies were also made available at key locations in Charters Towers and Clermont.

3.7 FINDINGS OF CONSULTATION PROGRAM

Including the business capability survey participants, over 180 stakeholders were consulted during issue scoping and issue response consultation for the project.

Many concerns commonly expressed by stakeholders in regards to mining projects relate to the impacts of the proximity of mining to a township, the environmental effects of the mine on populated areas and the integration of the workforce into the local community. Due to the remoteness of the project site and the proposed workforce arrangements (FIFO), local community stakeholders raised few concerns regarding the direct environmental, economic and social impacts on the communities of Charters Towers and Clermont. Participants in EIS consultation primarily expressed an interest in technical and logistical aspects of the project and provided a large volume of descriptive information about local communities and services. The issues raised by the project stakeholders are presented in the following sections.

3.7.1 Issues Raised by State Government

Table 3-2 lists the key issues raised by State Government agencies during issue scoping and SIA consultation.

Table 3-2 Summary of Issues Raised by State Government Agencies

STAKEHOLDER	ISSUES RAISED	EIS SECTION REFERENCE
QH	Concern about whether health infrastructure on the project site will have capacity for cumulative workforces in the Galilee Basin	<i>Socio-Economic Impact Assessment</i> (Appendix N) Subsections 6.4.1 and 7.5.1
	Desire to see tele-health options for the project explored	<i>Socio-Economic Impact Assessment</i> (Appendix N) Subsections 6.4.1 and 7.5.1
	Desire to see a weekly fly-in clinic for the project run by the Royal Flying Doctor Service	<i>Socio-Economic Impact Assessment</i> (Appendix N) Subsections 6.4.1 and 7.5.1
	Interest in health infrastructure on site	<i>Socio-Economic Impact Assessment</i> (Appendix N) Subsections 6.4.1 and 7.5.1
	Need to have health infrastructure for 5,000 people on site to accommodate demand	<i>Socio-Economic Impact Assessment</i> (Appendix N) Subsections 6.4.1 and 7.5.1
QPS	Desire for emergency services to be kept informed of the project's progress, especially workforce numbers and vehicle movements	<i>Socio-Economic Impact Assessment</i> (Appendix N) Subsections 7.5.1 and 7.6
	Desire for permanent emergency services facilities on site	<i>Socio-Economic Impact Assessment</i> (Appendix N) Subsections 7.5.1 and 7.6
	Need for comprehensive emergency response system due to remote location, developed in consultation with emergency services	<i>Socio-Economic Impact Assessment</i> (Appendix N) Subsections 7.5.1 and 7.6
	Concerns about difficulties servicing a remote site due to staff attraction and site access	<i>Socio-Economic Impact Assessment</i> (Appendix N) Subsections 7.5.1 and 7.6
	Concerns in relation to the ability of the proponent to successfully manage a large, short-term, isolated construction workforce	<i>Socio-Economic Impact Assessment</i> (Appendix N) Subsections 4.3, 7.3.2 and 7.3.3

STAKEHOLDER	ISSUES RAISED	EIS SECTION REFERENCE
	Concerns over ability of current police vehicles to handle road conditions – may need a four wheel drive vehicle to get to site	<i>Socio-Economic Impact Assessment</i> (Appendix N) Subsection 5.2.2
	Concerns about workforce management, particularly: ■ Fatigue; and ■ Drug and alcohol use.	<i>Socio-Economic Impact Assessment</i> (Appendix N) Subsections 7.3.2 and 7.3.3
	Need for significant communications and internet infrastructure to adequately service the area – concern about numerous communications black spots	<i>Socio-Economic Impact Assessment</i> (Appendix N) Subsections 7.5.1 and 7.6
	Concerns about different codes of conduct applying to contractors and employees	<i>Socio-Economic Impact Assessment</i> (Appendix N) Subsections 7.3.2 and 7.3.3
	Concerns about the physical condition of local road networks and impacts of project vehicle movements	<i>Road Impact Assessment</i> (Appendix O)
	Concerns about the capacity of local road networks to accommodate additional project-related traffic volumes	Section 19 – Traffic and Transport, Subsection 19.2
	Concerns that the project site will be inaccessible during flood events	Section 13 – Surface Water
	Desire to see proponent cooperation with Adani to plan and carry out infrastructure upgrades	Section 4 – Project Description, and <i>Road Impact Assessment</i> (Appendix O)
QFRS	Concern about communications black spots along Gregory Developmental Road and potential delays in emergency response	<i>Socio-Economic Impact Assessment</i> (Appendix N) Subsection 6.6.2
	Desire to use the project's communications systems to enhance availability of communications signal along Gregory Developmental Road	<i>Socio-Economic Impact Assessment</i> (Appendix N) Subsections 7.5.1 and 7.6
	Concern about limited QFRS facilities and staff in Charters Towers and Clermont and impacts on service delivery	<i>Socio-Economic Impact Assessment</i> (Appendix N) Subsections 5.2.1 and 5.2.2
	Concern about response timeframes to remote sites	<i>Socio-Economic Impact Assessment</i> (Appendix N) Subsections 7.5.1 and 7.6
	Concern about loss of local fire brigade if landholders move from properties on and surrounding the project site	<i>Socio-Economic Impact Assessment</i> (Appendix N) Subsections 7.5.1 and 7.6
QAS	Need for ongoing consultation with emergency services over life of mine	<i>Socio-Economic Impact Assessment</i> (Appendix N) Subsection 7.6.1

STAKEHOLDER	ISSUES RAISED	EIS SECTION REFERENCE
DATSIMA	Desire to see workforce recruited from areas with high unemployment	<i>Socio-Economic Impact Assessment</i> (Appendix N) Subsection 4.4.1
	Desire for Indigenous agencies and organisations to be involved in training strategy development, especially in relation to Indigenous employment	<i>Socio-Economic Impact Assessment</i> (Appendix N) Subsection 7.2.4
	Desire to see benefits of the project spread to broader Indigenous community through employment, rather than just to the Traditional Owners through agreements	<i>Socio-Economic Impact Assessment</i> (Appendix N) Subsection 7.2.2
	Desire to see Indigenous procurement rather than Indigenous employment, as it allows Indigenous persons to remain close to their support networks	<i>Socio-Economic Impact Assessment</i> (Appendix N) Subsection 7.2.2
DETE	Desire to see more Indigenous employment on mining projects	<i>Socio-Economic Impact Assessment</i> (Appendix N) Subsection 7.2.2
	Desire to see more interaction and collaboration between training centres and mine proponents	<i>Socio-Economic Impact Assessment</i> (Appendix N) Subsections 7.2.2 and 7.2.4
	Expectation that skills and training will be a key strategy for sourcing the project workforce	<i>Socio-Economic Impact Assessment</i> (Appendix N) Subsection 7.2.4
DSDIP	Desire to see benefits for vulnerable groups through indirect employment opportunities	<i>Socio-Economic Impact Assessment</i> (Appendix N) Subsection 6.3.6
DNRM	Concerns about the environmental impacts of burning coal rejects at the project power station	Section 15 – Air Quality Subsection 15.8

3.7.2 Issues Raised by Local Government

Table 3-3 lists the key issues raised by local government representatives during issue scoping and SIA consultation.

Table 3-3 Summary of Issues Raised by Local Government

STAKEHOLDER	ISSUES RAISED	EIS SECTION REFERENCE
IRC	Desire to see Clermont developed as a labour force source for the project.	<i>Socio-Economic Impact Assessment</i> (Appendix N) Subsection 4.4.1
	Desire to see procurement opportunities in Clermont	<i>Socio-Economic Impact Assessment</i> (Appendix N) Subsections 6.5.6 and 7.4.2

STAKEHOLDER	ISSUES RAISED	EIS SECTION REFERENCE
	Concerns that the rail system is being monopolised for coal transport at the expense of the agriculture industry	<i>Socio-Economic Impact Assessment</i> (Appendix N) Subsection 5.3.2
	Concern about condition of roads, including the Bowen Development Road	<i>Socio-Economic Impact Assessment</i> (Appendix N) Subsections 6.6.1, 6.6.2, 6.6.3, 6.6.4 and 7.5.2
	Concerns that high demand for short term accommodation is reducing space for tourists	<i>Socio-Economic Impact Assessment</i> (Appendix N) Subsection 5.2.2
	Concerns that health services are experiencing difficulties recruiting staff	<i>Socio-Economic Impact Assessment</i> (Appendix N) Subsection 5.2.2
CTRC	Concerns about declining population in Charters Towers	<i>Socio-Economic Impact Assessment</i> (Appendix N) Subsection 5.2.1
	Desire to increase economic diversity	<i>Socio-Economic Impact Assessment</i> (Appendix N) Subsection 5.2.1
	Desire to develop airport further at Charters Towers	<i>Socio-Economic Impact Assessment</i> (Appendix N) Subsection 5.2.1
	Desire to increase Indigenous employment in Charters Towers	<i>Socio-Economic Impact Assessment</i> (Appendix N) Subsections 5.2.1, 6.3.2 and 7.2.2
	Concern about flooding impacts on roads and supply chains	<i>Socio-Economic Impact Assessment</i> (Appendix N) Subsection 5.2.1
	Concern about impacts from other mines on Great Artesian Basin	Section 12 - Groundwater Subsections 12.4.3 and 12.4.10
	Concern that public service downsizing has led to a loss of high income earners in Charters Towers	<i>Socio-Economic Impact Assessment</i> (Appendix N) Subsection 5.2.1
	Difficulties attracting developers to develop land in Charters Towers	<i>Socio-Economic Impact Assessment</i> (Appendix N) Subsection 5.2.1
TCC	Concern about limited communications and internet connectivity in Charters Towers	<i>Socio-Economic Impact Assessment</i> (Appendix N) Subsections 5.2.1 and 6.5.5
	Desire to see project workforce recruited from and reside in Townsville	<i>Socio-Economic Impact Assessment</i> (Appendix N) Subsection 4.4.1 and Appendix C

STAKEHOLDER	ISSUES RAISED	EIS SECTION REFERENCE
	Housing market is stable and residential planning is underway	<i>Socio-Economic Impact Assessment</i> (Appendix N) Subsection 5.3.1

3.7.3 Issues Raised by Other Stakeholders

Issues raised by other stakeholders are outlined in Table 3-4.

Table 3-4 Summary of Issues Raised by Other Stakeholders

ISSUE	STAKEHOLDER TYPE	EIS SECTION REFERENCE
Infrastructure and Services		
Desire to see tele-health options for the project explored	Service provider	<i>Socio-Economic Impact Assessment</i> (Appendix N) Subsection 7.3.1
Desire to see proponents provide greater support for FIFO workers in relation to: <ul style="list-style-type: none"> ■ Physical health; ■ Mental health; and ■ Family relationships. 	Service provider, community member	<i>Socio-Economic Impact Assessment</i> (Appendix N) Subsection 7.3.1 and 7.5.1
Workforce		
Concerns about fatigue management of the workforce and road safety	Industry group	<i>Socio-Economic Impact Assessment</i> (Appendix N) Subsection 7.3.2
Concerns that FIFO employment arrangements interfere with familial commitments of Indigenous persons	Service provider	<i>Socio-Economic Impact Assessment</i> (Appendix N) Subsection 7.2.2
Concerns codes of conduct and applicability to contractors, especially during construction phase	Industry group	<i>Socio-Economic Impact Assessment</i> (Appendix N) Subsection 7.3.2
Labour and Training		
Concerns about difficulties sourcing required labour for the project, given skill shortages during the previous mining boom	Community member/small business owner, landholder, local service provider	<i>Socio-Economic Impact Assessment</i> (Appendix N) Subsection 7.2.1 and 7.2.1
Desire to see project-related administrative and financial employees based in Townsville	Industry group	<i>Socio-Economic Impact Assessment</i> (Appendix N) Subsection 4.4.2
Desire to see training opportunities related to the project made available in Clermont	Community member, service provider	<i>Socio-Economic Impact Assessment</i> (Appendix N) Subsection 7.2.4

ISSUE	STAKEHOLDER TYPE	EIS SECTION REFERENCE
<p>Desire to see workforce recruited from coastal areas with high unemployment such as:</p> <ul style="list-style-type: none"> ■ Wide Bay Burnett; ■ Cairns; and ■ Sunshine Coast. 	Industry group	<i>Socio-Economic Impact Assessment</i> (Appendix N) Subsection 6.3.6
Environment		
Concerns about impact of the power station's water requirements on water supplies for the region	Community member/small business owner	Section 13 – Surface Water Subsection 13.5.2
Concerns in relation to the proponent's ability to secure a reliable water source for the project	Service provider, community members	Section 13 – Surface Water Subsection 13.5.1
Concerns about project dust volumes and impacts on residential amenity of property	Landholder	Section 15 – Air Quality Subsection 15.8.4
Concerns about proponent commitments to rehabilitation being fulfilled	Community member	Section 8 – Rehabilitation
Concerns about water contamination from the project, especially contamination of local creeks	Landholder	Section 13 – Surface Water Subsection 13.6
Concerns about the potential groundwater draw from the project	Environment group	Section 12 - Groundwater Subsection 12.4
Concerns about the devaluing of land within the project site; can no longer be a "quiet block" for cattle	Landholder	Section 5 – Land Use Subsection 5.4.5 Section 8 – Rehabilitation Subsection 8.3 and 8.4
Concerns about the total disturbance footprint of the project	Environment group	Section 4 – Project Description Section 8 – Rehabilitation
Road and Transport		
Concerns about the condition of local road networks and impacts of project vehicle movements	Industry groups	Section 19 – Traffic and Transport Subsection 19.2
Concerns about the capacity of local road networks to accommodate additional project-related traffic volumes	Industry group, community member	Section 19 – Traffic and Transport Subsection 19.2
Concerns that the project site will be inaccessible during flood events	Community member, small business owner, landholder	Section 13 – Surface Water
Desire to see proponent cooperation with Adani to plan and carry out infrastructure upgrades	Service provider, industry group	Section 4 – Project Description, and <i>Road Impact Assessment</i> (Appendix O)
Desire to see goods and workforce transportation pass through Clermont	Community member, small business owner	Section 4 – Project Description, and <i>Road Impact Assessment</i> (Appendix O)

ISSUE	STAKEHOLDER TYPE	EIS SECTION REFERENCE
Concerns about the safety impacts of increased traffic on the Peak Downs Highway	Industry group	<i>Socio-Economic Impact Assessment</i> (Appendix N) Subsection 7.5.2
Concerns about the road safety impacts of sleep deprivation for DIDO workers	Industry group	<i>Socio-Economic Impact Assessment</i> (Appendix N) Subsection 7.3.2 and 7.5.2
Concerned about the safety impacts of transporting fuel on the Peak Downs Highway	Industry group	Section 22 – Hazard and Risk and <i>Road Impact Assessment</i> (Appendix O)
Concerns about cumulative impacts of multiple projects and associated off-lease infrastructure construction (rail, roads, port) on road safety and traffic volumes	Industry group	Section 19 – Traffic and Transport Subsection 19.2
Concerns about impacts of the project on local property access roads	Landholders	<i>Socio-Economic Impact Assessment</i> (Appendix N) Subsection 6.6.4
Concerns about increases in travel times to nearest urban centres (Charters Towers, Clermont) as a result of project-related traffic impacts	Landholder	Section 19 – Traffic and Transport Subsection 19.2
Community Liveability		
Concern about increasing numbers of FIFO workers in Clermont and impacts on amenity	Community member	<i>Socio-Economic Impact Assessment</i> (Appendix N) Subsection 5.2.3
Concerns about the impacts of FIFO on mental health and family relationships	Service providers	<i>Socio-Economic Impact Assessment</i> (Appendix N) Subsection 7.3.1
Desire to see FIFO recruited from the same home base location rather than multiple locations	Service provider	<i>Socio-Economic Impact Assessment</i> (Appendix N) Subsection 4.4.1
Desire to see proponents address social obligations to FIFO workers; mental health and family stability	Service provider	<i>Socio-Economic Impact Assessment</i> (Appendix N) Subsection 7.3.1
Concerns that small communities do not have adequate support services for FIFO workers	Service provider	<i>Socio-Economic Impact Assessment</i> (Appendix N) Subsection 4.4.1
Concerns that project-related impacts on the housing market in Charters Towers will further disadvantage low income earners	Service provider	<i>Socio-Economic Impact Assessment</i> (Appendix N) Subsection 6.8
Concerns that the project may contribute to decreasing volunteerism in Charters Towers	Service pro vider	<i>Socio-Economic Impact Assessment</i> (Appendix N) Subsection 6.6.2 and 6.6.7

ISSUE	STAKEHOLDER TYPE	EIS SECTION REFERENCE
Economic Vitality		
Concerns that the rail system is being monopolised for coal transport at the expense of the agriculture industry	Community member	<i>Socio-Economic Impact Assessment</i> (Appendix N) Subsection 5.3.2
Desire to see more disposal income entering the local economy of Charters Towers	Service provider	<i>Socio-Economic Impact Assessment</i> (Appendix N) Subsection 4.4.1 and 6.5.4
Desire to see procurement opportunities associated with the project benefit Charters Towers and Clermont	Community members, local businesses	<i>Socio-Economic Impact Assessment</i> (Appendix N) Subsection 6.5.4, 7.4 and 7.5
Desire to reduce the complexity of engagement with mining companies in order to enable interaction with small local businesses	Local businesses	<i>Socio-Economic Impact Assessment</i> (Appendix N) Subsection 7.4.2
Desire for face-to-face communication between the mines and local businesses	Local businesses	<i>Socio-Economic Impact Assessment</i> (Appendix N) Subsection 7.4.2
Concerns about low business confidence due to local, state and federal government	Local businesses	<i>Socio-Economic Impact Assessment</i> (Appendix N) Subsection 7.4.2
Concerns about limited local spend from FIFO workforces	Local businesses	<i>Socio-Economic Impact Assessment</i> (Appendix N) Subsection 7.4.2

3.7.4 Comments and Questions

In addition to issues and concerns, stakeholders also raised a number of general questions in relation to the sharing of infrastructure with surrounding mines and specific aspects of the project design. These questions related to:

- Level of collaboration with Adani on infrastructure;
- Possibility of supplying power to off-site users such as landholders;
- Approvals necessary to enable the supply of power off site;
- Alternatives to the nominated water source for the project;
- Possible home base locations for the workforce;
- Number of aircraft movements anticipated to transport the project workforce;
- Size of the on-site airstrip; and
- Extent of current exploration activities on site.

These questions were not raised as concerns by stakeholders but rather a general interest in the scale of development anticipated to occur as a result of the project.

All of the issues identified during EIS consultation have been addressed in the EIS. The SIA (Appendix N) identifies the key strategies to manage potential social impacts arising from the project.

3.8 FUTURE CONSULTATION

3.8.1 EIS Feedback Consultation

Face-to-face meetings and/or telephone interviews are proposed to be held with key stakeholders during the EIS public exhibition period to provide feedback on:

- The results of the EIS specialist studies including the proposed management actions; and
- The way in which specific stakeholder issues have been addressed in the EIS.

3.8.2 Future Consultation

Prior to the commencement of construction, the proponent will develop a comprehensive Stakeholder Consultation Strategy. The Stakeholder Consultation Strategy will be implemented during the construction phase and will be updated as necessary for the operations phase of the project.

The objectives of the strategy will include to:

- Continue open and transparent communications with communities of the local area about project activities;
- Maintain stakeholder relationships established during the EIS preparation phase;
- Progress the development of key strategies and plans designed to enhance the delivery of benefits to the local area and manage any potential adverse impacts; and
- Ensure a coordinated approach to project communications.

The communication and engagement approach will be designed to achieve the objectives of the strategy. The strategy will focus on developing and maintaining strategic partnerships and actively collaborating with government and Adani to ensure a coordinated approach to infrastructure upgrades and delivery. Further information on the scope and approach to future consultation is documented in the *Socio-Economic Impact Assessment Report* (Appendix N).

ATTACHMENTS

ATTACHMENT 3-1

Community Information Sheet 1



MACMINES AUSTASIA

Project China Stone

Community Information Sheet

ONE

November 2012

The proponent for Project China Stone is Macmines Austasia Pty Ltd (MacMines). MacMines was established in Queensland in 1999. MacMines' current interests include active coal exploration areas in Central Queensland. MacMines is wholly owned by the Yao family, and is a related entity of Shanxi Meijin Energy Group Limited (Meijin).



Figure 1: Location Plan

Overview

Project China Stone (the project) involves the greenfield development of a large-scale coal mine. The project site is located approximately 270 km south of Townsville and 300 km west of Mackay, at the northern end of the Galilee Basin (Figure 1).

The proponent intends to apply for government approval for the project. An Environmental Impact Statement (EIS) is required to be prepared in support of the application for government approval. The EIS will include a range of environmental and socio-economic studies.

Hansen Bailey, a specialist environmental consulting company, has been engaged by the proponent to prepare the EIS for the project. The EIS preparation process will include consultation with stakeholders who have an interest in the project.

The purpose of this Community Information Sheet is to provide an introduction to the project and a description of the environmental approval and stakeholder engagement process.

Project China Stone

Project Description

The project involves the construction and operation of a large-scale coal mine. Peak raw coal production will be in the order of 60 Million tonnes per annum. Raw coal will be washed to produce thermal coal for export.

The project site is remotely located with the closest townships being Charters Towers, approximately 285 km by road to the north, and Clermont which is approximately 260 km by road to the south-east (Figure 1). The project site is located at the north-western limit of the Isaac Regional Council Local Government Area (LGA) and adjacent to the southern boundary of the Charters Towers Regional Council LGA.

The project site covers an area of approximately 20,000 hectares and is currently used for cattle grazing and coal exploration. The project site is traversed by a number of unsealed farm access tracks and exploration tracks. Infrastructure on this site is limited to minor farm infrastructure including various stock fences and farm dams.

Coal will be mined using both open cut and underground mining methods. The open cut mining operations will be undertaken using truck & shovel and dragline mining methods. Underground mining will involve up to four operating longwalls and potentially top-coal caving.

Coal will be washed and processed on site and product coal will be transported from site to port by rail. Abbot Point is the current preferred coal terminal for export (Figure 1). The majority of the mine infrastructure will be located in the eastern portion of the project site (Figure 2).



The project includes the construction and operation of an on-site power station with a generation capacity of up to 800 MW. It will have sufficient capacity to power the mine and could potentially provide power to other users.

A workforce accommodation village and private airstrip for the transport of mine employees are also proposed on the project site. The peak operations workforce will be in excess of 2,500 people. The peak construction workforce will be larger than the operations workforce.

The following off-lease infrastructure will be required to support the mine:

- The development of suitable port capacity;
- A rail connection from the mine to port; and
- The construction of utility connections to the mine site.

Approvals for the off-lease infrastructure will be sought separately and are beyond the scope of the EIS.

Project Schedule

It is anticipated that mine construction will commence in 2015. First open cut coal production is scheduled to commence in 2017 and first longwall coal production is scheduled to commence in 2019. The mine life will be in excess of 40 years.



Darkies

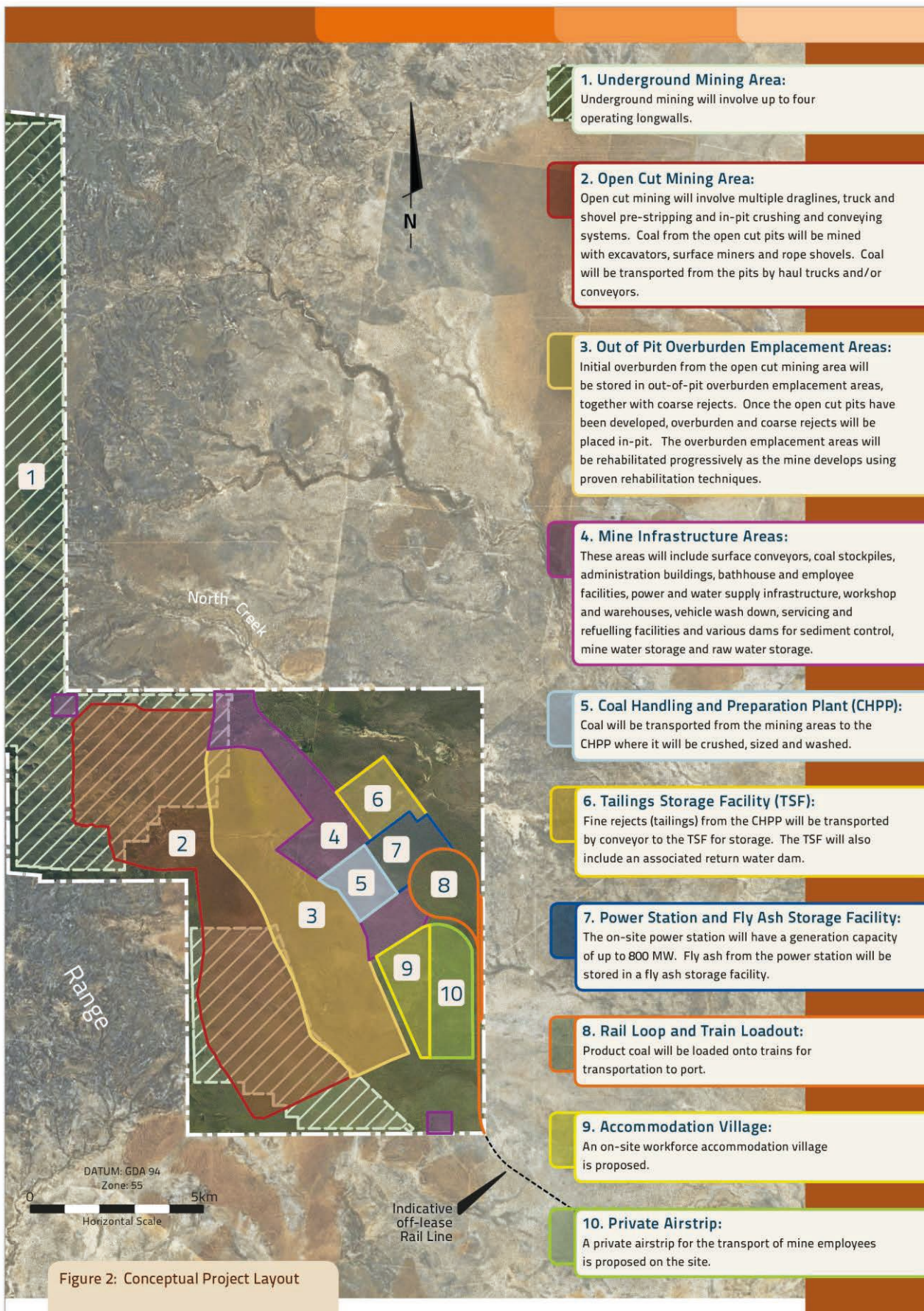


Figure 2: Conceptual Project Layout

The Approval Process

The Coordinator General (CG) declared the project a 'significant project' under the State Development and Public Works Organisation Act 1971 (SDPWO Act) on 31 October 2012. The project EIS will be assessed by the CG and will support an application for an Environmental Authority under the Environmental Protection Act 1994. The flow chart on the right provides a summary of the approval process for the project.

The CG will develop Terms of Reference (TOR) for the EIS that will outline the required scope for the EIS studies. A draft version of the TOR is on public exhibition until 3 December 2012. Stakeholders can comment on the draft TOR and the CG will consider these comments when finalizing the TOR. The draft TOR can be downloaded from the CG's website (www.dlg.qld.gov.au/coordinator-general).

Following the finalization of the TOR, the EIS will be prepared. Once complete, the EIS will be submitted to the CG and placed on public exhibition. During public exhibition of the EIS, stakeholders will be invited to make submissions to the CG on the EIS. The CG will consider any submissions as part of the assessment of the EIS. The EIS is currently scheduled to be submitted in late 2013.



Stakeholder Engagement

A stakeholder consultation program will be conducted throughout the EIS process. The first phase of consultation will involve meetings with stakeholders to provide information about the project and the EIS process, and to identify issues related to the project. These meetings will take place in November and December 2012.

Further Information

If you would like further information about the EIS or the consultation program, or would like to arrange a meeting to discuss the project, please do not hesitate to contact Hansen Bailey.

We look forward to hearing from you.

Approval Process Flowchart



EIS Studies

Specialist studies will be undertaken as part of the EIS to assess the following issues:

- Noise and vibration;
- Air quality and greenhouse gas;
- Aquatic and terrestrial flora and fauna;
- Soils and land capability;
- Rejects disposal;
- Traffic and transportation;
- Surface water;
- Mine water management;
- Groundwater;
- Subsidence and rehabilitation;
- Waste management;
- Cultural heritage; and
- Social and economic impacts.

Bethany Carey - Hansen Bailey
p: (07) 3226 0900
e: bcarey@hansenbailey.com.au

Hansen Bailey
ENVIRONMENTAL CONSULTANTS

ATTACHMENT 3-2

Community Information Sheet 2

Project China Stone

Community Information Sheet

TWO
June 2013

Project China Stone (the project) involves the greenfield development of a large-scale coal mine. The project site is located approximately 270 km south of Townsville and 300 km west of Mackay (Figure 1), at the northern end of the Galilee Basin.

An Environmental Impact Statement (EIS) is being prepared for the project. As part of the EIS process, a stakeholder consultation program is being undertaken. An overview of the project and the approvals process was provided in Community Information Sheet One (CIS 1).

CIS 1 was circulated to the communities of the two closest townships to the project site, Charters Towers and Clermont, in November 2012. It was also provided to key stakeholders at issue scoping meetings conducted during the first round of consultation.

The purpose of this first round of consultation was to identify stakeholders' concerns relating to the project. Stakeholders included landholders within and neighbouring the project site, state and local government agencies, service providers, community groups, Indigenous representatives, small business owners and local residents. Consultation meetings were held in Charters Towers, Townsville, Moranbah, Clermont, Mackay and Brisbane.

Thank you to all the stakeholders who participated in the initial round of EIS consultation with Hansen Bailey.

The proponent for Project China Stone is Macmines Austasia Pty Ltd (MacMines). MacMines was established in Queensland in 1999. MacMines' current interests include active coal exploration areas in Central Queensland. MacMines is wholly owned by the Yao family, and is a related entity of Shanxi Meijin Energy Group Limited (Meijin).



Stakeholder Issues

This information sheet provides a summary of the key issues and questions that were frequently raised during the first round of consultation. It also provides MacMines' responses to these issues and questions.



Project China Stone

Stakeholder Issues

Local and Regional Business Development

Local and regional stakeholders were interested in the potential business opportunities associated with the project.

MacMines Response

- MacMines is committed to maximising the potential opportunities for local and regional businesses to participate in the project.

In order to facilitate this, a business capability study at the local level is being conducted to understand local business capacity and capabilities, and to inform the EIS and project planning. As part of this study, a survey of business conditions in Charters Towers and Clermont is currently being undertaken.

We are keen to speak with the owners and/or operators of businesses located in Charters Towers and Clermont. We are interested in all business operations including industrial, warehouse and storage, accommodation, training and recruitment, retail and hospitality.

If you are interested in participating in a survey please contact Beth Carey on (07) 3226 0900. You can also complete the survey online at www.hansenbailey.com.au/chinastonesurvey.html.

The survey will be accessible until 28 June, 2013 and should take no longer than 10 minutes to complete. Your participation is appreciated.



Workforce Accommodation

Stakeholders raised questions about project workforce accommodation.

Stakeholders were interested in the range of services proposed at the on site accommodation village, such as health and security.

MacMines Response

- Given the remote location of the project site, the project workforce will be accommodated in an on site accommodation village. The Social Impact Assessment (SIA) that will be prepared for the EIS will describe the workforce accommodation, transport arrangements and workforce rosters.
- MacMines has initiated discussions with service providers to develop appropriate servicing arrangements for the accommodation village.



Shared Infrastructure

Stakeholders raised questions in relation to the potential sharing of infrastructure with the neighbouring Carmichael Project for which Adani is the proponent.

MacMines Response

- MacMines acknowledge the potential benefits of sharing infrastructure such as roads, rail, accommodation and airport infrastructure with Adani. MacMines will continue to explore the opportunities for shared infrastructure with Adani.

Common Stakeholder Questions

Where will the workforce be sourced from?

- The preferred source of the project workforce will be from within Australia, focusing primarily on Queensland. In the event that the project workforce cannot be sourced from within Australia, MacMines may look to international labour markets. Investigations in relation to labour availability and sourcing for the project are currently being undertaken to inform the SIA. The labour sourcing assumptions for the project will be outlined in the EIS.

Where will the workforce be based?

- Due to the remote nature of the project site, the project will predominantly offer FIFO employment opportunities. Further research to define the potential residential base locations of the FIFO workforce is currently being undertaken and will inform the SIA and EIS preparation. The anticipated residential base locations of the workforce will be outlined in the EIS.

Will power from the on site power station be available to other users?

- The power station will have sufficient capacity to power the mine, and could potentially provide power to other Galilee Basin coal projects.

What activities are currently occurring on the site?

- Geological exploration activities and EIS fieldwork investigations are currently being undertaken across the project site.

When will construction commence?

- Subject to approvals, it is anticipated that mine construction will commence in 2015, with first coal production occurring in 2017.

Where will the project source its water supply?

- The current preferred water supply for the project is an allocation from the Burdekin Dam via a new pipeline.

Is coal seam gas present on the site?

- Initial investigations indicate that there is negligible coal seam gas present in the coal seams within the project site. The available gas resource is too small to be a viable energy source.

EIS Process Update

In October 2012 the Coordinator General (CG) declared the project a 'significant project' under the *State Development and Public Works Organisation Act 1971*. The draft Terms of Reference (TOR) for the project were placed on public exhibition between 3 November and 3 December 2012.

The Office of the CG released the final TOR on 9 January 2013. Preparation of the EIS has now commenced.

Issues raised during the first round of consultation relating to the potential environmental and social impacts of the project will be addressed in the technical studies undertaken for the EIS. The EIS is currently scheduled to be submitted to the CG in 2014.

Further stakeholder consultation will be undertaken as necessary during the preparation of the EIS. Stakeholder consultation will also be conducted to provide feedback on the results of the EIS during the EIS public exhibition period.

Approval Process Flowchart



Further Information

If you would like further information about the EIS or the consultation program, or would like to arrange a meeting to discuss the project, please do not hesitate to contact Hansen Bailey.

We look forward to hearing from you.

Bethany Carey - Hansen Bailey

p: (07) 3226 0900

e: bcarey@hansenbailey.com.au

Hansen Bailey

ENVIRONMENTAL CONSULTANTS

ATTACHMENT 3-3

Community Information Sheet 3

Project China Stone

Community Information Sheet

THREE

September 2014

The proponent for Project China Stone is Macmines Austasia Pty Ltd (MacMines). MacMines was established in Queensland in 1999. MacMines' current interests include active coal exploration areas in central Queensland. MacMines is wholly owned by the Yao family, and is a related entity of Shanxi Meijin Energy Group Limited.

Project Update

This information sheet provides an update on the preparation of the Environmental Impact Statement (EIS) and a summary of the next steps in the approvals process for Project China Stone (the project).

The project involves the greenfield development of a large-scale coal mine. The project site is located approximately 270 km south of Townsville and 300 km west of Mackay, at the northern end of the Galilee Basin.



As part of the EIS process, a stakeholder consultation program is being undertaken. An initial round of stakeholder consultation was conducted in November 2012. This included consultation with a wide range of stakeholders located in Charters Towers, Townsville, Moranbah, Clermont, Mackay and Brisbane. The purpose of this initial round of consultation was to identify stakeholders' concerns related to the project. Stakeholders consulted

included landholders within and neighbouring the project site, state and local government agencies, service providers, community groups, Indigenous representatives and small business owners.

Based on feedback received during this consultation, a further round of consultation was conducted in June 2013. This second round of consultation included surveys of business capability in Charters Towers

and Clermont. The results of the surveys have been collated and will be presented in the EIS. The findings of the surveys provided valuable information for consideration in the assessment of project socio-economic impacts and in the development of suitable management measures.

We would like to thank everyone who participated in the business capability surveys and in stakeholder consultation conducted for the project to date.

EIS Process Update

The EIS is currently under preparation. Specialist studies are currently being undertaken as part of the EIS to assess the following issues:

- Groundwater;
- Surface water;
- Mine water management;
- Aquatic and terrestrial flora and fauna;
- Soils and land capability;
- Subsidence and rehabilitation;
- Noise and vibration;
- Air quality and greenhouse gas;
- Rejects disposal;
- Waste management;
- Traffic and transportation;
- Cultural heritage; and
- Social and economic impacts.

The project is a 'coordinated project' under the *State Development and Public Works Organisation Act 1971*. The EIS is being prepared to meet the requirements of the Terms of Reference issued by the Coordinator General (CG). The EIS Terms of Reference are available at www.dsdp.qld.gov.au/resources/project/china-stone-coal-project/china-stone-coal-project-tor.pdf.

The project EIS will be assessed by the CG and will support an application for an Environmental Authority under the *Environmental Protection Act 1994*. The flowchart on the right provides a summary of the approval process for the project.

The project will also require an approval from the Commonwealth Department of the Environment (DoE) under the *Environment Protection and Biodiversity Conservation Act 1999* (EPBC Act). A referral to DoE is proposed to be submitted in the near future. DoE will make use of the EIS for its assessment of the project.



Approval Process Flowchart



EIS Exhibition

The EIS is currently scheduled for submission to the Queensland Government in late 2014. Following submission, the EIS will be placed on public exhibition. During the public exhibition phase, further consultation will be conducted with stakeholders to present the key findings of the EIS. Stakeholders will also have the opportunity to make submissions to the CG on the EIS. The CG will consider any submissions as part of the assessment of the EIS. EIS public exhibition is anticipated to occur during early 2015. Stakeholders will be notified of the commencement of public exhibition via a notice in the Courier Mail and a regional newspaper.

Further Information

If you would like further information on the project or the approvals process, please do not hesitate to contact Hansen Bailey.

We look forward to hearing from you.

Bethany Carey - Hansen Bailey
p: (07) 3226 0900
e: bcarey@hansenbailey.com.au

Hansen Bailey
ENVIRONMENTAL CONSULTANTS