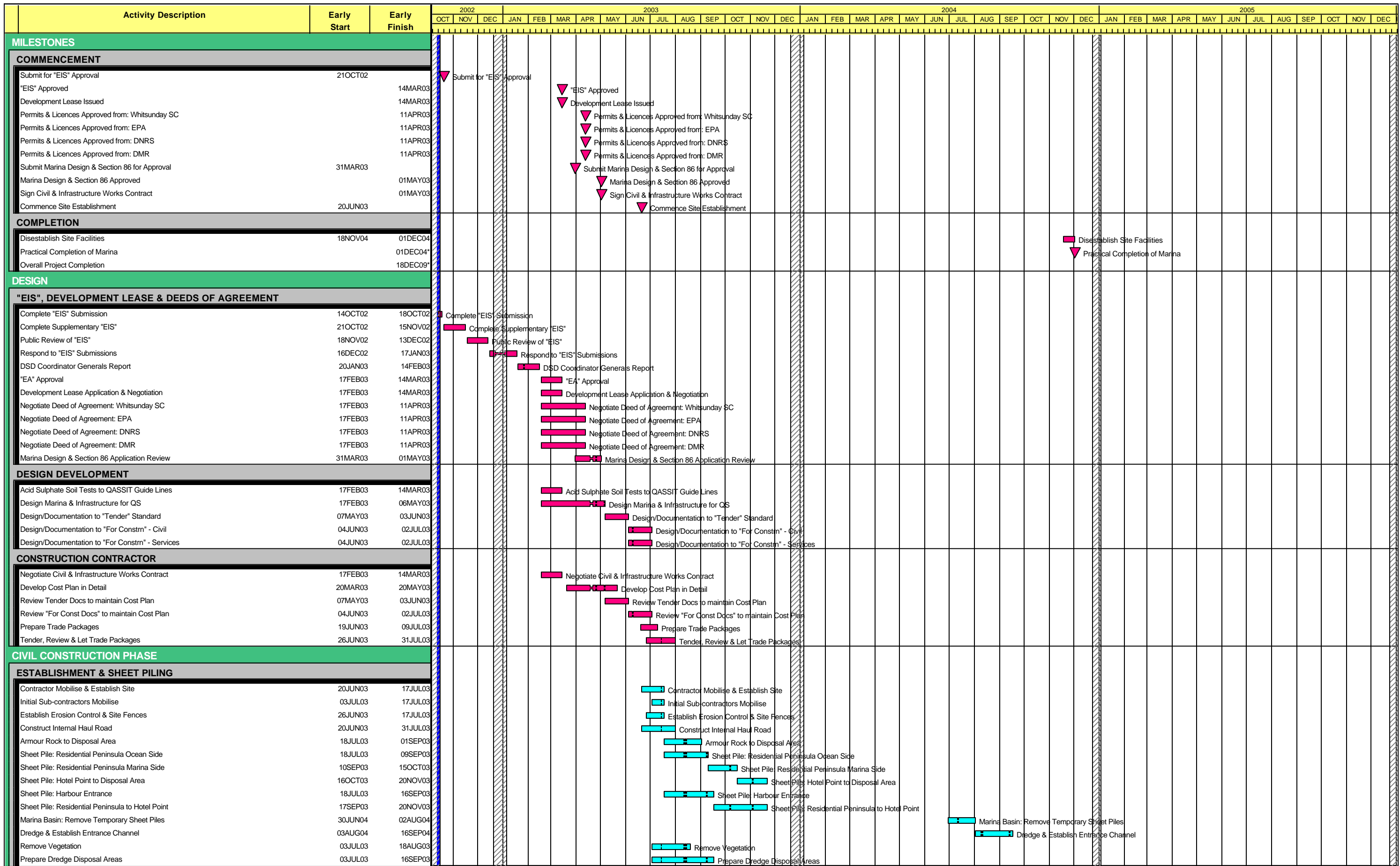


## Appendix C Construction Program

***This page intentionally left blank.***



Date	Revision	Checked	Approved
09OCT02	Issue 1.01 - Preliminary	CW&A	

**Clive Wade & Associates**  
 Phone: +61 7 3374 3211  
 Facsimile: +61 7 3374 3277  
 Mobile: 0418 196 570  
 Email: [clivewad@powerup.com.au](mailto:clivewad@powerup.com.au)  
 Construction Planning Services

***This page intentionally left blank.***



***This page intentionally left blank.***