

1 INTRODUCTION

1.1 WANDOAN COAL PROJECT

The Wandoan Coal Project (referred to as the Project) will comprise of an open cut thermal coal mine and supporting infrastructure, producing approximately 30 million tonnes of Run of Mine (ROM) coal per annum, with the ROM tonnage revised as a result of further feasibility studies. The Project is to be developed by the Wandoan Joint Venture (the WJV).

This Supplementary Environmental Impact Statement (Supplementary EIS) provides additional information to the Project EIS, as requested by the Coordinator-General on 28 August 2009. The Project EIS was released by the Coordinator-General for public consultation from Saturday, 6 December 2008 until Monday 2 February 2009. Sixty-two submissions were received by the Coordinator-General on the EIS.

The Supplementary EIS has considered, and where relevant, provided responses to the issues raised by the submissions and the Coordinator-General. A list of the issues raised by individual submitters is provided within Appendix 1-5-SV1.4.

The Supplementary EIS clarifies, builds on and, where required, amends sections of the EIS based on the submissions received and refinements/modifications made to the Project as it has progressed from pre-feasibility to the feasibility stage.

Many submissions on the EIS appear to be based on a review of the Integrated Executive Summary of the EIS rather than the EIS itself. Where appropriate, the Supplementary EIS including Appendix 1-5-SV1.4 directs the reader to the relevant sections of the Project EIS where more detailed discussion of items are contained, and which in many cases address the issues raised.

This Supplementary EIS has been prepared on behalf of the WJV by Parsons Brinckerhoff (PB) and Xstrata Coal Queensland (XCQ), with specialist input from sub-consultants as required.

For the purposes of addressing issues raised in submissions to the EIS, as well as provision of any required additional information, the Supplementary EIS retains the same general format and major headings used in Chapters of the EIS. In each Chapter, where there was no comment to address or no new information, major headings have been retained but left deliberately blank. Further explanation on the structure of the Supplementary EIS is provided within sub-section 1.5.4 of this Chapter.

1.2 CHANGES TO PROJECT DESCRIPTION

1.2.1 THE PROJECT

The boundaries of the three mining lease applications (MLAs) held by the Wandoan Joint Venture (WJV), MLAs 50229, 50230 and 50231, are proposed to be modified, removing some parcels of land from the MLA areas following further consultation and negotiations with landholders. The proposed revised boundaries of the MLA areas are shown in Figure 6-1-SV1.3. As a consequence the size of the MLA areas is proposed to decrease. The WJV is continuing to consult with adjacent landholders. The proposed revised boundary changes to the MLA areas are yet to be lodged with the Department of Employment, Economic Development and Innovation (DEEDI), formerly the Department of Mines and Energy, and will be lodged as an amendment to the existing mining lease applications prior to recommencing the mine lease process in mid-2010.

The proposed revision to the MLA boundary realignment has resulted in five properties and two residences no longer being within the MLA areas, with one residence to the north of the proposed revised northern boundary of MLA 50229, designated as sensitive receptor MLA-742, and one to the south of MLA 50229, designated as MLA-355 (proposed). The WJV is under negotiations with the property owners to relocate these sensitive receptors to locations that comply with guideline limits at the WJV's expense. These relocated residences and associated buildings have now been assessed as sensitive receptors in the Supplementary EIS.

The EIS and Supplementary EIS have assessed the potential impacts of the Project on sensitive receptors surrounding the MLA areas. Since publication of the EIS, the WJV has purchased or is under negotiations with property owners to purchase properties adjacent to the MLA areas. Where residences are purchased by the WJV (or come under the control or management of the WJV) subsequent to the publication of the EIS, these residences will no longer be treated as sensitive receptors. Table 1-1 identifies properties that are no longer

potential sensitive receptors compared to the EIS, with Figure 6-1-SV1.3 showing the potential sensitive receptors considered in the Supplementary EIS.

Table 1-1: Properties no longer considered potential sensitive receptors compared to the EIS

Potential sensitive receptors	Lot	Plan
MLA-51	43	FT348
MLA-271	37	FT494
MLA-274	37	FT494
MLA-298, 301, 303 and 309	45	FT497
MLA-355 (current)	38	CP899702
MLA-367 and 374	111	FT487
MLA-390	30	FT491
MLA-427	88	FT911
MLA-428	88	FT911
MLA-459	28	FT467
MLA-551 and 552	16	FT1012
MLA-557	3	FT695
MLA-570	7	FT912
MLA-591	59	FT105
MLA-642	154	FT884
MLA-659	2	RP123884
MLA-678 and 728	131	SP121742
MLA-697	40	FT503
MLA-712	39	FT503
MLA-721 and 725	132	SP121742
MLA-740	156	FT931
MLA-741	156	FT931

The key features of the Project are as previously described in the EIS Volumes 1, 2, 3 and 4, with the exception of the following amendments:

- proposed revised mining lease application boundaries, following further landowner consultation
- the mine schedule
- revised rate of mining as a result of further feasibility studies to approximately 30 Mt/a of Run of Mine coal
- the scheduling of mining has been modified for Frank Creek Pit due to its proximity to Wandoan township
- the deferral of Woleebee South Pit from the proposed 30-year life of the mine operations. This pit no longer forms part of the Project
- addition of Wubagul Pit to the south of Wandoan township, adjacent to the Leichhardt Highway following scheduling changes to the Frank Creek Pit and further exploration drilling
- modifications to the coarse and fine (tailings) rejects disposal strategy
- identification of an approximate outline of Glen Haven Pit between Woleebee South Pit and Wubagul Pit, with no mining scheduled within the first thirty years of operation of the mine. This pit does not form part of the Project
- removal of the western coal seam methane (CSM) by-product water supply pipeline as an option to meet the Project's raw water supply for coal washing and other requirements. As a result, no further assessment to Volume 3 of the EIS have been undertaken
- variation to the proposed alignment for the southern CSM by-product water pipeline at its northern end
- refinement of the proposed upgrading of the existing Wandoan town potable water supply treatment facilities, with Western Downs Regional Council confirmed as the Proponent for the upgrading

- refinement of the proposed upgrading of the existing Wandoan town wastewater treatment facilities and wastewater disposal, with Western Downs Regional Council confirmed as the Proponent for the upgrading
- an additional option to develop combined cycle gas fired generators of less than a total of 10MW electrical output for construction and long term emergency power, as an alternative to use of diesel generators
- refinement of the progressive road closures and road relocations over the life of the mine, including local and State roads, and bridges
- refinement of the strategy to transport the operational workforce by air
- the WJV, with Western Downs Regional Council as the Proponent, is still exploring options for development of a municipal waste facility, including a review of sites within or adjacent to the current MLA boundary. If a site within the current MLA area is selected, the site will be excluded from the MLA area.

1.2.2 OBJECTIVES OF THE PROJECT

Following publication of the EIS, due to the Global Financial Crisis, the WJV has reviewed its timeframes regarding the commencement of mining operations, with a revised date for first coal expected to be available for export shipment now approximately 2013.

1.3 PROPONENT PROFILE

1.4 POLICIES OF XSTRATA COAL

1.5 ENVIRONMENTAL IMPACT ASSESSMENT PROCESS, PURPOSE AND METHODOLOGY

1.5.1 THE ENVIRONMENTAL IMPACT STATEMENT AND PROJECT APPROVALS PROCESS

The Proponent can exercise the implementation of the applicable Project approvals in accordance with the *State Development and Public Works Organisation Act 1971* (SDPWO Act). Under s35A(1) of the SDPWO Act, the Coordinator-General's report lapses generally after four years from the day after the report is prepared; or lapses at a time as otherwise may be stated by the Coordinator-General within the report; or lapses if an application for the Project is not approved and appeals are exhausted.

Note that under s35A(2), the Coordinator-General may also advise the Proponent in writing, before the lapsing of the report, that he has fixed a later time for the report to lapse.

Figure 1-1 provides an updated approvals process for the Project, given the progress of the Project into the Supplementary EIS phase.

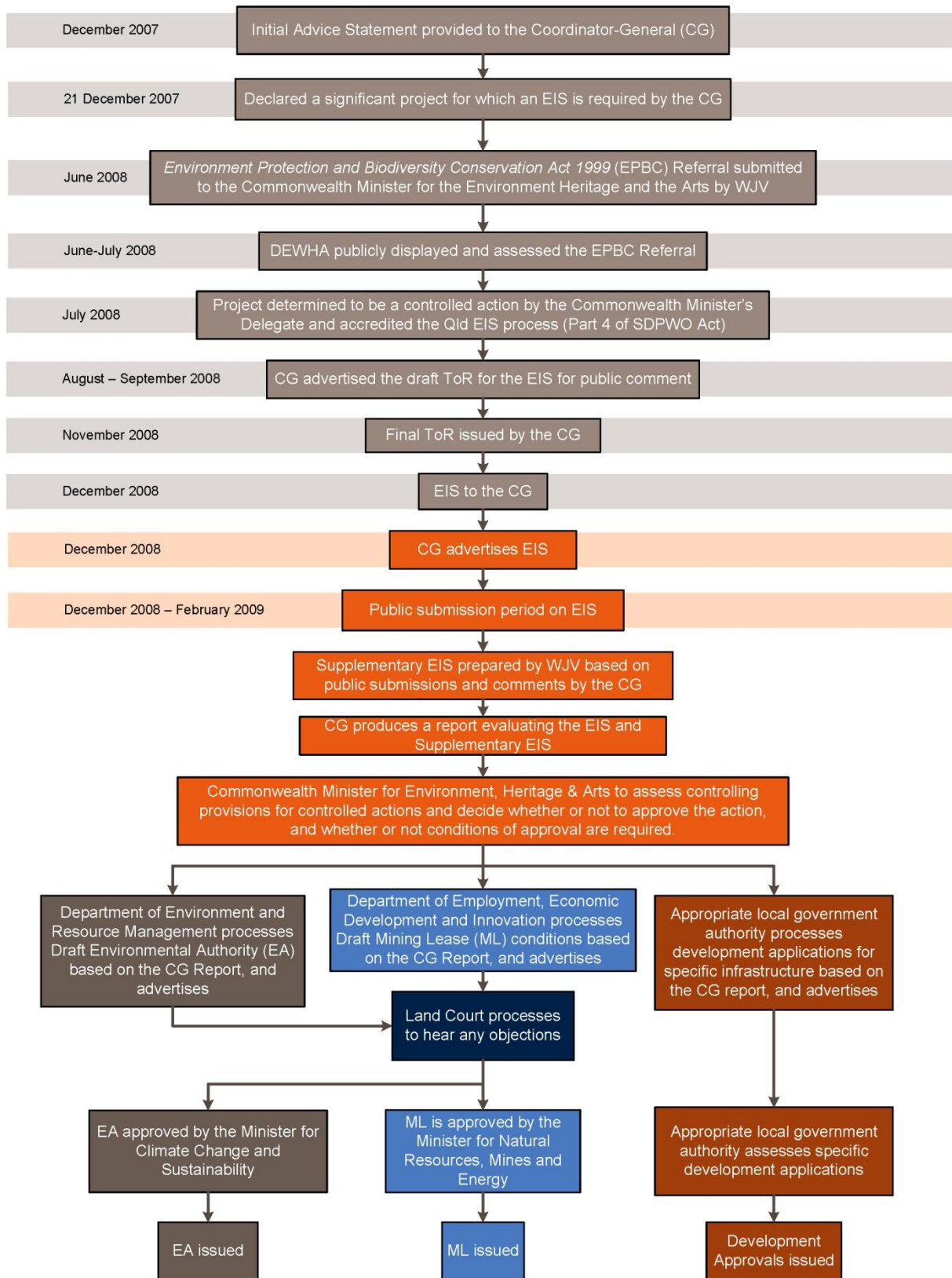


Figure 1-1: Approvals process

1.5.2 PURPOSE OF THE SUPPLEMENTARY EIS

The purpose of the EIS was outlined in the EIS Volume 1, Chapter 1 Introduction, section 1.5.2. The purpose of the Supplementary EIS is to provide any additional information requested by the Coordinator-General that contributes to the overall EIS process, the Project, and the objectives of section 40 of the *Environmental Protection Act 1994*.

1.5.3 SCOPE OF THE SUPPLEMENTARY ENVIRONMENTAL IMPACT STATEMENT

This Supplementary EIS presents responses to submissions raised on the EIS, and impact assessment undertaken as a result of refinements and modifications to the Project since advertising of the EIS for public comment, and builds on the information presented in the EIS. The Supplementary EIS forms part of the overall scope of the EIS, as shown in Figure 1-2 above.

Some submissions questioned the content of the Terms of Reference for the EIS. In accordance with Part 4 of the *State Development and Public Works Organisation Act 1971*, the draft Terms of Reference for the EIS was prepared by the Coordinator-General and released for public and advisory agency comments on 16 August 2008 until 15 September 2008, with 27 submissions received. The Terms of Reference for the EIS were then finalised by the Coordinator-General considering all properly made submissions and other submissions and information.

The EIS and Supplementary EIS have addressed the Terms of Reference, and in addition, have addressed matters additional to those required by the Terms of Reference, where considered appropriate. Refer to Appendix 1-3-SV1.4 for an updated Terms of Reference checklist including the Supplementary EIS.

As stated in the EIS Volume 1, Chapter 6 Project Operations, section 6.3.1, the WJV is seeking a 32 year mining lease (two years for construction and 30 years operation). From this, the scope of impact assessment presented in the EIS and Supplementary EIS examines potential impacts associated with the construction and operational timeframes given, unless specifically stated otherwise in chapters.

1.5.4 STRUCTURE OF THE SUPPLEMENTARY ENVIRONMENTAL IMPACT STATEMENT

The Supplementary EIS is presented as three volumes of work. Reference to each Volume of the EIS, being 1, 2, or 4 is provided where relevant.

Note that the raw water supply option of the western CSM water supply pipeline discussed in Volume 3 of the EIS is no longer being assessed, as the option for supply is no longer a viable option for the Project.

Similar to the EIS, each EIS Volume contains Text, Figures (A3), Appendices, and Technical Reports, with only an Integrated Executive Summary produced. Chapters that have been prepared for the Supplementary EIS for each Volume are shown in Table 1-2. Where a box has been left blank, no chapter has been prepared.

Table 1-2: Chapters prepared for the Supplementary EIS

Volume 1 MLA areas and surrounds	Volume 2 Southern CSM Water Supply Pipeline	Volume 4 Glebe Weir Option
Chapter 1 Introduction		
Chapter 2	Chapter 2	Chapter 2
Chapter 3	Chapter 3	Chapter 3
Chapter 4	Chapter 4	Chapter 4
Chapter 5	Chapter 5	Chapter 5
Chapter 6	Chapter 6	Chapter 6
Chapter 7		Chapter 7
Chapter 8	Chapter 8	Chapter 8
Chapter 9	Chapter 9	Chapter 9
Chapter 10		Chapter 10
Chapter 11		Chapter 11
Chapter 12		Chapter 12
Chapter 13		Chapter 13

Volume 1 MLA areas and surrounds	Volume 2 Southern CSM Water Supply Pipeline	Volume 4 Glebe Weir Option
Chapter 14		Chapter 14
Chapter 15		Chapter 15
Chapter 16		Chapter 16
Chapter 17	Chapter 17	Chapter 17
Chapter 18		Chapter 18
Chapter 19	Chapter 19	Chapter 19
Chapter 20	Chapter 20	Chapter 20
Chapter 21	Chapter 21	Chapter 21
Chapter 22		
Chapter 23		
Chapter 24		
Chapter 25		
Chapter 26		
Chapter 27		
Chapter 28	Chapter 28	

For Volumes 1 and 2, reference to figures, appendices and technical reports produced for the Supplementary EIS incorporates an “S” into each reference, being:

- for figures:
 - › for example EIS Figure 6-3-V1.3 has been superseded by Figure 6-3-SV1.3 in the Supplementary EIS
 - › where no figure was produced in the EIS, but a new figure has been created for the Supplementary EIS, numbering of figures commences after the last figure of the chapter in the EIS, for example the last EIS figure in Volume 1, Chapter 6 Project Operations is Figure 6-41-V1.3, the following new figure is Figure 6-42-SV1.3.
- for appendices:
 - › for example the EIS Appendices for Volume 1, Chapter 1 Introduction includes an additional appendix, Appendix 1-5-SV1.4, which follows the last EIS Volume 1, Chapter 1 Appendix.
- for technical reports:
 - › technical reports presented in the Supplementary EIS are treated as Addendums to the technical reports produced for the EIS
 - › referencing an Addendum to a technical report is provided as, for example, the EIS Volume 1 Chapter 17A Terrestrial Ecology technical report STR 17A-1-V1.5 now has the addendum referenced as STR 17A-1-SV1.5.

1.5.5 SUPPLEMENTARY EIS PREPARATION

Volumes 1 and 2 of the Supplementary EIS have been prepared on behalf of the WJV by Parsons Brinckerhoff (PB) with specialist input from sub-consultants, as listed in Table 1-3:

Table 1-3: Preparers of assessment elements and technical contributors

Element	Preparer or contributor
Project Need and Alternatives	PB
Approvals Process	PB
Community Consultation	WJV and PB
Project Construction	PB
Project Operations	PB
Climate	PB
Land Use	PB
Geology, Mineral Resources, Overburden and Soils	PB
Groundwater	URS and PB
Water Supply and Management	PB
Transportation	PB and Connell Hatch
Air Quality	Katestone Environmental
Greenhouse Gases and Climate Change	URS
Noise	Aurecon
Vibration	Scott Mine Consulting Services Pty Ltd
Terrestrial Ecology	PB, Hansen Botanical Assessments, and Lewis Ecological Services
Aquatic Ecology	frc environmental
Waste Management	PB
Visual Amenity	Integral Landscape Architecture and Visual Planning
Indigenous Cultural Heritage	WJV and Bilvana Archaeological Consultancies
Non-Indigenous Cultural Heritage	Bonhomme Craib and Associates
Social Impact	WJV
Economics	PB and Brennan Mayne Agribusiness
Hazard and Risk Assessment	PB
Health and Safety	PB
Rehabilitation and Decommissioning	PB
Cumulative Impacts	PB
Draft Environmental Management Plan (potable water treatment)	PB
Draft Environmental Management Plan (wastewater treatment)	PB
Legal advice, Tenure, Native Title, Indigenous cultural heritage, and Draft Environmental Management Plan (mining)	Allens Arthur Robinson
Mining	Xenith Consulting Pty Ltd
Coal handling and preparation	Sedgman Limited and WJV
Environmental Monitoring Equipment	Ecowise Environmental

Appendix 1-4-SV1.4 includes a list of personnel involved in the preparation of the Supplementary EIS for Volumes 1 and 2.

Volume 4 of the EIS has been prepared on behalf of the WJV by SunWater Pty Limited.

1.5.6 GENERAL SUPPLEMENTARY EIS METHODOLOGY

The same scenarios used in the EIS have been applied in the Supplementary EIS. However, the assumed years represented by each scenario, such as 2012, 2016, 2021, 2031 and 2041 are not applicable for the Supplementary EIS, due to changes in the commencement of operations, as described in section 1.2.2.

1.5.7 SUBMISSIONS

As noted, sixty-two submissions were received by the Coordinator-General on the EIS. These submissions have been considered in the preparation of the Supplementary EIS, and responses provided where considered appropriate.

Appendix 1-5-SV1.4 provides a reference checklist of responses to the submissions sought by the Coordinator-General. Where relevant, sections of each submission are provided with a reference to the appropriate section of the Supplementary EIS that provides a response.

For ease of reference, responses have been categorised by subject into the various Supplementary EIS Volumes, Chapter headings, and sections, for example 'Supplementary EIS Volume 1, Chapter 8 Land Use, section 8.3.6'. Each response in Appendix 1-5-SV1.4 is appropriately cross referenced to each of the corresponding EIS Supplementary Chapters and sections, using the same chapter headings and format from the EIS.

In the reference checklist in Appendix 1-5-SV1.4, where a response to a submission states 'Noted', this indicates that the submission comment has been considered, but no response prepared due to either the nature of the submission comment or where the Wandoan Joint Venture believes that no response is required and has been agreed with the Department of Infrastructure and Planning.

Where a submission has specially referred to other projects or coal mines, proposed or operating, and their performance and impacts, no specific comparison is drawn or discussion undertaken, as the Wandoan Joint Venture is unable to comment on the performance and impacts of proposed and/operating projects beyond its direct control.

1.6 REFERENCES