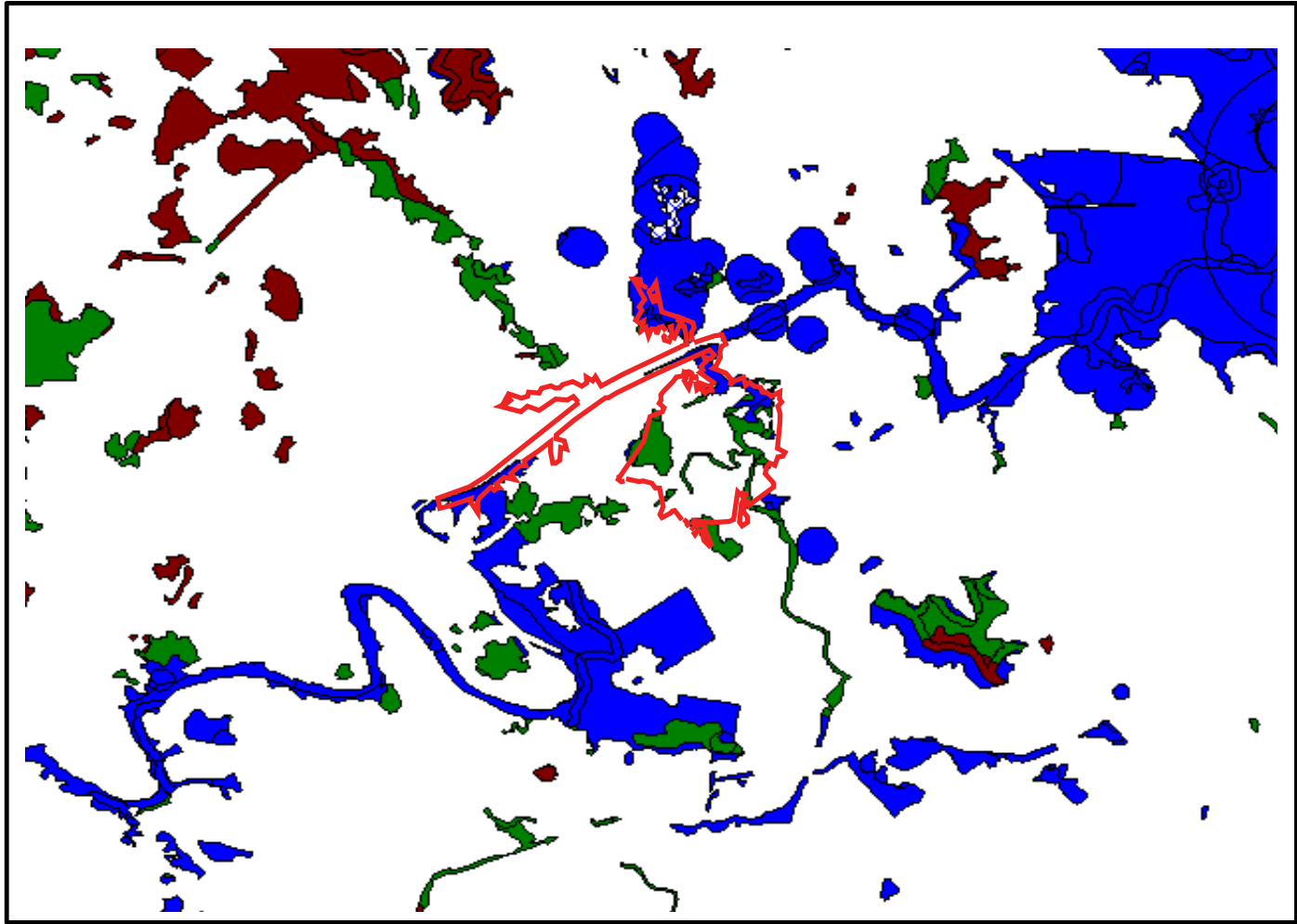







### BRBS: Biodiversity Significance

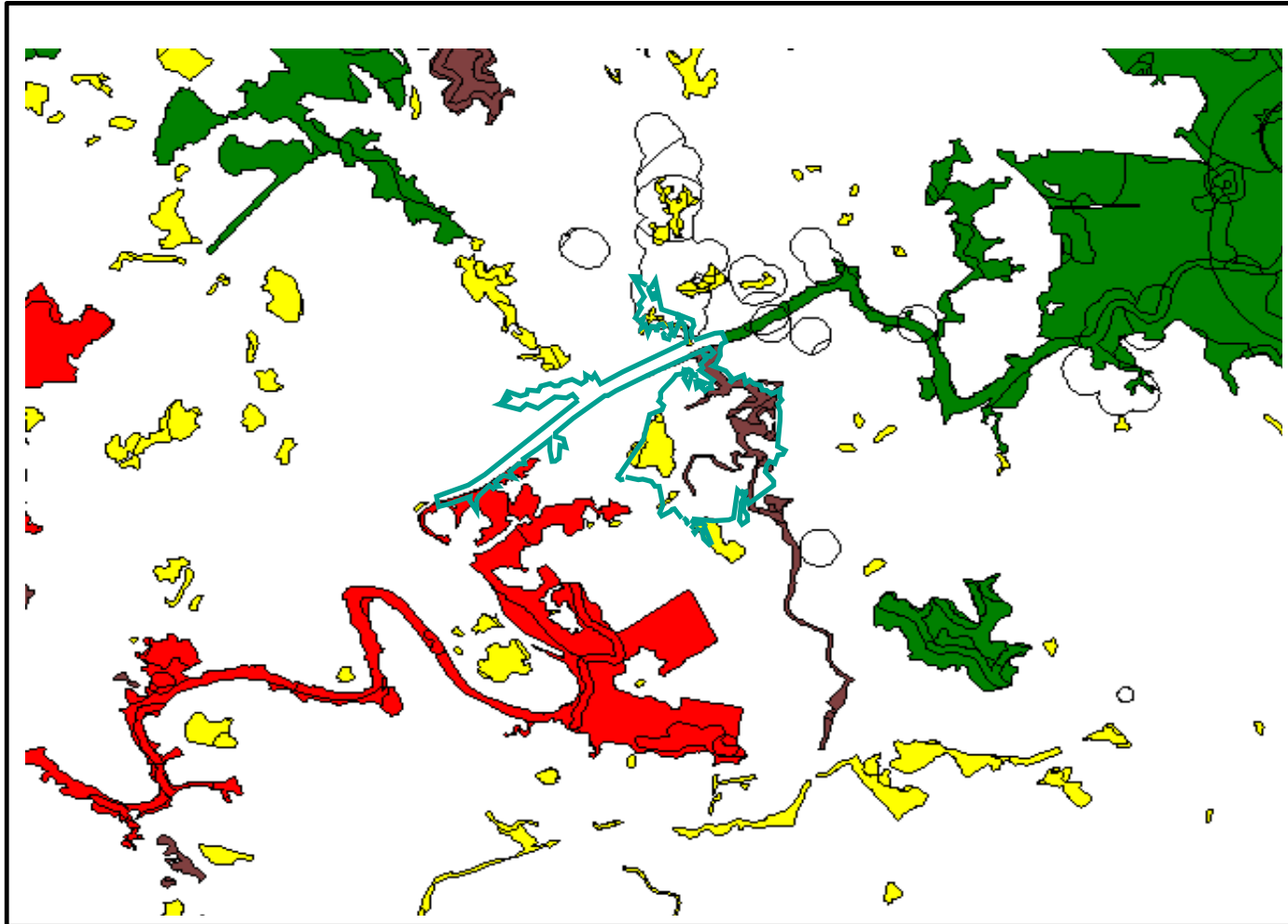


BRBS: Biodiversity Significance (BIO\_SIG)

-  Local or Other Values
-  Non Bioregion Ecosystem
-  Regional
-  State
-  State Habitat for EVR taxa



### BRBS: Tract Size

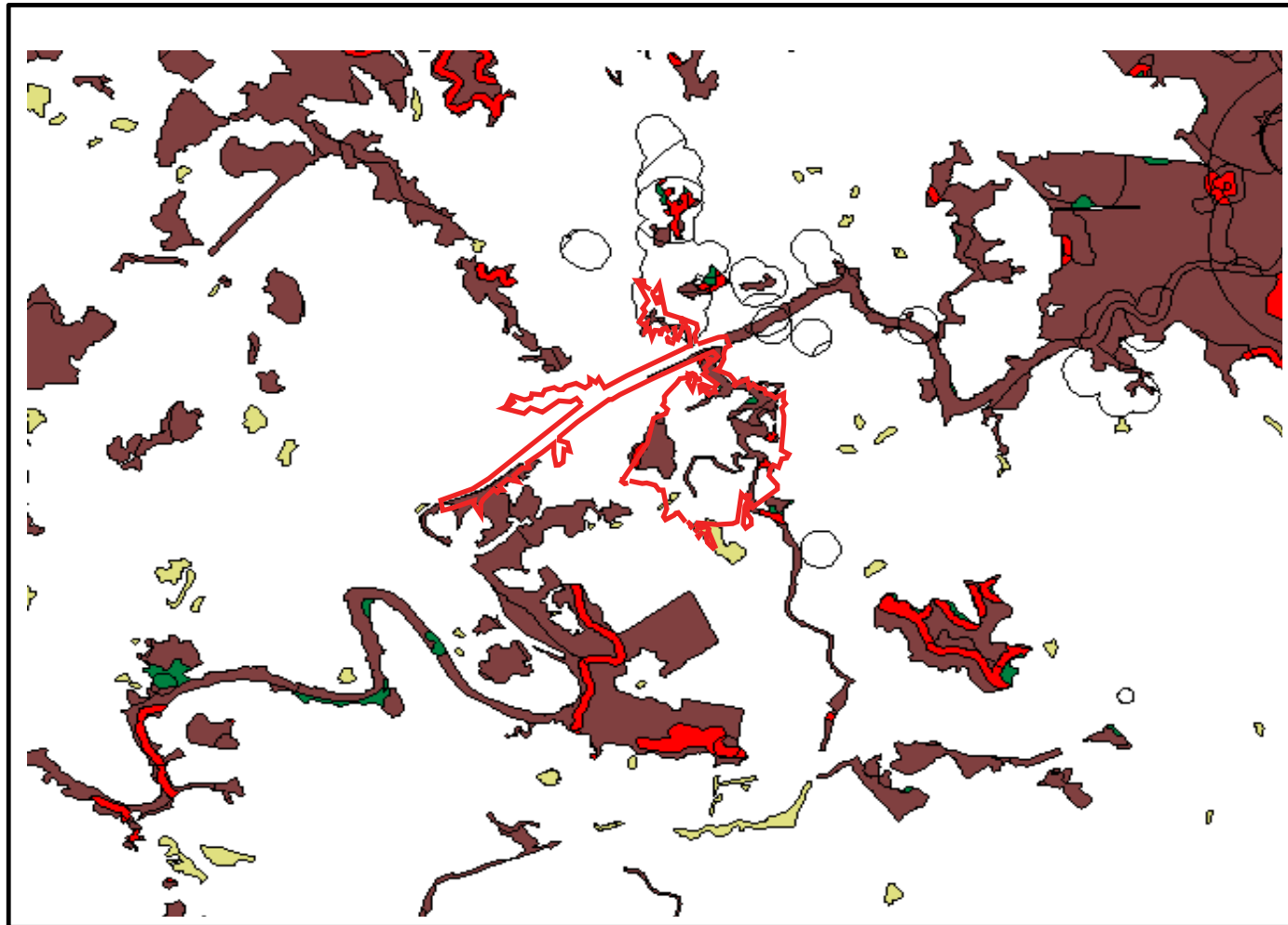


BRBS: Tract Size (C\_RATING)

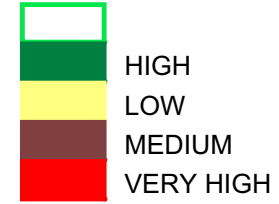
-  HIGH
-  LOW
-  MEDIUM
-  VERY HIGH



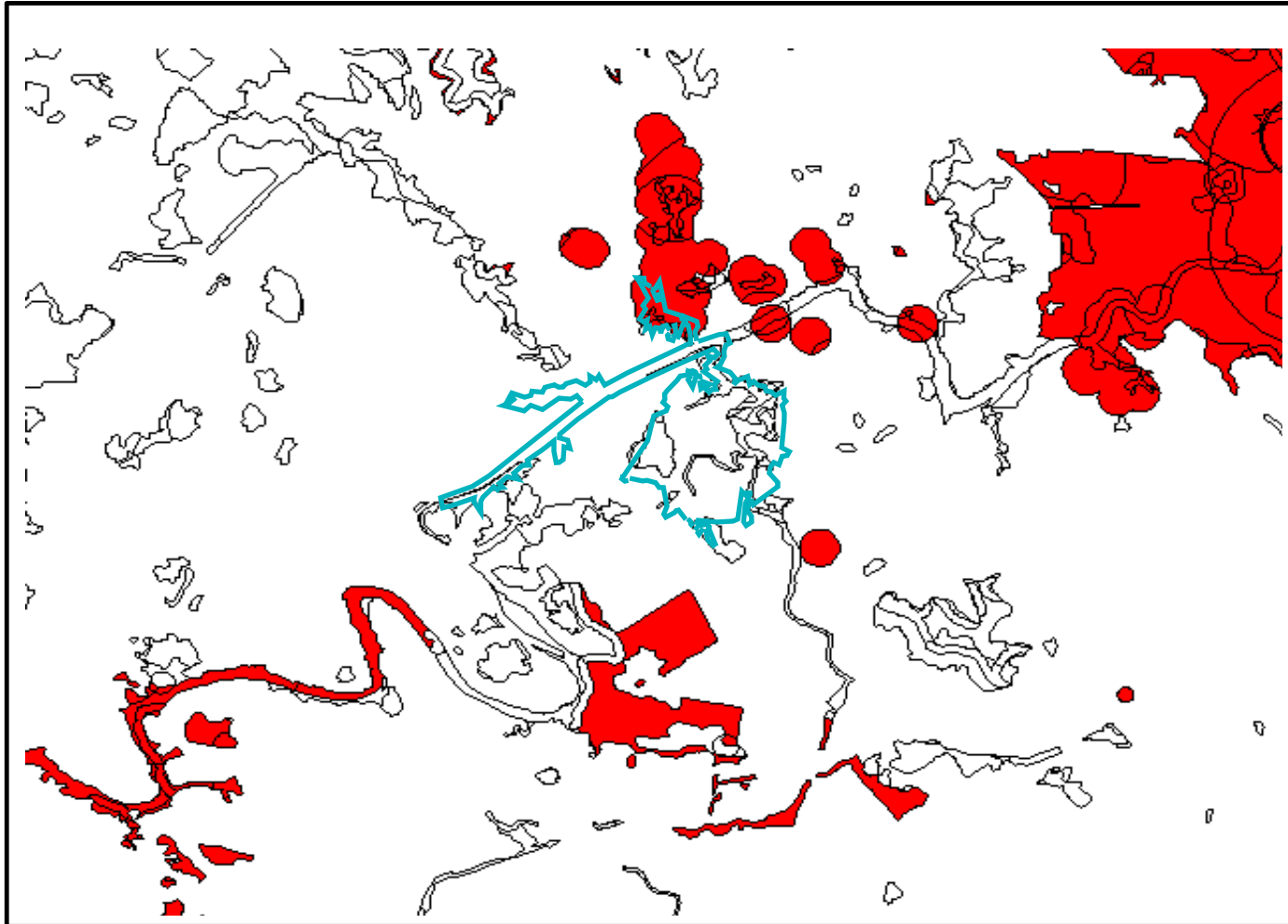
### BRBS: Context & Connection



BRBS: Context & Connection (G\_RATING)



### BRBS: Special Biodiversity Values

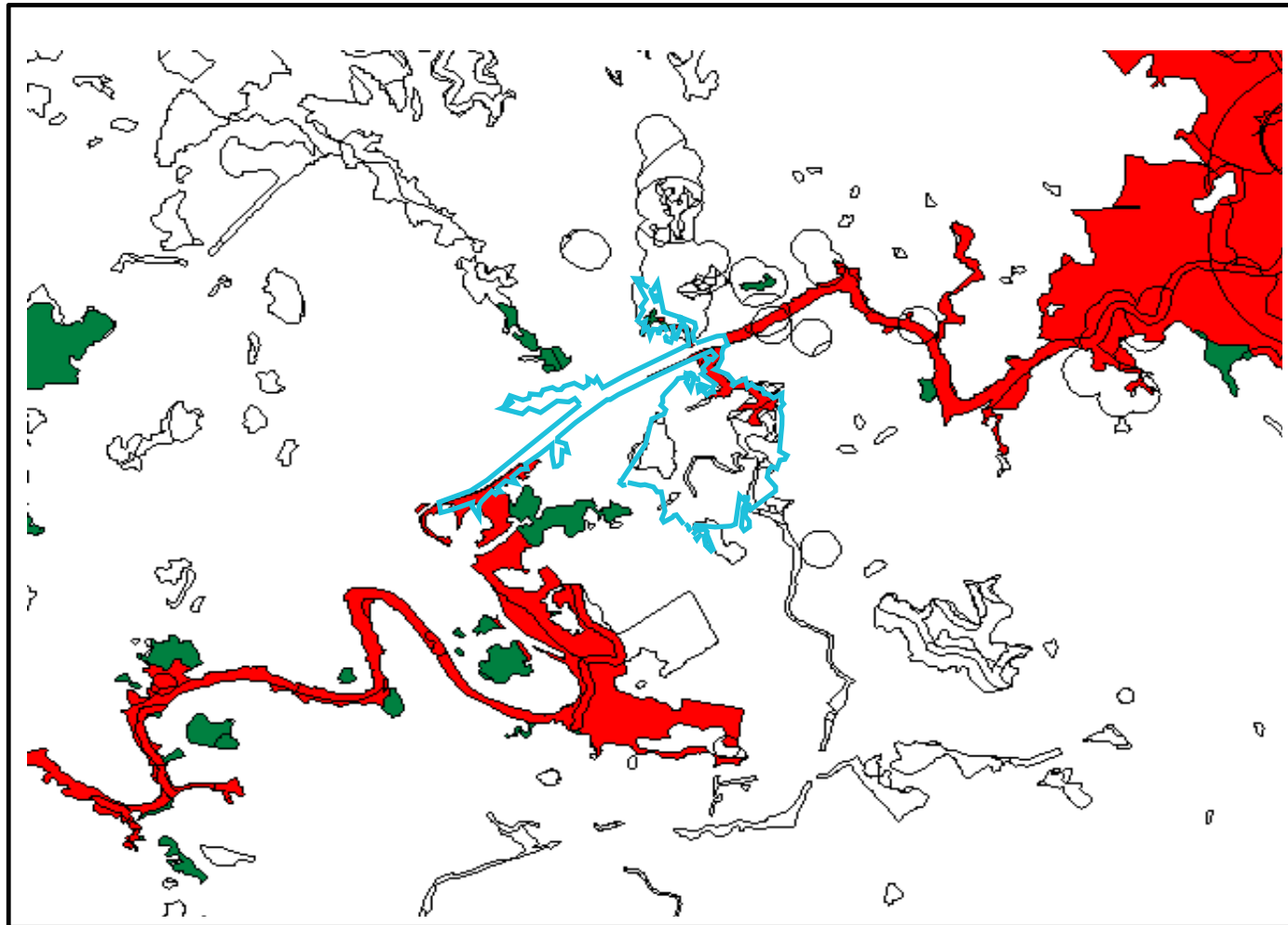


BRBS: Special Biodiversity Values (I\_RATING)

White	N
Red	Y



### BRBS: Corridors



BRBS: Corridors (J\_RATING)

