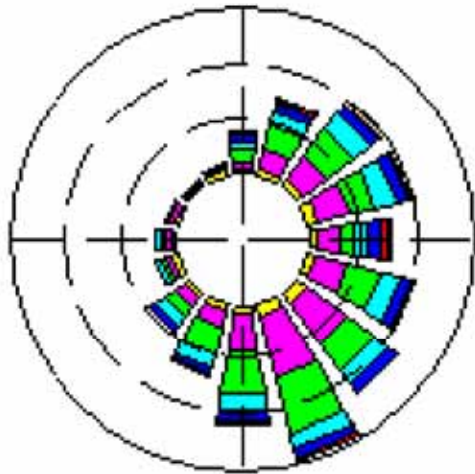
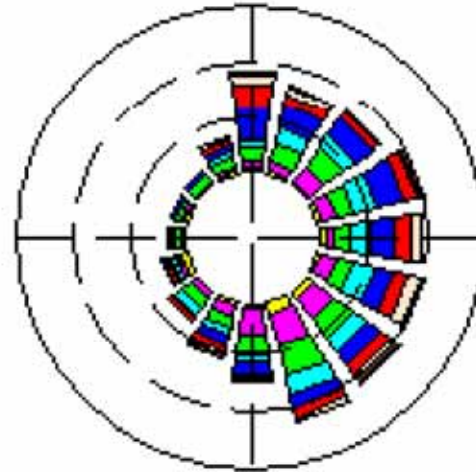


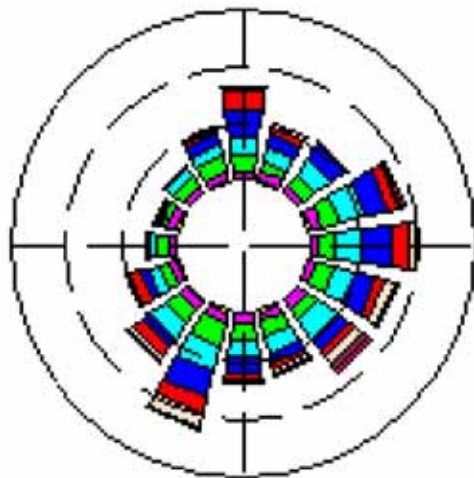
Midnight - 6am



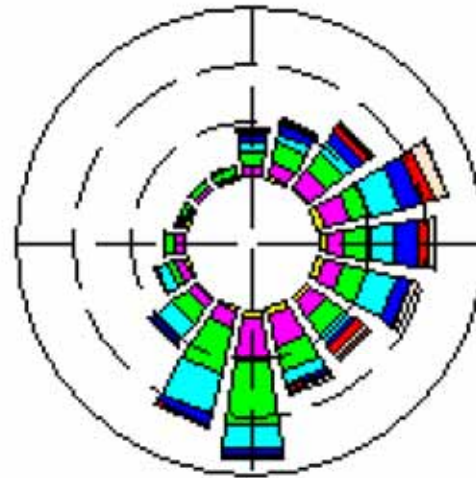
6am - Midday



Midday - 6pm



6pm - Midnight



Each ring is 5.0% of frequency
Wind speed (m/s)

>= 10.0	Orange
9.0 to < 10.0	Green
8.0 to < 9.0	Magenta
7.0 to < 8.0	Brown
6.0 to < 7.0	Light Brown
5.0 to < 6.0	Red
4.0 to < 5.0	Blue
3.0 to < 4.0	Cyan
2.0 to < 3.0	Light Green
1.0 to < 2.0	Pink
0.0 to < 1.0	Yellow

