

J:\A353-EN\PLN\REF\Ecology\Wandoan\10_GIS_Restore\Peter\Projects\Volume_2\133006C_2006_WandoanEcoReport_SWC_BPA_Vol2.mxd VB - 06.11.08

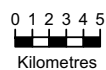
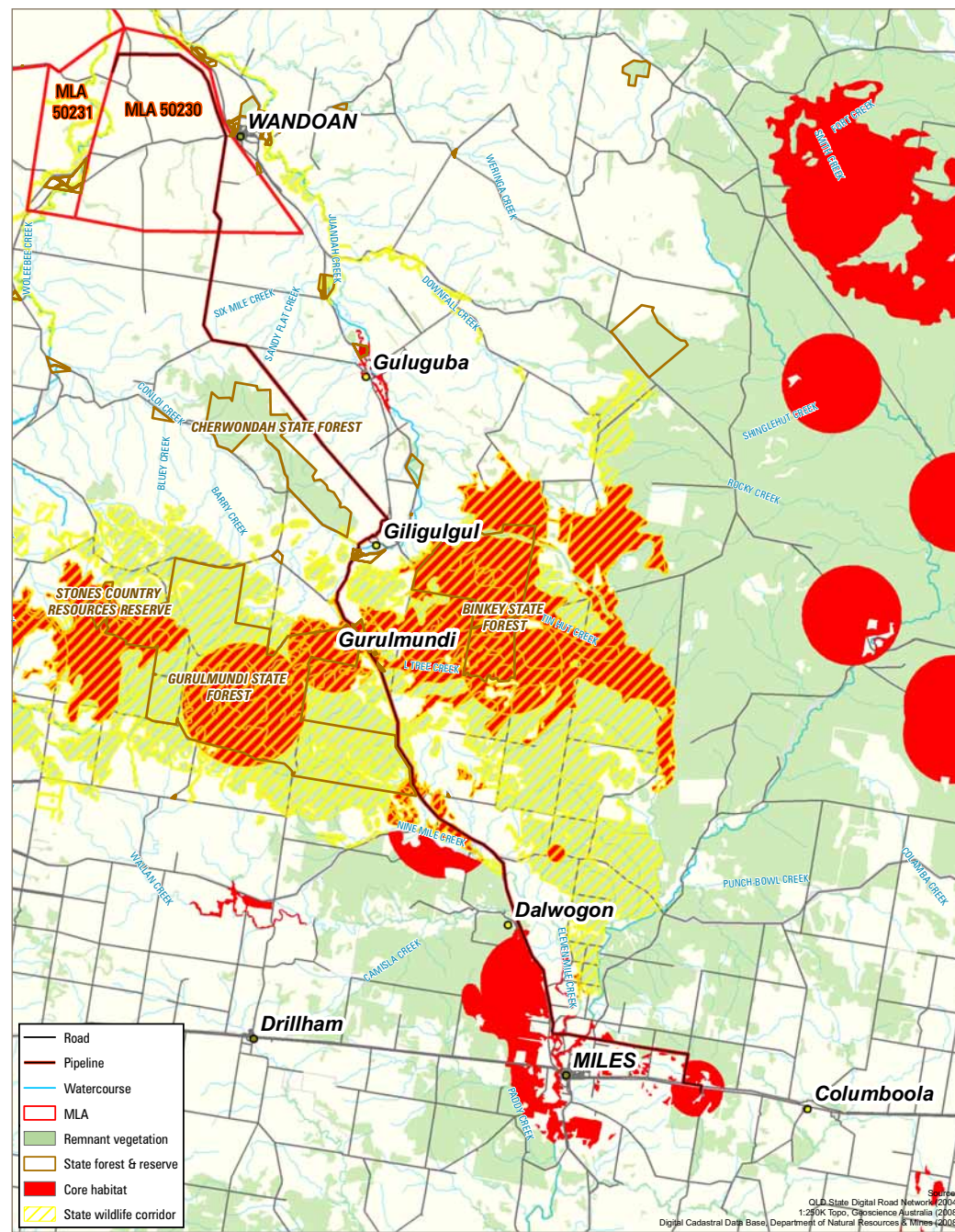
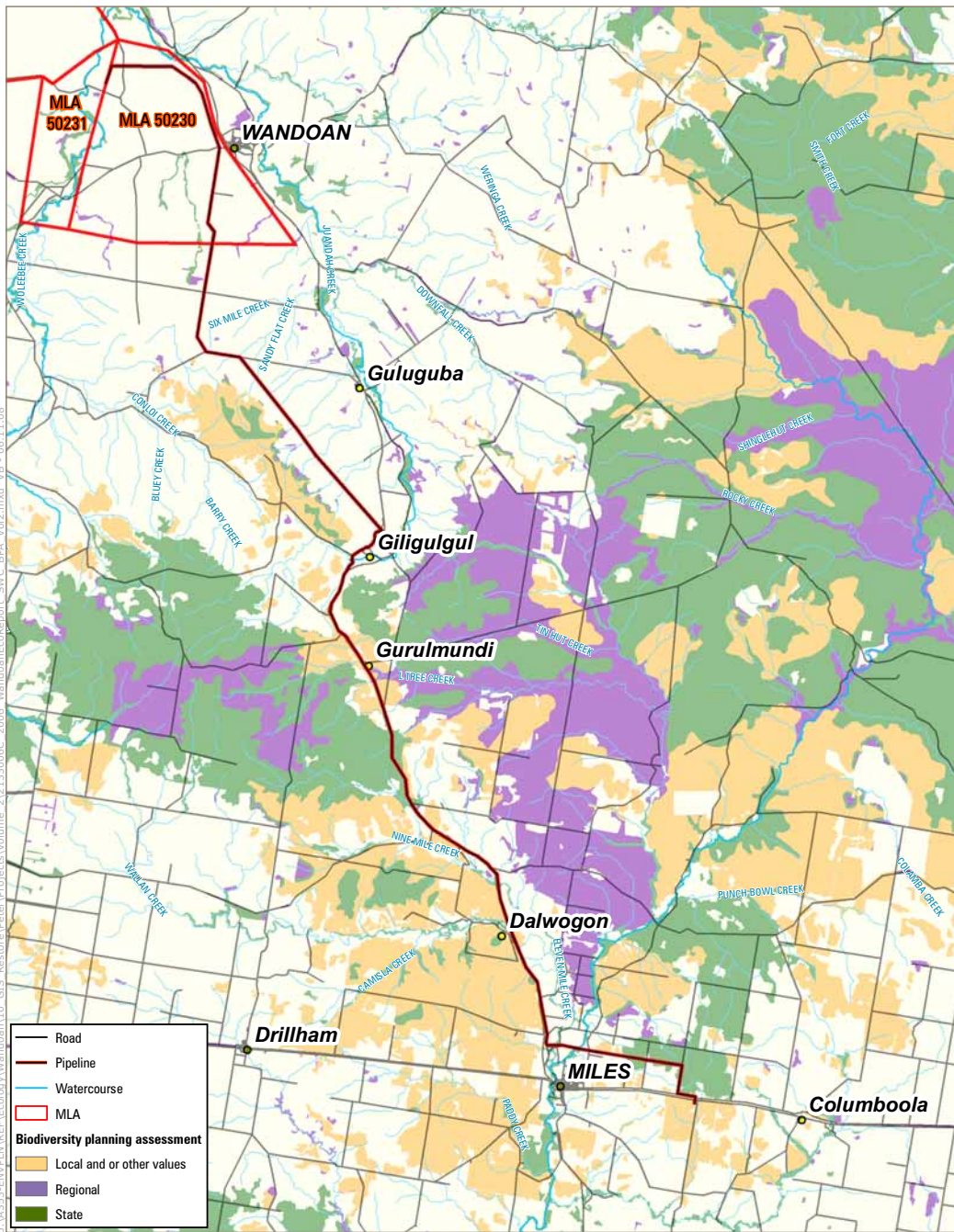


Figure 17A-4-V2.3
State Wildlife Corridors, Core Habitats and Biodiversity Planning Assessment

Source: CLM State Digital Road Network (2/04) 1:250K Topo, Geoscience Australia (2/08) Digital Cadastral Data Base, Department of Natural Resources & Mines (2/08)