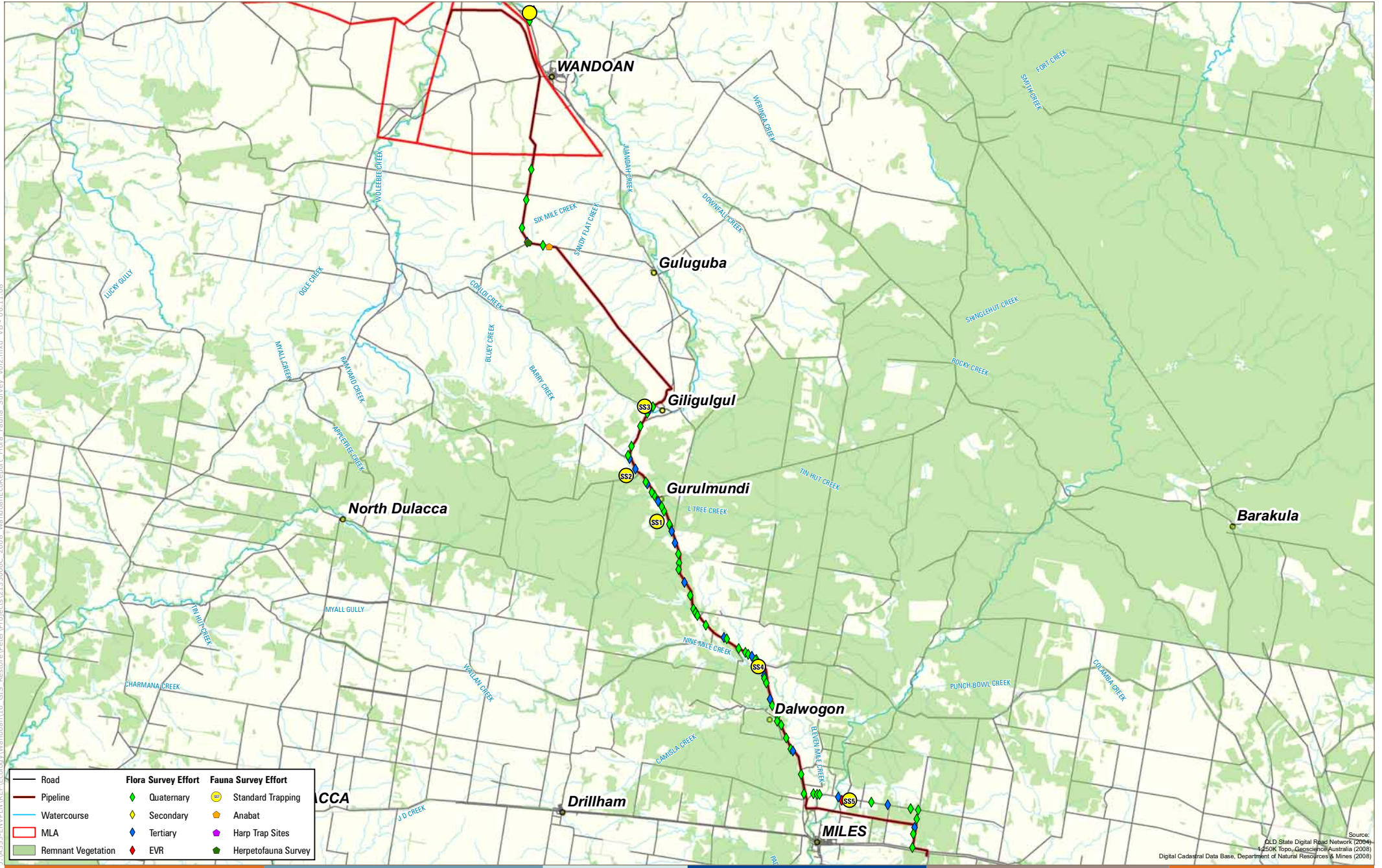


J:\A353-ENV\PLN\REF\Ecology\Wandoan\10_GIS_Restore\Project\Projects\2133006C_2008_Wandoan\ecoreport_Flora_Fauna_Survey_Vol2.mxd VB - 06.11.08



Source:
 QLD State Digital Road Network (2004)
 1:250K Topo, Geoscience Australia (2008)
 Digital Cadastral Data Base, Department of Natural Resources & Mines (2008)

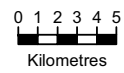


Figure 17A-1-V2.3
 Flora and fauna survey in the study area