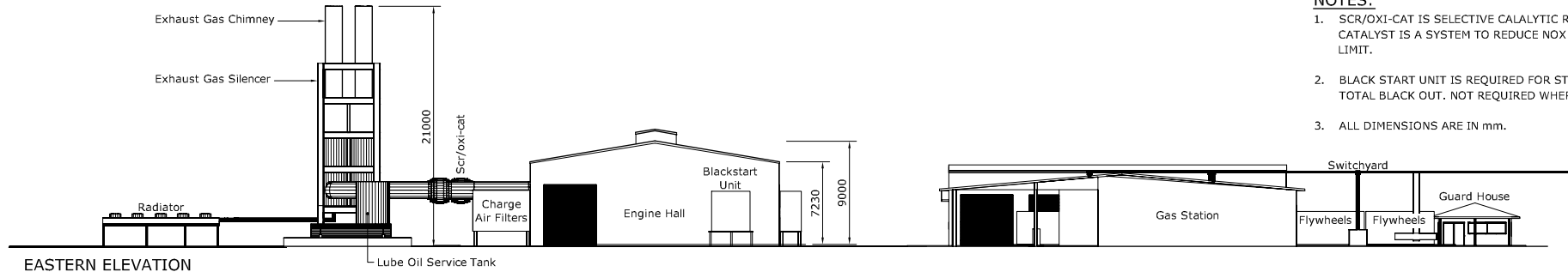


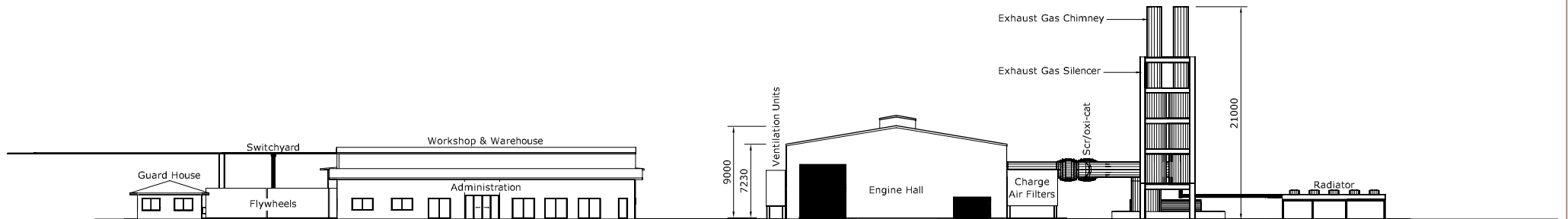
NORTHERN ELEVATION

NOTES:

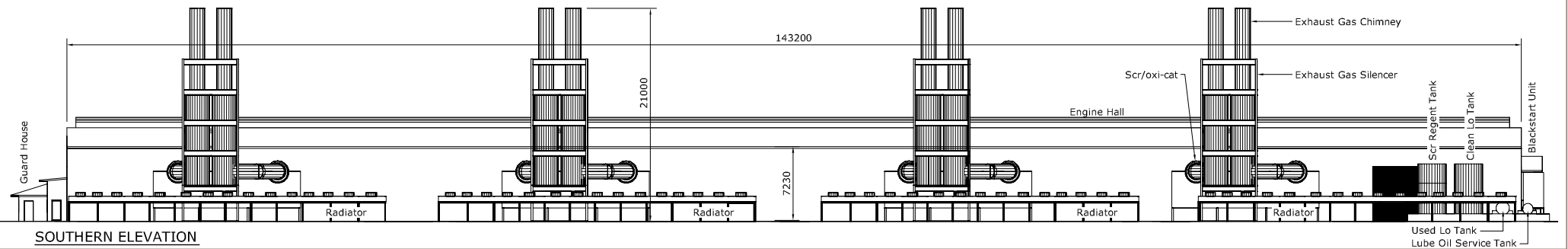
1. SCR/OXI-CAT IS SELECTIVE CATALYTIC REDUCTION OXIDATION CATALYST IS A SYSTEM TO REDUCE NOX TO MEET NOX EMISSION LIMIT.
2. BLACK START UNIT IS REQUIRED FOR STARTING THE STATION FROM TOTAL BLACK OUT. NOT REQUIRED WHERE GRID POWER IS AVAILABLE.
3. ALL DIMENSIONS ARE IN mm.



EASTERN ELEVATION



WESTERN ELEVATION



SOUTHERN ELEVATION

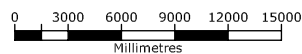


Figure 6-38-V1.3
Indicative Elevation - 80MW Gas-Fired Power Station Option