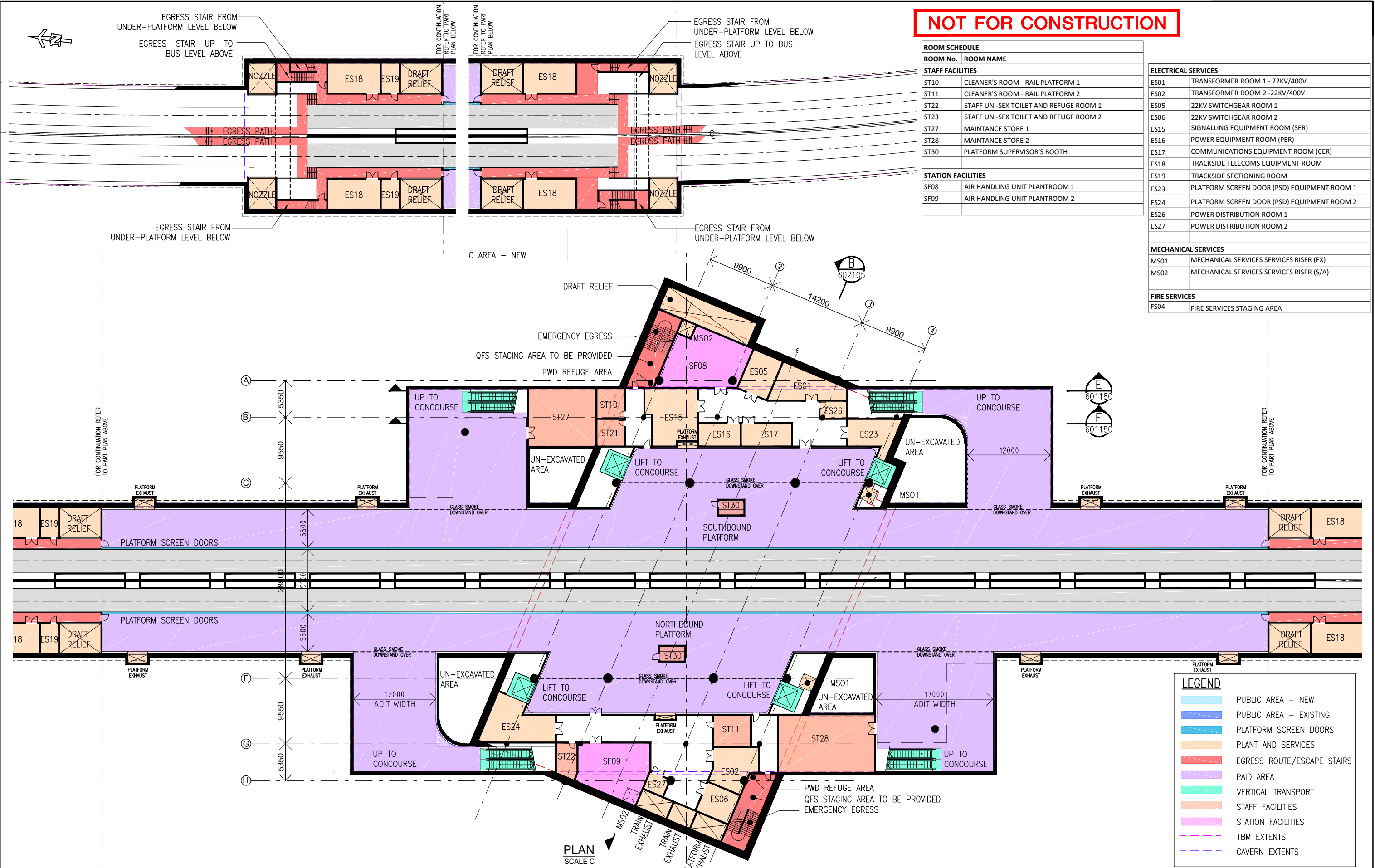


**NOT FOR CONSTRUCTION**



ROOM No.	ROOM NAME
<b>STAFF FACILITIES</b>	
ST10	CLEANER'S ROOM - RAIL PLATFORM 1
ST11	CLEANER'S ROOM - RAIL PLATFORM 2
ST22	STAFF UNI-SEX TOILET AND REFUGE ROOM 1
ST23	STAFF UNI-SEX TOILET AND REFUGE ROOM 2
ST27	MAINTNANCE STORE 1
ST28	MAINTNANCE STORE 2
ST30	PLATFORM SUPERVISOR'S BOOTH
<b>STATION FACILITIES</b>	
SF08	AIR HANDLING UNIT PLANTROOM 1
SF09	AIR HANDLING UNIT PLANTROOM 2

<b>ELECTRICAL SERVICES</b>	
ES01	TRANSFORMER ROOM 1 - 22KV/400V
ES02	TRANSFORMER ROOM 2 -22KV/400V
ES05	22KV SWITCHGEAR ROOM 1
ES06	22KV SWITCHGEAR ROOM 2
ES15	SIGNALLING EQUIPMENT ROOM (SER)
ES16	POWER EQUIPMENT ROOM (PER)
ES17	COMMUNICATIONS EQUIPMENT ROOM (CER)
ES18	TRACKSIDE TELECOMS EQUIPMENT ROOM
ES19	TRACKSIDE SECTIONING ROOM
ES23	PLATFORM SCREEN DOOR (PSD) EQUIPMENT ROOM 1
ES24	PLATFORM SCREEN DOOR (PSD) EQUIPMENT ROOM 2
ES26	POWER DISTRIBUTION ROOM 1
ES27	POWER DISTRIBUTION ROOM 2
<b>MECHANICAL SERVICES</b>	
MS01	MECHANICAL SERVICES SERVICES RISER (EX)
MS02	MECHANICAL SERVICES SERVICES RISER (S/A)
<b>FIRE SERVICES</b>	
FS04	FIRE SERVICES STAGING AREA

<b>LEGEND</b>	
	PUBLIC AREA - NEW
	PUBLIC AREA - EXISTING
	PLATFORM SCREEN DOORS
	PLANT AND SERVICES
	EGRESS ROUTE/ESCAPE STAIRS
	PAID AREA
	VERTICAL TRANSPORT
	STAFF FACILITIES
	STATION FACILITIES
	TBM EXTENTS
	CAVERN EXTENTS

Associated Job Nos		Survey Data		Scales		BRISBANE CITY				ROMA STREET STATION			
Auxiliary Drg Nos		Datum		SCALE C		BaT (BUS AND TRAIN PROJECT)				RAIL LEVEL			
		Horiz. Grid		1 : 500 (A3) 1 : 250 (A1)		REFERENCE DESIGN				T.O.R. RL -17.520M PLATFORM RL -16.47M			
Revisions/Descriptions		Certification		Dimensions shown in metres except where shown otherwise		Reference Points				ENGINEERING CERTIFICATION			
2 ISSUED FOR EIS		01/08/14		Last Modified :- Aug 01, 2014 - 10:01am		Preceding RP				Drawn B.J.M			
1 REVISED REFERENCE DESIGN		30/06/14		Through Chainage from		Dist. to start of job (km)				ENG. AREA			
0 REFERENCE DESIGN		06/06/14				From start to end of job				LEAD			
						From end to Following RP				NAME			
						Following RP				SIGNATURE			
										NO.			
										DATE			
										01/08/14			
										A.D.W			
										A.J.R			
										Contract No.			
										601180			
										Series Number			
										1 of			
										MRR_Detail (06/13)			

