



BaT project

Appendix E Soils and topography



Contents

Appendix E. Soils and topography.....	1
E.1 Soils and topography	1
E.2 Contaminated land	5
E.3 Geotechnical investigations	71
E.4 Settlement mapping	74

Appendix E. Soils and topography

E.1 Soils and topography

Table E-1 General characteristics of the geological formations within the study corridor

Map symbol	Age			Formation name	Lithotypes	Area present	General characteristics			
	Era	Period	Epoch				Weathering	Soils	Erodibility	Slope stability
Qhe	Cainozoic	Quaternary	Holocene	Holocene Alluvium (Estuarine channels and banks)	Estuarine channel and banks; sandy mud, muddy sand, minor gravel	Dominant parent material associated with the sediments of the Brisbane River channel	N/A	Sandy mud, muddy sand and minor gravel	Susceptible to erosion but severity depends on local topography, drainage, nature of clays, earthworks	Unstable, would require engineered support where excavated into. Erosion protection would be required around bridges, culverts and structures
Qa	Cainozoic	Quaternary	Undifferentiated	Quaternary Alluvium	Flood plain alluvium; clay, silt, sand, gravel	Dominant parent material in low elevation areas in the vicinity of the Spring Hill, the CBD and Woolloongabba	N/A	Clay, silt, sand and gravel of variable strength or density	Susceptible to erosion but severity depends on local topography, drainage, nature of clays, earthworks.	Unstable, would require engineered support where excavated into. Erosion protection would be required around bridges, culverts and structures

Map symbol	Age			Formation name	Lithotypes	Area present	General characteristics			
	Era	Period	Epoch				Weathering	Soils	Erodibility	Slope stability
Rip	Mesozoic	Triassic	Late	Aspley Formation	Sandstone, conglomerate, sandstone, shale	Dominant parent rock Park Road Station to Dutton Park Station	Often very deeply weathered with marked reduction in rock strength	Clayey, occasionally sandy or gravelly sometimes high plasticity	Variable resistance to erosion depending on bedrock type and local deep weathering	Low batter angles and slope protection required for shallow cuts, full support required for deeper cuts
Rif	Mesozoic	Triassic	Late	Brisbane Tuff	Rhyolitic Tuff, ignimbrite, agglomerate, conglomerate, sandstone, shale	Dominant parent rock through the areas of elevation Kangaroo Point to Dutton Park	Usually very shallow depth of weathering but moderately weathered Tuff is strong rock	Very shallow, clayey	Welded Tuff highly resistant to erosion, stratified Tuff tends to fret. Fine grained basal sediments fret, breccias pluck and ravel	Steep faces with occasional rock bolting possible in fresh and slightly weathered Tuff. Selective support and protection in moderately weathered Tuff. Basal sediments often marginally stable

Map symbol	Age			Formation name	Lithotypes	Area present	General characteristics			
	Era	Period	Epoch				Weathering	Soils	Erodibility	Slope stability
DCf	Palaeozoic	Devonian -Carboniferous		Neranleigh Fernvale Beds	Mudstone, shale, arenite, chert, jasper, basic metavolcanics, pillow lava, conglomerate, metamorphosed to greenschist facies	Dominant parent rock through areas of high elevation and exposed ridge lines in Spring Hill, the CBD and South Brisbane	Shallow to moderate depth of weathering, often with penetrative weathering along fractures with the development of clay infill	Shallow clayey gravels/ gravelly clays, non-expansive	Erosion resistant	Low batter angles are necessary with shallow cuts in highly weathered rock. Deeper cuts into less weathered rock usually quite stable depending on orientation of foliation and joint sets, otherwise selective support required

Map symbol	Age			Formation name	Lithotypes	Area present	General characteristics			
	Era	Period	Epoch				Weathering	Soils	Erodibility	Slope stability
DCy	Palaeozoic	Devonian -Carboniferous		Bunya Phyllite	Phyllite, minor arenite, basic volcanics, metamorphosed to greenschist facies	Dominant parent rock for the area south of Brisbane River	Shallow to moderate depth of weathering, often with penetrative weathering along fractures with the development of clay infill	Very shallow	Erosion Resistant	Low batter angles are necessary with shallow cuts in highly weathered rock. Deeper cuts into less weathered rock usually quite stable depending on orientation of foliation and joint sets, otherwise selective support required

E.2 Contaminated land

Table E-2 Notifiable activities in the study area

Lot number(s)	Plan number	Notifiable activity	Risk
6	SP125495	Abrasive blasting	Low
4	RP83778	Abrasive blasting	Low
2	RP151575	Abrasive blasting *** metal treatment or coating *** petroleum product or oil storage	High
1	RP127391	Abrasive blasting *** metal treatment or coating *** petroleum product or oil storage	High
2	RP11928	Abrasive blasting *** metal treatment or coating *** petroleum product or oil storage	High
1-8; 10-13; 15-18; 20-36, 402; 9999	SP179840	Abrasive blasting/ petroleum product or oil storage	High
14	SP213432	Abrasive blasting/ petroleum product or oil storage	High
3	RP175530	Abrasive blasting/ petroleum product or oil storage	High
2	RP56087	Asbestos manufacture or disposal	Low
4	RP807571	Battery manufacture or recycling	Low
1	RP818264	Chemical manufacture or formulation	Low
2	SP195219	Chemical manufacture or formulation	Low
69	RP143065	Chemical manufacture or formulation	Low
2	RP62500	Chemical manufacture or formulation	Low
2	RP210504	Chemical manufacture or formulation	Low
1	RP809894	Chemical manufacture or formulation	Low
11; 12	RP887510	Chemical manufacture or formulation	Low
3	RP818264	Chemical manufacture or formulation	Low
1	SP195219	Chemical manufacture or formulation	Low
1-9, 9999	BUP10462	Chemical storage	Low
10	RP209572	Chemical storage	Low
2	RP224551	Chemical storage	Low
3-21;	GTP100234	Chemical storage	Low
22-43	GTP100834	Chemical storage	Low
9999	GTP3638	Chemical storage	Low
13	RP131288	Chemical storage	Low
37	RP122862	Chemical storage	Low
17	RP118146	Chemical storage	Low
13	GTP102411	Chemical storage	Low
15	GTP105640	Chemical storage	Low
4	RP231662	Chemical storage	Low

Lot number(s)	Plan number	Notifiable activity	Risk
1	RP128787	Chemical storage	Low
10	CP852720	Chemical storage	Low
955	SL11157	Chemical storage *** metal treatment or coating	Low
1074	RP226700	Chemical storage *** metal treatment or coating	Low
6	RP142796	Chemical storage/ petroleum product or oil storage	High
3	SP130727	Chemical storage *** service stations	High
2	RP137861	Chemical storage *** tannery; fellmongery or hide curing	Low
6, 1303	SP195300	Chemical storage/ petroleum product or oil storage	High
1	RP53157	Coal fired power station	High
101	SP102967	Coal fired power station	High
2; 3; 4	SP164685	Coal fired power station/ petroleum product or oil storage	High
7; 9	SP214201	Coal fired power station/ petroleum product or oil storage	High
566	SP214202	Coal fired power station/ petroleum product or oil storage	High
91, 92	RP154503	Coal gas works	High
2	SP214131	Coal gas works	High
5; 6	SP229899	Coal gas works	High
1	RP98701	Coal gas works *** petroleum product or oil storage	High
2	RP141824	Coal gas works *** petroleum product or oil storage	High
2; 3	SP229899	Coal gas works/ petroleum product or oil storage/ railway yards	High
95; 97; 98	SP229911	Coal gas works/ petroleum product or oil storage/ railway yards	High
1	SP174871	Drum reconditioning or recycling	Low
2	RP217957	Drum reconditioning or recycling *** petroleum product or oil storage	Low
49	RP33644	Dry cleaning	Low
1	RP165998	Dry cleaning	Low
2	RP47475	Dry cleaning	Low
1	RP89855	Dry cleaning	Low
19	RP8945	Dry cleaning	Low
1	RP8942	Dry cleaning	Low
3	RP8921	Dry cleaning	Low
2	RP99602	Dry cleaning	Low

Lot number(s)	Plan number	Notifiable activity	Risk
2	RP99091	Dry cleaning	Low
943	SL7485	Dry cleaning	Low
1-11; 9999	SP171219	Dry cleaning	Low
1	RP891412	Dry cleaning	Low
2	SP140708	Dry cleaning/ battery manufacture or recycling/ metal treatment or coating/service stations	High
1-4	RP83497	Foundry operations	Low
3; 4; 30	RP37692	Foundry operations	Low
30	RP174977	Foundry operations	Low
30	RP12574	Foundry operations	Low
2	RP810914	Foundry operations	Low
795	SL5461	Foundry operations	Low
804	SL4698	Foundry operations	Low
13, 14	B31263	Foundry operations	Low
695	SL8440	Foundry operations	Low
4	SP113412	Foundry operations	Low
1-6; 9999	BUP106744	Foundry operations	Low
1	RP115818	Foundry operations *** petroleum product or oil storage	Low
25-29	RP37692	Foundry operations *** scrap yards	Low
6	RP146739	Foundry operations *** scrap yards	Low
4	RP69713	Foundry operations *** scrap yards	Low
20	SP164430	Foundry operations *** scrap yards	Low
1	SP150759	Foundry operations/service stations	High
24	RP813319	Gun; pistol or rifle range	Low
58; 59	SP122233	Hazardous contaminant	High
21	SP122230	Hazardous contaminant	High
58	SP122535	Hazardous contaminant	High
15	SP122221	Hazardous contaminant	High
231	SP117125	Hazardous contaminant	High
223	SL5130	Hazardous contaminant	High
411	RP890875	Hazardous contaminant	High
17	RP209565	Hazardous contaminant	High
2	RP44397	Hazardous contaminant	High
23	SP122212	Hazardous contaminant	High
313	SL5664	Hazardous contaminant	High
4	SP128032	Hazardous contaminant	High
454	SP122217	Hazardous contaminant	High
11	SP156029	Hazardous contaminant	High

Lot number(s)	Plan number	Notifiable activity	Risk
21	SP122213	Hazardous contaminant	High
23	CP827248	Hazardous contaminant	High
32	SP122232	Hazardous contaminant	High
55	SP129998	Hazardous contaminant	High
23	SP122209	Hazardous contaminant	High
51	SP122305	Hazardous contaminant	High
451	SP122304	Hazardous contaminant	High
15	SP128060	Hazardous contaminant	High
22	SP122208	Hazardous contaminant	High
51	SP122226	Hazardous contaminant	High
29	SP126843	Hazardous contaminant	High
31	SP122222	Hazardous contaminant	High
32	SP122223	Hazardous contaminant	High
11	SP122228	Hazardous contaminant	High
12	SP122229	Hazardous contaminant	High
71	SP122224	Hazardous contaminant	High
50	SP122536	Hazardous contaminant	High
72	SP122225	Hazardous contaminant	High
70	SP122450	Hazardous contaminant	High
13	SP122231	Hazardous contaminant	High
550	SL1551	Hazardous contaminant	High
544	SL1514	Hazardous contaminant	High
100	SP116284	Hazardous contaminant	High
1	SP206759	Hazardous contaminant	High
1	SP231749	Hazardous contaminant	High
3; 4	SP172658	Hazardous contaminant	High
2; 23	SP158924	Hazardous contaminant	High
31	SP122214	Hazardous contaminant	High
105, 106	SP155739	Hazardous contaminant	High
1; 2	SP172144	Hazardous contaminant	High
247	RP892591	Hazardous contaminant	High
88	RP856195	Hazardous contaminant	High
1; 2;5; 6	RP18344	Hazardous contaminant	High
100	SP137764	Hazardous contaminant	High
66	RP9348	Hazardous contaminant	High
9999; 1-7	SP208971	Hazardous contaminant	High
1-22; 9999	SP156957	Hazardous contaminant	High
41	SP173430	Hazardous contaminant	High

Lot number(s)	Plan number	Notifiable activity	Risk
42-44	SP173423	Hazardous contaminant	High
204	RP46694	Hazardous contaminant	High
1; 2	RP91289	Hazardous contaminant	High
51	SP122218	Hazardous contaminant	High
2	RP48402	Hazardous contaminant	High
134	RP19036	Hazardous contaminant	High
1	RP59681	Hazardous contaminant	High
23	SP126844	Hazardous contaminant	High
22	SP122245	Hazardous contaminant	High
55; 103	SP214173	Hazardous contaminant	High
14	SP122220	Hazardous contaminant	High
29	RP18712	Hazardous contaminant	High
1	RP71876	Hazardous contaminant	High
39	SP129989	Hazardous contaminant	High
1; 2; 4; 5; 8-11; 16; 17; 20-23; 28; 29; 32; 33; 36; 37	SP179450	Hazardous contaminant	High
27	SP129988	Hazardous contaminant	High
26	SP129987	Hazardous contaminant	High
101	SP129986	Hazardous contaminant	High
1042	SL9242	Hazardous contaminant	High
81	SP122195	Hazardous contaminant	High
340	SP117128	Hazardous contaminant	High
450	SP117130	Hazardous contaminant	High
440	SP117129	Hazardous contaminant	High
382	SL6788	Hazardous contaminant	High
550	SP117131	Hazardous contaminant	High
32	SP122206	Hazardous contaminant	High
4	RP42444	Hazardous contaminant	High
1	RP37927	Hazardous contaminant	High
10	SP122190	Hazardous contaminant	High
102	SP105842	Hazardous contaminant	High
2	RP37367	Hazardous contaminant	High
1	RP107942	Hazardous contaminant	High
8	SP129452	Hazardous contaminant	High
58	RP166692	Hazardous contaminant	High
35; 36	B123422	Hazardous contaminant	High
3; 4	RP109984	Hazardous contaminant	High
1	RP124155	Hazardous contaminant	High

Lot number(s)	Plan number	Notifiable activity	Risk
10	RP185905	Hazardous contaminant	High
22	RP183632	Hazardous contaminant	High
100	RP213606	Hazardous contaminant	High
101	RP810101	Hazardous contaminant	High
19; 21	RP209565	Hazardous contaminant	High
24	SP119273	Hazardous contaminant	High
1; 2	RP12015	Hazardous contaminant	High
1-4	SP195249	Hazardous contaminant	High
2; 3	RP12298	Hazardous contaminant	High
15; 16	SP119265	Hazardous contaminant	High
2	RP806356	Hazardous contaminant	High
17	SP119267	Hazardous contaminant	High
18	SP119268	Hazardous contaminant	High
19; 20	SP119269	Hazardous contaminant	High
51	SP125487	Hazardous contaminant	High
64	CP868661	Hazardous contaminant	High
3	RP12693	Hazardous contaminant	High
2	RP12692	Hazardous contaminant	High
21	SP119270	Hazardous contaminant	High
12	RP12690	Hazardous contaminant	High
1	RP8879	Hazardous contaminant	High
1	RP69973	Hazardous contaminant	High
9999; 1-44	SP154405	Hazardous contaminant	High
15	RP9287	Hazardous contaminant	High
40	RP142283	Hazardous contaminant	High
1	RP173133	Hazardous contaminant	High
20	RP839023	Hazardous contaminant	High
131; 132; 134	RP9287	Hazardous contaminant	High
1	RP120262	Hazardous contaminant	High
2	RP125694	Hazardous contaminant	High
87-91	RP9292	Hazardous contaminant	High
1	RP113080	Hazardous contaminant	High
1-21, 9999	SP179259	Hazardous contaminant	High
9999; 101-110; 301-320; 601-615	SP166476	Hazardous contaminant	High
1-21; 9999	SP189082	Hazardous contaminant	High
9999; 1-12	SP151173	Hazardous contaminant	High
1	RP9150	Hazardous contaminant	High

Lot number(s)	Plan number	Notifiable activity	Risk
901	SP194796	Hazardous contaminant	High
1-39; 9999	SP138328	Hazardous contaminant	High
23	SP119272	Hazardous contaminant	High
44	SP122771	Hazardous contaminant	High
22	SP119271	Hazardous contaminant	High
11	SP128519	Hazardous contaminant	High
3	RP113229	Hazardous contaminant	High
101	SP156029	Hazardous contaminant	High
15; 16	SP158921	Hazardous contaminant	High
1	SP141562	Hazardous contaminant	High
43	CP827250	Hazardous contaminant	High
53; 55; 56	RP80002	Hazardous contaminant	High
2	RP155360	Hazardous contaminant	High
34	RP18497	Hazardous contaminant	High
11	SP125076	Hazardous contaminant	High
1; 2	RP92589	Hazardous contaminant	High
431	SL2529	Hazardous contaminant	High
2	RP158827	Hazardous contaminant	High
21	CP827249	Hazardous contaminant	High
59	CP827251	Hazardous contaminant	High
4-10	RP20320	Hazardous contaminant	High
7	RP61694	Hazardous contaminant	High
5	RP59498	Hazardous contaminant	High
2	RP802636	Hazardous contaminant	High
33	RP26005	Hazardous contaminant	High
45	RP37329	Hazardous contaminant	High
2	RP185695	Hazardous contaminant	High
2; 5; 8; 11	RP42839	Hazardous contaminant	High
2; 4	RP42087	Hazardous contaminant	High
106	SL1027	Hazardous contaminant	High
2; 5; 8; 10; 11	RP42088	Hazardous contaminant	High
103	SP122202	Hazardous contaminant	High
2	RP42836	Hazardous contaminant	High
51	SP122192	Hazardous contaminant	High
107	SP122201	Hazardous contaminant	High
2	RP88740	Hazardous contaminant	High
2	RP38047	Hazardous contaminant	High
61	SP122193	Hazardous contaminant	High

Lot number(s)	Plan number	Notifiable activity	Risk
2	SP122457	Hazardous contaminant	High
21-24	RP37444	Hazardous contaminant	High
2; 8	RP42840	Hazardous contaminant	High
111	SL1027	Hazardous contaminant	High
2; 4	RP42170	Hazardous contaminant	High
112	SL1027	Hazardous contaminant	High
2; 4	RP43705	Hazardous contaminant	High
5; 6	RP42840	Hazardous contaminant	High
2	RP128825	Hazardous contaminant	High
10	RP118123	Hazardous contaminant	High
1	RP162481	Hazardous contaminant	High
2	RP131438	Hazardous contaminant	High
888-890	SL6671	Hazardous contaminant	High
7	RP862959	Hazardous contaminant	High
63	SP195490	Hazardous contaminant	High
9	SP129453	Hazardous contaminant	High
64; 65	SP195490	Hazardous contaminant	High
3	RP131438	Hazardous contaminant	High
4	RP812779	Hazardous contaminant	High
5	SP194544	Hazardous contaminant	High
91	RP40764	Hazardous contaminant	High
99	SP157449	Hazardous contaminant	High
31; 33; 34	RP12286	Hazardous contaminant	High
16; 18	RP12289	Hazardous contaminant	High
195	SP198200	Hazardous contaminant	High
420; 421	SP116165	Hazardous contaminant	High
194	SP198201	Hazardous contaminant	High
30	SP117123	Hazardous contaminant	High
230	SP117124	Hazardous contaminant	High
9	SL807632	Hazardous contaminant	High
5	SP102571	Hazardous contaminant	High
44; 125	SP150319	Hazardous contaminant	High
3; 118	SP150312	Hazardous contaminant	High
1; 2	SP213601	Hazardous contaminant	High
5	RP1418	Hazardous contaminant	High
144	SP150338	Hazardous contaminant	High
143	SP150337	Hazardous contaminant	High
142	SP150336	Hazardous contaminant	High

Lot number(s)	Plan number	Notifiable activity	Risk
141	SP150335	Hazardous contaminant	High
1; 241	SP157139	Hazardous contaminant	High
5; 243	SP157141	Hazardous contaminant	High
11; 244	SP157142	Hazardous contaminant	High
3; 242	SP157140	Hazardous contaminant	High
20	SP138476	Hazardous contaminant	High
21; 22	SP138477	Hazardous contaminant	High
109; 110	SP141922	Hazardous contaminant	High
236	SL1009	Hazardous contaminant	High
41	RP904552	Hazardous contaminant	High
43	SP161089	Hazardous contaminant	High
1	RP142701	Hazardous contaminant	High
22; 23	SP157087	Hazardous contaminant	High
5	RP846619	Hazardous contaminant	High
11	SP129983	Hazardous contaminant	High
10	SP135195	Hazardous contaminant	High
3	RP73488	Hazardous contaminant	High
2	RP94723	Hazardous contaminant	High
7-11; 33- 35; 41; 45; 49; 52-65	SP156530	Hazardous contaminant	High
153	B3137	Hazardous contaminant	High
52-54;	SP117122	Hazardous contaminant	High
31	SP117120	Hazardous contaminant	High
41	SP117121	Hazardous contaminant	High
2	RP96245	Hazardous contaminant	High
1	RP60900	Hazardous contaminant	High
1	RP175247	Hazardous contaminant	High
2	RP219864	Hazardous contaminant	High
21	SP129984	Hazardous contaminant	High
5-9	SP113413	Hazardous contaminant	High
12	SP135186	Hazardous contaminant	High
25	SP129985	Hazardous contaminant	High
484	SL4553	Hazardous contaminant	High
485	SP192466	Hazardous contaminant	High
487	SP196776	Hazardous contaminant	High
1	RP59251	Hazardous contaminant	High
34	RP9694	Hazardous contaminant	High
11; 12	RP9717	Hazardous contaminant	High

Lot number(s)	Plan number	Notifiable activity	Risk
33	RP9712	Hazardous contaminant	High
2	RP9711	Hazardous contaminant	High
17	B31671	Hazardous contaminant	High
3-5	RP42010	Hazardous contaminant	High
1; 3	SP190810	Hazardous contaminant	High
252	SL1589	Hazardous contaminant	High
2	RP59612	Hazardous contaminant	High
1	RP10753	Hazardous contaminant	High
1; 2	RP41899	Hazardous contaminant	High
2	RP47266	Hazardous contaminant	High
250; 253	SL1413	Hazardous contaminant	High
6	RP52453	Hazardous contaminant	High
256-262; 834-840	SP192733	Hazardous contaminant	High
2	RP53161	Hazardous contaminant	High
4	RP52454	Hazardous contaminant	High
4	RP52451	Hazardous contaminant	High
4	RP10798	Hazardous contaminant	High
7	RP51550	Hazardous contaminant	High
1; 2	RP52455	Hazardous contaminant	High
102	SP144638	Hazardous contaminant	High
101; 103	SP144639	Hazardous contaminant	High
824; 825; 6; 7	SP192735	Hazardous contaminant	High
2	RP98491	Hazardous contaminant	High
481	SP196765	Hazardous contaminant	High
452; 455; 456	SL3473	Hazardous contaminant	High
474	SL12086	Hazardous contaminant	High
5	SP123915	Hazardous contaminant	High
1	SP179251	Hazardous contaminant	High
22	SP129984	Landfill/ hazardous contaminant	High
4	SP211311	Hazardous contaminant/ printing	High
4	B32002	Herbicide or pesticide manufacture	High
1; 2	SP128763	Landfill	High
1	RP856377	Landfill	High
1	SP133237	Landfill	High
3	SP143554	Landfill	High
4	SP163909	Landfill	High
1	RP19518	Landfill	High
2	RP165926	Landfill	High

Lot number(s)	Plan number	Notifiable activity	Risk
110	SL5464	Landfill	High
1	RP165923	Landfill	High
409	SP172161	Landfill	High
600	SP198679	Landfill	High
98	SP220100	Landfill	High
1182	SL9293	Landfill	High
400	SL8424	Landfill	High
2	RP209359	Landfill	High
2	RP149808	Landfill	High
4	RP109833	Landfill	High
638	SP102972	Landfill	High
23	RP843976	Landfill	High
4	SP122801	Landfill	High
9999	SP206768	Landfill	High
12-28	SP206774	Landfill	High
9999; 101-128	SP206777	Landfill	High
33	SL4794	Landfill	High
36	SL5077	Landfill	High
112	RP69740	Landfill	High
406	RP41767	Landfill	High
29-35	RP25132	Landfill	High
33-43; 45-50; 53; 54	RP34017	Landfill	High
35	RP80407	Landfill	High
8; 9	SP110564	Landfill	High
50	SP124003	Landfill	High
1160	SP108456	Landfill	High
902	SP101178	Landfill	High
27; 26; 25	RP33557	Landfill	High
564	SL4946	Landfill	High
18-23	RP12581	Landfill	High
36-55	RP12579	Landfill	High
70-81	RP12577	Landfill	High
18-28; 34; 35	RP12579	Landfill	High
96-99; 108-112	RP12615	Landfill	High
9; 10; 140; 18-24	RP33557	Landfill	High
1; 2	RP33562	Landfill	High
1	RP33563	Landfill	High

Lot number(s)	Plan number	Notifiable activity	Risk
2; 3; 4	RP33564	Landfill	High
262-266	RP20201	Landfill	High
1173	SL7552	Landfill	High
11	RP53661	Landfill	High
228-243	RP23306	Landfill	High
2	RP89283	Landfill	High
59; 63; 65; 68	RP18863	Landfill	High
1	RP91834	Landfill	High
21	RP100093	Landfill	High
2; 60	SP190118	Landfill	High
1259	SL11529	Landfill	High
449-461	RP12942	Landfill	High
401-405	RP37417	Landfill	High
1	RP63996	Landfill	High
393-396; 383-392	RP37417	Landfill	High
442-448	RP12942	Landfill	High
824	SL5760	Landfill	High
394-407	RP12933	Landfill	High
241	RP12918	Landfill	High
7	RP149940	Landfill	High
11	SP115672	Landfill	High
114; 115	SP150301	Landfill	High
105-108	SP150299	Landfill	High
100	SP150295	Landfill	High
101; 102	SP150296	Landfill	High
16	SP115673	Landfill	High
1-5	RP40800	Landfill	High
2	RP85137	Landfill	High
15-18	RP37244	Landfill	High
6	RP37207	Landfill	High
1-3	RP903273	Landfill	High
664; 665	SL2496	Landfill	High
496	S312116	Landfill	High
1, 2	RP806359	Landfill	High
1	RP230277	Landfill	High
38-41	RP37819	Landfill	High
20-22; 29-31	RP37818	Landfill	High
32	SL5453	Landfill	High

Lot number(s)	Plan number	Notifiable activity	Risk
1-5; 44-58; 119	RP37192	Landfill	High
2	RP41240	Landfill	High
112	RP59568	Landfill	High
113-125	RP37247	Landfill	High
126	RP43084	Landfill	High
54	RP37778	Landfill	High
506	SL4101	Landfill	High
14; 15	SP115673	Landfill	High
327-348	RP37433	Landfill	High
313	RP40378	Landfill	High
2-9	RP47640	Landfill	High
1	CP818278	Landfill	High
1; 2	RP886522	Landfill	High
21	RP67436	Landfill	High
1	RP121083	Landfill	High
2	RP131699	Landfill	High
1	RP69668	Landfill	High
1	RP95796	Landfill	High
22	RP813853	Landfill	High
93	RP37194	Landfill	High
2	RP146853	Landfill	High
4	RP146852	Landfill	High
1; 6	SP163313	Landfill	High
12	SP147396	Landfill	High
13	SP168000	Landfill	High
1	RP67151	Landfill	High
37	B118246	Landfill	High
1	RP1274	Landfill	High
2; 3; 4; 5	RP1272	Landfill	High
24	B118246	Landfill	High
21	RP79854	Landfill	High
1	RP64059	Landfill	High
3	RP64059	Landfill	High
1	RP1271	Landfill	High
1	RP1272	Landfill	High
2	SL810821	Landfill	High
5; 622	SP231895	Landfill	High
17	RP79663	Landfill	High

Lot number(s)	Plan number	Notifiable activity	Risk
23	RP101182	Landfill	High
19-22; 42-50	RP13352	Landfill	High
1	CP882322	Landfill	High
1	CP852759	Landfill	High
3	CP868002	Landfill	High
105-110; 70-75	RP13352	Landfill	High
1-9	RP108123	Landfill	High
482	SL10113	Landfill	High
4	RP133760	Landfill	High
453	SL1946	Landfill	High
206; 300	RP12678	Landfill	High
302-306	RP12682	Landfill	High
2	RP12680	Landfill	High
734	SL12761	Landfill	High
100; 102; 103; 106	SP142511	Landfill	High
9	RP52058	Landfill	High
13	RP9287	Landfill	High
12	RP9287	Landfill	High
2	RP52058	Landfill	High
1; 2; 3	SP139861	Landfill	High
73-105; 261-268; 283-285; 333; 337-353	RP12500	Landfill	High
1	RP87469	Landfill	High
356-366	RP12499	Landfill	High
286; 287; 288	RP12501	Landfill	High
1	RP80258	Landfill	High
401; 402; 431-451	RP12678	Landfill	High
1	RP87470	Landfill	High
438	SL3062	Landfill	High
560	SL4975	Landfill	High
376; 377	SP115291	Landfill	High
2	SP171342	Landfill	High
48-55	RP20529	Landfill	High
1196	SL8483	Landfill	High
54	RP20070	Landfill	High
7	RP72098	Landfill	High
2	RP114914	Landfill	High
20, 21	RP56334	Landfill	High

Lot number(s)	Plan number	Notifiable activity	Risk
3	RP58285	Landfill	High
73	RP18482	Landfill	High
532-557	RP18524	Landfill	High
989	SL3468	Landfill	High
436	SP135355	Landfill	High
437	SP135374	Landfill	High
2	RP66835	Landfill	High
6; 7; 8	SP163909	Landfill	High
434	SP135389	Landfill	High
3	RP71388	Landfill	High
29	RP64390	Landfill	High
10-14	RP71388	Landfill	High
147	RP83323	Landfill	High
4	RP56044	Landfill	High
149	RP83325	Landfill	High
3-5	RP123172	Landfill	High
48-57; 127-138; 146-152; 155-158	RP26005	Landfill	High
1	RP56537	Landfill	High
93	RP56326	Landfill	High
1; 2	RP69590	Landfill	High
34	RP17303	Landfill	High
1	RP90610	Landfill	High
7	RP37860	Landfill	High
1	SL2069	Landfill	High
12	SP122191	Landfill	High
6	SP129451	Landfill	High
1033	SL8077	Landfill	High
68	RP73735	Landfill	High
4	RP169745	Landfill	High
627	SL11586	Landfill	High
367	SL5786	Landfill	High
1	RP129582	Landfill	High
1; 2	SP137545	Landfill	High
21-25; 27-32	RP23316	Landfill	High
1	RP129611	Landfill	High
238	SL9045	Landfill	High
38	RP12123	Landfill	High

Lot number(s)	Plan number	Notifiable activity	Risk
40	SL7930	Landfill	High
39	RP12123	Landfill	High
23	SP150320	Landfill	High
21	SP150321	Landfill	High
19	SP150322	Landfill	High
17	SP150323	Landfill	High
15	SP150324	Landfill	High
13	SP150325	Landfill	High
11	SP150326	Landfill	High
9	SP150327	Landfill	High
7	SP150328	Landfill	High
5	SP150329	Landfill	High
3	SP150330	Landfill	High
1	SP150331	Landfill	High
126	SP150320	Landfill	High
127	SP150321	Landfill	High
128	SP150322	Landfill	High
129	SP150323	Landfill	High
130	SP150324	Landfill	High
131	SP150325	Landfill	High
132	SP150326	Landfill	High
133	SP150327	Landfill	High
134	SP150328	Landfill	High
135	SP150329	Landfill	High
136	SP150330	Landfill	High
137	SP150331	Landfill	High
581	RP227070	Landfill	High
354	RP898660	Landfill	High
356; 357	SP161706	Landfill	High
556	SP133445	Landfill	High
21; 22	B118220	Landfill	High
3; 5	RP69951	Landfill	High
2	RP58871	Landfill/ hazardous contaminant	High
22-25; 60-62; 64; 66; 67	RP18863	Landfill/ hazardous contaminant	High
3	RP100093	Landfill/hazardous contaminant	High
703	RP198160	Landfill *** service stations	High
3	RP806359	Landfill *** waste storage; treatment or disposal	High

Lot number(s)	Plan number	Notifiable activity	Risk
153; 154	RP26005	Landfill/ petroleum product or oil storage	High
9999	SP206774	Landfill/ petroleum product or oil storage	High
9999	SP206769	Landfill/ petroleum product or oil storage	High
9999; 201-254	SP206778	Landfill/ petroleum product or oil storage	High
102; 800	SP219000	Landfill/ petroleum product or oil storage	High
1	SP163311	Landfill/wood treatment and preservation/ petroleum product or oil storage	High
4	SP192423	Livestock dip or spray race	Low
7; 8	SP192424	Livestock dip or spray race	Low
20	RP208870	Metal treatment or coating	Low
4	SL807309	Metal treatment or coating	Low
1-53	BUP101701	Metal treatment or coating	Low
1-18	SP141277	Metal treatment or coating	Low
9999	BUP101701	Metal treatment or coating	Low
9999	SP141277	Metal treatment or coating	Low
2	RP71250	Metal treatment or coating	Low
1; 2	RP201663	Metal treatment or coating	Low
9999; 1-4	SP225438	Metal treatment or coating	Low
1	SL12016	Metal treatment or coating	Low
1	RP115554	Metal treatment or coating	Low
30	RP18381	Metal treatment or coating	Low
1; 100	SP200283	Metal treatment or coating	Low
80; 84	RP37480	Metal treatment or coating	Low
1	RP142172	Metal treatment or coating	Low
72; 73	RP11846	Metal treatment or coating	Low
70; 71	RP11857	Metal treatment or coating	Low
12; 13	RP11840	Metal treatment or coating	Low
13-27	RP12739	Metal treatment or coating	Low
4	RP43308	Metal treatment or coating	Low
1-146	BUP12743	Metal treatment or coating	Low
1-12; 15-60; 62-98; 100-106; 108; 9999	BUP103570	Metal treatment or coating	Low
110-112	BUP105911	Metal treatment or coating	Low
14; 109	SP191307	Metal treatment or coating	Low
9999; 1-12; 14-68; 70-79; 82-89; 94; 95; 98; 100-103; 105-108; 110	BUP106839	Metal treatment or coating	Low
9999	BUP12743	Metal treatment or coating	Low
111-114	BUP106840	Metal treatment or coating	Low

Lot number(s)	Plan number	Notifiable activity	Risk
13; 69; 109	SP110537	Metal treatment or coating	Low
90	SP208142	Metal treatment or coating	Low
117	RP86671	Metal treatment or coating	Low
1; 2	RP72044	Metal treatment or coating	Low
796	SL5394	Metal treatment or coating	Low
3	RP112650	Metal treatment or coating	Low
3	SP138729	Metal treatment or coating	Low
831; 832	SP198153	Metal treatment or coating	Low
2	RP115052	Metal treatment or coating	Low
9999	SP121720	Metal treatment or coating	Low
17	SP204992	Metal treatment or coating *** hazardous contaminant	High
1	RP852093	Metal treatment or coating *** petroleum product or oil storage	Low
3	RP158019	Metal treatment or coating *** wood treatment and preservation	Low
18; 902	SP204992	Metal treatment or coating/ hazardous contaminant	High
3; 4	SP121757	Metal treatment or coating/ hazardous contaminant	High
1; 245	SP157143	Metal treatment or coating/ hazardous contaminant	High
9; 246	SP157144	Metal treatment or coating/ hazardous contaminant	High
145	SP150339	Metal treatment or coating/ hazardous contaminant	High
146	SP150340	Metal treatment or coating/ hazardous contaminant	High
42	SP161089	Metal treatment or coating/ hazardous contaminant	High
3	RP111956	Paint manufacture or formulation	Low
4	RP111956	Paint manufacture or formulation	Low
2	RP89574	Paint manufacture or formulation	Low
1	RP73748	Paint manufacture or formulation	Low
3	RP66926	Paint manufacture or formulation	Low
1	RP223672	Paint manufacture or formulation	Low
1	RP183641	Paint manufacture or formulation	Low
350	SL5279	Pest control	Low
297; 332	SL12778	Pest control	Low
1	RP107107	Pest control	Low
1	RP222051	Pest control	Low

Lot number(s)	Plan number	Notifiable activity	Risk
55	RP37789	Pest control	Low
14	BUP10907	Pest control	Low
1	RP82675	Pest control	Low
39-41	RP37872	Pest control	Low
8	RP74928	Pest control	Low
35; 36	RP78341	Pest control	Low
1	RP890175	Petroleum product or oil storage	High
1; 2	SP137521	Petroleum product or oil storage	High
5	SP197874	Petroleum product or oil storage	High
9999; 1-10; 13-16; 22-29; 32-45	SP100037	Petroleum product or oil storage	High
1; 2	SP190801	Petroleum product or oil storage	High
1	SP112972	Petroleum product or oil storage	High
2; 3	SP118578	Petroleum product or oil storage	High
1	RP33570	Petroleum product or oil storage	High
1; 60	RP20344	Petroleum product or oil storage	High
660	RP892974	Petroleum product or oil storage	High
20	SP198740	Petroleum product or oil storage	High
325	SP138356	Petroleum product or oil storage	High
544	SP119375	Petroleum product or oil storage	High
2	SP117789	Petroleum product or oil storage	High
500	SL5693	Petroleum product or oil storage	High
1	RP18456	Petroleum product or oil storage	High
343	B3801	Petroleum product or oil storage	High
2	SP211404	Petroleum product or oil storage	High
3	RP172219	Petroleum product or oil storage	High
2	RP109338	Petroleum product or oil storage	High
2; 4; 5	RP191788	Petroleum product or oil storage	High
11	RP190507	Petroleum product or oil storage	High
20; 21	RP190506	Petroleum product or oil storage	High
19	RP37409	Petroleum product or oil storage	High
2	GTP1597	Petroleum product or oil storage	High
10	RP884180	Petroleum product or oil storage	High
5; 6	RP138225	Petroleum product or oil storage	High
45; 21; 24	RP138226	Petroleum product or oil storage	High
6	RP205265	Petroleum product or oil storage	High
4	RP229795	Petroleum product or oil storage	High
16	RP231705	Petroleum product or oil storage	High

Lot number(s)	Plan number	Notifiable activity	Risk
1	SP142830	Petroleum product or oil storage	High
1	SL7195	Petroleum product or oil storage	High
2	RP102144	Petroleum product or oil storage	High
5	RP82789	Petroleum product or oil storage	High
10	SP109528	Petroleum product or oil storage	High
2	SP124360	Petroleum product or oil storage	High
97; 98	RP34070	Petroleum product or oil storage	High
1	RP202924	Petroleum product or oil storage	High
6	RP866929	Petroleum product or oil storage	High
674	SL9942	Petroleum product or oil storage	High
916	SL5057	Petroleum product or oil storage	High
4	RP152644	Petroleum product or oil storage	High
1; 2	RP155393	Petroleum product or oil storage	High
37	RP55484	Petroleum product or oil storage	High
26; 28- 31	RP18356	Petroleum product or oil storage	High
27	RP84739	Petroleum product or oil storage	High
1	RP103120	Petroleum product or oil storage	High
33; 34	RP33460	Petroleum product or oil storage	High
1	RP163759	Petroleum product or oil storage	High
37; 38	RP12614	Petroleum product or oil storage	High
81	RP87060	Petroleum product or oil storage	High
208	RP12639	Petroleum product or oil storage	High
1	RP122191	Petroleum product or oil storage	High
211	RP12639	Petroleum product or oil storage	High
200	RP856321	Petroleum product or oil storage	High
1	AP5136	Petroleum product or oil storage	High
207	RP12639	Petroleum product or oil storage	High
192-194	SP201080	Petroleum product or oil storage	High
10	RP202493	Petroleum product or oil storage	High
26	RP18424	Petroleum product or oil storage	High
1	RP174608	Petroleum product or oil storage	High
1226	SL8896	Petroleum product or oil storage	High
3	RP48533	Petroleum product or oil storage	High
66; 67	RP18985	Petroleum product or oil storage	High
141	RP18577	Petroleum product or oil storage	High
1	RP68192	Petroleum product or oil storage	High
6	SP154960	Petroleum product or oil storage	High
19	RP170266	Petroleum product or oil storage	High

Lot number(s)	Plan number	Notifiable activity	Risk
5; 6	SP128769	Petroleum product or oil storage	High
1	RP153902	Petroleum product or oil storage	High
1	RP124690	Petroleum product or oil storage	High
15	RP18381	Petroleum product or oil storage	High
1	RP131196	Petroleum product or oil storage	High
11; 19-22; 24	RP18381	Petroleum product or oil storage	High
57	RP19034	Petroleum product or oil storage	High
1	RP66492	Petroleum product or oil storage	High
58	RP19034	Petroleum product or oil storage	High
1241	SL8836	Petroleum product or oil storage	High
1	RP127715	Petroleum product or oil storage	High
2	RP801651	Petroleum product or oil storage	High
10	RP209688	Petroleum product or oil storage	High
1	SP213410	Petroleum product or oil storage	High
6; 13; 25; 18; 30	SP179450	Petroleum product or oil storage	High
3	RP886311	Petroleum product or oil storage	High
15	SP215241	Petroleum product or oil storage	High
9999; 1-20	SP215250	Petroleum product or oil storage	High
101	RP908959	Petroleum product or oil storage	High
1043	SL7078	Petroleum product or oil storage	High
5	SL12786	Petroleum product or oil storage	High
11; 12	RP63738	Petroleum product or oil storage	High
4	RP161814	Petroleum product or oil storage	High
6	RP55971	Petroleum product or oil storage	High
1	RP100546	Petroleum product or oil storage	High
2	RP13006	Petroleum product or oil storage	High
702	SP183568	Petroleum product or oil storage	High
108	RP46047	Petroleum product or oil storage	High
5	RP880452	Petroleum product or oil storage	High
2	RP71958	Petroleum product or oil storage	High
1	RP179845	Petroleum product or oil storage	High
1	RP217835	Petroleum product or oil storage	High
2	RP210697	Petroleum product or oil storage	High
2	RP37700	Petroleum product or oil storage	High
62	RP138194	Petroleum product or oil storage	High
1	RP160842	Petroleum product or oil storage	High
25	RP854695	Petroleum product or oil storage	High
2	RP107577	Petroleum product or oil storage	High

Lot number(s)	Plan number	Notifiable activity	Risk
3; 4	RP153886	Petroleum product or oil storage	High
5	RP228083	Petroleum product or oil storage	High
2; 101	SP172149	Petroleum product or oil storage	High
20; 21	SP172151	Petroleum product or oil storage	High
2; 200; 201	SP200283	Petroleum product or oil storage	High
1	RP37459	Petroleum product or oil storage	High
1; 2	RP94700	Petroleum product or oil storage	High
935	SL7479	Petroleum product or oil storage	High
2	RP121413	Petroleum product or oil storage	High
49	RP150781	Petroleum product or oil storage	High
17	RP211657	Petroleum product or oil storage	High
18	RP220252	Petroleum product or oil storage	High
10; 11	RP892147	Petroleum product or oil storage	High
1	RP112630	Petroleum product or oil storage	High
3	RP207252	Petroleum product or oil storage	High
10	RP209552	Petroleum product or oil storage	High
8	RP222829	Petroleum product or oil storage	High
6	RP891735	Petroleum product or oil storage	High
2-4	RP106106	Petroleum product or oil storage	High
1	RP37619	Petroleum product or oil storage	High
2	SP137679	Petroleum product or oil storage	High
37; 38	SP211345	Petroleum product or oil storage	High
4	SP161332	Petroleum product or oil storage	High
1	SP203733	Petroleum product or oil storage	High
1249	SL570	Petroleum product or oil storage	High
1	RP848333	Petroleum product or oil storage	High
5	RP809858	Petroleum product or oil storage	High
1	RP884179	Petroleum product or oil storage	High
1	RP70669	Petroleum product or oil storage	High
1	RP170304	Petroleum product or oil storage	High
1	RP99990	Petroleum product or oil storage	High
5	RP68189	Petroleum product or oil storage	High
201	RP37531	Petroleum product or oil storage	High
200	RP37531	Petroleum product or oil storage	High
1	RP806390	Petroleum product or oil storage	High
3	RP121339	Petroleum product or oil storage	High
1; 2	SP202335	Petroleum product or oil storage	High
22	RP182994	Petroleum product or oil storage	High

Lot number(s)	Plan number	Notifiable activity	Risk
10	RP136779	Petroleum product or oil storage	High
835	SP143376	Petroleum product or oil storage	High
10	RP205644	Petroleum product or oil storage	High
1	RP193931	Petroleum product or oil storage	High
44	RP122862	Petroleum product or oil storage	High
3	RP209542	Petroleum product or oil storage	High
1	RP899480	Petroleum product or oil storage	High
1	RP181959	Petroleum product or oil storage	High
3	SP102562	Petroleum product or oil storage	High
41	RP218420	Petroleum product or oil storage	High
2	RP157971	Petroleum product or oil storage	High
9	RP196746	Petroleum product or oil storage	High
2	SL12006	Petroleum product or oil storage	High
40	RP817615	Petroleum product or oil storage	High
6	B118221	Petroleum product or oil storage	High
1	RP123283	Petroleum product or oil storage	High
1	RP108374	Petroleum product or oil storage	High
2	SP172708	Petroleum product or oil storage	High
10	RP128822	Petroleum product or oil storage	High
14	SL11335	Petroleum product or oil storage	High
23	RP146830	Petroleum product or oil storage	High
1	RP172274	Petroleum product or oil storage	High
13	B32219	Petroleum product or oil storage	High
3	RP46686	Petroleum product or oil storage	High
12	RP128676	Petroleum product or oil storage	High
5	RP40997	Petroleum product or oil storage	High
101	SP102966	Petroleum product or oil storage	High
1; 4	SP157241	Petroleum product or oil storage	High
20; 21	SP198665	Petroleum product or oil storage	High
31	RP173814	Petroleum product or oil storage	High
4	RP173778	Petroleum product or oil storage	High
34	RP146754	Petroleum product or oil storage	High
111; 123	SP208982	Petroleum product or oil storage	High
2; 3; 6	SP100562	Petroleum product or oil storage	High
4; 28	SP207222	Petroleum product or oil storage	High
496	SL12309	Petroleum product or oil storage	High
2	RP43451	Petroleum product or oil storage	High
2	RP124155	Petroleum product or oil storage	High

Lot number(s)	Plan number	Notifiable activity	Risk
1	RP122127	Petroleum product or oil storage	High
3	RP211213	Petroleum product or oil storage	High
5	SP115364	Petroleum product or oil storage	High
1	AP3495	Petroleum product or oil storage	High
1; 2	SP140773	Petroleum product or oil storage	High
4	SP143673	Petroleum product or oil storage	High
6-11	SP165989	Petroleum product or oil storage	High
12	RP125034	Petroleum product or oil storage	High
5	RP195923	Petroleum product or oil storage	High
7	B118227	Petroleum product or oil storage	High
21	RP133052	Petroleum product or oil storage	High
13-15	RP46148	Petroleum product or oil storage	High
1	RP142803	Petroleum product or oil storage	High
5	RP200298	Petroleum product or oil storage	High
16	RP229111	Petroleum product or oil storage	High
2	RP905881	Petroleum product or oil storage	High
1	RP905881	Petroleum product or oil storage	High
1	SP182811	Petroleum product or oil storage	High
9999; 3-11	SP156453	Petroleum product or oil storage	High
2	SP167985	Petroleum product or oil storage	High
1	SP182833	Petroleum product or oil storage	High
12	SP182844	Petroleum product or oil storage	High
9999	SP111240	Petroleum product or oil storage	High
6	RP43033	Petroleum product or oil storage	High
1; 3	RP88472	Petroleum product or oil storage	High
26	RP137725	Petroleum product or oil storage	High
2	RP88472	Petroleum product or oil storage	High
2	RP67151	Petroleum product or oil storage	High
27	RP204754	Petroleum product or oil storage	High
24; 25	RP216272	Petroleum product or oil storage	High
23	RP223377	Petroleum product or oil storage	High
2	RP152576	Petroleum product or oil storage	High
49	RP231249	Petroleum product or oil storage	High
7	RP804537	Petroleum product or oil storage	High
15	RP170268	Petroleum product or oil storage	High
2	RP211151	Petroleum product or oil storage	High
6	RP221165	Petroleum product or oil storage	High
73; 74	RP46061	Petroleum product or oil storage	High

Lot number(s)	Plan number	Notifiable activity	Risk
100; 101	SP218954	Petroleum product or oil storage	High
5	RP127273	Petroleum product or oil storage	High
2	RP231259	Petroleum product or oil storage	High
13	RP10457	Petroleum product or oil storage	High
1-4; 6; 7	RP41005	Petroleum product or oil storage	High
1	RP140930	Petroleum product or oil storage	High
4; 5; 19; 18	RP9713	Petroleum product or oil storage	High
1	RP203299	Petroleum product or oil storage	High
4	RP221710	Petroleum product or oil storage	High
2	SP134044	Petroleum product or oil storage	High
1	RP188052	Petroleum product or oil storage	High
1	RP626	Petroleum product or oil storage	High
506	B118215	Petroleum product or oil storage	High
1	RP189266	Petroleum product or oil storage	High
3	RP209571	Petroleum product or oil storage	High
31	RP178577	Petroleum product or oil storage	High
1	RP119919	Petroleum product or oil storage	High
1	RP948	Petroleum product or oil storage	High
32	RP178652	Petroleum product or oil storage	High
30	RP145982	Petroleum product or oil storage	High
5	RP200175	Petroleum product or oil storage	High
15	RP137816	Petroleum product or oil storage	High
23	SL12397	Petroleum product or oil storage	High
26	B118246	Petroleum product or oil storage	High
1	RP94587	Petroleum product or oil storage	High
41	RP12669	Petroleum product or oil storage	High
22; 23	RP11809	Petroleum product or oil storage	High
1	RP11810	Petroleum product or oil storage	High
2; 42	SP107611	Petroleum product or oil storage	High
24; 124	SP184402	Petroleum product or oil storage	High
1	RP805860	Petroleum product or oil storage	High
1	RP125561	Petroleum product or oil storage	High
1-9; 100; 9999	SP176295	Petroleum product or oil storage	High
8	CP900184	Petroleum product or oil storage	High
1; 2	RP75018	Petroleum product or oil storage	High
76; 77	RP12775	Petroleum product or oil storage	High
9; 8; 114; 112; 111	RP12739	Petroleum product or oil storage	High
11	RP864085	Petroleum product or oil storage	High

Lot number(s)	Plan number	Notifiable activity	Risk
4	RP69511	Petroleum product or oil storage	High
3	RP89855	Petroleum product or oil storage	High
12	RP152616	Petroleum product or oil storage	High
73	RP11335	Petroleum product or oil storage	High
2	RP221700	Petroleum product or oil storage	High
2	RP69973	Petroleum product or oil storage	High
1	RP69972	Petroleum product or oil storage	High
1; 2	RP100687	Petroleum product or oil storage	High
1	SP133250	Petroleum product or oil storage	High
4	SP139861	Petroleum product or oil storage	High
101; 103	RP9281	Petroleum product or oil storage	High
1	RP131423	Petroleum product or oil storage	High
5	SP188317	Petroleum product or oil storage	High
1-63; 9999	SP118989	Petroleum product or oil storage	High
3	SP103871	Petroleum product or oil storage	High
1-106; 9999	BUP10415	Petroleum product or oil storage	High
1-5; 7-14; 17-47; 9999	BUP10414	Petroleum product or oil storage	High
16	SP133286	Petroleum product or oil storage	High
2	RP56171	Petroleum product or oil storage	High
3	RP12509	Petroleum product or oil storage	High
25	RP101422	Petroleum product or oil storage	High
7	RP117955	Petroleum product or oil storage	High
1	SP151192	Petroleum product or oil storage	High
99	SP214235	Petroleum product or oil storage	High
4	SP229899	Petroleum product or oil storage	High
96	SP229911	Petroleum product or oil storage	High
6	RP166426	Petroleum product or oil storage	High
13	SP158918	Petroleum product or oil storage	High
14	SP158920	Petroleum product or oil storage	High
652	RP98205	Petroleum product or oil storage	High
1; 2	SP163909	Petroleum product or oil storage	High
4	RP18962	Petroleum product or oil storage	High
7	RP223902	Petroleum product or oil storage	High
67	RP80003	Petroleum product or oil storage	High
68	RP18524	Petroleum product or oil storage	High
1; 11	SP125074	Petroleum product or oil storage	High
5	RP152604	Petroleum product or oil storage	High

Lot number(s)	Plan number	Notifiable activity	Risk
2; 12	SP193904	Petroleum product or oil storage	High
449	SL4242	Petroleum product or oil storage	High
1	RP152626	Petroleum product or oil storage	High
161-164	RP19964	Petroleum product or oil storage	High
880	M333052	Petroleum product or oil storage	High
2	RP219397	Petroleum product or oil storage	High
700	SL6074	Petroleum product or oil storage	High
18	SL6074	Petroleum product or oil storage	High
17	RP63845	Petroleum product or oil storage	High
1; 17-25; 45-83	RP26078	Petroleum product or oil storage	High
607	SL564	Petroleum product or oil storage	High
3	RP47807	Petroleum product or oil storage	High
16	RP26086	Petroleum product or oil storage	High
21-28	RP26080	Petroleum product or oil storage	High
1	RP129140	Petroleum product or oil storage	High
1	RP891922	Petroleum product or oil storage	High
1	RP185614	Petroleum product or oil storage	High
5	RP213436	Petroleum product or oil storage	High
20; 21	SP102856	Petroleum product or oil storage	High
1	RP93976	Petroleum product or oil storage	High
41	RP221629	Petroleum product or oil storage	High
1	RP99085	Petroleum product or oil storage	High
1	RP97188	Petroleum product or oil storage	High
1	RP125351	Petroleum product or oil storage	High
3-6	RP43700	Petroleum product or oil storage	High
16; 17	RP43701	Petroleum product or oil storage	High
7; 8	RP71666	Petroleum product or oil storage	High
10	RP110541	Petroleum product or oil storage	High
5	SL11589	Petroleum product or oil storage	High
1	SL11598	Petroleum product or oil storage	High
3	RP191667	Petroleum product or oil storage	High
2	RP112585	Petroleum product or oil storage	High
1; 11	SL7106	Petroleum product or oil storage	High
2	SL7103	Petroleum product or oil storage	High
1	SP155710	Petroleum product or oil storage	High
2	RP86648	Petroleum product or oil storage	High
1	RP58549	Petroleum product or oil storage	High
12	RP103341	Petroleum product or oil storage	High

Lot number(s)	Plan number	Notifiable activity	Risk
1	RP189950	Petroleum product or oil storage	High
1-3, 9999	GTP102563	Petroleum product or oil storage	High
5; 7	GTP105759	Petroleum product or oil storage	High
10	SP155727	Petroleum product or oil storage	High
810	SL5574	Petroleum product or oil storage	High
637	SL4316	Petroleum product or oil storage	High
702	RP851249	Petroleum product or oil storage	High
1; 2	RP909225	Petroleum product or oil storage	High
1; 2	SP203363	Petroleum product or oil storage	High
5	RP178629	Petroleum product or oil storage	High
3	RP179192	Petroleum product or oil storage	High
40	RP122862	Petroleum product or oil storage	High
1; 2	RP138764	Petroleum product or oil storage	High
65	RP119967	Petroleum product or oil storage	High
1	RP172181	Petroleum product or oil storage	High
32	RP137896	Petroleum product or oil storage	High
2	RP94559	Petroleum product or oil storage	High
88	RP219257	Petroleum product or oil storage	High
4	B32204	Petroleum product or oil storage	High
9	RP214636	Petroleum product or oil storage	High
21	SP216137	Petroleum product or oil storage	High
1	RP194045	Petroleum product or oil storage	High
6	RP143577	Petroleum product or oil storage	High
9	RP74928	Petroleum product or oil storage	High
38-40	RP78341	Petroleum product or oil storage	High
2	RP143727	Petroleum product or oil storage	High
17	RP74928	Petroleum product or oil storage	High
1	RP88693	Petroleum product or oil storage	High
1	RP158190	Petroleum product or oil storage	High
951	RP220248	Petroleum product or oil storage	High
23	RP813045	Petroleum product or oil storage	High
1	RP84770	Petroleum product or oil storage	High
2	RP136992	Petroleum product or oil storage	High
1; 9999	BUP102877	Petroleum product or oil storage	High
1	RP85166	Petroleum product or oil storage	High
4	RP809718	Petroleum product or oil storage	High
3	RP136755	Petroleum product or oil storage	High
14	RP130779	Petroleum product or oil storage	High

Lot number(s)	Plan number	Notifiable activity	Risk
31	RP852250	Petroleum product or oil storage	High
1	RP74591	Petroleum product or oil storage	High
24	RP100451	Petroleum product or oil storage	High
335	SL3987	Petroleum product or oil storage	High
2	RP212214	Petroleum product or oil storage	High
10; 11	RP10935	Petroleum product or oil storage	High
1	RP201368	Petroleum product or oil storage	High
5	RP801844	Petroleum product or oil storage	High
7	RP11640	Petroleum product or oil storage	High
106; 107	SP141919	Petroleum product or oil storage	High
1	RP856333	Petroleum product or oil storage	High
9; 13	RP11195	Petroleum product or oil storage	High
20	RP892634	Petroleum product or oil storage	High
1	RP147016	Petroleum product or oil storage	High
1	RP121097	Petroleum product or oil storage	High
1	RP154835	Petroleum product or oil storage	High
35	RP191045	Petroleum product or oil storage	High
17	RP100716	Petroleum product or oil storage	High
35	SL805565	Petroleum product or oil storage	High
3; 7	RP8693	Petroleum product or oil storage	High
10; 12	RP73327	Petroleum product or oil storage	High
9	SL806184	Petroleum product or oil storage	High
21; 22	SP183609	Petroleum product or oil storage	High
2	RP10855	Petroleum product or oil storage	High
1	RP10859	Petroleum product or oil storage	High
1	RP86690	Petroleum product or oil storage	High
1; 3	RP46495	Petroleum product or oil storage	High
21-24	RP10779	Petroleum product or oil storage	High
16	RP10778	Petroleum product or oil storage	High
35; 36	RP10790	Petroleum product or oil storage	High
23	RP146760	Petroleum product or oil storage	High
6; 7; 17	RP9713	Petroleum product or oil storage	High
1	SP196776	Petroleum product or oil storage	High
2-5	SP195250	Petroleum product or oil storage	High
40; 41	SP196964	Petroleum product or oil storage	High
1	RP157793	Petroleum product or oil storage	High
4	RP45691	Petroleum product or oil storage	High
20	RP909220	Petroleum product or oil storage	High

Lot number(s)	Plan number	Notifiable activity	Risk
1	RP138453	Petroleum product or oil storage	High
13-16	B31671	Petroleum product or oil storage	High
1	SL805627	Petroleum product or oil storage	High
2; 3	RP10904	Petroleum product or oil storage	High
2	SP144596	Petroleum product or oil storage	High
3	SP190738	Petroleum product or oil storage	High
4	SP190738	Petroleum product or oil storage	High
414	SL8740	Petroleum product or oil storage	High
492	CP855445	Petroleum product or oil storage	High
101; 532	CP905886	Petroleum product or oil storage	High
1	RP110657	Petroleum product or oil storage	High
1	RP1068	Petroleum product or oil storage	High
2	RP111828	Petroleum product or oil storage	High
22; 23; 36; 37	B118243	Petroleum product or oil storage	High
1; 2	RP182958	Petroleum product or oil storage	High
12	B118229	Petroleum product or oil storage	High
5	RP202845	Petroleum product or oil storage	High
50	RP200074	Petroleum product or oil storage	High
2; 3	RP1068	Petroleum product or oil storage	High
1; 2	RP615	Petroleum product or oil storage	High
1	RP616	Petroleum product or oil storage	High
2	RP640	Petroleum product or oil storage	High
1-4	RP43986	Petroleum product or oil storage	High
1	RP641	Petroleum product or oil storage	High
18	RP209685	Petroleum product or oil storage	High
2	RP107515	Petroleum product or oil storage *** railway yards	High
10	SP163247	Petroleum product or oil storage *** railway yards	High
100	RP166880	Petroleum product or oil storage *** scrap yards	High
1	RP129954	Service stations/ petroleum product or oil storage	High
957	SL7763	Petroleum product or oil storage *** waste storage; treatment or disposal	High
2	RP37416	Petroleum product or oil storage *** waste storage; treatment or disposal	High
818	SL5746	Petroleum product or oil storage *** waste storage; treatment or disposal	High
82	SL8293	Petroleum product or oil storage *** waste storage; treatment or disposal	High
2	SP114795	Petroleum product or oil storage *** waste	High

Lot number(s)	Plan number	Notifiable activity	Risk
		storage; treatment or disposal	
25	RP910504	Petroleum product or oil storage/hazardous contaminant	High
40	SP134959	Petroleum product or oil storage/hazardous contaminant	High
2	RP185046	Petroleum product or oil storage/hazardous contaminant	High
651	SP141435	Petroleum product or oil storage/hazardous contaminant	High
14; 15; 19; 31; 26; 27; 34; 35; 9999	SP179450	Petroleum product or oil storage/hazardous contaminant	High
4	SP198920	Petroleum product or oil storage/hazardous contaminant	High
1; 2	RP42010	Petroleum product or oil storage/ hazardous contaminant	High
2	SP213410	Petroleum product or oil storage/ hazardous contaminant	High
3	SP213410	Petroleum product or oil storage/ landfill/ hazardous contaminant	High
3; 7; 12; 24	SP179450	Petroleum product or oil storage/hazardous contaminant	High
10	SP208752	Petroleum product or oil storage/ printing/ hazardous contaminant/ landfill	High
2	SP158926	Petroleum product or oil storage/ railway yards	High
1; 25; 26	SP207220	Petroleum product or oil storage/ railway yards	High
5	SP207221	Petroleum product or oil storage/ railway yards	High
27	SP207221	Petroleum product or oil storage/ railway yards	High
9999; 101-114; 201-266; 301-326; 328-330; 332	SP149710	Petroleum product or oil storage/ waste storage; treatment or disposal	High
1; 2	SP176922	Petroleum product or oil storage/wood treatment and preservation	High
1	RP158641	Pharmaceutical manufacture	Low
3	SP183570	Printing	Low
3	RP9891	Printing	Low
1	RP98241	Printing	Low
2	SP183570	Printing	Low
101	RP146694	Printing	Low
272	RP9348	Printing	Low
2	RP211207	Printing	Low
3	RP18645	Printing	Low
3	RP897163	Printing	Low

Lot number(s)	Plan number	Notifiable activity	Risk
225	RP37531	Printing	Low
223	RP37531	Printing	Low
3	RP9469	Printing	Low
2; 3	RP9773	Printing	Low
19	RP9723	Printing	Low
2	SP126951	Printing	Low
1	SP126951	Printing	Low
9999; 1-21	SP171627	Printing	Low
69	RP9287	Printing	Low
11	RP75685	Printing	Low
3	RP98241	Printing	Low
2	RP52004	Printing	Low
1; 2	RP47587	Printing	Low
2-4; 6-8	RP9893	Printing	Low
1-4	RP41931	Printing	Low
1	RP9892	Printing	Low
4-8	RP9891	Printing	Low
6	RP219401	Printing	Low
51	RP41460	Printing	Low
1	SP125533	Printing	Low
1	RP178147	Printing	Low
3	RP169745	Printing	Low
19	RP158201	Printing	Low
1; 119	SP150313	Printing	Low
2; 120	SP150314	Printing	Low
511	SP117370	Printing	Low
1	RP118231	Printing	Low
1	RP116564	Printing	Low
44; 45	RP9986	Printing	Low
30	RP38011	Radioactive contaminant	High
34; 35	SP158925	Railway yards	Low
1293	CP899831	Railway yards	High
1294	CP899832	Railway yards	High
14	SP119264	Railway yards	High
103; 934	SSP107067	Railway yards	High
56	SP136612	Railway yards	High
37	SP169852	Railway yards	High
35	SP207219	Railway yards	High

Lot number(s)	Plan number	Notifiable activity	Risk
32	SP169851	Railway yards	High
24	SP207219	Railway yards	High
60	SP207215	Railway yards	High
16; 29	SP207223	Railway yards	High
4	SP113018	Railway yards	High
9	SP169860	Railway yards	High
20; 22	SP169861	Railway yards	High
1	RP892797	Railway yards	High
289-292	RP37716	Railway yards	High
5	SP111346	Railway yards	High
101	SP122207	Railway yards	High
1; 3; 17	SP177545	Railway yards	High
1; 2; 9999	SP129361	Railway yards	High
1296	CP899834	Railway yards	High
1	RP45914	Railway yards	High
2; 7; 9	SP119390	Railway yards	High
10; 11	SP119391	Railway yards	High
13; 14; 15	SP119392	Railway yards	High
17-23	SP119393	Railway yards	High
21	SP117132	Railway yards	High
4	SP111345	Railway yards	High
199; 202	SP111347	Railway yards	High
198	SP111345	Railway yards	High
3	RP107515	Railway yards	High
3-5	RP94511	Railway yards	High
6	RP94512	Railway yards	High
101	SP105842	Railway yards	High
17; 19; 20	RP903101	Railway yards	High
25	RP903100	Railway yards	High
32	SP100555	Railway yards	High
34	SP100560	Railway yards	High
57	SP136612	Railway yards	High
16	SP207215	Railway yards	High
18; 21	SP207216	Railway yards	High
22; 26	SP207217	Railway yards	High
32	SP172136	Railway yards	High
19	SP169861	Railway yards	High
33; 34	SP172136	Railway yards	High

Lot number(s)	Plan number	Notifiable activity	Risk
30; 1292	SP157133	Railway yards	High
37	CP816132	Railway yards	High
1295	CP899833	Railway yards	High
1	RP88204	Railway yards	High
1	RP186083	Railway yards	High
43; 44; 46	RP37329	Railway yards	High
3	RP185695	Railway yards	High
4	RP94558	Railway yards	High
6	RP185696	Railway yards	High
3; 6; 9; 12	RP42839	Railway yards	High
700	SL3603	Railway yards	High
1; 4; 7	RP42088	Railway yards	High
1; 2	RP43706	Railway yards	High
3	RP42840	Railway yards	High
11	RP118123	Railway yards	High
2	RP209330	Railway yards	High
1	SL807939	Railway yards	High
6	SP158187	Railway yards	High
514	SP163123	Railway yards	High
103	SP179350	Railway yards	High
304	SP214092	Railway yards	High
305	SP214093	Railway yards	High
101; 102	SP214128	Railway yards	High
512	SP205160	Railway yards	High
2	SP149277	Railway yards	High
4	SP149278	Railway yards	High
60; 160	SP184385	Railway yards	High
63; 163	SP184386	Railway yards	High
61; 161	SP188566	Railway yards	High
23	CP902082	Railway yards	High
1292	CP899830	Railway yards	High
38; 39	SP169853	Railway yards	High
36	SP169852	Railway yards	High
33; 34	SP169851	Railway yards	High
21	Sp169861	Railway yards	High
1291	CP899829	Railway yards/ hazardous contaminant	High
103	SSP107067	Railway yards/ hazardous contaminant	High
1	RP898937	Scrap yards	Low

Lot number(s)	Plan number	Notifiable activity	Risk
2	RP105559	Scrap yards	Low
1	RP89631	Scrap yards	Low
2; 68	RP54391	Scrap yards	Low
2	RP55530	Scrap yards	Low
74, 75	RP9371	Scrap yards	Low
71	RP89631	Scrap yards	Low
33	RP18367	Scrap yards	Low
1	RP152614	Scrap yards	Low
35; 36	RP18424	Scrap yards	Low
3	RP152614	Scrap yards	Low
1; 2	RP64022	Scrap yards	Low
1	RP69316	Scrap yards	Low
1	RP13210	Scrap yards	Low
1; 3	RP69713	Scrap yards	Low
4	RP905523	Scrap yards	Low
2	RP224299	Scrap yards	Low
2	RP81623	Scrap yards	Low
1	RP110019	Scrap yards	Low
1	RP81623	Scrap yards	Low
5	RP37617	Scrap yards	Low
20; 25; 27-30	SP106880	Scrap yards	Low
13; 14	SP106881	Scrap yards	Low
1	SP227767	Scrap yards	Low
244-246; 193-195	RP12671	Scrap yards	Low
36; 37; 39	RP12669	Scrap yards	Low
1	RP82934	Scrap yards	Low
162	RP11503	Scrap yards	Low
5	RP92077	Scrap yards	Low
1	RP55684	Scrap yards	Low
10	B31739	Scrap yards	Low
1	RP135199	Scrap yards	Low
31	SL11356	Scrap yards	Low
15; 16	RP98634	Scrap yards	Low
10	SL5797	Scrap yards	Low
4	RP59375	Scrap yards	Low
15	RP74928	Scrap yards	Low
1; 2	RP15311	Scrap yards	Low
59	RP33567	Service stations	High

Lot number(s)	Plan number	Notifiable activity	Risk
1	RP34409	Service stations	High
9999	SP157201	Service stations	High
5	RP103689	Service stations	High
1	RP53141	Service stations	High
1	RP106811	Service stations	High
4	RP33897	Service stations	High
3	RP33897	Service stations	High
1	RP100608	Service stations	High
63	RP97766	Service stations	High
1	RP106698	Service stations	High
2	RP64059	Service stations	High
20	RP172270	Service stations	High
1	RP89174	Service stations	High
9999; 1-45	BUP7595	Service stations	High
600	RP864272	Service stations	High
2	RP97828	Service stations	High
27	RP202905	Service stations	High
11	RP217068	Service stations	High
1	RP157673	Service stations	High
10	RP221935	Service stations	High
1	RP195585	Service stations	High
1-3	RP34070	Service stations	High
2	RP46455	Service stations	High
3	RP55689	Service stations	High
1	RP98178	Service stations	High
10	RP200845	Service stations	High
1	RP108149	Service stations	High
20	RP806608	Service stations	High
10	RP100794	Service stations	High
11	RP845909	Service stations	High
1	RP47105	Service stations	High
1	RP124347	Service stations	High
1	RP863993	Service stations	High
1	RP224903	Service stations	High
176	SP217716	Service stations	High
1	RP100688	Service stations	High
1	RP87496	Service stations	High
1	RP92573	Service stations	High

Lot number(s)	Plan number	Notifiable activity	Risk
1	RP55287	Service stations	High
25; 26; 28	RP19619	Service stations	High
116	RP19643	Service stations	High
38	RP102728	Service stations	High
2	RP106099	Service stations	High
5	RP127711	Service stations	High
1	RP907285	Service stations	High
18-23	SP115242	Service stations	High
1	RP213055	Service stations	High
2	SP133321	Service stations	High
5	RP103008	Service stations	High
708	SL7161	Service stations	High
1	RP72452	Service stations	High
1	RP93286	Service stations	High
2	RP76408	Service stations	High
1	RP137726	Service stations	High
1	RP100966	Service stations	High
12	SP112598	Service stations	High
2	RP102193	Service stations	High
1	RP211716	Service stations	High
156	RP99404	Service stations	High
7	RP150509	Service stations	High
1	RP852767	Service stations	High
1	SP114335	Service stations	High
1	RP129579	Service stations	High
1	RP47800	Service stations	High
5	RP212124	Service stations	High
29	RP46856	Service stations	High
1	RP84522	Service stations	High
1	RP57365	Service stations	High
4	RP37633	Service stations	High
3	RP46870	Service stations	High
1	RP129681	Service stations	High
1	RP115066	Service stations	High
645	RP37433	Service stations	High
1	RP159899	Service stations	High
1; 2	RP131501	Service stations	High
1-4	RP136354	Service stations	High

Lot number(s)	Plan number	Notifiable activity	Risk
29	RP814324	Service stations	High
46	RP898204	Service stations	High
7	RP220745	Service stations	High
6	RP37617	Service stations	High
1	RP227075	Service stations	High
80	RP909063	Service stations	High
1	RP81166	Service stations	High
6	SP103226	Service stations	High
67-70	RP46061	Service stations	High
106	RP846555	Service stations	High
26-29	RP44192	Service stations	High
1	RP170643	Service stations	High
5	B361	Service stations	High
6	B361	Service stations	High
1	RP145390	Service stations	High
1	RP173860	Service stations	High
100	RP203369	Service stations	High
1	RP100416	Service stations	High
4; 5	RP48429	Service stations	High
1	RP11933	Service stations	High
128	RP204863	Service stations	High
1	RP93896	Service stations	High
87-89	RP12003	Service stations	High
90	RP203012	Service stations	High
1	RP99314	Service stations	High
13	RP12803	Service stations	High
1	RP116909	Service stations	High
219; 220	RP11490	Service stations	High
1	RP84335	Service stations	High
1	RP95418	Service stations	High
1	RP94295	Service stations	High
1	RP146469	Service stations	High
165	RP898190	Service stations	High
1	RP108023	Service stations	High
98	SP148180	Service stations	High
1	RP102661	Service stations	High
3	SP149658	Service stations	High
1- 8; 9999	SP149651	Service stations	High

Lot number(s)	Plan number	Notifiable activity	Risk
7	RP100888	Service stations	High
3	RP214496	Service stations	High
1	RP144711	Service stations	High
112	SP103789	Service stations	High
1	RP122028	Service stations	High
17	RP12816	Service stations	High
1; 2	RP64214	Service stations	High
20	RP12816	Service stations	High
76	RP13155	Service stations	High
1	RP40736	Service stations	High
4	RP209568	Service stations	High
1	SP140923	Service stations	High
3	RP116165	Service stations	High
1; 2	RP189321	Service stations	High
1	RP88847	Service stations	High
1	RP81784	Service stations	High
4	RP805240	Service stations	High
1	RP86312	Service stations	High
901	SP193932	Service stations	High
2; 4; 5	SP194839	Service stations	High
1	RP97924	Service stations	High
6	RP89232	Service stations	High
1	RP106720	Service stations	High
1	RP106054	Service stations	High
2	RP225377	Service stations	High
1	RP128723	Service stations	High
746	SL8062	Service stations	High
1	RP155658	Service stations	High
1	RP166419	Service stations	High
1	RP158655	Service stations	High
1; 9999	SP128792	Service stations	High
2; 3	SP143826	Service stations	High
100	RP97196	Service stations	High
4	RP98727	Service stations	High
2	RP19349	Service stations	High
733	SL7090	Service stations	High
51	RP26121	Service stations	High
103	RP25148	Service stations	High

Lot number(s)	Plan number	Notifiable activity	Risk
2	RP68231	Service stations	High
50	RP26121	Service stations	High
1	RP97627	Service stations	High
2	RP60428	Service stations	High
1	RP106920	Service stations	High
1	RP197602	Service stations	High
14-21; 42; 43	RP37872	Service stations	High
1	RP106543	Service stations	High
1	RP107206	Service stations	High
1	RP83204	Service stations	High
7	RP38011	Service stations	High
1	RP106746	Service stations	High
1240	RP848331	Service stations	High
1	RP109139	Service stations	High
2	RP162481	Service stations	High
1	RP107157	Service stations	High
6	RP179580	Service stations	High
1	RP852678	Service stations	High
10	RP904858	Service stations	High
2; 3	RP53315	Service stations	High
1	RP117268	Service stations	High
1	RP99235	Service stations	High
22	CP817735	Service stations	High
1	B32319	Service stations	High
1	RP48376	Service stations	High
1; 2	RP12243	Service stations	High
56	RP94787	Service stations	High
2	RP11862	Service stations	High
121	SP182768	Service stations	High
1-3	SP179651	Service stations	High
1	RP99090	Service stations	High
2	SP129268	Service stations	High
3	RP101656	Service stations	High
4	RP52501	Service stations	High
4	SP137684	Service stations	High
1	RP43877	Service stations	High
17	SP135243	Service stations	High
6	SP135240	Service stations	High

Lot number(s)	Plan number	Notifiable activity	Risk
1; 2	RP910688	Service stations	High
388	SP120369	Service stations	High
100	SP134740	Service stations/ petroleum product or oil storage	High
1	SP192429	Service stations/hazardous contaminant	High
1074	SP130253	Tannery; fellmongery or hide curing	Low
2	RP219785	Tannery; fellmongery or hide curing	Low
3	RP69587	Tannery; fellmongery or hide curing	Low
20	RP883269	Tannery; fellmongery or hide curing	Low
9999; 1-4	SP106163	Tannery; fellmongery or hide curing	Low
5-14	SP115906	Tannery; fellmongery or hide curing	Low
1, 2	RP841246	Tannery; fellmongery or hide curing	Low
1	RP866235	Tannery; fellmongery or hide curing	Low
1; 8	RP897648	Tannery; fellmongery or hide curing	Low
1; 999	RP853658	Tannery; fellmongery or hide curing	Low
9; 10	RP10605	Tannery; fellmongery or hide curing	Low
7	RP869214	Tannery; fellmongery or hide curing	Low
17	SP142032	Tannery; fellmongery or hide curing	Low
1	SP184982	Tannery; fellmongery or hide curing	Low
9999; 1-15	SP142033	Tannery; fellmongery or hide curing	Low
417	SL8190	Tannery; fellmongery or hide curing	Low
1207	M3117	Waste storage; treatment or disposal	Low
100	SP162583	Waste storage; treatment or disposal	Low
6	SL3439	Waste storage; treatment or disposal	Low
1	RP41650	Waste storage; treatment or disposal	Low
29	B118246	Waste storage; treatment or disposal	Low
1-3	SP135464	Waste storage; treatment or disposal	Low
16	RP37403	Wood treatment and preservation	Low
123	RP86671	Wood treatment and preservation	Low
585	SL2292	Wood treatment and preservation	Low
3; 4	RP104156	Wood treatment and preservation	Low
18	RP79962	Wood treatment and preservation	Low

Table E-3 Potentially contaminated land sites within the study corridor

Property number	Coordinates	Extrapolated property description	Notifiable activity/ land use description	Year identified
1	153.041 -27.43 Decimal Degrees	Lot 1 RR48402, Lots 2-3 RP59681, Lots 129-132 and Lots 135-136 RP19036	Possible EMR listing for 'hazardous contaminant'. Portions of the Albion Flour Mill have been listed on the EMR for 'hazardous contaminants'. Contamination of other land parcels within the Flour Mill property boundary may have occurred.	2001
2	153.039 -27.433 Decimal Degrees	Lot 1 RP103897	Possible Notifiable Activity 'petroleum product or oil storage' or 'engine reconditioning works'. Land use identified land use is a mechanic or car repairs workshop. There is a potential for the onsite storage and/or disposal of oils/fuels/lubricants etc onsite.	2001
3	153.036 -27.491 Decimal Degrees	Lots 1-2 and 30 RP101347	Possible Notifiable Activity 'service station'. Storage of petroleum fuels or oils may have occurred.	2001
4	153.028 -27.498 Decimal Degrees	Lot 1 SP140384, Lot 103 SL11351	Possible Notifiable Activity 'service station'. Poor resolution in previous images makes confirmation difficult. However, site layout and disturbed land surface may indicate tank removal/reconfiguration.	2001
6	153.011 -27.543 Decimal Degrees	Lot 907 SP149004	Possible Notifiable Activity 'railway yard'. Land appears devoid of vegetative cover throughout imagery, and has not been developed. Potential for pesticides, metals, fuels and oils to be present from leaks/spills or from surface application. Also, Possible Notifiable Activity 'engine reconditioning works' or 'service station'. Land use identified from the Brisbane City Council 1965 Land Use Plan as 'garage and service station'.	1960-2001
7	153.014 -27.545 Decimal Degrees	Lot 1 SP103965, Lot 3 SP171541	Possible Notifiable Activity 'railway yards'. Disturbed land potentially used for goods storage near rail corridor. Potential for pesticides, metals, fuels and oils to be present from leaks/spills or from surface application.	1960-1972

Property number	Coordinates	Extrapolated property description	Notifiable activity/ land use description	Year identified
8	153.02 -27.55 Decimal Degrees	Lots 2-5 RP96035	Possible Notifiable Activity 'petroleum product or oil storage' or 'engine reconditioning works'. Land use identified as possible mechanic or car repairs workshop. There is a potential for the onsite storage and/ or disposal of oils/fuels/lubricants etc onsite.	2001
9	153.031 -27.562 Decimal Degrees	Lot 1 RP897094	Possible Notifiable Activity 'scrap yards'. Land use identified as storage facility for unknown goods. Potential for the historic storage of chemicals, pesticides, fuels or oils.	2001
10	153.032 -27.561 Decimal Degrees	Lot 1 RP174535	Possible Notifiable Activity 'chemical storage'. Land use identified as storage facility for unknown goods. Potential for the historic storage of chemicals, pesticides, fuels or oils.	2001
11	153.023 -27.556 Decimal Degrees	Lots 10-14 RP75020, Lot 1 RP112751, Lots 4-5 RP105182	Possible Notifiable Activity 'scrap yard' or 'landfill'. Land use identified as possible car scrap yard. Potential for hydrocarbons, paints, solvents or lubricants to be stored onsite. Historical photography (1960, 1970-1972) indicates substantial disturbance of the land surface, potentially indicating that material may have been stockpiled onsite, or the area may have been used for dumping wastes. The property does not correspond to records of known Brisbane City Council landfills.	1960-2001
12	153.031 -27.469 Decimal Degrees	Lot 50 RP87615	Possible Notifiable Activity 'petroleum product or oil storage'. Land use identified as boat and ferry mooring. Storage of fuels for boat refuelling at the docks is possible.	2001
13	153.023 -27.512 Decimal Degrees	Lots 231-233 RP37252	Possible Notifiable Activity 'landfill'. Land use has not changed significantly over time, and remains vacant land. The site does not correspond with any landfill records provided by Brisbane City Council as part of this investigation.	1970-2001
14	153.018 -27.516 Decimal Degrees	Lot 1 SL2602	Possible Notifiable Activity 'railway yards'. Disturbed land potentially used for goods storage near rail corridor. Potential for pesticides, metals, fuels and oils to be present from leaks/spills or from surface application.	1960-2001

Property number	Coordinates	Extrapolated property description	Notifiable activity/ land use description	Year identified
15	153.03 -27.482 Decimal Degrees	Lot 403 SL806415	Possible Notifiable Activity 'railway yards'. Land use identified as former wharves. Land formerly had rail access and goods storage. Potential for pesticides, metals, fuels and oils to be present from leaks/spills or from surface application.	1946
16	153.038 -27.447 Decimal Degrees	Lot 1 RP172803, and Lots 1 and 6 RP116943	Possible Notifiable Activity 'service stations'. Site identified during historical aerial photo review conducted during NSBT EIS (SKM 2004)*. When asked regarding any documented history as part of NSBT, Brisbane City Council confirmed they had no record of the site.	1974
17	153.036 -27.448 Decimal Degrees	Lot A RP44589, Lots 3-5 SP213464	Possible EMR listing for 'hazardous contaminants'. As identified in the Northern Link EIS (SKM 2008)**. In 1940, 1955, 1960 and 1965 the site was residential. In 1978 and 1987 the site was cleared. In 1994, 2001 and 2007 Unidentified stockpiled fill material was observed on the site.	2001
18	153.037 -27.445 Decimal Degrees	Lot 103 SP155738	Possible Notifiable Activity 'railway yards'. Site identified during historical aerial photo review conducted during NSBT EIS (SKM 2004)*. Brisbane City Council records have site being used for a prescribed purpose – railway yard.	1974
19	153.031 -27.462 Decimal Degrees	Lot 101 RP170326	Possible Notifiable Activity 'service station'. Site identified during historical aerial photo review conducted during NSBT EIS (SKM 2004)*. When asked regarding any documented history as part of NSBT, Brisbane City Council confirmed they had no record of the site.	1961
21	153.026 -27.463 Decimal Degrees	SP180416	Possible Notifiable Activity 'service station'. Site identified during historical aerial photo review conducted during Northern Link EIS (SKM 2008)**. When asked regarding any documented history as part of NSBT, Brisbane City Council advised that records showed the site was released from EMR on 2/12/2003. The site was formerly a service station from 1969 to 1990. Release from the EMR would indicate that the site has been remediated.	1961

Property number	Coordinates	Extrapolated property description	Notifiable activity/ land use description	Year identified
22	153.029 -27.462 Decimal Degrees	Lot 1 RP196222	Possible Notifiable Activity 'service station'. Site identified during historical aerial photo review conducted during NSBT EIS (SKM 2004)*. When asked regarding any documented history as part of NSBT, Brisbane City Council confirmed they had no record of the site.	1961
23	153.024 -27.461 Decimal Degrees	Lot 1 RP868432	Possible Notifiable Activity 'service station'. Site identified during historical aerial photo review conducted during NSBT EIS (SKM 2004)*. Site has possibly: <ul style="list-style-type: none"> • been notified to DERM and subsequently removed from the EMR/CLR; or • been notified to DERM, however DERM has not listed the site on the EMR/CLR. • Clarification on the status of the site with DERM will be required. 	1974
24	153.023 -27.462 Decimal Degrees	Lot 7 RP211146	Possible Notifiable Activity 'service station'. Site identified during historical aerial photo review conducted during NSBT EIS (SKM 2004)*. When asked regarding any documented history as part of NSBT, Brisbane City Council confirmed they had no record of the site.	1974
25	153.036 -27.483 Decimal Degrees	Lot 1 RP108375	Possible Notifiable Activity 'service station'. Site identified during historical aerial photo review conducted during NSBT EIS (SKM 2004)*. During research of the site for NSBT, a fax from DERM, 27/09/1999, indicated the site was released on 16/6/1995 from the EMR. Release from the EMR would indicate that the site has been remediated.	1974
26	153.028 -27.482 Decimal Degrees	Lot 404 SL806415, Lot 12 SP143587, Lot 403 SL806415	Possible Notifiable Activity 'railway yards'. Site identified during historical aerial photo review conducted during NSBT EIS (SKM 2004)*. When asked regarding any documented history as part of NSBT, Brisbane City Council confirmed they had no record of the site.	1961

Property number	Coordinates	Extrapolated property description	Notifiable activity/ land use description	Year identified
27	153.036 -27.486 Decimal Degrees	Lot 2 B31553	<p>Possible Notifiable Activity 'service station'.</p> <p>Site identified during historical aerial photo review conducted during NSBT EIS (SKM 2004)*.</p> <p>Identified on 1965 Brisbane City Council plan as 'garage and service station'. When asked regarding any documented history as part of NSBT, Brisbane City Council confirmed they had no record of the site.</p> <p>The site is now part of the Woolloongabba Cricket Grounds complex.</p>	1961
28	153.036 -27.488 Decimal Degrees	Lot 172 RP826415	<p>Possible Notifiable Activity 'service station'.</p> <p>Site identified during historical aerial photo review conducted during NSBT EIS (SKM 2004)*. Site has possibly:</p> <ul style="list-style-type: none"> • been notified to DERM and subsequently removed from the EMR/CLR; or • been notified to DERM, however, DERM has not listed the site on the EMR/CLR. <p>Clarification on the status of the site with DERM will be required.</p> <p>Site formerly had motor spirit (petrol) in 2 x 17,900L underground storage tanks.</p>	1961
29	153.036 -27.49 Decimal Degrees	Lots 31 and 32 RP11846, Lot 1 RP91907	<p>Possible Notifiable Activity 'service station'.</p> <p>Site identified during historical aerial photo review conducted during NSBT EIS (SKM 2004)*. When asked regarding any documented history as part of NSBT, Brisbane City Council advised that they had notified DERM of the operation of the property as a service station.</p> <p>The site review (4/12/2001) found that the land parcels were occupied by a service station between 1955 and 1977. In 1977, a car repair shop was established. No notifiable activities were found for the repair shop.</p> <p>Current use of the site is offices.</p>	1961
30	153.036 -27.489 Decimal Degrees	Lots 15 and 17 RP94192	<p>Possible Notifiable Activity 'service station'.</p> <p>Site identified during historical aerial photo review conducted during NSBT EIS (SKM 2004)*. When asked regarding any documented history as part of NSBT, Brisbane City Council confirmed they had no record of the site.</p>	1973

Property number	Coordinates	Extrapolated property description	Notifiable activity/ land use description	Year identified
31	153.036 -27.49 Decimal Degrees	Lot 20 RP208870	Possible Notifiable Activity 'service station'. Site identified during historical aerial photo review conducted during NSBT EIS (SKM 2004)*. When asked regarding any documented history as part of NSBT, Brisbane City Council confirmed the site is already listed on the EMR for 'Metal Treatment or Coating'.	1961
32	153.040 -27.432 Decimal Degrees	Lot 5 BUP10301, Lot 6 BUP11168, Lots 11-12 BUP11273	Possible Notifiable Activity 'Wood Treatment or Preservation'. Land use identified from the Brisbane City Council 1965 Land Use Plan as 'Campbell's Mill'.	1960
33	153.039 -27.430 Decimal Degrees	Lot 37 RP204859	Possible Notifiable Activity 'service station'. Land use identified from the Brisbane City Council 1965 Land Use Plan as 'fuel depot'. Land use cannot be confirmed due to poor image quality.	1960
35	153.031-27.443 Decimal Degrees	Lot 2 RP56087	Listed on EMR for 'asbestos manufacture or disposal' Other possible Notifiable Activities include 'paint manufacture or formulation', 'railway yards' or 'wood treatment and preservation'. Land use identified from the Brisbane City Council 1965 Land Use Plan as 'paint manufacturer/spare parts'. According to the Airport Link EIS (SKM 2006), this property is noted on the Brisbane City Council records as being used by Queensland Rail for railway maintenance, chemical storage, mechanical workshops and asphalt manufacturing, and once held an active flammable and combustible goods license. Buildings appear to have been developed on the property in approximately 1950. By 1960, there is evidence of timber storage onsite. The site had been cleared of all infrastructure and buildings by 1994.	1945-2007
37	153.041-27.438 Decimal Degrees	Lot 219 RP9371	Possible Notifiable Activity 'engine reconditioning works'. Land use identified from the Brisbane City Council 1965 Land Use Plan as 'motor mechanic'.	1960
38	153.025-27.461 Decimal Degrees	SP180375	Possible Notifiable Activity 'engine reconditioning works'. Land use identified from the Brisbane City Council 1965 Land Use Plan as 'Metropolitan Motors'.	1960

Property number	Coordinates	Extrapolated property description	Notifiable activity/ land use description	Year identified
39	153.033 -27.483 Decimal Degrees	Lots 1-5 and 7-15 RP11595, Lot 1 RP124676	Possible Notifiable Activity 'wood treatment or preservation'. Land use identified from the Brisbane City Council 1965 Land Use Plan as 'timber yard and sawmill'. Parts of the area are already listed on the EMR, however it is not known if this is linked to the identified historical land use.	1960
41	153.034 -27.493 Decimal Degrees	Lot 3 SP189071	Possible Notifiable Activity 'engine reconditioning works'. Land use identified from the Brisbane City Council 1965 Land Use Plan as 'garage'.	1960
42	153.035 -27.489 Decimal Degrees	Lots 1-5 RP12251, Lot 67 RP840464, Lot 1 RP12254, Lot 1 SP172142, Lot 1 RP12253, Lots 20 and 24 RP12250, Lot 1 RP126063, Lots 2 and 17 RP12250, Lot 1 RP81424	Possible Notifiable Activity 'wood treatment or preservation'. Land use identified from the Brisbane City Council 1965 Land Use Plan as 'Hancock and Gore Timber Yard'.	1960
43		Lot s 173-196 SP155654	Possible Notifiable Activity 'engine reconditioning works'. Land use identified from the Brisbane City Council 1965 Land Use Plan as 'garage'.	1960
46	153.028 -27.499 Decimal Degrees	Lot 2 RP80769	Possible Notifiable Activity 'landfill'. Land use identified from the Brisbane City Council 1965 Land Use Plan as 'disused bricks'	1960
47	153.028 -27.499 Decimal Degrees	Lot 1 RP68022	Possible Notifiable Activity 'engine reconditioning works' or 'service station'. Land use identified from the Brisbane City Council 1965 Land Use Plan as 'garage and service station'.	1960
49	153.023 -27.510 Decimal Degrees	Lot 11 RP220792	Possible Notifiable Activity 'engine reconditioning works' or 'service station'. Land use identified from the Brisbane City Council 1965 Land Use Plan as 'garage and service station'.	1960

Property number	Coordinates	Extrapolated property description	Notifiable activity/ land use description	Year identified
50	153.019 -27.514 Decimal Degrees	Lots 2-4 RP60057	Possible Notifiable Activity 'engine reconditioning works' or 'service station'. Land use identified from the Brisbane City Council 1965 Land Use Plan as 'garage and depot'.	1960
51	153.016 -27.518 Decimal Degrees	Lot 1 SP206931	Possible Notifiable Activity 'engine reconditioning works'. Land use identified from the Brisbane City Council 1965 Land Use Plan as 'motor mechanic'.	1960
52	153.012 -27.527 Decimal Degrees	Lots 1-10 SP197385, Lots 10-12 RP121383, Lots 4-7 RP114498	Possible Notifiable Activity 'Landfill'. Land use identified from the Brisbane City Council 1965 Land Use Plan as 'Thiess Bros'. Significant disturbance on the surface of the site may indicate that land filling activities have occurred.	1960
53	153.014 -27.533 Decimal Degrees	Lots 72-79 RP37616, Lot 1 RP37617, Lot 31 RP133151, Lot 1 RP131713, Lots 33-34 SP211322	Possible Notifiable Activity 'wood treatment or preservation'. Land use identified from the Brisbane City Council 1965 Land Use Plan as 'timber yard and sawmill'.	1960
54	153.011 -27.541 Decimal Degrees	Lots 0-4 BUP106842	Possible Notifiable Activity 'engine reconditioning works' or 'service station'. Land use identified from the Brisbane City Council 1965 Land Use Plan as 'garage and service station'.	1960
56	153.009 -27.541 Decimal Degrees	Lot 3 RP121339, Lot 2 SP149452	Possible Notifiable Activity 'wood treatment or preservation'. Land use identified from the Brisbane City Council 1965 Land Use Plan as 'timber mill/timber yard'. Part of the property is already listed on the EMR for the Notifiable Activity 'petroleum product or oil storage'.	1960
57	153.010 -27.542 Decimal Degrees	Lot 714 SL3928	Possible Notifiable Activity 'wood treatment or preservation'. Land use identified from the Brisbane City Council 1965 Land Use Plan as 'timber yard'.	1960
58	153.016 -27.547 Decimal Degrees	Lot 5 RP167929, Lot 1 SL4799	Possible Notifiable Activity 'wood treatment or preservation'. Land use identified from the Brisbane City Council 1965 Land Use Plan as 'timber yard'.	1960

Property number	Coordinates	Extrapolated property description	Notifiable activity/ land use description	Year identified
59	153.018 -27.546 Decimal Degrees	Lots 1-2 RP63875, Lots 1-2 RP148372, Lot 1237 SL7944	Possible Notifiable Activity 'asbestos manufacture or disposal'. Land use identified from the Brisbane City Council 1965 Land Use Plan as 'fibrous plaster works'.	1970-1972
177	153.026 -27.499 Decimal Degrees	Lot 217 M31122, Lot 526 B3382	Possible Notifiable Activity 'hazardous contaminant'. Cemetery present since before 1946. Potential for low level contamination of groundwater from nitrate, ammonia, bacteria and a range of inorganic substances.	pre 1946 - present
60	153.023 -27.538 Decimal Degrees	Lot 594 SP118821	Possible Notifiable Activity 'landfill'. Site adjacent EMR listed landfill to the south (Lot 1 SL2069). Historical aerial photo (1970s) indicates very similar ground cover conditions (possibly post restoration) to the adjacent landfill. Site never subsequently developed.	1970s
61	153.031 -27.564 Decimal Degrees	Lot 4 RP72089	Possible Notifiable Activity 'landfill' or EMR listing for 'hazardous contaminants'. Filled creek bed. Source of fill is unknown and may have come from uncertified sources or refuse materials.	2001
63	153.029 -27.458 Decimal Degrees	Lots 3-5 SL12666, Lot 17 B32305	Possible Notifiable Activity 'landfill'. Land use has not changed significantly over time and remains vacant. The site does not correspond with any landfill records provided by Brisbane City Council as part of this investigation.	1946
64	153.036, -27.416 Decimal Degrees	Lot 25 on RP841248 (formerly Lots 2 and 3 on RP45943)	Possible Notifiable Activity 'petroleum product or oil storage' or 'service station'. Land use identified as former service station and mechanical workshop by the Airport Link EIS (SKM 2006). According to the Airport Link EIS, historical Brisbane City Council building records indicate that the site operated as a service station and motor vehicle workshop from 1932 until the late 1980's. The property has since been acquired by Brisbane City Council for redevelopment to Lutwyche Road. An investigation undertaken by OTEK in 1994 which was reviewed as part of the Airport Link EIS indicated that the properties contained concentrations of hydrocarbons, Benzene, Toluene, Ethyl benzene, Xylenes and Lead at concentrations above the (then) EPA Investigation Criteria. Asbestos was	1960

Property number	Coordinates	Extrapolated property description	Notifiable activity/ land use description	Year identified
			also identified in soil at the property.	
65	153.032 -27.428 Decimal Degrees	Lot 882 on SL8070	Possible Notifiable Activity 'landfill' or EMR listing for 'hazardous contaminants'. Over the period of the aerial photography review, the property appears to have continual significant disturbance of the majority of the ground surface, which may indicate that the property has been used as a landfill or quarried. The property does not correspond to any known landfill records provided by Brisbane City Council as part of this investigation. The property appears to have been redeveloped by the 1994 imagery, which suggests that the property is now open space, possibly public parklands.	1950-2001
67	153.030 -27.445 Decimal Degrees	Lot 1 on SP193899, Lot 1 on RP152622, Lot 11 SP193900, Lot 2 SP193900	Possible Notifiable Activity 'scrap yards'. In the 1946 aerial imagery, the surface of the property appears to be covered by stockpiled tyres or scrap metal. According to the Northern Link EIS (SKM 2008)**, two rows of scrap tyres or metal are evident in the 1955 aerial imagery. The property was redeveloped for a more commercial/industrial land use by the 1970s aerial photography.	1946-1972
68	153.033 -27.453 Decimal Degrees	Lot 35-37 SP196756	Possible Notifiable Activity 'service stations'. Site identified during historical aerial photo review conducted during NSBT EIS (SKM 2004)*. When asked regarding any documented history as part of NSBT, Brisbane City Council confirmed they had no record of the site.	1974
69	153.032 -27.455 Decimal Degrees	Lot 1 RP231109	Possible Notifiable Activity 'service stations'. Site identified during historical aerial photo review conducted during NSBT EIS (SKM 2004)*. When asked regarding any documented history as part of NSBT, Brisbane City Council confirmed they had no record of the site.	1961
70	153.028 -27.455 Decimal Degrees	Lot 4 RP206795	Possible Notifiable Activity 'service station'. Site identified during historical aerial photo review conducted during NSBT EIS (SKM 2004)*. When asked regarding any documented history as part of NSBT, Brisbane City Council confirmed they had no record of the site.	1961

Property number	Coordinates	Extrapolated property description	Notifiable activity/ land use description	Year identified
71	153.029 -27.453 Decimal Degrees	Lots 1 and 5 RP81335	Possible Notifiable Activity 'scrap yards'. Site identified during historical aerial photo review conducted during NSBT EIS (SKM 2004)*. When asked regarding any documented history as part of NSBT, Brisbane City Council confirmed they had no record of the site.	1961
72	153.031 -27.456 Decimal Degrees	Lot 1 RP44192	Possible Notifiable Activity 'service station'. Site identified during historical aerial photo review conducted during NSBT EIS (SKM 2004)*. When asked regarding any documented history as part of NSBT, Brisbane City Council confirmed they had no record of the site.	1961
73	153.013 -27.453 Decimal Degrees	Lot 13 SP186853	Possible 'landfill' This site abuts Lot 556 SP133445 to the west which is listed on the EMR as a landfill. 2005 site cleared used as construction laydown/ car park area. 1994 and 1987 site and Lot 556 open parkland. In 1960 and 1940 the site together with Lot 556 has disturbed areas throughout indicating that the site is operating as a landfill. Brisbane City Council contacted as part of the Northern Link EIS records show the site was listed on the EMR for 'landfill' in 1994. Site Management Plan/Remediation Plan was approved for the site in March 2006, with the site remediated and removed from the EMR in August 2006.	1960
75	153.003 -27.460 Decimal Degrees	Lot 21 RP202680	Possible Notifiable Activity 'service station'. Site identified during historical aerial photo review conducted during Northern Link EIS (SKM 2008)**. In 1980 the site looked to resemble a service station and in 1978, 1977, 1969 and 1960 the site had a commercial/industrial land use. Part of lot identified as 'industrial' on 1965 Brisbane City Council plan.	1969
76	153.003 -27.473 Decimal Degrees	Lots 1-5 RP883055	Possible Notifiable Activity 'petroleum product or oil storage'. Site identified during historical aerial photo review conducted during Northern Link EIS (SKM 2008)**. This site abuts Lot 6 on SP135242 that is listed on the EMR as a service	1969

Property number	Coordinates	Extrapolated property description	Notifiable activity/ land use description	Year identified
			station. The land was vacant in 1951 but has been increasingly developed in occupancy of what appears to be commercial/light industrial use. Few changes in configuration have been made since 1969.	
77	153.004 -27.473 Decimal Degrees	Lot 1 RP211215, Lot 1 RP139280	Possible Notifiable Activity 'landfill' or EMR listing for 'hazardous contaminants'. Site identified during historical aerial photo review conducted during Northern Link EIS (SKM 2008)**. This site abutts Lot 6 on SP135242, which is listed on the EMR as a service station. The south west boundary also abutts a substantial stormwater drain that has been in existence since the early 1960's. The land was vacant in 1951 but has been increasingly developed in occupancy of what appears to be commercial/light industrial use. Few changes in configuration have been made since 1969. Possible Notifiable Activity 'engine reconditioning works'. Land use identified from the Brisbane City Council 1965 Land Use Plan as 'carrier depot and garage'.	1951-1960
79	153.039 - 27.456 Decimal Degrees	Lot 1 SP120359	Possible Notifiable Activity 'petroleum product or oil storage' or 'engine reconditioning works'. Site identified during historical aerial photo review conducted during NSBT EIS (SKM 2004)*. Site has possibly: <ul style="list-style-type: none"> • been notified to DERM and subsequently removed from the EMR/ CLR; or • been notified to DERM, however DERM has not listed the site on the EMR/ CLR. Clarification on the status of the site with DERM will be required. Part of site identified as 'industrial' on 1965 Brisbane City Council plan.	1961
81	153.039 -27.453 Decimal Degrees	SP161323, SP148169, SP148170, SP163659, SP148169, SP172654, SP163619, SP161323	Possible Notifiable Activity 'coal gas works'. Site identified during historical aerial photo review conducted during NSBT EIS (SKM 2004)*. When asked regarding any documented history as part of NSBT, Brisbane City Council advised (13/7/04) that this site has been remediated and removed from the DERM EMR/ CLR. Site marked on 1965 Brisbane City Council plan as 'gas holder' and 'Brisbane City Council tram depot'	1961-1974

Property number	Coordinates	Extrapolated property description	Notifiable activity/ land use description	Year identified
82	153.039 -27.452 Decimal Degrees	Lot 100 SP193954	<p>Possible Notifiable Activity 'petroleum product or oil storage' or 'engine reconditioning works'.</p> <p>Site identified during historical aerial photo review conducted during NSBT EIS (SKM 2004)*. When asked regarding any documented history as part of NSBT, Brisbane City Council advised (13/7/04) that this site has been remediated and removed from the DERM EMR/ CLR.</p> <p>Property area marked on 1965 Brisbane City Council plan as part of 'Brisbane City Council tram depot'</p>	1974
83	153.036 -27.46 Decimal Degrees	Lot 0 BUP106504	<p>Possible Notifiable Activity 'service station'.</p> <p>Site identified during historical aerial photo review conducted during NSBT EIS (SKM 2004)*.</p> <p>Site has possibly:</p> <ul style="list-style-type: none"> • been notified to DERM and subsequently removed from the EMR/ CLR; or • been notified to DERM, however DERM has not listed the site on the EMR/ CLR. <p>Clarification on the status of the site with DERM will be required.</p>	1961
84	153.032 -27.459 Decimal Degrees	Lot 1 RP9481	<p>Possible Notifiable Activity 'scrap yard'.</p> <p>Site identified during historical aerial photo review conducted during NSBT EIS (SKM 2004)*. When asked regarding any documented history as part of NSBT, Brisbane City Council confirmed they had no record of the site.</p>	1961
85	153.031 -27.459 Decimal Degrees	Lots D and E RP852856, Lots 52 and 54 RP47036	<p>Possible Notifiable Activity 'service station'.</p> <p>Site identified during historical aerial photo review conducted during NSBT EIS (SKM 2004)*.</p> <p>Site has possibly:</p> <ul style="list-style-type: none"> • been notified to DERM and subsequently removed from the EMR/ CLR; or • been notified to DERM, however DERM has not listed the site on the EMR/ CLR. <p>Clarification on the status of the site with DERM will be required.</p>	1961

Property number	Coordinates	Extrapolated property description	Notifiable activity/ land use description	Year identified
			Site formerly stored distillate (diesel) in 1 X 25,000L underground storage tank.	
86	153.037 -27.47 Decimal Degrees	Lot 0 SP154872	<p>Possible Notifiable Activity 'wood treatment and preservation' or 'foundry operations' or 'engine reconditioning works'.</p> <p>Site identified during historical aerial photo review conducted during NSBT EIS (SKM 2004)*. When asked regarding any documented history as part of NSBT, Brisbane City Council commented that their records showed Lot 10 on SP130737 listed on the EMR for printing.</p> <p>Clarification on the status of the remaining properties with DERM will be required.</p> <p>Property area marked on 1965 Brisbane City Council plan as 'engineering'</p>	1951
87	153.036 -27.475 Decimal Degrees	Lot 1 RP88727, Lots 108-109 RP868472, Lots 18-19 RP868472	<p>Possible Notifiable Activity 'service station'.</p> <p>Site identified during historical aerial photo review conducted during NSBT EIS (SKM 2004)*. Site has possibly:</p> <ul style="list-style-type: none"> • been notified to DERM and subsequently removed from the EMR/ CLR; or • been notified to DERM, however DERM has not listed the site on the EMR/ CLR. <p>Clarification on the status of the site with DERM will be required.</p>	1961
88	153.041 -27.479 Decimal Degrees	Lot 0 SP148578	<p>Possible Notifiable Activity 'service station'.</p> <p>Site identified during historical aerial photo review conducted during NSBT EIS (SKM 2004)*.</p> <p>When asked regarding any documented history as part of NSBT, Brisbane City Council records indicated that notice of removal of land from EMR was dated 19/12/2001. Site was former service station and has since been remediated.</p>	1961-1974
89	153.042 -27.479 Decimal Degrees	Lot 0 SP215092	<p>Possible Notifiable Activity 'service station'.</p> <p>Site identified during historical aerial photo review conducted during NSBT EIS (SKM 2004)*. Site was identified from the Brisbane City Council 1965 Land Use Plan mapping.</p>	1960

Property number	Coordinates	Extrapolated property description	Notifiable activity/ land use description	Year identified
91	153.038 -27.483 Decimal Degrees	Lot 91 RP863661, Lot 2 SP181711	Possible Notifiable Activity 'scrap yards'. Site identified during historical aerial photo review conducted during NSBT EIS (SKM 2004)*. When asked regarding any documented history as part of NSBT, Brisbane City Council confirmed they had no record of the site.	1961
92	153.039 -27.485 Decimal Degrees	Lot 85 on RP11335, Lot 345 on RP227507	Possible Notifiable Activity 'service station'. Site identified during historical aerial photo review conducted during NSBT EIS (SKM 2004)*. When asked regarding any documented history as part of NSBT, Brisbane City Council confirmed they had no record of the site.	1961
93	153.038 -27.488 Decimal Degrees	Lot 3 BUP9537	Possible Notifiable Activity 'scrap yards'. Site identified during historical aerial photo review conducted during NSBT EIS (SKM 2004)*. When asked regarding any documented history as part of NSBT, Brisbane City Council confirmed they had no record of the site.	1961
94	153.039 -27.489 Decimal Degrees	Lot 1 on RP42211	Possible Notifiable Activity 'service station'. Site identified during historical aerial photo review conducted during NSBT EIS (SKM 2004)*. When asked regarding any documented history as part of NSBT, Brisbane City Council confirmed they had no record of the site. Land use identified from the Brisbane City Council 1965 Land Use Plan as 'garage and service station'.	1961
95	153.04 -27.49 Decimal Degrees	Lot 1 BUP9750	Possible Notifiable Activity 'service station'. Site identified during historical aerial photo review conducted during NSBT EIS (SKM 2004)*. When asked regarding any documented history as part of NSBT, Brisbane City Council confirmed they had no record of the site.	1961
96	153.028 -27.489 Decimal Degrees	Lot 10 on RP211687	Possible Notifiable Activity 'Wood Treatment and Preservation'. Site identified during historical aerial photo review conducted during NSBT EIS (SKM 2004)*. When asked regarding any documented history as part of NSBT, Brisbane City Council confirmed they had no record of	1961

Property number	Coordinates	Extrapolated property description	Notifiable activity/ land use description	Year identified
			the site.	
97	153.028 -27.489 Decimal Degrees	Lot 1 RP84528	<p>Possible Notifiable Activity 'service station'.</p> <p>Site identified during historical aerial photo review conducted during NSBT EIS (SKM 2004)*. When asked regarding any documented history as part of NSBT, Brisbane City Council indicated that their records showed site was licensed under The Flammable and Combustible Liquids Regulations 1990.</p> <p>An inspection on 14 July 1994 revealed that premises no longer operated as a service station. Two underground storage tanks and dispensing pumps had been removed. The license was cancelled 21 July 1994.</p> <p>The former service station contained a 1 x 27,300L underground tank for motor spirits (petrol).</p> <p>Clarification on the status of the site with DERM will be required.</p>	1961
98	153.035 -27.419 Decimal Degrees	BUP11203, BUP2608	Possible Notifiable Activity 'engine reconditioning works'. Land use identified from the Brisbane City Council 1965 Land Use Plan as 'motor mechanics'. Land use cannot be confirmed due to poor image quality.	1970-1972
99	153.035 -27.420 Decimal Degrees	Lots 42-43 RP19344	<p>Possible Notifiable Activity 'engine reconditioning works'.</p> <p>Land use identified from the Brisbane City Council 1965 Land Use Plan as 'body works'. Land use cannot be confirmed due to poor image quality.</p>	1970-1972
100	153.046 -27.428 Decimal Degrees	Lot 20 SP134912	<p>Possible Notifiable Activity 'engine reconditioning works'.</p> <p>Land use identified from the Brisbane City Council 1965 Land Use Plan as 'motor mechanic'.</p>	1960
101	153.047 -27.427 Decimal Degrees	Lot 1 RP53519	<p>Possible Notifiable Activity 'wood treatment or preservation'.</p> <p>Land use identified from the Brisbane City Council 1965 Land Use Plan as 'Marsden Mill'.</p>	1960
102	153.044 -27.434 Decimal Degrees	Lots 38-41 RP18372	<p>Possible Notifiable Activity 'drum conditioning or recycling'.</p> <p>Land use identified from the Brisbane City Council 1965 Land Use Plan as 'Drum Store'. Potential for leaks and spills associated with chemical storage.</p>	1960

Property number	Coordinates	Extrapolated property description	Notifiable activity/ land use description	Year identified
103	153.033 -27.429 Decimal Degrees	Lot 4 RP41407, Lot 3 RP18983	Possible Notifiable Activity 'engine reconditioning works'. Land use identified from the Brisbane City Council 1965 Land Use Plan as 'motor engineer'.	1960
104	153.031 -27.433 Decimal Degrees	Lots 1048 and 1050 SL4861, Lots 3-4 RP18451	Possible Notifiable Activity 'engine reconditioning works'. Land use identified from the Brisbane City Council 1965 Land Use Plan as 'motor body sprayer/refrigeration/motor engineer'.	1960
105	153.032 -27.424 Decimal Degrees	Lots 1-5 SP140927	Possible Notifiable Activity 'engine reconditioning works'. Land use identified from the Brisbane City Council 1965 Land Use Plan as 'motor engineer'.	1960
106	153.031 -27.432 Decimal Degrees	Lot 27 RP80006	Possible Notifiable Activity 'service station'. Land use identified from the Brisbane City Council 1965 Land Use Plan as 'service station'. Land use cannot be confirmed due to poor image quality.	1960
107	153.025 -27.437 Decimal Degrees	Lots 5 RP805240, Lots 0-8 BUP10328, Lot 5 RP172278, Lot 4 RP187268, Lots 1-3 RP58445, BUP8919, Lot 1 SP146479	Possible Notifiable Activity 'wood treatment or preservation'. Land use identified from the Brisbane City Council 1965 Land Use Plan as 'Brett and Co Sawmill'.	1960
108	153.026 -27.442 Decimal Degrees	Lots 383-407 RP18524	Possible Notifiable Activity 'petroleum product or oil storage'. Land use identified from the Brisbane City Council 1965 Land Use Plan as 'Brisbane City Council depot'. Fuel possibly stored onsite.	1960
109	153.029 -27.443 Decimal Degrees	Lots 1-2 RP155360, Lots 53 and 55-56 and 67 RP80002, Lots 55-56 RP18524, Lot 1 RP155421	Possible Notifiable Activity 'wood treatment or preservation'. Land use identified from the Brisbane City Council 1965 Land Use Plan as 'sawmill and timber yard'.	1960
110	153.031 -27.438 Decimal Degrees	Lots 1 and 100 RP188583	Possible Notifiable Activity 'service station' or 'engine reconditioning works'. Land use identified from the Brisbane City Council 1965 Land Use Plan as 'garage and service station'.	1960

Property number	Coordinates	Extrapolated property description	Notifiable activity/ land use description	Year identified
111	153.027 -27.444 Decimal Degrees	Lots 83 and 85 RP9846	Possible Notifiable Activity 'foundry works' or 'metal treatment or coating'. Land use identified from the Brisbane City Council 1965 Land Use Plan as 'plating workshop and foundry'.	1960
112	153.042-27.442 Decimal Degrees	Lot 1 RP137118, Lot 2 RP211207, Lot 24 RP9382, Lots 0-2 GTP1501, Lots 1-2 RP181402	Possible Notifiable Activity 'chemical storage'. Land use identified from the Brisbane City Council 1965 Land Use Plan as 'J Kitchen Soap Works'.	1960
113	153.045-27.440 Decimal Degrees	Lot 1 RP194245	Possible Notifiable Activity 'service station' or 'engine reconditioning works'. Land use identified from the Brisbane City Council 1965 Land Use Plan as 'garage'.	1960
114	153.043-27.445 Decimal Degrees	Lots 17-18 RP9348	Possible Notifiable Activity 'foundry works'. Land use identified from the Brisbane City Council 1965 Land Use Plan as 'brass foundry'.	1960
115	153.045-27.444 Decimal Degrees	Lot 0 SP101175, Lot 901 SP101176, SP101175, SP101177, SP101179, SP101181, Lots 902-903 SP101178	Possible Notifiable Activity 'petroleum product or oil storage'. Land use identified from the Brisbane City Council 1965 Land Use Plan as 'Shell Oil Wharves'.	1960
116	153.042-27.450 Decimal Degrees	Lot D SP163244, Lots J, M, K, E, I, G, H, I, F SP163117, Lots 0, 1 and 2 SP179283, Lot 4 SP163347, Lot 7 SP229899	Possible Notifiable Activity 'asbestos manufacture or disposal'. Land use identified from the Brisbane City Council 1965 Land Use Plan as 'J Hardie and Co'.	1960
117	153.045-27.450 Decimal Degrees	Lot 1 SP229899	Possible Notifiable Activity 'petroleum product or oil storage'. Land use identified from the Brisbane City Council 1965 Land Use Plan as 'Vacuum oil depot'.	1960
118	153.043-27.449 Decimal Degrees	Lot 1 SP214235	Possible Notifiable Activity 'wood treatment or preservation'. Land use identified from the Brisbane City Council 1965 Land Use Plan as 'Brown and Broad Sawmill'.	1960

Property number	Coordinates	Extrapolated property description	Notifiable activity/ land use description	Year identified
119	153.039-27.448 Decimal Degrees	Lots 6-8 RP10115	Possible Notifiable Activity 'paint manufacture or formulation'. Land use identified from the Brisbane City Council 1965 Land Use Plan as 'Queensland Paint and Varnish Co'.	1960
120	153.042-27.452 Decimal Degrees	Lots 2and3 RP102661, Lots 56 and 60 RP9287	Possible Notifiable Activity 'dry cleaning'. Land use identified from the Brisbane City Council 1965 Land Use Plan as 'dry cleaners'.	1950
121	153.038-27.452 Decimal Degrees	Lot 2 SP185367	Possible Notifiable Activity 'engine reconditioning works'. Land use identified from the Brisbane City Council 1965 Land Use Plan as 'motor assembly'.	1950
122	153.012-27.457 Decimal Degrees	Lot 1 RP181929	Possible Notifiable Activity 'service station' or 'engine reconditioning works'. Land use identified from the Brisbane City Council 1965 Land Use Plan as 'garage'.	1950
123	153.012-27.458 Decimal Degrees	Lot 1 RP805875	Possible Notifiable Activity 'service station' or 'engine reconditioning works'. Land use identified from the Brisbane City Council 1965 Land Use Plan as 'garage'.	1950
124	153.008-27.464 Decimal Degrees	Lot 5 RP54349	Possible Notifiable Activity 'engine reconditioning works'. Land use identified from the Brisbane City Council 1965 Land Use Plan as 'motor mechanic'.	1960
125	153.036-27.460 Decimal Degrees	MSP106324, Lot 3 MCP106259	Possible Notifiable Activity 'petroleum product or oil storage'. Land use identified from the Brisbane City Council 1965 Land Use Plan as 'brewery'.	1960
126	153.007-27.467 Decimal Degrees	Lot 1 SP135464	Possible Notifiable Activity 'engine reconditioning works'. Land use identified from the Brisbane City Council 1965 Land Use Plan as 'International Harvester Co garage'.	1950
127	153.008-27.467 Decimal Degrees	Lot 2 RP105530	Possible Notifiable Activity 'engine reconditioning works'. Land use identified from the Brisbane City Council 1965 Land Use Plan as 'motor mechanic'.	1950

Property number	Coordinates	Extrapolated property description	Notifiable activity/ land use description	Year identified
129	153.008 -27.476 Decimal Degrees	Lot 0 BUP103492	Possible Notifiable Activity 'asbestos manufacture or disposal'. Land use identified from the Brisbane City Council 1965 Land Use Plan as 'fibrous plasterer'.	1960
130	153.008 -27.476 Decimal Degrees	Lot 1 SP127105	Possible Notifiable Activity 'paint manufacture or formulation'. Land use identified from the Brisbane City Council 1965 Land Use Plan as 'Spartan Paints'.	1960
131	153.008 -27.476 Decimal Degrees	Lots 11-18 RP10779, Lot 16 RP10778, Lots 1-4 BUP106673, Lot 1 RP54411	Possible Notifiable Activity 'wood treatment or preservation'. Land use identified from the Brisbane City Council 1965 Land Use Plan as 'timber yard'.	1950
132	153.012 -27.476 Decimal Degrees	Lot 1 RP53570	Possible Notifiable Activity 'engine reconditioning works'. Land use identified from the Brisbane City Council 1965 Land Use Plan as 'garage'.	1950
133	153.019 -27.483 Decimal Degrees	Lot 1 RP117268	Possible Notifiable Activity 'engine reconditioning works' or 'service station'. Land use identified from the Brisbane City Council 1965 Land Use Plan as 'garage and service station'.	1950
134	153.026 -27.483 Decimal Degrees	Lot 19 RP11633	Possible Notifiable Activity 'dry cleaning'. Land use identified from the Brisbane City Council 1965 Land Use Plan as 'dry cleaner'.	1960
135	153.039 -27.481 Decimal Degrees	Lot 19 RP11420	Possible Notifiable Activity 'engine reconditioning works' or 'service station'. Land use identified from the Brisbane City Council 1965 Land Use Plan as 'garage and service station'.	1960
136	153.045 -27.479 Decimal Degrees	Lot 80 RP11010	Possible Notifiable Activity 'engine reconditioning works'. Land use identified from the Brisbane City Council 1965 Land Use Plan as 'garage'.	1960
138	153.039 -27.490 Decimal Degrees	Lot 0 BUP9750	Possible Notifiable Activity 'engine reconditioning works'. Land use identified from the Brisbane City Council 1965 Land Use Plan as 'garage'.	

Property number	Coordinates	Extrapolated property description	Notifiable activity/ land use description	Year identified
139	153.040 -27.491 Decimal Degrees	Lot 1 RP136244	Possible Notifiable Activity 'service station'. Land use identified from the Brisbane City Council 1965 Land Use Plan as 'fuel depot'.	1960
140	153.045 -27.493 Decimal Degrees	Lot 1 RP227678	Possible Notifiable Activity 'dry cleaning'. Land use identified from the Brisbane City Council 1965 Land Use Plan as 'laundry'.	1960
141	153.042 -27.497 Decimal Degrees	Lots 4-6 RP12298	Possible Notifiable Activity 'engine reconditioning works'. Land use identified from the Brisbane City Council 1965 Land Use Plan as 'motor engineer'. Site has been redeveloped as part of the Eastern Busway Project.	1960
142	153.042 -27.493 Decimal Degrees	Lot 97 and 100 RP11919	Possible Notifiable Activity 'foundry works'. Land use identified from the Brisbane City Council 1965 Land Use Plan as 'Amo's Foundry'.	1960
143	153.042 -27.493 Decimal Degrees	Lot 8 RP11960	Possible Notifiable Activity 'foundry works' or 'metal treatment or Coating'. Land use identified from the Brisbane City Council 1965 Land Use Plan as 'cooperage'.	1960
144	153.023 -27.491 Decimal Degrees	Lots 46-47 RP12134	Possible Notifiable Activity 'wood treatment or preservation'. Land use identified from the Brisbane City Council 1965 Land Use Plan as 'sawmill'.	1960
145	153.005 -27.514 Decimal Degrees	Lots 1-21 RP86941, Lots 22-23 RP87628, Lots 1-14, 16-21, 24-36 and 101 SP108381, Lot 2 SP153125	Possible Notifiable Activity 'defence establishments or training areas' or 'explosives production or storage'. Land use identified from the Brisbane City Council 1965 Land Use Plan as 'army training depot'. Site has since been redeveloped to residential housing.	1960
146	153.034 -27.505 Decimal Degrees	Lot 2 SP104871, Lot 71 SP112861, Lots 0 BUP11511, Lot 4 RP75510	Possible Notifiable Activity 'asbestos manufacture or disposal'. Land use identified from the Brisbane City Council 1965 Land Use Plan as 'fibrous plaster works'.	1960
147	153.031 -27.511 Decimal Degrees	Lot 9 RP41661, Lot 8 RP37497	Possible Notifiable Activity 'service station'. Land use identified from the Brisbane City Council 1965 Land Use Plan as 'service station'.	1960

Property number	Coordinates	Extrapolated property description	Notifiable activity/ land use description	Year identified
148	153.028 -27.519 Decimal Degrees	Lot 3 RP40875	Possible Notifiable Activity 'engine reconditioning works' or 'service station'. Land use identified from the Brisbane City Council 1965 Land Use Plan as 'garage and service station'.	1960
149	153.027 -27.520 Decimal Degrees	Lot 4 RP37774	Possible Notifiable Activity 'engine reconditioning works' or 'service station'. Land use identified from the Brisbane City Council 1965 Land Use Plan as 'garage and service station'. Site is currently open space.	1960
150	153.016 -27.529 Decimal Degrees	Lots 1-2 RP37623	Possible Notifiable Activity 'wood treatment or preservation'. Land use identified from the Brisbane City Council 1965 Land Use Plan as 'timber yard'.	1960
151	153.019 -27.528 Decimal Degrees	Lot 11 RP45568	Possible Notifiable Activity 'engine reconditioning works' or 'service station'. Land use identified from the Brisbane City Council 1965 Land Use Plan as 'motor trimmers and body works'.	1960
152	153.024 -27.533 Decimal Degrees	Lot 73 RP54159	Possible Notifiable Activity 'engine reconditioning works' or 'service station'. Land use identified from the Brisbane City Council 1965 Land Use Plan as 'motor mechanic'.	1960
153	153.008 -27.546 Decimal Degrees	Lots 43-44 RP37480	Possible Notifiable Activity 'asbestos manufacture or disposal'. Land use identified from the Brisbane City Council 1965 Land Use Plan as 'plaster manufacture' and Lot 1 RP149614 as Property also includes area marked as 'engineering workshop'.	1970-1972
154	153.008 -27.550 Decimal Degrees	Lot 1 RP161546	Possible Notifiable Activity 'engine reconditioning works'. Land use identified from the Brisbane City Council 1965 Land Use Plan as 'McGrath Motors'.	1970-1972
155	153.039 -27.559 Decimal Degrees	Lots 10-14 SP170677	Possible Notifiable Activity 'wood treatment or preservation'. Land use identified from the Brisbane City Council 1965 Land Use Plan as 'timber mill and yard'.	1960

Property number	Coordinates	Extrapolated property description	Notifiable activity/ land use description	Year identified
156	153.014-27.561 Decimal Degrees	Lot 3 SP172150	Possible Notifiable Activity 'engine reconditioning works'. Land use identified from the Brisbane City Council 1965 Land Use Plan as 'motor works'.	1970-1972
157	153.035-27.567 Decimal Degrees	Lot 7 SP129452	Possible Notifiable Activity 'wood treatment or preservation'. Land use identified from the Brisbane City Council 1965 Land Use Plan as 'sawmill'.	1970-1972
158	153.039 -27.569 Decimal Degrees	Lots 204-205 RP887528, Lot 15 RP225681, Lots 163-167, 168-177 and 180-191 RP896052, Lots 150-162, 192 and 200-203 RP896051, Lot 306 RP896050, Lots 240-243, 255 and 259-273 RP897307, Lots 82-86 SL10956, Lots 11-14 RP225681, Lots 245-250 and 274-279 RP897306, Lots 1 and 8 B31991, Lot 7 RP218807, Lots 232-238 RP897305, Lots 37-49 RP887518, Lots 50-62 RP887517, Lot 61 RP887516	Possible Notifiable Activity 'defence establishment or training areas' or 'explosives production or storage'. Land use identified from the Brisbane City Council 1965 Land Use Plan as 'Defence Department area'. The site has since been redeveloped to residential housing.	1960
159	153.042-27.562 Decimal Degrees	Lots 61-62 RP38134	Possible Notifiable Activity 'wood treatment or preservation'. Land use identified from the Brisbane City Council 1965 Land Use Plan as 'sawmill'.	1970-1972
160	153.045 -27.439 Decimal Degrees	Lots 29-30 RP33460	Possible Notifiable Activity 'landfill'. A layer of fill materials has been identified across the whole property, raising the height of the land relative to the surrounding properties by approximately 0.5m.	25/08/2010
161	153.039 -27.442 Decimal Degrees	Lot 1 RP100415	Possible Notifiable Activity 'service stations'. Layout of property indicates that the site may have once operated as a service station. No bowsters or other indicators of petroleum storage were able to be identified in the forecourt area during the drive-by.	25/08/2010

Property number	Coordinates	Extrapolated property description	Notifiable activity/ land use description	Year identified
163	153.041 -27.481 Decimal Degrees	Lot 59 RP856345	Possible Notifiable Activity 'wood treatment and preservation'. Property has timber stored in large sheds. It is unclear whether chemical storage of timber treatment chemicals occurs on the property.	27/08/2010
164	153.011 -27.472 Decimal Degrees	Lot 2 SP223966	Possible Notifiable Activity 'scrap yards'. Property appears to be used for storage of recyclable metals and stockpiled glass.	27/08/2010
165	153.008 -27.464 Decimal Degrees	Lot 10 RP54349	Possible Notifiable Activity 'printing'. The type of printing undertaken at the site is not clear.	27/08/2010
166	153.011 -27.555 Decimal Degrees	Lot 37 SP203158	Possible Notifiable Activity 'landfill'. Topography of the site indicates that stockpiled material was once placed here, raising the height of the land relative to the surrounding properties by a maximum of approximately 2.5m. The current use of the property is as an easement between roadways.	01/09/2010
168	153.029 -27.562 Decimal Degrees	Lots 1-2 and 4 RP72089, Lots 5-6 RP131696, Lots 1-4 RP897094	Possible Notifiable Activity 'landfill'. Stockpiled material from different sources has been placed on the property. A subsequent review of current aerial imagery indicated that there is evidence of refuse stored onsite.	01/09/2010
169	153.033 -27.570 Decimal Degrees	Lot 91 RP203270	Possible Notifiable Activity 'chemical storage'. The property is currently being used as a truck wash and maintenance bay. There is the potential for the use of solvents, degreasers and other detergents to be stored onsite or not be fully captured by interceptors after use.	01/09/2010
170	153.039 -27.564 Decimal Degrees	Lot 12 SP128627 & Lot A SP128627	Possible Notifiable Activity 'service stations'. The property is currently being used as an operational service station.	01/09/2010
171	153.038 -27.562 Decimal Degrees	Lot 1 RP909106	Possible Notifiable Activity 'landfill'. Topography of the site indicates that stockpiled material was once placed here, raising the height of the land relative to the surrounding properties by a maximum of approximately 1.0m. The property is currently being used as parkland and public open space.	01/09/2010

Property number	Coordinates	Extrapolated property description	Notifiable activity/ land use description	Year identified
172	153.012 -27.542 Decimal Degrees	N/A (easement)	Possible Notifiable Activity 'landfill'. Topography of the site indicates that stockpiled material was once placed here, raising the height of the land relative to the surrounding properties by a maximum of approximately 1.0m. Material appears to have been used to fill a small watercourse. The current use of the property is as an easement between roadways.	01/09/2010
173	153.012 -27.528 Decimal Degrees	Lots 6 and 7 RP114498	Possible Notifiable Activity 'defence establishments or training areas' or 'petroleum product or oil storage'. There is an aircraft hangar onsite, which may indicate that the property was used during wartimes for storage or maintenance of planes.	01/09/2010
174	153.004 -27.528 Decimal Degrees	Lot 1 RP73725	Possible Notifiable Activity 'printing'. The type of printing undertaken at the site is not clear.	01/09/2010
175	153.027 -27.489 Decimal Degrees	Lot 5 RP119308	Possible Notifiable Activity 'dry cleaning'. Property consists of shop front, and appears to have laundry facility onsite.	07/09/2010
176	153.031 -27.459 Decimal Degrees	Lot 2 RP170912	Possible Notifiable Activity 'service stations'. Configuration of the property indicates that this was once a service station. Property currently appears to be vacant.	07/09/2010

Notes:

* - SKM Aurecon JV 2004

** - SKM Connell-Wagner JV 2008

E.3 Geotechnical investigations

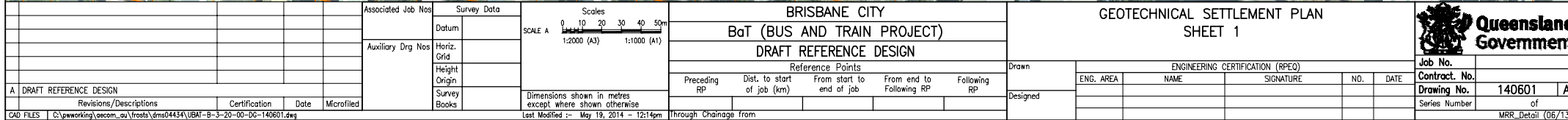
Table E-4 Geotechnical risks and construction issues

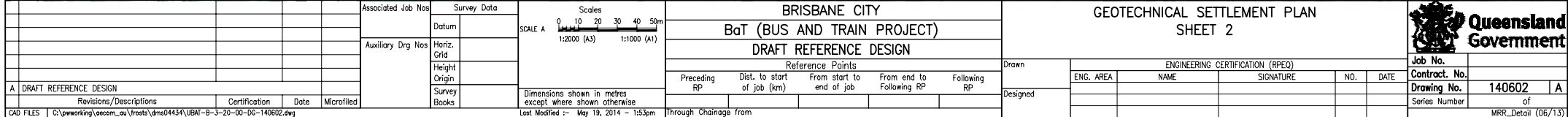
Project section	Geology	Excavation types	Geotechnical risks	Construction issues
Southern Section	Mixed ground: fill, alluvium, residual soil, extremely weathered Brisbane Tuff	At grade works Open cut Cut and cover Mined tunnel	Potential for contaminated ground Potential for elevated ground movements associated with soft and mixed ground type Potential for high groundwater table/artesian groundwater pressures.	Construction near live rail. Soil nail batters or retaining structures may be required. Temporary and permanent support of mixed/soft ground in tunnel crown beneath the live rail. Stability of bored piles Dewatering of excavations
TBM Tunnel	Mixed ground: Brisbane Tuff, Aspley siltstone/sandstone/conglomerate	TBM launch shaft TBM tunnel	High groundwater Ground movements or loss associated with mixed ground, elevated potential for ground issues.	Dewatering of excavations Support of mixed/soft ground in the tunnel crown Potential for variability associated with Tuff, Tuffaceous sediments.
	Brisbane Tuff	TBM tunnel	Mixed ground, mixed face conditions. Elevated potential for ground loss.	Potential for variability associated with Tuff, Tuffaceous sediments and Tuff/Neranleigh-Fernvale Beds (NFB) contact
	NFB: Arenite, phyllite, metagreywacke, metabasalt	TBM tunnel	Ground-borne noise and vibration associated with TBM passage.	High cutter wear rates associated with high to very high strength rock (presence of quartz rich and silicified rock).
	Inferred as Brisbane Tuff underlain by Aspley siltstone, NFB.	TBM tunnel	Uncertainty regarding the nature and extent of the unconformity.	High cutter wear rates associated with high to very high strength rock (presence of quartz rich and silicified rock).
Woolloongabba Station	Mixed ground: Aspley siltstone, sandstone, conglomerate; Brisbane Tuff, NFB.	Station cavern Cut and cover. Station box.	Uncertainty regarding nature of Aspley-Tuff-NFB contact. Ground-borne noise associated with TBM passage.	Potential low cover over the cavern section. Variable ground associated with the Aspley-Tuff-NFB interfaces. Stability of bored piles. Excavatability of high

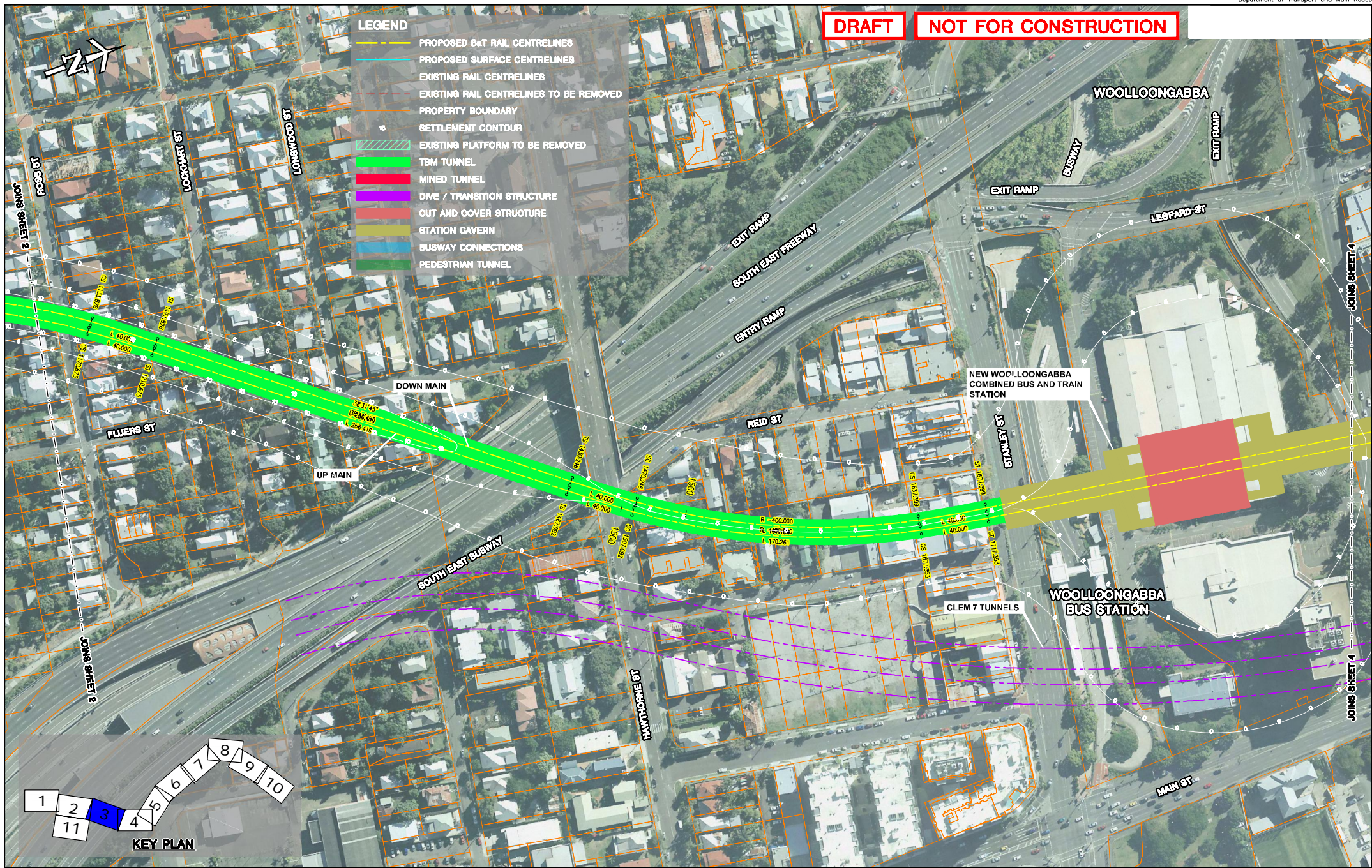
Project section	Geology	Excavation types	Geotechnical risks	Construction issues
				strength rock. Dewatering of excavation.
TBM Tunnel	Mixed ground: Aspley siltstone, sandstone, conglomerate; Brisbane Tuff, NFB.	TBM tunnel Mined low point sump	Ground-borne noise associated with TBM passage. Potential for low rockhead near the tunnel crown. Potential for paleo-channel and deep rockhead levels to extend beneath Gardens Point.	Variable ground associated with Tuff/Aspley contact. Groundwater inflow. High cutter wear rates associated with high to very high strength rock (presence of quartz rich and silicified rock).
	Inferred as fill over the NFB.	TBM tunnel	Uncertainty regarding the nature of the Aspley-NFB contact. Uncertainty regarding extents of high-very high strength rock bands.	Variable ground associated with Aspley-NFB contact. High cutter wear rates associated with high to very high strength rock (presence of quartz rich and silicified rock).
George St Station	Inferred as fill over the NFB.	Station cavern. Cut and cover station box.	Settlement of adjacent structures related to groundwater drawn down. Uncertainty regarding extent and nature of faults.	Stability of bored piles. Excavatability of high strength rock. Dewatering of excavations. Orientation, extent and nature of faults.
TBM Tunnel	NFB: Arenite, phyllite, metagreywacke, metabasalt	TBM tunnel	Ground-borne noise and vibration associated with the TBM passage. Typically deeper weathering profile associated with pre-development line of drainage.	High cutter wear rates associated with high to very high strength rock (presence of quartz rich and silicified rock). Intersection of faults resulting in groundwater ingress. Low rockhead cover to S1 sewer tunnel.
Roma Street Station	NFB: Arenite, phyllite, metagreywacke, metabasalt	Station cavern	Uncertainty regarding extent and nature of faults.	Excavatability of high strength rock.
	Fill and alluvium over the NFB	Station cavern. Cut and cover station box.	Uncertainty regarding extent and nature of faults. Ground-borne noise and vibration associated	Possible persistent shears in cavern. Excavatability of high strength rock.


Project section	Geology	Excavation types	Geotechnical risks	Construction issues
			with the TBM passage.	
TBM Tunnel	Inferred as NFB: Arenite, phyllite, metagreywacke, metabasalt.	TBM tunnel	Uncertainty regarding the extent and nature of faults. Potential for low rockhead near tunnel crown. Ground-borne noise and vibration associated with TBM passage.	High cutter wear rates associated with high to very high strength rock (presence of quartz rich and silicified rock). Groundwater inflow associated with faults/shears.
Northern Section	Fill over residual soil and the NFB.	Cut and cover Open cut At grade works	Potential for elevated ground movements associated with mixed ground. Potential for contaminated ground.	High cutter wear rates associated with high to very high strength rock (presence of quartz rich and silicified rock). Groundwater inflow associated with faults/shears Shallow cuttings. Soil nail batters or retaining structures may be required. Earthworks near live rail.

E.4 Settlement mapping







				Associated Job Nos		Survey Data		<div>01020304050m 1:2000 (A3) 1:1000 (A1)</div>		BRISBANE CITY				GEOTECHNICAL SETTLEMENT PLAN				 Queensland Government	
				Auxiliary Drg Nos		Datum				BaT (BUS AND TRAIN PROJECT)				SHEET 3					
						Horiz. Grid				DRAFT REFERENCE DESIGN								Job No.	
						Height Origin				Reference Points								Contract No.	
						Survey Books				Preceding RP				Drawn				Drawing No.	
A DRAFT REFERENCE DESIGN								Dimensions shown in metres except where shown otherwise		Dist. to start of job (km)				ENGINEERING CERTIFICATION (RPEO)				Series Number	
Revisions/Descriptions								Last Modified :- May 14, 2014 - 3:38pm		From start to end of job				ENG. AREA				of	
Certification								Through Chainage from		From end to Following RP				NAME				MRR_Detail (06/13)	
Date										Following RP				SIGNATURE					
Microfilm														NO.					
CAD FILES														DATE					
C:\pwworking\qecm_au\trats\dms04434\UBAT-B-3-20-00-DG-140603.dwg																			

DRAFT**NOT FOR CONSTRUCTION**

A	DRAFT REFERENCE DESIGN				
	Revisions/Descriptions	Certification	Date	Microfitted	

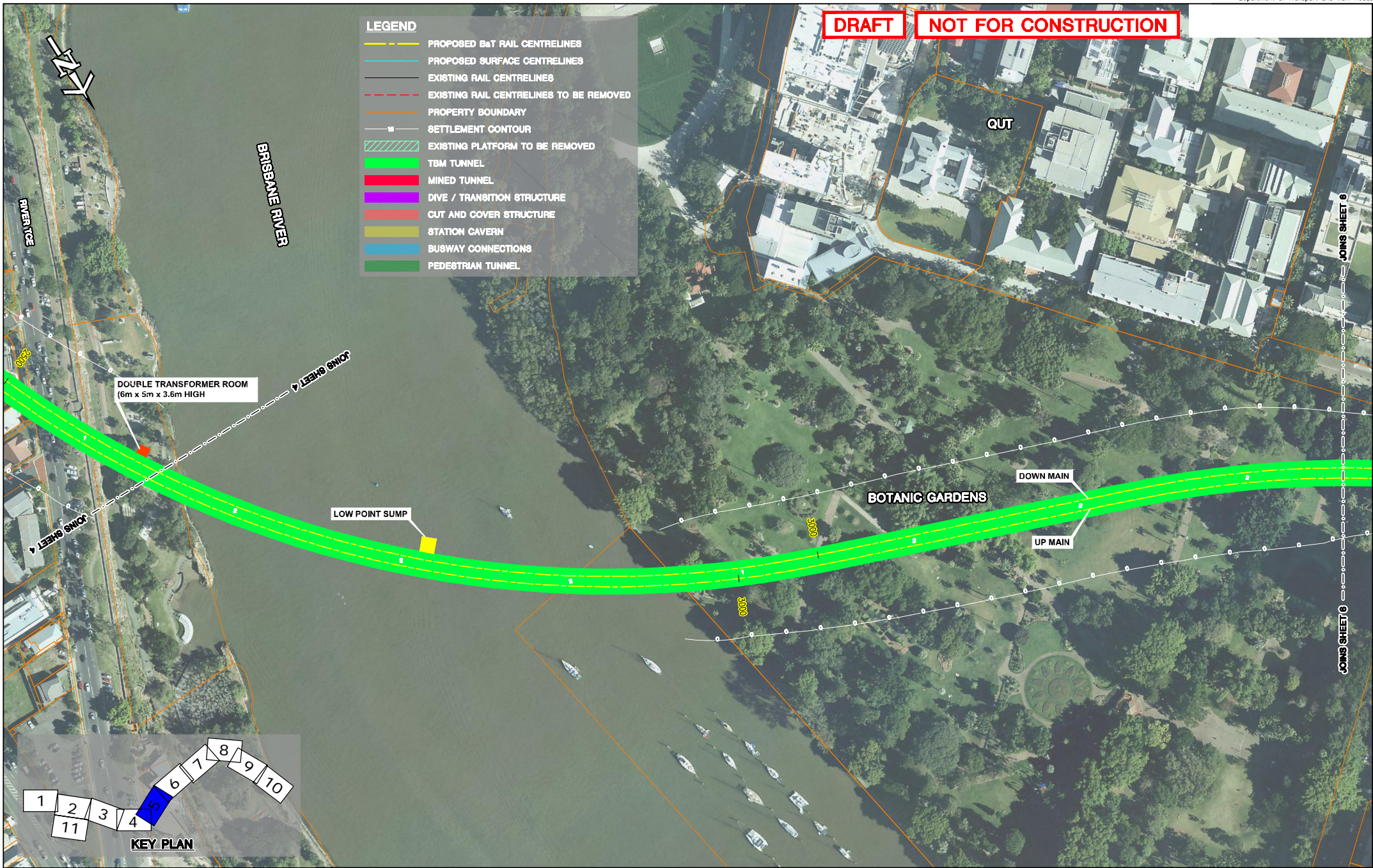
Associated Job Nos	Survey Data
	Datum
Auxiliary Drg Nos	Horiz. Grid
	Height Origin
	Survey Books


Scales
SCALE A 0 10 20 30 40 50m
1:2000 (A3) 1:1000 (A1)
Dimensions shown in metres except where shown otherwise
Last Modified :- May 14, 2014 - 3:47pm

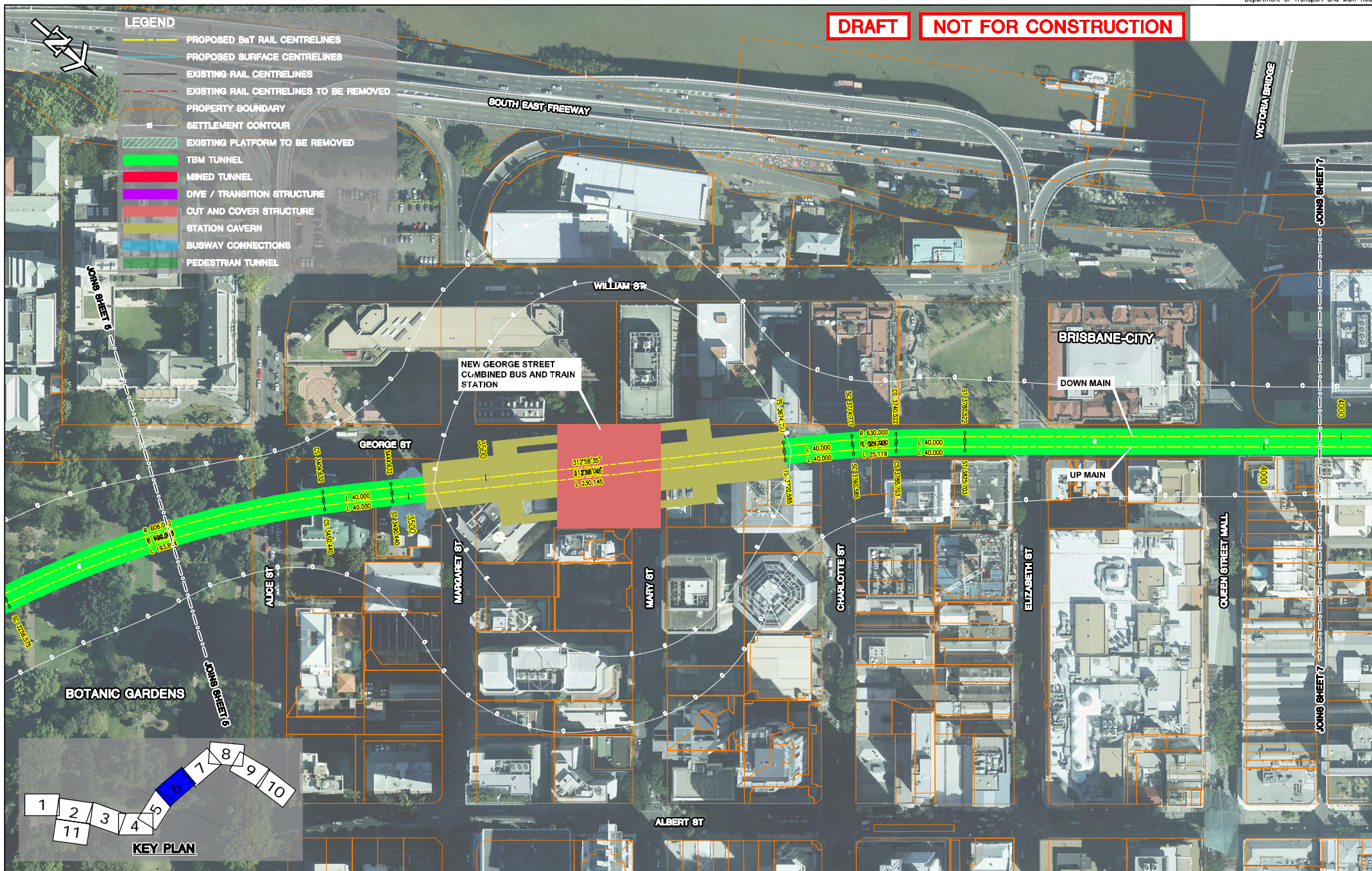
BRISBANE CITY	Drawn
B&T (BUS AND TRAIN PROJECT)	Designed
DRAFT REFERENCE DESIGN	
Reference Points	
Preceding RP	Dist. to start of job (km)
	From start to end of job
	From end to Following RP
	Following RP


GEOTECHNICAL SETTLEMENT PLAN					
SHEET 4					
Drawn	ENGINEERING CERTIFICATION (RPEO)				
	ENG. AREA	NAME	SIGNATURE	NO.	DATE
Designed					

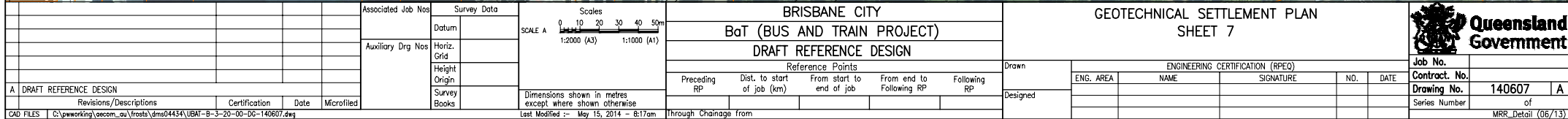
Queensland Government	Job No.
	Contract No.
Drawing No.	140604
Series Number	of
	MRR_Detail (06/13)

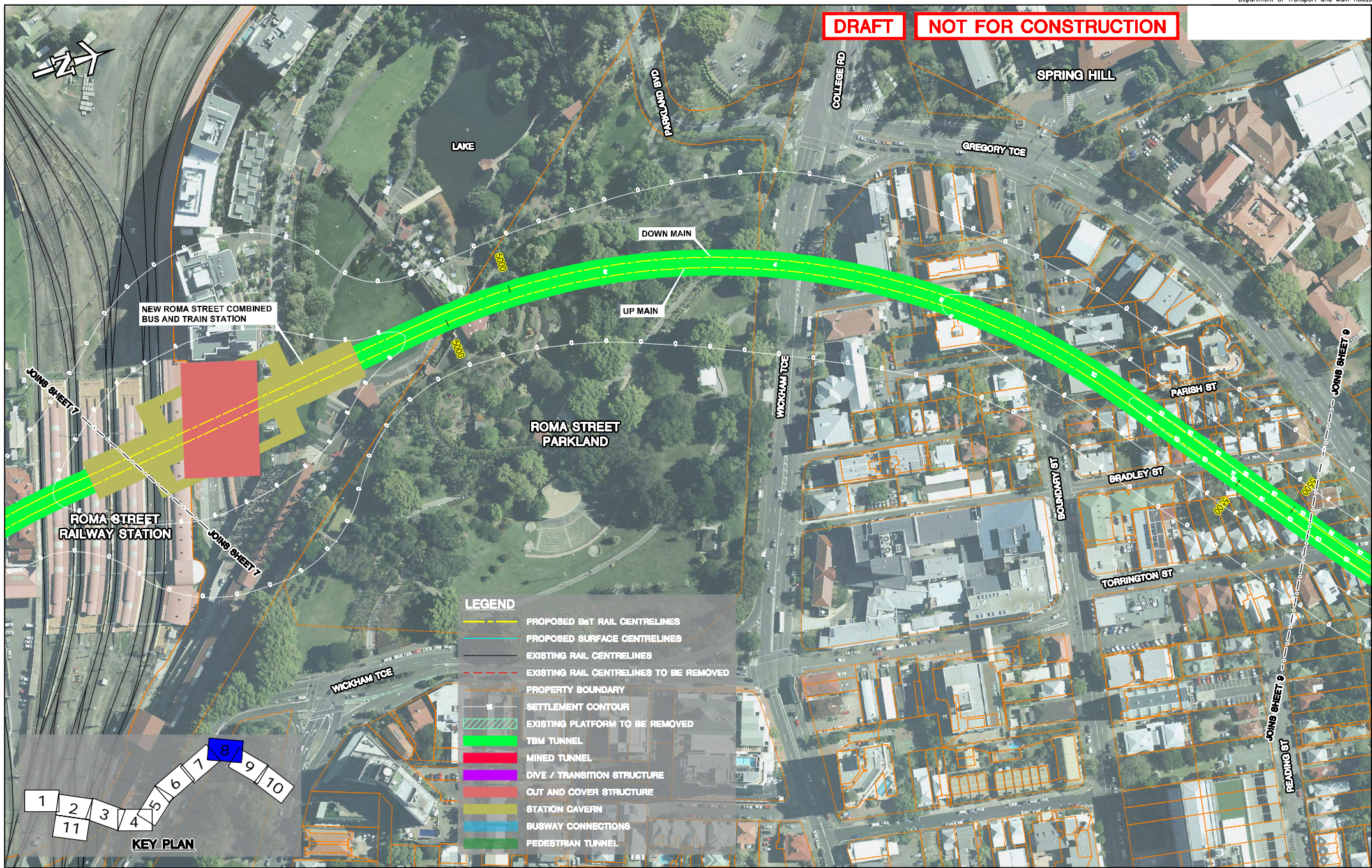


				Associated Job Nos		Survey Data		<div><div>Scales</div><div>01020304050m</div><div>SCALE A 1:2000 (A3) 1:1000 (A1)</div></div>		BRISBANE CITY				GEOTECHNICAL SETTLEMENT PLAN							
										BaT (BUS AND TRAIN PROJECT)				SHEET 5							
				Auxiliary Drg Nos		Datum				DRAFT REFERENCE DESIGN								Job No.			
						Horiz. Grid				Reference Points				Drawn				ENGINEERING CERTIFICATION (RPEO)			
						Height Origin				Preceding RP				Dist. to start of job (km)				From start to end of job			
						Survey Books				From end to Following RP				Designed				SIGNATURE			
A DRAFT REFERENCE DESIGN										Dimensions shown in metres except where shown otherwise								NO.			
										Last Modified :- May 14, 2014 - 4:10pm				Through Chainage from				DATE			
Revisions/Descriptions				Certification		Date		Microfilmed										Drawing No.			
CAD FILES C:\pwworking\secom.au\projects\dmr04434\UBAT-B-3-20-00-DG-140605.dwg																		Series Number			
																		of			
																		MRR_Detail (06/13)			

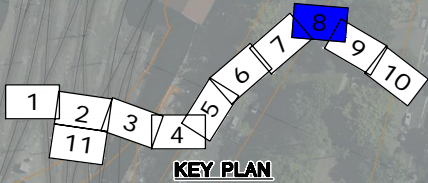
DRAFT**NOT FOR CONSTRUCTION**


				Associated Job Nos		Survey Data		<div>Scale A</div> <div><div>01020304050m</div><div>1:2000 (A3)1:1000 (A1)</div></div>		BRISBANE CITY				GEOTECHNICAL SETTLEMENT PLAN						<div></div> <div>Queensland Government</div>															
						Datum				BaT (BUS AND TRAIN PROJECT)				SHEET 6																					
				Auxiliary Drg Nos		Horiz. Grid				DRAFT REFERENCE DESIGN																									
						Height Origin				Reference Points																									
						Survey Books		Dimensions shown in metres except where shown otherwise		Preceding RP				Dist. to start of job (km)		From start to end of job		From end to Following RP		Following RP		Drawn		ENGINEERING CERTIFICATION (RPEC)						Job No.					
A DRAFT REFERENCE DESIGN																						Designed		ENG. AREA		NAME		SIGNATURE		NO.		DATE		Contract No.	
Revisions/Descriptions				Certification		Date		Microfilmed																								Drawing No.			
CAD FILES				C:\pwworking\qecm_au\trats\dms04434\UBAT-B-3-20-00-DG-140606.dwg																												140606			
																														Series Number					
																														of					
																														MRR_Detail 06/13					





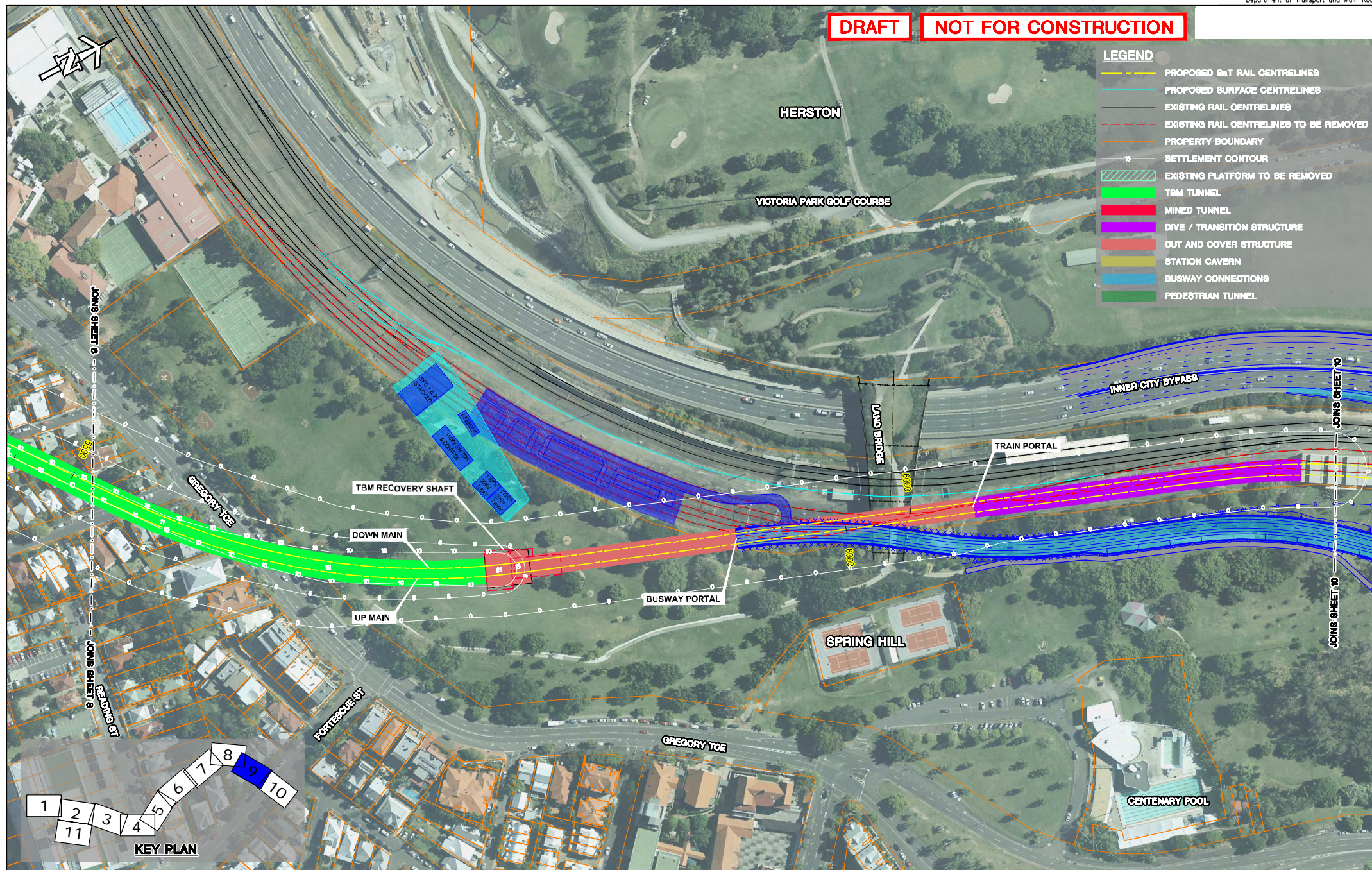
- LEGEND**
- PROPOSED B&T RAIL CENTRELINES
 - PROPOSED SURFACE CENTRELINES
 - EXISTING RAIL CENTRELINES
 - EXISTING RAIL CENTRELINES TO BE REMOVED
 - PROPERTY BOUNDARY
 - SETTLEMENT CONTOUR
 - EXISTING PLATFORM TO BE REMOVED
 - TBM TUNNEL
 - MINED TUNNEL
 - DIVE / TRANSITION STRUCTURE
 - CUT AND COVER STRUCTURE
 - STATION CAVERN
 - BUSWAY CONNECTIONS
 - PEDESTRIAN TUNNEL





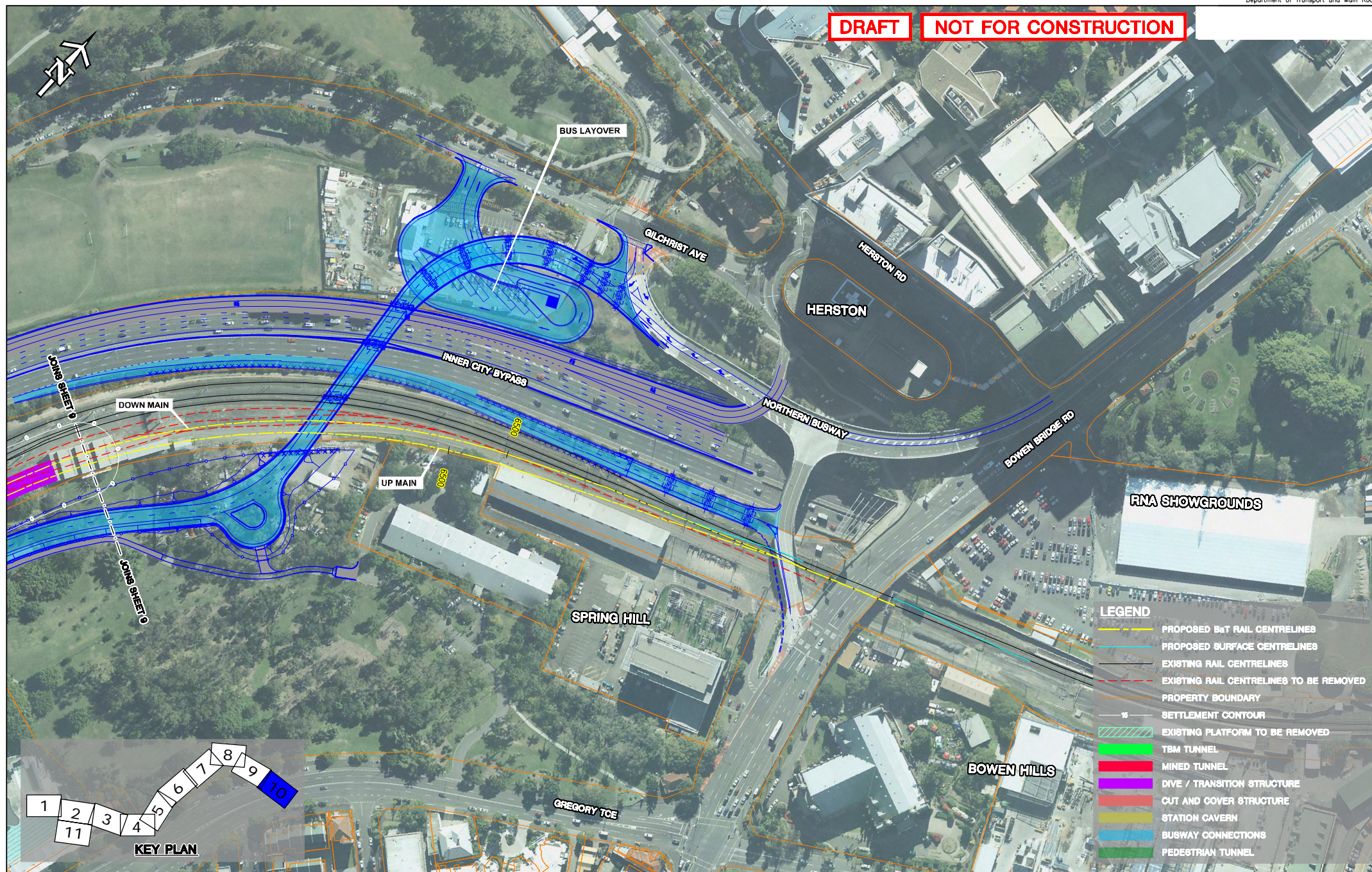
				Associated Job Nos	Survey Data		Scales				BRISBANE CITY				GEOTECHNICAL SETTLEMENT PLAN					Job No.	Contract No.	Drawing No.	Series Number																																																																																																																																																																																																																																																																																																																																																																																																																																																																																																																																																																																																																																																																																																																																																																																																																																																																																																																																																																																																																																																																																																																																																																																																																																																																																																																				
					Datum		SCALE A 0 10 20 30 40 50m 1:2000 (A3) 1:1000 (A1)				BaT (BUS AND TRAIN PROJECT)				SHEET 8																																																																																																																																																																																																																																																																																																																																																																																																																																																																																																																																																																																																																																																																																																																																																																																																																																																																																																																																																																																																																																																																																																																																																																																																																																																																																																																												
				Auxiliary Drg Nos	Horiz. Grid						DRAFT REFERENCE DESIGN																																																																																																																																																																																																																																																																																																																																																																																																																																																																																																																																																																																																																																																																																																																																																																																																																																																																																																																																																																																																																																																																																																																																																																																																																																																																																																																																
					Height Origin						Reference Points				ENGINEERING CERTIFICATION (RPEQ)																																																																																																																																																																																																																																																																																																																																																																																																																																																																																																																																																																																																																																																																																																																																																																																																																																																																																																																																																																																																																																																																																																																																																																																																																																																																																																																												
					Survey Books		Dimensions shown in metres except where shown otherwise				Preceding RP				Dist. to start of job (km)				From start to end of job				From end to Following RP				Following RP				Drawn	ENG. AREA	NAME	SIGNATURE	NO.	DATE	Contract No.	140608	A																																																																																																																																																																																																																																																																																																																																																																																																																																																																																																																																																																																																																																																																																																																																																																																																																																																																																																																																																																																																																																																																																																																																																																																																																																																																																																				
A DRAFT REFERENCE DESIGN																																																																																																																																																																																																																																																																																																																																																																																																																																																																																																																																																																																																																																																																																																																																																																																																																																																																																																																																																																																																																																																																																																																																																																																																																																																																																																																																											

DRAFT**NOT FOR CONSTRUCTION****LEGEND**

- PROPOSED B&T RAIL CENTRELINES
- PROPOSED SURFACE CENTRELINES
- EXISTING RAIL CENTRELINES
- EXISTING RAIL CENTRELINES TO BE REMOVED
- PROPERTY BOUNDARY
- SETTLEMENT CONTOUR
- EXISTING PLATFORM TO BE REMOVED
- TBM TUNNEL
- MINED TUNNEL
- DIVE / TRANSITION STRUCTURE
- CUT AND COVER STRUCTURE
- STATION CAVERN
- BUSWAY CONNECTIONS
- PEDESTRIAN TUNNEL

**KEY PLAN**

				Associated Job Nos		Survey Data		Scales		BRISBANE CITY				GEOTECHNICAL SETTLEMENT PLAN					Queensland Government																
				Datum				SCALE A 		BaT (BUS AND TRAIN PROJECT)				SHEET 9																					
				Auxiliary Drg Nos		Horiz. Grid		1:2000 (A3) 1:1000 (A1)		DRAFT REFERENCE DESIGN																									
A DRAFT REFERENCE DESIGN				Height Origin		Survey Books		Dimensions shown in metres except where shown otherwise		Reference Points				ENGINEERING CERTIFICATION (RPEO)																					
Revisions/Descriptions				Certification		Date		Microfilmed		Preceding RP		Dist. to start of job (km)		From start to end of job		From end to Following RP		Following RP		Drawn		ENG. AREA		NAME		SIGNATURE		NO.		DATE		Job No.		Contract No.	
CAD FILES C:\pwworking\qcom.au\trats\dms\04434\UBAT-B-3-20-00-DG-140609.dwg																				Designed												Drawing No. 140609		Series Number of	
								Last Modified :- May 15, 2014 - 8:40am																								MRR_Detail (06/13)			

DRAFT**NOT FOR CONSTRUCTION**

				Associated Job Nos	Survey Data		Scales		BRISBANE CITY		GEOTECHNICAL SETTLEMENT PLAN			
				Auxiliary Drg Nos			SCALE A		BaT (BUS AND TRAIN PROJECT)		SHEET 10			
							0 10 20 30 40 50m		DRAFT REFERENCE DESIGN					
							1:2000 (A3) 1:1000 (A1)		Reference Points		Drawn		ENGINEERING CERTIFICATION (RPEO)	
									Preceding RP		Designed		ENG. AREA	
									Dist. to start of job (km)				NAME	
									From start to end of job				SIGNATURE	
									From end to Following RP				NO.	
									Following RP				DATE	
A DRAFT REFERENCE DESIGN													Job No.	
Revisions/Descriptions													Contract No.	
Certification													Drawing No. 140610 A	
Date													Series Number of	
Microfilmed													MRR_Detail (06/13)	

CAD FILES | C:\pwworking\qcom_au\trats\dms04434\UBAT-B-3-20-00-DG-140610.dwg
Last Modified :- May 15, 2014 - 8:59am Through Chainage from