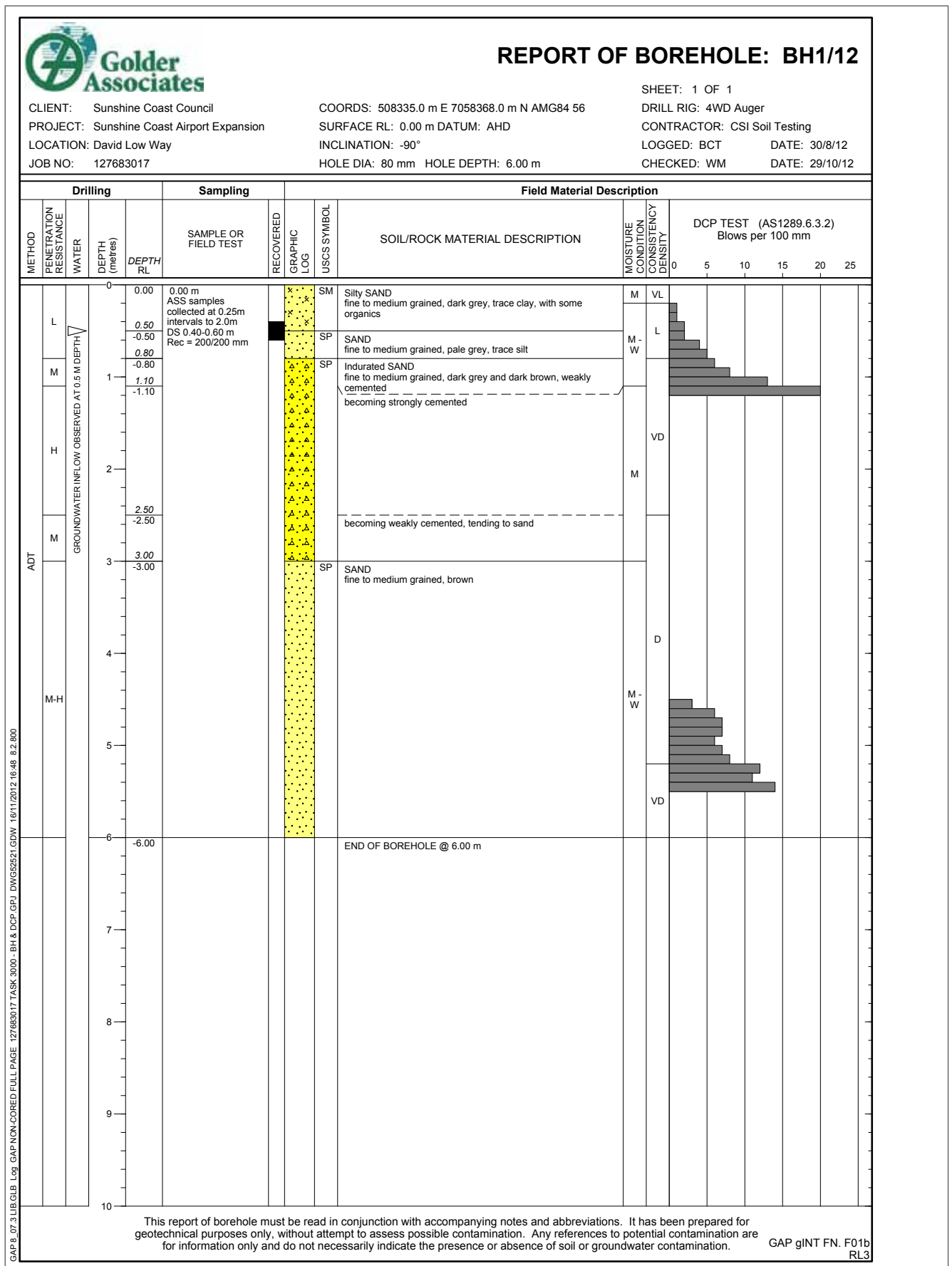


APPENDIX B3:H

Acid sulfate soil borehole reports



APPENDIX B3:H



REPORT OF BOREHOLE: BH3/12

CLIENT: Sunshine Coast Council
 PROJECT: Sunshine Coast Airport Expansion
 LOCATION: David Low Way
 JOB NO: 127683017

COORDS: 507763.0 m E 7058970.0 m N AMG84 56
 SURFACE RL: 0.00 m DATUM: AHD
 INCLINATION: -90°
 HOLE DIA: 80 mm HOLE DEPTH: 6.00 m

SHEET: 1 OF 1
 DRILL RIG: 4WD Auger
 CONTRACTOR: CSI Soil Testing
 LOGGED: BCT DATE: 27/8/12
 CHECKED: WM DATE: 29/10/12

Drilling			Sampling		Field Material Description																
METHOD	PENETRATION RESISTANCE	WATER	DEPTH (metres)	DEPTH RL	SAMPLE OR FIELD TEST	RECOVERED GRAPHIC LOG	USCS SYMBOL	SOIL/ROCK MATERIAL DESCRIPTION	MOISTURE CONDITION	CONSISTENCY	DENSITY	DCP TEST (AS1289.6.3.2) Blows per 100 mm									
												0	5	10	15	20	25				
ADT	L	GROUNDWATER INFLOW OBSERVED AT 0.70 M DEPTH	0.00	0.00	0.00 m ASS samples collected at 0.25m intervals to 2.0m DS 0.30-0.40 m Rec = 100/100 mm	[Graphic Log: Yellow with black dots]	SM SP	Silty SAND fine to medium grained, dark grey, trace of organics	M	L	MD		[DCP Test Bar: 0-2.00m]								
			0.10	0.30									[Graphic Log: Yellow with black triangles]	SP	Indurated SAND fine to medium grained, dark grey, weakly cemented	M	D		[DCP Test Bar: 0.30-0.80m]		
			0.30	0.80	[Graphic Log: Yellow with black triangles]	SP	becoming strongly cemented	M	D		[DCP Test Bar: 0.80-1.50m]										
			1.50	1.50							[Graphic Log: Yellow with black triangles]	SP							becoming dark brown and grey	M	D
			2.00	2.00	DS 2.20-2.40 m Rec = 200/200 mm	[Graphic Log: Yellow with black triangles]	SP	becoming weakly cemented	M	W			VD		[DCP Test Bar: 2.00-3.50m]						
3.50	3.50		[Graphic Log: Yellow with black triangles]	SM	Silty SAND fine to medium grained, yellow brown						M	L			MD		[DCP Test Bar: 3.50-4.50m]				
4.50	4.50																	[DCP Test Bar: 4.50-6.00m]			
			6.00	-6.00				END OF BOREHOLE @ 6.00 m													

GAP 8_07.3 LIB.GLB Log GAP NON-CORED FULL PAGE 127683017 TASK 3000 - BH & DCP.GPJ DWG52521.GDW 16/11/2012 16:48 8.2.800

This report of borehole must be read in conjunction with accompanying notes and abbreviations. It has been prepared for geotechnical purposes only, without attempt to assess possible contamination. Any references to potential contamination are for information only and do not necessarily indicate the presence or absence of soil or groundwater contamination. GAP gINT FN. F01b RL3

APPENDIX B3:H



REPORT OF BOREHOLE: BH4/12

CLIENT: Sunshine Coast Council
 PROJECT: Sunshine Coast Airport Expansion
 LOCATION: David Low Way
 JOB NO: 127683017

COORDS: 507811.0 m E 7059231.0 m N AMG84 56
 SURFACE RL: 0.00 m DATUM: AHD
 INCLINATION: -90°
 HOLE DIA: 80 mm HOLE DEPTH: 6.00 m

SHEET: 1 OF 1
 DRILL RIG: 4WD Auger
 CONTRACTOR: CSI Soil Testing
 LOGGED: BCT DATE: 27/8/12
 CHECKED: WM DATE: 29/10/12

Drilling			Sampling	Field Material Description																								
METHOD	PENETRATION RESISTANCE	WATER	DEPTH (metres)	DEPTH RL	SAMPLE OR FIELD TEST	RECOVERED GRAPHIC LOG	USCS SYMBOL	SOIL/ROCK MATERIAL DESCRIPTION	MOISTURE CONDITION	CONSISTENCY	DENSITY	DCP TEST (AS1289.6.3.2) Blows per 100 mm																
												0	5	10	15	20	25											
L			0.00	0.00	0.00 m ASS samples collected at 0.25m intervals to 2.0m DS 0.70-0.80 m Rec = 100/100 mm		CI	Sandy CLAY medium plasticity, dark grey and brown, fine to medium grained sand, trace of organics	M																			
			0.30																									
			0.50																									
			1.00																									
			1.50																									
M			1.70		DS 3.50-3.70 m Rec = 200/200 mm		SP	SAND fine to medium grained, dark grey, trace of clay	M - W																			
			2.00																									
			2.20																									
H			2.00									DS 3.50-3.70 m Rec = 200/200 mm		SP	SAND fine to medium grained, grey and pale grey, trace of silt and clay becoming dark grey and brown	M - W												
			2.50																									
			3.00																									
			3.50																									
			4.00																									
M-H			4.00		DS 3.50-3.70 m Rec = 200/200 mm		SP	SAND fine to medium grained, grey and pale grey, trace of silt and clay becoming dark grey and brown	M - W																			
			4.50																									
			5.00																									
			5.00									DS 3.50-3.70 m Rec = 200/200 mm		SP	Indurated SAND fine to medium grained, dark brown and grey, weakly cemented	M - W												
			5.50																									
			6.00																									
			6.50																									
			7.00																									
			6.00	-6.00				END OF BOREHOLE @ 6.00 m																				

GAP 8_07.3 LIB.GLB Log GAP NON-CORED FULL PAGE 127683017 TASK 3000 - BH & DCP.GPJ DWG52521.GDW 16/11/2012 16:48 8.2.800

This report of borehole must be read in conjunction with accompanying notes and abbreviations. It has been prepared for geotechnical purposes only, without attempt to assess possible contamination. Any references to potential contamination are for information only and do not necessarily indicate the presence or absence of soil or groundwater contamination. GAP gINT FN. F01b RL3

APPENDIX B3:H



REPORT OF BOREHOLE: BH5/12

CLIENT: Sunshine Coast Council

COORDS: 507678.0 m E 7059398.0 m N AMG84 56

SHEET: 1 OF 1

PROJECT: Sunshine Coast Airport Expansion

SURFACE RL: 0.00 m DATUM: AHD

DRILL RIG: 4WD Auger

LOCATION: David Low Way

INCLINATION: -90°

CONTRACTOR: CSI Soil Testing

JOB NO: 127683017

SOLE DIA: 80 mm HOLE DEPTH: 6.00 m

LOGGED: BCT

DATE: 28/8/12

CHECKED: WM

DATE: 29/10/12

Drilling			Sampling		Field Material Description											
METHOD	PENETRATION RESISTANCE	WATER	DEPTH (metres)	DEPTH RL	SAMPLE OR FIELD TEST	RECOVERED GRAPHIC LOG	USCS SYMBOL	SOIL/ROCK MATERIAL DESCRIPTION	MOISTURE CONDITION	CONSISTENCY	DCP TEST (AS1289.6.3.2) Blows per 100 mm					
											0	5	10	15	20	25
ADT	L	GROUNDWATER INFLOW OBSERVED AT 0.7 M DEPTH	0	0.00	0.00 m ASS samples collected at 0.25m intervals to 2.0m		CI	Sandy CLAY medium plasticity, dark grey, fine to medium grained sand, trace of organics	M	S	1					
			SP	SAND fine to medium grained, pale grey, trace of silt becoming orange, brown and pale grey with some silt and clay			L - MD									
			1	1.00	DS 1.70-1.80 m Rec = 100/100 mm 2.00-2.40 m PP <5 kPa U50 U 2.00-2.40 m Rec = 400/400 mm		CI / CH	Sandy CLAY medium to high plasticity, grey, fine to medium grained sand, trace of organics	M - W	VS - S						
		4	4.10	SP			Indurated SAND fine to medium, dark grey, strongly to weakly cemented	W								VD
			5	-4.10												
			6	-6.00												
								END OF BOREHOLE @ 6.00 m								

GAP 8_07_3 LIB.GLB Log GAP NON-CORED FULL PAGE 127683017 TASK 3000 - BH & DCP.GPJ DWG52521.GDW 16/11/2012 16:48 8.2.800

This report of borehole must be read in conjunction with accompanying notes and abbreviations. It has been prepared for geotechnical purposes only, without attempt to assess possible contamination. Any references to potential contamination are for information only and do not necessarily indicate the presence or absence of soil or groundwater contamination.

GAP gINT FN. F01b
RL3

APPENDIX B3:H



REPORT OF BOREHOLE: BH6/12

CLIENT: Sunshine Coast Council

COORDS: 507425.0 m E 7059412.0 m N AMG84 56

SHEET: 1 OF 1

PROJECT: Sunshine Coast Airport Expansion

SURFACE RL: 0.00 m DATUM: AHD

DRILL RIG: 4WD Auger

LOCATION: David Low Way

INCLINATION: -90°

CONTRACTOR: CSI Soil Testing

JOB NO: 127683017

HOLE DIA: 80 mm HOLE DEPTH: 6.00 m

LOGGED: BCT

DATE: 27/8/12

CHECKED: WM

DATE: 29/10/12

Drilling			Sampling		Field Material Description													
METHOD	PENETRATION RESISTANCE	WATER	DEPTH (metres)	DEPTH RL	SAMPLE OR FIELD TEST	RECOVERED GRAPHIC LOG	USCS SYMBOL	SOIL/ROCK MATERIAL DESCRIPTION	MOISTURE CONDITION	CONSISTENCY	DENSITY	DCP TEST (AS1289.6.3.2) Blows per 100 mm						
												0	5	10	15	20	25	
			0	0.00	0.00 m ASS samples collected at 0.25m intervals to 2.0m		CI	Sandy CLAY medium plasticity, dark grey, fine to medium grained sand, trace of organics, with some silt	M	F								
			-0.20	-0.20			SP	SAND fine to medium grained, brown, with some silt and clay becoming grey		MD								
			-0.40	-0.40	DS 0.60-0.80 m Rec = 200/200 mm			becoming pale grey, pale yellow brown		D								
			1.00	-1.00				becoming pale grey										
			2.50	-2.50				becoming pale grey										
			3.50	-3.50														
			3.70	-3.70			SP	Indurated SAND fine to medium, dark brown, strongly cemented becoming weakly cemented										
			5.50	-5.50	DS 5.50-5.70 m Rec = 200/200 mm		SP	SAND fine to medium grained, grey and pale grey										
			6.00	-6.00				END OF BOREHOLE @ 6.00 m										

GAP 8_07.3 LIB.GLB Log GAP NON-CORED FULL PAGE 127683017 TASK 3000 - BH & DCP.GPJ DWG52521.GDW 16/11/2012 16:48 8.2.800

This report of borehole must be read in conjunction with accompanying notes and abbreviations. It has been prepared for geotechnical purposes only, without attempt to assess possible contamination. Any references to potential contamination are for information only and do not necessarily indicate the presence or absence of soil or groundwater contamination. GAP gINT FN. F01b RL3

APPENDIX B3:H



REPORT OF BOREHOLE: BH7/12

CLIENT: Sunshine Coast Council

COORDS: 507223.0 m E 7059714.0 m N AMG84 56

SHEET: 1 OF 1

PROJECT: Sunshine Coast Airport Expansion

SURFACE RL: 0.00 m DATUM: AHD

DRILL RIG: 4WD Auger

LOCATION: David Low Way

INCLINATION: -90°

CONTRACTOR: CSI Soil Testing

JOB NO: 127683017

HOLE DIA: 80 mm HOLE DEPTH: 8.50 m

LOGGED: BCT

DATE: 28/8/12

CHECKED: WM

DATE: 29/10/12

Drilling			Sampling		Field Material Description						
METHOD	PENETRATION RESISTANCE	WATER	DEPTH (metres)	DEPTH RL	SAMPLE OR FIELD TEST	RECOVERED GRAPHIC LOG	USCS SYMBOL	SOIL/ROCK MATERIAL DESCRIPTION	MOISTURE CONDITION	CONSISTENCY DENSITY	STRUCTURE AND ADDITIONAL OBSERVATIONS
ADT	L	GROUNDWATER INFLOW OBSERVED AT 0.8 M DEPTH	0	0.00	0.00 m ASS samples collected at 0.25m intervals to 2.0m		CI SM CH	Sandy CLAY medium plasticity, dark grey, fine to medium grained sand, with some silt, trace of organics Silty SAND fine to medium grained, pale grey, with some clay CLAY high plasticity, grey, trace of organics, with some fine to medium grained sand	M	S VL	
			0.20	-0.20							
L-M			0.50	-0.50	DS 1.10-1.30 m Rec = 200/200 mm 1.10 m PP <25 kPa U50 U 2.00-2.20 m Rec = 200/200 mm 2.00-2.20 m PP <25 kPa U50 U 4.00-4.30 m Rec = 300/300 mm 4.00-4.30 m PP <25 kPa				M - W	VS	W
			1								
			4								
			8.50	-8.50				END OF BOREHOLE @ 8.50 m			

GAP 8_07.3 LIB.GLB Log GAP NON-CORED FULL PAGE 127683017 TASK 3000 - BH & DCP.GPJ <<DrawingFile>> 16/11/2012 16:54 82.800

This report of borehole must be read in conjunction with accompanying notes and abbreviations. It has been prepared for geotechnical purposes only, without attempt to assess possible contamination. Any references to potential contamination are for information only and do not necessarily indicate the presence or absence of soil or groundwater contamination.

GAP gINT FN. F01a
RL3

APPENDIX B3:H



REPORT OF BOREHOLE: BH9/12

CLIENT: Sunshine Coast Council

COORDS: 507473.0 m E 7059615.0 m N AMG84 56

SHEET: 1 OF 1

PROJECT: Sunshine Coast Airport Expansion

SURFACE RL: 0.00 m DATUM: AHD

DRILL RIG: 4WD Auger

LOCATION: David Low Way

INCLINATION: -90°

CONTRACTOR: CSI Soil Testing

JOB NO: 127683017

HOLE DIA: 80 mm HOLE DEPTH: 6.90 m

LOGGED: BCT

DATE: 27/8/12

CHECKED: WM

DATE: 29/10/12

Drilling			Sampling		Field Material Description															
METHOD	PENETRATION RESISTANCE	WATER	DEPTH (metres)	DEPTH RL	SAMPLE OR FIELD TEST	RECOVERED GRAPHIC LOG	USCS SYMBOL	SOIL/ROCK MATERIAL DESCRIPTION	MOISTURE CONDITION	CONSISTENCY	DENSITY	DCP TEST (AS1289.6.3.2) Blows per 100 mm								
												0	5	10	15	20	25			
ADT	L	GROUNDWATER INFLOW OBSERVED AT 1.40 M DEPTH	0	0.00	0.00 m ASS samples collected at 0.25m intervals to 2.0m		CI	Sandy CLAY medium plasticity, dark grey, fine to medium grained sand, trace of organics	M	F										
			-0.20				SC	Clayey SAND fine to medium grained, pale grey and orange brown, medium plasticity clay												L
			-0.60				CH	CLAY high plasticity, pale grey, with some fine to medium grained sand												S - F
						1.40	-1.40	DS 1.20-1.30 m Rec = 100/100 mm		SP	SAND fine to medium grained, pale grey	W	D - VD							
						2.40	-2.40			becoming dark grey and brown										
						3	-3.00			SP	Indurated SAND fine to medium grained, dark grey and brown, strongly cemented	VD								
						3.60	-3.60		CI-CH	CLAY medium to high plasticity, pale brown, with some fine to medium grained sand	St									
						4	-4.20	3.80 m 3.80 m PP = 140 kPa			becoming pale brown	F								
						4.70	-4.70		SM	Silty SAND fine to medium grained, pale grey and pale brown	M									
						5	-5.50			CI-CH	CLAY medium to high plasticity, grey, with some fine to medium grained sand	S - F								
			6	-6.10			SP	Indurated SAND fine to medium grained, dark brown, weakly cemented	VD											
			6.60	-6.60				becoming brown												
			7	-6.90				END OF BOREHOLE @ 6.90 m												

This report of borehole must be read in conjunction with accompanying notes and abbreviations. It has been prepared for geotechnical purposes only, without attempt to assess possible contamination. Any references to potential contamination are for information only and do not necessarily indicate the presence or absence of soil or groundwater contamination.

GAP gINT FN. F01b RL3

GAP 8_07.3 LIB.GLB Log GAP NON-CORED FULL PAGE 127683017 TASK 3000 - BH & DCP.GPJ DWG52521.GDW 16/11/2012 16:48 8.2.800

APPENDIX B3:H



REPORT OF BOREHOLE: BH10/12

CLIENT: Sunshine Coast Council
 PROJECT: Sunshine Coast Airport Expansion
 LOCATION: David Low Way
 JOB NO: 127683017

COORDS: 507240.0 m E 7059461.0 m N AMG84 56
 SURFACE RL: 0.00 m DATUM: AHD
 INCLINATION: -90°
 HOLE DIA: 80 mm HOLE DEPTH: 6.00 m

SHEET: 1 OF 1
 DRILL RIG: 4WD Auger
 CONTRACTOR: CSI Soil Testing
 LOGGED: BCT DATE: 29/8/12
 CHECKED: WM DATE: 29/10/12

Drilling			Sampling	Field Material Description																	
METHOD	PENETRATION RESISTANCE	WATER	DEPTH (metres)	DEPTH RL	SAMPLE OR FIELD TEST	RECOVERED GRAPHIC LOG	USCS SYMBOL	SOIL/ROCK MATERIAL DESCRIPTION	MOISTURE CONDITION	CONSISTENCY	DENSITY	DCP TEST (AS1289.6.3.2) Blows per 100 mm									
												0	5	10	15	20	25				
ADT		GROUNDWATER INFLOW OBSERVED AT 0.70 M DEPTH	0.00	0.00	0.00 m ASS samples collected at 0.25m intervals to 2.0m DS 0.70-0.90 m Rec = 200/200 mm		SP	Sandy CLAY medium plasticity, dark grey, fine to medium grained sand, with some organics	M	S											
			-0.20	-0.20				SAND fine to medium grained, pale grey and pale brown becoming grey, with some medium plasticity clay												MD	
			0.50	-0.50																	
			1.20	-1.20				becoming brown and grey													
			1.60	-1.60				becoming dark brown and dark grey												W	
			2.20	-2.20	becoming dark brown, slightly indurated and weakly cemented	M - W	D - VD	HB													
			2.50	-2.50	Indurated SAND fine to medium grained, dark brown and dark grey, strongly cemented	SP															
			2.50	-2.50	SAND fine to medium grained, dark brown, trace silt	SP															
			4.30	-4.30	Indurated SAND fine to medium grained, dark brown and dark grey, strongly cemented	SP															
			6.00	-6.00						END OF BOREHOLE @ 6.00 m											

GAP 8_07_3 LIB.GLB Log GAP NON-CORED FULL PAGE 127683017 TASK 3000 - BH & DCP.GPJ DWG52521.GDW 16/11/2012 16:48 8.2.800

This report of borehole must be read in conjunction with accompanying notes and abbreviations. It has been prepared for geotechnical purposes only, without attempt to assess possible contamination. Any references to potential contamination are for information only and do not necessarily indicate the presence or absence of soil or groundwater contamination. GAP gINT FN. F01b RL3

APPENDIX B3:H



REPORT OF BOREHOLE: BH11/12

CLIENT: Sunshine Coast Council

COORDS: 507367.0 m E 7059286.0 m N AMG84 56

SHEET: 1 OF 1

PROJECT: Sunshine Coast Airport Expansion

SURFACE RL: 0.00 m DATUM: AHD

DRILL RIG: 4WD Auger

LOCATION: David Low Way

INCLINATION: -90°

CONTRACTOR: CSI Soil Testing

JOB NO: 127683017

HOLE DIA: 80 mm HOLE DEPTH: 6.00 m

LOGGED: BCT

DATE: 27/8/12

CHECKED: WM

DATE: 29/10/12

Drilling			Sampling		Field Material Description												
METHOD	PENETRATION RESISTANCE	WATER	DEPTH (metres)	DEPTH RL	SAMPLE OR FIELD TEST	RECOVERED GRAPHIC LOG	USCS SYMBOL	SOIL/ROCK MATERIAL DESCRIPTION	MOISTURE CONDITION	CONSISTENCY	DENSITY	DCP TEST (AS1289.6.3.2) Blows per 100 mm					
												0	5	10	15	20	25
L			0.00	0.00	0.00 m ASS samples collected at 0.25m intervals to 2.0m DS 0.50-0.70 m Rec = 200/200 mm	[Graphic Log]	CI	Sandy CLAY medium plasticity, dark grey, fine to medium grained sand, trace of organics	M	F			[DCP Test Data]				
			0.20	0.20									[DCP Test Data]				
M			0.30	0.30	DS 0.50-0.70 m Rec = 200/200 mm	[Graphic Log]	SP	SAND fine to medium grained, pale brown and pale grey, with some medium plasticity clay becoming pale grey	M-W	D		[DCP Test Data]					
			0.60	0.60								[DCP Test Data]					
H			0.70	0.70	DS 0.50-0.70 m Rec = 200/200 mm	[Graphic Log]	SP	becoming grey becoming dark grey				[DCP Test Data]					
			0.90	0.90								[DCP Test Data]					
ADT			1.10	1.10	DS 0.50-0.70 m Rec = 200/200 mm	[Graphic Log]	SP	Indurated SAND fine to medium, dark grey and dark brown, weakly cemented becoming strongly cemented	VD			[DCP Test Data]					
			3.50	3.50								[DCP Test Data]					
M-H			3.50	3.50	DS 5.50-5.70 m Rec = 200/200 mm	[Graphic Log]	SP	SAND fine to medium grained, brown orange and dark brown	W			[DCP Test Data]					
			5.70	5.70								[DCP Test Data]					
			6.00	6.00				END OF BOREHOLE @ 6.00 m				[DCP Test Data]					

GAP 8_07.3 LIB.GLB Log GAP NON-CORED FULL PAGE 127683017 TASK 3000 - BH & DCP.GPJ DWG52521.GDW 16/11/2012 16:48 8.2.800

This report of borehole must be read in conjunction with accompanying notes and abbreviations. It has been prepared for geotechnical purposes only, without attempt to assess possible contamination. Any references to potential contamination are for information only and do not necessarily indicate the presence or absence of soil or groundwater contamination.

GAP gINT FN. F01b RL3

APPENDIX B3:H



REPORT OF BOREHOLE: BH12/12

CLIENT: Sunshine Coast Council

COORDS: 507554.0 m E 7059049.0 m N AMG84 56

SHEET: 1 OF 1

PROJECT: Sunshine Coast Airport Expansion

SURFACE RL: 0.00 m DATUM: AHD

DRILL RIG: 4WD Auger

LOCATION: David Low Way

INCLINATION: -90°

CONTRACTOR: CSI Soil Testing

JOB NO: 127683017

HOLE DIA: 80 mm HOLE DEPTH: 6.00 m

LOGGED: BCT

DATE: 27/8/12

CHECKED: WM

DATE: 29/10/12

Drilling			Sampling		Field Material Description													
METHOD	PENETRATION RESISTANCE	WATER	DEPTH (metres)	DEPTH RL	SAMPLE OR FIELD TEST	RECOVERED GRAPHIC LOG	USCS SYMBOL	SOIL/ROCK MATERIAL DESCRIPTION	MOISTURE CONDITION	CONSISTENCY	DENSITY	DCP TEST (AS1289.6.3.2) Blows per 100 mm						
												0	5	10	15	20	25	
L			0.00	0.00	0.00 m ASS samples collected at 0.25m intervals to 2.0m DS 0.50-0.60 m Rec = 100/100 mm	[Graphic Log Symbols]	SC	Clayey SAND fine to medium grained, dark grey, trace of organics	M	L								
			-0.20	-0.20			SM	Silty SAND fine to medium grained, grey and dark grey	M - W	MD								
M			-0.40	-0.40		[Graphic Log Symbols]	SP	SAND fine to medium grained, pale grey	M - W	MD								
			-0.70	-0.70			SP	Indurated SAND fine to medium, dark grey, weakly cemented trace of silt, becoming strongly cemented	W	D								
H			1.10	1.10		[Graphic Log Symbols]												
			-1.10	-1.10														
ADT			3.50	3.50		[Graphic Log Symbols]	SP	SAND fine to medium grained, brown	M - W	VD								
			-3.50	-3.50														
M			5.50	5.50		[Graphic Log Symbols]		becoming pale brown										
			-5.50	-5.50														
			6.00	-6.00				END OF BOREHOLE @ 6.00 m										

This report of borehole must be read in conjunction with accompanying notes and abbreviations. It has been prepared for geotechnical purposes only, without attempt to assess possible contamination. Any references to potential contamination are for information only and do not necessarily indicate the presence or absence of soil or groundwater contamination.

GAP gINT FN. F01b RL3

GAP 8_07.3 LIB.GLB Log GAP NON-CORED FULL PAGE 127683017 TASK 3000 - BH & DCP.GPJ DWG52521.GDW 16/11/2012 16:48 8.2.800

APPENDIX B3:H



REPORT OF BOREHOLE: BH13/12

CLIENT: Sunshine Coast Council

COORDS: 507442.0 m E 7058907.0 m N AMG84 56

SHEET: 1 OF 1

PROJECT: Sunshine Coast Airport Expansion

SURFACE RL: 0.00 m DATUM: AHD

DRILL RIG: 4WD Auger

LOCATION: David Low Way

INCLINATION: -90°

CONTRACTOR: CSI Soil Testing

JOB NO: 127683017

HOLE DIA: 80 mm HOLE DEPTH: 6.00 m

LOGGED: BCT

DATE: 29/8/12

CHECKED: WM

DATE: 29/10/12

Drilling			Sampling		Field Material Description															
METHOD	PENETRATION RESISTANCE	WATER	DEPTH (metres)	DEPTH RL	SAMPLE OR FIELD TEST	RECOVERED GRAPHIC LOG	USCS SYMBOL	SOIL/ROCK MATERIAL DESCRIPTION	MOISTURE CONDITION	CONSISTENCY	DENSITY	DCP TEST (AS1289.6.3.2) Blows per 100 mm								
												0	5	10	15	20	25			
M			0.00	0.00	0.00 m ASS samples collected at 0.25m intervals to 2.0m	[Symbol]	SM	Silty SAND fine to medium grained, dark grey, trace of organics	L				[DCP Test Data]							
			-0.20	-0.20									D							
H			0.80	-0.80	DS 0.60-0.80 m Rec = 200/200 mm	[Symbol]	SP	Indurated SAND fine to medium, dark grey, weakly cemented	M - W	VD			[DCP Test Data]							
			-1.60	-1.60																
becoming very strongly to strongly cemented																				
			4.00	-4.00		[Symbol]	SP	SAND fine to medium grained, brown, trace silt												
END OF BOREHOLE @ 6.00 m																				
			-6.00	-6.00																

GAP 8_07.3 LIB.GLB Log GAP NON-CORED FULL PAGE 127683017 TASK 3000 - BH & DCP.GPJ DWG52521.GDW 16/11/2012 16:48 8.2.800

This report of borehole must be read in conjunction with accompanying notes and abbreviations. It has been prepared for geotechnical purposes only, without attempt to assess possible contamination. Any references to potential contamination are for information only and do not necessarily indicate the presence or absence of soil or groundwater contamination.

GAP gINT FN. F01b
RL3

APPENDIX B3:H



REPORT OF BOREHOLE: BH14/12

CLIENT: Sunshine Coast Council

COORDS: 507287.0 m E 7058689.0 m N AMG84 56

SHEET: 1 OF 1

PROJECT: Sunshine Coast Airport Expansion

SURFACE RL: 0.00 m DATUM: AHD

DRILL RIG: 4WD Auger

LOCATION: David Low Way

INCLINATION: -90°

CONTRACTOR: CSI Soil Testing

JOB NO: 127683017

SOLE DIA: 80 mm HOLE DEPTH: 6.00 m

LOGGED: BCT

DATE: 29/8/12

CHECKED: WM

DATE: 29/10/12

Drilling			Sampling	Field Material Description					
METHOD	PENETRATION RESISTANCE	WATER	SAMPLE OR FIELD TEST	RECOVERED GRAPHIC LOG	USCS SYMBOL	SOIL/ROCK MATERIAL DESCRIPTION	MOISTURE CONDITION	CONSISTENCY DENSITY	DCP TEST (AS1289.6.3.2) Blows per 100 mm
									0 5 10 15 20 25
			0.00 m ASS samples collected at 0.25m intervals to 2.0m DS 0.30-0.50 m Rec = 200/200 mm	x x	SM	Silty SAND fine to medium grained, dark grey, trace of organics	L		
					SP	SAND fine to medium grained, pale grey, with some silt	M	MD	
				Δ Δ	SP	Indurated SAND fine to medium grained, dark grey, weakly cemented	M-W		
				Δ Δ		becoming strongly cemented			
				Δ Δ		becoming brown, weakly cemented			
				Δ Δ			VD		
				Δ Δ	SP	SAND fine to medium grained, brown and dark brown, trace silt	M		
						END OF BOREHOLE @ 6.00 m			

ADT

GROUNDWATER INFLOW OBSERVED AT 1.5 M DEPTH

GAP 8_07.3 LIB.GLB Log GAP NON-CORED FULL PAGE 127683017 TASK 3000 - BH & DCP.GPJ DWG52521.GDW 16/11/2012 16:48 8.2.800

This report of borehole must be read in conjunction with accompanying notes and abbreviations. It has been prepared for geotechnical purposes only, without attempt to assess possible contamination. Any references to potential contamination are for information only and do not necessarily indicate the presence or absence of soil or groundwater contamination.

GAP gINT FN. F01b
RL3

APPENDIX B3:H



REPORT OF BOREHOLE: BH15/12

CLIENT: Sunshine Coast Council

COORDS: 507988.0 m E 7058709.0 m N AMG84 56

SHEET: 1 OF 1

PROJECT: Sunshine Coast Airport Expansion

SURFACE RL: 0.00 m DATUM: AHD

DRILL RIG: 4WD Auger

LOCATION: David Low Way

INCLINATION: -90°

CONTRACTOR: CSI Soil Testing

JOB NO: 127683017

SOLE DIA: 80 mm HOLE DEPTH: 6.00 m

LOGGED: BCT

DATE: 29/8/12

CHECKED: WM

DATE: 29/10/12

Drilling			Sampling		Field Material Description																	
METHOD	PENETRATION RESISTANCE	WATER	DEPTH (metres)	DEPTH RL	SAMPLE OR FIELD TEST	RECOVERED GRAPHIC LOG	USCS SYMBOL	SOIL/ROCK MATERIAL DESCRIPTION	MOISTURE CONDITION	CONSISTENCY	DENSITY	DCP TEST (AS1289.6.3.2) Blows per 100 mm										
												0	5	10	15	20	25					
ADT	L	GROUNDWATER INFLOW OBSERVED AT 0.80 M DEPTH	0.00	0.00	0.00 m ASS samples collected at 0.25m intervals to 2.0m	[X-X]	SM	Silty SAND fine to medium grained, dark grey, trace of organics	L													
			0.25	-0.25																		
						0.80	-0.80	DS 0.60-0.80 m Rec = 200/200 mm	[Pattern]	SP	SAND fine to medium grained, pale grey, trace of organics	M										
						1.50	-1.50				becoming dark grey	M-D										
						1.80	-1.80		[Pattern]	SP	Indurated SAND fine to medium grained, dark brown and dark grey, strongly cemented	M-W										
						2.40	-2.40				becoming brown and dark brown	W										
						2.60	-2.60				becoming weakly cemented											
										SP	SAND fine to medium grained, brown, trace silt	VD										
												M										
								END OF BOREHOLE @ 6.00 m														

GAP 8_07.3 LIB.GLB Log GAP NON-CORED FULL PAGE 127683017 TASK 3000 - BH & DCP.GPJ DWG52521.GDW 16/11/2012 16:48 8.2.800

This report of borehole must be read in conjunction with accompanying notes and abbreviations. It has been prepared for geotechnical purposes only, without attempt to assess possible contamination. Any references to potential contamination are for information only and do not necessarily indicate the presence or absence of soil or groundwater contamination. GAP gINT FN. F01b RL3

APPENDIX B3:H



REPORT OF BOREHOLE: BH16/12

CLIENT: Sunshine Coast Council

COORDS: 507637.0 m E 7058686.0 m N AMG84 56

SHEET: 1 OF 1

PROJECT: Sunshine Coast Airport Expansion

SURFACE RL: 0.00 m DATUM: AHD

DRILL RIG: 4WD Auger

LOCATION: David Low Way

INCLINATION: -90°

CONTRACTOR: CSI Soil Testing

JOB NO: 127683017

HOLE DIA: 80 mm HOLE DEPTH: 6.00 m

LOGGED: BCT

DATE: 29/8/12

CHECKED: WM

DATE: 29/10/12

Drilling			Sampling		Field Material Description														
METHOD	PENETRATION RESISTANCE	WATER	DEPTH (metres)	DEPTH RL	SAMPLE OR FIELD TEST	RECOVERED GRAPHIC LOG	USCS SYMBOL	SOIL/ROCK MATERIAL DESCRIPTION	MOISTURE CONDITION	CONSISTENCY	DENSITY	DCP TEST (AS1289.6.3.2) Blows per 100 mm							
												0	5	10	15	20	25		
L			0.10	0.10	0.00 m ASS samples collected at 0.25m intervals to 2.0m DS 0.20-0.40 m Rec = 200/200 mm		SP	Silty SAND fine to medium grained, dark grey	L										
			0.20	0.20			SP	SAND fine to medium grained, pale brown and grey becoming grey	MD										
M			0.50	0.50			SM	Indurated SAND fine to medium grained, dark brown and dark grey, trace of silt, weakly cemented	D										
			1.00	1.00				becoming strongly cemented	M										
			1.00	1.00				becoming weakly cemented											
H			2.00	2.00															
			3.00	3.00			SP	SAND fine to medium grained, brown, trace silt	VD										
ADT									M - W										
M																			
			6.00	6.00				END OF BOREHOLE @ 6.00 m											

GAP 8_07.3 LIB.GLB Log GAP NON-CORED FULL PAGE 127683017 TASK 3000 - BH & DCP.GPJ DWG52521.GDW 16/11/2012 16:48 8.2.800

This report of borehole must be read in conjunction with accompanying notes and abbreviations. It has been prepared for geotechnical purposes only, without attempt to assess possible contamination. Any references to potential contamination are for information only and do not necessarily indicate the presence or absence of soil or groundwater contamination. GAP gINT FN. F01b RL3

APPENDIX B3:H



REPORT OF BOREHOLE: BH17/12

CLIENT: Sunshine Coast Council

COORDS: 507265.0 m E 7059110.0 m N AMG84 56

SHEET: 1 OF 1

PROJECT: Sunshine Coast Airport Expansion

SURFACE RL: 0.00 m DATUM: AHD

DRILL RIG: 4WD Auger

LOCATION: David Low Way

INCLINATION: -90°

CONTRACTOR: CSI Soil Testing

JOB NO: 127683017

HOLE DIA: 80 mm HOLE DEPTH: 6.00 m

LOGGED: BCT

DATE: 29/8/12

CHECKED: WM

DATE: 29/10/12

Drilling			Sampling		Field Material Description																												
METHOD	PENETRATION RESISTANCE	WATER	DEPTH (metres)	DEPTH RL	SAMPLE OR FIELD TEST	RECOVERED GRAPHIC LOG	USCS SYMBOL	SOIL/ROCK MATERIAL DESCRIPTION	MOISTURE CONDITION	CONSISTENCY	DENSITY	DCP TEST (AS1289.6.3.2) Blows per 100 mm																					
												0	5	10	15	20	25																
L M ADT H			0.00	0.00	0.00 m ASS samples collected at 0.25m intervals to 2.0m	[Graphic Log: 0.00-0.25m]	SM	Silty SAND fine to medium grained, dark grey, trace of organics with some clay	M	MD																							
			-0.20	-0.20																													
			0.50	-0.50	DS 0.50-0.70 m Rec = 200/200 mm	[Graphic Log: 0.25-0.70m]	SP	SAND fine to medium grained, pale grey and grey, with some silt	D																								
			-0.50	-0.50																													
			1.00	-1.00																													
			1.90	-1.90	becoming dark grey and dark brown, strongly cemented	[Graphic Log: 1.00-1.90m]	SP	Indurated SAND fine to medium, dark grey, weakly cemented	M - W																								
			2.80	-2.80																													
			5.20	-5.20	becoming dark brown	[Graphic Log: 1.90-5.20m]	SP	SAND fine to medium grained, brown, with some silt	M																								
				-6.00				END OF BOREHOLE @ 6.00 m																									

This report of borehole must be read in conjunction with accompanying notes and abbreviations. It has been prepared for geotechnical purposes only, without attempt to assess possible contamination. Any references to potential contamination are for information only and do not necessarily indicate the presence or absence of soil or groundwater contamination. GAP gINT FN. F01b RL3

GAP 8_07.3 LIB.GLB Log GAP NON-CORED FULL PAGE 127683017 TASK 3000 - BH & DCP.GPJ DWG 52521.GDW 16/11/2012 16:48 8.2.800