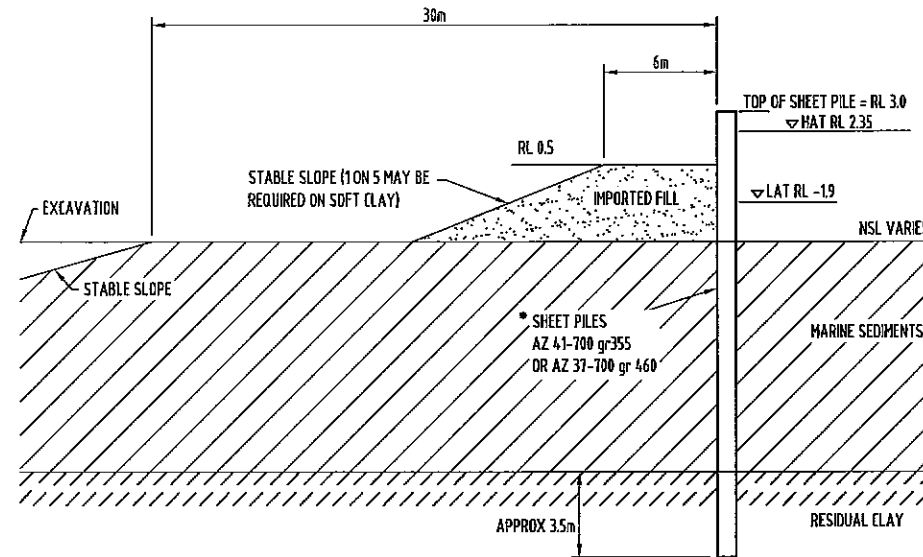
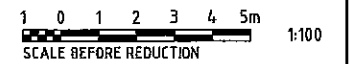


**WALL 3 - ROCK FACED EARTH BUND**  
SCALE 1:100



**WALL 6 - TEMPORARY SHEET PILE BUND -  
FOR MARINE SEDIMENTS UP TO 13.5m THICK**  
N.T.S

\*BASE ON MARINE SEDIMENT WITH EFFECTIVE STEAR STRENGTH  
PARAMETERS OF  $\phi' = 18^\circ$ ,  $C' = 0kPa$



DATE PLOTTED: 07 October, 2008 - 16:58pm

NO.	DATE	REVISIONS	REC.	APPR.
A	02/10/2008	LEASE BOUNDARY ADDED		

© Cardno (Qld) Pty Ltd All Rights Reserved 2005.  
Copyright in the whole and every part of this drawing belongs to Cardno (Qld) Pty Ltd and may not be used, sold, transferred, copied or reproduced in whole or in part in any manner or form or on any media, to any person other than by agreement with Cardno (Qld) Pty Ltd.

This document is produced by Cardno (Qld) Pty Ltd solely for the benefit of and use by the client in accordance with the terms of the retainer. Cardno (Qld) Pty Ltd does not and shall not assume any responsibility or liability whatsoever to any third party arising out of any use or reliance by third party on the content of this document.

DESIGNED: <i>SL</i>	A1	DATUM: A.H.D.
DRAWN: <i>SO</i>		
CHECKED: <i>SA</i>		
RECOMMENDED: PROJ. MAN. <i>[Signature]</i>	APPROVED: PROJ. DIR. <i>[Signature]</i>	RPEQ: 1470
CAD FILE: LA\1990-1819\Acad\1916\DWG\1916-318.dwg		
XREF: 19-A1-80-SHT		

**Cardno**  
Level 1, 8 Gardner Close, Millon 4064  
P.O. Box 388, Toowoong 4086.  
Email: [cardno@cardno.com.au](mailto:cardno@cardno.com.au)  
Web: [www.cardno.com.au](http://www.cardno.com.au)

AGN: 051 074 992

OFFICES:	TELEPHONE	FAX
Brisbane	(07) 3369 9822	(07) 3369 9722
Sydney	(02) 9416 8233	(02) 9416 8529
Gold Coast	(07) 5539 9333	(07) 5538 4547
Sunshine Coast	(07) 5443 2555	(07) 5443 5542
Townsville	(07) 4772 1166	(07) 4721 2508
Hervey Bay	(07) 4124 5455	(07) 4124 5155
Central Coast	(02) 4323 2558	(02) 4324 3251
Melbourne	(03) 9818 7755	(03) 9818 7033
Rockhampton	(07) 4924 7600	(07) 4928 4375
Toowoomba	(07) 4637 8122	(07) 4837 8155

<b>SHUTE HARBOUR MARINA DEVELOPMENT</b>		DATE: 1-08-2008	Rv.
SHUTE HARBOUR MARINA MARINA WALL DETAILS - WALL 3 AND 6		DRAWING No:	
		<b>7900/48/01-308</b>	<b>A</b>