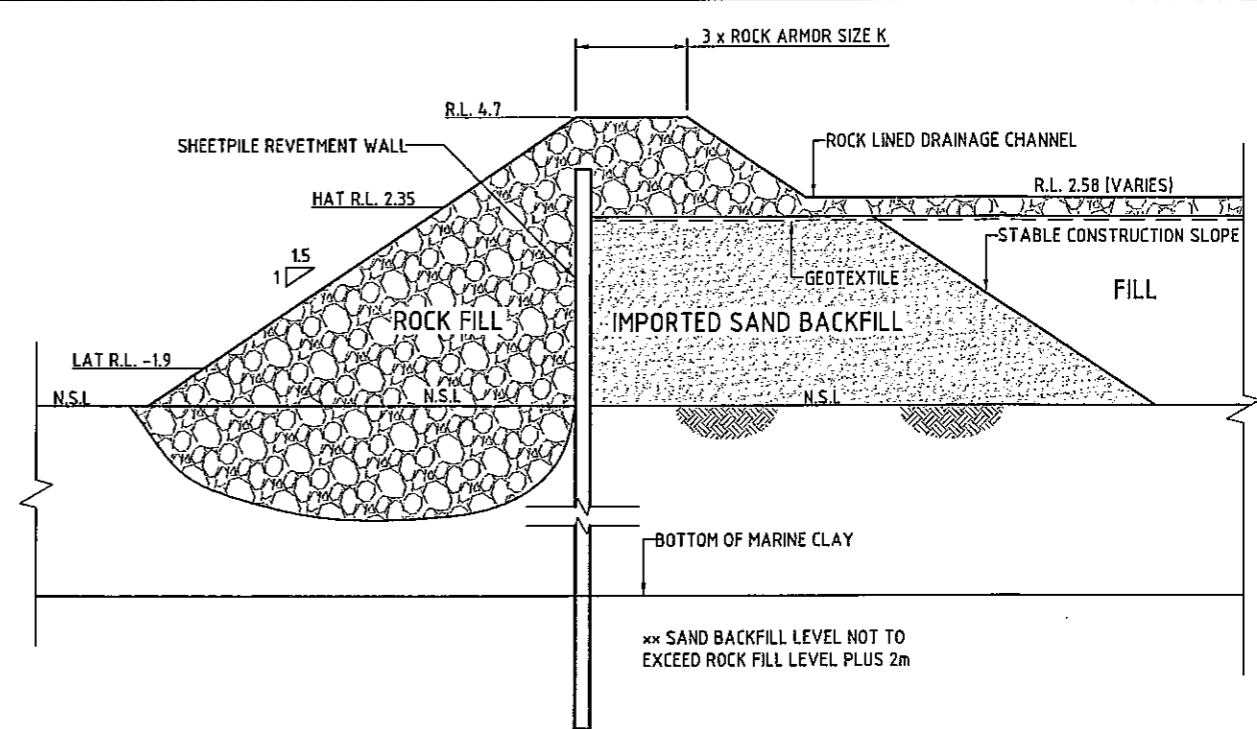


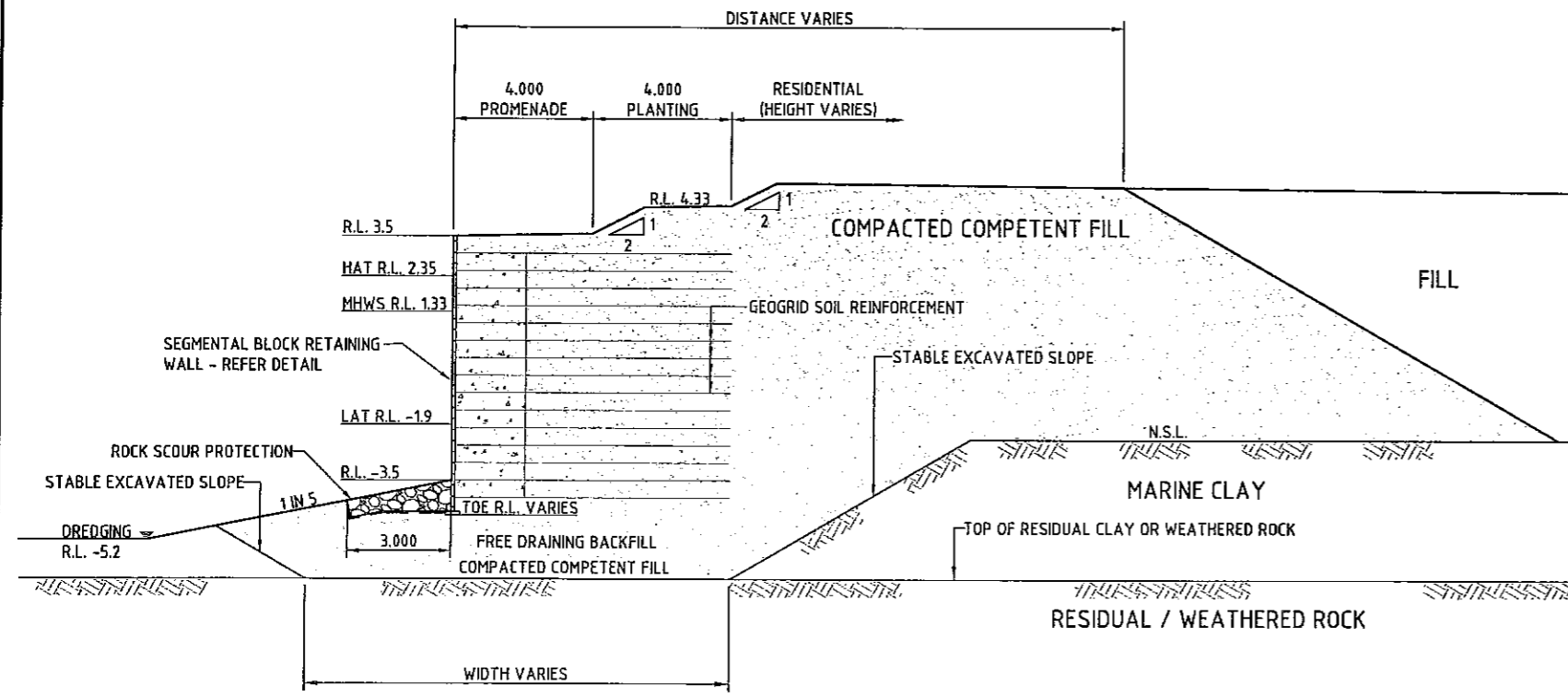
WALL 1 - REVETMENT WALL
OPTION WITH ROCK FACED SHEET PILE WALL CH 1040 TO 1240
 SCALE 1:100



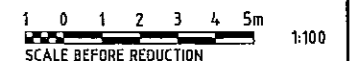
WALL 1 - REVETMENT WALL
OPTION WITH ROCK FACED SHEET PILE WALL CH 1240 TO 1354.87
 SCALE 1:100

NOTES:

- REFER TO DRAWING No. 7900/48/01-301 AND 302 FOR WALL LONGITUDINAL SECTIONS FOR REVETMENT WALL TYPES



WALL 1 - REVETMENT
SEGMENTAL BLOCK WALL
 SCALE 1:100



DATE PLOTTED: 04 August 2008 - 11:03am

© Cardno (Qld) Pty Ltd All Rights Reserved 2005. Copyright in the whole and every part of this drawing belongs to Cardno (Qld) Pty Ltd and may not be used, sold, transferred, copied or reproduced in whole or in part in any manner or form or on any media, to any person other than by agreement with Cardno (Qld) Pty Ltd.		DESIGNED: <i>JA</i> DRAWN: <i>SD</i> CHECKED: <i>AC</i> RECOMMENDED: PROJ. MAN. <i>Sturt</i> APPROVED: PROJ. DIR. <i>Sturt</i> CAD FILE: L:\7900-48\1\Acad\7900-48.dwg XREF: XL-A1-BD-SHT	A1 DATUM: A.H.D. Cardno (Qld) Pty Ltd Level 1, 5 Gardner Close, Milton 4084 P.O. Box 308, Toowoomba 4006 Email: cardno@cardno.com.au Web: www.cardno.com.au ACN: 051 074 992	OFFICES: Brisbane (07) 3399 8822 Sydney (02) 9416 8233 Gold Coast (07) 5539 9333 Sunshine Coast (07) 5443 2555 Townsville (07) 4772 1168 Hervey Bay (07) 4124 5455 Central Coast (02) 4323 2858 Melbourne (03) 9818 7755 Rockhampton (07) 4924 7900 Toowoomba (07) 4637 0122	TELEPHONE: (07) 3399 8822 (02) 9416 8233 (07) 5539 9333 (07) 5443 2555 (07) 4772 1168 (07) 4124 5455 (02) 4323 2858 (03) 9818 7755 (07) 4924 7900 (07) 4637 0122	FAX: (07) 3389 9722 (02) 9416 8529 (07) 5539 4847 (07) 5443 5842 (07) 4721 2508 (07) 4124 5155 (02) 4324 3251 (03) 9818 7033 (07) 4925 4375 (07) 4637 0155	SHUTE HARBOUR MARINA DEVELOPMENT SHUTE HARBOUR MARINA MARINA REVETMENT WALL DETAILS - WALL 1 DATE: 1-28-2008 DRAWING No: 7900/48/01-307	Rv. DATE REVISIONS REC. APPR.
--	--	---	---	---	---	---	--	-------------------------------