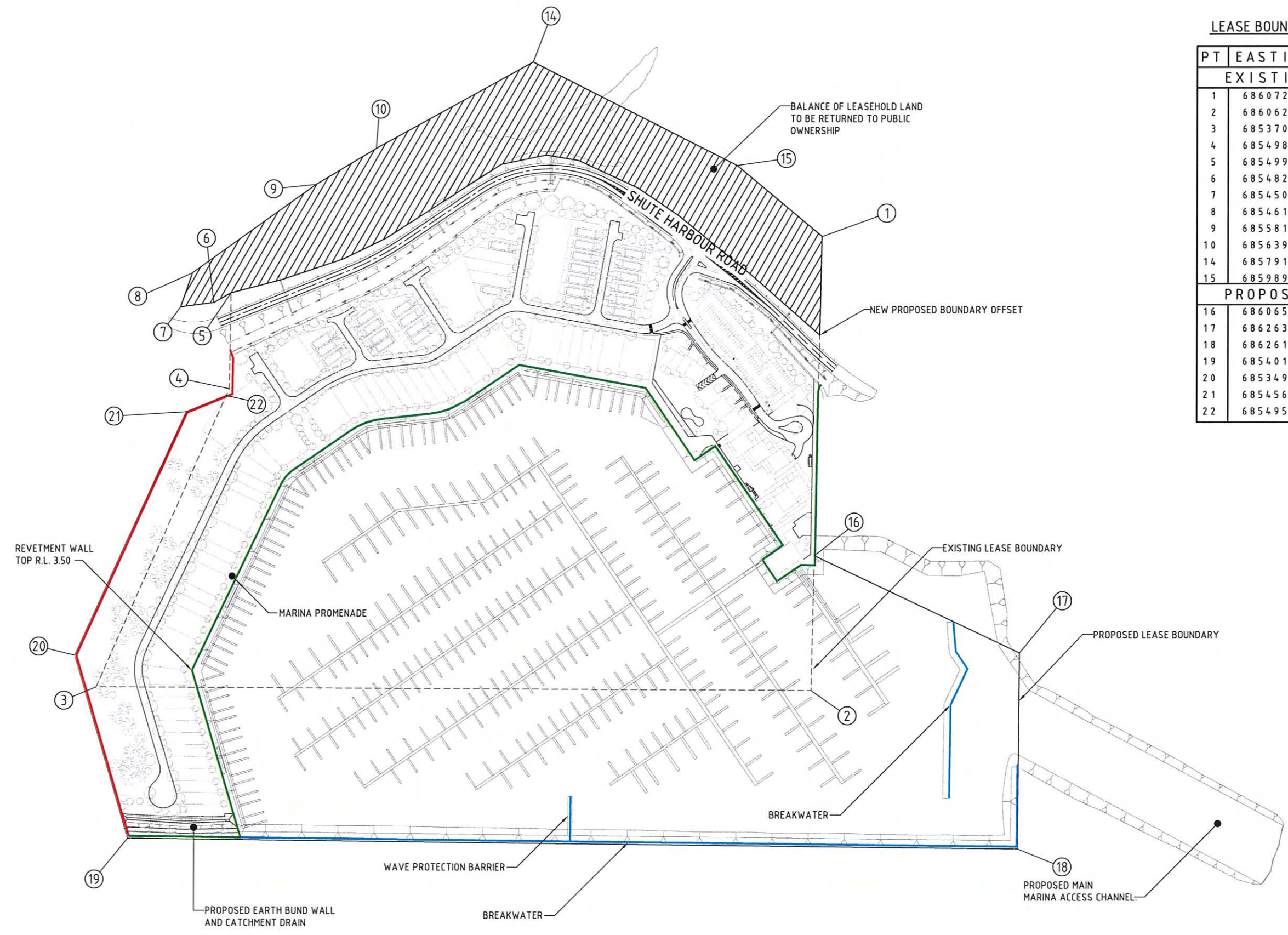




LEASE BOUNDARYS CO-ORDINATES

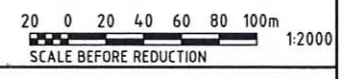
PT	EASTINGS	NORTHINGS
EXISTING BOUNDARY		
1	686072.116	7755459.748
2	686062.432	7755021.963
3	685370.400	7755024.398
4	685498.173	7755312.308
5	685499.446	7755404.673
6	685482.833	7755395.220
7	685450.729	7755391.144
8	685461.992	7755423.757
9	685581.656	7755509.190
10	685639.828	7755543.979
14	685791.330	7755627.528
15	685989.416	7755527.997
PROPOSED BOUNDARY		
16	686065.281	7755152.236
17	686263.840	7755058.356
18	686261.851	7754869.271
19	685401.495	7754878.323
20	685349.780	7755054.792
21	685456.706	7755289.932
22	685495.272	7755305.770



LAYOUT PLAN  
1:2000

LEGEND

- PROPOSED LEASE BOUNDARY ————
- EXISTING LEASE BOUNDARY - - - - -



DATE PLOTTED: 08 October, 2008 - 3:54pm

© Cardno (Qld) Pty Ltd All Rights Reserved 2005.  
Copyright in the whole and every part of this drawing belongs to Cardno (Qld) Pty Ltd and may not be used, sold, transferred, copied or reproduced in whole or in part in any manner or form or on any media, to any person other than by agreement with Cardno (Qld) Pty Ltd

DESIGNED: *SK*  
DRAWN: *SP*  
CHECKED: *SC*  
RECOMMENDED: PROJ. MAN. *P. Williams*  
APPROVED: PROJ. DIR. *P. Williams*  
RPEQ: 1470  
CAD FILE: L:\7900-48\01\Acad\7900\01-103.dwg  
XREF: XR-A1-B0-SHT, X-DESIGN, X-BASE

**A1** DATUM: A.H.D.  
**Cardno**  
Cardno (Qld) Pty Ltd  
Level 1, 5 Gardner Close, Milton 4064  
P.O. Box 388, Toowong 4066.  
Email: cardno@cardno.com.au  
Web: www.cardno.com.au

OFFICES: TELEPHONE FAX  
Brisbane (07) 3369 9822 (07) 3369 9722  
Sydney (02) 9416 8233 (02) 9416 6509  
Gold Coast (07) 5539 9333 (07) 5538 4647  
Sunshine Coast (07) 5443 2555 (07) 5443 5642  
Townsville (07) 4772 1168 (07) 4721 2508  
Hervey Bay (07) 4124 5455 (07) 4124 5155  
Central Coast (02) 4323 2558 (02) 4324 3251  
Melbourne (03) 9818 7755 (03) 9818 7033  
Rockhampton (07) 4924 7500 (07) 4926 4375  
Toowoomba (07) 4637 8122 (07) 4637 8155

**SHUTE HARBOUR MARINA DEVELOPMENT**  
SHUTE HARBOUR MARINA  
GENERAL  
BOUNDARY AND WALL LOCATION PLAN

DATE: 1-08-2008  
DRAWING No: **7900/48/01-103**  
Rv. **A**

Rv.	DATE	REVISIONS	REC.	APPR.
A	02/10/2008	BALANCE OF LEASEHOLD LAND NOTE AMENDED		