



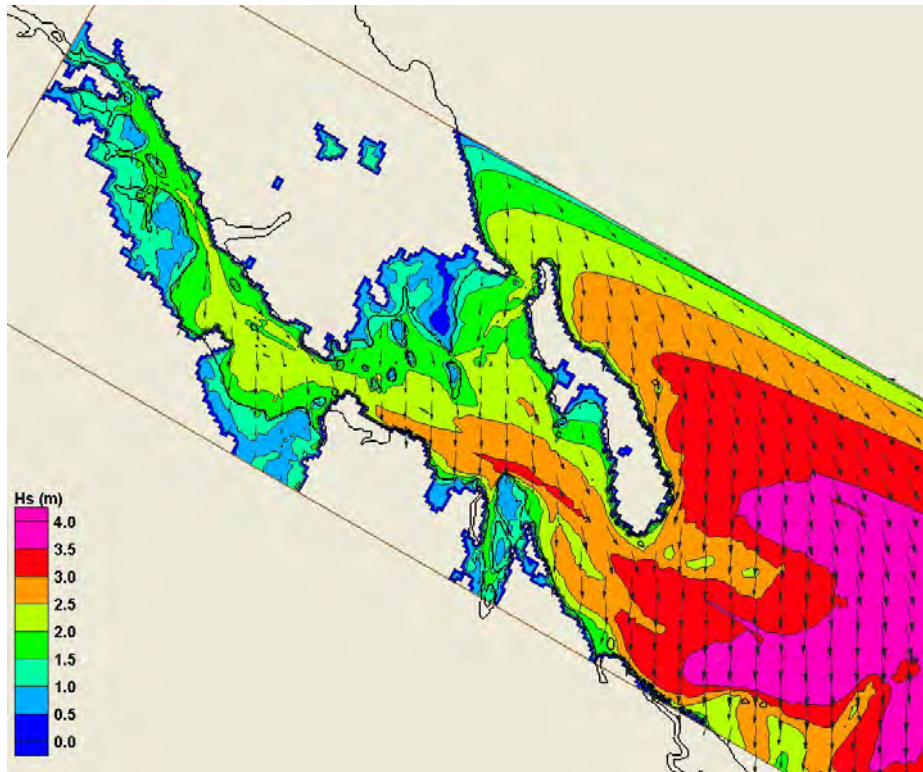
Gladstone Ports Corporation

*Growth, Prosperity, Community.*

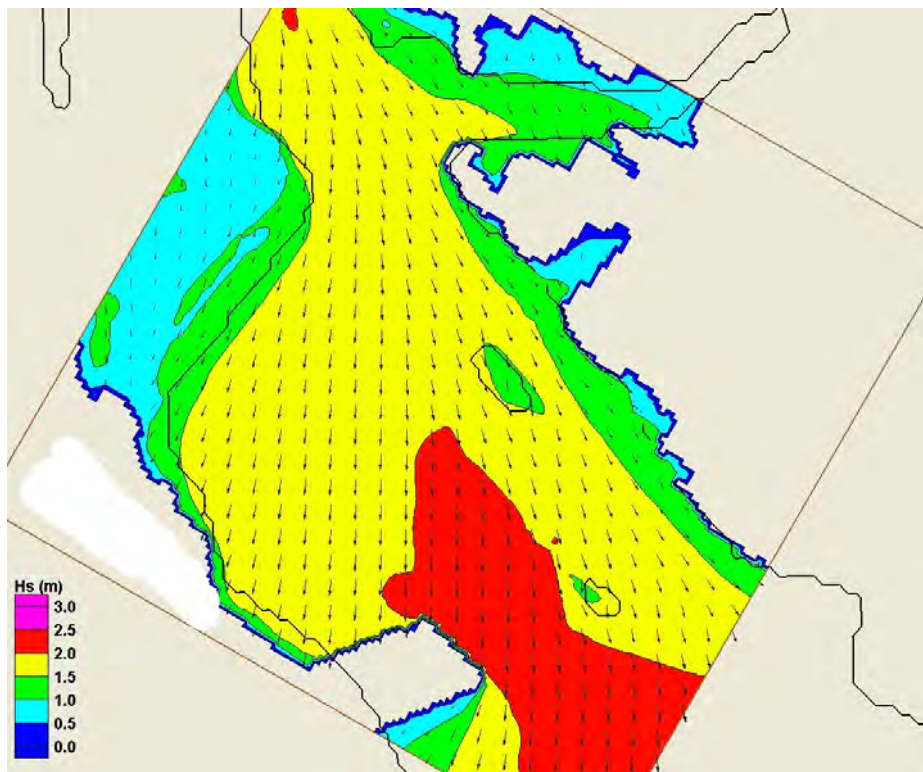
## Appendix B – Modified Wave Conditions Plots

(Update of figures from Appendix G of Western Basin EIS)

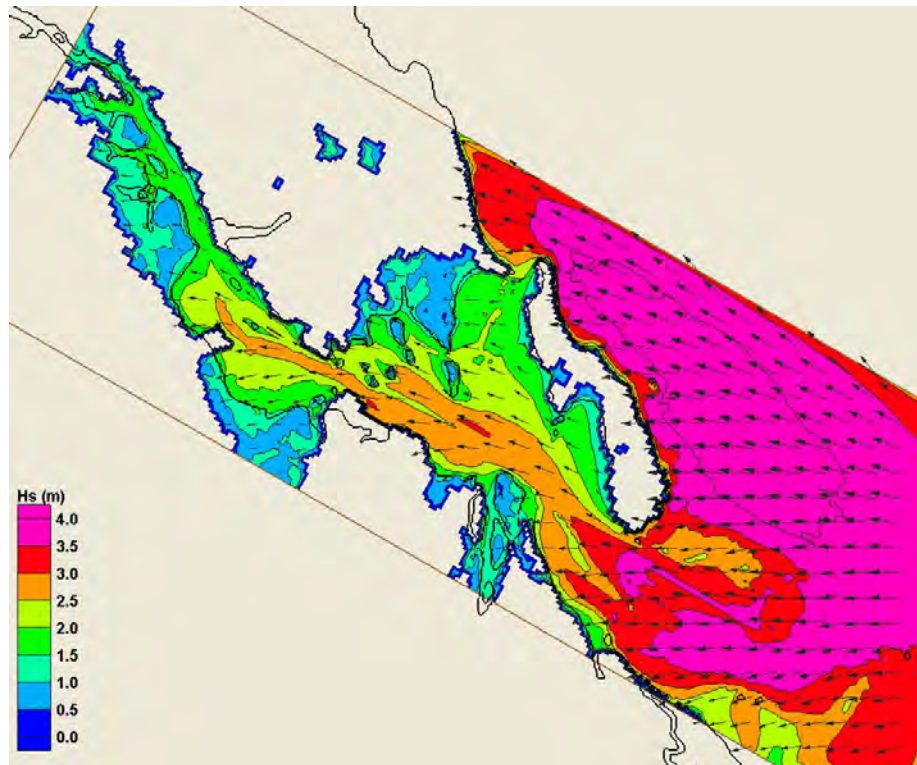




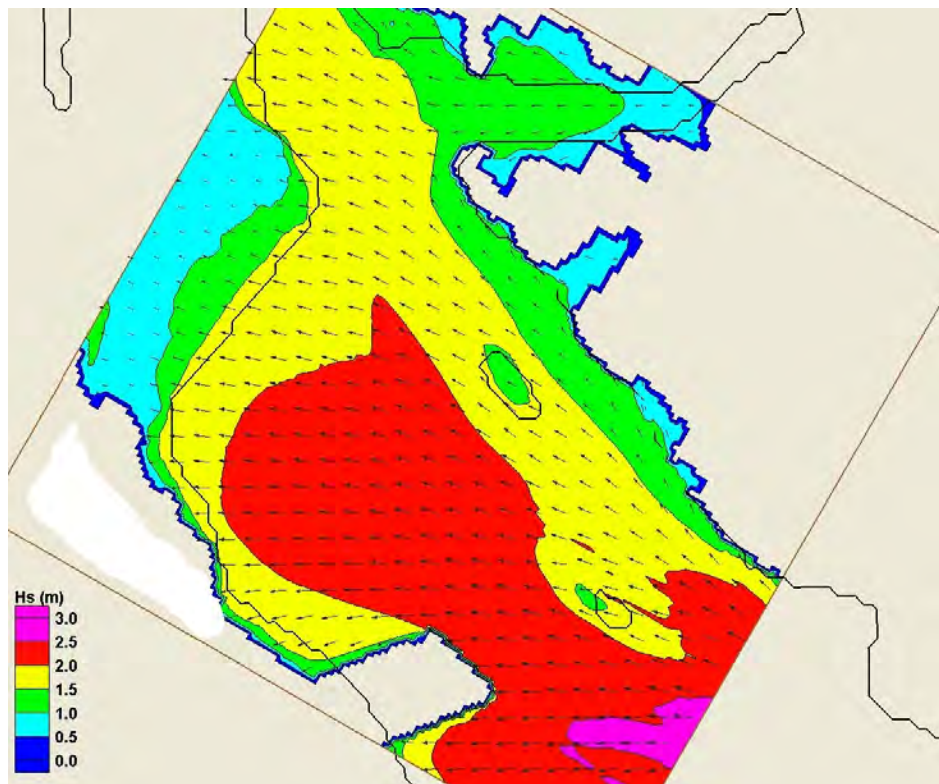
**Figure 0-1 Modelled Significant Wave Height for Extreme Wave Scenario 1 (Northerly Wind) - Base Case (Regional Model)**



**Figure 0-2 Modelled Significant Wave Height for Extreme Wave Scenario 1 (Northerly Wind) - Base Case (Local Model)**



**Figure 0-3 Modelled Significant Wave Height for Extreme Wave Scenario 4 (Easterly Wind) - Base Case (Regional Model)**



**Figure 0-4 Modelled Significant Wave Height for Extreme Wave Scenario 4 (Easterly Wind) - Base Case (Local Model)**



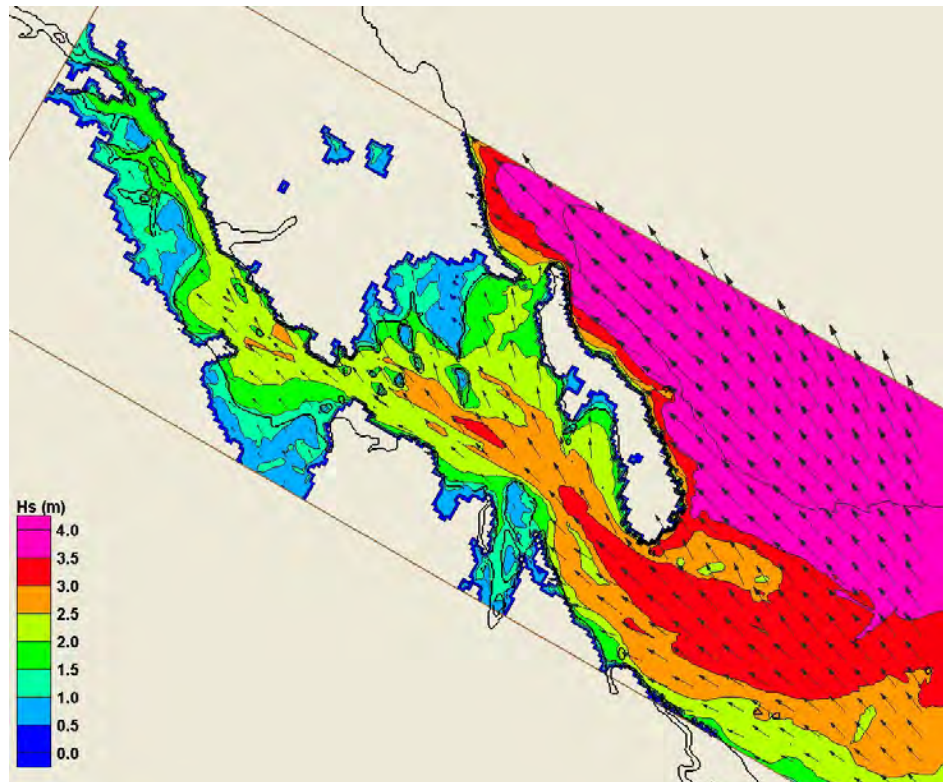


Figure 0-5 Modelled Significant Wave Height for Extreme Wave Scenario 6 (Southeasterly Wind) - Base Case (Regional Model)

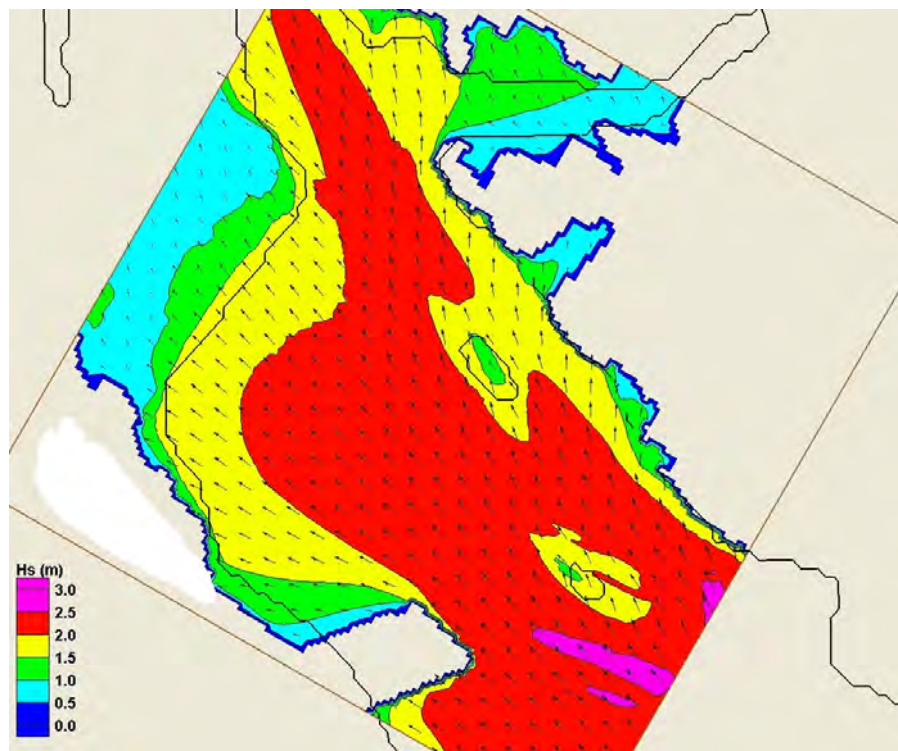
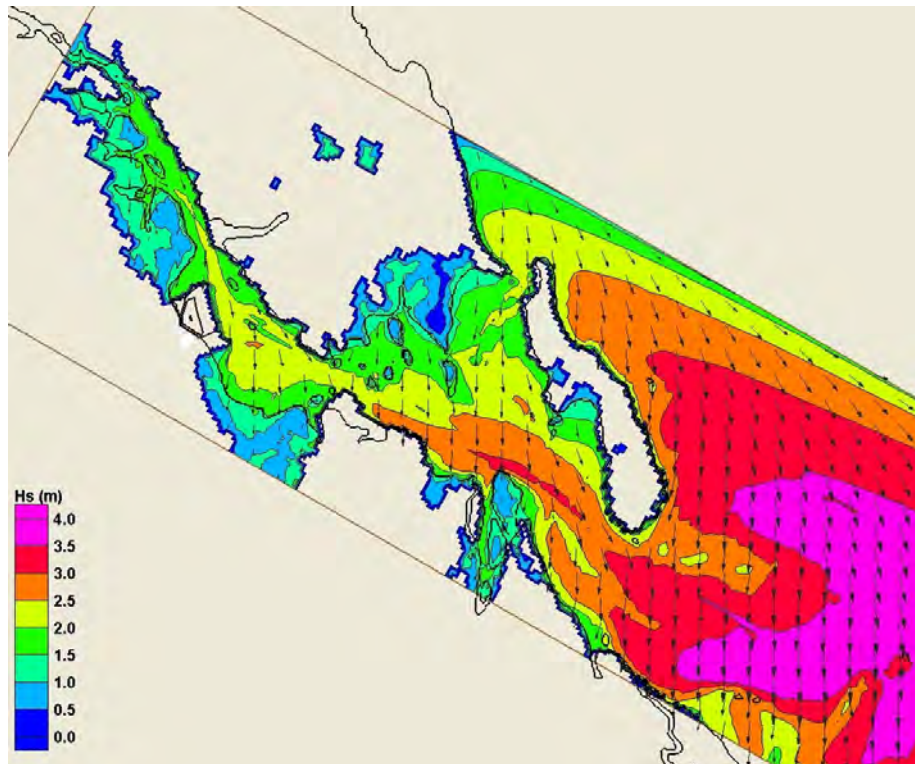
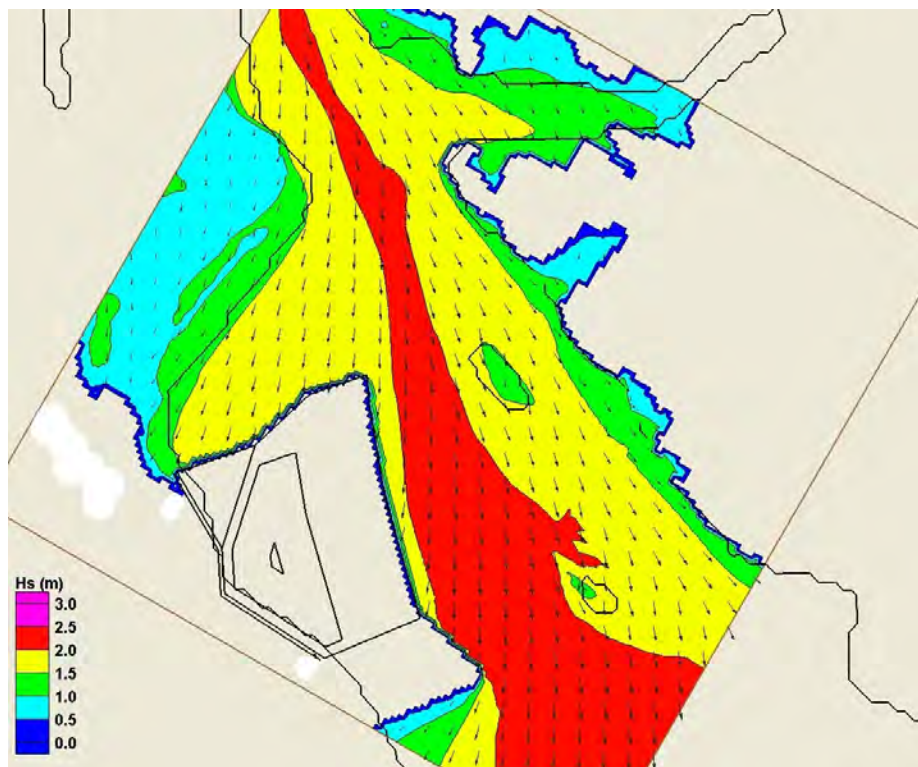


Figure 0-6 Modelled Significant Wave Height for Extreme Wave Scenario 6 (Southeasterly Wind) - Base Case (Local Model)

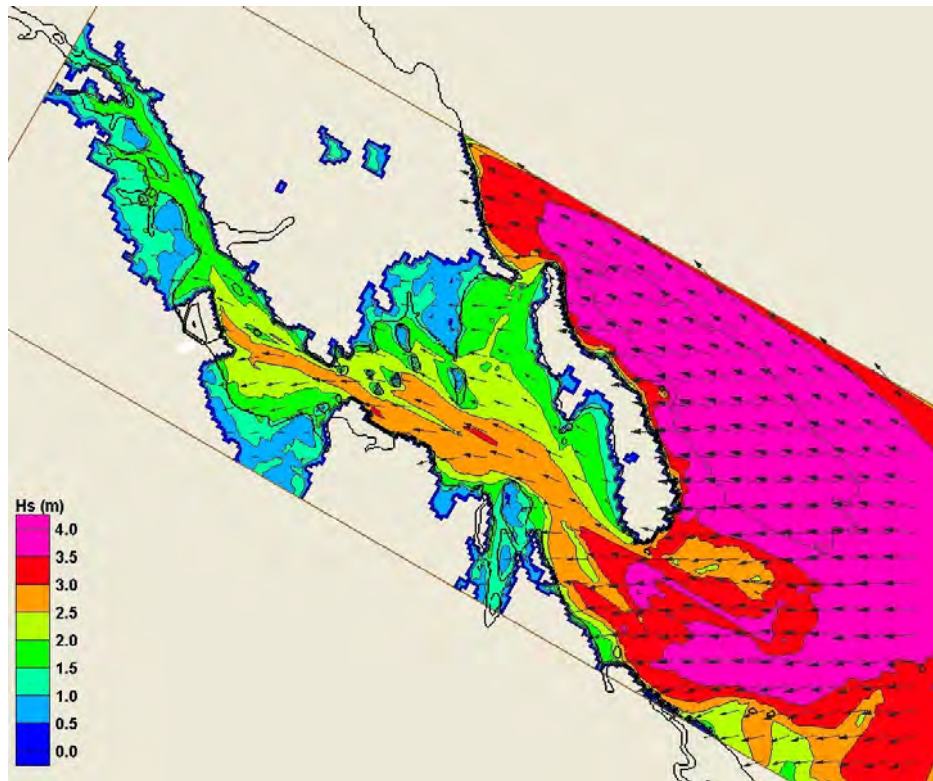


**Figure 0-7 Modelled Significant Wave Height for Extreme Wave Scenario 1 (Northerly Wind) – Development Scenario 3 (Regional Model)**

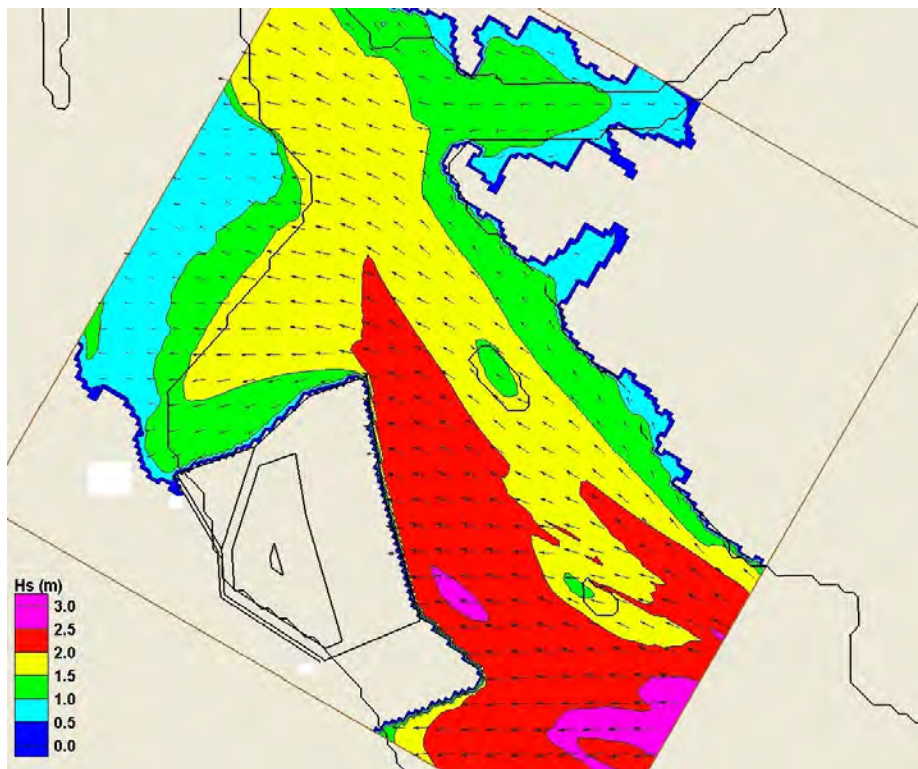


**Figure 0-8 Modelled Significant Wave Height for Extreme Wave Scenario 1 (Northerly Wind) - Development Scenario 3 (Local Model)**

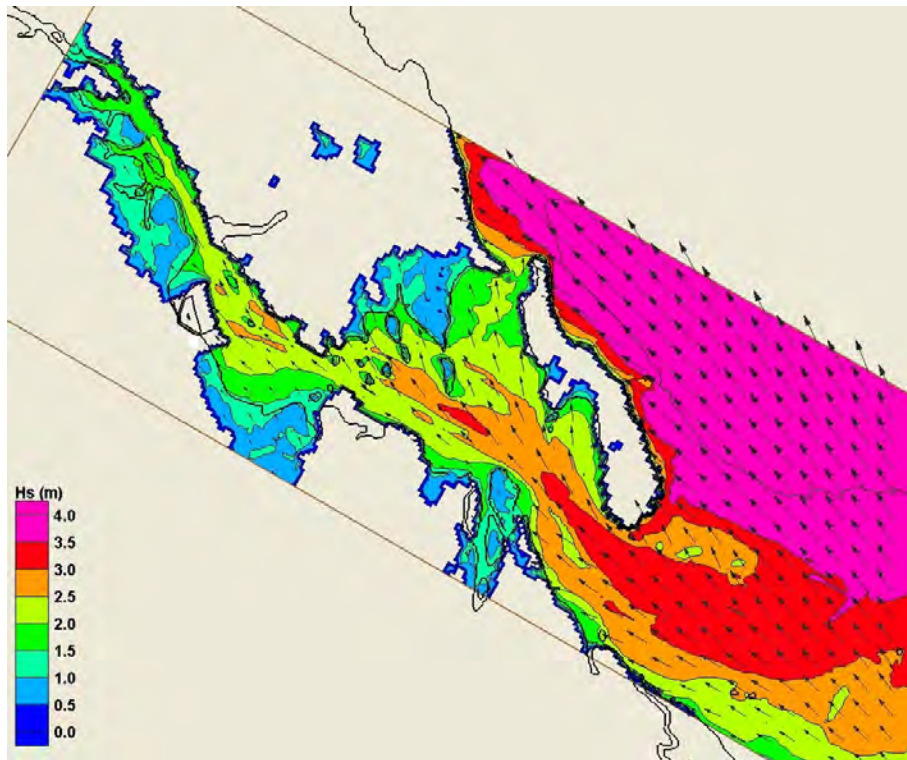




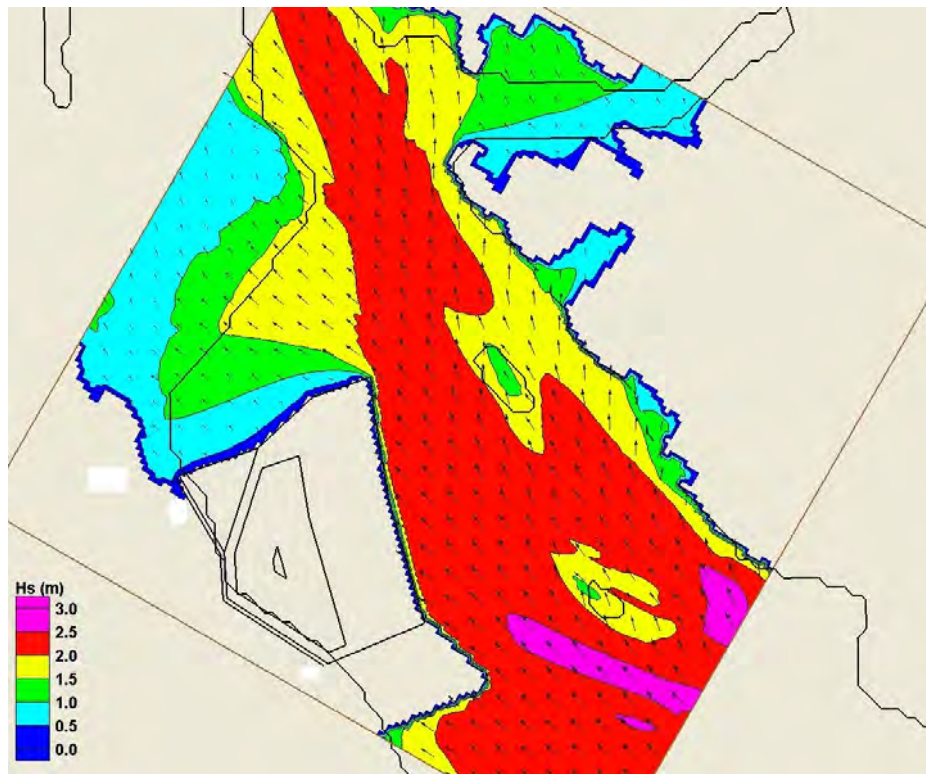
**Figure 0-9 Modelled Significant Wave Height for Extreme Wave Scenario 4 (Easterly Wind) - Development Scenario 3 (Regional Model)**



**Figure 0-10 Modelled Significant Wave Height for Extreme Wave Scenario 4 (Easterly Wind) - Development Scenario 3 (Local Model)**



**Figure 0-11 Modelled Significant Wave Height for Extreme Wave Scenario 6 (Southeasterly Wind) - Development Scenario 3 (Regional Model)**



**Figure 0-12 Modelled Significant Wave Height for Extreme Wave Scenario 6 (Southeasterly Wind) - Development Scenario 3 (Local Model)**