

# LOWER FITZROY RIVER

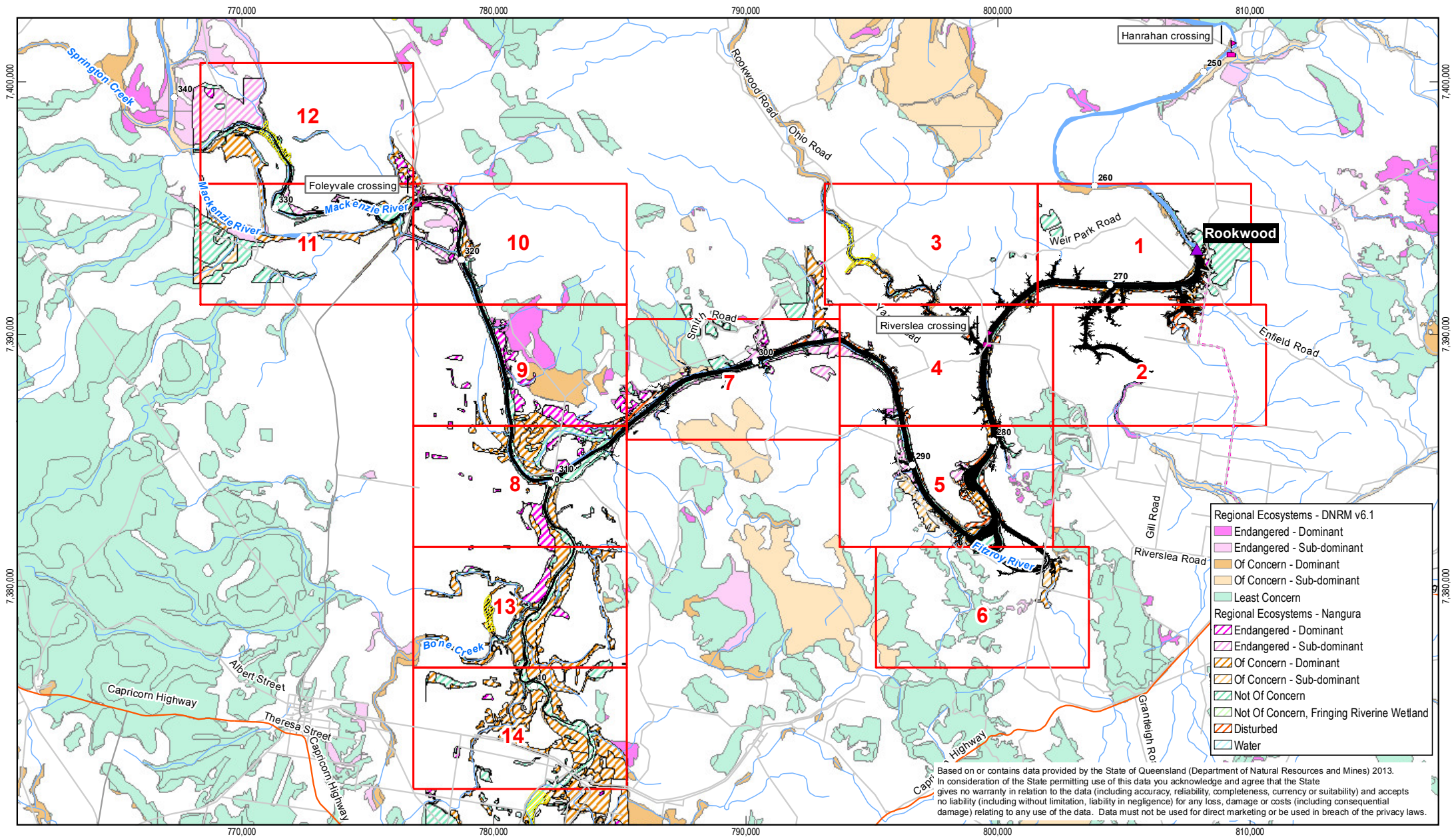
## INFRASTRUCTURE PROJECT

## Appendix I4

### Flora – detailed mapping

Rookwood Weir (FSL 49.0 m) regional ecosystem mapping





1:200,000 (at A4)

0 1.5 3 4.5 6 7.5

Kilometres

Map Projection: Universal Transverse Mercator  
Horizontal Datum: Geocentric Datum of Australia (GDA94)  
Grid: Map Grid of Australia 1994, Zone 55



#### LEGEND

- AMTD (km)
- Weir
- Location
- River Crossing
- Highway
- Major Road
- Secondary Roads
- Access Road
- Impoundment area (FSL 49m)
- Waterway
- Watercourse
- Grid Index
- Essential Habitat



CLIENTS | PEOPLE | PERFORMANCE



Gladstone Area Water Board, SunWater  
Lower Fitzroy River Infrastructure Project

Job Number 41-20736  
Revision A  
Date 25 Jul 2014

Rookwood (FSL 49.0 m)  
regional ecosystem mapping

Appendix I4  
Index Map

G:\41\20736\GIS\Projects\MXD\200\_Report\4120736\_347\_rev\_a.mxd

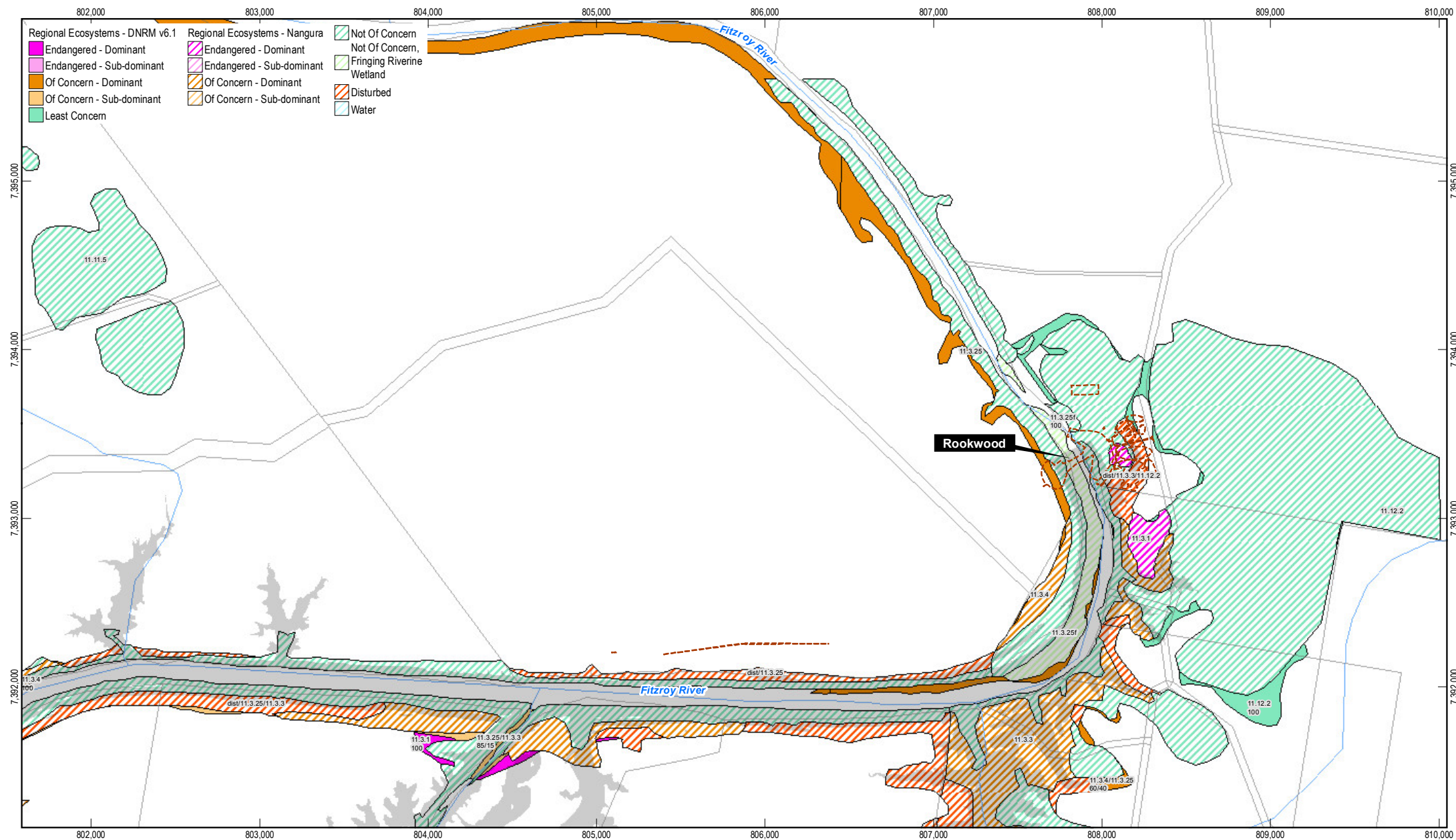
Copyright: This document is and shall remain the property of GHD. The document may only be used for the purpose for which it was produced. Unauthorised use of this document in any way is prohibited. © 2013.

© 2014. While GHD has taken care to ensure the accuracy of this product, GHD, DNRN, NES, SUNWATER and GA make no representations or warranties about its accuracy, completeness or suitability for any particular purpose. GHD, DNRN, NES, SUNWATER and GA cannot accept liability of any kind (whether in contract, tort or otherwise) for any expenses, losses, damages and/or costs (including indirect or consequential damage) which are or may be incurred as a result of the product being inaccurate, incomplete or unsuitable in any way and for any reason.

Data Sources: © Copyright Commonwealth of Australia (Geoscience Australia): Waterways (2007); Sunwater: Waterways, Weir Locations - 2008; DNRN: Roads - 2010; DNRN/NES: Regional Ecosystems - 2011, Essential Habitat - 2011. Created by: MS

Level 9, 145 Ann St Brisbane QLD 4000 T 61 7 3316 3000 F 61 7 3316 3333 E bnemail@ghd.com.au W www.ghd.com.au



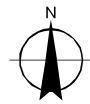


- Regional Ecosystems - DNRM v6.1**
- Endangered - Dominant
  - Endangered - Sub-dominant
  - Of Concern - Dominant
  - Of Concern - Sub-dominant
  - Least Concern
- Regional Ecosystems - Naungura**
- Endangered - Dominant
  - Endangered - Sub-dominant
  - Of Concern - Dominant
  - Of Concern - Sub-dominant
- Not Of Concern  
Not Of Concern, Fringing Riverine Wetland  
Disturbed  
Water

1:30,000 (at A4)

0 0.5 1  
Kilometres

Map Projection: Universal Transverse Mercator  
Horizontal Datum: Geocentric Datum of Australia (GDA94)  
Grid: Map Grid of Australia 1994, Zone 55



- LEGEND**
- River Crossing
  - Impoundment Area 49.0 FSL
  - Essential Habitat
  - Property Boundary
  - Construction Footprint
  - Waterway



Gladstone Area Water Board, SunWater  
Lower Fitzroy River Infrastructure Project

Job Number 41-20736  
Revision H  
Date 25 Jul 2014

## Rookwood Weir (FSL 49.0 m) regional ecosystem mapping

### Appendix I4 Sheet 1 of 14

G:\41\20736\GIS\Projects\IMXD\200\_Report\4120736\_057\_RW\_49\_Rev\_H.mxd

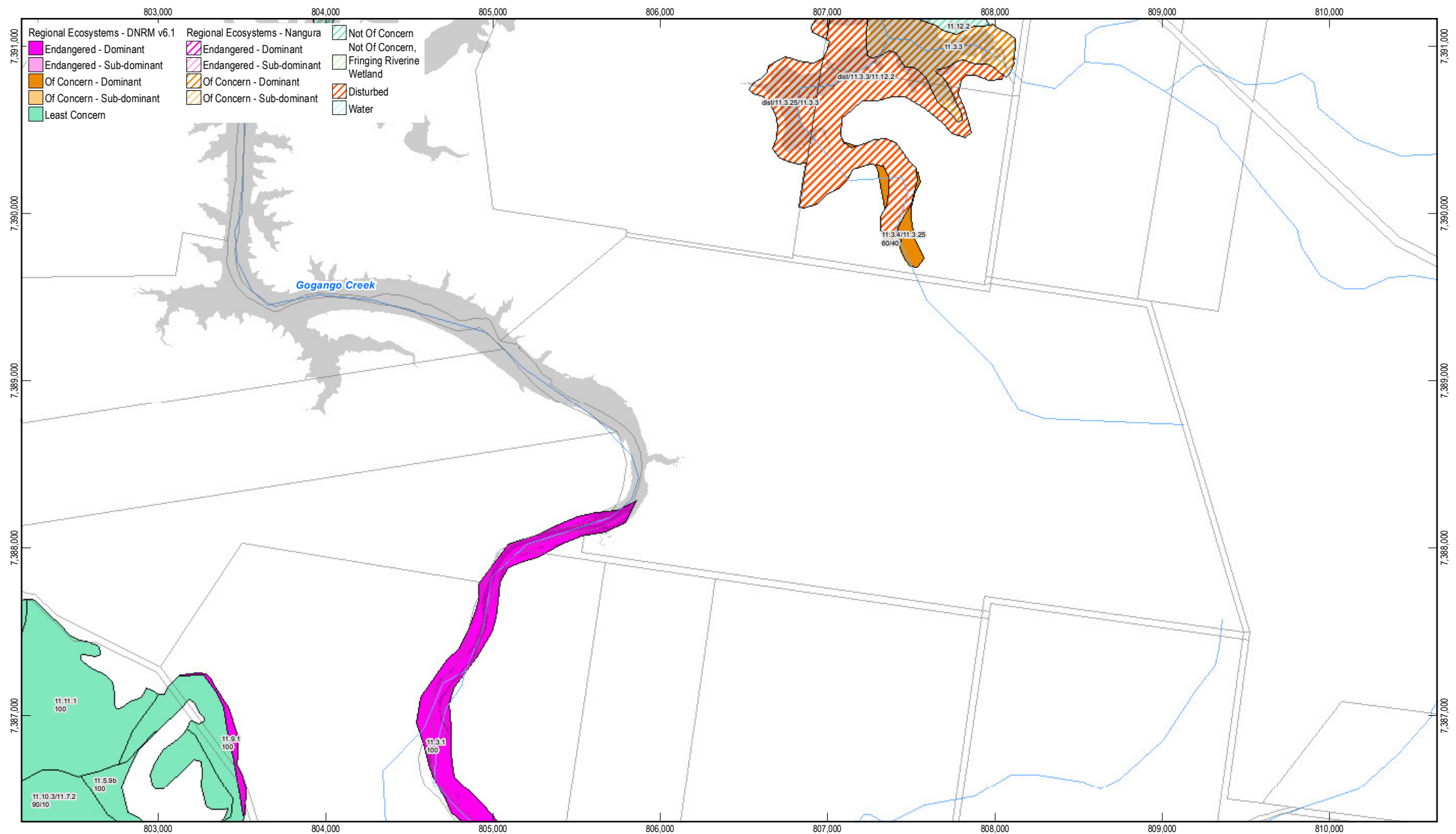
**Copyright:** This document is and shall remain the property of GHD. The document may only be used for the purpose for which it was produced. Unauthorised use of this document in any way is prohibited. © 2013.

© 2013. While GHD has taken care to ensure the accuracy of this product, GHD, DNRM, NES, SUNWATER and GA make no representations or warranties about its accuracy, completeness or suitability for any particular purpose. GHD, DNRM, NES, SUNWATER and GA cannot accept liability of any kind (whether in contract, tort or otherwise) for any expenses, losses, damages and/or costs (including indirect or consequential damage) which are or may be incurred as a result of the product being inaccurate, incomplete or unsuitable in any way and for any reason.

Data Sources: © Copyright Commonwealth of Australia (Geoscience Australia): Waterways (2007); Sunwater: Waterways, Weir Locations - 2008; DNRM: Property Boundary - (2013); Roads - (2010); Naungura: Regional Ecosystems - (2007); DNRM/NES: Regional Ecosystems (2011); Essential Habitat (2011); GHD: Construction footprint(2013). Created by: MS

Level 9, 145 Ann St Brisbane QLD 4000 T 61 7 3316 3000 F 61 7 3316 3333 E bnemail@ghd.com.au W www.ghd.com.au

Based on or contains data provided by the State of Queensland (DNRM) 2013. In consideration of the State permitting use of this data you acknowledge and agree that the State gives no warranty in relation to the data (including accuracy, reliability, completeness, currency or suitability) and accepts no liability (including without limitation, liability in negligence) for any loss, damage or costs (including consequential damage) relating to any use of the data. Data must not be used for direct marketing or be used in breach of the privacy laws.



1:30,000 (at A4)

Map Projection: Universal Transverse Mercator  
Horizontal Datum: Geocentric Datum of Australia (GDA94)  
Grid: Map Grid of Australia 1994, Zone 55

**LEGEND**

River Crossing	Property Boundary
Impoundment Area 49.0 FSL	Construction Footprint
Essential Habitat	Waterway

CLIENTS | PEOPLE | PERFORMANCE

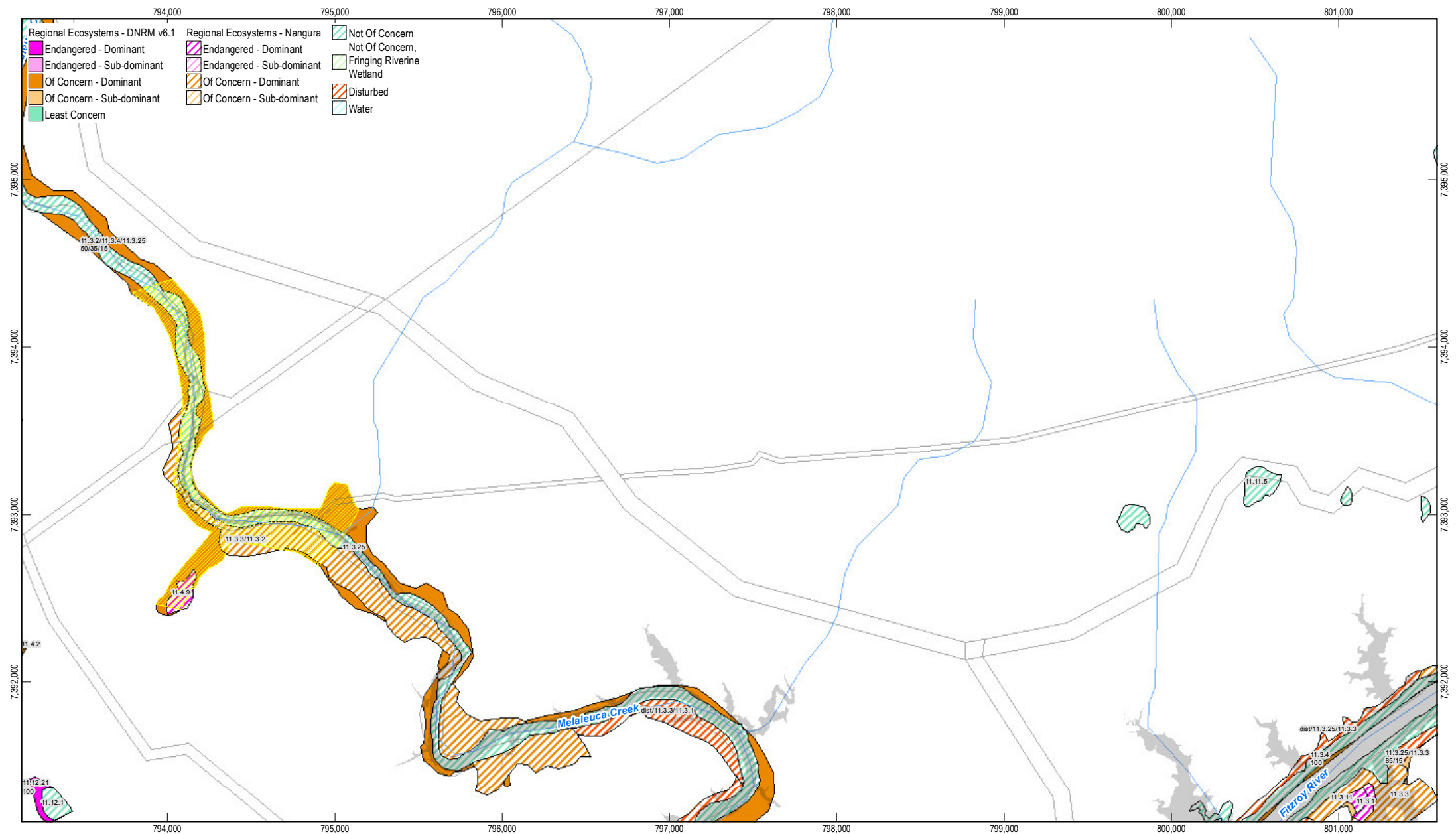
Gladstone Area Water Board, SunWater  
Lower Fitzroy River Infrastructure Project

**Rookwood Weir (FSL 49.0 m)**  
regional ecosystem mapping

Job Number 41-20736  
Revision H  
Date 25 Jul 2014

**Appendix I4**  
**Sheet 2 of 14**





1:30,000 (at A4)

0 0.5 1

Kilometres

Map Projection: Universal Transverse Mercator  
Horizontal Datum: Geocentric Datum of Australia (GDA94)  
Grid: Map Grid of Australia 1994, Zone 55

**LEGEND**

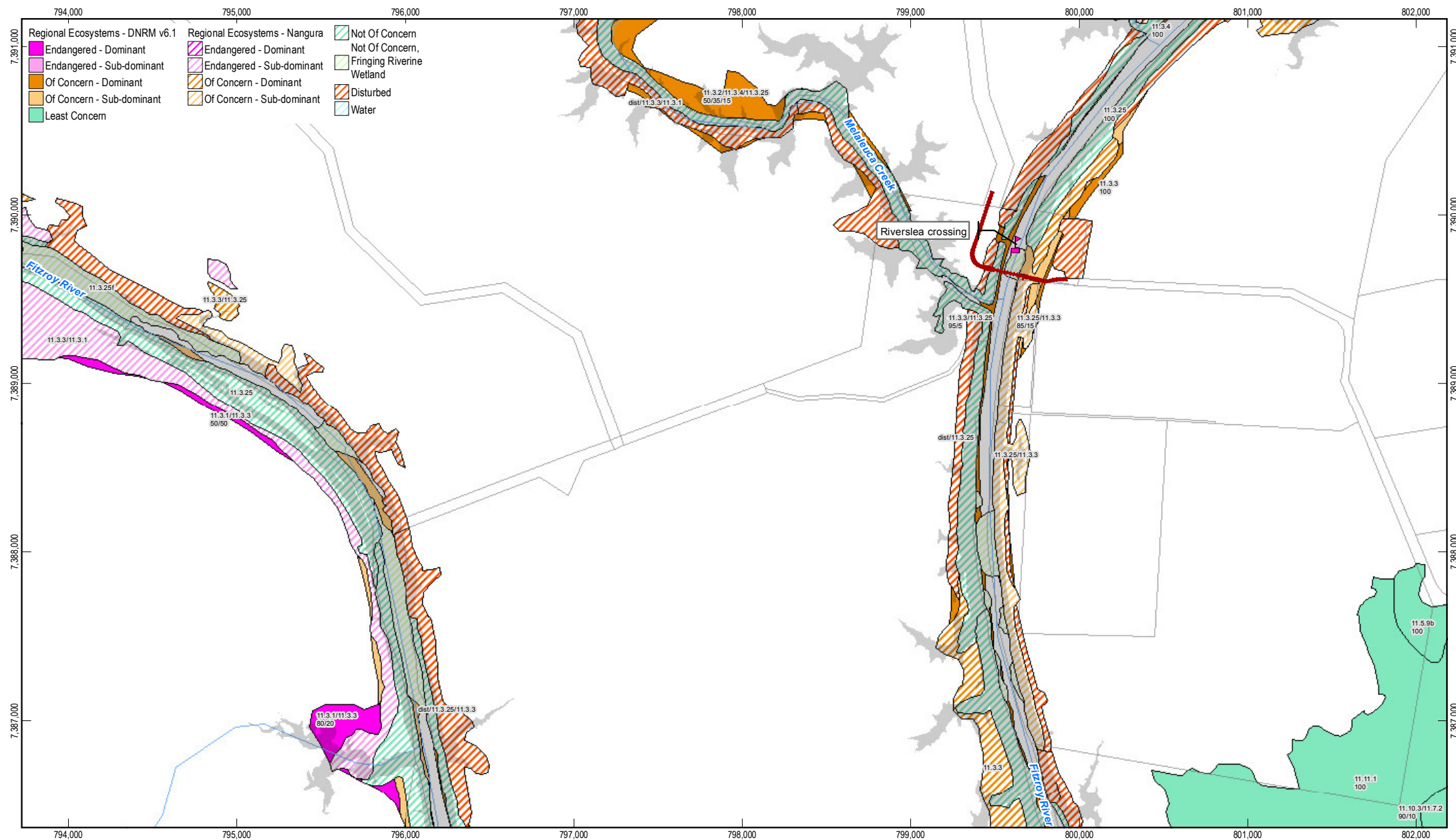
- Property Boundary
- River Crossing
- Construction Footprint
- Impoundment Area
- 49.0 FSL
- Waterway
- Essential Habitat

CLIENTS | PEOPLE | PERFORMANCE

Gladstone Area Water Board, SunWater  
Lower Fitzroy River Infrastructure Project

Job Number | 41-20736  
Revision | H  
Date | 25 Jul 2014

**Rookwood Weir (FSL 49.0 m)**    **Appendix I4**  
**regional ecosystem mapping**    **Sheet 3 of 14**



1:30,000 (at A4)

0 0.5 1

Kilometres

Map Projection: Universal Transverse Mercator  
Horizontal Datum: Geocentric Datum of Australia (GDA94)  
Grid: Map Grid of Australia 1994, Zone 55

N

**LEGEND**

- River Crossing
- Impoundment Area
- Essential Habitat
- Property Boundary
- Construction Footprint
- Waterway

CLIENTS | PEOPLE | PERFORMANCE

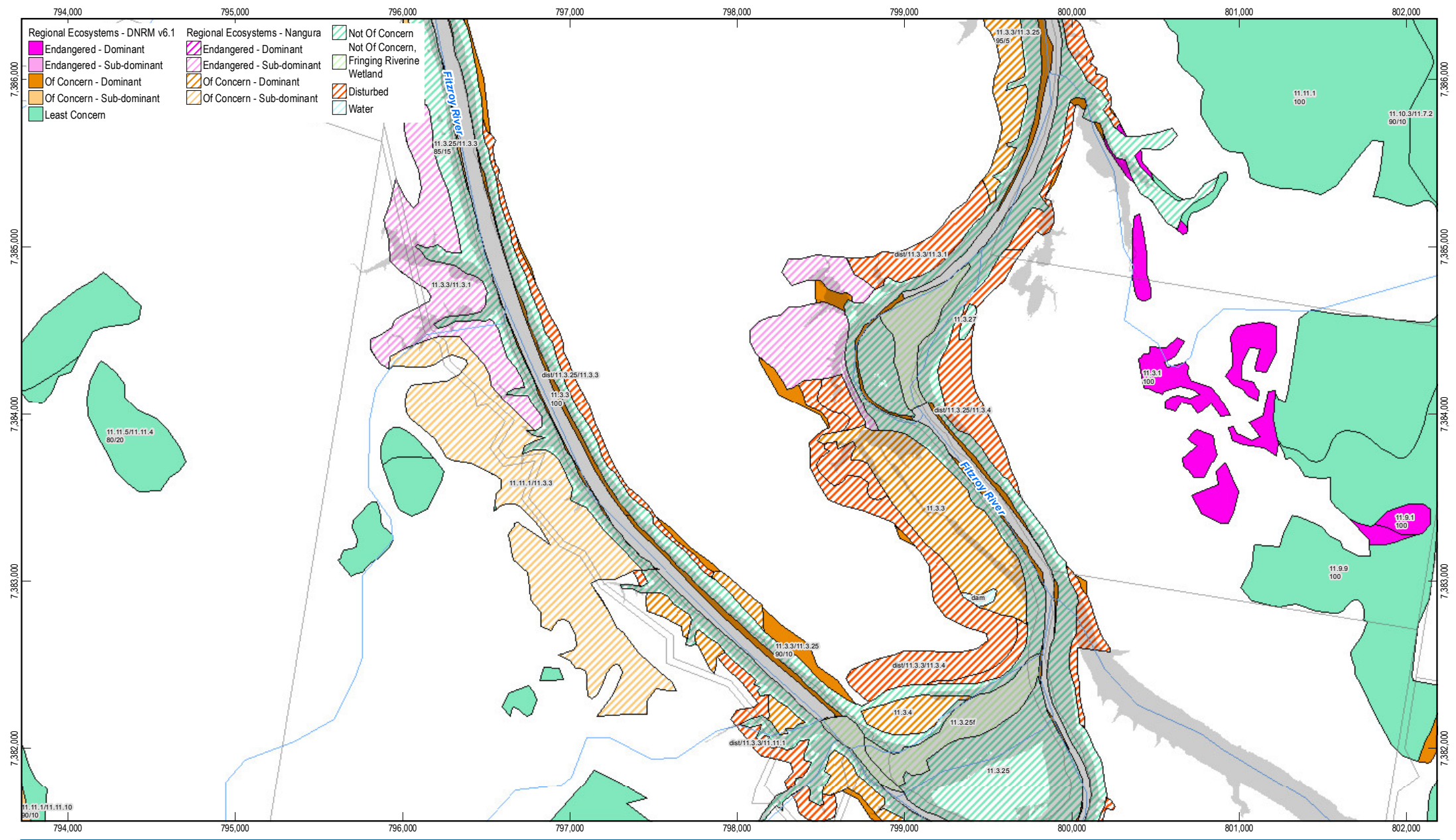
Gladstone Area Water Board, SunWater  
Lower Fitzroy River Infrastructure Project

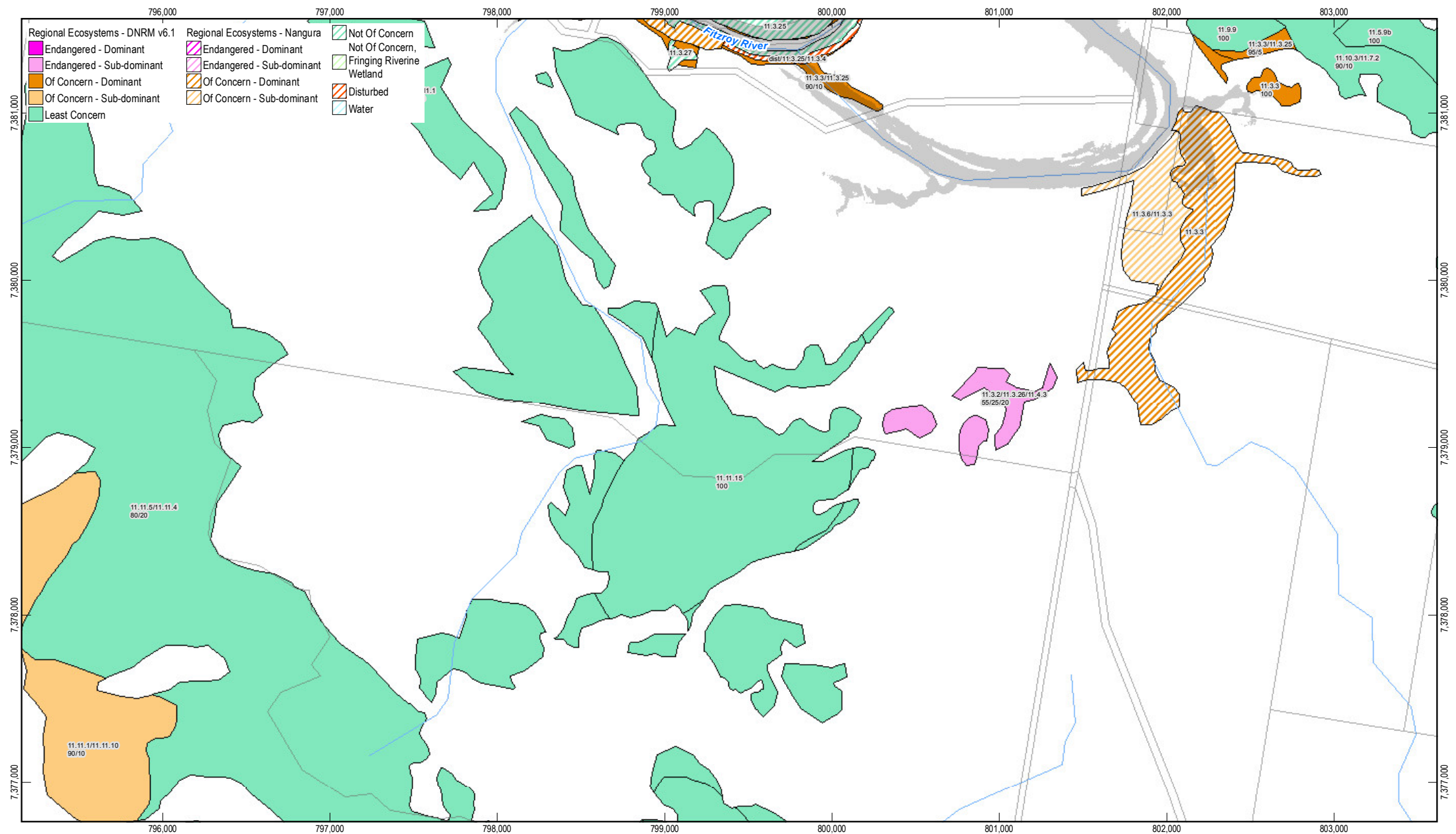
Job Number 41-20736  
Revision H  
Date 25 Jul 2014

**Rookwood Weir (FSL 49.0 m)**  
regional ecosystem mapping

**Appendix I4**  
**Sheet 4 of 14**







1:30,000 (at A4)

Map Projection: Universal Transverse Mercator  
Horizontal Datum: Geocentric Datum of Australia (GDA94)  
Grid: Map Grid of Australia 1994, Zone 55

**LEGEND**

River Crossing	Property Boundary
Impoundment Area 49.0 FSL	Construction Footprint
Essential Habitat	Waterway

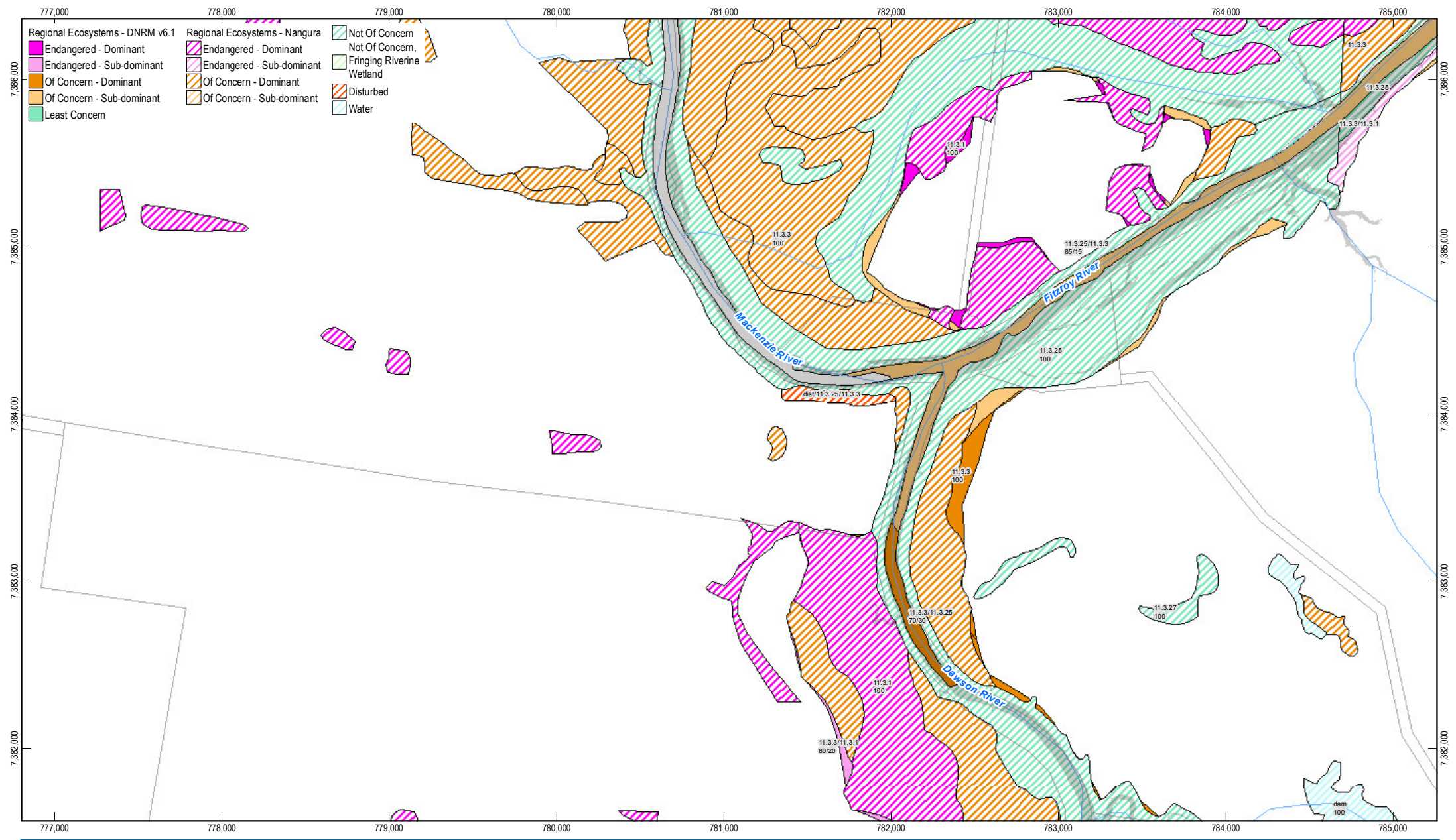
**Rookwood Weir (FSL 49.0 m)**  
**regional ecosystem mapping**

Gladstone Area Water Board, SunWater  
Lower Fitzroy River Infrastructure Project

Job Number	41-20736
Revision	H
Date	25 Jul 2014





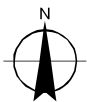


1:30,000 (at A4)

0 0.5 1

Kilometres

Map Projection: Universal Transverse Mercator  
Horizontal Datum: Geocentric Datum of Australia (GDA94)  
Grid: Map Grid of Australia 1994, Zone 55



#### LEGEND

- River Crossing
- Construction Footprint
- Impoundment Area 49.0 FSL
- Essential Habitat
- Property Boundary
- Waterway



Gladstone Area Water Board, SunWater  
Lower Fitzroy River Infrastructure Project

Job Number 41-20736  
Revision H  
Date 25 Jul 2014

Rookwood Weir (FSL 49.0 m) Appendix I4  
regional ecosystem mapping Sheet 8 of 14

G:\41\20736\GIS\Projects\IMXD\200\_Report\4120736\_057\_RW\_49\_Rev\_H.mxd

Copyright: This document is and shall remain the property of GHD. The document may only be used for the purpose for which it was produced. Unauthorised use of this document in any way is prohibited. © 2013.

© 2013. While GHD has taken care to ensure the accuracy of this product, GHD, DNRM, NES, SUNWATER and GA make no representations or warranties about its accuracy, completeness or suitability for any particular purpose. GHD, DNRM, NES, SUNWATER and GA cannot accept liability of any kind (whether in contract, tort or otherwise) for any expenses, losses, damages and/or costs (including indirect or consequential damage) which are or may be incurred as a result of the product being inaccurate, incomplete or unsuitable in any way and for any reason.

Data Sources: © Copyright Commonwealth of Australia (Geoscience Australia): Waterways (2007); Sunwater: Waterways, Weir Locations - 2008; DNRM: Property Boundary - (2013); Roads - (2010); Naungura: Regional Ecosystems - (2007); DNRM/NES: Regional Ecosystems (2011), Essential Habitat (2011); GHD: Construction footprint(2013). Created by: MS

Level 9, 145 Ann St Brisbane QLD 4000 T 61 7 3316 3000 F 61 7 3316 3333 E bnemail@ghd.com.au W www.ghd.com.au

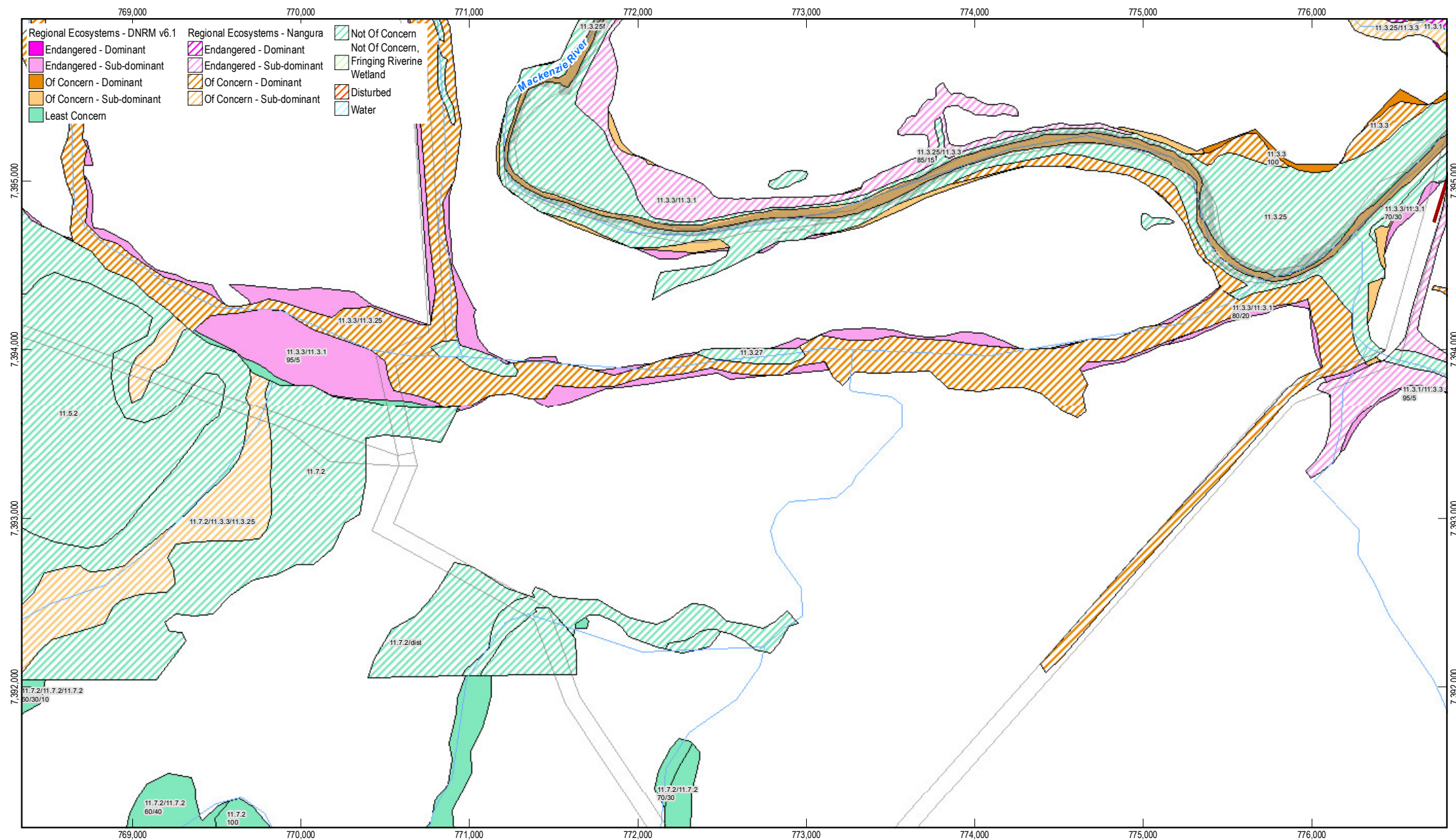
Based on or contains data provided by the State of Queensland (DNRM) 2013. In consideration of the State permitting use of this data you acknowledge and agree that the State gives no warranty in relation to the data (including accuracy, reliability, completeness, currency or suitability) and accepts no liability (including without limitation, liability in negligence) for any loss, damage or costs (including consequential damage) relating to any use of the data. Data must not be used for direct marketing or be used in breach of the privacy laws.











1:30,000 (at A4)

Map Projection: Universal Transverse Mercator  
Horizontal Datum: Geocentric Datum of Australia (GDA94)  
Grid: Map Grid of Australia 1994, Zone 55

N

**LEGEND**

River Crossing	Property Boundary
Impoundment Area 49.0 FSL	Construction Footprint
Essential Habitat	Waterway

CLIENTS | PEOPLE | PERFORMANCE

Gladstone Area Water Board

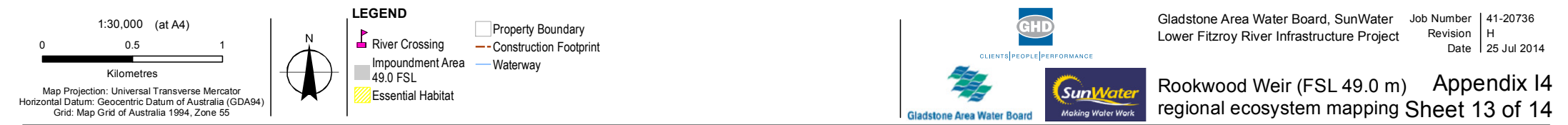
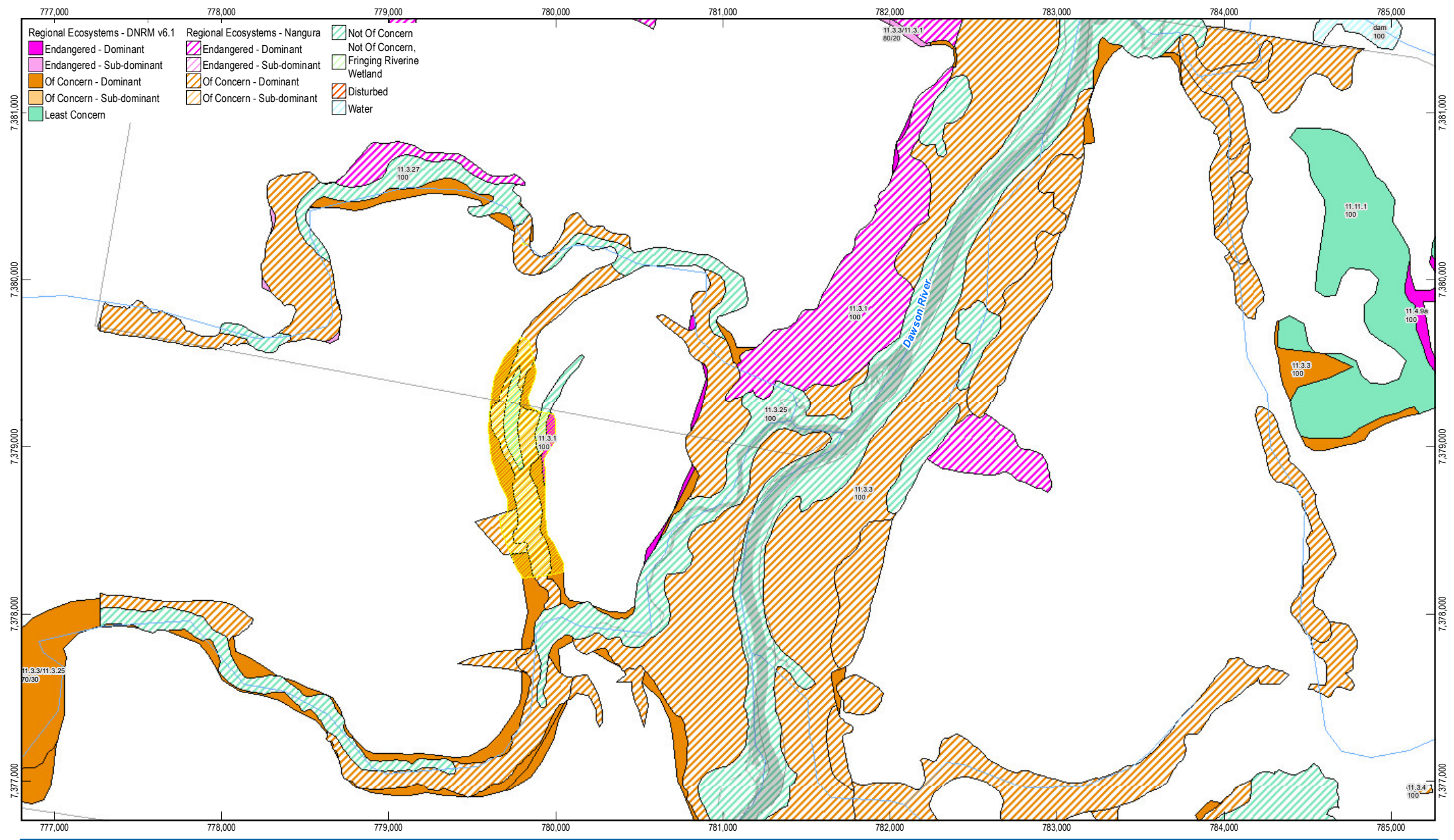
Gladstone Area Water Board, SunWater  
Lower Fitzroy River Infrastructure Project

Job Number	41-20736
Revision	H
Date	25 Jul 2014

**Rookwood Weir (FSL 49.0 m)**     **Appendix I4**  
**regional ecosystem mapping Sheet 11 of 14**







G:\41\20736\GIS\Projects\MXD\200\_Report\4120736\_RW\_49\_Rev\_H.mxd

Copyright: This document is and shall remain the property of GHD. The document may only be used for the purpose for which it was produced. Unauthorised use of this document in any way is prohibited. © 2013.

© 2013. While GHD has taken care to ensure the accuracy of this product, GHD, DNRM, NES, SUNWATER and GA make no representations or warranties about its accuracy, completeness or suitability for any particular purpose. GHD, DNRM, NES, SUNWATER and GA cannot accept liability of any kind (whether in contract, tort or otherwise) for any expenses, losses, damages and/or costs (including indirect or consequential damage) which are or may be incurred as a result of the product being inaccurate, incomplete or unsuitable in any way and for any reason.

Data Sources: © Copyright Commonwealth of Australia (Geoscience Australia): Waterways (2007); Sunwater: Waterways, Weir Locations - 2008; DNRM: Property Boundary - (2013); Roads - (2010); Naungura: Regional Ecosystems - (2007); DNRM/NES: Regional Ecosystems (2011); Essential Habitat (2011); GHD: Construction footprint(2013). Created by: MS

Level 9, 145 Ann St Brisbane QLD 4000 T 61 7 3316 3000 F 61 7 3316 3333 E bnemail@ghd.com.au W www.ghd.com.au

Based on or contains data provided by the State of Queensland (DNRM) 2013. In consideration of the State permitting use of this data you acknowledge and agree that the State gives no warranty in relation to the data (including accuracy, reliability, completeness, currency or suitability) and accepts no liability (including without limitation, liability in negligence) for any loss, damage or costs (including consequential damage) relating to any use of the data. Data must not be used for direct marketing or be used in breach of the privacy laws.



