

LOWER FITZROY RIVER

INFRASTRUCTURE PROJECT

Appendix B

Consultation material



THIS PAGE IS LEFT INTENTIONALLY BLANK

LOWER FITZROY RIVER

INFRASTRUCTURE PROJECT

Appendix B

Public notices

THIS PAGE IS LEFT INTENTIONALLY BLANK

Information relating to the Expression of Interest and Prequalification forms can be obtained by contacting Mr Phil Byrne, Project Manager, Beacon Consulting through email at 4913@beaconconsulting.com.au.

The closing date for lodgement of Prequalification forms is Friday, 31st July 2015 at 3.00pm, PNG Australian Eastern Standard Time.

Authorised by: Mr Loi M Bakani, CMG Governor

PRIVACY POLICY

Our Privacy Policy includes important information about our collection, use and disclosure of your personal information (including to provide you with targeted advertising based on your online activities). It explains that if you do not provide us with information we have requested from you, we may not be able to provide you with the goods and services you require. It also explains how you can access or seek correction of your personal information, how you can complain about a breach of the Australian Privacy Principles and how we will deal with a complaint of that nature.

You can read our Privacy Policy at www.newscompastrailprivacy.com

ADVERTISING TERMS AND CONDITIONS

Every Advertisement submitted for publication is subject to Publisher's approval. Publisher may at its absolute discretion at any time refuse to publish or distribute any advertisement and cancel a campaign. Publisher may, but is not obliged to, under pressure of deadline and without prior consultation or notice to Advertiser, amend any Advertisement in any terms whatsoever. The positioning and placement of an Advertisement is at the discretion of Publisher. Publisher has the right, and at the right to permit other persons, to republish any Advertisement in any print, electronic or digital form for any purpose. Each advertisement must comply with and is subject to the full set of Advertising terms and conditions available at <http://www.newscompastrail.com.au/terms>

By placing an advertisement with us for publication, you are agreeing to our Privacy Policy and to our full advertising terms and conditions.

DEATH & FUNERAL NOTICES

www.theaustralian.com.au

BOYLE, Marie Constance MBE OAM

Died peacefully at Helping Hand, North Adelaide on July 13, 2015. Aged 82 years.

Dearly beloved wife of Michael (deceased). Step mother of Chris, Fran and David. Grandmother of Clare, Leo, Benjamin, Louise, Frederick and Thomas. Daughter of Muriel and Paddy Sullivan (both deceased). Sister of Terry and Tony (deceased). Sister-in-law of Doug and Miriam (deceased). Aunt of Susan, Sara, Judith, Paul, Ruth and Thirza. Dearly loved and sadly missed by all her relatives and friends.

Sincere thanks to the staff at Helping Hand, North Adelaide for their wonderful care and support.

Marie's family and friends are advised that her Requiem Mass will be celebrated at St Laurence's Catholic Church, 134 Buxton Street, North Adelaide, on MONDAY, July 20, 2015, commencing at 10:00 a.m.

Marie will be laid to rest at the Edmund Cemetery, Golden Rian Lane, Edmund Queensland, on TUESDAY, July 21, 2015 at 10:00 a.m. In lieu of floral tributes, a donation in memory of Marie may be forwarded to the Australian Red Cross. Envelopes will be available at the Church.

BLACKWELL FUNERALS



Australian Government
Australian Grape and Wine Authority



CALL FOR APPLICATIONS

2015-16 priority-driven, collaborative RD&E projects

The Australian Grape and Wine Authority (AGWA), trading as Wine Australia, invests in research, development and extension (RD&E) from vine to glass to support a competitive Australian wine sector. We invite applications for priority-driven, collaborative RD&E projects to commence in 2015-16 in the areas of:

- Customer insights
- Digital viticulture

For further information, and current gaps analyses, visit the Wine Australia RD&E website www.research.wineaustralia.com or contact Wine Australia on 08 8228 2000.

Key dates:

- Monday 20 July 2015: Opening date for customer insights and digital viticulture preliminary project applications.
- Friday 14 August 2015: Closing date for customer insights and digital viticulture preliminary project applications.
- Friday 2 October 2015: Closing date for customer insights and digital viticulture final project applications.

GT0302

GE Capital Finance Australia provides credit for a range of different credit cards, the changes that we're making aim to align some of our Terms & Conditions. This is why you'll see a mixture of cards and changes below.

All changes are effective from the 22nd September 2015.

AES Creditline, GO MasterCard & GE Money MasterCard

Card replacement fee

We are reducing our Card replacement fee from \$10 to \$0.

Payment handling fee

The description of the payment handling fee will be changing from "A payment handling fee will be debited to the account on each occasion on which you make a payment on the account at any Australia Post outlet" to "A payment handling fee will be charged to your account each time you make a payment to your account, except that no fee is payable for payments made by mail, by direct debit or by BPAY®."

Increase The payment handling fee will be increasing from \$2.00 to \$2.50.

28 Degrees Platinum MasterCard and Gem Visa Card

Payment handling fee

The description of the payment handling fee will be changing from "A payment handling fee will be debited to the account on each occasion on which you make a payment on the account at any Australia Post outlet" to "A payment handling fee will be charged to your account each time you make a payment to your account, except that no fee is payable for payments made by mail, by direct debit or by BPAY®."

Increase

The payment handling fee will be increasing from \$2.00 to \$2.50.

Myer Visa Card and Myer Card

Payment handling fee

The payment handling fee will be increasing from \$2.00 to \$2.50.

GE Low Rate MasterCard, GE Creditline Card, Buyers Edge Card and Care Credit Card

Payment handling fee

The payment handling fee will be increasing from \$2.00 to \$2.50.

ECO MasterCard holders

Card replacement fee

We are reducing our Card replacement fee from \$10 to \$0.

Document handling fee

Invitation for submissions

Draft environmental impact statement

Lower Fitzroy River Infrastructure project, Central Queensland

The proponents, the Gladstone Area Water Board (GAWB) and SunWater Limited (SunWater), propose to construct the \$495 million Lower Fitzroy River Infrastructure project. The project involves the raising of the existing Eden Bann Weir and construction of a new weir at Rockwood on the Fitzroy River, Central Queensland. The project also includes:

- Potential upgrades to state, local and private roads, bridges and crossings to enable the continuation of existing access arrangements following inundation of the weirs
- Fish and turtle passage structures on the weirs

Eden Bann Weir is located approximately 62 kilometres north-west of Rockhampton. The proposed Rockwood Weir site is approximately 75 kilometres north of Gogango adjacent to Thirsty Creek Road. Gogango is approximately 66 kilometres south-west of Rockhampton along the Capricorn Highway.

The purpose of the project is to help meet future demand for water from urban populations, industry and potentially agriculture in Rockhampton, Gladstone and the Capricorn Coast regions.

The Coordinator-General has declared this project a 'coordinated project', under section 26(3)(a) of the State Development and Public Works Organisation Act 1972 (SDPWD Act), triggering the requirement for an environmental impact statement (EIS). You are invited to make a submission on the draft EIS including the project's potential environmental impacts and the effectiveness of measures proposed to manage those impacts. The Coordinator-General will consider your submission as part of the evaluation.

The coordinated project is being assessed under the bilateral agreement between the State of Queensland and the Commonwealth. The single EIS addresses State and Commonwealth matters for consideration under the bilateral agreement.

The Australian Government Minister for the Environment has determined that the project is likely to have a significant impact upon matters of national environmental significance, and will require approval under the Environment Protection and Biodiversity Conservation Act 1999 (EPBC Act) before it can proceed. The relevant matters under the EPBC Act are world heritage properties (sections 12 & 15A), national heritage places (sections 15B & 15C), listed threatened species and communities (sections 18 & 18A) and listed migratory species (sections 20 & 20A). The Minister will rely on the outcomes of the Coordinator-General's assessment process, including any public submissions, in making a decision.

How to make a submission

For information about making a 'properly made' submission, refer to the fact sheet Have your say on environmental impact assessment documents and accompanying submission form, available online and at the public display locations shown below.

The draft EIS is available from <https://haveyoursay.dsd.qld.gov.au/coordinator-general/lower-fitzroy>

Order a free electronic copy or purchase a printed copy by telephoning the proponent on 1800 423 213 or emailing fitzroyweirs@qld.gov.au. The draft EIS will be available to view between 20 July 2015 and 31 August 2015 at:

- Emerald Library, 44 Borilla Street, Emerald, QLD
- Gogango State School, 10 Wills Street, Gogango, QLD
- Rockhampton Regional Library (Southside), 230 Boulsover Street, Rockhampton, QLD
- Wooralbinda Aboriginal Shire Council, 112 Munnis Drive, Wooralbinda, QLD
- Yeppoon Library, John Street, Yeppoon, QLD
- State Library of Queensland, Cultural Centre, Stanley Place, South Bank, Brisbane, QLD
- National Library of Australia, Parkes Place, Canberra, ACT

Send your submission using one of the following methods:

Online: <https://haveyoursay.dsd.qld.gov.au/coordinator-general/lower-fitzroy>

Email: lowerfitzroyinfrastructureproject@coordinator-general.qld.gov.au

Post: Coordinated Project Delivery

Office of the Coordinator-General

PO Box 5517

City East QLD 4002 Australia

Fax: (07) 3220 6502

SUBMISSIONS CLOSE AT 5 PM ON 31 AUGUST 2015

Notes: While you are encouraged to use the submission form, it is not mandatory. We will provide the project proponent with a full copy of your submission. If you have special communication needs, telephone 61 7 7452 7458 to make alternative submission arrangements.

THE WEEKEND AUSTRALIAN 18-19 JULY 2015

public notices

public notices

Department of
Environment and Heritage Protection

Coastal Protection and Management Act 1995

Have your say

Changes are proposed to the coastal management district declared under the *Coastal Protection and Management Act 1995* by abolishing the existing coastal management district and declaring a new coastal management district (the proposal).

A copy of the proposal is available at www.ehp.qld.gov.au. You may also request a copy by emailing support@ehp.qld.gov.au or telephoning 13 74 68 (13 QGOV). These services are available free of charge.

The public are invited to make written submissions on the proposal

The closing date for submissions is 5pm on Monday 14 September 2015.

Submissions can be emailed to:

coastal.support@ehp.qld.gov.au or posted to:

Director Environment Planning

Department of Environment and Heritage Protection

GPO Box 2454

Brisbane Q 4001

Please specify in your submission whether you agree to have your submission published or if you prefer confidentiality.

This notice is issued under section 57 of the *Coastal Protection and Management Act 1995*.



Queensland
Government

All advertisers
please note:

All advertisements must be
pre-paid prior to deadline.

Payments can be made by Visa,
Mastercard, cheque or money order
by mail or paid at a Newsagent.

CourierMail SundayMail

couriermail.com.au

IMPORTANT NOTICE
TO ALL GARAGE SALE ADVERTISERS

Queensland Newspapers wishes to advise that Brisbane City Council's Local Law on Advertising Signs prohibits the placing of "directional signs" within the road reserve or any other public land i.e. footpaths, medium strips, parks etc. The Local Law applies equally to real estate agents and shop owners as it does to residents holding private garage sales.

Brisbane City Council considers that directional signs can contribute to visual clutter in our residential areas, and detract from the quality of our streetscapes and may result in unacceptable amounts of waste and litter. Council Officers work both during the week and on weekends to ensure Brisbane retains its clean and tidy image. Signs which are contrary to this Local Law (such as directional signs) will be confiscated. Brisbane City Council may also issue the holder of the garage sale with an infringement notice to the value of \$500 for each sign unlawfully displayed.

Don't let lines eat into your garage sale profits. Please ensure any signage is located within your own property only and not located on streets, power poles or any other Council property/asset.

For more information regarding the Signs Local Law contact Brisbane City Council on 07 3403 8888 and/or visit Council's website, <http://www.brisbane.qld.gov.au>

Residents outside the Brisbane City Council area are advised to direct their enquiries to their own local Council Office.

PRIVACY POLICY

Our Privacy Policy includes important information about our collection, use and disclosure of your personal information (including to provide you with targeted advertising based on your online activities). It explains that if you do not provide us with information we have requested from you, we may not be able to provide you with the goods and services you require. It also explains how you can access or seek correction of your personal information, how you can complain about a breach of the Australian Privacy Principles and how we will deal with a complaint of that nature. You can read our Privacy Policy at www.newscompastralia.com.au/privacy.

Office of the Coordinator-General
Invitation for submissions
Draft environmental impact statement
Lower Fitzroy River Infrastructure project,
Central Queensland

The proponents, the Gladstone Area Water Board (GAWB) and SunWater Limited (SunWater), propose to construct the \$495 million Lower Fitzroy River Infrastructure project. The project involves the raising of the existing Eden Bann Weir and construction of a new weir at Rookwood on the Fitzroy River, Central Queensland. The project also includes:

- Potential upgrades to state, local and private roads, bridges and crossings to enable the continuation of existing access arrangements following inundation of the weirs
- Fish and turtle passage structures on the weirs

Eden Bann Weir is located approximately 62 kilometres north-west of Rockhampton. The proposed Rookwood Weir site is approximately 15 kilometres north of Gogango adjacent to Thirsty Creek Road. Gogango is approximately 66 kilometres south-west of Rockhampton along the Capricorn Highway.

The purpose of the project is to help meet future demand for water from urban populations, industry and potentially agriculture in Rockhampton, Gladstone and the Capricorn Coast regions.

The Coordinator-General has declared this project a 'coordinated project', under section 26(1)(a) of the *State Development and Public Works Organisation Act 1971* (SDPO Act), triggering the requirement for an environmental impact statement (EIS). You are invited to make a submission on the draft EIS including the project's potential environmental impacts and the effectiveness of measures proposed to manage those impacts. The Coordinator-General will consider your submission as part of the evaluation.

The coordinated project is being assessed under the bilateral agreement between the State of Queensland and the Commonwealth. The single EIS addresses State and Commonwealth matters for consideration under the bilateral agreement.

The Australian Government Minister for the Environment has determined that the project is likely to have a significant impact upon matters of national environmental significance, and will require approval under the *Environment Protection and Biodiversity Conservation Act 1999* (EPBC Act) before it can proceed. The relevant matters under the EPBC Act are world heritage properties (sections 12 & 15A), national heritage places (sections 15B & 15C), listed threatened species and communities (sections 18 and 18A) and listed migratory species (sections 20 & 20A). The Minister will rely on the outcomes of the Coordinator-General's assessment process, including any public submissions, in making a decision.

How to make a submission

For information about making a 'properly made' submission, refer to the fact sheet Have your say on *environmental impact assessment documents* and accompanying submission form, available online and at the public display locations shown below.

The draft EIS is available from

<https://haveyoursay.dsd.qld.gov.au/coordinatorgeneral/lower-fitzroy>

Order a free electronic copy or purchase a printed copy by telephoning the proponent on 1800 423 213 or emailing fitzroyweirs@ghd.com.au. The draft EIS will be available to view between 20 July 2015 and 31 August 2015 at:

- Emerald Library, 44 Borilla Street, Emerald, QLD
- Gogango State School, 10 Wills Street, Gogango, QLD
- Rockhampton Regional Library (Southside), 230 Bolsover Street, Rockhampton, QLD
- Woorabinda Aboriginal Shire Council, 112 Munns Drive, Woorabinda, QLD
- Yeppoon Library, John Street, Yeppoon, QLD.
- State Library of Queensland, Cultural Centre, Stanley Place, South Bank, Brisbane, QLD
- National Library of Australia, Parkes Place, Canberra, ACT.

Send your submission using one of the following methods:

Online: <http://haveyoursay.dsd.qld.gov.au/coordinatorgeneral/lower-fitzroy>

Email: lowerfitzroy.infrastructureproject@coordinatorgeneral.qld.gov.au

Post: Project manager—Lower Fitzroy River Infrastructure project

Coordinated Project Delivery

Office of the Coordinator-General

PO Box 15517

City East Qld 4002 Australia

Fax: (07) 3220 6502

SUBMISSIONS CLOSE AT 5 PM ON 31 AUGUST 2015

Notes: While you are encouraged to use the submission form, it is not mandatory. We will provide the project proponent with a full copy of your submission. If you have special communication needs, telephone +61 7 3452 7458 to make alternative submission arrangements.



Queensland
Government

ADVERTISING TERMS AND CONDITIONS

Every Advertisement submitted for publication is subject to Publisher's approval. Publisher may at its absolute discretion at any time refuse to publish or distribute any advertisement and cancel a campaign. Publisher may, but is not obliged to, under pressure of deadline and without prior consultation or notice to Advertiser, amend any Advertisement in any terms whatsoever. The positioning and placement of an Advertisement is at the discretion of Publisher. Publisher has the right, and the right to permit other persons, to republish any Advertisement in any print, electronic or digital form for any purpose. Each advertisement must comply with and is subject to the full set of Advertising terms and conditions available at:

<http://newscompastralia.com.au/adterms>.

By placing an advertisement with us for publication, you are agreeing to our Privacy Policy and to our full advertising terms and conditions.

PAY FOR YOUR
ADVERTISEMENT THE
CONVENIENT WAY
THE COURIER-MAIL
CLASSIFIEDS ACCEPT
THESE CREDIT CARDS



WITNESSES SOUGHT

ST VINCENT'S ORPHANAGE, NUDGE

If you were a resident at St Vincent's Orphanage, Nudgee, between 1960 and 1980 you may be able to assist in claims on behalf of children who were at the orphanage during this time. To assist the victims, we ask that any person with any information contact us at:

(02) 6247 3477

lawyers@porterslawyers.com.au

TOLL FREE: 1800 44 55 44

www.porterslawyers.com.au

Competitions
and Promotions

TERMS AND CONDITIONS OF ENTRY

All The Courier-Mail Competitions and Promotions Terms and Conditions are available on our website: couriermail.com.au/competitions



couriermail.com.au

THE WEEKEND SHOPPER
CONDITIONS AND EXCLUSIONS:

CONDITIONS:

Weekend Shopper special advertising rates are exclusive to private party advertisers only, with domestic quantities and types of goods up to the value of \$10,000.

FREE ADS:

This service is for items to be advertised for sale at less than AUD\$500 in total and is exclusive to online bookings made by private party advertisers only. Charges may apply for ads placed over the phone.

- One (1) item only per free advertisement. Items of a similar nature that fall within the one classification can be in the same advertisement.
- Maximum of 5 free ads per household or phone number, for each edition.
- For one insertion date only.
- Available only for items under \$500 (refer to Exclusions) and must contain one total price of up to \$500 (including give away items), or a price for each item listed, to a total value of under \$500.
- Advertisers can use the number of lines required to adequately describe their articles up to a maximum of 5 lines per advertisement.
- Additional lines can be purchased for \$6 per line.
- The pricing is only available for online bookings made through the Ad Placer tool (OSCA) through couriermail.com.au for ads to be published in The Courier-Mail Weekend Shopper.
- This offer is for bookings made online and by using the Weekend Shopper Ad Form only, charges apply for bookings made by phone and other nononline channels.
- FREE advertisements will not be accepted after online booking deadline 3.45pm Wednesday, for the next Saturday's edition.
- \$500 offer applies until further notice.

FREE AD EXCLUSIONS: all advertisements related to businesses; quantities exceeding normal domestic applications or consumption; commercial breeders or growers; commercial hires, leasing or other fee for use arrangements; items related to on going activities, hobbies, collections or businesses; directly business equipment and/or furniture and/or fittings; wanted to buy advertisements; garage sales; markets and fairs; Internet and Internet services; all animals or plants (except those being given away); pet services; items advertised AUD\$500 or more; tickets for sale/buy; all employment, motor vehicle, real estate, personal, tenders, quotes, notices and services, travel, business opportunities and for auction advertising.

Queensland Newspapers Pty Ltd reserves the right not to publish free advertisements where space within the newspaper is restricted and/or where a suspected breach of the General Terms & Conditions current at the time of publication occurs, including those conditions outlined above.

PAID ADS:

- Full advertising rates apply to all items from \$10,001 in all classifications.
- Items valued at \$1 - \$500 that are excluded from the FREE ad offer are charged at \$14.00. Items valued at \$501 - \$10,000 are charged at \$21.00. Additional lines can be purchased for \$6 per line.
- Advertisements in all classifications for items \$10,000 and under must contain a price or full advertising rates apply (excludes giveaways).

The Publisher reserves the right to decline any advertising deemed to be not in the spirit of this offer, or to change or terminate this offer without further notice. Publisher's normal conditions of acceptance apply.

All Weekend Shopper ads booked must be prepaid prior to deadline. Methods of payment include Visa, Mastercard, Cheque, Money Order or at a Newsagent.

WeekendShopper



call 132 202

Invitation for submissions

Draft environmental impact statement

Lower Fitzroy River Infrastructure project, Central Queensland

The proponents, the Gladstone Area Water Board (GAWB) and SunWater Limited (SunWater), propose to construct the \$495 million Lower Fitzroy River Infrastructure project. The project involves the raising of the existing Eden Bann Weir and construction of a new weir at Rookwood on the Fitzroy River, Central Queensland. The project also includes:

- Potential upgrades to state, local and private roads, bridges and crossings to enable the continuation of existing access arrangements following inundation of the weirs
- Fish and turtle passage structures on the weirs

Eden Bann Weir is located approximately 62 kilometres north-west of Rockhampton. The proposed Rookwood Weir site is approximately 15 kilometres north of Gogango adjacent to Thirsty Creek Road. Gogango is approximately 66 kilometres south-west of Rockhampton along the Capricorn Highway.

The purpose of the project is to help meet future demand for water from urban populations, industry and potentially agriculture in Rockhampton, Gladstone and the Capricorn Coast regions.

The Coordinator-General has declared this project a 'coordinated project', under section 26(1)(a) of the *State Development and Public Works Organisation Act 1971* (SDPWO Act), triggering the requirement for an environmental impact statement (EIS). You are invited to make a submission on the draft EIS including the project's potential environmental impacts and the effectiveness of measures proposed to manage those impacts. The Coordinator-General will consider your submission as part of the evaluation.

The coordinated project is being assessed under the bilateral agreement between the State of Queensland and the Commonwealth. The single EIS addresses State and Commonwealth matters for consideration under the bilateral agreement.

The Australian Government Minister for the Environment has determined that the project is likely to have a significant impact upon matters of national environmental significance, and will require approval under the *Environment Protection and Biodiversity Conservation Act 1999* (Cwlth) (EPBC Act) before it can proceed. The relevant matters under the EPBC Act are world heritage properties (sections 12 & 15A), national heritage places (sections 15B & 15C), listed threatened species and communities (sections 18 and 18A) and listed migratory species (sections 20 & 20A). The Minister will rely on the outcomes of the Coordinator-General's assessment process, including any public submissions, in making a decision.

How to make a submission

For information about making a 'properly made' submission, refer to the fact sheet *Have your say on environmental impact assessment documents* and accompanying submission form, available online and at the public display locations shown below.

The draft EIS is available from <https://haveyoursay.dsd.qld.gov.au/coordinatorgeneral/lower-fitzroy>

Order a free electronic copy or purchase a printed copy by telephoning the proponent on 1800 423 213 or emailing fitzroyweirs@ghd.com.au. The draft EIS will be available to view between 20 July 2015 and 31 August 2015 at:

- Emerald Library, 44 Borilla Street, Emerald, QLD
- Gogango State School, 10 Wills Street, Gogango, QLD
- Rockhampton Regional Library (Southside), 230 Bolsover Street, Rockhampton, QLD
- Woorabinda Aboriginal Shire Council, 112 Munns Drive, Woorabinda, QLD
- Yeppoon Library, John Street, Yeppoon, QLD.
- State Library of Queensland, Cultural Centre, Stanley Place, South Bank, Brisbane, QLD
- National Library of Australia, Parkes Place, Canberra, ACT.

Send your submission using one of the following methods:

Online: <http://haveyoursay.dsd.qld.gov.au/coordinatorgeneral/lower-fitzroy>

Email: lowerfitzroy.infrastructureproject@coordinatorgeneral.qld.gov.au

Post: Project manager—Lower Fitzroy River Infrastructure project
Coordinated Project Delivery
Office of the Coordinator-General
PO Box 15517
City East Qld 4002 Australia

Fax: (07) 3220 6502

SUBMISSIONS CLOSE AT 5 PM ON 31 AUGUST 2015

Notes: While you are encouraged to use the submission form, it is not mandatory. We will provide the project proponent with a full copy of your submission. If you have special communication needs, telephone +61 7 3452 7458 to make alternative submission arrangements.

Rockhampton
Morning Bulletin
Saturday 18th July 2015

THIS PAGE IS LEFT INTENTIONALLY BLANK

LOWER FITZROY RIVER

INFRASTRUCTURE PROJECT

Appendix B

Project update – Winter 2015

THIS PAGE IS LEFT INTENTIONALLY BLANK

LOWER FITZROY RIVER INFRASTRUCTURE PROJECT

PROJECT UPDATE
WINTER 2015

Dear Stakeholder,

The Gladstone Area Water Board and SunWater Limited, as proponents for the Lower Fitzroy River Infrastructure Project, are pleased to advise that the draft environmental impact statement (EIS) has been released for public and agency review and comment.

You are invited to make a submission on the draft EIS including the project's potential environmental impacts and/or the effectiveness of the measures proposed to manage those impacts.

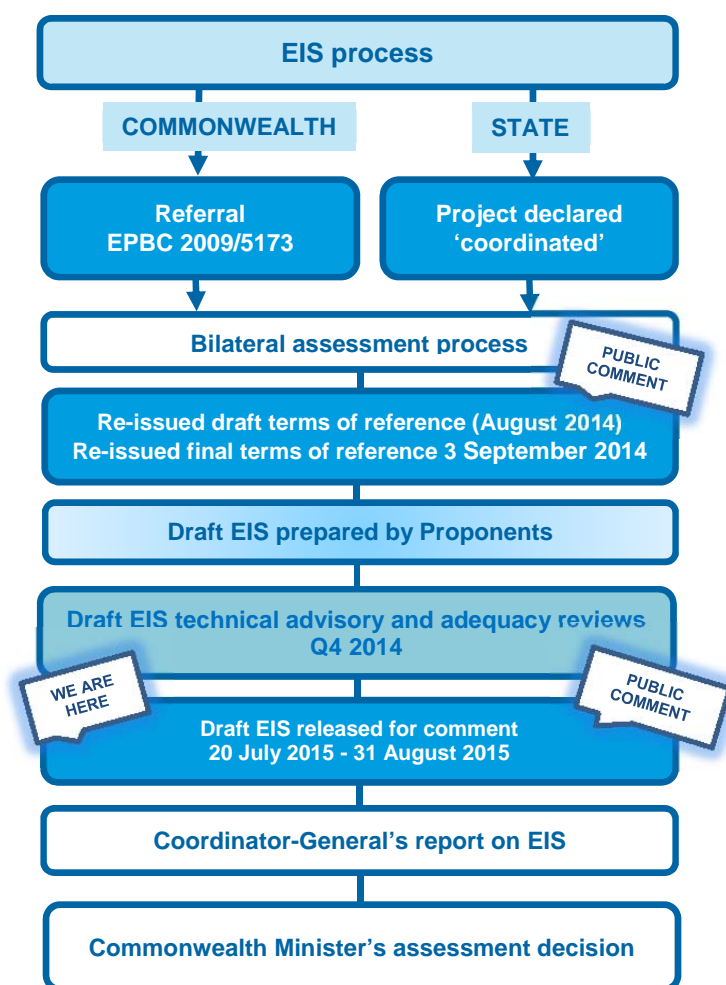
Where can I get a copy?

- The draft EIS is available online at <http://www.statedevelopment.qld.gov.au/lower-fitzroy>
- Order a free electronic copy or purchase a printed copy by telephoning 1800 423 213 or emailing fitzroyweirs@ghd.com.au
- View a copy between 20 July 2015 and 31 August 2015 at these venues:
 - Emerald Library, 44 Borilla Street, Emerald, QLD
 - Gogango State School, 10 Wills Street Gogango, QLD
 - National Library of Australia, Parkes Place Canberra, ACT
 - Rockhampton Regional Library (Southside), 230 Bolsover Street, Rockhampton, QLD
 - State Library of Queensland, Cultural Centre, Stanley Place, South Bank, Brisbane, QLD
 - Woorabinda Aboriginal Shire Council, 112 Munns Drive, Woorabinda, QLD
 - Yeppoon Library, John Street, Yeppoon, QLD

How do I make a submission?

For information about making a 'properly made' submission, please refer to the enclosed fact sheet *Have your say on environmental impact statement* and accompanying submission form (also available online at <https://haveyoursay.dsd.qld.gov.au/>).

SUBMISSIONS CLOSE AT 5 PM ON 31 AUGUST 2015



SEND YOUR SUBMISSION USING ONE OF THE FOLLOWING METHODS

Online: <http://haveyoursay.dsd.qld.gov.au/coordinatorgeneral/lower-fitzroy>
Email: lowerfitzroy.infrastructureproject@coordinatorgeneral.qld.gov.au
Post: Project manager—Lower Fitzroy River Infrastructure project
Coordinated Project Delivery
Office of the Coordinator-General
PO Box 15517
City East Qld 4002 Australia
Fax: +61 7 3452 7486

How can I find out more?

Community information sessions will be held in August 2015 where community members can view information and maps or ask questions of the project team. Drop in at any time to find out more about the project.

Community Information Session 1

Rockhampton Regional Library (Southside) (Fitzroy Room)
230 Bolsover Street, South Rockhampton
Between **4 pm and 7 pm on Wednesday, 5 August 2015**

Community Information Session 2

Gogango Hall
Wills Street, Gogango
Between **4 pm and 7 pm on Thursday, 6 August 2015**

Community Information Session 3

Yeppoon Community Centre (Rooms A and B)
80 John Street, Yeppoon
Between **4 pm and 7 pm on Friday, 7 August 2015**

Community Information Session 4

North Rockhampton State High School
Berserker Street, North Rockhampton
Hospitality Trade Training Centre (entrance off Simpson Street)
Between **10 am and 12 pm on Saturday, 8 August 2015**



The Gladstone Area Water Board and SunWater Limited remain committed to the project and thank you for your continued interest.

Yours faithfully

The Project Team

Contact us

Phone: 1800 423 213 **Email:** fitzroyweirs@ghd.com.au **Write to:** Reply Paid 668, Brisbane QLD 4001

Visit: www.fitzroyweirs.com.au

LOWER FITZROY RIVER

INFRASTRUCTURE PROJECT

Appendix B

Project website

THIS PAGE IS LEFT INTENTIONALLY BLANK

[Home](#) [About the Project](#) [Environment](#) [Community Input](#) [Resources](#) [Contact](#)

The Gladstone Area Water Board and SunWater Limited are joint proponents undertaking technical, environmental, social, cultural and economic investigations for the Lower Fitzroy River Infrastructure Project. The project involves the raising of the existing Eden Bann Weir and construction of a new weir at Rookwood on the Fitzroy River, Central Queensland. The purpose of the project is to help meet future demand for water from urban populations, industry and potentially agriculture in Rockhampton, Gladstone and the Capricorn Coast regions.

The Coordinator-General has determined that the draft environmental impact statement (EIS) satisfactorily addresses the terms of reference for the project. The draft EIS has been released for public and agency review and comment.

You are invited to [make a submission](#) on the draft EIS including the project's potential environmental impacts and/or the effectiveness of measures proposed to manage those impacts. The Coordinator-General will consider your submission as part of the evaluation.

Last updated 20 July 2015



Our newsletters provide up to date information on the proposed project. [Find out more...](#)



[Click here](#) to view a selection of maps.



[Disclaimer](#) [Privacy](#) [Contact](#)

© 2009 Lower Fitzroy River Infrastructure Project

[Home](#) [About the Project](#) [Environment](#) [Community Input](#) [Resources](#) [Contact](#) '

Background

In December 2004 the Queensland Government, in partnership with local government, committed to developing the Central Queensland Regional Water Supply Strategy, a long term water supply strategy for the region. The strategy identified that further infrastructure on the Lower Fitzroy River is required in order to provide the appropriate reliability of supply to meet the needs of urban populations, industry and agriculture. The project was identified as appropriate infrastructure to satisfy short, medium and long term supply requirements.

The Project

The Lower Fitzroy River Infrastructure Project involves the raising of the existing Eden Bann Weir and construction of a new weir at Rookwood on the Fitzroy River, Central Queensland.

Gladstone Area Water Board and SunWater are the proponents of this project with technical assistance from multi-disciplinary consultants, GHD.

The project's key features are:

- Raising of the existing Eden Bann Weir and construction of a new weir near the Rookwood Crossing
- Potential upgrades to state, local and private roads, bridges and crossings to enable the continuation of existing access arrangements following inundation of the weirs
- Fish and turtle passage structures on the weirs.

Project Schedule

The Project is likely to be staged, with sequencing and timing dependant on a number of demand triggers including existing and new consumers, drought conditions and security of supply requirements.

A staged approach to development will enable proponents to respond to potentially smaller demands in the short-term and progressively respond to increasing and/or larger demand requirements over time through intermediate infrastructure builds until full development is reached.

Project Location

Eden Bann Weir is located approximately 62 kilometres north-west of Rockhampton. Impoundment associated with the raised Eden Bann Weir extends along the Fitzroy River.

The Rookwood Weir site is approximately 15 kilometres north of Gogango adjacent to Thirsty Creek Road. Gogango is approximately 66 kilometres south-west of Rockhampton along the Capricorn Highway. Impoundment associated with Rookwood Weir extends up the Fitzroy, Mackenzie and Dawson rivers.



[Click here to view the map](#)

Last updated 20 July 2015



Our newsletters provide up to date information on the proposed project. [Find out more...](#)



[Click here](#) to view a selection of maps.



[Disclaimer](#) [Privacy](#) [Contact](#)

© 2009 Lower Fitzroy River Infrastructure Project

[Home](#) [About the Project](#) [Environment](#) [Community Input](#) [Resources](#) [Contact](#)

Environmental impact assessment

Environmental assessment has been undertaken for the Lower Fitzroy River Infrastructure Project. The purpose of the assessment has been to explore the potential environmental, social, cultural and economic impacts likely to be associated with the Project and to identify opportunities to avoid, mitigate and/or manage these potential impacts.

The Project was determined to be a 'controlled action' by the Commonwealth Environment Minister on 7 January 2010, under the *Commonwealth Environment Protection and Biodiversity Conservation Act 1999* (EPBC Act) (EPBC Referral 2009/5173).

Controlling provisions under the EPBC Act are:

- World Heritage properties (sections 12 and 15(a))
- National Heritage places (sections 15B and 15(c))
- Listed threatened species and communities (sections 18 and 18(a))
- Listed migratory species (sections 20 and 20(a))

In June 2010, the Commonwealth Department of the Environment issued [Guidelines for an environmental impact statement \(EIS\)](#) in relation to matters of national environmental significance under the EPBC Act.

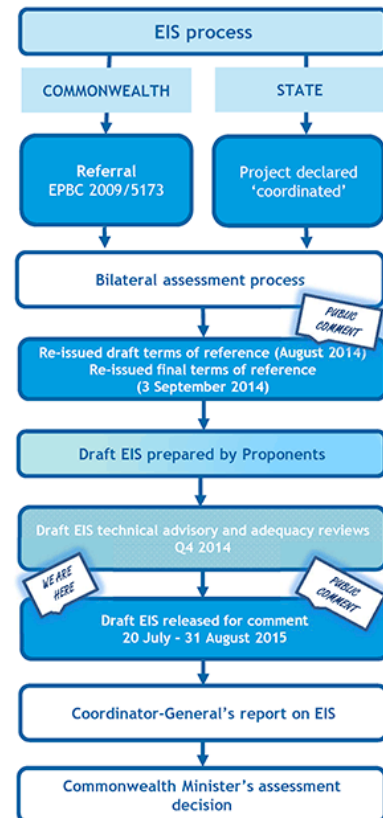
In May 2011, the Coordinator-General declared the project a 'coordinated project' for which an EIS is required pursuant to section 26(1)(a) of the *State Development and Public Works Organisation Act 1971*. Terms of reference for the EIS were finalised by the Coordinator-General in April 2012.

As at January 2014, the Project transitioned to assessment through the bilateral assessment process executed between State and Commonwealth governments. To facilitate this process, draft ToR addressing both State and Commonwealth requirements were re-issued and finalised in September 2014.

As a result, the single draft EIS addresses State and Commonwealth matters for consideration under the bilateral agreement.

[Return to top of page](#)

Last updated 20 July 2015



Our newsletters provide up to date information on the proposed project. [Find out more...](#)



[Disclaimer](#) [Privacy](#) [Contact](#)

© 2009 Lower Fitzroy River Infrastructure Project

[Home](#) [About the Project](#) [Environment](#) [Community Input](#) [Resources](#) [Contact](#)

Release of the draft environmental impact statement

The Coordinator-General has determined that the draft environmental impact statement (EIS) satisfactorily addresses the terms of reference for the project. The draft EIS has been released for public and agency review and comment.

You are invited to make a submission on the draft EIS including the project's potential environmental impacts and/or the effectiveness of measures proposed to manage those impacts. The Coordinator-General will consider your submission as part of the evaluation.

The draft EIS is available from <http://haveyoursay.dsd.qld.gov.au>.

Order a free electronic copy or purchase a printed copy by telephoning 1800 423 213 or emailing fitzroyweirs@ghd.com.au.

The draft EIS will be available to view between 20 July 2015 and 5 pm on 31 August 2015 at:

- Emerald Library, 44 Borilla Street, Emerald, QLD
- Gogango State School, 10 Wills Street, Gogango, QLD
- National Library of Australia, Parkes Place, Canberra, ACT
- Rockhampton Regional Library (Southside), 230 Bolsover Street, Rockhampton, QLD
- State Library of Queensland, Cultural Centre, Stanley Place, South Bank, Brisbane, QLD
- Woorabinda Aboriginal Shire Council, 112 Munns Drive, Woorabinda, QLD
- Yeppoon Library, John Street, Yeppoon, QLD

Community information sessions

Community information sessions will be held in August 2015 where community members can view information and maps or ask questions of the project team. Drop in at any time to find out more about the project.

Community Information Session 1

Rockhampton Regional Library (Southside) (Fitzroy Room)
230 Bolsover Street, South Rockhampton
Between **4 pm and 7 pm on Wednesday, 5 August 2015**

Community Information Session 2

Gogango Hall
Wills Street, Gogango
Between **4 pm and 7 pm on Thursday, 6 August 2015**

Community Information Session 3

Yeppoon Community Centre (Rooms A and B)
80 John Street, Yeppoon
Between **4 pm and 7 pm on Friday, 7 August 2015**

Community Information Session 4

North Rockhampton State High School
Berserker Street, North Rockhampton
Hospitality Trade Training Centre (entrance off Simpson Street)
Between **10 am and 12 pm on Saturday, 8 August 2015**

How to make a submission

For information about making a 'properly made' submission, refer to the Queensland Government's fact sheet [Have your say on an environmental impact statement](#) and accompanying submission form, available online and at the public display locations.

Send your submission using one of the following methods:

Online: <http://haveyoursay.dsd.qld.gov.au/coordinatorgeneral/lower-fitzroy>

Email: lowerfitzroy.infrastructureproject@coordinatorgeneral.qld.gov.au

Post: Project manager - Lower Fitzroy River Infrastructure project
Coordinated Project Delivery
Office of the Coordinator-General
PO Box 15517
City East Qld 4002 Australia

Fax: +61 7 3452 7486

Submissions close at 5 pm on 31 August 2015

Last updated 20 July 2015



Our newsletters provide up to date information on the proposed project. [Find out more...](#)



[Disclaimer](#) [Privacy](#) [Contact](#)

© 2009 Lower Fitzroy River Infrastructure Project

[Home](#) [About the Project](#) [Environment](#) [Community Input](#) [Resources](#) [Contact](#)

This page provides information on the Lower Fitzroy River Infrastructure Project including the newsletters, project updates and media releases. It also contains links to Environmental Impact Assessment documents, relevant government publications and State and Commonwealth legislation.

Newsletters

Project Newsletter Spring 2009 (759KB)

Project Update 1 - Summer 2009 (291KB)

Project Update 2 - Autumn 2010 (100KB)

Project Update 3 - Summer 2010 (195KB)

Project Update 4 - Summer 2011 (100KB)

Project Update 5 – Autumn 2013 (109KB)

Publications

Central Queensland Regional Water Supply Strategy

State of Queensland (Department of Natural Resources and Water), 2006

Legislation

Commonwealth

Environment Protection and Biodiversity Conservation Act 1999

Updated version of Environment Protection and Biodiversity Conservation Act 1999 (prepared on 10 May 2011)

State

State Development and Public Works Organisation Act 1971

Updated version of State Development and Public Works Organisation Act 1971 (reprinted as in force February 2011).

Aboriginal Cultural Heritage Act 2003

Updated version of Aboriginal Cultural Heritage Act 2003

Water Act 2000

Updated version of the Water Act 2000

Water Resource (Fitzroy Basin) Plan 2011

Updated version of Water Resource (Fitzroy Basin) Plan 2011

State Planning Policy 2/02 Planning and managing Development involving Acid Sulfate Soils

Updated link to State Planning Policy 2/02

Sustainable Planning Act 2009

Sustainable Planning Act 2009 | Sustainable Planning Regulation 2009 | Sustainable Planning Act Explanatory Notes

Environmental Protection Act 1994



[Return to top of page](#)

Last updated 03 May 2013

[Disclaimer](#) [Privacy](#) [Contact](#)

© 2009 Lower Fitzroy River Infrastructure Project

[Home](#) [About the Project](#) [Environment](#) [Community Input](#) [Resources](#) [Contact](#)

For further information about the Lower Fitzroy River Infrastructure Project or to join the project mailing list for updates, contact the Project Team by:

Phone: 1800 423 213* (8.30am to 5.00pm, Monday to Friday)
Email: fitzroyweirs@ghd.com.au
Write to: Attention: Lower Fitzroy River Infrastructure Project, Reply Paid 668, Brisbane QLD 4001

*Free call from fixed lines in Australia, charges apply for mobile phones.

•

Last updated 03 May 2013



[Disclaimer](#) [Privacy](#) [Contact](#)

© 2009 Lower Fitzroy River Infrastructure Project

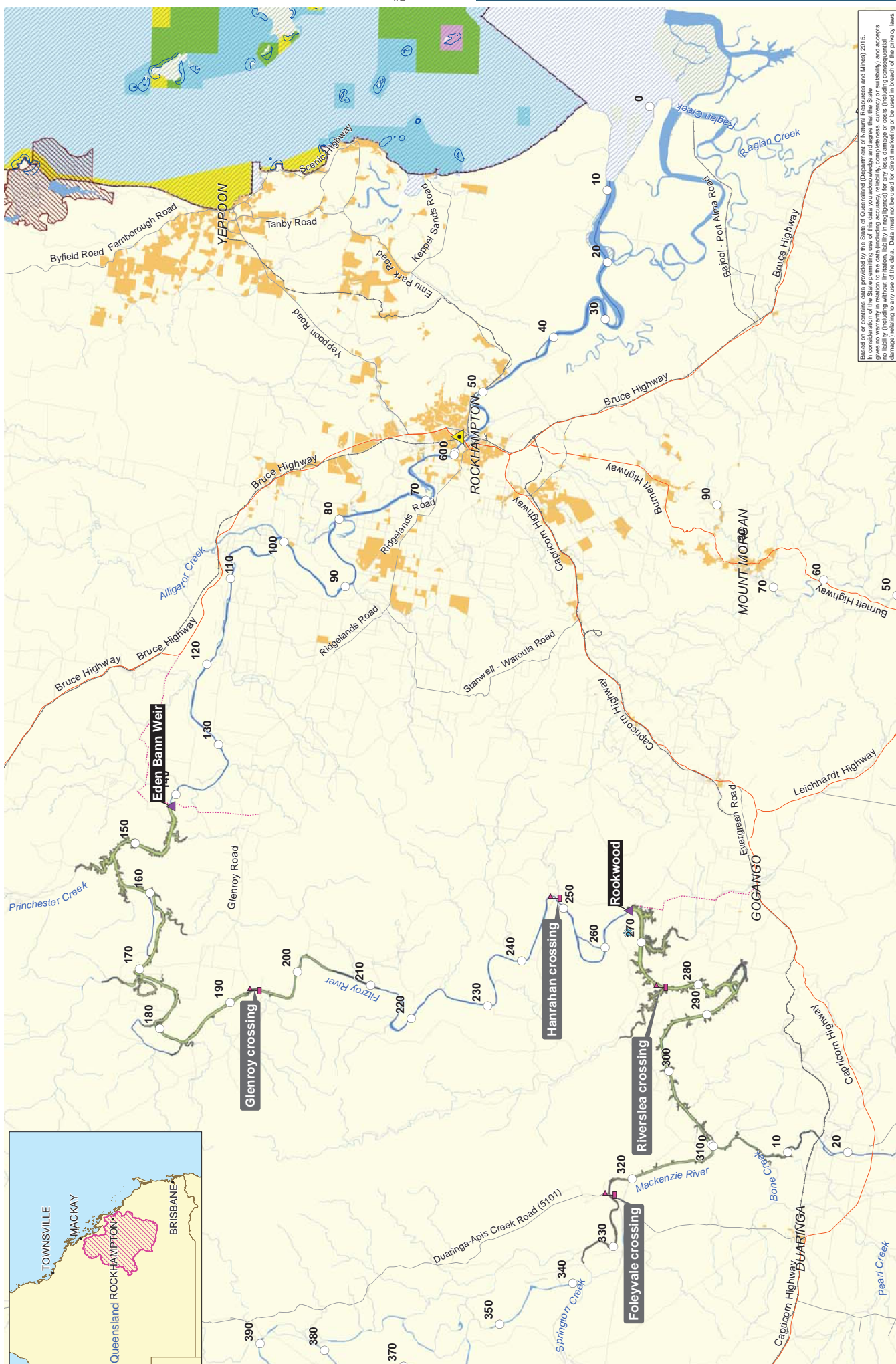
LOWER FITZROY RIVER

INFRASTRUCTURE PROJECT

Appendix B

Posters

THIS PAGE IS LEFT INTENTIONALLY BLANK



LOWER FITZROY RIVER

INFRASTRUCTURE PROJECT

PROJECT DESCRIPTION

Eden Bann Weir

- Located approximately 62 km north west of Rockhampton on the Fitzroy River
- Existing Eden Bann Weir (Stage 1) full supply level (FSL) 14.5 m AHD
- Eden Bann Weir (Stage 2) raise to FSL 18.2 m AHD
- Eden Bann Weir (Stage 3) addition of 2 m high flap gates to achieve FSL 20.2 m AHD
- Impoundment extends along the Fitzroy River



Rookwood Weir

- Located approximately 66 km south west of Rockhampton on the Fitzroy River
- Rookwood Weir (Stage 1) new weir to FSL 45.5 m AHD
- Rookwood Weir (Stage 2) addition of 3.5 m high flap gates to achieve FSL 49.0 m AHD
- Impoundment extends along the Fitzroy, Mackenzie and Dawson rivers



Project timing

The Project is expected to be staged, with sequencing and timing dependant on a number of demand triggers including:

- Existing and new consumers
- Drought conditions
- Security of supply requirements

The Project will be implemented by way of a flexible strategy to allow the rapid delivery of water to meet anticipated future demands, when triggered. A staged approach to development enables proponents to respond to potentially smaller demands in the short-term and progressively respond to increasing and/or larger demand requirements over time through intermediate infrastructure builds until full development is reached.

Barrage

- In-river structure
- Similar to a weir
- Located within the tidal zone of a river
- Results in separation of fresh and marine water



Weir

- In-river structure
- Highest level of the weir is equal to or less than the high bank of the river
- Designed to be overtopped (drowned out) by flows that exceed river capacity
- No flood mitigation



Dam

- In-valley structure
- Utilises both the river and surrounding valley
- Highest level of the dam will intersect adjacent hills
- Generally impounds greater area of land
- Spillway designed to pass flood flows
- May be designed to mitigate floods



LOWER FITZROY RIVER

INFRASTRUCTURE PROJECT

OTHER PROJECT INFRASTRUCTURE

Access

- Eden Bann Weir
 - Existing left (northern) bank Livingstone Shire Council local road access retained from the State-controlled Bruce Highway
 - A new private permanent right (southern) bank access road off Rockhampton Regional Council's local Ridgeland Road
- Rookwood Weir
 - Upgrades to Rockhampton Regional Council's Thirsty Creek Road from the State-controlled Capricorn Highway at Gogango
 - Capricorn Highway/Third Street intersection upgrade at Gogango

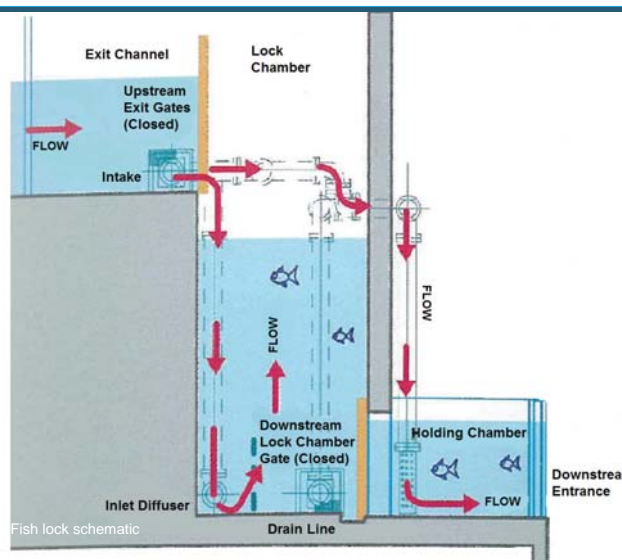


Gauging stations

- Eden Bann Weir: SunWater's existing gauging station downstream at Wattlebank is retained
- Eden Bann Weir: recalibration of SunWater's existing gauge at The Gap immediately upstream
- Rookwood Weir: new gauging station installed on a rock bar directly downstream
- Rookwood Weir: recalibration of the Department of Natural Resources and Mines existing gauging station at Riverslea

Fish locks

- Eden Bann Weir fish passage infrastructure
 - An upgraded fish lock on the left (northern) bank
 - A new fish lock located on the right (southern) bank
 - Caters for high and low reservoir levels; flows from zero to 2700 m³/s.
- Rookwood Weir fish passage infrastructure
 - A right (eastern) bank fish lock
 - Caters for high and low reservoir levels; flows from zero to 500 m³/s



Turtle passage

- A turtle ramp is proposed for the right (northern) bank at Eden Bann Weir and the right (western) bank at Rookwood Weir
- Turtle ramp comprises a purpose built and appropriately graded concrete lined channel with resting pools and attraction flows

River crossings

River crossing upgrades aim to maintain the connectivity and function of the existing road network and provide improved flood immunity. As part of the project Council and State-controlled river crossings will be upgraded from low level causeways to bridges, improving the hydraulic immunity.

- Eden Bann Weir Stage 2 and/or Stage 3: Glenroy Crossing; single lane bridge
- Rookwood Weir Stage 1 and/or Stage 2: Riverslea Crossing; single lane bridge
- Rookwood Weir Stage 2: Foleyvale Crossing; double lane bridge

Hanrahan Crossing is proposed to be upgraded to accommodate operational releases downstream of Rookwood Weir (flows up to 50 m³/s).



Foleyvale crossing



Hanrahan crossing



Glenroy crossing



Riverslea crossing

LOWER FITZROY RIVER INFRASTRUCTURE PROJECT

PROJECT JUSTIFICATION AND NEED

Background

In December 2004 the Queensland Government, in partnership with local government, committed to developing the Central Queensland Regional Water Supply Strategy, a long term water supply strategy for the region.

The strategy identified that further infrastructure on the Lower Fitzroy River is required in order to provide the appropriate reliability of supply to meet the needs of urban populations, industry and agriculture.

The Project was identified as appropriate infrastructure to satisfy short, medium and long term supply requirements.

Regulatory framework and environmental assessment process

- The Project is a 'controlled action' requiring assessment and approval under the *Environment Protection and Biodiversity Conservation Act 1999*
- The Coordinator-General declared the Project to be a 'coordinated project' for which an environmental impact statement (EIS) is required under the *State Development and Public Works Organisation Act 1971*
- A single EIS addresses both State and Commonwealth requirements

Project demands

Future demand for water resources is predicted due to the continued growth of industrial and urban expansion in the Lower Fitzroy and Gladstone areas and potentially some agricultural development within the Fitzroy Agricultural Corridor. In addition to direct increases in demand there is also a potential requirement to improve the level of reliability of the existing water supplies locally and regionally.

Key potential water demand triggers:

- Gladstone Area Water Board (GAWB): water supply to Gladstone via GAWB's proposed Gladstone-Fitzroy Pipeline (30,000 ML/a)
- Rockhampton and Livingstone Shire Councils: to support improved reliability initiatives and increased urban water supplies
- Industry and mining: to support economic growth in Rockhampton's Gracemere-Stanwell Industrial Corridor and industrial demand in the Gladstone region
- Agriculture: Regional Development Australia's Growing Central Queensland initiative; the lower Fitzroy Agricultural Corridor; and linkages to development in Northern Australia and improved agricultural competitiveness regionally

Water resource planning

Water Resource (Fitzroy Basin) Plan 2011

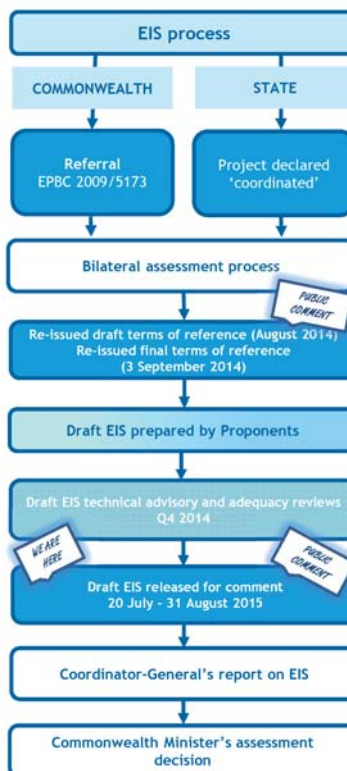
The Water Resource (Fitzroy Basin) Plan 2011 (Fitzroy WRP) reserves a nominal volume of water (76,000 ML) for strategic water infrastructure on the Fitzroy River as the strategic water infrastructure reserve.

The Project is recognised as strategic water infrastructure to which water allocations may be granted.

Fitzroy Basin Resource Operations Plan

The Fitzroy Basin Resource Operations Plan specifies that submissions to make unallocated water available from the strategic water infrastructure reserve on the Fitzroy River may be made by:

- The Gladstone Area Water Board for up to 30,000 ML of the reserve for urban and industrial water supplies
- A local government authority for up to 4,000 ML of the reserve for urban water supplies for the Capricorn Coast
- A person or entity for up to the remaining 42,000 ML, with no intended use specified



Environmental assessment has been undertaken to include:

- Scenic amenity and lighting
- Topography, geology and soils
- Contaminated land
- Land use and tenure
- Flora
- Aquatic ecology
- Terrestrial fauna
- Surface water resources
- Groundwater resources
- Water quality
- Air quality
- Greenhouse gas
- Noise and vibration
- Waste
- Transport
- Cultural heritage
- Socio-economic
- Hazard and risk
- Cumulative and consequential impacts
- Matters of national environmental significance

A framework environmental management plan has been prepared to address avoidance, mitigation and management of impacts.

As appropriate offsets are proposed.



LOWER FITZROY RIVER INFRASTRUCTURE PROJECT

PROJECT ALTERNATIVES

Project alternatives have been considered based on their ability to respond to rapid and emerging demands overtime.



Fitzroy Barrage

In terms of infrastructure options, raising the Fitzroy Barrage does not satisfy requirements to meet immediate and emerging demands while ensuring capture of available yield from the system. Larger storage options are required.

Connors River Dam

- Connors River Dam is located on the Connors River
- Connors River Dam received EIS approval with SunWater as the proponent
- Not considered viable option due to the anticipated transfer losses that would occur from the dam to the Lower Fitzroy system

Non-infrastructure alternatives

- Demand management strategies (pricing, education, rostering, recycling and water use efficiency)
- Research and development programs to reduce consumption
- Water trading (take up of currently unutilised or underutilised existing allocations)

Nathan Dam

- Nathan Dam on the Dawson River is being proposed by SunWater
- Given the distance from Nathan Dam to the Project, together with anticipated demand from Nathan Dam within the Dawson-Callide and Upper Dawson sub-regions, it is unlikely that supply from Nathan Dam will achieve Project objectives and provide an economically viable solution to long term water supply requirements in the lower Fitzroy

Fitzroy Gap Dam

- Supply from a dam at The Gap would not achieve Project objectives in the short to medium term
- Construction of the dam does not allow for incremental development in response to increasing demand
- A dam at The Gap would also impact the existing Eden Bann Weir

Relationships to other projects

Existing infrastructure

The Project will operate in conjunction with the existing Fitzroy Barrage with releases from Rookwood Weir to Eden Bann Weir (existing and raised) to the Fitzroy Barrage for abstraction.

Proposed infrastructure

Awoonga Dam, while regarded as a secure water source, remains the Gladstone Area Water Board's (GAWB) sole water source. GAWB plans to augment its existing system by constructing a second water source.

GAWB has identified the development of the Gladstone-Fitzroy Pipeline (GFP) Project as its preferred delivery mechanism for a second water source. The GFP Project is designed to transfer 30,000 ML of water per annum (and possibly more if required) from the Fitzroy system. Water supply is proposed to be from water secured through the raising of Eden Bann Weir and construction of the new Rookwood Weir.

LOWER FITZROY RIVER

INFRASTRUCTURE PROJECT

ECOLOGY

Flora

Listed threatened species

- Brigalow (*Acacia harpophylla* dominant and co-dominant) threatened ecological community (TEC)
- Black ironbox

Mitigation and management

Offsets are proposed for the unavoidable loss of Brigalow TEC and black ironbox within the Project footprint.



Terrestrial fauna

Listed threatened species

Common name	EPBC Act status	NC Act status
Squatter pigeon (southern)	Vulnerable	Vulnerable
Black-necked stork	-	Near threatened
Black-chinned honeyeater	-	Near threatened
Cotton pygmy-goose	Near threatened	Near threatened
Little pied bat	-	Near threatened
Echidna	-	Special least concern
Koala	Vulnerable*	Special least concern

* The koala is currently listed as vulnerable under the EPBC Act. At the time of assessment and referral decision (EPBC 2009/56) being made the koala was however not listed as a threatened species.

Potential Project impacts

- Injury and mortality
- Disruption to behaviour of localised wildlife assemblages
- Loss of terrestrial habitat
- Fragmentation of riparian habitat
- Loss of movement corridors and connectivity
- Increased predation and competition
- Degradation of habitats.

Mitigation and management

- Project environmental management plan:
 - Pre-clearing surveys
 - Project species management program
 - Weed and pest control measures
 - Revegetation activities
- Significant adverse impacts on conservation significant species are not anticipated

Aquatic ecology

Listed threatened species

- No listed fish species of conservation significance
- Fitzroy River turtle (vulnerable) confirmed present
- Estuarine crocodile (vulnerable) confirmed present

Potential Project impacts

- Alteration of aquatic habitats
- Inundation of turtle nesting habitat
- Habitat degradation
- Changes to downstream flow regime
- Fauna injury and mortality
- Restriction of movement
- Increased pest and weed species

Mitigation, management and offsets

- Fish locks
- Fish Monitoring Program
- Turtle passage (ramps) and monitoring program
- Fitzroy River turtle species management program
- Fitzroy River turtle offsets:
 - Protection and management of turtle nests
 - Financial settlement offset for loss of aquatic habitat



LOWER FITZROY RIVER

INFRASTRUCTURE PROJECT

MATTERS OF NATIONAL ENVIRONMENTAL SIGNIFICANCE

The Lower Fitzroy River Infrastructure Project is a 'controlled action' requiring assessment and approval under the Commonwealth *Environment Protection and Biodiversity Conservation Act 1999* (EPBC Act) for impacts on matters of national environmental significance (MNES).

World Heritage properties and National Heritage places

- The Great Barrier Reef World Heritage Area is located approximately 141 km downstream
- No direct adverse impacts
- Outflows to the GBRWHA are maintained; no significant changes to downstream flows below the Fitzroy Barrage



Black ironbox on Melaleuca Creek



Brigalow woodland in the vicinity of Rookwood

Threatened ecological communities

Brigalow (*Acacia harpophylla* dominant and co-dominant) threatened ecological community

- Endangered under the EPBC Act
- Up to 20 ha occurs within the Project footprint
- Offsets are proposed

Migratory species

No significant impacts to migratory and marine species are expected.

Threatened species

Black ironbox (*Eucalyptus raveretiana*)

- Vulnerable under the EPBC Act
- Up to 100 trees occur within the Rookwood Weir inundation area
- Offsets are proposed

Fitzroy River turtle (*Rheodytes leukops*)

- Vulnerable under the EPBC Act
- Species management program has been developed
- A direct offset is proposed for the protection and management of turtle nests
- A financial contribution offset is proposed for adverse impacts on aquatic habitat



Fitzroy River turtle

Consequential impact assessment

Land-based run-off from broad scale clearing for industrial development, residential development to support urban growth and for agriculture can include sediment, pesticides and herbicides and other debris and contaminants.

The draft EIS has considered potential impacts from facilitated development on:

- The Great Barrier Reef
- Listed threatened, migratory and marine species and TECs

Industrial and residential/urban development and some agricultural development will occur under State and local government planning scheme provisions and could proceed through alternate means of water supply.

Landholders are increasingly adopting 'best practice' land management actions in relation to agricultural development. This is further supported through initiatives and commitments made in the Commonwealth Government's Reef 2050 Long-Term Sustainability Plan and the State Government's Reef Water Quality Protection Plan.

LOWER FITZROY RIVER

INFRASTRUCTURE PROJECT

FITZROY RIVER TURTLE

The Fitzroy River turtle (*Rheodytes leukops*) is listed as vulnerable under the *Commonwealth Environment Protection and Biodiversity Conservation Act 1999* and the *Queensland Nature Conservation Act 1992*. The Fitzroy River turtle is one of a unique group of Australian freshwater turtles that can extract oxygen from both the air and the water.

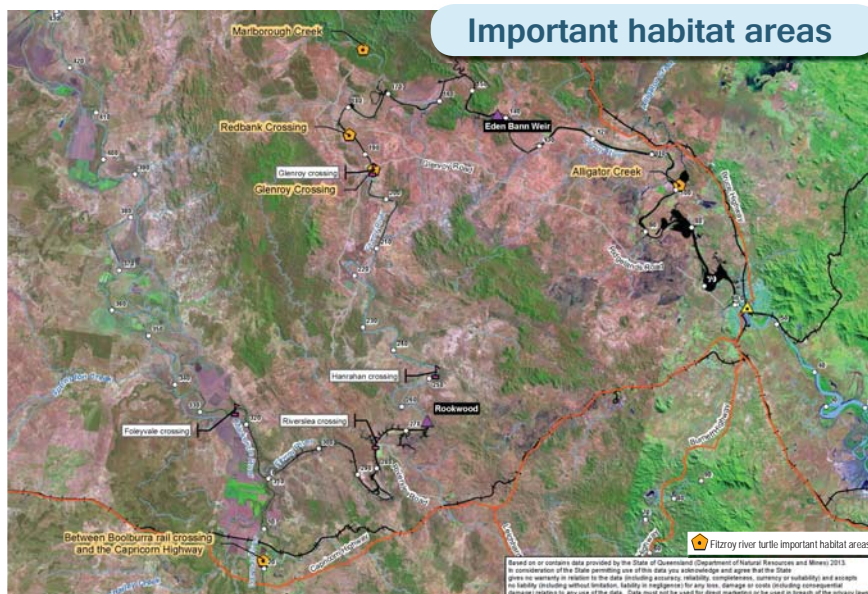
Habitat and distribution

- Endemic to the Fitzroy Basin catchment
- Fitzroy Barrage and Alligator Creek
- Upper reaches of the Dawson, Nogoa and Connors Rivers
- The Project footprint is considered to support an important population
- Nesting occurs on alluvial sand/loam banks



Fitzroy River riffle habitat

Important habitat areas



Potential Project impacts

- Loss of alteration of foraging and sheltering resources
- Loss of nesting habitat
- Injury and mortality
- Degradation of habitat
- Restriction of movement
- Reduction in heterogeneity of aquatic habitats

Species management program

- Turtle protection design features
- Turtle passage (turtleway)
- Weed management and feral animal control
- Water quality management
- Relocation and salvage
- Turtle movement study
- Turtle monitoring program
- Adaptive management

Existing threatening processes

- Lack of recruitment into the population
 - Predation by feral animals, goannas and water rats
 - Trampling of nests by cattle
- Loss of habitat
- Alteration of natural flow regime
- Barriers to movement
- Physical injury and mortality
- Poor water quality

Project offsets

- Protection and management of turtle nests to:
 - Reduce nest predation
 - Increase population recruitment
 - Promote the recovery of the species
- Financial settlement offset for loss of aquatic habitat



Potential Fitzroy River turtle nesting habitat in Rookwood Weir Project footprint



Source: Fitzroy Basin Association 2013

LOWER FITZROY RIVER

INFRASTRUCTURE PROJECT

WATER RESOURCES

The Fitzroy Basin is the largest catchment on the eastern seaboard of Australia, extending over an area of approximately 142,000 km² of central and eastern Queensland around the Tropic of Capricorn. It consists of six major subcatchments: Isaac Connors; Nogoia; Comet; Mackenzie; Dawson; and Fitzroy.

Surface water

Regulatory framework

Water resource use and allocation is facilitated through the Water Resource (Fitzroy Basin) Plan 2011 and the Fitzroy Basin Resource Operations Plan.

Supplemented water in the Fitzroy sub-catchment is supplied from:

- Lower Fitzroy Water Supply Scheme: Eden Bann Weir (owned and operated by SunWater)
- Fitzroy Barrage Water Supply Scheme: Fitzroy Barrage (owned and operated by Rockhampton Regional Council)

Unsupplemented water is managed by the State within the Fitzroy Water Management Area.

Yield

- Integrated Quantity Quality Model (IQQM) was used to estimate project yields
- Existing (Fitzroy Barrage and Eden Bann Weir) and proposed (Nathan Dam and Connors River Dam) infrastructure included in IQQM
- Staged development to achieve a yield consistent with the WRP's strategic water infrastructure reserve (nominal volume of 76,000 ML)

Water allocation security assessment

- WRP objectives for reliability of high priority and medium priority supplemented water supplies is achieved
- WRP objectives for reliability of unsupplemented water supply is achieved for all but one group
- Further modelling required to inform ROP amendments
- Existing supply reliability will be maintained for current water allocation holders
- Water harvesting and low flow/no flow entitlements require amendment with regard to the way in which water is accessed
- One-on-one negotiations proposed

Environmental flow assessment

- Seasonal base flow objectives are achieved or are similar to those achieved for the existing system
- Medium to high flow objectives are achieved for all but one project scenario
- First post-winter flow objectives are achieved

Flow regimes

- During operations the storages capture and retain river flows during the wet season allowing for slow, regulated releases through the dry season
- Environmental releases made in accordance with regulations
- Weirs 'fill and spill' quickly; within one to two months
- Analysis of flows pre- and post-development indicate marginal changes to flows upstream and downstream
- Statistical analysis undertaken for end of-system flows to the Great Barrier Reef indicate no significant differences

Fitzroy WRP plan area



Supplemented water supply schemes relative to the Project



Flooding

Flood characteristics

The Fitzroy River has a long and well-documented history of flooding. Major floods result from either the Dawson or the Mackenzie rivers although significant flooding in the Rockhampton area can also occur from upstream flows and/or heavy rain in the local area below Riverslea Crossing.

- The Fitzroy River historic total annual flow is between almost zero to 22,500,000 ML
- Historic total annual flow in the Dawson River ranges from zero to 5,000,000 ML
- 1 in 2 Annual Exceedance Probability (AEP) events are largely contained within the main river channel
- Anabranch flows develop during 1 in 5 AEP events
- Extensive flooding across the river floodplain occurs and anabranches run full during 1 in 20 AEP events
- Floodplains become flooded during a 1 in 50 AEP event
- Coorumburra Road (between 10 Mile Creek and Green Creek): time of closure increased by 1.5 days (1 in 5 AEP)
- Commanche Road (south of Glenroy Crossing): time of closure increased by 0.5 days (1 in 5 AEP)
- Smith Road: time of closure increased by 2 days (1 in 5 AEP)
- Thirsty Creek Road: upgrades to maintain existing flood immunity

Eden Bann Weir

Location	AMTD	Design event afflux (m) per AEP event					
		1 in 2	1 in 5	1 in 10	1 in 20	1 in 50	1 in 100
Riverslea gauge	276 km	0	0	0	0	0	0
Rookwood Weir site	265.3 km	0	0	0	0	0	0
Weir site gauge	154.7 km	2.6	0.3	0.2	0.2	0.2	0.1
The Gap gauge	142.1 km	3.6	0.5	0.3	0.3	0.3	0.2
Eden Bann Weir	141.2 km	3.6	0.5	0.3	0.3	0.3	0.2

Rookwood Weir

Location	AMTD	Design event afflux (m) per AEP event					
		1 in 2	1 in 5	1 in 10	1 in 20	1 in 50	1 in 100
Foleyvale Crossing (Mackenzie River)	323.5 km	0.22	N/A	N/A	N/A	N/A	N/A
Capricorn Highway crossing (Dawson River)	23.2 km	0.59	N/A	N/A	N/A	N/A	N/A
Upstream confluence	310 km	0.6	0.2	0.1	0	0	0
Riverslea gauge	276 km	3.7	0.8	0.4	0.2	0.1	0
Rookwood Weir site	265.3 km	5	1.2	0.6	0.4	0.2	0.2

Roads and river crossings

Crossing	MATOC (days)		Duration of flooding (days above crossing level per event)									
	Current	New*	2 year ARI	5 year ARI	10 year ARI	20 year ARI	50 year ARI	100 year ARI	Current	New*	Current	New*
Glenroy	12	5	24	2	24	13	25	16	25	16	25	16
Riverslea	12	2	24	6	24	2	24	16	25	13	25	14
Foleyvale	16	2	26	6	36	5	37	1	39	11	41	14

*New bridge infrastructure in place with a raised Eden Bann Weir and a new Rookwood Weir in operation
*ARI = Average Recurrence Interval



Groundwater

Groundwater management areas

- Fitzroy groundwater management area
- Highlands groundwater management area

Groundwater infrastructure

- A single groundwater bore is registered within the Rookwood Weir inundation area
- A negotiated agreement on measures to restore the loss of supply or provision of alternative compensatory measures is proposed

Groundwater dependent ecosystems

- Rivers, springs and wetlands reliant on the expression of groundwater
- GDEs dependent on subsurface presence of groundwater include riparian vegetation (dominated by Eucalyptus camaldulensis, E. tereticornis and E. coolabah, consistent with RE 11.3.25, RE 11.3.4 and RE 11.3.3

- Localised waterlogging of riparian areas and vegetation dieback

Groundwater levels and recharge

- Levels may rise locally at times but still remain below river bank elevations in upstream areas
- No significant reduction in groundwater levels or in the existing recharge to groundwater downstream

Water quality

The Fitzroy Basin has been largely modified for human land use practices. Influences on water quality within the project area includes:

- Erosion and sediment-laden runoff and erosion from cleared agricultural land
- Increased salinity, pH and metal concentrations from point source inputs associated with mine-water releases in upper sub-catchments
- Changes to flows from weirs and water extractions
- Natural seasonal climatic variability; floods and drought
- Natural (saline and alkaline) geology of soils

External influences on water quality will persist with a raised Eden Bann Weir and new Rookwood Weir in place

A construction environmental management plan will manage short-term, localised impacts; erosion, run-off and sedimentation and pollutants

An operational management plan will manage longer term water quality impacts, including:

- Water quality monitoring program (dissolved oxygen, turbidity, nutrients, salinity and blue green algae)
- Use of differential (multi-level) offtakes for mixing of water across the water column
- Operational draw down to reduce time at depth and stratification
- Low level outlets to facilitate flushing of sediment

LOWER FITZROY RIVER

INFRASTRUCTURE PROJECT

SOCIAL IMPACT ASSESSMENT AND ECONOMICS

Water security

The most significant benefit of the Project is an increase in water supply for the region.

Raising Eden Bann Weir and constructing Rookwood Weir will increase the availability and potentially the reliability of supplemented water supplies.

The Project will provide water to industrial and agricultural customers in the region and will support growing urban communities; benefiting the local, regional, state and national economies.

Workforce profile, employment and business opportunities

- Total workforce of 150 persons
- Two year construction period
- No onsite workers accommodation proposed; preference to source workforce from local and regional areas
- Predicted demand for support services from local businesses

Landholder impacts and mitigation measures

- Loss of land (construction areas, inundation within river bed and banks)
- Relocation of agricultural infrastructure (pumps, fencing)
- Severance of and/or loss of access to land
- Cattle bogging
- Changes to water entitlements
- Water storage easement and flood buffer
- Relative to a demand trigger and confirmation of a defined infrastructure build, landholders impacted will be further consulted and agreements (access, acquisition, compensation, etc.) negotiated and agreed on a one-on-one basis
- To date land impacts have considered land value; improvements; management requirements; severance and productivity

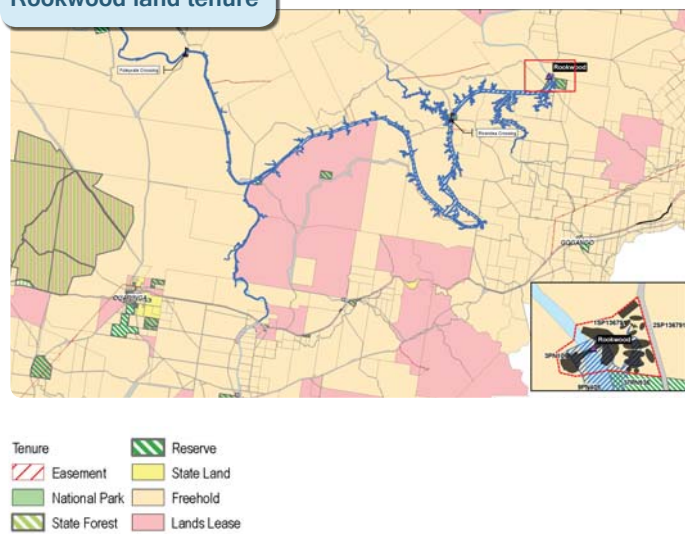
Management plans and strategies

- A suite of management plans and strategies will avoid, mitigate and manage Project impacts and facilitate Project benefits during the construction phase in relation to air quality, noise and vibration, traffic impacts, employment and procurement opportunities
- Stakeholder Engagement Plan
- Near Neighbour Policy and Grievance Management Process
- Land Acquisition Strategy
- Land Access Protocol
- Weed Management Plan
- Recruitment and procurement plans
- Traffic and Road Use Management Plans

Eden Bann Weir land tenure

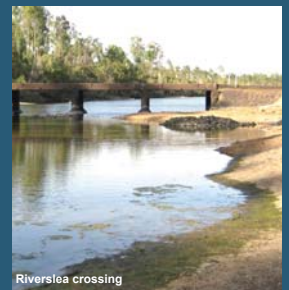


Rookwood land tenure



River crossings

- Workforce of 50 persons per crossing
- Twelve month construction period
- Upgraded access at Glenroy, Riverslea and Foleyvale
- Significantly improved flood immunity facilitating the movement of people, machinery, equipment and stock and maintaining access to services and facilities

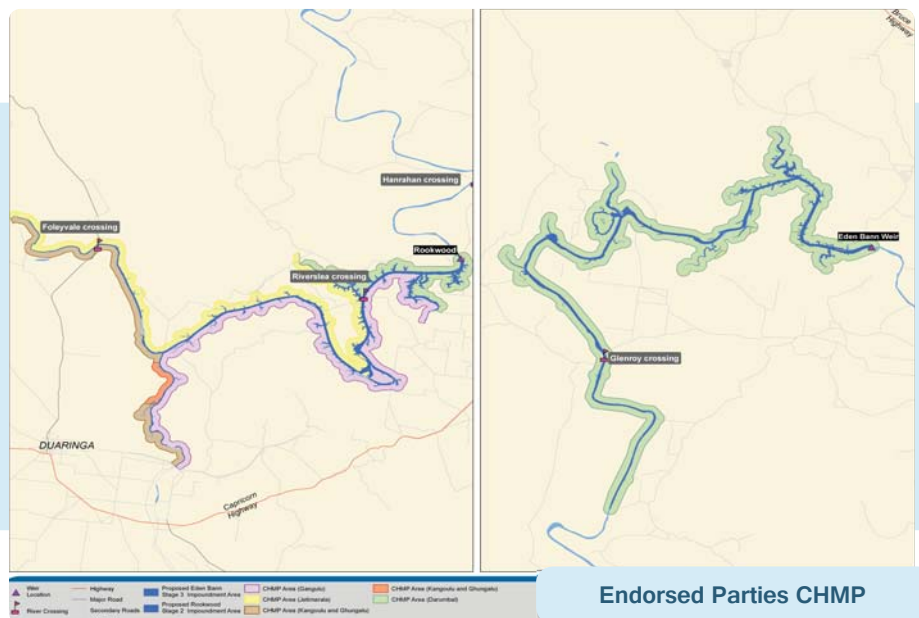


CULTURAL HERITAGE

Cultural Heritage Management Plans (CHMPs) have been prepared together with endorsed Aboriginal parties and approved by the State Government in accordance with the *Aboriginal Cultural Heritage Act 2003*

- Daumbal People
- Gangulu People
- Ghungalu People
- Kangoolu People
- Jetimarala People

No items of non-Indigenous cultural heritage are predicted to be impacted.



Endorsed Parties CHMP

LOWER FITZROY RIVER

INFRASTRUCTURE PROJECT

PROJECT COMMITMENTS

The Gladstone Area Water Board (GAWB) and SunWater Limited (SunWater), as proponents, are committed to managing and operating their infrastructure in a safe and sustainable manner.

Sustainability considerations have been incorporated throughout planning and design phases. GAWB and SunWater are committed to incorporating ecologically sustainable design considerations in construction, operation and decommissioning of the Project. In addition to the development of an environmental management plan for the Lower Fitzroy River Infrastructure Project, GAWB and SunWater are committed to implementing of a range of measures to further avoid, mitigate, manage and offset impacts.

Gladstone Area Water Board

GAWB is a Category 1 commercialised Water Authority under the *Water Act 2000* and a registered service provider under the *Water Supply (Safety and Reliability) Act 2008*.

GAWB owns and operates Awoonga Dam on the Boyne River along with a network of delivery pipelines, water treatment plants and other bulk water distribution infrastructure in the Gladstone Region.

SunWater Limited

SunWater is a statutory Government Owned Corporation under the *Government Owned Corporations Act 1993*.

SunWater owns and operates the Queensland Government's bulk water supply and distribution infrastructure located throughout regional Queensland, including the existing Eden Bann Weir.

Aquatic fauna

- New and upgraded fish locks
- Development of a Fish Monitoring Program
- Construction of turtle passages (turtle ramps)
- Finalisation of the Fitzroy River turtle species management program, inclusive of a movement study and monitoring program

Roads and river crossings

- New bridges at Glenroy Crossing, Riverslea Crossing and Foleyvale Crossing (relative to infrastructure build and impoundment impacts)
- New culverts at Hanrahan Crossing
- Pavement impact assessments, road safety audits and dilapidation surveys of local Council and State-controlled roads and intersections
- Upgrades to Thirsty Creek Road, Bruce Highway/Atkinson Road intersection and Capricorn Highway/Third Street intersection
- Development of road use management plans and site specific traffic management plans

Offsets

- Black ironbox
- Brigalow (*Acacia harpophylla* dominant and co-dominant) threatened ecological community
- Fitzroy River turtle

Hazard and risk

The Project commits to an ongoing hazard and risk assessment process throughout the lifecycle of the Project that will focus on minimisation of risks to people, property and the environment as well as workers on the site.

Both weirs will have been and will be designed and assessed in accordance with the following dam safety guidelines:

- Guidelines for Acceptable Flood Capacity for Water Dams
- Guidelines for Failure Impact Assessment of Water Dams
- Queensland Dam Safety Management Guidelines

Cultural heritage

- Protection of Indigenous cultural heritage values
- Implementation of Cultural Heritage Management Plans

Consultation

GAWB and SunWater are committed to ongoing consultation to enable a structured assessment process to facilitate open, meaningful and accountable public consultation and to engage with relevant stakeholders.

THIS PAGE IS LEFT INTENTIONALLY BLANK

LOWER FITZROY RIVER

INFRASTRUCTURE PROJECT

Appendix B

Factsheets

THIS PAGE IS LEFT INTENTIONALLY BLANK

LOWER FITZROY RIVER

INFRASTRUCTURE PROJECT

PROJECT DESCRIPTION

The Gladstone Area Water Board and SunWater Limited are joint proponents undertaking technical, environmental, social, cultural and economic investigations for the Lower Fitzroy River Infrastructure Project. The Project comprises the construction and operation of a raised Eden Bann Weir and construction and operation of a new weir at Rookwood on the Fitzroy River, Central Queensland.

Eden Bann Weir

Eden Bann Weir is located approximately 62 km north west of Rockhampton on the Fitzroy River.

The existing Eden Bann Weir (Stage 1) was constructed in 1994 to supply water to Stanwell Power Station. It is a conventional concrete weir with a full supply level (FSL) of 14.5 m. Eden Bann Weir is owned and operated by SunWater.

The Project proposes to raise Eden Bann Weir as follows:

- Stage 2 – Raise the existing Eden Bann Weir to FSL 18.2 m AHD
- Stage 3 – Addition of 2 m high flap gates to achieve FSL 20.2 m AHD

Impoundment associated with the raised Eden Bann Weir extends along the Fitzroy River.



Photograph 1: The existing Eden Bann Weir

Rookwood Weir

The proposed Rookwood Weir site is located approximately 66 km south west of Rockhampton on the Fitzroy River.

Proposed development at Rookwood includes:

- Stage 1 – Construct new weir to FSL 45.5 m AHD
- Stage 2 – Addition of 3.5 m high flap gates to FSL 49.0 m AHD

Impoundment associated with the Rookwood Weir extends along the Fitzroy, Mackenzie and Dawson rivers.



Photograph 2: Rookwood Weir site upstream

Project timing

The Project is expected to be staged, with sequencing and timing dependant on a number of demand triggers including existing and new consumers, drought conditions and security of supply requirements. The Project will be implemented by way of a flexible strategy to allow the rapid delivery of water to meet anticipated future demands, when triggered.

A staged approach to development enables proponents to respond to potentially smaller demands in the short-term and progressively respond to increasing and/or larger demand requirements over time through intermediate infrastructure builds until full development is reached.

What is a weir and how is it different to a dam?

Barrage



Photograph 3: Fitzroy Barrage

A barrage is an in-river structure similar to a weir but is located within the tidal zone of a river, resulting in a separation of fresh and marine water.

Weir



Photograph 4: Eden Bann Weir overtopping

A weir is an in-river structure designed such that the highest level of the weir is at, or less than, the high bank of the river. A weir is designed to be overtopped and 'drowned' by flows which exceed the rivers capacity. At down out, the weir is not visible in the river. Weirs are not designed for flood mitigation.

Dam



Photograph 5: Example dam

A dam is an in-valley structure and utilises both the river and surrounding valley. The highest level of a dam will intersect the adjacent hills of the valley and as a result generally impounds a much greater area of land. A dam may be designed to mitigate floods and the spillway is designed to pass flood flows.

LOWER FITZROY RIVER

INFRASTRUCTURE PROJECT

OTHER PROJECT INFRASTRUCTURE

Access to Eden Bann Weir

Existing access to Eden Bann Weir is via the left (northern) bank along the Bruce Highway, local gravel roads (Atkinson Road, Mona Vale Road and Eden Bann Road) and a private road. The Bruce Highway/Atkinson Road intersection will be upgraded to accommodate construction traffic.

A new 12 km access road will be constructed to the right (southern) bank of the Eden Bann Weir off Ridgeland and Marble Ridges roads providing access through to Rockhampton.

Access to Rookwood

The proposed Rookwood Weir site is currently accessible via public roads from the right (eastern) bank, along Third Street, Riverslea Road and Thirsty Creek Road from Gogango.

Thirsty Creek Road and the Capricorn Highway/Third Street intersection will be upgraded to accommodate construction traffic.

Gauging stations

The relocation of existing and/or installation of new gauging stations is proposed as part of the Project as follows:

- SunWater's existing gauging station downstream at Wattlebank will be retained
- SunWater's existing gauge at The Gap immediately upstream of Eden Bann Weir will be recalibrated
- A new gauging station will be installed on a rock bar directly downstream of Rookwood Weir
- The existing Department of Natural Resources and Mines gauging station at Riverslea will be recalibrated

Crossings

River crossing upgrades aim to maintain the connectivity and function of the existing road network and provide improved flood immunity.

The project proposes to:

- Upgrade Glenroy Crossing to single lane bridge
- Upgrade Riverslea Crossing to single lane bridge
- Upgrade Foleyvale Crossing to double lane bridge (Rookwood Weir Stage 2 only)
- Install new culverts at Hanrahan Crossing to accommodate operational releases downstream of Rookwood Weir (flows up to 50 m³/s).

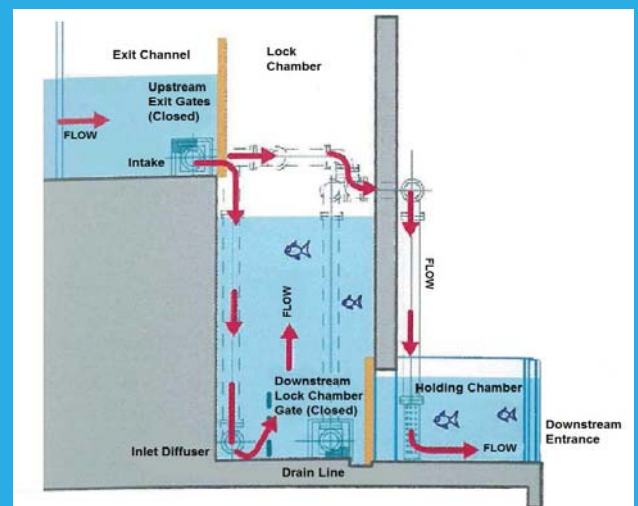


Photograph 1: Riverslea Crossing

Fish locks

Fish passage infrastructure has been designed to preliminary design stage

- Eden Bann Weir fish passage infrastructure:
 - An upgraded fish lock on the left (northern) bank
 - A new fish lock located on the right (southern) bank
 - Caters for high and low reservoir levels for flows from zero to 2700 m³/s.
- Rookwood Weir fish passage infrastructure:
 - A right bank fish lock to cover low and high reservoir levels
 - Cater for flows from a minimum operating level up to 500 m³/s.



Turtle passage

A turtle ramp is proposed for the right (northern) bank at Eden Bann Weir and the right (western) bank at Rookwood Weir.

Turtle ramp comprises a purpose built and appropriately graded concrete lined channel with resting pools and attraction flows.



Photograph 2: Foleyvale Crossing

LOWER FITZROY RIVER

INFRASTRUCTURE PROJECT

PROJECT JUSTIFICATION AND NEED

Background

In December 2004 the Queensland Government, in partnership with local government, committed to developing the Central Queensland Regional Water Supply Strategy, a long term water supply strategy for the region.

The strategy identified that further infrastructure on the Lower Fitzroy River is required in order to provide the appropriate reliability of supply to meet the needs of urban populations, industry and agriculture.

The Project was identified as appropriate infrastructure to satisfy short, medium and long term supply requirements.

Project demands

Future demand for water resources is predicted due to the continued growth of industrial and urban expansion in the Lower Fitzroy and Gladstone areas and potentially some agricultural development within the Fitzroy Agricultural Corridor. In addition to direct increases in demand there is also a potential requirement to improve the level of reliability of the existing water supplies locally and regionally.

Key potential water demand triggers:

- Gladstone Area Water Board (GAWB): water supply to Gladstone via GAWB's proposed Gladstone-Fitzroy Pipeline (30,000 ML/a)
- Rockhampton and Livingstone Shire Councils: to support improved reliability initiatives and increased urban water supplies
- Industry and mining: to support economic growth in Rockhampton's Gracemere-Stanwell Industrial Corridor and industrial demand in the Gladstone region
- Agriculture: Regional Development Australia's Growing Central Queensland initiative; the lower Fitzroy Agricultural Corridor; and linkages to development in Northern Australia and improved agricultural competitiveness regionally

Water resource planning

Water Resource (Fitzroy Basin) Plan 2011

The Water Resource (Fitzroy Basin) Plan 2011 reserves a nominal volume of water (76,000 ML) for strategic water infrastructure on the Fitzroy River as the strategic water infrastructure reserve.

The Project is recognised as strategic water infrastructure to which water allocations may be granted.

Fitzroy Basin Resource Operations Plan

The Fitzroy Basin Resource Operations Plan specifies that submissions to make unallocated water available from the strategic water infrastructure reserve on the Fitzroy River may be made by:

- The Gladstone Area Water Board for up to 30,000 ML of the reserve for urban and industrial water supplies
- A local government authority for up to 4,000 ML of the reserve for urban water supplies for the Capricorn Coast
- A person or entity for up to the remaining 42,000 ML, with no intended use specified

Regulatory framework and environmental assessment process

The Project is a 'controlled action' requiring assessment and approval under the *Environment Protection and Biodiversity Conservation Act 1999*.

The Coordinator-General declared the Project to be a 'coordinated project' for which an EIS is required under the *State Development and Public Works Organisation Act 1971*.

In January 2014, the Project transitioned to assessment through the bilateral assessment process executed between State and Commonwealth governments. A single EIS addresses both State and Commonwealth requirements.

Environmental assessments

Environmental assessment has been undertaken to include:

Scenic amenity and lighting

- Topography, geology and soils
- Contaminated land
- Land use and tenure
- Flora
- Aquatic ecology
- Terrestrial fauna
- Surface water resources
- Groundwater resources
- Water quality
- Air quality
- Greenhouse gas
- Noise and vibration
- Waste
- Transport
- Cultural heritage
- Socio-economic
- Hazard and risk
- Cumulative and consequential impacts
- Matters of national environmental significance

A framework environmental management plan has been prepared to address avoidance, mitigation and management of impacts.

As appropriate offsets are proposed.

LOWER FITZROY RIVER

INFRASTRUCTURE PROJECT

PROJECT ALTERNATIVES

Project alternatives have been considered based on their ability to respond to rapid and emerging demands overtime.

Fitzroy Barrage

Raising the gates of the existing Fitzroy Barrage was considered as part of the Project.

In terms of infrastructure options, raising the Fitzroy Barrage does not satisfy requirements to meet immediate and emerging demands while ensuring capture of available yield from the system. Larger storage options are required.

Nathan Dam

Construction of Nathan Dam on the Dawson River is being proposed by SunWater.

Given the location of Nathan Dam and distance to the Project, together with anticipated demand from Nathan Dam within the Dawson-Callide and Upper Dawson sub-regions, it is unlikely that supply from Nathan Dam will achieve Project objectives and provide an economically viable solution to long-term water supply requirements in the lower Fitzroy.

Connors River Dam

Connors River Dam, located on the Connors River, has received environmental approval with SunWater as the proponent. Supply from Connors River Dam to satisfy the projected demands is not considered viable due to the anticipated transfer losses from the dam to the lower Fitzroy system.

Fitzroy Gap dam

Construction of a dam at the Fitzroy Gap immediately upstream of and within the impoundment of the existing Eden Bann Weir has been previously considered.

Supply from a dam at The Gap would not achieve Project objectives in the short to medium term as construction of a dam does not allow for incremental development in response to increasing demand. A dam at The Gap would also impact the existing Eden Bann Weir.

Non-infrastructure alternatives

Non-infrastructure alternatives to the Project include:

- Demand management strategies (pricing, education, rostering, recycling and water use efficiency)
- Research and development programs to reduce consumption
- Water trading (take up of currently unutilised or underutilised existing allocations)



Photograph 1: Fitzroy River

RELATIONSHIP TO OTHER PROJECTS

Existing infrastructure

The Project will operate in conjunction with the existing Fitzroy Barrage with releases from Rookwood Weir to Eden Bann Weir (existing and raised) to the Fitzroy Barrage for abstraction.

Proposed infrastructure

Awoonga Dam, while regarded as a secure water source, remains the Gladstone Area Water Board's (GAWB) sole water source. GAWB plans to augment its existing system by construction of a second water source.

GAWB has identified the development of the Gladstone-Fitzroy Pipeline (GFP) Project as its preferred delivery mechanism for a second water source. The GFP Project is designed to transfer 30,000 ML of water per annum (and possibly more if required) from the Fitzroy system. Water supply is proposed to be from water secured through the raising of Eden Bann Weir and construction of the new Rookwood Weir.

LOWER FITZROY RIVER

INFRASTRUCTURE PROJECT

ECOLOGY

Desktop assessments, mapping and field surveys were undertaken to determine existing ecological values and potential impacts on terrestrial and aquatic flora and fauna as a result of the Project.

Flora

Approximately 20 ha of Brigalow (*Acacia harpophylla* dominant and co-dominant) threatened ecological community will be impacted by impoundment. Where loss due to impoundment and clearing is unavoidable, offsets are proposed.

It is estimated that 100 black ironbox trees will be impacted by impoundment associated with Rookwood Weir. An offset is proposed to mitigate the unavoidable loss of these trees.

Aquatic ecology

Listed threatened species

No listed fish species of conservation significance have been previously recorded or are predicted to occur within the study area. The Fitzroy River turtle and the estuarine crocodile are known to occur.

Potential Project impacts

Potential impacts to aquatic ecology during construction and operation of the Project include:

- Alteration of aquatic habitats
- Inundation of turtle nesting habitat
- Habitat degradation
- Changes to downstream flow regime
- Fauna injury and mortality
- Restriction of movement
- Increased pest and weed species

Mitigation, management and offsets

The following measures have been developed to address Project impacts:

- Fish locks
- Fish Monitoring Program
- Turtle passage (ramps) and monitoring program
- Fitzroy River turtle species management program
- Fitzroy River turtle offsets:
 - Protection and management of turtle nests
 - Financial settlement offset for loss of aquatic habitat



Photograph 1: Aquatic ecological survey



Photograph 2: Cage trap set up for ecological surveys

Terrestrial fauna

Listed threatened species

A number of threatened terrestrial species listed under the *Nature Conservation Act 1992* (NC Act) and *Environment Protection and Biodiversity Conservation Act 1999* (EPBC Act) were recorded during field surveys.

Common name	EPBC Act status	NC Act status
Squatter pigeon (southern)	Vulnerable	Vulnerable
Black-necked stork	-	Near threatened
Black-chinned honeyeater	-	Near threatened
Cotton pygmy-goose	Near threatened	Near threatened
Little pied bat	-	Near threatened
Echidna	-	Special least concern
Koala	Vulnerable*	Special least concern

* The koala is currently listed as vulnerable under the EPBC Act. At the time of assessment and referral decision (EPBC 2009/56) being made the koala was however not listed as a threatened species.

Potential Project impacts

Potential impacts to terrestrial fauna during construction and operation of the Project include:

- Injury and mortality
- Disruption to behaviour of localised wildlife assemblages
- Loss of terrestrial habitat
- Fragmentation of riparian habitat
- Loss of movement corridors and connectivity
- Increased predation and competition
- Degradation of habitats.

Mitigation, management and offsets

To address these impacts, mitigation measures have been developed and documented in the Project environmental management plan including:

- Pre-clearing surveys
- Project species management program
- Weed and pest control measures
- Revegetation activities

Significant adverse impacts on conservation significant species are not anticipated as a result of the Project.

LOWER FITZROY RIVER

INFRASTRUCTURE PROJECT

FITZROY RIVER TURTLE

The Fitzroy River turtle (*Rheodytes leukops*) is listed as vulnerable under the Commonwealth *Environment Protection and Biodiversity Conservation Act 1999* and the Queensland *Nature Conservation Act 1992*. The Fitzroy River turtle is one of a unique group of Australian freshwater turtles that can extract oxygen from both the air and the water.

Habitat and distribution

The Fitzroy River turtle is endemic to the Fitzroy Basin catchment with the species' distribution extending from the Fitzroy Barrage to the upper reaches of the Dawson, Nogoa and Connors Rivers¹. The Project footprint is considered to support an important population of the Fitzroy River turtle. The species is known to occur within both the Eden Bann Weir and Rookwood Weir Project footprints and in areas upstream and downstream.

Nesting is generally restricted to alluvial sand/loam banks which are deposited during flood events¹. The largest known nesting aggregation for the species occurs approximately 40 km downstream of Eden Bann Weir at Alligator Creek.

Threatening processes

The biggest threat to the survival of the Fitzroy River turtle is the lack of recruitment into the population¹. Predation of nesting banks by feral animals, goannas and water rats and trampling of nests by cattle results in extremely poor survival of egg clutches¹.

Other threatening processes include loss of habitat, alteration of natural flow regime, movement barriers, physical injury and mortality and poor water quality¹.

Project impacts

The potential impacts on the Fitzroy River turtle that may arise as a result of the Project include:

- Loss or alteration of foraging and sheltering resources
- Loss of confirmed and potential nesting habitat
- Potential injury and mortality
- Degradation of habitat
- Restriction of upstream and downstream movement
- Reduction in heterogeneity of aquatic habitats

A detailed assessment of Project impacts on the Fitzroy River turtle has been undertaken as part of the environmental impact assessment including mitigation and management actions. Significant residual impacts are considered likely to remain in relation to operation of the Project and offsets are proposed.



Photograph 1: Fitzroy River turtle



Photograph 2: Potential Fitzroy River turtle nesting habitat in Rookwood Weir Project footprint

Species management program

A species management programme for the Fitzroy River turtle has been developed to provide a framework for the management of impacts throughout the life of the Project. The species management program describes measures to be implemented to avoid and minimise the potential impacts including but not limited to:

- Design features specific to turtle protection
- Turtle passage facility to be included in final detailed design
- Implementation of weed management and feral animal control plans
- Relocation of all turtles and eggs identified during pre-clearance surveys and salvage activities
- Actions to re-establishment of turtle aquatic and nesting habitat within the impoundments
- An operational phase Turtle Monitoring Program will be developed and implemented in consultation with the Department of Environment and Heritage Protection
- Implementation of a turtle movement study during detailed design. This study will continue as part of the five year (minimum) Turtle Monitoring Program during operation to evaluate the performance of the turtle ramps.

Project offset

The protection and management of turtle nests is proposed to offset the Project's impacts on this species. The protection and management of nests will target Project specific impacts as well as address the key processes currently threatening the survival of the species throughout the catchment. These actions will reduce nest predation, increase population recruitment and promote the recovery of the species. In addition to this, a financial settlement offset is proposed for the Project's residual impacts to aquatic habitat.

Source: 1. Limpus, C.J., Limpus, D.J., Hollier, C., Savige, M., McAllister, D. 2011, 'Survey of Freshwater turtle populations and nesting habitat, Tarrus Weir Turtleway Project', Brisbane Department of Environment and Heritage Protection, Queensland Government.



For further information:

Phone: 1800 423 213 Email: fitzroyweirs@ghd.com.au

Write to: Reply Paid 668, Brisbane QLD 4001

Visit: www.fitzroyweirs.com.au

LOWER FITZROY RIVER

INFRASTRUCTURE PROJECT

SOCIAL IMPACT ASSESSMENT AND ECONOMICS

Water security

The most significant benefit of the Project is an increase in water supply for the region. Raising Eden Bann Weir and constructing Rookwood Weir will increase the availability and potentially the reliability of supplemented water supplies.

The Project will provide water to industrial and agricultural customers in the region and will support growing urban communities; benefiting the local, regional, state and national economies.

Workforce profile, local employment and business opportunities

A workforce of approximately 150 persons is anticipated and the majority of employees are likely to be sourced from the local and regional area. No onsite workers accommodation is proposed. Peak workforce levels of approximately 50 people are expected at each river crossing site.

The Project will benefit regional employment and will provide employment opportunities to local communities. It is likely that there will be a demand for local businesses to service the requirements of the construction and operations activities.

Potential landholder impacts and mitigation measures

Impacts within the local area may include:

- Loss of land (construction areas, inundation within river bed and banks)
- Relocation of agricultural infrastructure (pumps, fencing)
- Severance of and/or loss of access to land
- Cattle bogging
- Changes to water entitlements
- Water storage easement and flood buffer

Relative to a demand trigger and confirmation of a defined infrastructure build, landholders impacted will be further consulted and agreements (access, acquisition, compensation, etc.) negotiated and agreed on a one-on-one basis.

To date land impacts have considered land value; improvements; management requirements; severance and productivity.

River crossings

Significantly improved flood immunity for several river crossings will facilitate the movement of people, machinery, equipment and stock in periods of flooding and maintain access to services and facilities.

Management plans and strategies

The following management plans and strategies will be implemented to mitigate social impacts and enhance community benefits:

- Stakeholder Engagement Plan
- Near Neighbour Policy and Grievance Management Process
- Land Acquisition Strategy
- Land Access Protocol
- Weed Management Plan
- Recruitment and procurement plans
- Traffic Management Plan



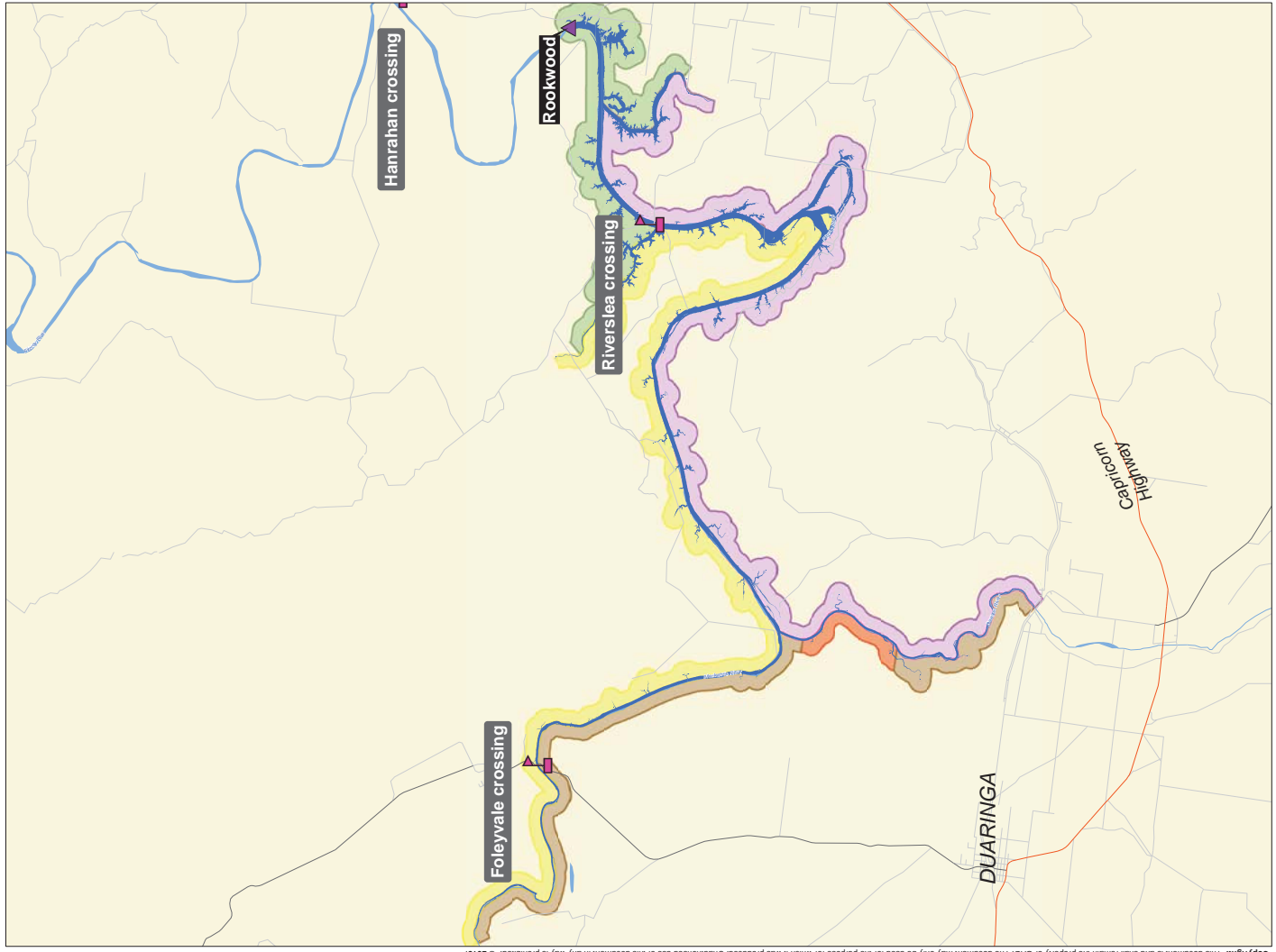
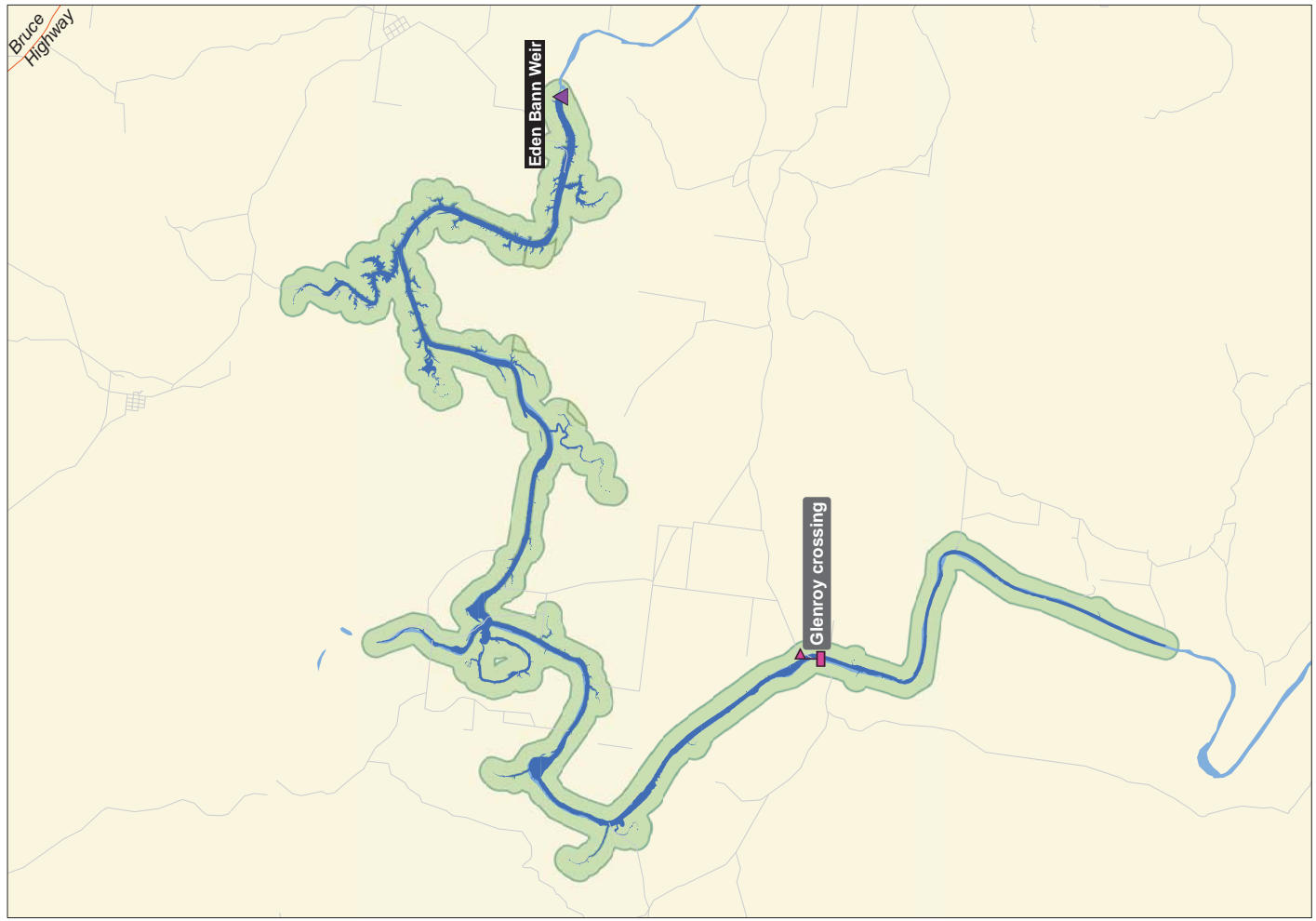
Photograph 1: Riverslea Crossing

CULTURAL HERITAGE

Cultural Heritage Management Plans (CHMPs) have been prepared together with endorsed Aboriginal parties and approved by the State Government in accordance with the *Aboriginal Cultural Heritage Act 2003*.

- Daumbal People
- Gangulu People
- Ghungalu People
- Kangoulu People
- Jetimarala People

No items of non-Indigenous cultural heritage are predicted to be impacted.



LOWER FITZROY RIVER

INFRASTRUCTURE PROJECT

WATER RESOURCES

The Fitzroy Basin is the largest catchment on the eastern seaboard of Australia, extending over an area of approximately 142,000 km² of central and eastern Queensland around the Tropic of Capricorn. It consists of six major subcatchments: Isaac Connors; Nogoia; Comet; Mackenzie; Dawson; and Fitzroy.

Surface water

Regulatory framework

Water resource use and allocation is facilitated through the Water Resource (Fitzroy Basin) Plan 2011 and the Fitzroy Basin Resource Operations Plan.

Supplemented water in the Fitzroy sub-catchment is supplied from:

- Lower Fitzroy Water Supply Scheme: Eden Bann Weir (owned and operated by SunWater)
- Fitzroy Barrage Water Supply Scheme: Fitzroy Barrage (owned and operated by Rockhampton Regional Council)
- Unsupplemented water is managed by the State within the Fitzroy Water Management Area

Yield

- Integrated Quantity Quality Model (IQQM) was used to estimate project yields
- Existing (Fitzroy Barrage and Eden Bann Weir) and proposed (Nathan Dam and Connors River Dam) infrastructure included in IQQM
- Staged development to achieve a yield consistent with the WRP's strategic water infrastructure reserve (nominal volume of 76,000 ML)



Photograph 1: Fitzroy River in flood

Water allocation security assessment

- WRP objectives for reliability of high priority and medium priority supplemented water supplies are achieved
- WRP objectives for reliability of unsupplemented water supply are achieved for all but one group
- Further modelling required to inform ROP amendments
- Existing supply reliability will be maintained for current water allocation holders
- Water harvesting and low flow/no flow entitlements require amendment with regard to the way in which water is accessed
- One-on-one negotiations proposed

Environmental flow assessment

- Seasonal base flow objectives are achieved or are similar to those achieved for the existing system
- Medium to high flow objectives are achieved for all but one project scenario
- First post-winter flow objectives are achieved

Flow regimes

- During operations the storages capture and retain river flows during the wet season allowing for slow, regulated releases through the dry season
- Environmental releases made in accordance with regulations
- Weirs 'fill and spill' quickly; within one to two months
- Analysis of flows pre and post development indicate marginal changes to flows upstream and downstream
- Statistical analysis undertaken for end-of-system flows to the Great Barrier Reef indicate no significant differences

Water quality

The Fitzroy Basin has been largely modified for human land use practices. Influences on water quality within the project area includes:

- Erosion and sediment-laden runoff and erosion from cleared agricultural land
- Increased salinity, pH and metal concentrations from point source inputs associated with mine-water releases in upper sub-catchments
- Changes to flows from weirs and water extractions
- Natural seasonal climatic variability; floods and drought
- Natural (saline and alkaline) geology of soils

External influences on water quality will persist with a raised Eden Bann Weir and new Rookwood Weir in place.

A construction environmental management plan will manage short-term, localised impacts; erosion, run-off and sedimentation and pollutants

An operational management plan will manage longer term water quality impacts, including:

- Water quality monitoring program (dissolved oxygen, turbidity, nutrients, salinity and blue green algae)
- Use of differential (multi-level) offtakes for mixing of water across the water column
- Operational draw down to reduce time at depth and stratification
- Low level outlets to facilitate flushing of sediment

LOWER FITZROY RIVER

INFRASTRUCTURE PROJECT

Flooding

Flood characteristics

The Fitzroy River has a long and well documented history of flooding. Major floods result from either the Dawson or the Mackenzie rivers although significant flooding in the Rockhampton area can also occur from upstream flows and/or heavy rain in the local area below Riverslea Crossing.

- The Fitzroy River historic total annual flow is between almost zero to 22,500,000 ML
- Historic total annual flow in the Dawson River ranges from zero to 5,000,000 ML
- 1 in 2 Annual Exceedance Probability (AEP) events are largely contained within the main river channel
- Anabran flows develop during 1 in 5 AEP events
- Extensive flooding across the river floodplain occurs and anabranches run full during 1 in 20 AEP events
- Floodplains become flooded during a 1 in 50 AEP event
- Coorumburra Road (between 10 Mile Creek and Green Creek): time of closure increased by 1.5 days (1 in 5 AEP)
- Commanche Road (south of Glenroy Crossing): time of closure increased by 0.5 days (1 in 5 AEP)
- Smith Road: time of closure increased by 2 days (1 in 5 AEP)
- Thirsty Creek Road: upgrades to maintain existing flood immunity

Eden Bann Weir

Location	AMTD	Design event afflux (m) per AEP event					
		1 in 2	1 in 5	1 in 10	1 in 20	1 in 50	1 in 100
Riverslea gauge	276 km	0.0	0.0	0.0	0.0	0.0	0.0
Rookwood Weir site	265.3 km	0.0	0.0	0.0	0.0	0.0	0.0
Weir site gauge	154.7 km	2.6	0.3	0.2	0.2	0.2	0.1
The Gap gauge	142.1 km	3.6	0.5	0.3	0.3	0.3	0.2
Eden Bann Weir	141.2 km	3.6	0.5	0.3	0.3	0.3	0.2

Rookwood Weir

Location	AMTD	Design event afflux (m) per AEP event					
		1 in 2	1 in 5	1 in 10	1 in 20	1 in 50	1 in 100
Foleyvale Crossing (Mackenzie River)	323.5 km	0.22	N/A	N/A	N/A	N/A	N/A
Capricorn Highway crossing (Dawson River)	23.2 km	0.09	N/A	N/A	N/A	N/A	N/A
Upstream confluence	310 km	0.6	0.2	0.1	0.0	0.0	0.0
Riverslea gauge	276 km	3.7	0.8	0.4	0.2	0.1	0.0
Rookwood Weir site	265.3 km	5.0	1.2	0.6	0.4	0.2	0.2

Road and river crossings

Crossing	AATOC (days)		Duration of flooding (days above crossing level per event)											
	Current	New*	2 year ARI		5 year ARI		10 year ARI		20 year ARI		50 year ARI		100 year ARI	
			Current	New*	Current	New*	Current	New*	Current	New*	Current	New*	Current	New*
Glenroy	12	5	24	2	24	13	25	16	25	18	25	19	25	20
Riverslea	12	2	24	0	24	2	24	7	24	10	25	13	25	14
Foleyvale	16	3	26	0	36	5	37	9	39	11	41	14	41	14

*New bridge infrastructure in place with a raised Eden Bann Weir and a new Rookwood Weir in operation
ARI = Average recurrence interval

Groundwater

Groundwater management areas

- Fitzroy groundwater management area
- Highlands groundwater management area

Groundwater infrastructure

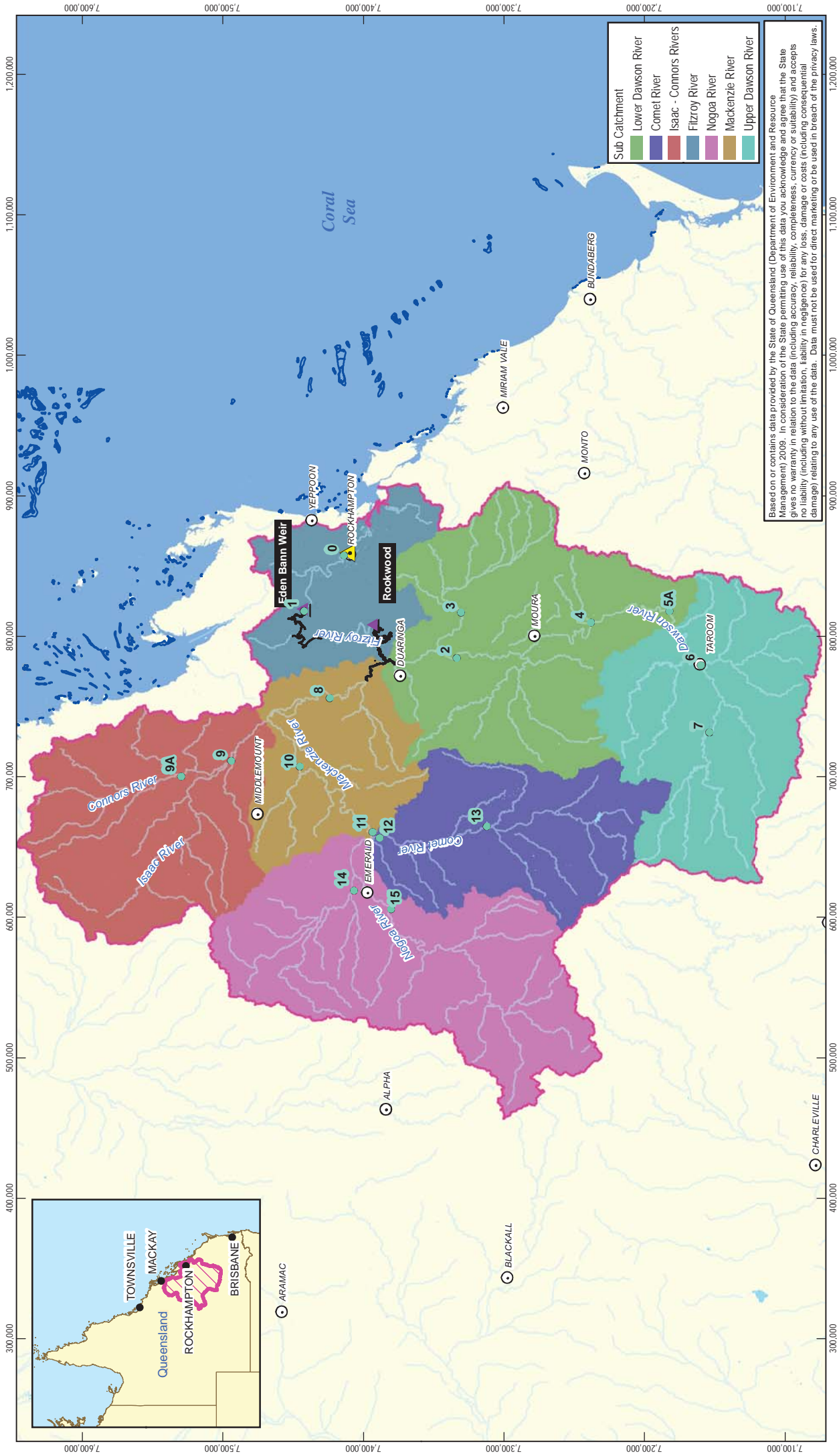
- A single groundwater bore is registered within the Rookwood Weir inundation area
- A negotiated agreement on measures to restore the loss of supply or provision of alternative compensatory measures is proposed

Groundwater dependent ecosystems

- Rivers, springs and wetlands reliant on the expression of groundwater
- GDEs dependent on subsurface presence of groundwater include riparian vegetation (dominated by *Eucalyptus camaldulensis*, *E. tereticornis* and *E. coolabah*, consistent with RE 11.3.25, RE 11.3.4 and RE 11.3.3
- Localised waterlogging of riparian areas and vegetation dieback

Groundwater levels and recharge

- Levels may rise locally at times but still remain below river bank elevations in upstream areas
- No significant reduction in groundwater levels or in the existing recharge to groundwater downstream



1:3,600,000 (at A4)



Map Projection: Universal Transverse Mercator
Horizontal Datum: Geocentric Datum of Australia (GDA94)
Grid: Map Grid of Australia 1994, Zone 55



LEGEND

- Waterway (Major)
- Waterway (Minor)
- Fitzroy Barrage
- Lakes
- Impoundment area
- Surface water nodes

Weir

Location



CLIENTS | PEOPLE | PERFORMANCE



Gladstone Area Water Board, SunWater | Job Number | 41-20736
Lower Fitzroy River Infrastructure Project | Revision | C
Date | 08 Aug 2014

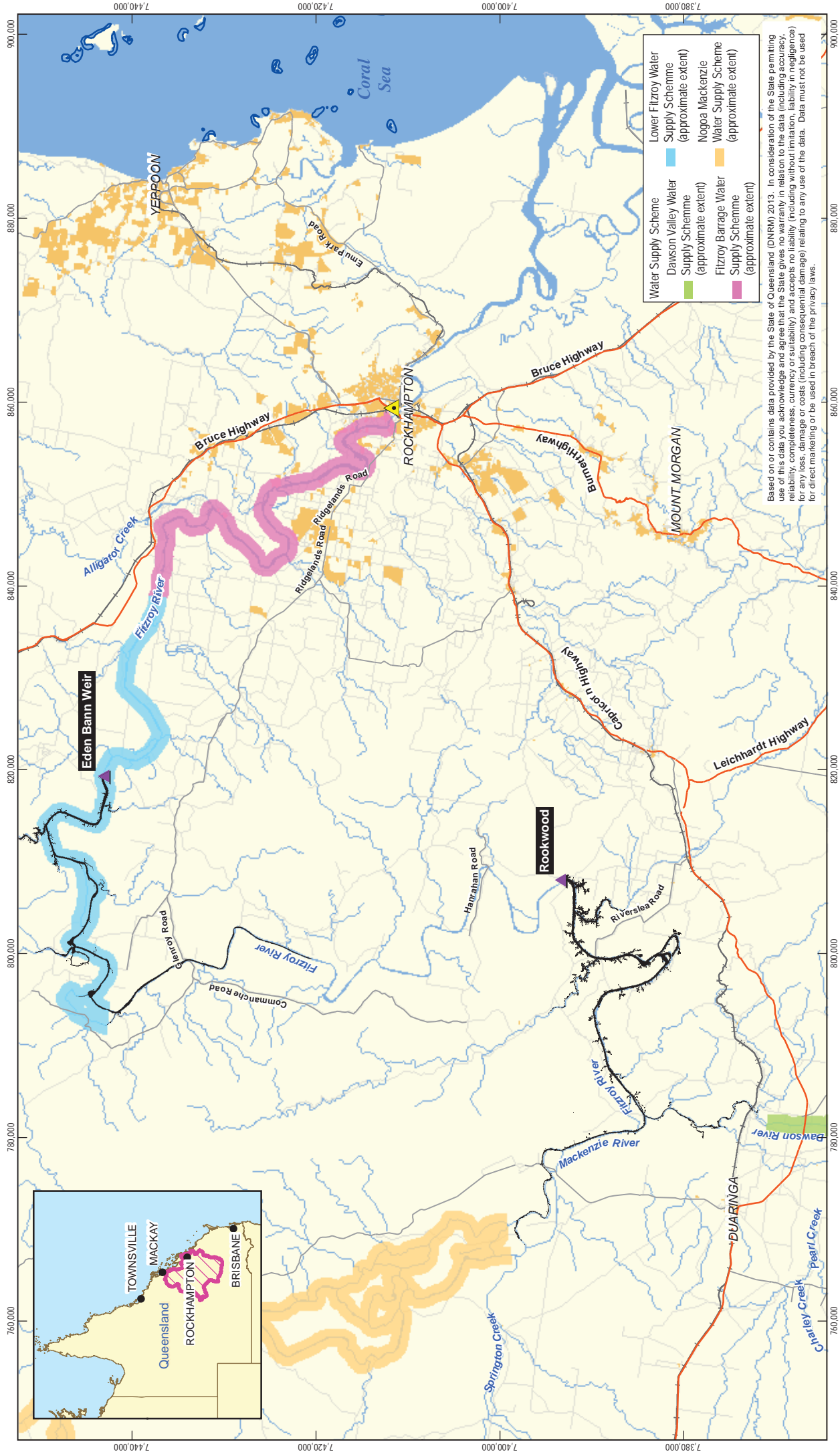
Fitzroy WRP plan area

Level 9, 145 Ann Street Brisbane QLD 4000 Australia | T +61 7 3316 3000 | F +61 7 3316 3333 | E bnmall@ghd.com | W www.ghd.com

G:\4120736\GIS\Projects\MXD\200_Report\4120736_281_Rev_C.mxd

Copyright: This document is and shall remain the property of GHD. The document may only be used for the purpose for which it was produced. Unauthorised use of this document in any way is prohibited. 2014. © 2014. While GHD has taken care to ensure the accuracy of this product, GHD, DERM, SUNWATER, BOM and GA make no representations or warranties about its accuracy, completeness or suitability for any particular purpose. GHD, DERM, SUNWATER, BOM and GA cannot accept liability of any kind (whether in contract, tort or otherwise) for any expenses, losses, damages and/or costs (including indirect or consequential damage) which are or may be incurred as a result of the product being inaccurate, incomplete or unsuitable in any way and for any reason. *Please see Appendix for important copyright information.

Data Source: © Copyright Commonwealth of Australia (Geoscience Australia); Places, Waterways (2007); Sunwater; Weir Locations - 2012; © Copyright Commonwealth of Australia (Bureau of Meteorology); WRP Schedule 5: Digitised surface water nodes (2011). Created by: AJM/S. See Appendix for disclaimers and copyrights.



Based on or contains data provided by the State of Queensland (DNRM) 2013. In consideration of the State permitting use of this data you acknowledge and agree that the State gives no warranty in relation to the data (including accuracy, reliability, completeness, currency or suitability) and accepts no liability (including without limitation, liability in negligence) for any loss, damage or costs (including consequential damage) relating to any use of the data. Data must not be used for direct marketing or be used in breach of the privacy laws.

- Water Supply Scheme
- Dawson Valley Water Supply Scheme (approximate extent)
- Fitzroy Barrage Water Supply Scheme (approximate extent)
- Fitzroy Barrage Water Supply Scheme (approximate extent)

1:550,000 (at A4)

Kilometres

0 5 10 15 20

Map Projection: Universal Transverse Mercator
Horizontal Datum: Geocentric Datum of Australia (GDA94)
Grid: Map Grid of Australia 1994, Zone 55

LEGEND

- Weir
- Location
- Fitzroy Barrage
- Highway
- Major Road
- Streets (Local)
- Fitzroy Basin
- Urbanised Area
- Impoundment area
- Waterway

GHD

CLIENTS | PEOPLE | PERFORMANCE

SunWater
Melting Water Work

Gladstone Area Water Board

Gladstone Area Water Board, SunWater | Job Number | 41-20736
Lower Fitzroy River Infrastructure Project | Revision | C
Date | 31 Oct 2014

Supplemented water supply schemes relative to the Project

LOWER FITZROY RIVER

INFRASTRUCTURE PROJECT

MATTERS OF NATIONAL ENVIRONMENTAL SIGNIFICANCE

The Lower Fitzroy River Infrastructure Project is a 'controlled action' requiring assessment and approval under the Commonwealth *Environment Protection and Biodiversity Conservation Act 1999* (EPBC Act). The relevant controlling provisions in relation to matters of national environmental significance are World Heritage properties, National Heritage places, listed threatened species and ecological communities and listed migratory species.

World Heritage and National Heritage

Located approximately 141 km upstream, the Project would not have any direct impact on the Great Barrier Reef World Heritage Area. With proposed management and mitigation measures in place, no significant indirect impacts to the World or National Heritage values of the Great Barrier Reef are expected as a result of the Project.

Threatened species

Black ironbox

It is estimated that 100 black ironbox (*Eucalyptus raveretiana*) trees will be impacted by impoundment associated with Rookwood Weir. An offset is proposed to mitigate the unavoidable loss of these trees.



Photograph 1: Black ironbox on Melaleuca Creek

Fitzroy River turtle

Unmitigated impacts on the Fitzroy River turtle (*Rheodytes leukops*) arising as a result of the Project are likely to be similar to those caused by current threatening processes, namely the loss of riffle zone habitat, loss of nesting habitat, creation of movement barriers, increased injury and mortality and increased predation.

A species management programme for the Fitzroy River turtle has been developed to provide a framework for the management of impacts on the species throughout the life of the Project.

Significant residual impacts are considered likely to remain in relation to operation of the Project and offsets are proposed.

Threatened ecological communities

Conservatively, approximately 20 ha of Brigalow (*Acacia harpophylla* dominant and co-dominant) threatened ecological community, listed as endangered under the EPBC Act, occurs within the Project footprint. Where loss due to impoundment and clearing is unavoidable, offsets are proposed.



Photograph 2: Brigalow woodland in the vicinity of Rookwood

Migratory species

No significant impacts to migratory and marine species are expected.

Consequential impacts

Land-based run-off from broad scale clearing for industrial development, residential development to support urban growth and for agriculture can include sediment, pesticides and herbicides and other debris and contaminants.

The draft EIS has considered potential impacts from facilitated development on:

- The Great Barrier Reef
- Listed threatened, migratory and marine species and TECs

Industrial and residential/urban development and some agricultural development will occur under State and local government planning scheme provisions and could proceed through alternate means of water supply.

Landholders are increasingly adopting 'best practice' land management actions in relation to agricultural development. This is further supported through initiatives and commitments made in the Commonwealth Government's Reef 2050 Long-Term Sustainability Plan and the State Government's Reef Water Quality Protection Plan.

LOWER FITZROY RIVER

INFRASTRUCTURE PROJECT

PROJECT COMMITMENTS

The Gladstone Area Water Board (GAWB) and SunWater Limited (SunWater), as proponents, are committed to managing and operating their infrastructure in a safe and sustainable manner.

Sustainability considerations have been incorporated throughout planning and design phases. GAWB and SunWater are committed to incorporating ecologically sustainable design considerations in construction, operation and decommissioning of the Project.

In addition to the development of an environmental management plan for the Lower Fitzroy River Infrastructure Project, GAWB and SunWater are committed to implementing of a range of measures to further avoid, mitigate, manage and offset impacts.

Gladstone Area Water Board

GAWB is a Category 1 commercialised Water Authority under the Water Act 2000 and a registered service provider under the *Water Supply (Safety and Reliability) Act 2008*.

GAWB owns and operates Awoonga Dam on the Boyne River along with a network of delivery pipelines, water treatment plants and other bulk water distribution infrastructure in the Gladstone Region.

SunWater Limited

SunWater is a statutory Government Owned Corporation under the *Government Owned Corporations Act 1993*.

SunWater owns and operates the Queensland Government's bulk water supply and distribution infrastructure located throughout regional Queensland, including the existing Eden Bann Weir.

Aquatic fauna

Fish passage

Fish lock arrangements at both Eden Bann Weir and Rookwood Weir will facilitate upstream and downstream movement at low and high reservoir levels for full operational range, provide passage for most flows and cater for small and large bodied fish.

A Fish Monitoring Program will be developed and implemented for the Project. The program will monitor the effectiveness of fish passage infrastructure during both the construction and operation phases.

Turtle passage

Turtle passage facilities (turtle ramps) will be constructed at both Eden Bann Weir and Rookwood Weir to maintain turtle movement and prevent fragmentation of populations. The Fitzroy River turtle species management program will be finalised inclusive of a movement study and monitoring program.

Offsets

The Project commits to providing offsets for significant residual impacts on:

- Black ironbox (*Eucalyptus raveretiana*)
- Brigalow (*Acacia harpophylla* dominant and co-dominant) threatened ecological community
- Fitzroy River turtle (*Rheodytes leukops*)

Cultural heritage management

The Project will comply with the Cultural Heritage Management Plans developed with the endorsed Aboriginal parties and approved by the State Government. Gladstone Area Water Board and SunWater are committed to the implementation of these Cultural Heritage Management Plans and protection of Indigenous cultural heritage values.

Road and crossings

New bridges will be constructed at Glenroy Crossing, Riverslea Crossing and Foleyvale Crossing (relative to infrastructure build and impoundment impacts). A bank of culverts will be installed at Hanrahan Crossing to facilitate access during water releases from Rookwood Weir.

Upgrades of Thirsty Creek Road and the Capricorn Highway/Third Street intersection at Gogango and the Bruce Highway/ Atkinson Road intersection will be undertaken to facilitate construction access and maintain operational access to Rookwood Weir.

Pavement impact assessments, road safety audits and dilapidation surveys will be undertaken as applicable. A detailed road use management plan and site specific traffic management plans will be developed.

Hazard and risk

The Project commits to an ongoing hazard and risk assessment process throughout the lifecycle of the Project that will focus on minimisation of risks to people, property and the environment as well as workers on the site.

Both weirs will have been and will be designed and assessed in accordance with the following dam safety guidelines:

- Guidelines for Acceptable Flood Capacity for Water Dams
- Guidelines for Failure Impact Assessment of Water Dams
- Queensland Dam Safety Management Guidelines

Consultation

GAWB and SunWater are committed to ongoing consultation to enable a structured assessment process to facilitate open, meaningful and accountable public consultation and to engage with relevant stakeholders.



For further information:

Phone: 1800 423 213 Email: fitzroyweirs@ghd.com.au

Write to: Reply Paid 668, Brisbane QLD 4001

Visit: www.fitzroyweirs.com.au

THIS PAGE IS LEFT INTENTIONALLY BLANK

LOWER FITZROY RIVER

INFRASTRUCTURE PROJECT

Appendix B

Project update – Spring 2015

THIS PAGE IS LEFT INTENTIONALLY BLANK

LOWER FITZROY RIVER INFRASTRUCTURE PROJECT

PROJECT UPDATE
NOVEMBER 2015

Dear Stakeholder,

The draft environmental impact statement (EIS) for the project was released for public and regulatory agency review and comment on 18 July 2015.

During the public exhibition period (to 31 August 2015) stakeholders and interested parties were given the opportunity to review the draft EIS, obtain information on the project and to speak with the project team. The consultation involved:

- Access to the draft EIS (online, hardcopy and electronic copy).
Please note the draft EIS is still available at <http://www.statedevelopment.qld.gov.au/lower-fitzroy>
- Community information sessions in Rockhampton, Gogango and Yeppoon
- Project update letters advising of the notification and opportunities for consultation
- Briefings to representatives from regulatory agencies; Rockhampton, Livingstone and Woorabinda councils; Regional Development Australia and the Growing Central Queensland Initiative; Fitzroy Basin Association, and the Capricorn Conservation Council
- Presentation to impacted landholders and rural producers (facilitated by AgForce Queensland – Central Queensland Region).

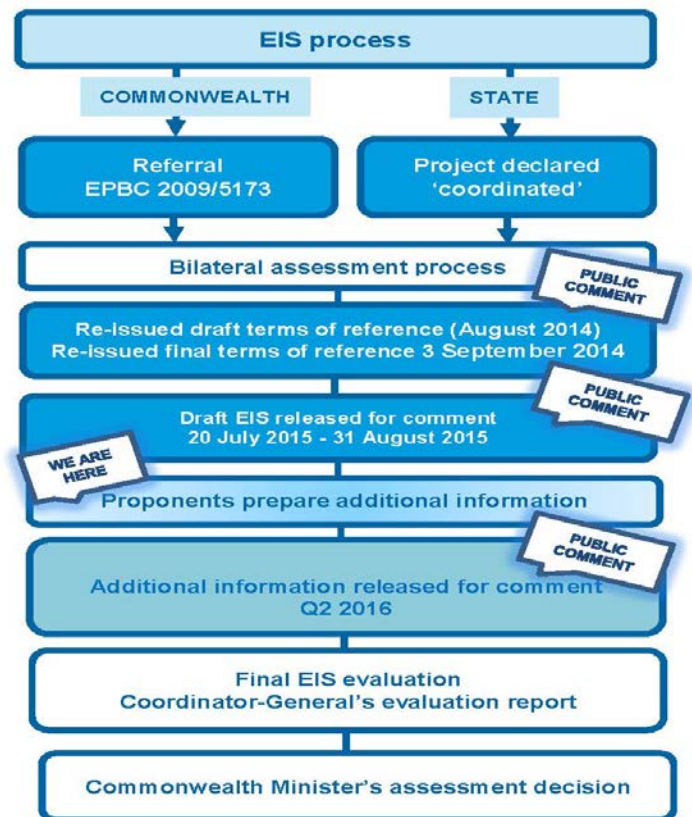


The Office of the Coordinator-General received thirty-seven (37) properly made submissions on the draft EIS. The submissions have been provided to the proponents, Gladstone Area Water Board and SunWater Limited. In summary:

- Ten reflect 'no comment' or a positive comment
- Twelve are from regulatory agencies
- Eleven are from landholders/rural producers
- Three are from special interest groups
- One is a private submission.

The Coordinator-General has advised the proponents that additional information is required to address these submissions. The proponents have begun preparing the additional information. The Coordinator-General has advised the proponents that the additional information will be publically notified. This means that you will have the opportunity to review and make comment on the additional information. It is expected that the additional information will be publically notified in the second quarter of 2016.

The additional information together with the draft EIS is known as the revised draft EIS. The Coordinator-General will then determine whether the revised draft EIS is to be the final EIS which will be the subject of evaluation.



The Gladstone Area Water Board and SunWater Limited remain committed to ongoing engagement and consultation. Please note that we will shortly be reviewing our stakeholder database and a member of the project team may contact you to confirm your details. Should you have queries, wish to change your contact details or know of others that may be interested in the project please contact us directly, via the pathways listed at the bottom of this page.

The Gladstone Area Water Board and SunWater Limited wish to thank you for your continued interest.

Yours faithfully

The Project Team

Contact us
Phone: 1800 423 213
Email: fitzroyweirs@ghd.com.au
Write to: Reply Paid 668, Brisbane QLD 4001
Visit: www.fitzroyweirs.com.au