


FOR NOTES AND LEGEND REFER DRAWING NO. C001

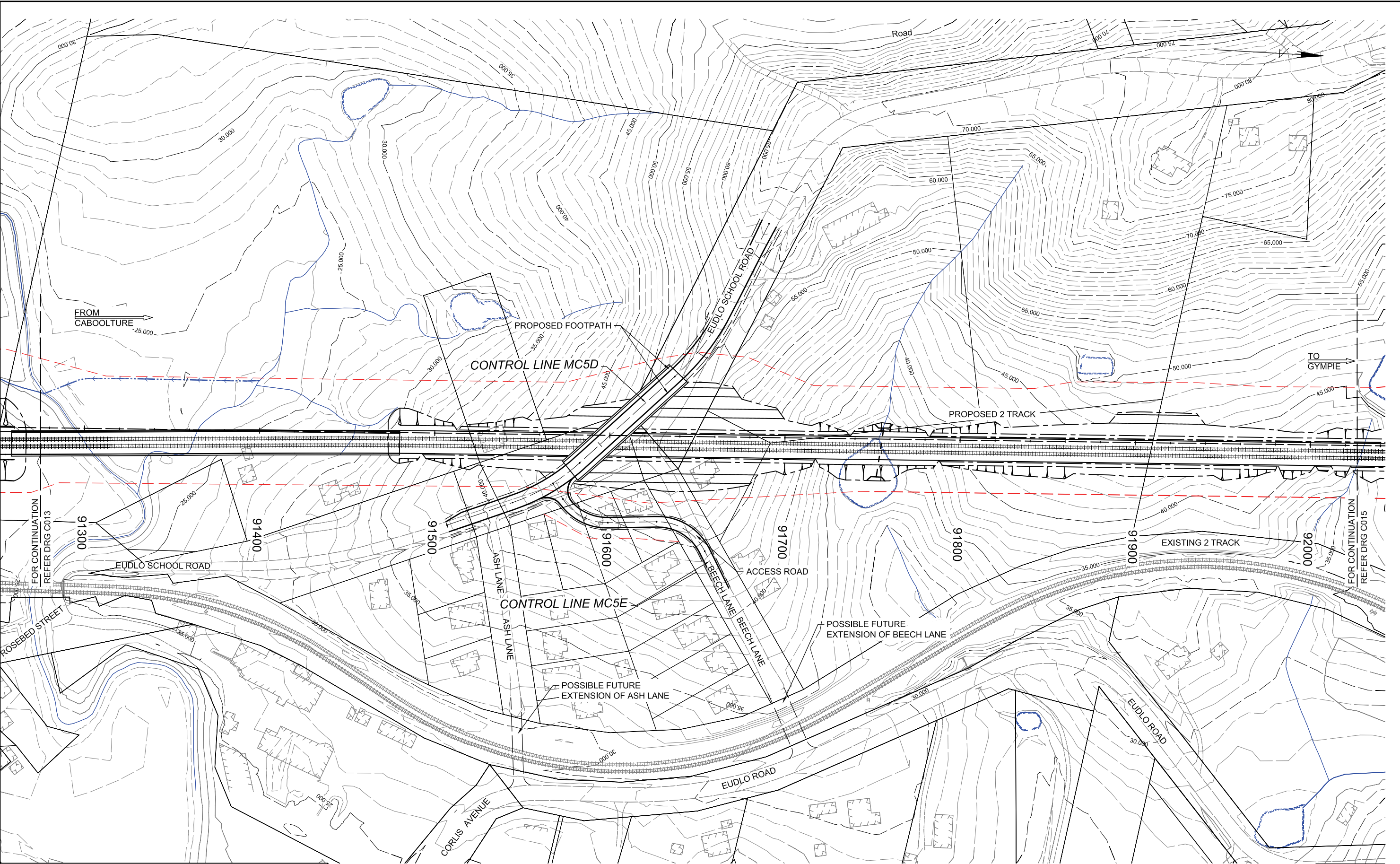
EIS ISSUE

Revisions				Verified	Date	Microfiled	Associated Job Nos	Survey Data			Scales	SUNSHINE COAST REGIONAL COUNCIL LANDSBOROUGH TO NAMBOUR RAIL PROJECT 82 000 m – 102 700 m					NORTH COAST LINE: CABOOLTURE TO GYMPIE MOOLOOLAH ROAD ALIGNMENT TWO TRACK ARRANGEMENT HATTEN ST INTERSECTION OPTION 1					 Queensland Government	
						Auxiliary Drg Nos		Horiz. Datum				Preceding RP	Dist. to start of job (km)	From start to end of job	From end to Following RP	Following RP	Drawn DL	Designed LM	Design Review NM	Engineering Certification			
								Azimuth Datum															
							Height Datum																
A	EIS ISSUE		KNC	–			Survey Books																
										Dimensions shown in meters													
																						Drawing No. SK103A A	
																						Series Number 2 of 12	




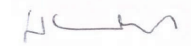




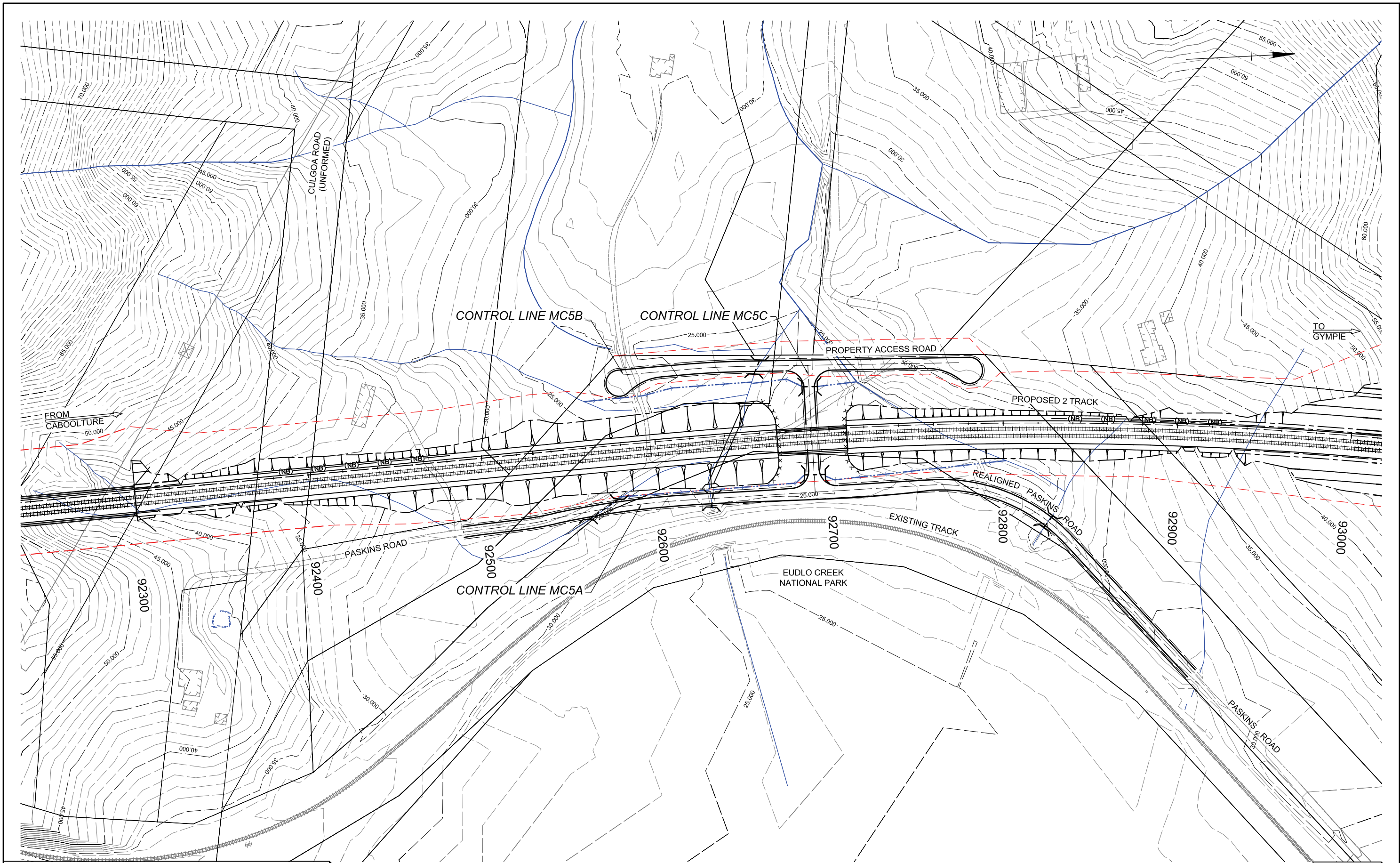


FOR NOTES AND LEGEND REFER DRAWING NO. C001

EIS ISSUE


Revisions				Verified	Date	Microfiled	Associated Job Nos	Survey Data			Scales	SUNSHINE COAST REGIONAL COUNCIL LANDSBOROUGH TO NAMBOUR RAIL PROJECT					NORTH COAST LINE: CABOOLTURE TO GYMPIE EUDLO SCHOOL ROAD ALIGNMENT TWO TRACK ARRANGEMENT					 Queensland Government		
						Horiz. Datum				Azimuth Datum			82 000 m – 102 700 m											
							Auxiliary Drg Nos				0 10 20 30 40 50 60	Reference Points					Drawn DL Checked KC	Designed LM Verified KC	Design Review NM	Engineering Certification  RPEQ No. 8192				
						Height Datum							Preceding RP	Dist. to start of job (km)	From start to end of job	From end to Following RP					Following RP			
A	EIS ISSUE			KNC	–			Survey Books			Dimensions shown in meters											Drawing No.	SK104	A
	–																			Series Number	4	of 12		



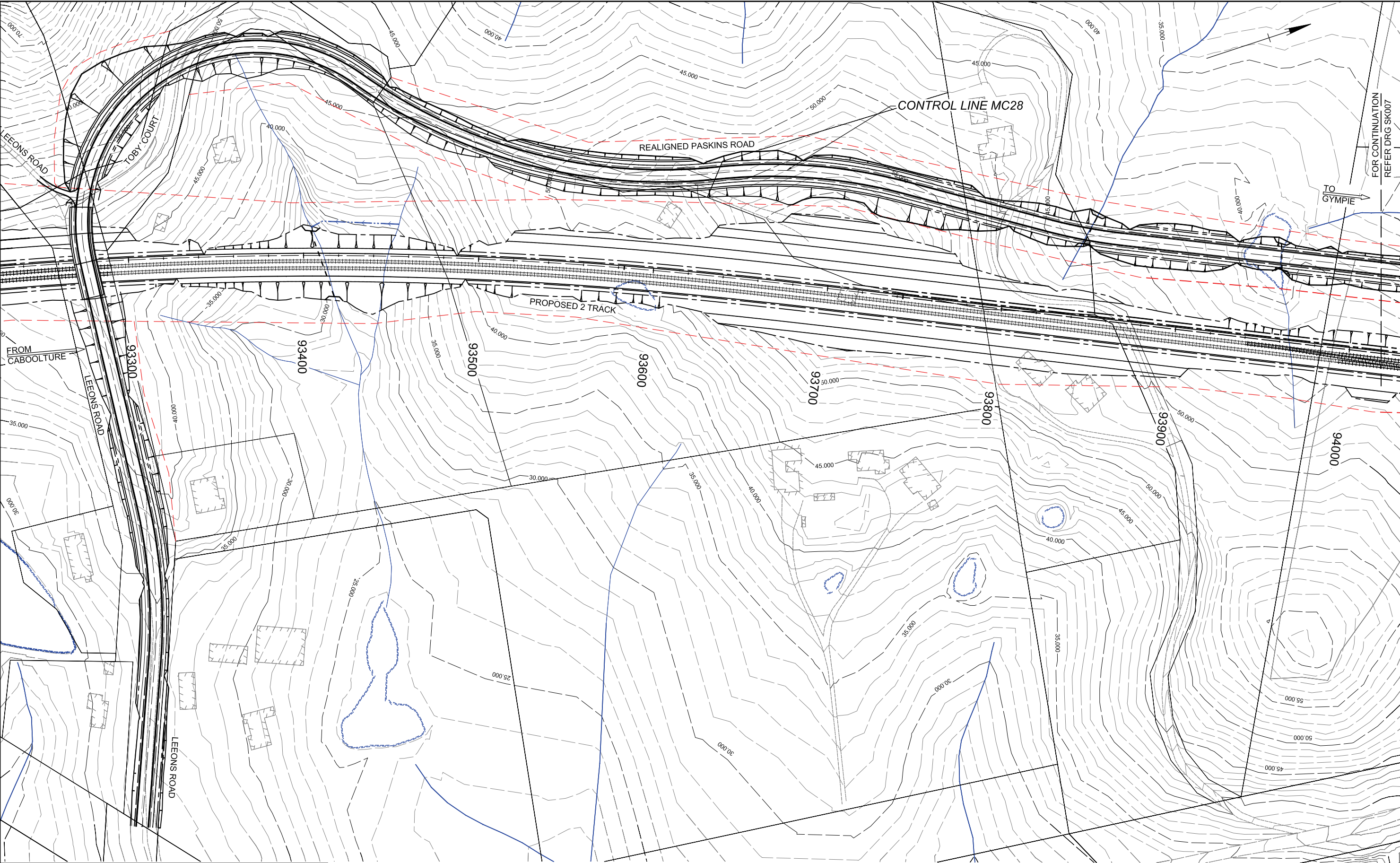


FOR NOTES AND LEGEND REFER DRAWING NO. C001

EIS ISSUE


Revisions		Verified	Date	Microfiled	Associated Job Nos	Survey Data		Scales	SUNSHINE COAST REGIONAL COUNCIL LANDSBOROUGH TO NAMBOUR RAIL PROJECT 82 000 m – 102 700 m				NORTH COAST LINE: CABOOLTURE TO GYMPIE EUDLO ACCESS ROAD ALIGNMENT TWO TRACK ARRANGEMENT					 Queensland Government		
						Horiz. Datum			Azimuth Datum	Reference Points				Drawn DL	Designed LM	Design Review NM	Engineering Certification			
					Auxiliary Drg Nos	Height Datum				0 10 20 30 40 50 60	Preceding RP	Dist. to start of job (km)	From start to end of job	From end to Following RP	Following RP	Checked KC	Verified KC			
A	EIS ISSUE	KNC	–			Survey Books			Dimensions shown in meters											Drawing No.
–																		Series Number	5	of 12





FOR NOTES AND LEGEND REFER DRAWING NO. C001

EIS ISSUE

Revisions				Verified	Date	Microfiled	Associated Job Nos	Survey Data			Scales	SUNSHINE COAST REGIONAL COUNCIL LANDSBOROUGH TO NAMBOUR RAIL PROJECT 82 000 m – 102 700 m				NORTH COAST LINE: CABOOLTURE TO GYMPIE PASKINS / LEEONS ROAD ALIGNMENT TWO TRACK ARRANGEMENT SHEET 1 OF 2				 Queensland Government	
								Horiz. Datum				Reference Points		Drawn DL	Designed LM	Design Review NM	Engineering Certification				
								Azimuth Datum				Preceding RP	Dist. to start of job (km)	From start to end of job	From end to Following RP	Following RP	Checked KC	Verified KC			
A	EIS ISSUE			KNC	-			Height Datum				Dimensions shown in meters								Drawing No. SK106 A	
								Survey Books												Series Number 6 of 12	

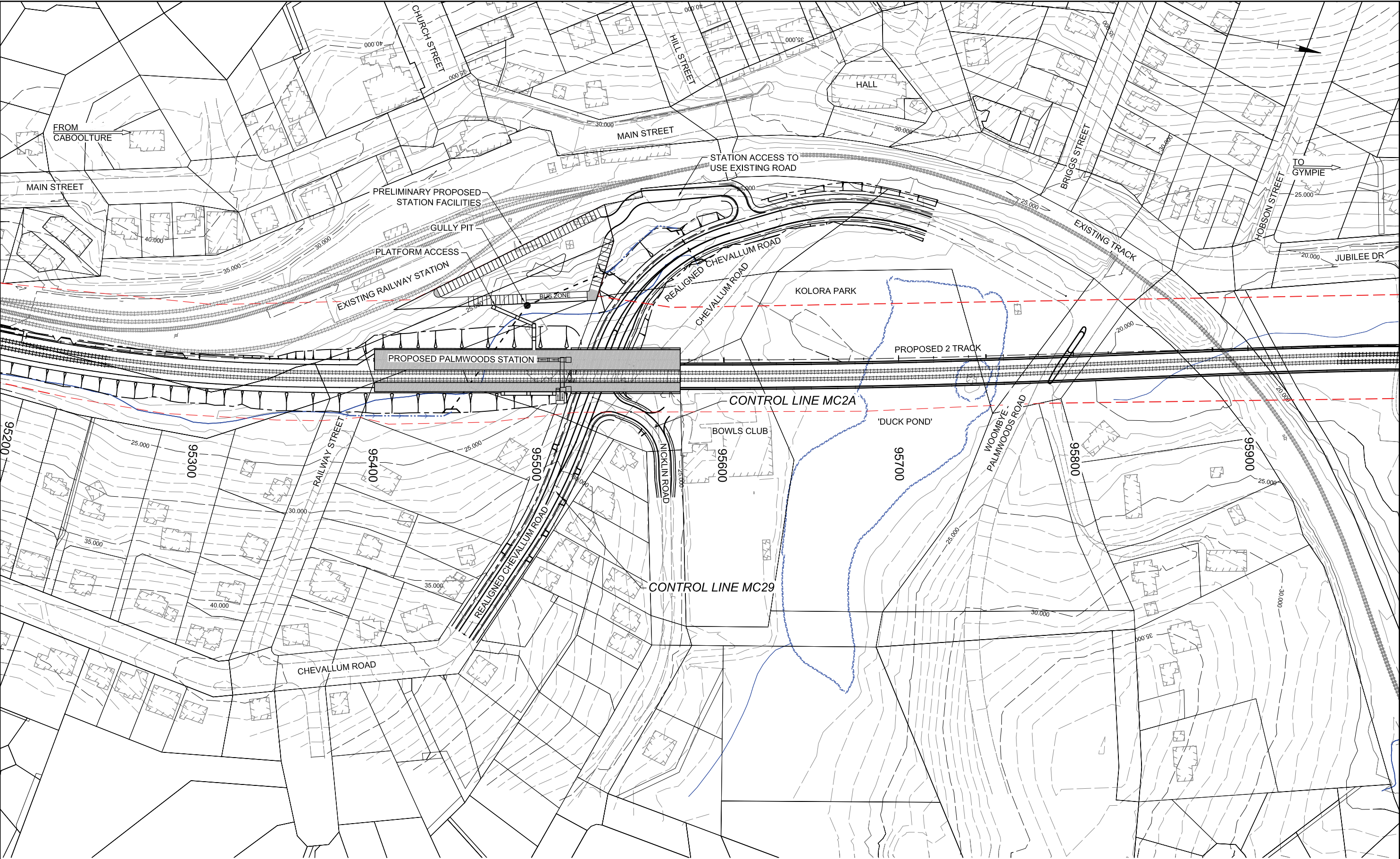







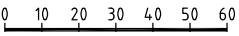





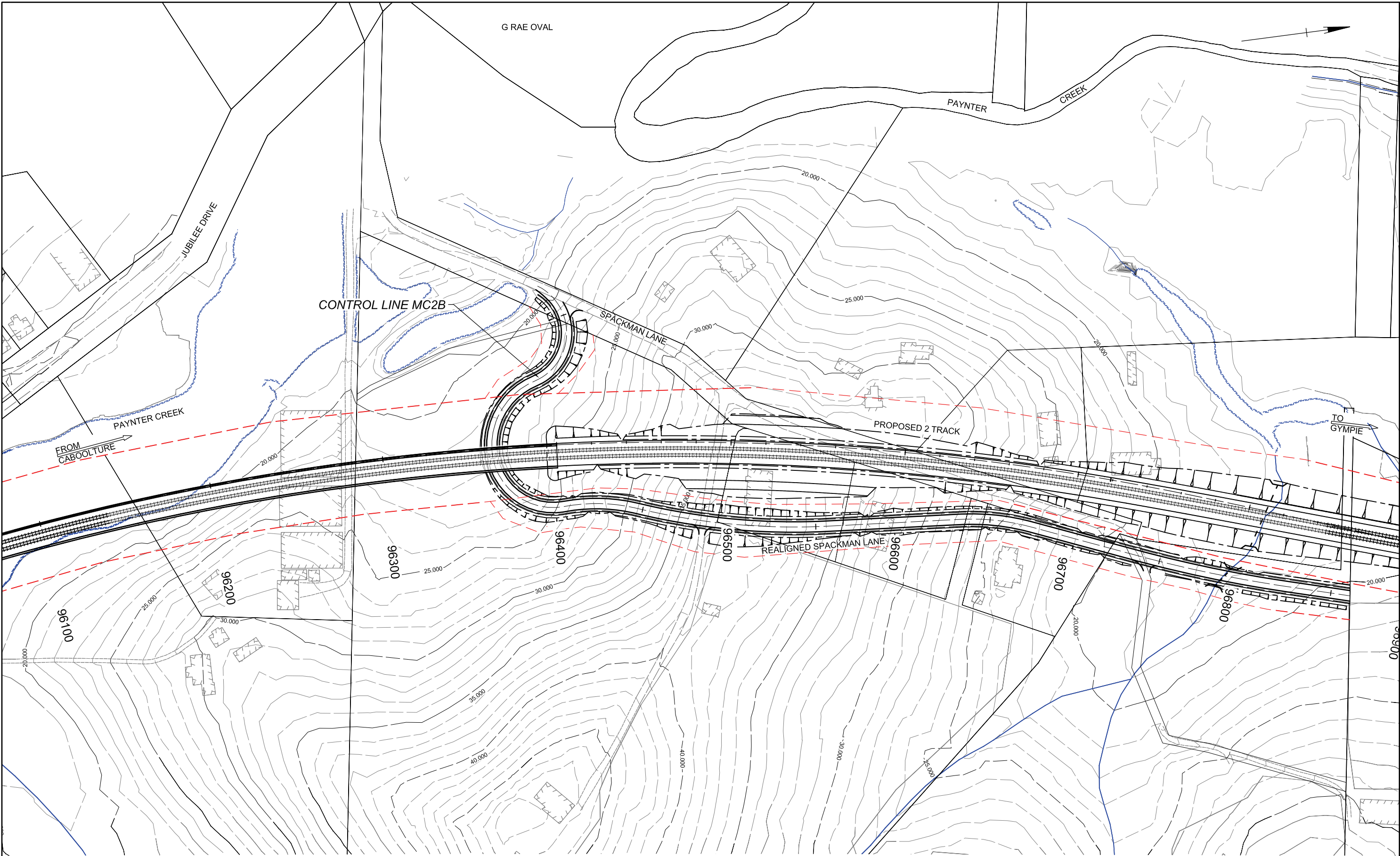


FOR NOTES AND LEGEND REFER DRAWING NO. C001

EIS ISSUE


Revisions				Verified	Date	Microfiled	Associated Job Nos	Survey Data			Scales	SUNSHINE COAST REGIONAL COUNCIL LANDSBOROUGH TO NAMBOUR RAIL PROJECT					NORTH COAST LINE: CABOOLTURE TO GYMPIE REALIGNED CHEVALLUM ROAD TWO TRACK ARRANGEMENT					 Queensland Government					
						Auxiliary Drg Nos		Horiz. Datum				82 000 m – 102 700 m					Reference Points							Drawn DL	Designed VN	Design Review NM	Engineering Certification
								Azimuth Datum			 Dimensions shown in meters					Preceding RP	Dist. to start of job (km)	From start to end of job	From end to Following RP	Following RP	Checked KC	Verified KC	RPEQ No. 8192		Drawing No. SK109	Series Number 9 of 12	
A	EIS ISSUE		KNC	–				Height Datum																			
	–						Survey Books																				



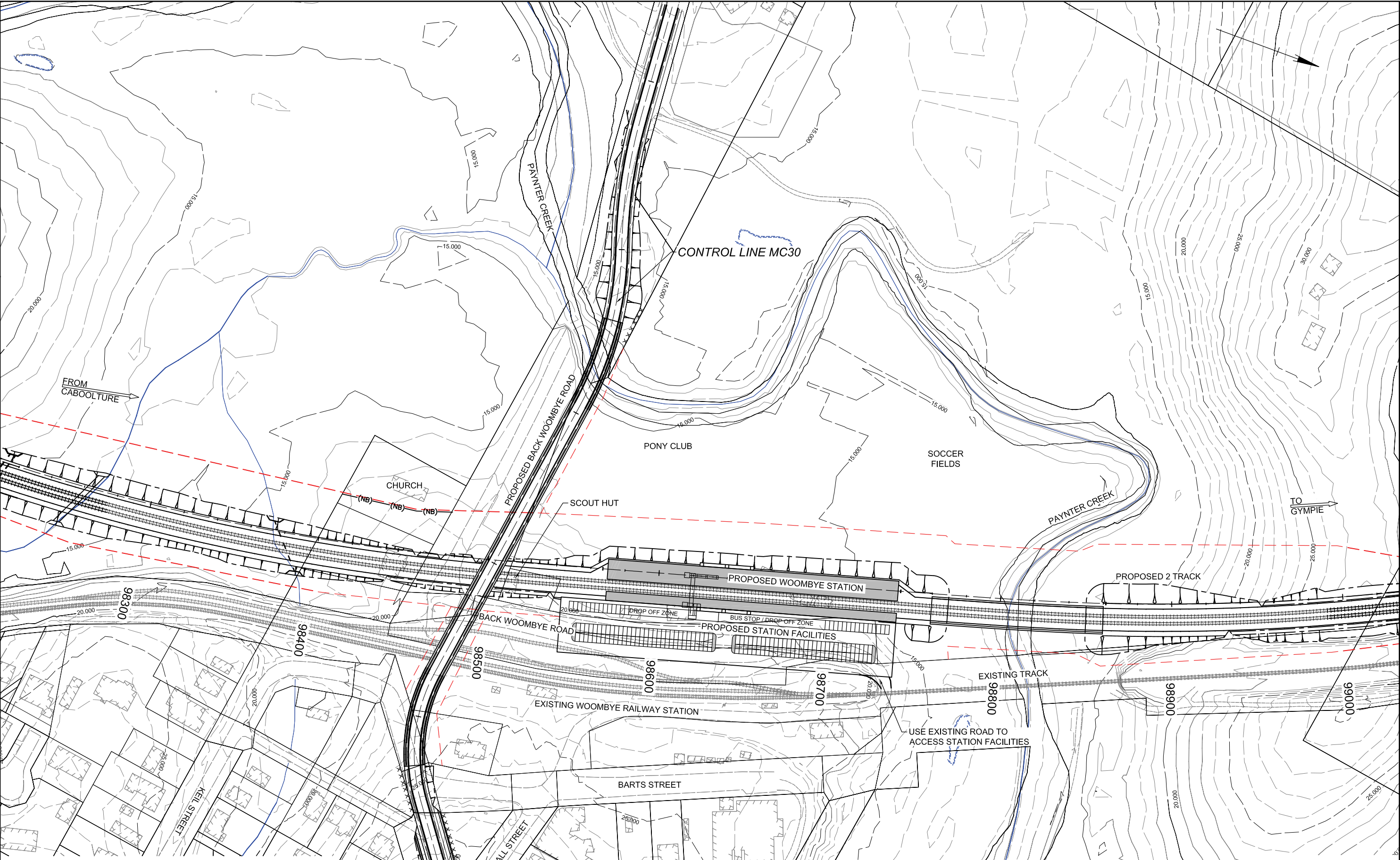


FOR NOTES AND LEGEND REFER DRAWING NO. C001

EIS ISSUE



Revisions				Verified	Date	Microfiled	Associated Job Nos	Survey Data			<div>Scales</div> <div>0102030405060</div>	SUNSHINE COAST REGIONAL COUNCIL					NORTH COAST LINE: CABOOLTURE TO GYMPIE REALIGNED SPACKMAN LANE TWO TRACK ARRANGEMENT					<div></div> <div>Queensland Government</div>			
								Horiz. Datum				LANDSBOROUGH TO NAMBOUR RAIL PROJECT													
								Azimuth Datum				82 000 m – 102 700 m													
								Auxiliary Drg Nos	Height Datum	Reference Points				Drawn DL	Designed LM	Design Review NM	Engineering Certification								
									From start to end of job	From end to Following RP	Following RP	Preceding RP	Dist. to start of job (km)	From start to end of job	From end to Following RP	Following RP	Checked KC	Verified KC							
A EIS ISSUE				KNC	–		Survey Books		Dimensions shown in meters																
–																									
																					Drawing No.		SK110		A
																					Series Number		10		of 12



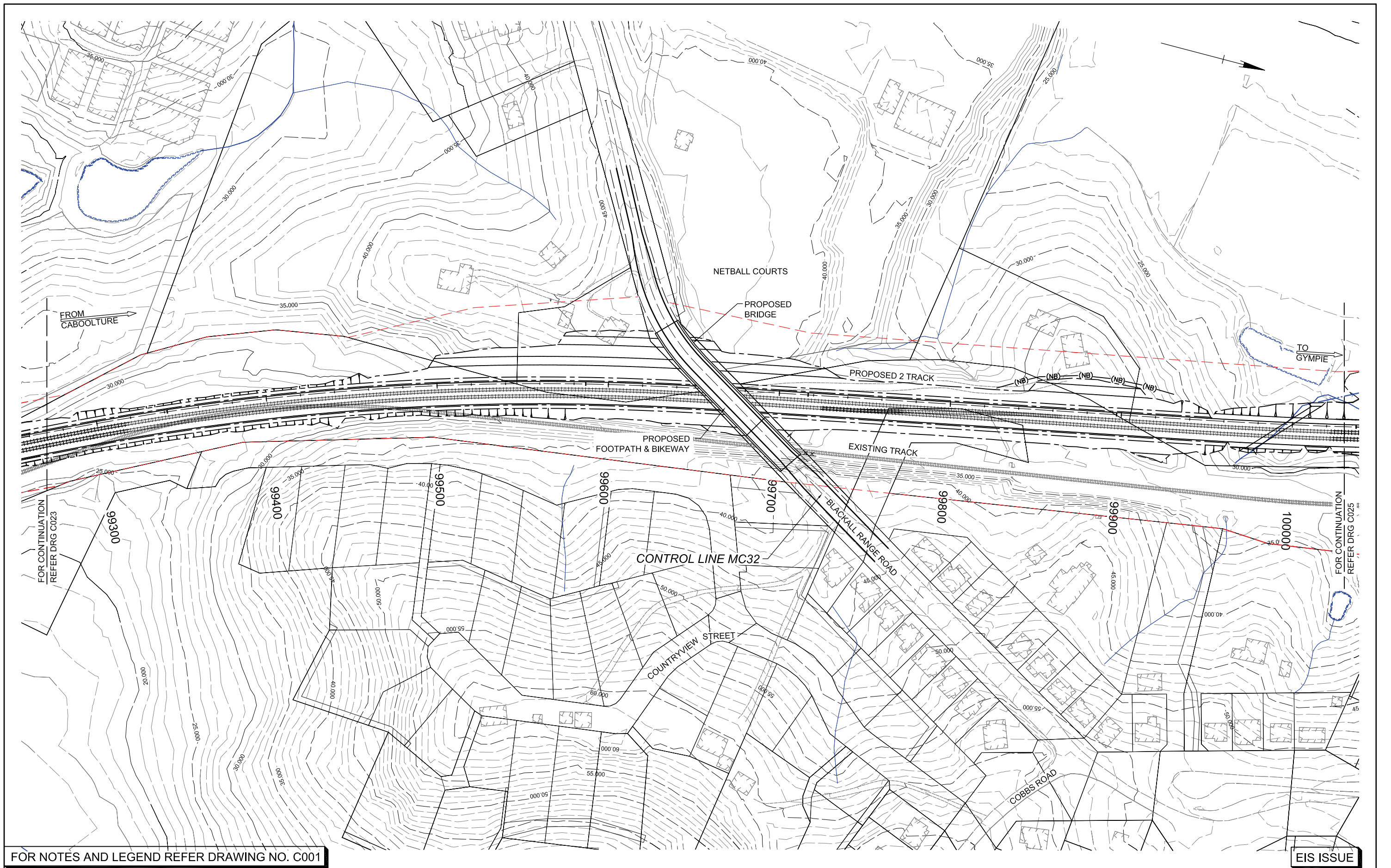




FOR NOTES AND LEGEND REFER DRAWING NO. C001

EIS ISSUE

Revisions				Verified	Date	Microfiled	Associated Job Nos	Survey Data			<div>Scales</div> <div>0102030405060</div>	SUNSHINE COAST REGIONAL COUNCIL				NORTH COAST LINE: CABOOLTURE TO GYMPIE BACK WOOMBYE ROAD ALIGNMENT TWO TRACK ARRANGEMENT				<div></div> <div>Queensland Government</div>			
								Horiz. Datum				LANDSBOROUGH TO NAMBOUR RAIL PROJECT											
								Auxiliary Drg. Nos	Azimuth Datum				82 000 m – 102 700 m										
									Height Datum				Reference Points										
A	EIS ISSUE			KNC	–			Survey Books				Preceding RP	Dist. to start of job (km)	From start to end of job	From end to Following RP	Following RP	Drawn DL	Designed LM	Design Review NM	Engineering Certification			
												Dimensions shown in meters											
																	Checked KC	Verified KC		<div></div> <div>RPEQ No. 8192</div>			
																					Drawing No.	SK111	A
																					Series Number	11	of 12





Revisions		Verified	Date	Microfiled	Associated Job Nos	Survey Data		<div>Scales</div> <div><div>0102030405060</div></div>	SUNSHINE COAST REGIONAL COUNCIL					NORTH COAST LINE: CABOOLTURE TO GYMPIE BLACKALL RANGE ROAD ALIGNMENT TWO TRACK ARRANGEMENT					<div>Queensland Government</div>		
						Horiz. Datum			LANDSBOROUGH TO NAMBOUR RAIL PROJECT												
						Azimuth Datum			82 000 m – 102 700 m												
						Auxiliary Drg Nos	Height Datum		Reference Points				Drawn DL Checked KC	Designed LM Verified KC	Design Review NM	Engineering Certification <div></div> <div>RPEQ No. 8192</div>	Drawing No.	SK112	A		
A	EIS ISSUE	KNC	–						Preceding RP	Dist. to start of job (km)	From start to end of job	From end to Following RP								Following RP	
–							Survey Books		Dimensions shown in meters												