

D. Consultation Report

Table of Contents

1. Introduction	2
2. Stakeholder Identification	4
2.1 Methodology	4
2.2 Situational Analysis	4
2.3 Historical Analysis	4
2.4 Stakeholder Segments	4
3. Community Consultation Process	7
3.1 Hinze Dam Alliance Information Cycle	10
3.1.1 Location of Upstream and Downstream Communities	11
4. Consultation Activities	15
4.1 Community engagement channels	16
5. Consultation Issues & Outcomes	23
5.1 Key Consultation Issues and Outcomes	24
5.2 Community Advisory Committee	24
5.3 Draft EIS consultation	29
5.4 Communication and Consultation Strategy	29
5.4.1 Aim	29
5.4.2 Objectives	29
5.4.3 Communication Programs	30
6. Conclusion	31
6.1 Identification of Key Stakeholders (Needs and Values)	31
6.2 Facilitation of Community Involvement	31
6.3 Enhance Community Awareness and Understanding	31
6.4 Community Input on Key Issues and Mitigation Strategies	31
6.5 Feedback on the Preferred Design	32
6.6 Provision of Information on the Outcomes of Studies	32
6.7 Ongoing Communication and Community Consultation	32
Attachment A Hinze Dam Alliance Print Adverts	33
Attachment B Community Advisory Committee – Terms of Reference	55
Attachment C Breakdown of Issues	59

1. Introduction

This report provides an overview of the community consultation process undertaken as part of the Environmental Impact Statement (EIS) process for Hinze Dam Stage 3 between November 2006 and May 2007.

This chapter will:

- outline the consultation approach and methodology;
- provide an analysis of the stakeholder environment;
- summarise all communication activities undertaken; and
- present issues arising from the consultation process and mitigation strategies.

Public comments received during the EIS display period (during June 2007) will be addressed via a supplementary report produced following the EIS submission period.

This Community Consultation section addresses **Section 1.9 and 1.10** of the Terms of Reference for the Hinze Dam Stage 3 project's Environmental Impact Statement, under Part (4) of the Queensland *State Development and Public Works Organisation Act 1971*.

The Terms of Reference for an EIS act as a guide for the studies to be undertaken. Specifically, the objectives of community consultation for the Hinze Dam Stage 3 project's draft EIS are to:

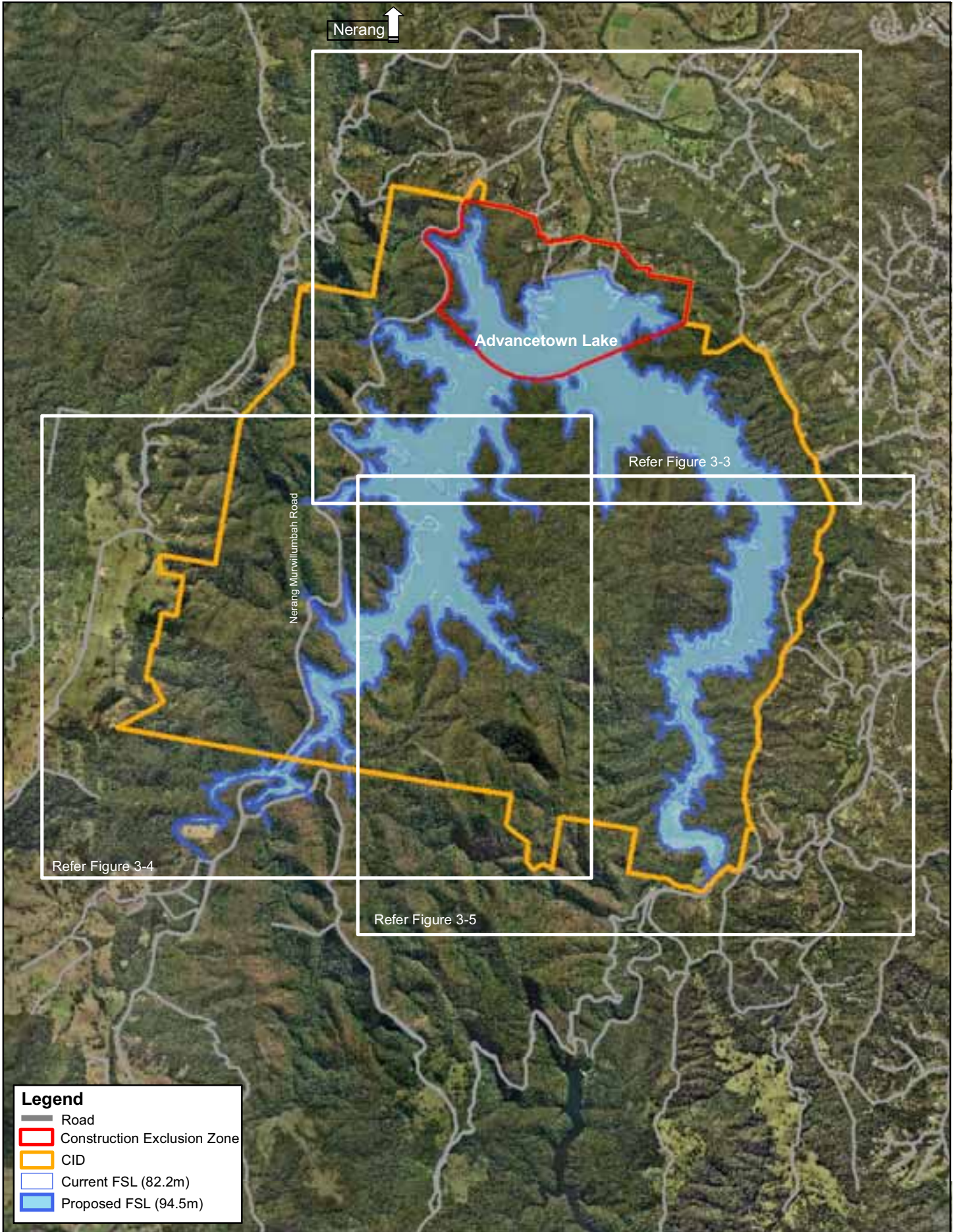
- enhance community awareness and understanding of the project;
- identify key stakeholders (including representatives of stakeholder groups), their needs and values;
- facilitate involvement by the community into project development;
- provide information on the EIS process;
- seek input in terms of key issues and concerns and suggestions to mitigate these concerns;
- seek feedback on the preferred concept;
- provide information on the outcomes of project studies; and
- demonstrate how issues of concern to the community will be sourced, identified and considered during the EIS process.

Consultation catchments for the draft EIS included upstream and downstream suburbs in the vicinity of the dam. Local suburbs included (but were not limited to) Advancetown, Gilston, Nerang, Bonogin, Highland Park, Lower Beechmont, Mudgeeraba, Tallai and Worongary.






Figure 1.1 represents an overview of the local communities around the Hinze Dam and the Community infrastructure Designation CID earmarked by council for public infrastructure development.

Information about Hinze Dam Stage 3 was also made available to the broader Gold Coast Community via the Hinze Dam website, print advertisements (including public notices and project updates) and the Hinze Dam Stage 3 Community Advisory Committee public meetings.

Section 4.1 of this report provides a breakdown of the 20 community engagement channels utilised to inform the public.



Legend

-  Road
-  Construction Exclusion Zone
-  CID
-  Current FSL (82.2m)
-  Proposed FSL (94.5m)



N
↑

0 0.5 1 2
Kilometres

Scale - 1:65,000
Projection: MGA Zone 56

Figure 1-1
Hinze Dam Overview
Hinze Dam Stage 3 EIS

2. Stakeholder Identification

This section outlines the approach taken to identify and segment the values and priorities of each stakeholder group.

2.1 Methodology

The approach taken to identify and classify stakeholders included:

- historical analysis of the impacts associated with Hinze Dam Stage 1 (1976) and Stage 2 (1989) projects;
- qualitative assessment of potential political, social and economic impacts associated with Stage 3;
- development of relevant stakeholder segments by geography and issue; and
- allocation of stakeholders according to geography, values and opinions.

2.2 Situational Analysis

An analysis of the following potential influences was undertaken to assist with issue identification and stakeholder segmentation:

- local and regional drought awareness;
- level four and five water restrictions (with level 6 proposed for Brisbane by late 2007);
- State and Federal government water strategies;
- Gold City Council's water management strategies;
- other water infrastructure projects underway in the Gold Coast region; and
- changing demographics of the Gold Coast region in a climate of significant population growth.

2.3 Historical Analysis

Advancetown and Gilston were settled by Europeans in 1837 and third and fourth generation descendants of those original settlers currently retain property and live in the Hinze Dam area. These stakeholders and other local residents were able to provide their own perspectives on the construction of Hinze Dam Stages 1 and 2. Feedback was sought on the activities and correspondence received by residents during Stage 1 and 2 in 1976 and 1989 respectively.

Equally important has been the recognition that the area was settled well before Europeans by local indigenous groups. To these particular groups, the area holds considerable cultural and historical significance. A key consideration in the planning of this project is the development of the Cultural Heritage Management Plan (CHMP) currently underway with the endorsed Aboriginal Parties (refer to **Section 17**).

2.4 Stakeholder Segments

A process to identify stakeholder segments was implemented to optimise the effectiveness of community consultation activities for Hinze Dam Stage 3. The process of segmentation organised stakeholders into particular segments that are likely to share the same issues, concerns and interests. Following the segmentation process, stakeholders were then regrouped under two tiers including:

- Tier 1 Stakeholders – affected persons; stakeholders that may be directly effected by the project or those with a direct interest; and
- Tier 2 Stakeholders – interested persons; stakeholders with an interest in the project or those that may experience a minor or related impact.

Identified stakeholder segments are outlined in **Table 1** below:

■ **Table 2-1 Stakeholder Segments**

Stakeholders	Profile
Tier 1	Directly impacted/indirectly impacted community members
Inner Hinze Dam Residents (within a 1 km radius)	Residents that lie within a 1 kilometre (km) radius of the embankment wall and are most likely to be directly impacted by day-to-day construction operations.
Outer Hinze Dam Residents (within a 2 km radius)	Residents that lie between a 1 and 2 km radius of the embankment wall. This group will be directly impacted by construction but to a lesser extent than the Inner Hinze Dam residents.
Residents in adjoining suburbs	Residents in neighbouring suburbs greater than 2km from the embankment wall and therefore less likely to be directly affected by construction activities.
Community groups and organisations	Community members belonging to local groups that use the Hinze Dam for outings and organised events.
Recreational/sporting groups and organisations	These stakeholders use the dam and its surrounds for recreational purposes. This group includes (but is not limited to): <ul style="list-style-type: none"> ▪ day trippers and families; ▪ fishing clubs and competitors; ▪ hikers; ▪ horse riders and equestrian clubs. ▪ mountain bikers and competitors; and ▪ rowers and dragon boat competitors.
Business	These stakeholders use the Hinze Dam for business activities and include: <ul style="list-style-type: none"> ▪ food and beverage outlets; ▪ tour groups; ▪ bus operators; and ▪ corporate coaching organisations.
Emergency service organisations	These stakeholders include: <ul style="list-style-type: none"> ▪ The Gilston Bush Fire Brigade; ▪ Lower Beechmont Fire Brigade; ▪ Department Police Service; ▪ Department Emergency Services Ambulance; and ▪ Air Sea Rescue.
Schools	These schools are located in the immediate Hinze Dam area and include: <ul style="list-style-type: none"> ▪ Nerang State Primary School; ▪ Nerang State High School; and ▪ Gilston Primary School.
Tier 2	Broader Gold Coast and Regional / State-wide Community
South East Regional Community	The broader South East Community (including the broader Gold Coast region and State-wide community) with an interest in the Hinze Dam and its ability to supply additional water to the water grid.
Environmental groups and organisations	Local environmental groups with an active interest in all major infrastructure developments on the Gold Coast
Government (State) departments and agencies	These agencies and departments have direct input into the project, for example project approvals, or where aspects of the project impact their areas of jurisdiction. For example:

Stakeholders	Profile
	<ul style="list-style-type: none"> ▪ Department of Environment & Water Resources; ▪ Department of Main Roads; ▪ Department of Natural Resources & Water; ▪ Department of Primary Industries & Fisheries; ▪ Department of State Development; ▪ Environmental Protection Agency; ▪ Queensland Health; ▪ Queensland Transport; and ▪ Queensland Water Commission.
Regional Environmental groups and organisations	Regional environmental groups concerned with the regional, state, national and global project impacts (for example Gecko)
Indigenous groups, traditional owners and organisations	<p>These groups also include recognised Aboriginal parties with an interest in the Hinze Dam Advancetown Lake Area.</p> <p>These groups may have traditional lands affected by new (Stage 3) inundation levels and have therefore registered their interest to become an endorsed party involved in the development of the Cultural Heritage Management Plan (refer Section 17) .</p>

3. Community Consultation Process

As part of the Gold Coast City Council (GCCC) Waterfuture Strategy (2006-2056), GCCC engaged a consortium of private sector partners in an Alliance to raise the height of the Hinze Dam Wall from 93.5 metres to 108.5 metres (above sea level). The Alliance is responsible for both the EIS consultation requirements and on-going communication (pending approval) during construction until 2010.

This section outlines a summary of the consultation approach taken for Hinze Dam Stage 3 to inform the EIS process in terms of potential community impacts and future project benefits. The purpose of the public consultation program is to provide opportunities to encourage and facilitate active community involvement in the draft EIS and provide ongoing information about the project.

Through on-going community consultation, the Hinze Dam Alliance aims to communicate three main project objectives.

The Stage 3 project is required to:

- reduce flooding in the lower Nerang River catchment;
- increase water supply from Hinze Dam to 225 million litres per day; and
- ensure the Dam complies with current safety standards and guidelines.

Table 3-1 provides a summary of project phases and related community consultation activities undertaken to support each phase. Each activity was designed to achieve the aims outlined in **Section 1** of this report.

- **Figure 3-1 Downstream image of the Hinze Dam crest wall and spillway**



■ **Table 3-1 Key project phases and supporting community consultation activities**

Project Phase	Name of Phase	Key Community Consultation Phase and Purpose of Activities
Project Phase 1	Design, Budgeting and Approvals	Key Community Consultation Phase and Purpose of Activities
Preliminary Design & Budgeting	December 2006 – April 2007 <ul style="list-style-type: none"> ▪ Optimisation phase involves initial concept design, preliminary drawings, selection of preferred design option; ▪ Detailed design; ▪ Preparation of the Target Outturn Cost (TOC) of the project; and ▪ Draft Terms of Reference available for public comment (February to March). 	<ul style="list-style-type: none"> ▪ Draft Terms of Reference (ToR) (February 2007 to March 2007) ▪ To announce the preferred design options and invite public comment on the draft Terms of Reference. Key environmental, social and economic matters outlined. ▪ To raise community and stakeholder awareness of the Hinze Dam Alliance Stage 3 project, and the preferred design options including: <ol style="list-style-type: none"> 1. Preferred Spillway Option 1; 2. Preferred Spillway Option 1a (PS1a – endorsed option); and 3. Auxiliary Spillway Option 9. ▪ Provide information on the EIS process (how it is undertaken and what it should investigate). ▪ Identify local issues, impacts and values for consideration by the project team. ▪ Register people for participation in further consultation.
Approvals	April to June 2007 <ul style="list-style-type: none"> ▪ Approval of the TOC; ▪ Draft EIS undertaken; and ▪ Public comment invited on the draft EIS (June 2007). 	<ul style="list-style-type: none"> ▪ Target Project Cost (TOC) Approval (June 2007) ▪ To inform key stakeholders and the wider community about GCCC's deliberations regarding the total project cost for Hinze Dam Stage 3. ▪ Collation of Draft Environmental Impact Statement (EIS) ▪ Gather information on community issues and potential impacts for input into the final EIS. ▪ Seek community input into the impact assessment on issues, potential benefits and possible mitigation strategies. ▪ Continue consultation with stakeholders. ▪ Public Display of draft EIS during June 2007 ▪ Invite public comment on the draft EIS and notify the community about statutory display locations and draft EIS information sessions. ▪ Provide information to stakeholders and community members to enable their review of the EIS, including potential impacts and benefits and proposed mitigation measures. ▪ Obtain input from community members and government agencies on the draft EIS.
	June to August 2007 <ul style="list-style-type: none"> ▪ Supplementary EIS report submitted 	<ul style="list-style-type: none"> ▪ Supplementary Report (June to August 2007) ▪ Consider formal submissions made by the community members and government agencies on the draft EIS to inform the supplementary report.

Project Phase	Name of Phase	Key Community Consultation Phase and Purpose of Activities
	<p>August – September 2007</p> <ul style="list-style-type: none"> ▪ Final EIS approval 	<p>Coordinator-General (CoG) (August – September 2007)</p> <ul style="list-style-type: none"> ▪ Final approval of the supplementary report will reside with the Coordinator-General, Department of Infrastructure. ▪ Department of Environment and Heritage (DEH) will also determine approval conditions or non-approval with reasons.
Project Phase 2	Construction	Key Community Consultation Phase and Purpose of Activities
<p>Construction (pending approvals)</p>	<p>September to late 2010</p> <ul style="list-style-type: none"> ▪ Early works – construction team will mobilise to Hinze Dam; and ▪ Construction will commence during October 2007 (pending approvals). 	<p>Construction phase (September 2007 to late 2010)</p> <ul style="list-style-type: none"> ▪ Consultation on the construction process to include key timings, construction updates, project mitigation measures for dust, noise and traffic flow, further investigations such as pre-construction condition surveys for houses within 1km of construction and environmental management plans. ▪ On-going consultation between the community and the Hinze Dam Alliance during construction to deal with any community complaints.
Project Delivery	<p>Delivery of Stage 3 Goals (by late 2010)</p> <ul style="list-style-type: none"> ▪ Dam safety achieved to ensure the Dam complies with current safety standards and guidelines; ▪ Flood mitigation achieved to reduce flooding in the lower Nerang River catchment; and ▪ Maximum increased storage levels achieved (increased water supply from Hinze Dam to 225 million litres per day). 	<p>Delivery phase (Late 2010)</p> <ul style="list-style-type: none"> ▪ Consultation between the community and the Hinze Dam Alliance will continue until operational handover to Gold Coast Water.
Project Phase 3	Operational Handover	Key Community Consultation Phase and Purpose of Activities
<p>Operational Handover Late 2010</p>	<p>Alliance hands over dam operations to Gold Coast Water (GCW); and Hinze Dam continues as the main water supply for Gold Coast Region (owned by GCCC).</p>	<ul style="list-style-type: none"> ▪ Information dispersal to the Hinze Dam and Gold Coast Community about project completion and operational handover to GCW.

3.1 Hinze Dam Alliance Information Cycle

The community consultation process was facilitated by transparent information flow. **Figure 3-2** illustrates how stakeholder information and communication is integrated into the Hinze Dam Alliance. This process of gathering, collating and sharing information is ongoing and will continue for the life of the project to facilitate organisational communication and in turn, achieve an optimal outcome for the project team and individuals directly or indirectly affected by Stage 3.

- **Figure 3-2 Hinze Dam Alliance Information Cycle**



The Hinze Dam Alliance Information Cycle also refers to the:

- **Alliance Leadership Group (ALG)** that comprises six senior representatives, drawn from each corporate partner;
- **Alliance Project Management Team (AMPT)** that comprises thirteen members from internal project teams including Construction, Optimisation and Dam Design, Target Outturn Cost Team, Environmental Approvals, Recreation Planning, Stakeholder Management and Community Consultation, representatives from Gold Coast City Council and Gold Coast Water; and
- **Alliance Team** which includes all personnel from the Gold Coast City Council, Sinclair Knight Merz Pty Ltd, Thiess Pty Ltd and URS Pty Ltd.

Community consultation activities (including public engagement events) revolved around the identification of key upstream and downstream suburbs from the dam crest wall.

3.1.1 Location of Upstream and Downstream Communities

The consultation catchments for the Hinze Dam Stage 3 project involved Tier 1 and 2 stakeholders located upstream and downstream from the dam crest wall including (but not limited to) the following suburbs.

Suburbs Downstream from the dam crest wall:

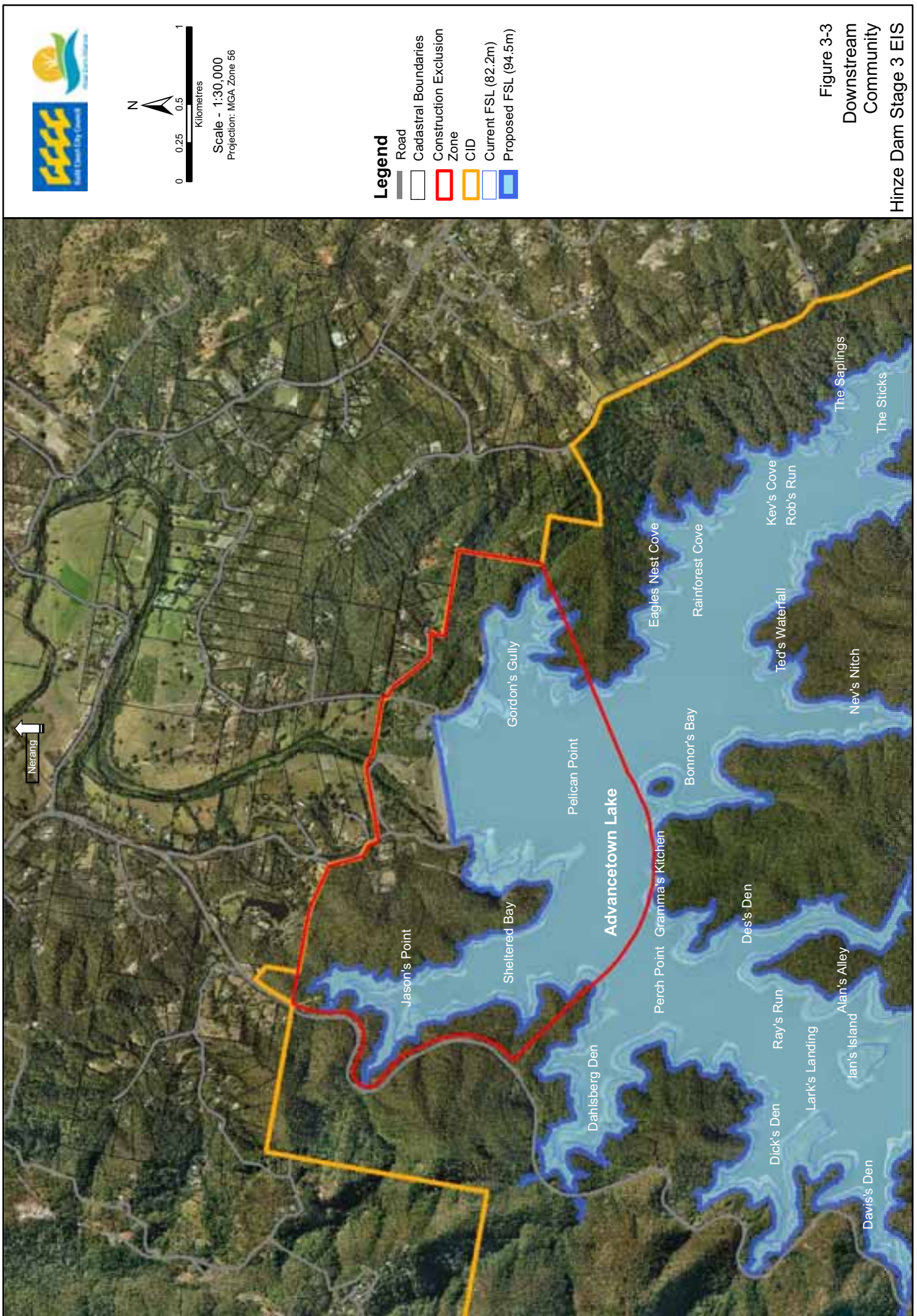
- Advancetown;
- Gilston;
- Nerang;
- Clagiraba;
- Lower Beechmont;
- Highland Park;
- Southport;
- Helevensvale; and
- Worongary.

Suburbs upstream from the dam crest wall:

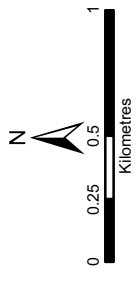
- Mudgeeraba;
- Springbrook;
- Numinbah Valley;
- Tallai;
- Bonogin; and
- Palm Beach.

Figure 3-3, Figure 3-4 and Figure 3-5 provide a graphical representation of upstream and downstream communities involved in the consultation process. Consultation with residents living in upstream and downstream communities highlighted key issues as outlined in **Section 5** of this report.

The Social Impact Assessment of the draft EIS provides a detailed description of upstream and downstream communities around the Nerang River catchments (refer **Section 16**).



Nerang ↑



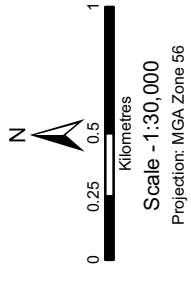
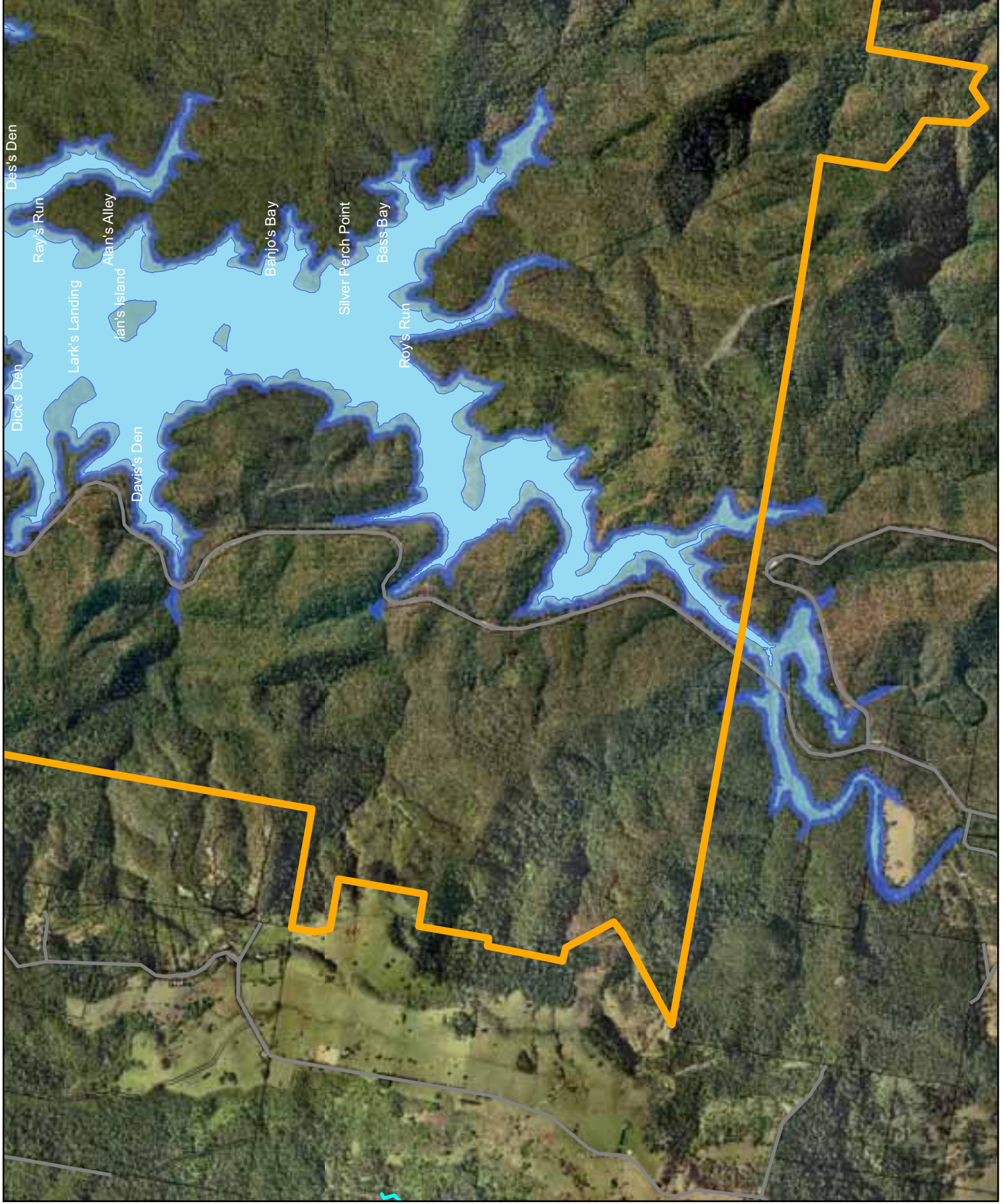
Scale - 1:30,000
Projection: MGA Zone 56

Legend

-  Road
-  Cadastral Boundaries
-  Construction Exclusion Zone
-  CID
-  Current FSL (82.2m)
-  Proposed FSL (94.5m)

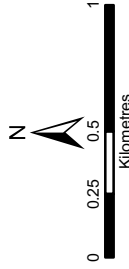
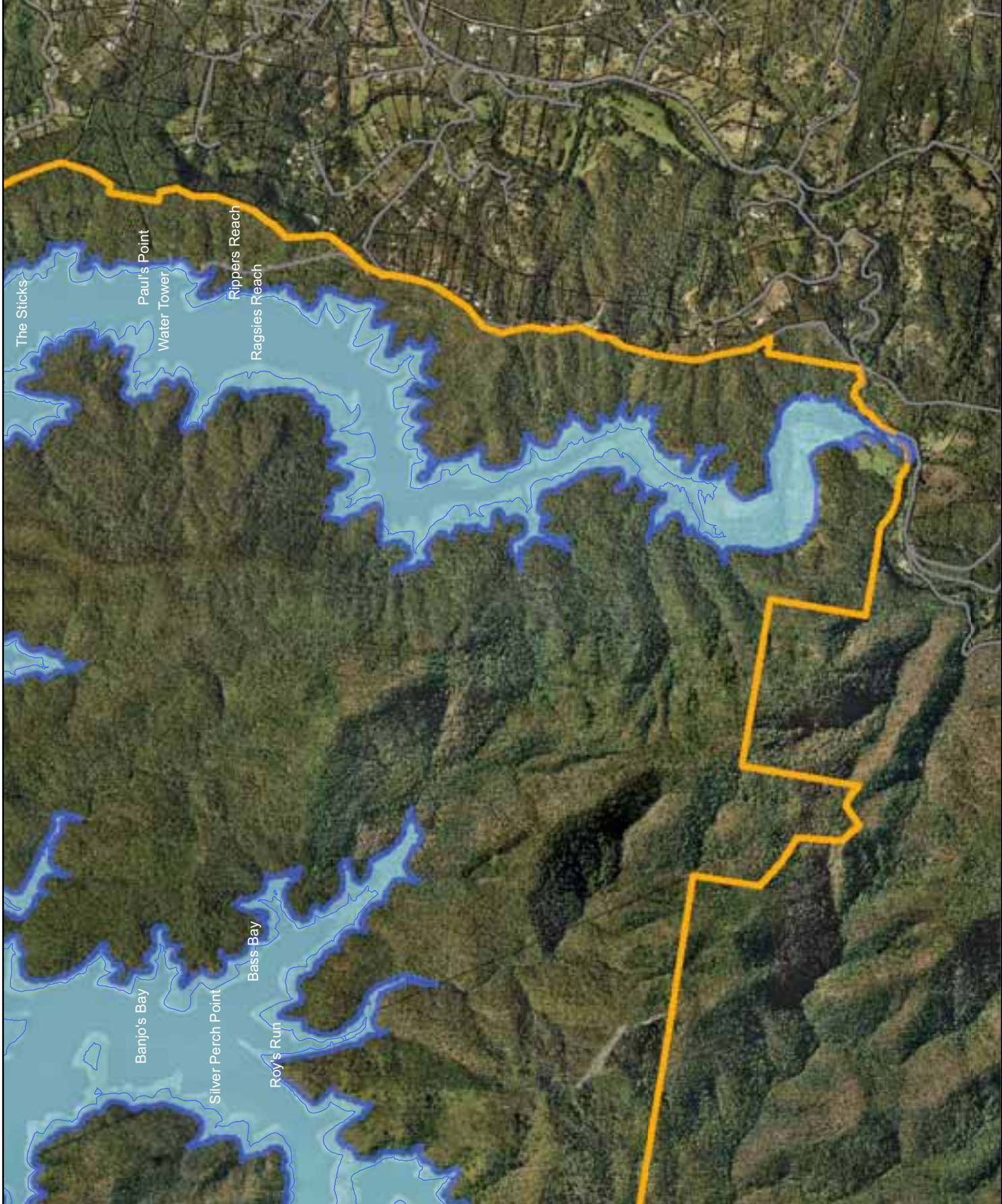
Figure 3-3
Downstream
Community
Hinze Dam Stage 3 EIS

This figure must be read in conjunction with the data disclosure in Appendix H of this document



- Legend**
- Road
 - Cadastral Boundaries
 - CID
 - Current FSL (82.2m)
 - Proposed FSL (94.5m)

Figure 3-4
Upstream
Community (West)
Hinze Dam Stage 3 EIS



Scale - 1:30,000
 Projection: MGA Zone 56

Legend

- Road
- Cadastral Boundaries
- CID
- Current FSL (82.2m)
- Proposed FSL (94.5m)

Figure 3-5
 Upstream
 Community (East)
 Hinze Dam Stage 3 EIS

4. Consultation Activities

A multitude of engagement mechanisms were employed to reach the diverse range of stakeholders involved in the project. As per GCCC's principles of community engagement, activities were chosen to inform, consult, involve and collaborate with those parties identified as either Interested or Affected Persons¹.

Since November 2007, approximately 690 stakeholders were directly engaged via 20 communication channels with 350 to 5000 residents indirectly engaged in the immediate Hinze Dam area. The Alliance implemented a total of 326 communication activities during this timeframe.

In addition to direct mail pieces, project website updates, print advertisements, fact sheets and public displays, the Hinze Dam Stage 3 consultation team placed a permanent liaison officer on-site, held face-to-face meetings with over 200 stakeholders and held six Community Advisory Committee (CAC) meetings which also accommodated attendance by the general public.

A high degree of consultation and collaboration has been achieved throughout the EIS process. The enquiry-by-design² approach taken during concept design and options analysis is one example. During this phase the project team invited members of the public to formal project design workshops to ensure the multi-criteria analysis process was similarly understood and validated by all participants.

■ Figure 4-1 Community Information Session at Gilston Hall



¹ GCCC's Principles of Engagement are based on the IAP2 Spectrum of Public Participation © 2006

² Enquiry-by-Design is a process by which the actual design of the dam infrastructure was used as stimulus for community input.

4.1 Community engagement channels

The Hinze Dam Alliance used up to 20 engagement channels to communicate with internal and external stakeholders with each channel varying in degrees of complexity.

The ultimate aim was to reach a collaborative outcome (via the CAC and other targeted consultation activities) to ensure the safest concept design for optimum flood mitigation options.

Since the commencement of community consultation during November 2006 until May 2007, the Hinze Dam Alliance has directly engaged:

- 690 individuals via 316 community consultation activities (which included the opportunity for local residents to benefit from local house calls from alliance members, participate in community events; information sessions; staffed library displays; public meetings; CAC meetings; and face-to-face meetings);
- approximately 170 interested stakeholders through six CAC meetings with a flow-on effect of 1,700 persons indirectly engaged through respective community groups; and
- received over 230 enquires and comments from community members.

The Alliance has also indirectly engaged 350 to 5,000 residents in the immediate Hinze Dam area via direct mail drops, print advertisements, road signage and Council website project updates.

Refer to table **Table 4-1** for a breakdown of community engagement channels used during the - Design, Budgeting and Approval phase of the Hinze Dam Stage 3 project and **Section 5** for an overview of key issues arising from these activities.

■ **Table 4-1 Community enquires during phase 1 of the project**

Phase 1: Design, Budgeting and Approvals	Engagement channel	Frequency of channel	Enquires received/persons engaged
December – April 2007	Direct Mail	6	350 to 5,500
Includes public comment on the draft ToR and selection of preferred concept design	Draft ToR activities completed during the 20 day comment period	12	11
	House Call	61	70
	Letters	57	57
	Email	32	32
	CAC Public Meetings	5	140
	Meetings (other)	14	120
	Agency Briefings	10	100
	Telephone	29	29
	Phone Surveys to Local Businesses	26	26
	Print advertisements	38	As per media consumption by key stakeholders on day of print advert placement
	Media release and community announcements	4	As per media interest and subsequent media consumption by key stakeholders
April to June 2007 Includes approval of TOC and display of draft EIS	Neighbourhood Briefing	1	15
	Project Update Public Meeting	1	60
	CAC meetings	1	30
	Media release and community announcements	2	As per media interest and subsequent media consumption by key stakeholders
	Draft EIS print advertisements	9	As per media consumption by key stakeholders on day of print advert placement
	Draft EIS public submission activities planned for the 20 day comment period	17	Yet to occur
	Phase 1: Total frequency of channels used	Phase 1: Total persons engaged	
	326	690 (directly) 5,000 (indirectly)	
Phase 2: Construction			
September to late 2010 includes construction (pending approvals) and delivery of stage 3 goals	Yet to occur		
Phase 3: Operational Handover			
Late 2010 - Operational Handover to Gold Coast Water	Yet to occur		

**Percentages and figures correct as at 20 April 2007*

Table 4-2 provides a further breakdown of the 20 community engagement channels used between November 2006 to June 2007 to inform the draft EIS and interested stakeholders about Hinze Dam Stage 3. The table includes the frequency of each channel used, the stakeholder segments targeted and outlines the total person's engaged during Phase One of this project.

■ **Table 4-2 Summary of Community Engagement Channels**

#	Engagement Channel	Frequency of channel	Total Persons Engaged	Stakeholder Segment
1	<p>Community Advisory Committee (CAC) Includes</p> <ul style="list-style-type: none"> ▪ briefing kit ▪ Public notices for each meeting ▪ Meeting minutes uploaded to website ▪ CAC member were invited to Design Workshops listed below in item 2 <p>Refer Table 6 for key dates and topics covered</p>	6	Directly engaged approximately 170 with a flow-on effect of 1,700 indirectly persons engaged through respective community groups	CAC members Local community Greater Gold Coast Community
2	<p>Design Workshops</p> <ul style="list-style-type: none"> ▪ Scoping workshop (10/10/06) ▪ Stakeholder Workshop (11/10/06) ▪ Risk Management Workshop (12/10/07) ▪ Optimisation Foundation Workshop (25/10/07) ▪ Optimisation Initiation Workshop (6/11/06) ▪ Optimisation Shortlisting workshop (6/12/06) ▪ Optimisation Value Management Workshop (10/12/06) ▪ Preferred Option Evaluation Worksop (19/01/07) <p>Final outcome:</p> <ul style="list-style-type: none"> ▪ 48 potential design options ▪ 3 final options proposed ▪ Preferred option endorsed by the community advisory committee 	8	100	CAC members H D A staff
3	Public displays			
	<p>Copies of the Terms of Reference were on public display in eight locations between 26 February to 26 March 2007 at:</p> <ul style="list-style-type: none"> ▪ Palm Beach Library ▪ Mudgeeraba Library ▪ Helensvale Library ▪ Nerang Library ▪ Southport Library ▪ Department of State Development, Gold Coast State Development Centre ▪ GCCC Nerang Administration Centre ▪ GCCC Bundall Administration Centre 	8 locations (20 days)	20	Local community Greater Gold Coast Community
	<p>Copies of the draft Environmental Impact Statement will be on display during June 2007 as per the venues below.</p> <ul style="list-style-type: none"> ▪ EIS Statutory Displays Venue ▪ Gold Coast State Development Centre (SDC), Southport 	11 locations (20 days)	TBC	Local community Greater Gold Coast Community

#	Engagement Channel	Frequency of channel	Total Persons Engaged	Stakeholder Segment
	<ul style="list-style-type: none"> ▪ GCCC Nerang Administration Centre, Nerang ▪ GCCC Bundall Administration Centre, Bundall <p>EIS Library Displays</p> <ul style="list-style-type: none"> ▪ Beenleigh Library ▪ Coolangatta Library ▪ Helensvale Library ▪ Mudgeeraba Library ▪ Nerang Library ▪ Palm Beach Library ▪ Robina Library ▪ Runaway Bay Library ▪ Southport Library 			
4	Staffed library displays			
	<p>1 March 2007 – Terms of Reference Staffed library displays occurred during the draft ToR public comment period at:</p> <ul style="list-style-type: none"> ▪ Nerang Library ; and ▪ Southport Library. 	2 locations	30	CAC members Local community Greater Gold Coast Community
	<p>June 2007 – draft Environmental Impact Statement Staffed library displays will occur during the draft EIS comment period including: Mudgeeraba Library; Nerang Library; Palm Beach Library; and Southport Library.</p>	4 locations	TBC	CAC members Local community Greater Gold Coast Community
5	Community Information Sessions			
	<p>Draft Terms of Reference information sessions were held at:</p> <ul style="list-style-type: none"> ▪ Gold Coast City Council Chambers Bundall (1/03/07); and ▪ Gilston Public Hall, Gilston (10/03/07). 	2 locations	20	Local community Greater Gold Coast Community
	<p>Draft EIS information session is scheduled for mid June at the Advance Town Hotel Motel, Advancetown.</p>	1 location	Yet to occur	Local community Greater Gold Coast Community
6	Public meetings			
	<p>Advance Town Hotel Motel Meeting (25/04/07). Discussion topics included:</p> <ul style="list-style-type: none"> ▪ Hinze Dam Project update ▪ Impacts of construction ▪ Traffic management ▪ Environmental update ▪ Recreation update 	1 location	60	Local community
	<p>Gilston Road/Advancetown Road/ Duncan Road Neighbourhood briefing</p>	1	15	Local community
7	Other meetings			
	<p>Gilston Rural Fire Brigade (26 April 2007)</p>	1	15	Emergency Services
	<p>Gilston State Primary School (13 April 2007)</p>	1	N/A	School Community
	<p>Numinbah Valley Residents Committee</p>	2	30	Local community

#	Engagement Channel	Frequency of channel	Total Persons Engaged	Stakeholder Segment
	(16 April 2007, 24 April 2007)			
	GCCC Councillor Hinze Dam Site Visit and presentation at GCCC Nerang Administration Centre (16 April 2007). Provided current information on: <ul style="list-style-type: none"> ▪ Geotechnical Investigations; ▪ Environmental Investigations; ▪ Recreational Studies; ▪ Hydraulic Studies; and ▪ Community Consultation. 	1	8	CAC H D A Staff GCCC Councillors Interested parties
	Face-to-face meetings with during March 2007: <ul style="list-style-type: none"> ▪ Gold Coast Mountain Bike Club ▪ Workforce International (regarding road closures and bike path closures) ▪ Rotary (Nerang) Fishing ▪ Blue Fin Fishing Classic ▪ Rowing Queensland ▪ Cedar Lake Equestrian Centre ▪ Synergy Applied Adventure ▪ Sports Tuition ▪ Nerang State High School 	9	50	Organised groups
8	House Calls (January 2007 – onwards) Direct mail sent regarding house calls to 350+ local residents Liaised with local residents about their level of support for the project and key concerns	61 (ongoing)	70	Local community
9	Direct Mail Direct mail drops dispatched to include: Project update (22/01/07) Project update and invitation to register interest for a house call (22/01/07) Letters of invitation to participate in the CAC (date) Project Update Community Flyer (date) Road Closure (date) Invitation to community meeting and road closure (date)	6	350 to 5,5000 per direct mail drop	Upstream and downstream communities
10	Print Advertisements A total of 38 print advertisements have been Placed in the key publications outlined below since November 2006 to April 2007. Key publications include: <ul style="list-style-type: none"> ▪ <i>The Gold Coast Sun</i> (Upper North, North, Central and South Editions) ▪ <i>The Gold Coast Bulletin</i> ▪ <i>Albert & Logan News</i> ▪ <i>The Courier-Mail</i> (ToR, EIS, CHMP adverts only) ▪ <i>The Weekend Australian</i> (ToR and EIS adverts only) Public notices: <ul style="list-style-type: none"> ▪ Road Closures (x13) ▪ Community Advisory Committee Meetings (x7) ▪ Terms of Reference (x5) ▪ Environmental Impact Statement (x5) ▪ Community Meeting (x2) ▪ Cultural Heritage Management Plan (x2) 	38	As per media consumption by key stakeholders on day of print advert placement	Level 1 & 2 Stakeholders Local Schools Wider Gold Coast Community

#	Engagement Channel	Frequency of channel	Total Persons Engaged	Stakeholder Segment
	<ul style="list-style-type: none"> ▪ Project updates (x4) (Refer to Attachment A for examples)			
11	Media releases and community announcements <ul style="list-style-type: none"> ▪ CAC committee members declared (Nov 2006) ▪ Preferred Spillway Design (endorsed by the CAC and GCCC) (January 2007) ▪ Terms of Reference Information Session (10 March 2007) ▪ Announcement of the Total Outturn Cost (TOC) of the Project (May 2007) ▪ Project update (geotechnical investigations, environmental studies, draft EIS and TOC (May/June 2007) 	5	As per media interest and subsequent media consumption by key stakeholders	Wider Gold Coast Community
12	Telephone surveys to local businesses	26	26	Local businesses
13	Dedicated website (includes project alerts and updates via www.goldcoast.qld.gov.au)	Ongoing	N/A	Wider Gold Coast Community and SEQ
14	Project briefings <ul style="list-style-type: none"> ▪ Department of Main Roads ▪ Queensland Transport ▪ Queensland Water Commission ▪ Environmental Protection Agency ▪ Queensland Health ▪ Department of Natural Resources and Water ▪ Department of Environment and Water Resources ▪ Department of Primary Industries and Fisheries, ▪ Department of State Development ▪ Department of Emergency Services 	Ongoing	N/A	Agencies
15	Hinze Dam On-site Community Liaison officer one-on-one meetings with stakeholders On-site posters and a-frame signage near road closures Liaison with Alliance experts on environmental studies (flora & fauna surveyors, noise, hydrology, geotechnical surveys, recreational planners)	Ongoing	170+	Local community Internal and external stakeholders
16	Road Signage <ul style="list-style-type: none"> ▪ Project Update near entrance to upper Gilston Road (x1) ▪ Project update at the end of Advancetown Road (x1) ▪ Road closure near dam crest wall (x4) 	6	As per public acknowledgment	Local community
17	Project Posters Hinze Dam Alliance & Overall Stage 3 project Water for the future Have your say Recreation (pre, during, after construction) Key features of a dam Design options Adopted Design (PS1a) Managing Construction Environment	13	N/A	Internal and External community

#	Engagement Channel	Frequency of channel	Total Persons Engaged	Stakeholder Segment
	Short-listed option (AS9) Shot-listed option (PS1)			
18	1800 Calls via Gold Coast Water	Ongoing	29 to date	External stakeholders
19	Emails	32	32	Internal and external stakeholders
20	Letters Includes response to Cultural Heritage Management Plan call for endorsed Aboriginal Parties	57	57	Internal and external stakeholders

The community engagement channels outlined in **Table 4-2** provided a platform for feedback on a range of issues. This feedback enabled the project team to understand the communities' top four areas of concern relating to:

- construction impacts;
- recreation and access;
- environmental management; and
- community and lifestyle.

A breakdown of all issues raised by frequency and percentage is provided in **Attachment C** of this report.

Section 5 of this report provides an overview of the key issues raised during consultation between November 2006 to late April 2007 with proposed mitigation measures for each area of concern (refer to **Section 19** for more detailed mitigation strategies).

5. Consultation Issues & Outcomes

This section provides an overview of key issues and benefits raised during consultation for the draft EIS. All comments were generated as a direct result of community engagement activity conducted between key stakeholders and the Hinze Dam Alliance project team.

Key project benefits raised by community members included:

- timely flood mitigation for downstream properties;
- dam safety improvements to meet Australian standards; and
- increased water storage capacity for the Gold Coast Community.

Since the commencement of community consultation during November 2006, the Hinze Dam Alliance has implemented 20 communication channels with approximately 690 stakeholders directly engaged and over 350 to 5,000 residents in the immediate Hinze Dam area indirectly engaged.

Approximately 170 interested stakeholders were directly engaged through six Community Advisory Meetings. The CAC meetings also enabled a flow-on effect of an additional 1,700 persons indirectly engaged through respective community groups.

Community engagement activities highlighted four key areas were raised including:

- 1) Construction impacts;
- 2) Environmental management;
- 3) Recreation areas (relocation and disruption of use); and
- 4) Community lifestyle and ongoing consultation.

Refer **Figure 5-1** and **Table 5-3** for a breakdown of issues and proposed mitigation measures. The key issues outlined in **Table 7** were assessed according to:

Tier 1 stakeholders:

- directly and indirectly impacted stakeholder groups (including communality residents within 1 km of the construction exclusion zone, outer community residents within 1-2km, surrounding suburbs, users of Hinze Dam recreational facilities, local business,); and

Tier 2 Broader Gold Coast, Regional and State-wide Community:

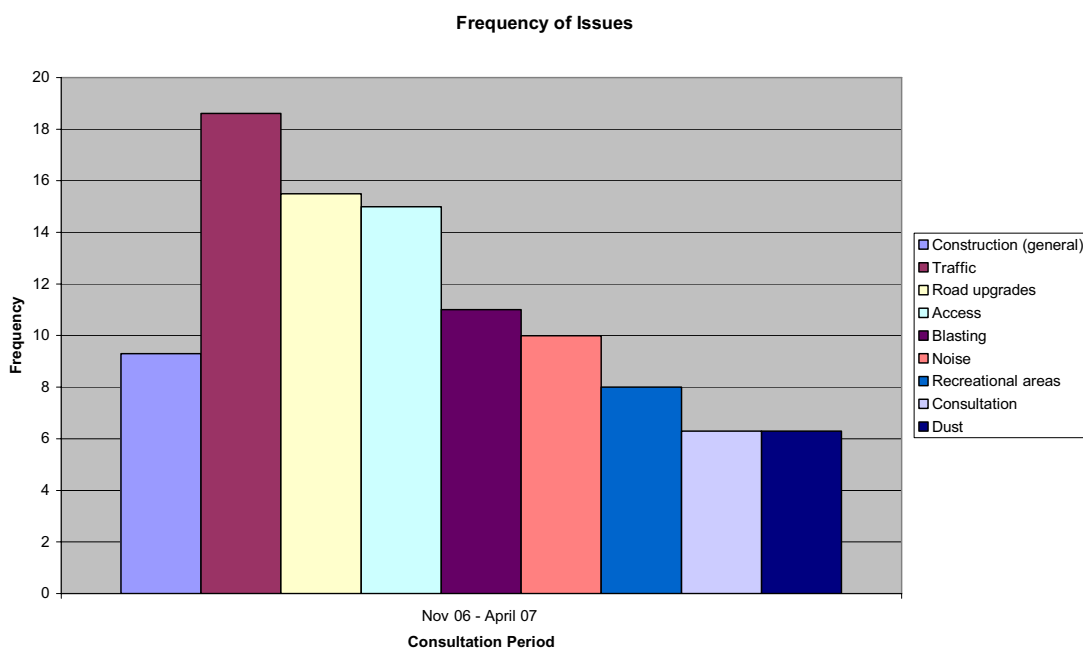
- all other stakeholders including environmental groups and State and local government departments).

5.1 Key Consultation Issues and Outcomes

Key issues were raised during consultation activities undertaken between November 2006 to April 2007 (please refer **Attachment C**).

Figure 5-1 outlines the frequency of each issue. **Table 7** breakdowns priority issues for stakeholders including general construction impacts such as traffic, access and blasting and recreational planning and future consultation.

■ Figure 5-1 Frequencies of Issues



Further details on key issues raised by the community are provided in **Attachment C**. The draft Management Overview Strategy (**Section 19**) also proposes key mitigation strategies in response to key issues.

Section 5.2 details eight key resolutions from the publicly attended Community Advisory Meetings.

5.2 Community Advisory Committee

A Community Advisory Committee (CAC) was established to provide a representative forum considering aspects of the Hinze Dam Stage 3 (HDS3) project that are of interest to the community.

The role of the Committee is to facilitate effective and appropriate community and stakeholder input into the Hinze Dam Stage 3 project, and to provide recommendations to Council on technical and policy issues related to the project, as required. The CAC is bound by its own Terms of Reference as outlined in **Attachment B**.

The Committee has examined issues such as:

- accounting for climate change in planning for the dam upgrade;
- spillway design;

- traffic and road networks;
- recreational facilities at the dam;
- environmental impacts of the project; and
- the community consultation process.

■ **Figure 5-2 Community Advisory Committee at Gold Coast City Council Offices**



Community Advisory Committee meetings have been a regular consultation activity since November 2007 (refer **Table 5-1**).

■ **Table 5-1 Schedule of Community Advisory Meetings**

CAC Meeting	Date	Topics covered
Meeting 1	12/11/06	Scope and brief of Advisory Committee
Meeting 2	29/11/06	Spillway design concepts Recreational planning
Meeting 3	16/01/07	Proposed spillway design Recreational planning
Meeting 4	30/01/07	Project progress report Recreational continuance plan Recreational master plan (post-construction)
Meeting 5	8/03/07	proposed recreational facilities and design and post construction road network
Meeting 6	4/6/07	Draft EIS, recreation planning, access road updates, compensatory habitat strategy, communications , cultural heritage

Table 5-2 summarises a number of the key issues considered by the CAC and resolutions as a committee to support Alliance decisions and recommendations.

Mitigation measures addressing the communities' key areas of concern are outlined in **Table 5-3** of this report. Refer to **Section 19** of the draft EIS for relevant Construction Environmental Management Plans.

■ **Table 5-2 Resolutions of the Community Advisory Committee**

Issue	Resolution	Date
Objective of project	Committee fully supportive of raising the wall for flood mitigation and water supply.	29/11/06
Spillway design option	Committee supports the presentation and the further investigation of the two options (PS1 and AS9) as presented by the Committee.	12/12/06
Recommended Spillway design option	Committee supports the adoption of PS1A and recommends Council adopts it as the preferred option.	16/01/07
EIS Draft Terms of Reference	Committee prepare submission in response to the Draft Terms of Reference.	30/01/07
Closure of the dam	Pending approval of the Target Outturn Cost of the project and the draft, committee members support the closure of the dam wall and the immediate surrounds during construction.	30/01/07
Recreational continuance plan	The Committee supports the Alliance in not investing in a short-term solution for a recreational park for use during construction (excluding boat ramps and viewing platform).	30/01/07
Post-construction continuance plan	The Committee supports the: <ul style="list-style-type: none"> ▪ overall proposed concept for the Lakeside Park located on the left abutment of the crest wall; ▪ concept of an interpretive centre; ▪ reinstatement of a kiosk in the area; ▪ general concept for the downstream park; and ▪ upgrade of the western and eastern upper boat ramps prior to the commencement of construction 	8/03/07
Heritage	Committee supports the relocation of historical grave site belonging to early settlers to a new park area to be constructed as part of the upgrade of the western boat ramp.	8/03/07

■ **Table 5-3 Summary of all key issues and proposed mitigation strategies (Key impacts as at 20 April 2007)**

Issue Type	Consultation Issue summary	Summary of proposed mitigation measures (Refer Section 19 of draft EIS for more detail)
<p>Construction impacts</p>	<p>Issues associated with construction impacts relate to:</p> <ul style="list-style-type: none"> • road closure and access, noise, blasting, dust, quarry operations, heavy vehicle movements • construction traffic (e.g. impacts on local roads, volume of traffic generated as a result of construction and effective integration with existing road networks) • likelihood of local road and bridge upgrades following construction. 	<ul style="list-style-type: none"> ▪ Construction management plan ▪ Ongoing community consultation <p>Soil and erosion</p> <ul style="list-style-type: none"> ▪ erosion controls and sedimentation traps ▪ scheduled clearing outside summer months when storms are potentially more prevalent <p>Dust and noise</p> <ul style="list-style-type: none"> ▪ construction dust management plans with physical containment measures (where feasible) and dust suppression methods (for example water trucks) ▪ dust monitoring prior to and during construction ▪ restricting work practices to construction exclusion zones ▪ prompt rehabilitation of construction areas to mitigate again dust, soil and sedimentation <p>Vibration</p> <ul style="list-style-type: none"> ▪ vibration monitoring during each blast to monitor peak particle velocity ▪ blasting will occur within strict controls to limit vibration ▪ structural surveys to assess and record pre-blast conditions of properties within 1 km of blasting activity (this will also be available for properties and businesses outside the 1 km radius) <p>Vehicle management plan and other mitigation measures including:</p> <ul style="list-style-type: none"> ▪ oversized vehicular movement control and monitoring ▪ scrapers, excavators and trucks will be mobilised to site for quarrying during September 2007 prior to 2008 construction activity ▪ construction of suitable heavy vehicle access roads for trucks and excavators <p>Traffic</p> <ul style="list-style-type: none"> ▪ a traffic management plan will be developed to manage traffic during and after construction ▪ the majority of truck movement will be contained within the construction zone itself ▪ the majority of material required for stage 3 will be extracted within the Community Infrastructure Designation Zone (CID) ▪ construction workers will be encouraged to Park n' Ride and take advantage of the daily shuttle that will limit the amount of traffic on local roads ▪ sufficient on-site parking will be provided to avoid roadside parking in the local area ▪ traffic movement can occur within the hours of 6.30am and 6.30 pm Monday to Saturday ▪ road signage will be provided ▪ ongoing communication will occur between local residents, recreational groups and interested stakeholders

Issue Type	Consultation Issue summary	Summary of proposed mitigation measures (Refer Section 19 of draft EIS for more detail)
Environmental Management	<p>Issues associated with environmental impacts relate to:</p> <ul style="list-style-type: none"> • tree clearing and disposal methods • geotechnical investigations • clay removal and acquisition • compensatory habitat • impacts on existing flora and fauna 	<p>Environmental management:</p> <ul style="list-style-type: none"> • construction scheduled in sensitive areas first to enable prompt rehabilitation where feasible • conducted in accordance with legislated Environmental requirements • Ongoing community consultation.
Recreation areas including facility relocation and recreational pursuit disruptions	<p>Recreation issues for key stakeholders relate to:</p> <ul style="list-style-type: none"> • access to existing public park spaces • future planning and compensatory parklands (facility relocation) • construction exclusion zones and impact on land and water based activities (prior to and after construction) 	<p>Recreation and access:</p> <ul style="list-style-type: none"> • alternative recreation areas are proposed (to include the Lakeside Park on the left abutment of the crest wall in the area) • upgrades to the western and eastern upper boat ramps will occur prior to construction • an interpretive centre concept, downstream park and reinstatement of a kiosk is proposed for review by the Community Advisory Committee • Ongoing community consultation
Community and lifestyle including the need for ongoing consultation and communication during and after construction	<p>Recreation issues for key stakeholders relate to:</p> <ul style="list-style-type: none"> • property impacts including view obstruction • property values throughout life of project • social impacts on neighbouring properties within 1km of construction exclusion zone 	<p>Ongoing consultation will continue throughout the Hinze Dam project until its expected completion in late 2010. Consultation will include:</p> <ul style="list-style-type: none"> • a draft EIS Consultation • consultation on recreational access and facilities • a four-year Communication and Consultation Strategy. <p>The implementation of the four-year Communication and Consultation Strategy will provide timely information to stakeholders to mitigate potential impacts. Regular construction updates are required throughout the project (2008-2010), with communication on blasting and construction schedules taking priority during relevant periods.</p> <p>Following construction, effective promotion of the re-opening of Hinze Dam is also proposed.</p>

5.3 Draft EIS consultation

The community will be provided with the opportunity to review and make submissions on the draft EIS during the statutory comment period during June 2007.

In addition to the opportunities to make submissions through the Coordinator General's Office the Alliance will further engage the community in the EIS consultation process via:

- statutory displays in 12 locations;
- four staffed library displays; and
- one community information session.

To support this process, the Alliance will place advertisements in the major newspapers and provide copies of the draft EIS on the Hinze Dam Stage 3 website for interested parties to download.

5.4 Communication and Consultation Strategy

To provide for ongoing community consultation a four-year Communication and Consultation Strategy has been developed and is summarised below.

5.4.1 Aim

The aim of the communication strategy is to ensure that interested and affected stakeholders are provided with adequate, appropriate and timely information on the project, including anticipated impacts, benefits and timing.

5.4.2 Objectives

The key objectives of the strategy are to:

- 1) create awareness of Hinze Dam Stage 3 and an understanding of why it is needed;
- 2) ensure timely community engagement processes support the projects overarching objectives and decision-making processes while highlighting the need for flood mitigation and additional storage capacity;
- 3) provide information and assistance that minimises inconvenience to community members and other stakeholders during construction and future operation of the facility;
- 4) ensure community concerns or views are understood by the Alliance and considered by engaging the community in any future decision making aspects of the project; and
- 5) evaluate the community engagement processes used in this project to ensure continuous process improvement and enhancement of the strategy.

5.4.3 Communication Programs

The communication strategy is organised into separate programs as outlined in **Table 5-4**.

■ **Table 5-4 Communication Programs**

Communication Program	Deliverables
1. Community Consultation Program	<ul style="list-style-type: none"> ▪ Community Advisory Committee meetings ▪ Public Information Sessions (ToR and draft EIS) ▪ Project/Construction Information Sessions ▪ Face-to-Face meetings with residents ▪ On-site community liaison officer ▪ Direct mail ▪ Newsletters and fact sheets
2. Public Awareness and Education Program	<ul style="list-style-type: none"> ▪ A series of consultation presentations to Gold Coast business and community networks and their members
3. Schools Program	<ul style="list-style-type: none"> ▪ A Safety Awareness program ▪ Resource material
4. E-Communication Program	<ul style="list-style-type: none"> ▪ Regular updates on Hinze Dam Stage 3 website ▪ SMS notifications ▪ E-newsletters ▪ Email notifications and invitations
5. Media/Advertising Program	<ul style="list-style-type: none"> ▪ Media backgrounders and releases ▪ Advertisements, advertorials and editorials
6. Construction Communication Program	<ul style="list-style-type: none"> ▪ On-site Community Liaison Officer ▪ Print advertisements ▪ Website updates ▪ Heavy Vehicle Management Plan ▪ Database of mobile phone numbers and email addresses ▪ SMS notifications ▪ Road signage ▪ 1800 number via GCW Customer Centre ▪ Newsletters
7. Data Analysis Program	<ul style="list-style-type: none"> ▪ Survey questionnaires ▪ Face-to-face meetings and/or focus groups ▪ Data analysis and reports ▪ Recommendations

6. Conclusion

The Hinze Dam Stage 3 project presents direct impacts on local residents, businesses and community groups living in and around the Hinze Dam area as well as indirect impacts on other residents, businesses and community groups who use the dam for specific activities.

The Hinze Dam Alliance conducted a comprehensive community consultation process that engaged both the Hinze Dam community and the broader Gold Coast community.

6.1 Identification of Key Stakeholders (Needs and Values)

Both qualitative and quantitative research was conducted to identify and segment stakeholders including:

- historical analysis of the impacts associated with Hinze Dam Stage 1 and Stage 2 projects;
- qualitative assessment of potential political, social and economic impacts associated with Stage 3;
- quantitative assessment of key issues raised, their frequency and demographic spread; and
- development of relevant stakeholder segments by geography, values and opinions.

The Alliance identified key stakeholders, their needs and values by developing an understanding of key project issues and the likely impacts for each stakeholder. Once these issues and impacts were identified stakeholders were segmented, or grouped, accordingly. Further analysis was conducted to identify the needs and values of each particular stakeholder segment. This involved primary research where representatives of these stakeholder groups were consulted directly. Secondary research was conducted by Gold Coast City Council (GCCC) and Gold Coast Water (GCW) through the Nerang Flood Mitigation Committee.

6.2 Facilitation of Community Involvement

The facilitation of community involvement was achieved through a number of mechanisms. Primarily this was achieved by the establishment of the Hinze Dam Community Advisory Committee (CAC), an on-site Community Liaison Officer, street meeting, a series of one-on-one meetings and public meetings, information sessions, staffed library displays and static displays. These mechanisms were supported by a series of direct mail-outs, advertisements, word-of-mouth promotion, the Hinze Dam website and Gold Coast Water's Contact Centre.

6.3 Enhance Community Awareness and Understanding

Enhanced community awareness and understanding was achieved through proactive consultation and honest and transparent communication. Meetings with the CAC were held once per month with its members informed and updated on all aspects of the project as it progressed since its commencement in October 2006.

Further, stakeholders from all segments were actively engaged and consulted on issues such as environment, recreation, traffic management and construction impacts. In many cases, senior Alliance members and officers of the GCCC met with individual stakeholders or organisations to address specific issues that were raised.

6.4 Community Input on Key Issues and Mitigation Strategies

The community was invited to provide input on a number of key issues. The primary channel for this input was achieved through the CAC, whose members represented a cross-section of the Gold Coast Community. Other channels included meetings with particular representative groups including Gold

Coast City Councillors, environmental, recreational and community groups, emergency services and other interested parties.

As a result of this process, the Alliance and the relevant stakeholders were able to work together collaboratively to develop mutually beneficial solutions and mitigation strategies to address many of the impacts and issues arising out of this project.

6.5 Feedback on the Preferred Design

An important part of the preferred design adoption was endorsement by the CAC prior to Council approval. While this was primarily an engineering issue, to facilitate this process the CAC was invited to attend the series of design workshops to provide a community perspective on the spillway design options.

Involving the CAC in the design process ensured an open and transparent consultation process.

6.6 Provision of Information on the Outcomes of Studies

A number of studies conducted during the EIS process revealed a number of issues that may have been of particular interest to stakeholders. The outcomes of these studies were communicated to the community through the CAC and other key stakeholder meetings.

6.7 Ongoing Communication and Community Consultation

A key issue identified as result of the community consultation process to date is the need for ongoing community consultation during the construction phase. The challenge arising out of this issue is to provide timely information to stakeholders to mitigate potential impacts and advise them of the significant investment being made by GCCC to improve the dam in terms of:

- Prioritised flood mitigation;
- Time efficient solutions and outcomes;
- Efficient optimization of project scope and cost;
- Sustainable water resource and impact management; and
- Enhanced outcomes for the community and stakeholders.

Issues identified will be addressed by implementation of the four-year Communication and Consultation Strategy described in **Section 5.4.3**.

**Attachment A Hinze Dam Alliance Print
Adverts**

Hinze Dam Stage 3:

Working together for water solutions

As widespread drought continues, pressure on water supply continues to increase.

Gold Coast City Council has engaged a consortium of private sector partners in an alliance to raise the height of the Hinze Dam wall from 93.5 metres to 108.5 metres (above sea level).

Part of Gold Coast City Council's Waterfuture Strategy (2006 - 2016) the Hinze Dam Stage 3 project will:

- Increase our water supply from Hinze Dam to 225 million litres per day
- Reduce flooding in the lower Nerang River catchment
- Ensure the Dam complies with current safety standards and guidelines

The Hinze Dam Alliance is progressing extensive on-site geotechnical investigations, dam designs and an Environmental Impact Statement (EIS). The EIS will be available for public comment between late May 2007 and June 2007. Pending the Coordinator General's approval of the EIS and Council's approval of the overall project costs, the Alliance will continue with detailed dam design and begin construction before January 2008. The Stage 3 project will be completed by December 2010.

Want more information?

Community feedback on Stage 3 is valued by the Alliance. Please come along to one of our community information sessions to learn more about the project.

RSVP to Ms Zoe Ford on (07) 5581 7764 by Monday 23 April 2007.

Community Information Session

Thursday 26 April 2007 6:30pm - 8:30pm

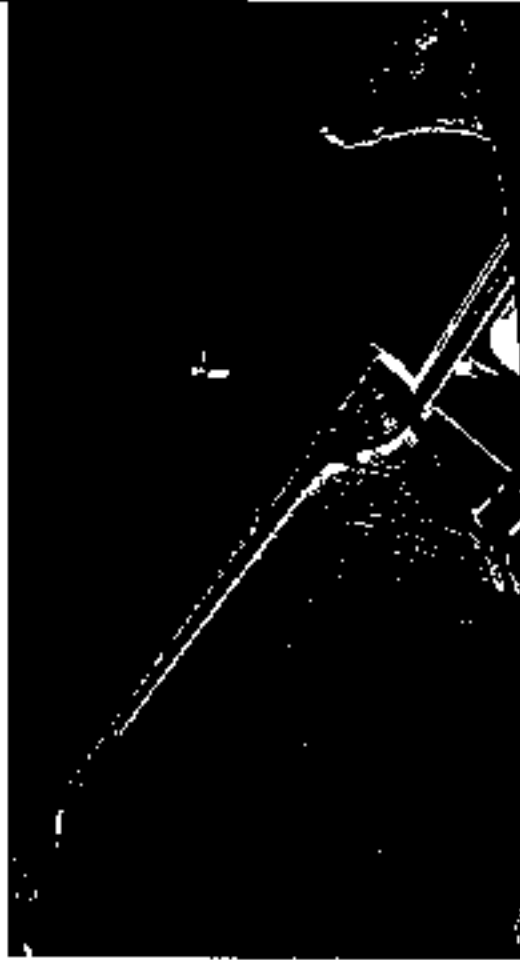
Advancetown Hotel Motel

Nerang Murwillumbah Road Advancetown

Phone: 1300 366 692

Email: hok3@goldcoast.qld.gov.au

Web: goldcoast.qld.gov.au/hinzedamstage3



Hinze Dam Stage 3:

Draft Terms of Reference now available for public comment

Your feedback on Stage 3 is important to us as we aim to ensure the safest possible solutions are designed and built to improve flood management, water storage and dam safety for the Gold Coast community.

It is expected Hinze Dam Stage 3 will involve raising the dam wall and water intake towers by approximately 15 metres, extending the saddle dam up to the new dam wall, height and re-establishing recreation areas and road infrastructure within the immediate area.

The Hinze Dam Alliance, comprising the Gold Coast City Council, Thross Pty Ltd, Snelter Knight Merz Pty Ltd and URS Pty Ltd are currently working together to further develop the project.

An important part of the project delivery involves the development of an Environmental Impact Statement (EIS) to investigate likely impacts and subsequent management strategies for the project.

Community feedback is encouraged on the draft Terms of Reference (ToR) for the EIS during February and March 2007. The draft ToR, issued by the Queensland Coordinator-General Department of Infrastructure, will guide how the EIS process will be undertaken and the key environmental, social and economic matters to be addressed.

Public comment on the Draft EIS will be invited during late May to June 2007.

Come along to one of the informative activities listed below to learn more about the project and speak with team members from the Hinze Dam Alliance.

Community Information Sessions

Thursday 1 March 2007	4pm - 7pm	Gold Coast City Council Chambers Building	135 Burnall Street, Burnall
Saturday 10 March 2007	9am - 12pm	Gilston Public Hall	459 Gilston Road, Gilston

Staffed Library Displays

Thursday 1 March 2007	11am - 1pm	Hearing Library	Corner White and Pick Streets, Nerang
Thursday 1 March 2007	11am - 1pm	Southport Library	Corner Gardner and Lawson Streets, Southport

In addition to the above activities, copies of the draft ToR for the draft EIS can be viewed at the Department of State Development at the Gold Coast (Southport), Gold Coast City Council Nerang and Bundall Administration Centres and public libraries of Palm Beach, Southport, Mudgeraba, Nerang and Healyvale between 26 February to 26 March 2007.

Copies of the draft ToR can be downloaded via infrastructure.qld.gov.au/goldcoast/qld.gov.au/infrastructure/stage3

For more information:

Phone: 1300 366 692

Email: info3@goldcoast.qld.gov.au

Or Contact the Coordinator-General's office

Phone: 3810 946 829

Email: info@infrastructure.qld.gov.au



Gold Coast City Council

Public Notice - Cultural Heritage Management Plan

Attention Aboriginal Party's For Hinze Dam - Advancetown Lake Area

The Gold Coast City Council, as the sponsor of a proposed cultural heritage management plan, gives notice of its intention to develop a plan for the Hinze Dam Stage 3 project.

The project is located approximately 15 kilometres southwest of Nerang on the Merang River. The dam wall is located on the corner of Advancetown Road and Spillway Road, Griston. Hinze Dam Stage 1 was completed in 1979, and upgraded to Stage 2 in 1989. The Dam has a storage capacity of 163, 070 million litres and surface area of 9.77 square kilometres.

The Hinze Dam Stage 3 project involves raising the existing dam wall by 15 metres and will include:

- upgrades to the embankment, spillway and intake towers;
- establishment of site offices, storage, stockpiles and lay down areas;
- establishment and operation of quarry activities to provide construction materials;
- establishment of construction roads;
- clearing of vegetation in inundation areas and for establishment of quarries; and
- upgrading and re-ooling of ancillary services and structures including parks, car parks, recreational facilities, roads and bridges (including sections of the Merang-Murwillumbah Road and Gold Coast-Stringybark Road).

The raising of the dam wall will inundate or partially inundate a further 500 hectares of land adjacent to the current full supply levels.

Any Aboriginal Party with an interest in the Hinze Dam - Advancetown area must give written notice to the sponsor if they wish to take part in developing the plan. The party's name and contact address must be included.

The written notice must be sent to the sponsor by **Tuesday 17 April 2007** (being 30 days after the Notice Day).

The sponsor may elect not to endorse any Aboriginal Party if the sponsor has not been advised in writing within the required timeframe.

Plans of the proposed impact area and the draft Terms of Reference for the Environmental Impact Statement will also be available.

All correspondence must be sent in writing to:

Gold Coast City Council
Attn: Hinze Dam Alliance
Project Manager
Cultural Heritage Management Plan
P.O. Box 1522
Milton 4064

For more information, contact:

Bruce Wilcoxon
Ph: 1300 366 692
Email: hd33@goldcoast.qld.gov.au

Copies of the draft Terms of Reference can be downloaded via infrastructure.qld.gov.au or goldcoast.qld.gov.au/hinzedamstage3



Public Notice

Hinze Dam Stage 3 Community Advisory Committee.

The Gold Coast Community are invited to attend the sixth Hinze Dam Stage 3 Community Advisory Committee meeting to be held Wednesday, 16 May 2007.

The Hinze Dam Stage 3 project is a key element of the Gold Coast Water Future Strategy that is a blueprint for the sustainable management of the Gold Coast's water supply. The dam upgrade will ensure that the future needs of the region's growing population are met and also reduce the risk of downstream flooding.

When: 5:30 pm to 8:00 pm

Where: Committee Meeting Room G6 at Council's Nerang Administration Centre, Nerang Smithson Road

RSVP: Ph 5581 7754

For more information contact Gold Coast Water, telephone: 1300 366 692
goldcoastcity.com.au/hinzedamstage3



PUBLIC NOTICE

Hinze Dam Stage 3 Community Advisory Committee

Members of the Gold Coast Community are invited to attend the first Hinze Dam Stage 3 Community Advisory Committee meeting to be held Wednesday, 29 November 2006

The Hinze Dam Stage 3 project is a key element of the Gold Coast Waterfuture strategy that is a blueprint for the sustainable management of the Gold Coast's water supply to ensure that the future needs of the region's growing population are met. The dam upgrade will also reduce the risk of downstream flooding.

When: 5:30 pm to 8:00 pm

Where: Committee Meeting Room G6 at Council's Regional Administration Centre, Springwood, Southport Road

For more information contact:

Gold Coast Water, telephone: 1300 366 692

www.goldcoastcity.com.au/hinzedamstage3



Gold Coast City Council

PUBLIC NOTICE

Hinze Dam Stage 3 Community Advisory Committee

Members of the Gold Coast Community are invited to attend the second Hinze Dam Stage 3 Community Advisory Committee meeting to be held Tuesday, 12 December 2006.

The Hinze Dam Stage 3 project is a key element of the Gold Coast Water Future Strategy that is a blueprint for the sustainable management of the Gold Coast's water supply. The dam upgrade will ensure that the future needs of the region's growing population are met and also reduce the risk of downstream flooding.

When: 5:30 am to 8:00 pm

Where: Committee Meeting Room G6 at Courthouse
Administration Centre, Helang, Southport Road

RSVP: Ph: 5581 7754

For more information contact:
Gold Coast Water, telephone: 1300 366 892
www.goldcoastcity.com.au/hinzedamstage3



Gold Coast City Council

PUBLIC NOTICE

Hinze Dam Stage 3 Community Advisory Committee

Members of the Gold Coast Community are invited to attend the third Hinze Dam Stage 3 Community Advisory Committee meeting to be held Tuesday, 16 January 2007.

The Hinze Dam Stage 3 project is a key element of the Gold Coast Waterfuture Strategy that is a blueprint for the sustainable management of the Gold Coast's water supply. The dam upgrade will ensure that the future needs of the region's growing population are met and also reduce the risk of downstream flooding.

When: 5:30 pm to 8:00 pm

Where: Committee Meeting Room (66A) Council's Nerang
Administration Centre, Nerang Southport Road

RSVP: Ph: 3581 7754

For more information contact:
Gold Coast Water, telephone: 1300 366 692
www.goldcoastirrig.com.au/hinzedamstage3



Gold Coast City Council

Public Notice

Hinze Dam Stage 3 Community Advisory Committee
Members of the Gold Coast Community are invited to attend the fourth Hinze Dam Stage 3 Community Advisory Committee meeting to be held **Tuesday, 30 January 2007**.

The Hinze Dam Stage 3 project is a key element of the Gold Coast Waterfuture Strategy that is a blueprint for the sustainable management of the Gold Coast's water supply. The dam upgrade will ensure that the future needs of the region's growing population are met and also reduce the risk of downstream flooding.

When: 5:30 pm to 8:30 pm

Where: Committee Meeting Room G6 at Council's Herong Administration Centre, Herong Southport Road

RSVP: Ph. 5581 7754

For more information contact:

Gold Coast Water, telephone: 1300 356 692

www.goldcoastcity.com.au/hinzedamstage3

Public Notice

Hinze Dam Stage 3 Community Advisory Committee.

The Gold Coast Community are invited to attend the fifth Hinze Dam Stage 3 Community Advisory Committee meeting to be held Thursday, 8 March 2007.

The Hinze Dam Stage 3 project is a key element of the Gold Coast Waterfuture Strategy that is a blueprint for the sustainable management of the Gold Coast's water supply. The dam upgrade will ensure that the future needs of the region's growing population are met and also reduce the risk of downstream flooding.

When: 5.30 pm to 8.00 pm

Where: Committee Meeting Room G5 at Council's Nerang Administration Centre, Nerang Southport Road

RSVP: Ph: 5591 7754

For more information contact:

Gold Coast Water, Telephone: 1300 366 692

goldcoast.qld.gov.au/hinzedamstage3

Changed Traffic Conditions

Hinze Dam

Spillway Road across the dam wall

The access road across the dam wall may have some restrictions from Monday 2 April until Friday 13 April 2007 for Geotechnical Investigations (testing ground density and soil content).

If required, there are two alternative routes to access Hinze Dam; from the east via Gision Road or from the west via Advancetown Road.

The Damassy Cafe will still be operating during this period.

Please expect changes to local traffic access while geotechnical investigations continue around Hinze Dam.

For more information and regular updates on Hinze Dam Stage 3 please refer to goldcoastcity.com.au/hinzedamstage3 or call 1300 365 692

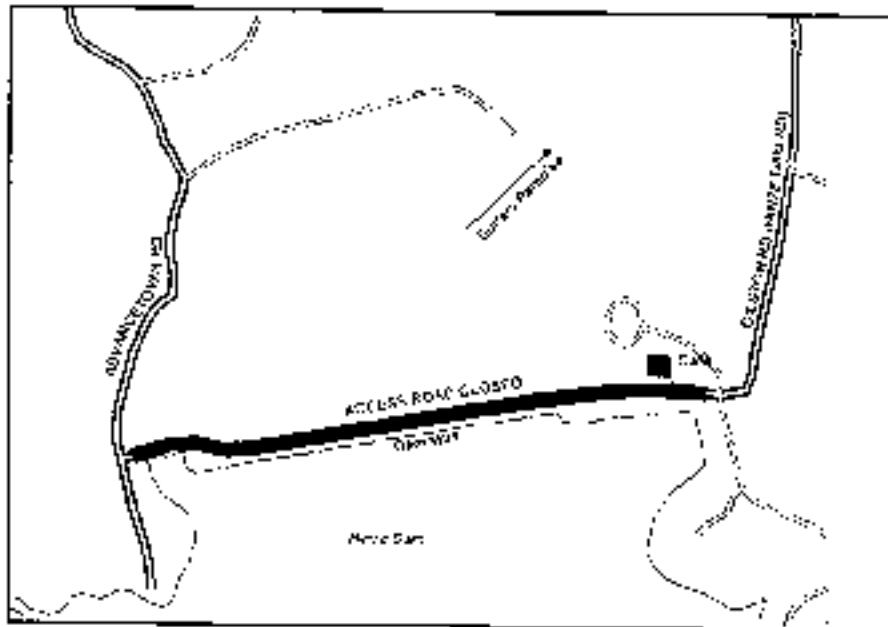
Road Closure

Residents and recreational users are reminded that as part of the Hinze Dam Stage 3 Geotechnical Studies, the access road across the dam wall will continue to be limited to one lane until Friday 19 January 2007. From Saturday 20 January 2007 this access road will then be closed to all traffic for approximately three weeks.

The Dam Tasty Cafe will still be accessible via Gilston Road.

The access road across the dam will be re-opened for the Australia Day Long Weekend from Friday 26 January 2007 until Sunday 28 January 2007.

There are alternative routes to access Hinze Dam; from the east via Gilston Road or from the west via Advancetown Road.



The Hinze Dam Stage 3 Upgrade is a key element of the Gold Coast Water Future Strategy and vital for flood mitigation and the sustainable management of the Gold Coast's water supply ensuring the future needs of the region's growing population are met.

For more information and regular updates on Hinze Dam Stage 3 please refer to www.goldcoast.qld.gov.au/hinzedamstage3

Public Notice

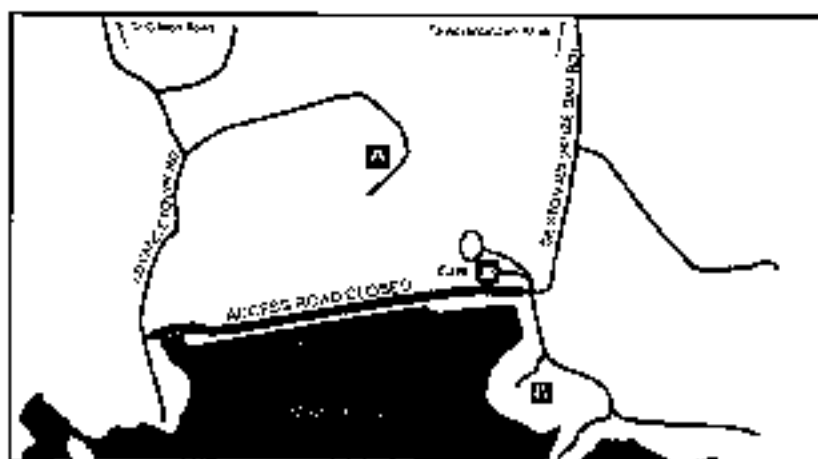
Road Across Hinze Dam Closed

The access road across the dam wall will continue to be closed to all traffic until Friday 23 February 2007. Ongoing geotechnical investigations are being conducted to gather information on ground density and soil content.

Please note the road will be open to traffic on the weekends during this period.

There are two alternative routes to access Hinze Dam - from the east via Gilston Road, or from the west via Advancetown Road.

The Dam Tasty Cafe will still be operating and is accessible via Gilston Road.



For more information and regular updates on Hinze Dam Stage 3 please visit our website at goldcoastcity.com.au/hinzedamstage3 or call 1300 366 692

Public Notice

Hinze Dam Road Closure

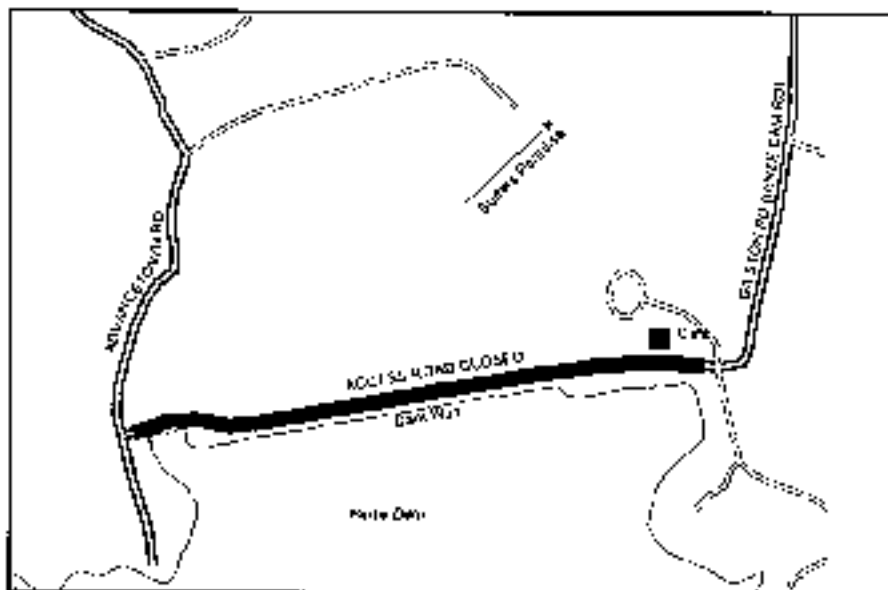
Access Road Across the Dam Closed

The access road across the dam wall is closed to all traffic from Saturday 20 January 2007 for approximately 3 weeks for Geotechnical Investigations (testing ground density and soil content).

The road will be re-opened for the Australia Day long weekend from Friday 25 January 2007 until Sunday 28 January 2007 only.

There are alternative routes to access Hinze Dam; from the east via Giston Road or from the west via Advance Down Road.

The Dam Jasty Cafe will still be operating and is accessible via Giston Road.



For more information and regular updates on Hinze Dam Stage 3 please refer to www.goldcoastcity.com.au/hinzedamstage3 or call 1 300 365 663.

Public Notice

Hinze Dam Crest Road Closure

Access Road Across the Dam Crest Closed

Residents and recreational users are advised that as part of the Hinze Dam Stage 3 Geotechnical studies the access road across the dam wall will continue to be closed to all traffic for approximately four weeks from Monday 19 February 2007.

There are two alternative routes to access Hinze Dam, from the east via Gilston Road or from the west via Advance/Dawn Road.

The Dam Testy Gate will still be operating and is accessible via Gilston Road.

For more information and regular updates on Hinze Dam Stage 3 please visit our website at goldcoastcity.com.au/hinzedamstage3 or call 1300 366 692

PUBLIC NOTICE

Road Closure

Access Road across the Hinze Dam

Residents and Recreational users are advised that as part of the Hinze Dam Stage 3 Geotechnical Studies the access road across the Dam wall will be limited to one lane access from Saturday 13 January 2007 until Saturday 20 January 2007. From Saturday 20 January 2007 this access road will then be closed to all traffic for approximately 3 weeks.

There are alternative routes to access Hinze Dam, from the east via Colston Road or from the west via Advanketown Road.

The Hinze Dam Stage 3 Upgrade is a key element of the Gold Coast Waterfuture Strategy and is vital for flood mitigation and the sustainable management of the Gold Coast's water supply ensuring the future needs of the region's growing population are met.

For more information and regular updates on Hinze Dam Stage 3 please refer to www.goldcoastcitycouncil.gov.au/hinzedamstage3



Gold Coast City Council

PUBLIC NOTICE

Notice of Geotechnical Drilling - Hinze Dam Stage 3 Upgrade

Residents and recreational users of the Hinze Dam area are advised that as part of the Hinze Dam Stage 3 Upgrade geotechnical drilling will be conducted during November and December 2006.

Geotechnical studies will provide the Hinze Dam Alliance (a consortium of companies appointed to deliver the project) with data that will be used to determine the composition of the local ground and subsurface conditions. This data is essential to the design, optimisation and construction of the dam upgrade.

The geotechnical work will span approximately 3 weeks. During this period the main barbecue area near the Dam Tasty Café and rowing facility will be closed. The barbecue areas beneath the dam wall (on Advancecove and Spillway Roads) will still be available for public use. The section of Spillway Road along the dam wall will be closed for one week. During this week access to the café and Rangers' office will be via Gilston - Hinze Dam Road. Specific closure dates will be posted on the Gold Coast City Council's website.

The Hinze Dam Stage 3 Upgrade is a key element of the Gold Coast Waterfuture Strategy that is a blueprint for the sustainable management of the Gold Coast's water supply to ensure that the future needs of the region's growing population are met. The dam upgrade will also reduce the risk of downstream flooding.

For more information contact:
Gold Coast Water, telephone: 1300 366 692
www.goldcoastcity.com.au/hinzedamstage3



Gold Coast City Council

Changed Traffic Conditions Hinze Dam

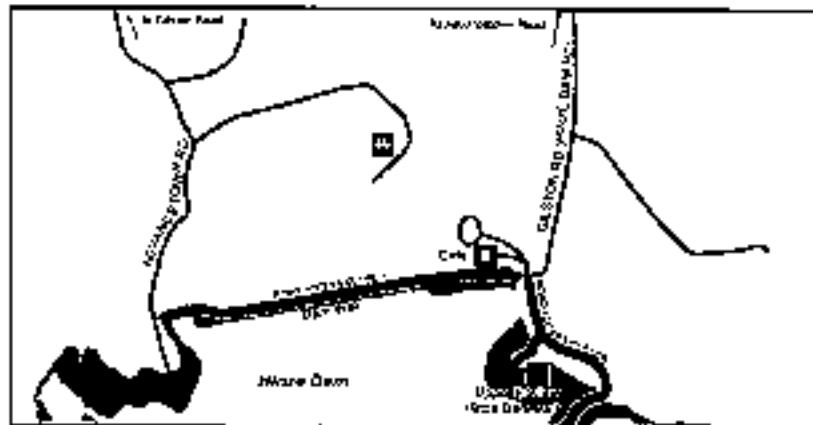
Hinze Dam Stage 3 geotechnical investigations continue to be conducted to gather information of the local ground and sub-surface conditions.

The access road across the dam will be closed from Monday 30 April 2007 for a period of six to eight weeks.

Alternative routes to Hinze Dam include via Gilston Road on the eastern side of the dam or Advancetown Road on the west.

Please note the Dam Tasty Café will remain open for business and is accessible via Gilston Road during this period.

Interruptions to local traffic may continue during project investigations. Please visit goldcoastcity.com/hinzedamstage3 for project updates or call 1300 366 692 for more information.



Do you live near the dam?

Want to find out about the Hinze Dam Stage 3?

Come along to a local community meeting to find out about

- The Hinze Dam Project
- Minimisation of construction impacts on local residents
- Local traffic and road access
- Environmental Update
- Recreational Issues

When: Thursday 26 April 2007 6:30pm - 9:30pm

Where: Advancetown Motel Motel
Verangy Murrumbidgee Road Advancetown

If you wish to attend please RSVP to Ms Zoe Ford on (07) 5581 7764 by
Monday 23 April 2007

The Hinze Dam Alliance is committed to engaging the community
and invites you to attend this informative meeting.



Public Notice

Hinze Dam Stage 3 Community Advisory Committee.

The Gold Coast Community are invited to attend the sixth Hinze Dam Stage 3 Community Advisory Committee meeting to be held Wednesday, 16 May 2007.

The Hinze Dam Stage 3 project is a key element of the Gold Coast Waterfuture Strategy that is a blueprint for the sustainable management of the Gold Coast's water supply. The dam upgrade will ensure that the future needs of the region's growing population are met and also reduce the risk of downstream flooding.

When: 5.30 pm to 8.00 pm

Where: Committee Meeting Room 06 at Council's Nerang Administration Centre, Nerang Southport Road

RSVP: Ph 5581 7754

For more information contact Gold Coast Water, telephone: 1300 366 692
goldcoastcity.com.au/hinzedamstage3



Attachment B Community Advisory Committee – Terms of Reference



TERMS OF REFERENCE FOR HINZE DAM STAGE 3 PROJECT COMMUNITY ADVISORY COMMITTEE

Committee Name:	Hinze Dam Stage 3 Project Community Advisory Committee
Mission:	
The purpose of this Committee is to facilitate effective and appropriate community and stakeholder input into the Hinze Dam Stage 3 Project, and to provide recommendations to Council on technical and policy issues related to the delivery of the project, where required.	
Objectives of the Committee:	
To provide:	
<ul style="list-style-type: none"> • A transparent, representative and accessible forum to address issues of community interest related to the Hinze Dam project • An avenue for the release of information to the public on the project, including through the nominated project spokesperson • To provide Council and the Alliance with interim recommendations and a final report on issues of community interest related to the Hinze Dam project • To acknowledge the views of the Community 	
Scope:	
<ul style="list-style-type: none"> • The scope of the committee terms of reference is restricted to the Hinze Dam stage 3 project works • The committee is to consider issues and provide recommendations to Council on impacts arising from the HD53 project related to: <ul style="list-style-type: none"> - Community amenity and recreational facilities - The natural environment - Social values and impacts - Cultural heritage • The Committee may examine items of a technical or policy nature where referred by Council • The committee may formulate recommendations for Council • Subject to the Council's Information Confidentiality Policy, the committee may request information from Council officers or the Alliance • Studies or other works or services (such as the Environmental Impact Statement) will be procured through the Alliance and provided to the Committee for consideration • The committee must have due regard to the timing and legal constraints of project approvals and delivery 	
Deliverables:	
<ul style="list-style-type: none"> • Public meetings • Recommendations provided to Council • Final report to Council and the Alliance to be considered as part of the Environmental Impact Assessment 	

Sunset/Review Period:	
•	The Committee will be operating on an ongoing basis over approximately 12 months through to commencement of construction works for the Hinze Dam Stage 3 Project
•	The Committee will be subject to review in June 2007

Board Structure and Membership	
Ex officio:	Mayor
Chair:	Independent chair to be appointed by Council
Project Spokesperson:	Spokesperson (and Deputy Chair) to be a Councillor nominated by Council
Members:	Members shall be representative of the following groups: <ul style="list-style-type: none"> • Environmental interest or catchment group 3 • Technical background (water) 1 • Ratepayers group or chamber of commerce 1 • Community stakeholder representative..... 2 • Councillor 2 • Other 1
Quorum:	By majority vote. In the event of a split decision, the Chair shall have the deciding vote
Secretariat:	Administrative services and report compilation to be provided by Council

Operational Guidelines	
•	The Chairperson, through the secretariat, is to ensure regular reporting to the Alliance, Council and relevant Council Advisory Committees on the HDS3 CAC proceedings and relevant matters considered.
•	All Committee meetings must have an agenda and recorded minutes. Minutes are for Committee reference purposes only and are not required to be provided to Council.
•	All meetings are to be open to the public, unless the chair determines that a closed session is required.
•	Members are required to declare any actual or perceived conflict of interest.

Governance:	
Convenor/Chair	<ul style="list-style-type: none"> • The Chair shall convene Committee meetings. • If the designated Chair is not available, then an Acting Chair will be nominated by the Committee and will be responsible for convening and conducting that meeting. The Acting Chair is responsible for informing the Chair as to the salient points/decisions raised or agreed to at that meeting.
Agenda Items:	<ul style="list-style-type: none"> • All Committee agenda items must be forwarded to the secretariat by COB 10 working days prior to the next scheduled meeting. • The Committee agenda, with attached meeting papers will be distributed at least 5 working days prior to the next scheduled meeting. • The Chair has the right to refuse to list an item on the formal agenda, but members may raise an item under "Other Business" if necessary and as time permits.
Minutes and Meeting Papers:	<ul style="list-style-type: none"> • The minutes of each Committee meeting will be prepared by the Secretariat. • Copies of the minutes (abbreviated minutes including items noted and resolved, and voting results), shall be provided to all Committee members no later than 10 working days following each meeting. • Minutes are to be endorsed by the Committee at the subsequent meeting • By agreement of the Committee, out-of-session decisions will be deemed acceptable. Where agreed, all out-of-session decisions shall be recorded in the minutes of the next scheduled Committee meeting. • Minutes are to be provided to the Alliance.
Proxies:	<ul style="list-style-type: none"> • Members of the Committee may nominate a proxy to attend a meeting if the member is unable to attend. • The Chair will be informed of the substitution at least 3 working days prior to the scheduled nominated meeting. • The nominated proxy shall not have voting rights at the attended meeting. The nominated proxy may provide relevant comments/feedback of the Committee member they are representing, to the attended meeting.
Quorum Requirements:	<ul style="list-style-type: none"> • A minimum of 7 Committee members is required for the meeting to be recognised as an authorised meeting for the recommendations or resolutions to be valid.
Dispute Resolution:	<ul style="list-style-type: none"> • If matters cannot be resolved, the matter may be referred to the Alliance for further advice or action.

Roles and Responsibilities:	
CAC Chair	<p>The Chairperson of the CAC will:</p> <ul style="list-style-type: none"> • Lead but not direct the Committee • Ensure there is fair discussion • Instigate debate amongst Committee members • Encourage all members of the CAC to present their views • Summarise discussions and points of view expressed
CAC Members	<p>CAC members are expected to:</p> <ul style="list-style-type: none"> • Be aware of the Terms of Reference and their individual roles and responsibilities • Allow all members to present their views • Respect other members opinions • Attend meetings and participate in discussions • Report their views and those of the wider community to the CAC • Ensure all media enquiries related to the CAC are directed to the Gold Coast City Council for comment.
EDMP / Alliance	<p>EDMP representatives and the Alliance agree to:</p> <ul style="list-style-type: none"> • Welcome suggestions and opinion from community and members of the CAC in relation to the HDS3 project • Support the smooth operation of the CAC by providing administrative support • Provide members with feedback on how their recommendations have been considered • Report on Alliance activities and project progress, and seek feedback from the CAC in a timely manner • Respond within agreed timeframes to requests for information • Help promote the CAC's existence, objectives and meeting outcomes to the community

Meeting Frequency
<ul style="list-style-type: none"> • The Committee is to convene every four (4) weeks from the time of the inaugural meeting, or otherwise as determined by the Committee quorum or requested by Council (or the Alliance) to accommodate project timelines.

Information Confidentiality
<ul style="list-style-type: none"> • In the course of its work, the board may be granted access to information that is not available to the public (e.g. before the information becomes public). It is also possible that some of the information made available to the Committee may, in accordance with Council's Information Confidentiality Policy, be classified confidential.

Attachment C Breakdown of Issues

Issue Raised	Total Raised	% of Total
Traffic	30	13%
Local Road and Bridge Upgrades	25	10%
Access	24	10%
Blasting	18	8%
Noise	16	7%
Construction	15	6%
Recreational Area	13	5%
Consultation	10	4%
Dust	10	4%
Property Impacts	9	4%
Environmental Management	7	3%
Governance/Project Justification	7	3%
Visual Appearance of Site	7	3%
Catchment Clearing	6	3%
Geotechnical	6	3%
Business Impacts	5	2%
Design	5	2%
Land Use Issues	5	2%
Caring for Local Wildlife	4	2%
Fauna	4	2%
Water Quality	3	1%
Amenity/Lifestyle	2	1%
Economic Impact	2	1%
Flora	2	1%
Parking	2	1%
Accessing Private Property	1	-
Economic Justification	1	-
Timing	1	-
TOTAL:	240	100%