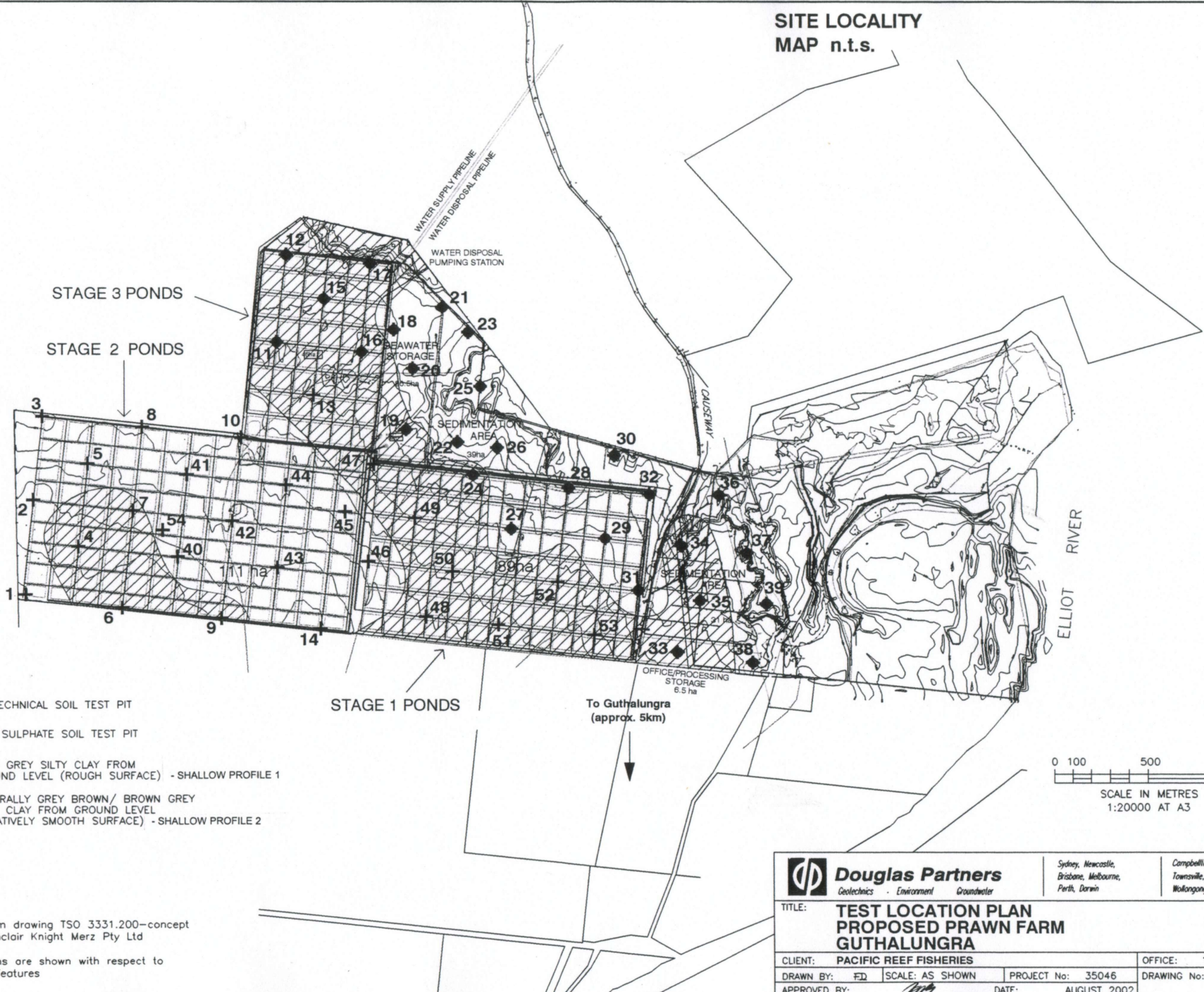

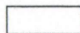


**SITE LOCALITY  
MAP n.t.s.**

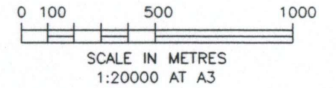



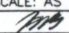
**LEGEND**

- +** GEOTECHNICAL SOIL TEST PIT
- ACID SULPHATE SOIL TEST PIT
-  DARK GREY SILTY CLAY FROM GROUND LEVEL (ROUGH SURFACE) - SHALLOW PROFILE 1
-  GENERALLY GREY BROWN/ BROWN GREY SILTY CLAY FROM GROUND LEVEL (RELATIVELY SMOOTH SURFACE) - SHALLOW PROFILE 2

**NOTE:**

1. Adapted from drawing TSO 3331.200—concept provided by Sinclair Knight Merz Pty Ltd
2. Test locations are shown with respect to proposed site features



 <b>Douglas Partners</b> Geotechnics · Environment · Groundwater		Sydney, Newcastle, Brisbane, Melbourne, Perth, Darwin	Campbelltown, Townsville, Cairns, Wollongong, Wyoong
<b>TITLE: TEST LOCATION PLAN PROPOSED PRAWN FARM GUTHALUNGRA</b>			
<b>CLIENT: PACIFIC REEF FISHERIES</b>		<b>OFFICE: TOWNSVILLE</b>	
<b>DRAWN BY: FD</b>	<b>SCALE: AS SHOWN</b>	<b>PROJECT No: 35046</b>	<b>DRAWING No:</b>
<b>APPROVED BY:</b> 	<b>DATE:</b>	<b>AUGUST 2002</b>	

c:\townsville02\35046\35046-1.dwg