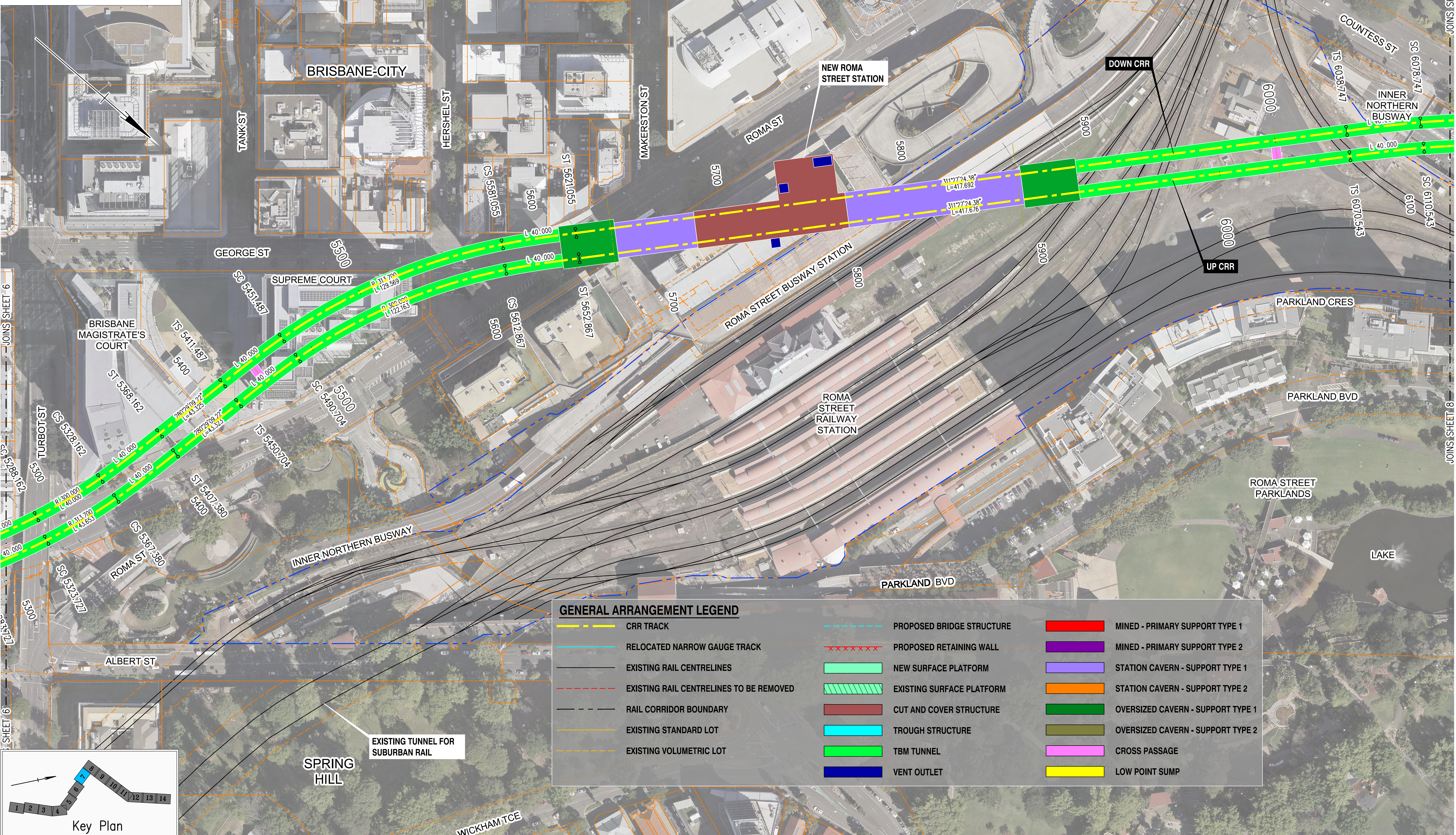


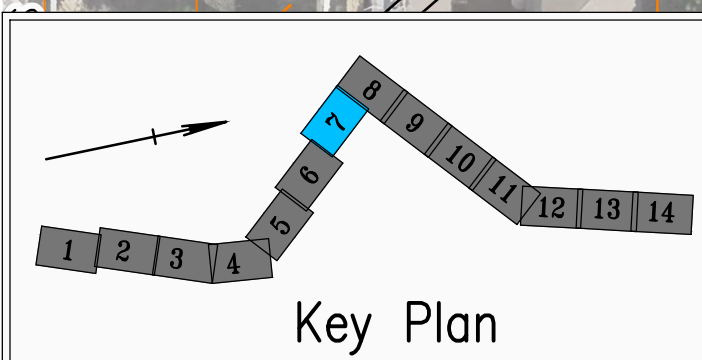
Feb 08, 2017 - 2:16pm
Last Modified - 17-
C:\Projectwise\bnr_projects\luke.cruickshank\dms97294\CRR-0002-AL-GA-107.dwg
C:\Projectwise\bnr_projects\luke.cruickshank\dms97294\CRR-0002-AL-GA-107.dwg
MRR_DETAIL_A1_Refer.dwg : X-CRR-MGECW-0001-10cm.dwg : X-CRR-DSHT-0001-GA-VPORT.dwg : X-CRR-DSHT-0001-GA-ANNO.dwg : X-CRR-SDCD-0001-PL.dwg : X-CRR-DSTN-0001-STN_SUPER.dwg : X-CRR-DRAI-0001-HATCH-GA.dwg : X-CRR-DSHT-0001-GA-TEXT.dwg


NOT FOR
CONSTRUCTION
8 February 2017



GENERAL ARRANGEMENT LEGEND

| | | | | | |
|--|---|--|---------------------------|--|-----------------------------------|
| | CRR TRACK | | PROPOSED BRIDGE STRUCTURE | | MINED - PRIMARY SUPPORT TYPE 1 |
| | RELOCATED NARROW GAUGE TRACK | | PROPOSED RETAINING WALL | | MINED - PRIMARY SUPPORT TYPE 2 |
| | EXISTING RAIL CENTRELINES | | NEW SURFACE PLATFORM | | STATION CAVERN - SUPPORT TYPE 1 |
| | EXISTING RAIL CENTRELINES TO BE REMOVED | | EXISTING SURFACE PLATFORM | | STATION CAVERN - SUPPORT TYPE 2 |
| | RAIL CORRIDOR BOUNDARY | | CUT AND COVER STRUCTURE | | OVERSIZED CAVERN - SUPPORT TYPE 1 |
| | EXISTING STANDARD LOT | | TROUGH STRUCTURE | | OVERSIZED CAVERN - SUPPORT TYPE 2 |
| | EXISTING VOLUMETRIC LOT | | TBM TUNNEL | | CROSS PASSAGE |
| | | | VENT OUTLET | | LOW POINT SUMP |



| | | | | | | | | | | | | | | | | | | | | | | | | |
|------------------------|--|--|--|--|--------------|------------------------------------|--|-----------------------|--|--|--|--------------------|--------------------------------|----------------------------------|--|-------------|------------------|---|---------|--|--|--|--------------------|----|
| | | | | Associated Job Nos | Survey Data | | <div><div>A1 / A3</div><div>01000 / 1:2000</div><div>010203040m</div></div> | BRISBANE CITY | | | | | GENERAL ARRANGEMENT SHEET 7 | | | | | <div>Queensland Government</div> | | | | | | |
| | | | | | Datum | GDA94 | | CROSS RIVER RAIL | | | | | | | | | | | | | | | | |
| | | | | Auxiliary Drg Nos | Horiz. Grid | REFERENCE DESIGN (CHANGED PROJECT) | | | | | | | | | | | | | | | | | | |
| C MINOR REVISION | | | | | 08/02/17 | Height Origin | | Reference Points | | | | | Drawn SG | ENGINEERING CERTIFICATION (RPEQ) | | | | | Job No. | | | | | |
| B MINOR REVISION | | | | | 02/11/16 | | Preceding RP Dist. to start of job (km) From start to end of job From end to Following RP Following RP | | | | | ENG. AREA CIVIL | | J. DONOHUE | | NO. 7835 | DATE 14/10/16 | Contract No. | | | | | | |
| A ISSUE FOR RFPC | | | | 14/10/16 | Survey Books | | Dimensions shown in except where shown otherwise | | | | | | | | | | | Designed JD | | | | | Drawing No. | IC |
| Revisions/Descriptions | | | | Certification | | Date | Microfiled | Through Chainage from | | | | | | | | | | | | | | | Series Number | of |
| | | | | | | | | | | | | | | | | | | | | | | | MRR Detail (06/13) | |
| CAD FILES | | | | C:\Projectwise\bne_projects\luke.cruickshank\dms97294\CRR-0002-AL-GA-107.dwg | | | | | | | | | | | | | | | | | | | | |