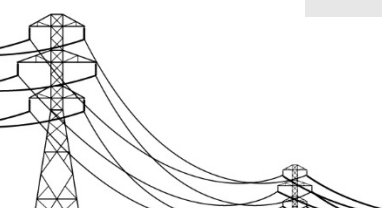
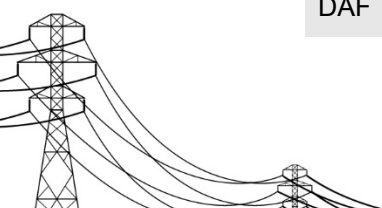


Abbreviations and acronyms

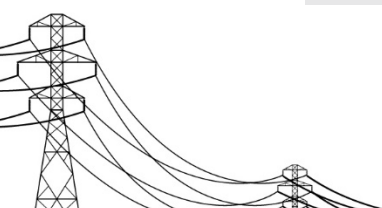
Abbreviation/acronym	Description
µg/m ³	Micrograms per cubic metre
4WD	Four-wheel drive
2010 EIS	Copperstring Environmental Impact Statement
2011 SEIS	Copperstring Supplementary Environmental Impact Statement
AADT	Average Annual Daily Traffic
AAQMS	Ambient air quality monitoring station
ABS	Australian Bureau of Statistics Census 2016
AC	Alternating current
ACA	Aquatic Conservation Assessment
ACHA	Queensland <i>Aboriginal Cultural Heritage Act 2003</i>
AGL	Above ground level
AHC Act	Commonwealth <i>Australian Heritage Council Act 2003</i>
AHD	Australian Height Datum
AIP	Aeronautical information package
ALA	Atlas of Living Australia
AMP	Archaeological Management Plan
AMSL	Above mean sea level
APAS	Australian Pest Animals Strategy 2017- 2027
ARP	Aerodrome reference point
ASS	Acid sulfate soils
ATSIHP Act	Commonwealth <i>Aboriginal and Torres Strait Islander Heritage Protection Act 1984</i>
AWS	Australian Weeds Strategy 2017- 2027
BAAM	Biodiversity Assessment and Management Pty Ltd
BIBO	Bus-in bus-out
Biosecurity Act	Queensland <i>Biosecurity Act 2014</i>
BoM	Bureau of Meteorology



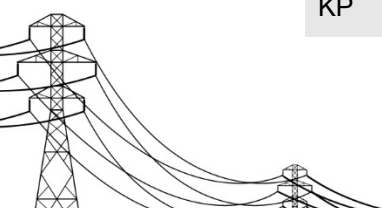
Abbreviation/acronym	Description
BPA	Biodiversity Planning Assessment
BRB	Brigalow Belt bioregion
BS Act	Queensland <i>Biosecurity Act 2014</i>
BS Regulation	Queensland <i>Biosecurity Regulation 2016</i>
BTF	Black-throated finch
BVG	Broad Vegetation Group
CAAP	Civil Aviation Advisory Publication
CAR	Commonwealth <i>Civil Aviation Regulations 1988</i>
CASA	Civil Aviation Safety Authority
CBP	Concept Biosecurity Plan
CE	Critically Endangered
CEMP	Construction Environmental Management Plan
CESCP	Concept Erosion and Sediment Control Plan
CEV	Controlled Environment Vault
CEMP	Construction Environmental Management Plan
CG	Coordinator-General
CHMP	Cultural Heritage Management Plan
CLR	Contaminated Land Register
CNS	Communications, Navigation and Surveillance
CopperString 1.0 EIS	CopperString 1.0 Environmental Impact Statement
CopperString 1.0 SEIS	CopperString 1.0 Supplementary Environmental Impact Statement
CopperString 2.0	CopperString 2.0 Project
CopperString 2.0 EIS	CopperString 2.0 Environmental Impact Statement
CP	Conservation Plan
CRP	Concept Rehabilitation Plan
CSIRO	Commonwealth Scientific and Industrial Research Organisation
CSP	Common South Point
CuString	CopperString Pty Ltd
DAF	Queensland Department of Agriculture and Fisheries



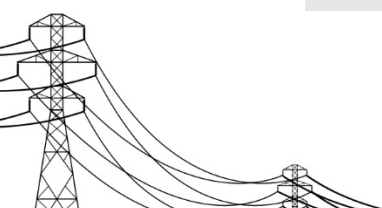
Abbreviation/acronym	Description
DAH	Designated Airspace Handbook
DATSIP	Queensland Department of Aboriginal and Torres Strait Islander Partnerships
DAWE	Commonwealth Department of Agriculture, Water and the Environment
DEE	Commonwealth Department of Environment and Energy
DERM	Queensland Department of Environment and Resource Management
DES	Queensland Department of Environment and Science
DEU	Desert Uplands bioregion
DNRME	Queensland Department of Natural Resources, Mines and Energy
Draft ToR	Draft Terms of Reference
DSDMIP	Queensland Department of State Development, Manufacturing, Infrastructure and Planning
DTMR	Queensland Department of Transport and Main Roads
E	Endangered
EAR	Environmental Assessment Report
EIS	Environmental Impact Statement
EIU	Einasleigh Uplands bioregion
EMP	Environmental Management Plan
EMR	Environmental Management Register
ENA	Electricity Networks Association
EO Act	Queensland <i>Environmental Offsets Act 2014</i>
EP Act	Queensland <i>Environmental Protection Act 1994</i>
EP Reg	Queensland <i>Environmental Protection Regulation 2019</i>
EPBC Act	Commonwealth <i>Environment Protection and Biodiversity Conservation Act 1999</i>
EPP (Air)	Queensland <i>Environmental Protection (Air) Policy 2019</i>
EPP (Noise)	Queensland <i>Environmental Protection (Noise) Policy 2019</i>
EPP (Water and Wetland Biodiversity)	Queensland <i>Environmental Protection (Water and Wetland Biodiversity) Policy 2019</i>



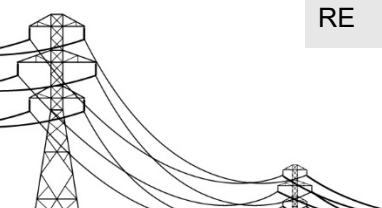
Abbreviation/acronym	Description
ERA	Environmentally Relevant Activities
ERP	Emergency Response Plan
ERSA	En Route Supplement Australia
ESCP	Erosion and Sediment Control Plan
ESWMS	Environmental and Safe Work Method Statement
FDP	Field Development Plan
FEMP	Framework Environmental Management Plan
FIC	Facilities Information Chart
FIFO	Fly-in fly-out
GAB	Great Artesian Basin
GBO	General Biosecurity Obligation
GBR	Great Barrier Reef
GBRMP	Great Barrier Reef Marine Park
GDE	Groundwater Dependent Ecosystems
GIS	Geographic Information Systems
GNLVA	Guidance Note for Landscape and Visual Assessment
GNLVIA	Guidance Note for Landscape and Visual Impact Assessment
GP	Gulf Plains bioregion
GTIA	Guide to Traffic Impact Assessment
HSE	Health, Safety and Environment
HVR	High Value Regrowth
IAS	Initial Advice Statement
ICAO	International Civil Aviation Organisation
IECA	International Erosion Control Association
IFS	Infrastructure facility of significance
ILUA	Indigenous Land Use Agreement
IPAC	Invasive Plants and Animals Committee
IPAS	Queensland Invasive Plants and Animals Strategy 2019-2024
KP	Kilometre post



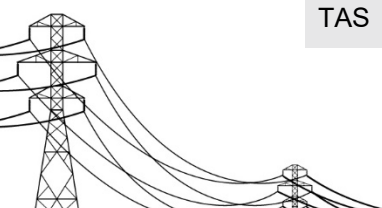
Abbreviation/acronym	Description
LC	Least concern
LSALT	Lowest Safe Altitude
LG	Local Government
LGA	Local Government Area
mg/m ² /day	Milligrams/square metre/day
MGD	Mitchell Grass Downs bioregion
MID	Ministerial Infrastructure Designation
Mig	Migratory
MITEZ	Mount Isa to Townsville Economic Development Zone
MNES	Matter of National Environmental Significance
MOC	Minimum Obstacle Clearance
MOS	Manual of Standards Part 139- Aerodromes
MSA	Minimum Safe Altitude
MS Word	Microsoft Word™
MSES	Matter of State Environmental Significance
MTPA	Million tonnes per annum
MTQ	Museum of Tropical Queensland
MW	Mega-watts
NAIF	Northern Australia Infrastructure Facility
NC Act	Queensland <i>Nature Conservation Act 1992</i>
NEM	National Energy Market
NEMDE	National Electricity Market Dispatch Engine
NER	National Electricity Rules
NET Infrastructure Plan	Northern Economic Triangle Infrastructure Plan 2007 – 2012
NHMRC	National Health and Medical Research Council
NNTT	National Native Title Tribunal
NO ₂	Nitrogen dioxide
NL	Not listed



Abbreviation/acronym	Description
NRM	Natural Resource Management
NT	Near Threatened
NT Act	Commonwealth <i>Native Title Act 1993</i>
NQ	North Queensland
NQRP	North Queensland Regional Plan March 2020
NWH	Northwest Highlands bioregion
NWMP	North West Minerals Province
NWPS	North West Power System
NWQ	North-west Queensland
NWRP	North West Regional Plan 2010-2013
OEMP	Operations Environmental Management Plan
OLS	Obstacle Limitation Surface(s)
OPGW	Optical ground wire
PA 2016	Queensland <i>Planning Act 2016</i>
PM ₁₀	Particulate matter with an aerodynamic diameter of 10 microns or less
PM _{2.5}	Particulate matter with an aerodynamic diameter of 2.5 microns or less
PMST	Protected Matters Search Tool
POTL	Port of Townsville Limited
PR 2017	Queensland <i>Planning Regulations 2017</i>
QHA	<i>Queensland Heritage Act 1992</i>
QHR	Queensland Heritage Register
QLD	Queensland
QLD IPAS	Queensland Invasive Plants and Animals Strategy 2019-2024
QPS	Queensland Police Service
QPWS	Queensland Parks and Wildlife Service
RAAF	Royal Australian Air Force
RCR	Revised corridor route
RE	Regional Ecosystem



Abbreviation/acronym	Description
RPEQ	Registered Professional Engineer of Queensland
RPT	Regular public transport
RSP	Route selection process
RUMP	Road Use Management Plan
SA	South Australia
SAT	Spot Assessment Technique
SARA	State Assessment and Referral Agency
SCADA	Supervisory control and data acquisition
SCL Act	Queensland <i>Strategic Cropping Land Act 2011</i>
SCR	State-controlled road
SDAP	State Development Assessment Provisions
SDPWO Act	Queensland <i>State Development and Public Works Organisation Act 1971</i>
SEA	Strategic Environmental Area
SEIS	Supplementary Environmental Impact Assessment
SEVT	Semi-evergreen vine thicket
SIA	Social Impact Assessment
SIDRA	Software package used for the design and evaluation of individual intersections and networks
SISD	Safe Intersection Sight Distance
SLC	Special Least Concern
SMP	Species Management Program
SO ₂	Sulphur dioxide
SPRAT	Species Profile and Threats Database
SSD	Stopping Sight Distance
SSR	Secondary Surveillance Radar
STPs	Sewage treatment plants
SVCs	Static VAR compensators
SWMS	Safe Work Method Statements
TAS	Tasmania



Abbreviation/acronym	Description
TEC	Threatened Ecological Community
The Sims Review	Review of North West Queensland Energy Delivery – 2009
TIA	Transport and/or Traffic Impact Assessment
TI Act	Queensland <i>Transport Infrastructure Act 1994</i>
ToR	Terms of Reference
TSP	Total suspended particles
Type 2 Road Train	Triple road train
UXO	Unexploded ordnance
V	Vulnerable
VIC	Victoria
VM Act	Queensland <i>Vegetation Management Act 1999</i>
WA	Western Australia
Water Act	Queensland <i>Water Act 2000</i>
WHA	World Heritage Area
WO	Wildlife Online
WoNS	Weeds of National Significance
WWBW	Waterway Barrier Works

